

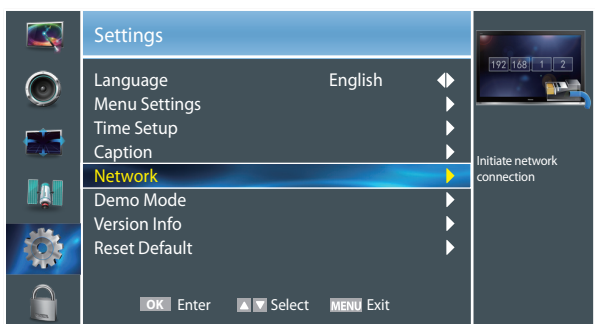
Advanced Features

Network Setup (Auto)

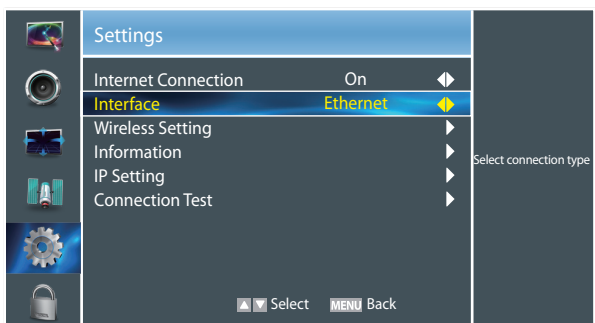
Use the Automatic Network Setup while your connecting the TV to a network that supports DHCP. To set up your TV's cable network connection automatically, follow these steps:

How to set up automatically

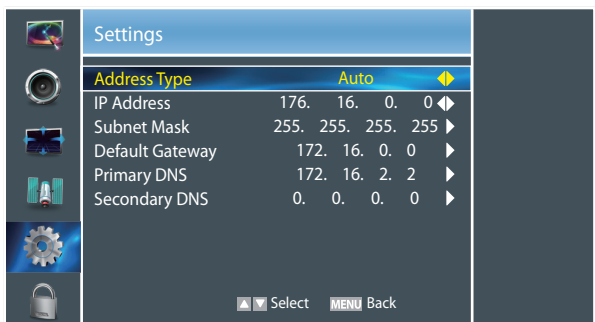
1. Connect your TV to your LAN as described in the previous section.
2. Turn on your TV, operate according to the description in the Settings menu until the Network screen appears.



3. On the Network screen, select Configuration and press [ENTER] button to enter the submenu.



4. Set Internet Connection to On and Interface to Ethernet.
5. Select IP Setting and press [ENTER] button to enter it.



6. Set Address Type to Auto.
7. Auto acquires and enters the necessary connection values automatically.
8. If the connection values are not automatically entered, please check your modem and router manuals for

directions to enable automatic IP addressing by DHCP. Or, follow the steps listed to the follow to manually configure the network connection.

Network Setup (Manual)

Use the Automatic Network Setup when connecting your TV to a network that requires a Static IP address.

Getting the Network Connection Values

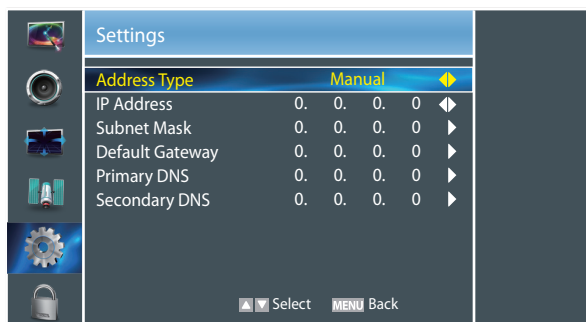
To get the network connection values on most windows computers, follow these steps:

1. Right click the Network icon on the bottom right of the screen.
2. In the pop-up menu that appears, click Status.
3. On the dialog that appears, click the Support tab.
4. On the Support tab, click the Details button. The network connection values are displayed.

How to set up manually

To set up your TV's network connection manually, follow these steps:

1. Follow Steps 1 through 5 in the "How to set up automatically" procedure.
2. Set Address Type to Manual.

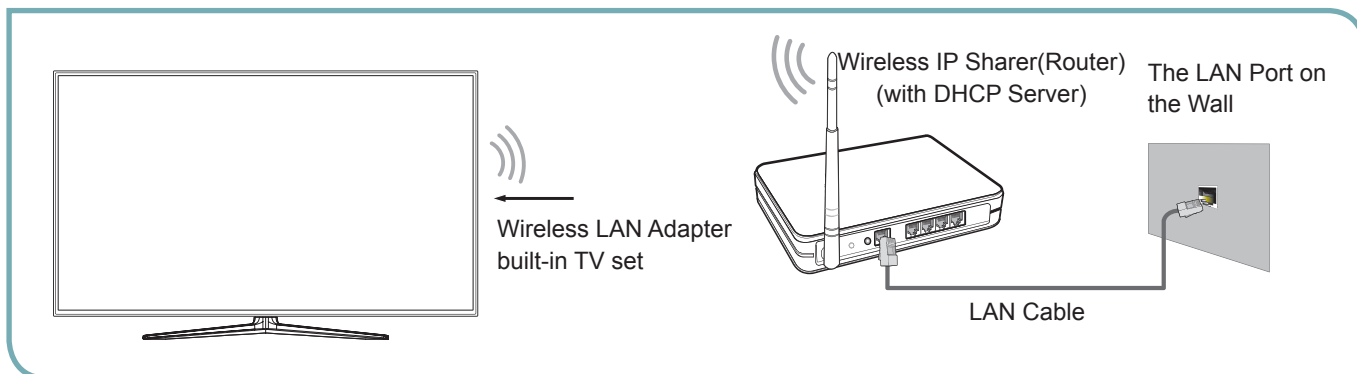


3. Press [▲/▼] button to select IP Address and press [◀/▶] button to move the cursor to the entry field. Then press 0~9 buttons to enter the numbers.
4. Press [MENU] button to exit IP Address and press [▲/▼] button to select the next options to enter the numbers.
5. When done, press [MENU] button to return to the previous menu.
6. Select IP Connection Test to check the internet connectivity.

Advanced Features

❏ Connecting to a Wireless Network

To connect your TV to your network wirelessly, you need a wireless router or modem. See the illustration below.



Hisense's built-in Wireless LAN Adapter supports the IEEE 802.11 b/g/n communication protocols. Hisense recommends using IEEE 802.11n router. When you play the video over a IEEE 802.11b/g connection, the video may not play smoothly.

✓ NOTES

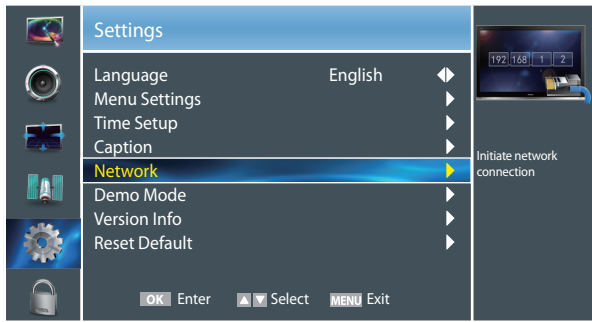
- You must use the Hisense's built-in Wireless LAN Adapter to use a wireless network, the set doesn't support external USB network adapter.
- To use a wireless network, your TV must be connected to a wireless IP sharer. If the wireless IP sharer supports DHCP, your TV can use a DHCP or static IP address to connect to the wireless network.
- Select a channel for the wireless IP sharer that is not currently being used. If the channel set for the wireless IP sharer is currently being used by another device nearby, this will result in interference and communication failure.
- If you apply a security system other than the systems listed below, it will not work with the TV.
- If Pure High-throughput (Greenfield) 802.11N mode is selected and the Encryption type is set to WEP, TKIP or TKIP-AES (WPS2 Mixed) for your Access Point (AP), Hisense TVs will not support a connection in compliance with new Wi-Fi certification specifications.
- If your AP supports WPS (Wi-Fi Protected Setup), you can connect to the network via PBC (Push Button Configuration) or PIN (Personal Identification Number). WPS will automatically configure the SSID and WPA key in either mode.
- Connection Methods: You can setup the wireless network connection three ways.
 - Scan
 - Manual
 - Auto

Advanced Features

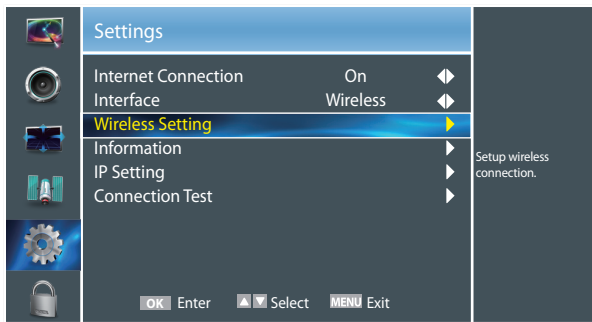
Wireless Setting

How to set up

1. Turn on your TV, operate according to the description in the Settings menu until the Network screen appears.



2. On the Network screen, select Configuration and press [ENTER] button to enter the submenu.



3. Set Internet Connection to On and Interface to Wireless.
4. Select Wireless Setting and press [ENTER] button to enter it.
You can select: Scan\Manual\Auto.
5. If you select Scan, a screen will appear listing all of the wireless networks within range of the TV. Use the [▲/▼] keys to select the wireless network with your router SSID and press [ENTER] to confirm. Proceed to Step 7.
6. If you select Manual, a screen will appear prompting you to enter the SSID of your wireless network. Press [ENTER] and an on-screen keyboard will pop up. Enter the SSID and select OK. Press [ENTER] to confirm and a screen will appear prompting you select the security mode for your wireless network. Use the [▲/▼] keys to select the proper security mode and press [ENTER] to confirm. If you selected None for the security mode, proceed to step 9.
7. A screen will appear prompting you to enter the password for the selected security mode. Press [ENTER] and an on-screen keyboard will pop up. Enter the password and select OK. Press [ENTER] to confirm. Proceed to Step 9.
8. If you select Auto, a screen will appear prompting you to select PIN (personal identification number) or PBC

(push button configuration) setup. Choose the method supported by your wireless access point.

- 8a. If you choose PIN, an identification number will appear on the screen for you to enter into the access point. After entering the PIN, press the [▶] key. If the PIN is in use by another device, select [REFRESH] to obtain a new PIN and enter it into the access point. After entering the PIN, press the [▶] key.
- 8b. If you choose PBC, a screen will appear prompting to press [▶] key. After pressing the [▶] key you have two minutes to locate and press the Push Button on your access point to connect to the TV.
9. Press the [MENU] key to return to the previous menu.
10. Select Connection Test to check the Internet connectivity.

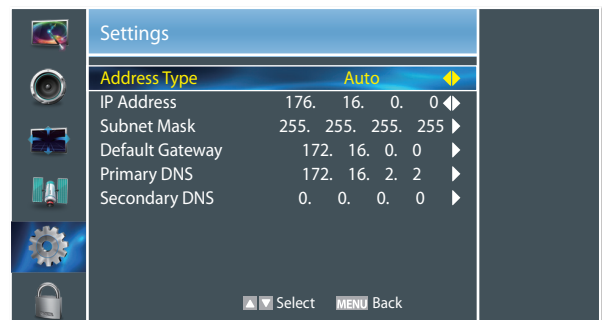
DLNA Settings

Computer, TV and other digital devices can be connected via DLNA and they can share files with each other. You can use the TV set as a DLNA DMP (Digital Media Player) device to enjoy movies, pictures, music and other multimedia materials in your computer through DLNA connection.

DLNA Setting needs to be set on TV and computer respectively.

Network Setup:

1. Turn on your TV, operate according to the description in the Settings menu until the Network screen appears.
2. On the Network screen, select Configuration and press [ENTER] button to enter the submenu.
3. Set Internet Connection to On and Interface to Ethernet.
4. Select IP Setting and press [ENTER] button to enter it.
5. Set Address Type to Auto.

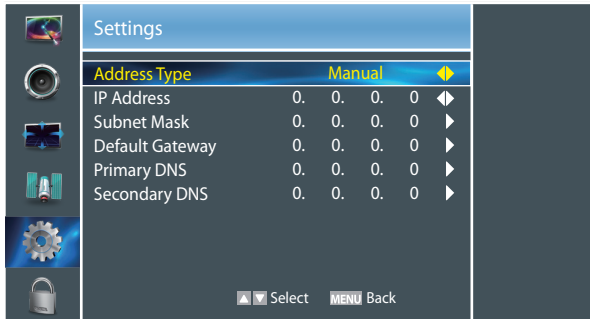


6. Auto acquires and enters the necessary connection values automatically.
7. If the connection values are not automatically entered, please check your modem and router manuals for directions to enable automatic IP addressing by DHCP. Or, follow the steps below to manually configure the network connection.

Advanced Features

To set up your TV's network connection manually, follow these steps:

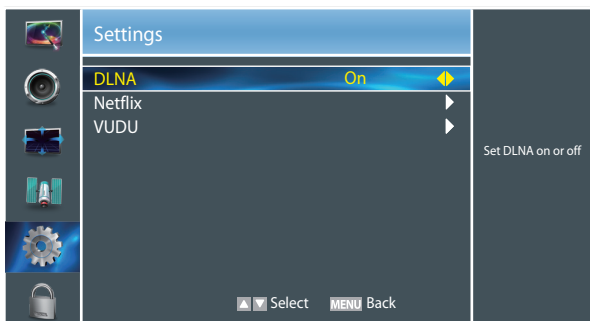
- 1). Follow Steps 1 through 5 in the "How to set up automatically" procedure.
- 2). Set Address Type to Manual.



8. Set Address Type to Manual, enter IP Setting. Then press [▲/▼] button to select IP Address and press [◀/▶] button to move the cursor to the entry field. Then press 0~9 buttons to enter the numbers.
9. Press [MENU] button to exit IP Address and press [▲/▼] button to select the next options to enter the numbers.
10. When done, press [MENU] to return to the previous menu.
11. Select Connection Test to check the Internet connectivity.

Set DLNA to On:

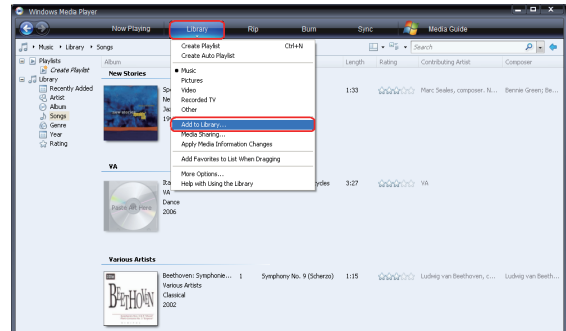
1. On the Network screen, select Applications and press [ENTER] button to enter the submenu.
2. Press [◀/▶] button to set DLNA to On.



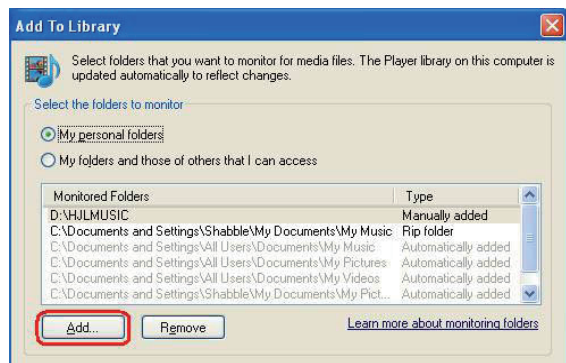
Media Share Settings in Computer

If your computer does not support DLNA, you may install software that supports DLNA such as TVerseity or Windows Media Player. We recommend Windows Media Player as the installation and setup is easier.

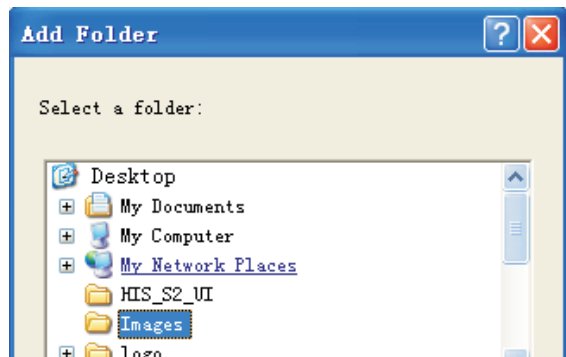
1. Start the Windows Media Player(V11 or higher).
2. Click "Library" and then "Add to Library...".



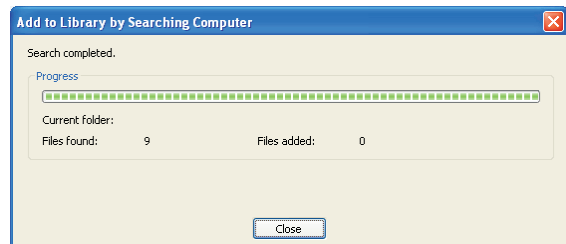
3. The "Add To Library" will pop up on the screen. Click "Add".



4. Select a folder and click OK button.



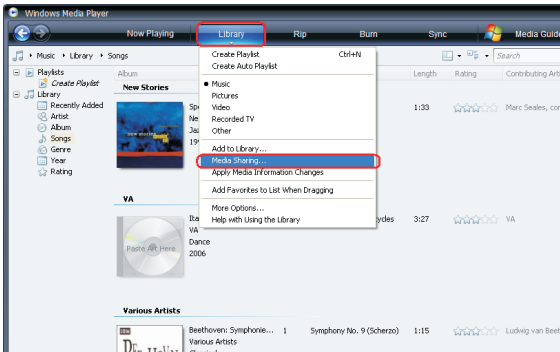
5. Click "Close" to close the dialog.



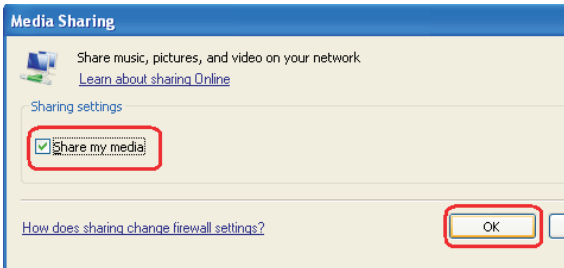
Settings to Share Files

1. Click "Library" and move the cursor to select "Media Sharing...".

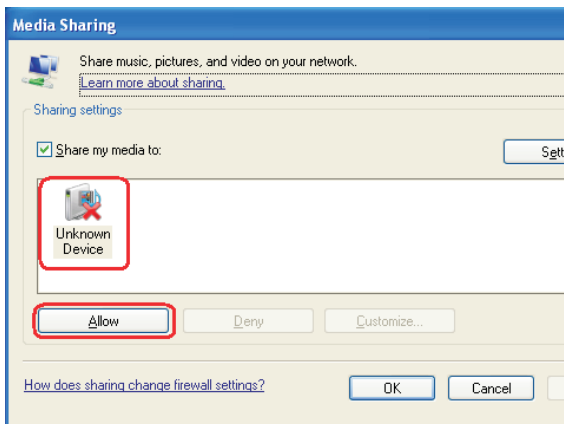
Advanced Features



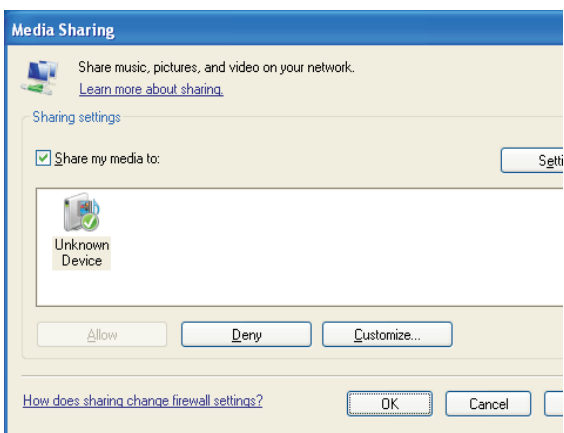
2. Click the box to select “Share my media” and click [OK].



3. An equipment icon will appear on the white area if the DLNA Settings has been correctly set. Select the appropriate icon and then click “Allow”.



4. The TV now has access to the shared files on the computer.



Network Function

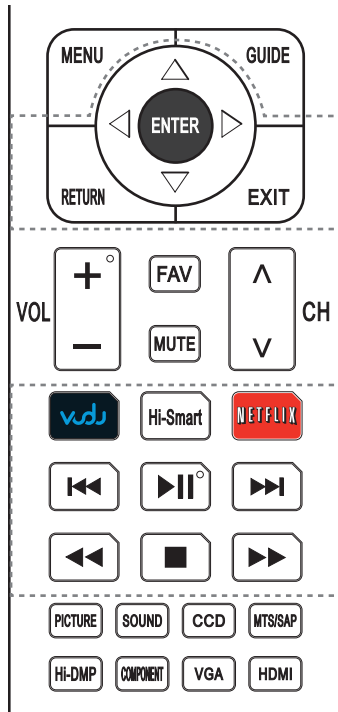
NOTICE FOR USE

If you use VUDU services, see the following note before using it.

1. Use of Internet services requires a working broadband Internet connection (1 to 2 Mbps for SD video, 2.25 to 4.5 Mbps for HD video and 4.5 to 9 Mbps for HDX video).
2. VUDU and other Internet-based services are not provided by Hisense, may change or be discontinued at any time and may be subject to restrictions imposed by your Internet service provider. The quality, functionality, or availability of such services may be affected by the capacity of your Internet connection. Use of VUDU video-on-demand and other Internet services may require the creation of a separate account through a computer with internet access.
3. Certain VUDU services may not be available for this TV model.
4. VUDU video-on-demand and other Internet services may require payment of one-time and/or recurring charges.
5. You are solely responsible for any charges incurred as a result of using Internet-based content, including, without limitation, communications charges for the provision of Internet or network services and any charges incurred for third-party Internet content services, such as video on demand or subscription services. All third-party services are provided in accordance with whatever terms and conditions are established between such third-party providers and you.
6. HISENSE MAKES NO REPRESENTATIONS OR WARRANTIES ABOUT THE CONTENT, AVAILABILITY OR FUNCTIONALITY OF THE VUDU SERVICE OR OTHER INTERNET DELIVERED THIRD-PARTY SERVICES AND DOES NOT WARRANT THAT ANY OF THEM WILL BE UNINTERRUPTED, ERROR FREE OR SATISFACTORY. ANY IMPLIED WARRANTY, INCLUDING BUT NOT LIMITED TO ANY IMPLIED WARRANTY OF MERCHANTABILITY OR FITNESS FOR A PARTICULAR PURPOSE OF ANY THIRD PARTY CONTENT OR SERVICE, IS EXPRESSLY EXCLUDED AND DISCLAIMED. UNDER NO CIRCUMSTANCES WILL HISENSE BE LIABLE IN CONTRACT, TORT OR UNDER ANY OTHER THEORY FOR ANY DAMAGES ARISING OUT OF OR IN CONNECTION WITH YOUR USE OF ANY CONTENT OR SERVICE PROVIDED BY ANY THIRD PARTY, EVEN IF ADVISED OF THE POSSIBILITY OF SUCH DAMAGES.

Advanced Features

Operational buttons



Buttons	Description
	Press to launch Vudu Movies App directly.
	Opens the Hi-Smart Hub with links to various Internet Services.
	Press to launch Netflix App directly.
	Selects the on-screen menu items.
ENTER	Confirms selections.
EXIT	Closes the menu.
RETURN	Returns to the previous menu.
	Stops playback and displays the movie title screen.
	Pauses playback. Press the button to return to playback.
	Displays the TrickPlay screen and fast forwards playback.
	Displays the TrickPlay screen and fast reverses playback.
	Plays the next video.
	Plays the previous video.

Enter the Network Applications

1. Press the [Hi-Smart] button to display network main menu.



2. Press [] button to select the interface you want to view and press [ENTER] to enter the following description.

No	Interface description
1	The current signal
2	The Hisense advertisement
3	Hisense market
4	Network options
5	Source options

Advanced Features

VUDU HD Movies

❏ Brief introduction

VUDU is an on-demand service that offers high-definition movies on Web.

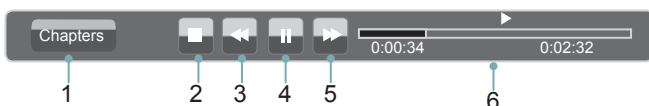
For enjoying more movies, please register and log in to your account.

❏ Operation instructions

You can access the VUDU HD Movies by the following method:

1. Press the [Hi-Smart] button to display network main menu.
2. Press [▲/▼/◀/▶] button to select the VUDU HD Movies icon and press [ENTER] to enter it (Refer to “Enter the network application”), or press [VUDU] button to enter directly.
3. Select the Sign Up Now icon on the VUDU HD Movies interface, and press [ENTER] to enter.
4. Enter your email address to start your VUDU experience. (Refer to “How to Input the Email Address”)
5. Press [▲/▼/◀/▶] button to move the cursor to select service items in the VUDU HD Movies home page, and press [ENTER] button to confirm.
6. In the process of watching a movie, press [ENTER] button to display/exit the tool bar, press [◀/▶] button to select the function icon, and press [ENTER] button to confirm.
7. Press [RETURN] button to return the upper menu, or press [EXIT] button to close the menu.

● Tool Bar



1. Press [ENTER] button to enter and press [◀/▶] button to select the chapter.
2. Stop playback.
3. Fast backward. Press [ENTER] button to select the backward speed. You can press [◀◀] button to achieve the function.
4. Play/Pause. You can press [▶||] button to play/pause directly when there is no control bar on the screen.
5. Fast forward. Press [ENTER] button to select the forward speed. You can press [▶▶] button to achieve the function.
6. Progress bar. The progress bar when playing.

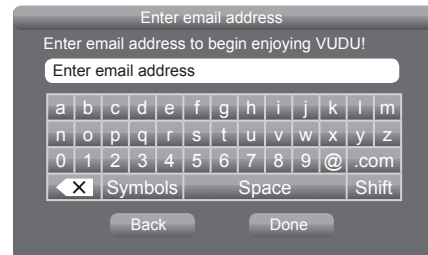
❏ How to Input the Email Address

1. Press [▲/▼/◀/▶] button to move the cursor to the address bar and press [ENTER] button to confirm.

2. Press [ENTER] button to display the keyboard.

There are some shortcuts on the bottom of the keyboard so that you can input part of the address often used directly.

Other keys are used as the keyboard of your computer.



3. Press [▲/▼/◀/▶] button to move the cursor to the characters you want to select and then press [ENTER] button to confirm.

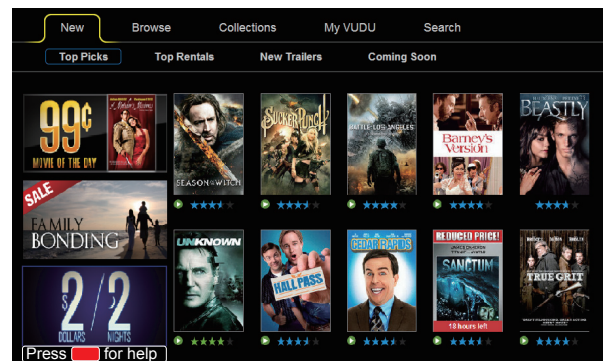
If you want to delete one character, move the cursor to Back key [X] and press [ENTER] button to confirm.

4. Move the cursor to Done key and press [ENTER] button to confirm if you have completed the address input. Then the new address will appear on the address bar.

☑ NOTE

TV screen may be difference with picture.

❏ VUDU HD Movies home page



Title	Function
New	The latest movies
Top Picks	Mostly picked up movies
Top Rentals	Mostly rented movies
New Trailers	Latest trailers
Coming Soon	The movies can be picked soon
Browse	Browse all the movies in VUDU
Collections	Browse the classified movies
My VUDU	The movies user bought or rented
Search	Search movies in VUDU

Advanced Features

VUDU HD Movies subpage



Title	Function
Rent/Own	To rent or buy current movie
Watch Trailer	To watch trailer of the current movie
2 Minute Preview	To preview current movie for 2 minutes
Add to Wishlist	Add current movie to your wishlist
Rate/share	To rate current movie or share it to your friends in Facebook or Twitter
Overview	The overview of current movie
Cast&Crew	The cast and crew of current movies and find their related movies
Reviews	The reviews of current movie
Similar	The similar types of movies
More Info	The detail information of current movie

VUDU Apps

Brief introduction

The applications platform for connected TVs.

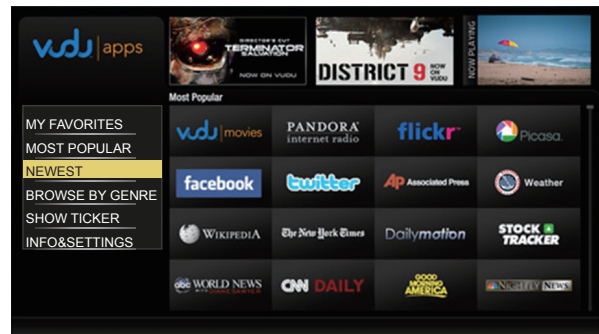
- VUDU Apps provides customers with access to a wide range of Internet services and applications including streaming video, music on demand, photo browsing, social networking and more.
- VUDU Apps supports the development of responsive apps designed specifically for use on home HD televisions.
- VUDU Apps uses a unique, cloud-based architecture optimized for consumer electronics devices, including delivering the latest applications to consumers without the need for software downloads or frequent firmware updates.
- Devices featuring VUDU Apps* will begin shipping to consumers since the first quarter of this year.
- VUDU Apps** allows you to see app updates while watching live television.

Operation instructions

You can access the VUDU Apps by the following methods:

1. Press the [Hi-Smart] button to display network main menu.
2. Press [◀/▶/▲/▼] button to select the VUDU Apps icon and press [ENTER] to enter it.
3. Press [◀/▶/▲/▼] button to select the widget you want to access, and press [ENTER] to enter it.
4. You can press [RETURN] to return the upper menu or press [EXIT] button to close the Widgets display.

VUDU Apps home page



Title	Function
My favorites	The user's favorite applications
Most popular	The most popular applications
Newest	The newest applications in VUDU
Browse by genre	Browse applications by genre
Show Ticker	Show the applications at the bottom of screen while watching TV
Info&settings	VUDU Apps system information

Netflix

Netflix unlimited membership required.

Brief introduction

Instantly watch thousands of TV episodes & movies streaming over the Internet from Netflix. Unlimited membership required.

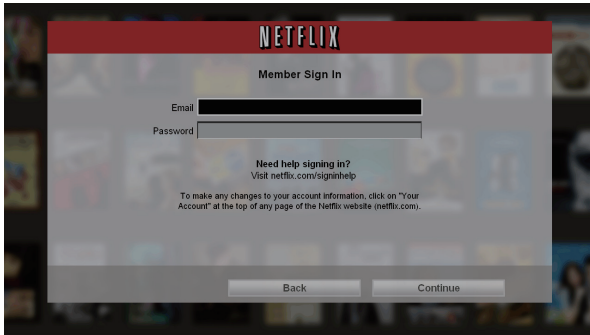
NOTES

- TV screen may be difference with picture.
- For more information on Netflix visit <http://www.netflix.com/help> or login to your Netflix account and click "Help" at the top of the page.
- Your broadband fluency and picture quality depend on the network speed and original bit rate.
- Illustrations are examples and may differ from the actual Netflix screens. The display and operations may change as a result of a software update. Use Netflix without configuring a proxy server. Part or all of Netflix may not be available when connecting to the Internet via a proxy server.

Advanced Features

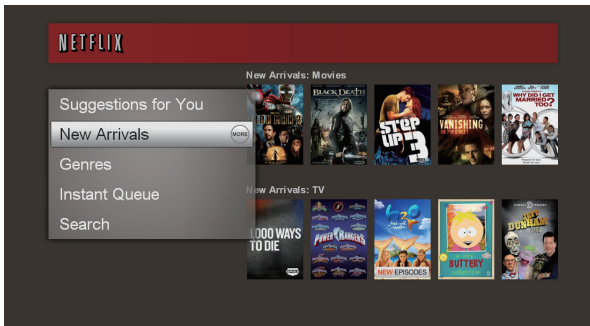
❏ Operation instructions

1. Press the [Hi-Smart] button to display network main menu.
2. Press [◀/▶/▲/▼] button to select the Netflix icon and press [ENTER] to enter it, or press [NETFLIX] button to enter Netflix website directly.
3. Input Email and Password in following window to sign in. (Refer to “How to Input the Email Address”)



4. Press [▲/▼/◀/▶] button to move the cursor to select service items in the Netflix home page, and [ENTER] button to confirm.
5. In the process of watching a movie, press operational buttons to control the movie.
6. Press [RETURN] button to return the upper menu, or press [EXIT] button to close the menu.

❏ Netflix Movies home page



Title	Function
Suggestions for you	The movies suggested for you by Netflix
New Arrivals	The new arrivals
Genres	Browse movies in different genres
Instant Queue	Your list of movies
Search	Search for available titles

Opera

❏ The function of the buttons on the remote control

Buttons	Description
▲/▼/◀/▶	Press these buttons to move the cursor on the screen as the mouse of the computer.
MENU	Press the button to display/cancel the keyboard on the screen.
ENTER	Press the button to confirm the selection. Press the button twice to search the new website.

❏ Operation instructions

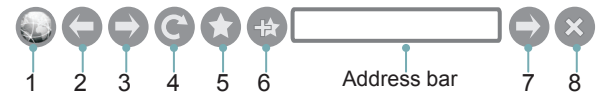
● How to enter the Opera Browser

The Network setup must be correct. Then you can use the network.

1. Press the [Hi-Smart] button to display network main menu.
2. Press [◀/▶/▲/▼] button to select the opera icon and press [ENTER] to enter it.



3. Then the default interface will appears on the screen. There are some function icons on the bottom of the screen:



● The function of the buttons on the screen:

1. Back to main page.
Move the cursor to the icon and press [ENTER] button to return to the default interface.
2. Back to previous page.
Move the cursor to the icon and press [ENTER] button to return to the previous viewed web page.
3. Return a page.
Move the cursor to the icon and press [ENTER] button to go forward to the previous viewed web pages.

Advanced Features

- Refresh page.
Move the cursor to the icon and press [ENTER] button to refresh the current page.
- Folder.
Move the cursor to the icon and press [ENTER] button to enter the favorite folder.
- Add Folder.
Move the cursor to the icon and press [ENTER] button to add the website to the favorite folder.
- Address bar.
Input the website you want to view.
- Sure to enter the Address of the page
Move the cursor to the icon and press [ENTER] button to search the website.
- Exit Opera.
Move the cursor to the icon and press [ENTER] button to close the page.

● How to Input the New Address



- Press [▲/▼/◀/▶] button to move the cursor to the address bar and press [ENTER] button to confirm.
- Press [MENU] to display the keyboard.
There are some shortcuts on the bottom of the keyboard so that you can input part of the address often used directly.
Other keys are used as the keyboard of your
- Press [▲/▼/◀/▶] button to move the cursor to the characters you want to select and then press [ENTER] button to confirm.
If you want to delete one character, move the cursor to Back key and press [ENTER] button to confirm. Or if you want to re-enter all the characters, move the cursor to Reset key and press [ENTER] button to confirm.
- Move the cursor to Enter key and press [ENTER] button to confirm if you have completed the address input.
Then the new address will appear on the address bar.
- Move the cursor to the address bar and press [ENTER] button twice to enter the website.
Or move the cursor to the → and press [ENTER] button to search.

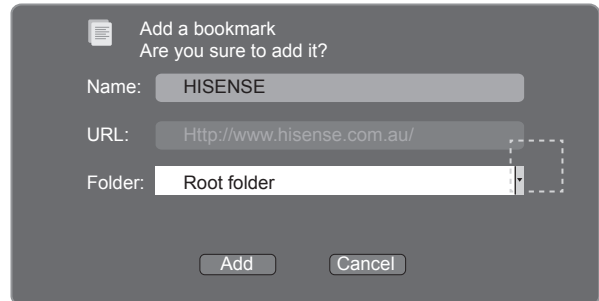
NOTE

There is only recommend to open the English website.

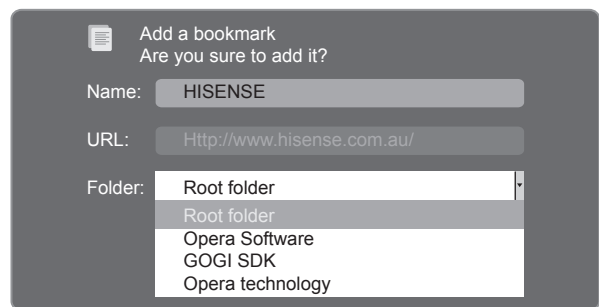
● How to Add a Bookmark

If you want to find the often viewed website from the favorite folder, you can follow the steps to add it to the folder.

- Input the address on the address bar and enter it.
- Press [▲/▼/◀/▶] button to move the cursor to the ⚙️ and press [ENTER] button to confirm.
The menu will pop up on the screen.



- Press [▲/▼/◀/▶] button to move the cursor to the icon marked with dashed box on the right screen. Then press [ENTER] button to confirm to display all the folders.
- Press [▲/▼] button to select the folder you want to add the bookmark to. And press [ENTER] button to confirm.
- Move the cursor to the Add button and then press [ENTER] button to confirm.
If you do not want to add the book mark, move the cursor to the Cancel button and press [ENTER] button to confirm.

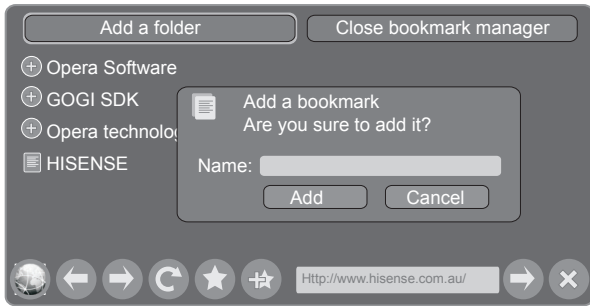


● How to Add a Folder

You can add a folder to the favorite as follows:

- Move the cursor to the ⚙️ icon and press [ENTER] button to confirm. The menu will pop up on the screen.
- Move the cursor to Add a folder button and press [ENTER] button to confirm.
A pop-up menu appears on the screen.
- Move the cursor to Name bar and press [ENTER] button to confirm. Follow the steps 2~4 in “How to Input the New Address” to input the name.
- Move the cursor to Add button and press [ENTER] button to confirm and the new folder has been added.

Advanced Features

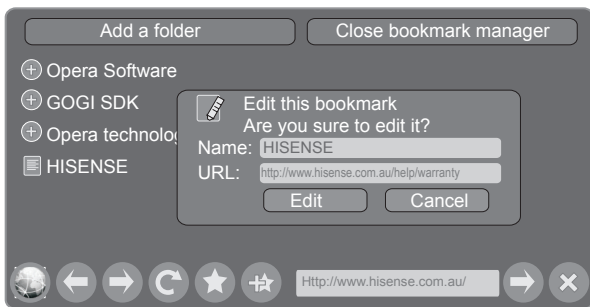


● How to Edit/Delete a Folder/Bookmark

1. Move the cursor to the ★ icon and press [ENTER] button to confirm. The menu will pop up on the screen.
2. Move the cursor to the folder /bookmark directly and there will be two icons on the right of it. Move the cursor to one of the icons and press [ENTER] button to display a pop-up menu.

: Edit button.

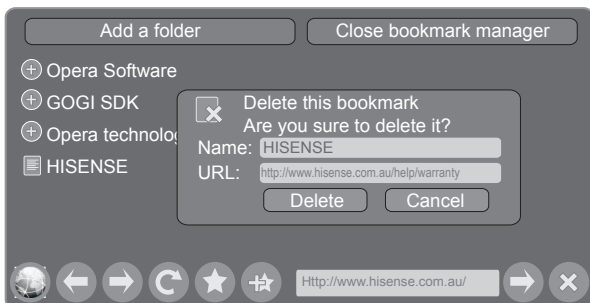
- 1). Move the cursor to the Name/URL bar and press [ENTER] button to confirm. Follow the steps 2~4 in "How to Input the New Address" to edit it.



- 2). Move the cursor to Edit button, then press [ENTER] to confirm and the folder/bookmark will be saved.

: Delete button.

Move the cursor to the Delete button and press [ENTER] button to confirm. Then the folder/bookmark will be deleted from the favorite folder.

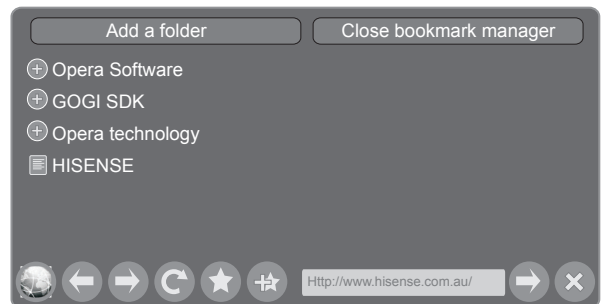


NOTE

There is only Name bar on the pop-up menu for folder.

● How to select the Website from the favorite folder

1. Move the cursor to the ★ icon and press [ENTER] button to confirm. The menu will pop up on the screen.
2. Move the cursor to the + icon before the folder name and press [ENTER] button to confirm. The websites in the folder will appear in the following lines.
3. Move the cursor to the website you want to view and press [ENTER] button to confirm. If the website is in the root folder, you can select it directly. And do not need operate as step 2.



● How to exit the manager

Move the cursor to the Close bookmark manager icon and press [ENTER] button to confirm.

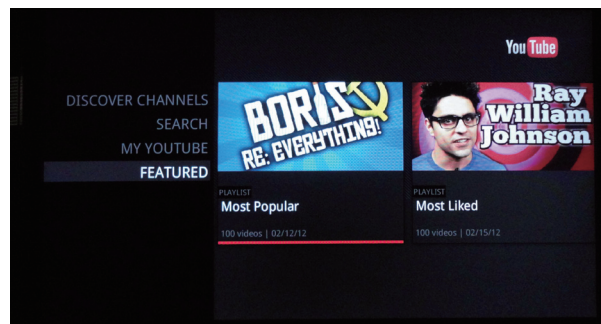
YouTube

Brief introduction

Watches the video via YouTube.

Operation introduction

1. Press the [Hi-Smart] button to display network main menu.
2. Press [▲/▼/◀/▶] button to select the YouTube icon and press [ENTER] to enter it.

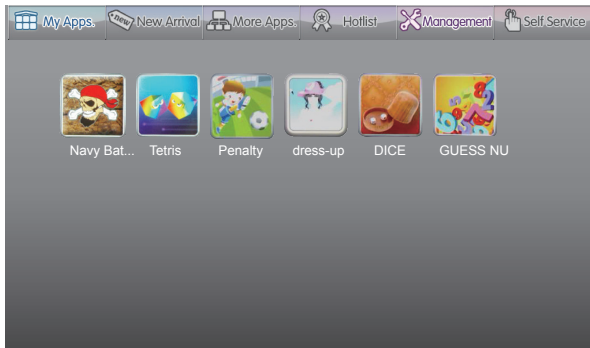


Advanced Features

Other Apps

Operation introduction

1. Press the [Hi-Smart] button to display network main menu.
2. Press [▲/▼/◀/▶] button to select the Other Apps and press [ENTER] to enter it.



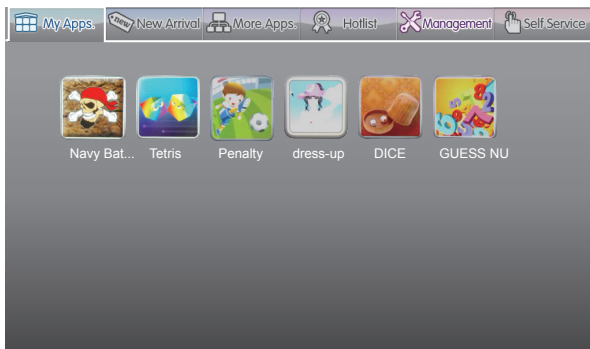
Title	Function
My Apps.	Your local applications
New Arrival	The applications of the latest online
More Apps.	Applications classification to download
Hotlist	The pop ranking applications
Management	Delete the local applications
SelfService	View the service information

3. Follow the steps as following.

● My Apps:

Display the applications of downloaded and installed on the local.

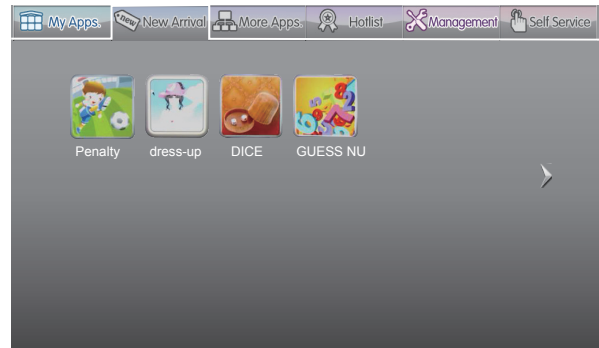
- 1) Press [◀/▶] to select the title of My Apps and press [▼/ENTER] to enter it.



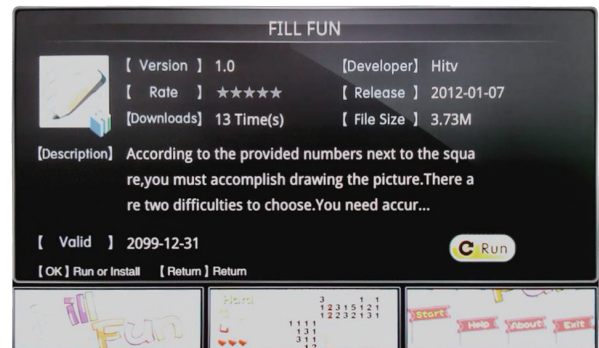
- 2) Press [▲/▼/◀/▶] to select the applications you want to enter and press [Enter] to confirm.
- 3) Press [RETURN] to return to the title.

● New Arrival:

- 1) Press [◀/▶] to select the title of New Arrival and press [▼/ENTER] to enter it.



- 2) Press [▲/▼/◀/▶] to select the applications you want to install and press [ENTER] to confirm.



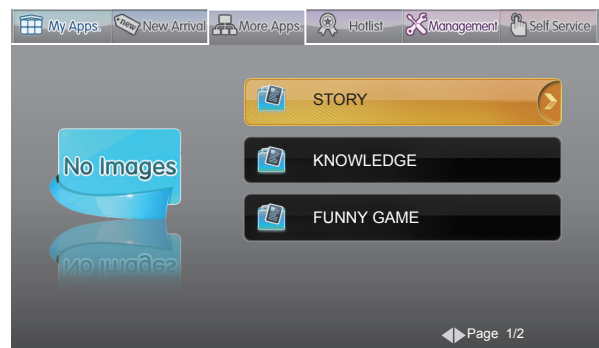
- 3) Press [ENTER] to install the applications or press [RETURN] to return to the new arrival home page. If installed, the application will be shown in My Apps interface.

- 4) Press [RETURN] to return to the title.

● More Apps:

Classify the applications by story, knowledge and funny game.

- 1) Press [◀/▶] to select the title of More Apps and press [▼/ENTER] to enter it.



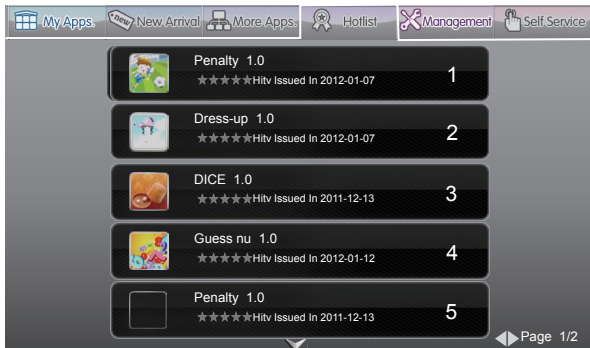
- 2) Press [▲/▼] to select the classification and press [ENTER] to confirm.
- 3) Press [▲/▼/◀/▶] to select the applications you want to install and press [ENTER] to confirm.
- 4) Press [ENTER] to install the applications or press [RETURN] to return to the More Apps home page.

Advanced Features

If installed, the applications will be shown in My Apps interface.

● Hotlist:

- 1) Press [◀/▶] to select the title of Hotlist and press [▼/ENTER] to enter it.



- 2) Press [◀/▶] to page up/down and press [▲/▼] to select the applications you want to install and press [ENTER] to confirm.

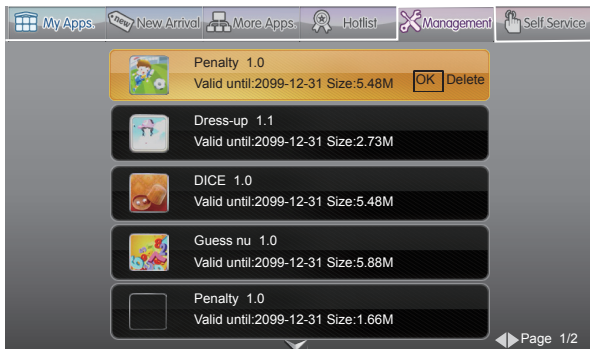
- 3) Press [ENTER] to install the applications or press [RETURN] to return to the Hotlist homepage.

If installed, the applications will be shown in My Apps interface.

- 4) Press [RETURN] to return to the title.

● Management:

- 1) Press [◀/▶] to select the title of Management and press [▼/ENTER] to enter it.



- 2) Press [◀/▶] to page up/down and press [▲/▼] to select the applications you want to delete.

- 3) Press [ENTER] to display the menu.

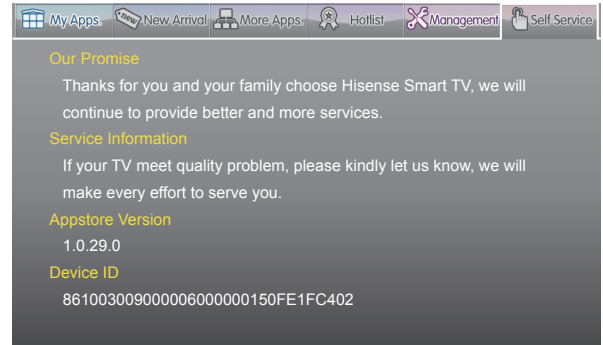


- 4) Press [◀/▶] to select Yes/No and press [ENTER] to delete.

- 5) Press [RETURN] to return to the title.

● SelfService:

Press [◀/▶] to select the title of SelfService and press [ENTER] to view the service information.



Other Information

- **VUDU customer care:** To learn more about VUDU, visit the frequently Asked questions at www.vudu.com/support.

- **Netflix customer service:**

US: (866) 716-0414

Canada: (866) 348-2353

Advanced Features

Digital Media Play

Please note that Hisense will not assume any responsibility for any lost data and cannot guarantee perfect compatibility with all mass storage devices. Be sure to insert the USB disk or mobile hard disk with standard USB2.0 port.

- Press [INPUT] button to display the INPUT menu, press [▲/▼] button to highlight the Hi-DMP source, then press [ENTER] button to confirm. (If you want to exit Hi-DMP, you can press [INPUT] button to switch to other sources).
 - Press [RED] button to switch the media type.
 - Press [YELLOW/BLUE] to turn to the previous/next page.
1. Press [▲/▼/◀/▶] button to select the folder/file you want to open and then press [ENTER] to enter/play the folder/file.
 2. Press [RETURN] to return to the previous directory.



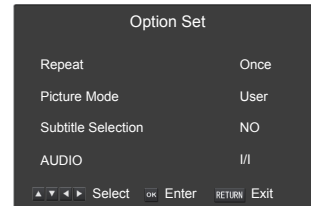
Enjoy Video Files

1. Press [RED] button to switch to All or Video.
 2. Press [▲/▼/◀/▶] to select the video you want to view.
 3. Press [ENTER] to play the video.
 4. Press [■/RETURN] to exit the video and return to the previous directory.
 5. Press [ENTER] button to display/exit the video control bar.
 6. Press [◀/▶] button to select the function icon and then press [ENTER] to confirm.
- **Tool bar**



1. The progress bar when playing.
2. Play/Pause. You can press [▶||] directly to play/pause when there is no control bar on the screen.
3. Play the previous video. You can press [◀◀] directly to achieve the function when no control bar display on the screen.

4. Play the next video. You can press [▶▶] to achieve the function when no control bar display on the screen.
5. Fast backward. Then press [ENTER] to select the backward speed. You can press [◀◀] to achieve the function.
6. Fast forward. Then press [ENTER] to select the forward speed. You can press [▶▶] to achieve the function.
7. Select time to play
 - 1) Press [◀/▶] to select the position you want to set.
 - 2) Press [0~9] to set the time and press [▲/▼/◀/▶] to adjust it.
 - 3) Press [ENTER] to confirm and the video will to play at the time you have set.
8. Play list
 - 1) Press Yellow/Blue button to page and press [▲/▼] to select the video.



- 2) Press [ENTER] to confirm. And press [Exit] to exit the menu.
9. Options
 - 1) Press [▲/▼] to select the options in the menu.
 - 2) Press [◀/▶] to select the settings.
 - 3) Press [ENTER] to confirm.
10. Program info

Allows you to view the program information.
11. Stop playback

NOTE

You can press [ASPECT] button to change the aspect ratio (Normal, Full Screen, Original Size) while playing the video.

Playable format list

Files Format	Playable format
Photo	JPG
Music	Mp3
Video	MPEG1(.dat), MPEG2(.mpg/.ts), XVID (.avi), H.264(.mov/.ts/.mkv)

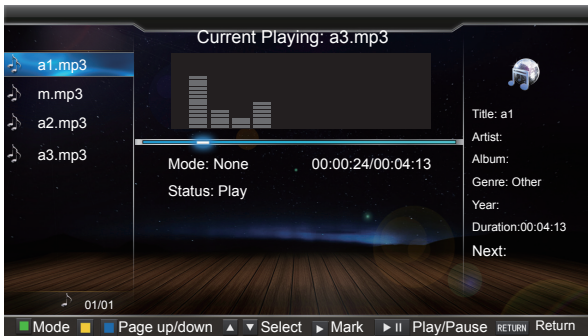
Advanced Features

Enjoy Music Files

1. Press [RED] button to switch to All or Music.
2. Press [▲/▼/◀/▶] to select the music you want to view.



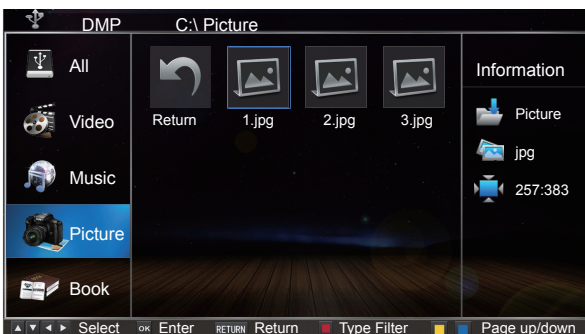
3. Press [ENTER] to play the music.



4. All the music is listed on the left. Press [▲/▼] button to select the music and press [▶] button to mark it. You can press [YELLOW/BLUE] button to turn to the previous / next page.
 - Press [GREEN] button to select the Mode: Mark/All/Single.
5. Press [RETURN] to exit the music playback interface.

Browse the Pictures

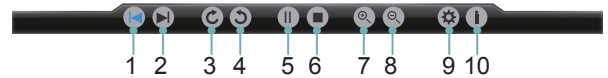
1. Press [RED] button to switch to All or Picture.



2. Press [▲/▼/◀/▶] to select the picture you want to view.

3. Press [ENTER] to browse the picture.
4. Press [■/RETURN] to exit the picture and return to the previous directory.

● Tool bar



When browsing the pictures

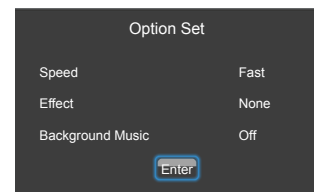
Press [ENTER] button to display/exit the picture control bar, and press [◀/▶] button to select the function icon and then press [ENTER] button to confirm.

1. Browse the previous picture. You can press [◀◀] button directly to achieve the function when no control bar displays on the screen.
2. Browse the next picture. You can press [▶▶] button directly to achieve the function when no control bar displays on the screen.
3. Allows the picture to rotate 90 degrees clockwise.
4. Allows the picture to rotate 90 degrees anti-clockwise.
5. Play/pause. You can press [ENTER] button directly when no control bar on the screen.
6. Stop browsing the picture. You can press [■] button directly when no control bar on the screen.
7. Zoom in the picture.
8. Zoom out the picture.
9. Option Set. Press [▲/▼] button to select the options and press [◀/▶] button to set them.

Speed - Allows you to browse the picture at different speed.

Effect - Allows you to set how the picture appears on the screen.

Background Music - Allows you to enjoy the music when browsing the pictures if it is set On.



10. Picture info. Allows you to view the picture information.

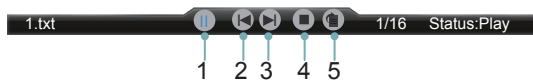
Browse the Text Files

1. Press [RED] button to switch to All or Book.
2. Press [▲/▼/◀/▶] to select the text you want to view.



3. Press [ENTER] button to confirm.
4. Press [■/RETURN] to exit the text and return to the previous directory.

● Tool bar

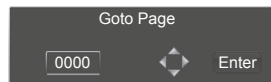


When browsing the text files

When no tool bar appears on the screen, you can press [▲/▼] to move the text lines up/down.

Press [ENTER] to display/exit the tool bar. Press [◀/▶] to select the corresponding icons and then press [ENTER] to confirm.

1. Stop/resume automatic page
2. View the previous page.
3. View the next page.
4. Stop browsing.
5. Allows you to select page to view.



- 1). Press [0~9] buttons to input the page or press [▲/▼] to adjust it.
- 2). Press [◀/▶] to select Enter and press [ENTER] to confirm.

Other Information

Trouble Shooting

When something appears wrong with your TV refer to below chart. If the proposed remedy's do not work , then unplug the AC cord from wall, wait at least 60 seconds, plug AC back in and then turn on the TV. If the problem still cannot be solved, please contact the help line provided on the warranty card or a professional technician.

<i>SYMPTOMS</i>	<i>POSSIBLE SOLUTIONS</i>
No sound or picture.	<ul style="list-style-type: none"> ● Check if the power cord is plugged into AC outlet and if it has electricity. ● Check if you have pressed [POWER] button on the TV or [POWER] button on the remote control. ● Check to see if LED light is either red or blue. If illuminated, power to TV is OK.
I have connected an external source to my TV and I get no picture and/or sound.	<ul style="list-style-type: none"> ● Check for the correct output connection on the external source and for the correct input connection on the TV. ● Make sure you have made the correct selection for the input mode for the incoming signal.
When I turn on my television, there is a few second delay before the picture appears. Is this normal?	Yes, this is normal. That is the TV searching for previous setting information and initializing the TV.
Picture is normal, but no sound.	<ul style="list-style-type: none"> ● Check the volume settings. ● Check if Mute mode is set "on".
Sound but no picture or black and white picture.	<ul style="list-style-type: none"> ● If black and white picture first unplug TV from AC outlet and re-plug after 60 seconds. ● Check Color Setting if picture is black and white.
Sound and picture distorted or appear wavy.	<ul style="list-style-type: none"> ● An electrical appliance may be affecting TV set. Turn off any appliances, if interference goes away, move appliance farther away from TV. ● Insert the power plug of the TV set into another power outlet.
Sound and picture is blurry or cuts out momentarily.	<ul style="list-style-type: none"> ● If using an external antenna, check the direction, position and connection of the antenna. ● Adjust the direction of your antenna or reset or fine tune the channel.
Horizontal/vertical stripe on picture or picture is shaking.	Check if there is interfering source nearby, such as appliance or electric tool.
The plastic cabinet makes a "clicking" type of sound.	"Click" sound can be caused when the room temperature changes. This change causes the television cabinet to expand or contract, which makes the sound. This is normal and the TV is OK.
Black square appears in the center of my television screen?	The Closed Caption function is set in the text mode. To remove it, access Closed Caption from the menu screen and change the Mode setting from text to either CC1 or off .
On some channels getting another language or sometimes no sound at all.	<p>That would indicate that the MTS mode on your unit is set to "SAP" mode. We suggest setting the MTS mode to either "Stereo" or "Mono". For further instruction, please see "MTS" in your user manual.</p> <ul style="list-style-type: none"> ● SAP is Second Audio Program. It's a second audio channel that is usually used for a second language or descriptive audio for the visually impaired. ● MTS stands for Multichannel Television Sound, a standard that allows the encoding of 3 channels of audio within a standard NTSC (analog) video signal to a television. A television that is able to receive MTS Stereo allows you to watch television with stereo sound.
Not getting all of my cable channels on the television or I'm only getting 13 channels.	Check the cable connection for an incoming signal. The best way to confirm signal is to use another TV and/or contact your cable company.
[CHA / V] don't work when I set the Channel to Cable? They work with the Air setting?	After switching to Cable, please auto program the channels. The TV will "remember" all the channels then the TV will allow you to surf the channels with [CH/ V] buttons.

Other Information

<i>SYMPTOMS</i>	<i>POSSIBLE SOLUTIONS</i>
Remote control does not work.	<ul style="list-style-type: none"> ● Confirm that TV still has power and is operational. ● Change the batteries in the remote control. ● Check if the batteries are correctly installed. ● Confirm the remote control is matched with the TV (see “Match the Remote Control with TV”). ● If using a universal remote, be sure to select the TV mode on the remote. ● If the remote still does not work: <ul style="list-style-type: none"> -remove and reinstall the batteries correctly to reset the remote or install new batteries. -press TV and then Power to turn on the TV. With a universal remote if you have reset or changed the batteries you will need to reprogram the remote for the other units. <p>MATCH: Turn on your TV using the Tap Pad located on the TV (see “Viewing the Control Panel). Aim your remote control within 6 inches of the lower left corner of your TV. Press the [-] and [LAST] buttons on the remote control simultaneously for at least 3 seconds. The LED at the top of your remote will light for one second and blink slowly three times to indicated the remote has paired with the TV.</p>
Network connection fail.	<ul style="list-style-type: none"> ● Check network physical connection, make sure connection is correct. ● Enter “Menu”, “Settings”, “Network”, “Configuration”, make sure configuration is correct according to your network service provider. ● Enter “Menu”, “Settings”, “Network”, “Configuration”, “Connection Test” to make sure that network connection test is successful.
Connect VUDU/Netflix fail.	<ul style="list-style-type: none"> ● Check network connection is correct, both physically and configuration. ● Enter “Menu”, “Settings”, “Network”, “Configuration”, “Connection Test” to make sure that network connection test is successful. ● For VUDU: Enter “Menu”, “Settings”, “Network”, “Configuration”, “Applications”, “VUDU”, “Deactivation” to reset VUDU account. ● For Netflix: Enter “Menu”, “Settings”, “Network”, “Configuration”, “Applications”, “Netflix”, “Deactivation” to reset Netflix account.
Log out VUDU/Netflix or change log in account.	<ul style="list-style-type: none"> ● For VUDU: <ol style="list-style-type: none"> 1. Press [EXIT] button on remote to exit VUDU. 2. Enter “Menu”, “Settings”, “Network”, “Configuration”, “Applications”, “VUDU”, “Deactivation” to reset VUDU account. ● For Netflix: <ol style="list-style-type: none"> 1. Press [EXIT] button on remote to exit VUDU. 2. Enter “Menu”, “Settings”, “Network”, “Configuration”, “Applications”, “Netflix”, “Deactivation” to reset Netflix account.
DLNA does not work.	<ul style="list-style-type: none"> ● Check network connection is correct, both physically and configuration. ● Make sure DLNA server (PC or Mac) has shared media content and TV has permission to access shared media. ● Enter “Menu”, “Settings”, “Network”, “Applications”, turn on “DLNA”. ● Select Hi-DMP source to find shared contents. Select “Hi-DMP” source by using [INPUT] button on remote or press [Hi-Smart] button and then select “Multi-Media” Icon.
How do I get the Hi-Smart Hub to work on my TV?	<ul style="list-style-type: none"> ● You need a broadband (high speed) Internet service with a speed of no less than 1.5 Mbps. ● Connect the TV to the Internet through your router by an ethernet cable or wireless connection. If the connection fails, check with your internet service provider or router manufacturer to determine if there is a firewall, content filter, or proxy settings that may block the TV from accessing the Internet. ● After connecting the TV to the Internet, press the [Hi-Smart] button on the remote to access the Hi-Smart Hub. <p>Caution: Do not try to repair the TV yourself. Refer all servicing to qualified repair personnel.</p>

Other Information

General

NOTE

Features, appearance and specifications are subject to change without notice.

Model Name		55T770DW
Dimension	Without Stand	Width: 49.1 inches (1247 mm) Height: 28.4 inches (722 mm) Depth: 1.8 inches (45 mm)
	With Stand	Width: 49.1 inches (1247 mm) Height: 31.0 inches (788 mm) Depth: 12.2 inches (309 mm)
Weight	Without Stand	55.1 lbs (25 kg)
	With Stand	59.5 lbs (27 kg)
LCD Panel Minimum size (diagonal)		55 inches
Screen resolution		1920 × 1080
Audio power		10 W + 10 W
Subwoofer		7W
Power consumption		Please refer to the rating label.
Power supply		120 V ~ 60 Hz
Receiving systems	Analog	NTSC
	Digital	NTSC / ATSC / QAM
Environmental conditions		Temperature: 41°F ~ 95°F (5°C~ 35°C) Humidity: 20%-80% RH Atmospheric pressure: 86 kPa - 106 kPa
Component Input		480 I / 60 Hz, 480 P / 60 Hz, 720 P / 60 Hz, 1080 I / 60 Hz, 1080 P / 60 Hz
VGA Input		VGA (640×480 / 60 Hz), SVGA (800×600 / 60 Hz), XGA (1024×768 / 60 Hz)
HDMI Input		RGB / 60 Hz (640×480, 800×600, 1024×768) YUV / 60 Hz (480 I, 480 P, 720 P, 1080 I, 1080 P)