

FIGURE 1
LCD TV (M/N: LTDN55T57XUS)
COVER REMOVED



FIGURE 2
LCD TV (M/N: LTDN55T57XUS)
POWER BOARD (COMPONENT SIDE)



FIGURE 3
LCD TV (M/N: LTDN55T57XUS)
POWER BOARD (SOLDERED SIDE)



FIGURE 4
LCD TV (M/N: LTDN55T57XUS)
HIGH VOLTAGE SIGNAL BOARD (COMPONENT SIDE)

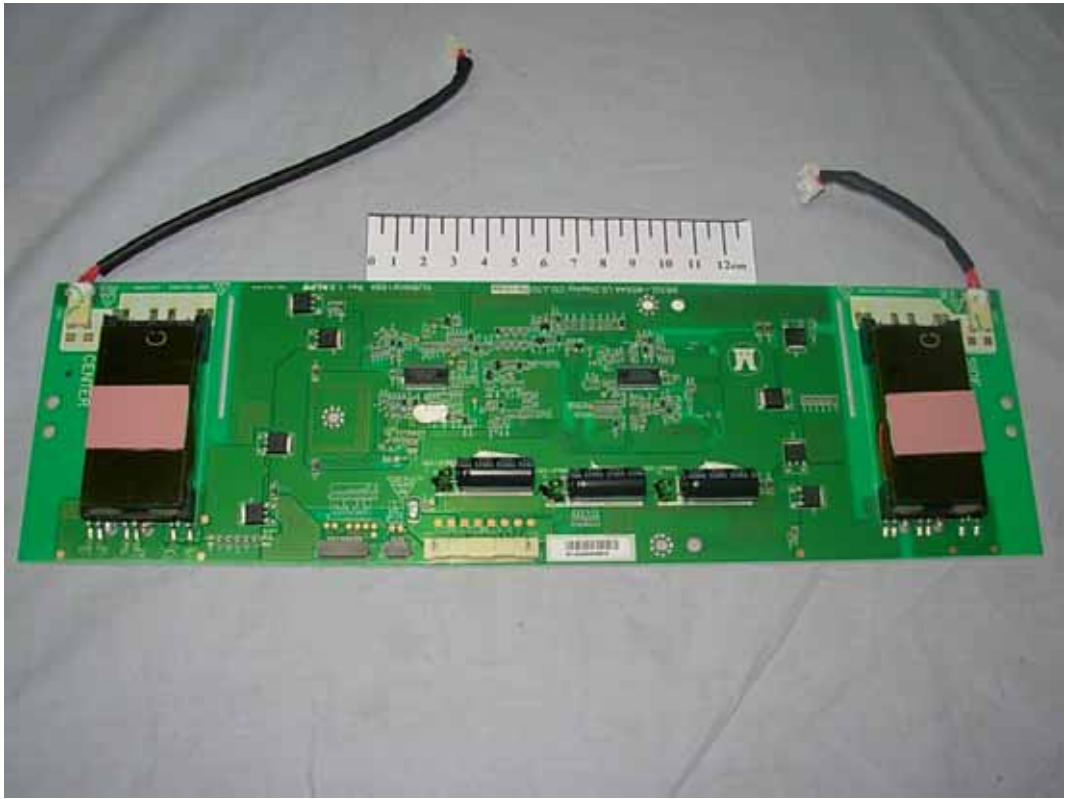


FIGURE 5
LCD TV (M/N: LTDN55T57XUS)
HIGH VOLTAGE SIGNAL BOARD (SOLDERED SIDE)

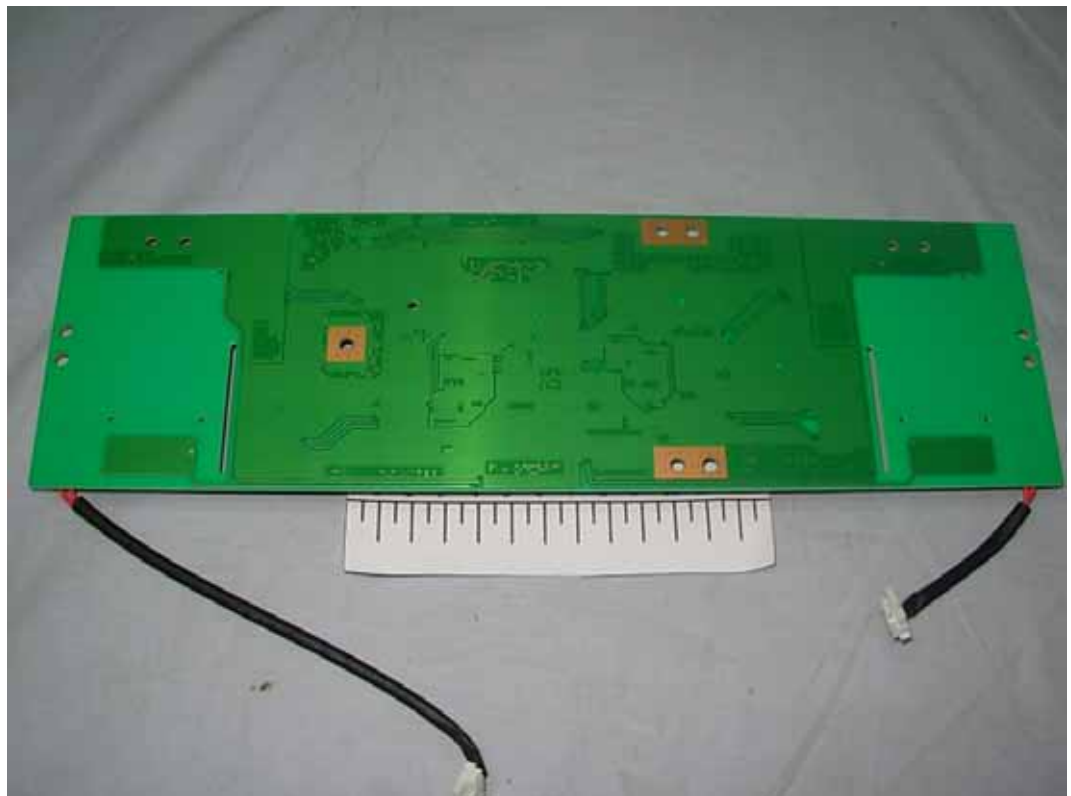


FIGURE 6
LCD TV (M/N: LTDN55T57XUS)
MAIN BOARD (COMPONENT SIDE)

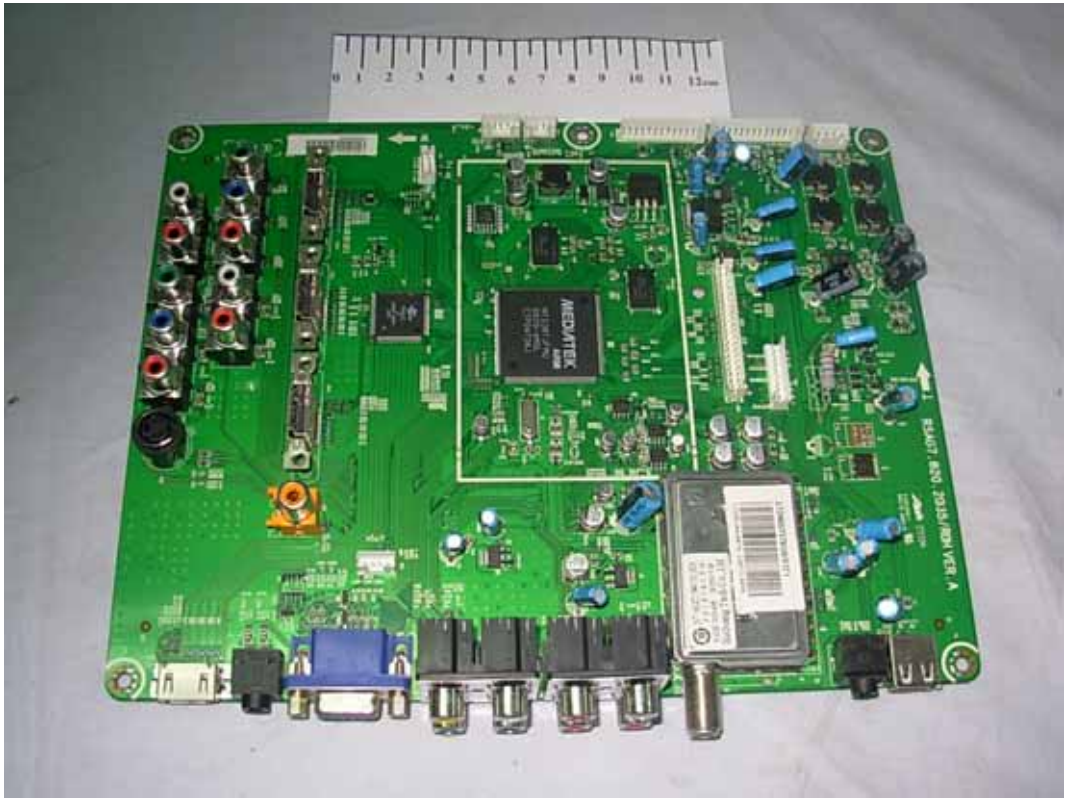


FIGURE 7
LCD TV (M/N: LTDN55T57XUS)
MAIN BOARD (SOLDERED SIDE)

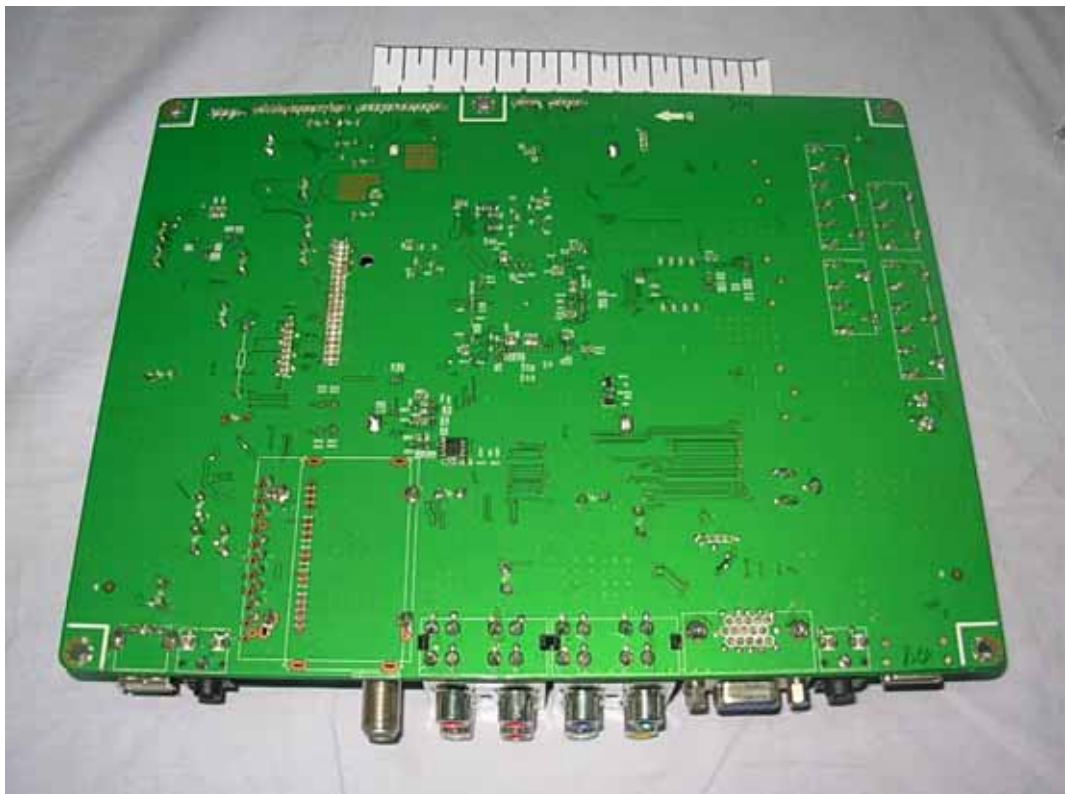


FIGURE 8
LCD TV (M/N: LTDN55T57XUS)
LABEL ON TUNER



FIGURE 9
LCD TV (M/N: LTDN55T57XUS)
CRYSTAL ON MAIN BOARD

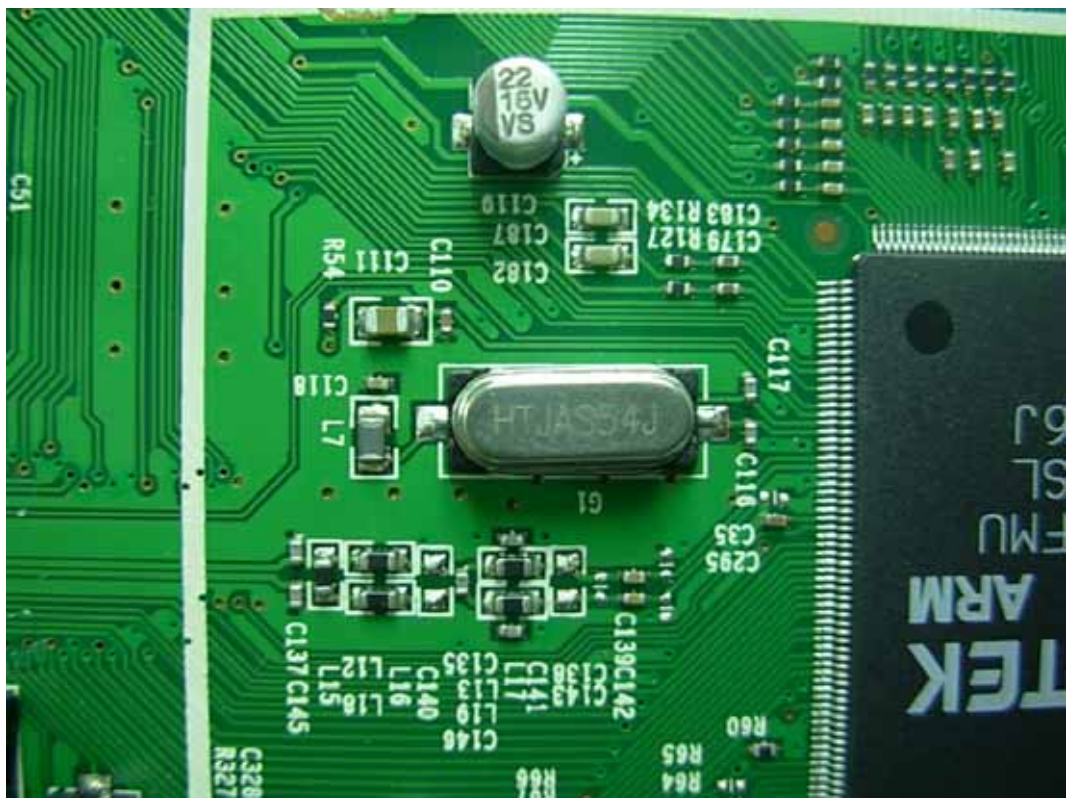


FIGURE 10
LCD TV (M/N: LTDN55T57XUS)
CHIP ON MAIN BOARD



FIGURE 11
LCD TV (M/N: LTDN55T57XUS)
LCD PANEL CONTROL BOARD (COMPONENT SIDE)



FIGURE 12
LCD TV (M/N: LTDN55T57XUS)
LCD PANEL CONTROL BOARD (SOLDERED SIDE)

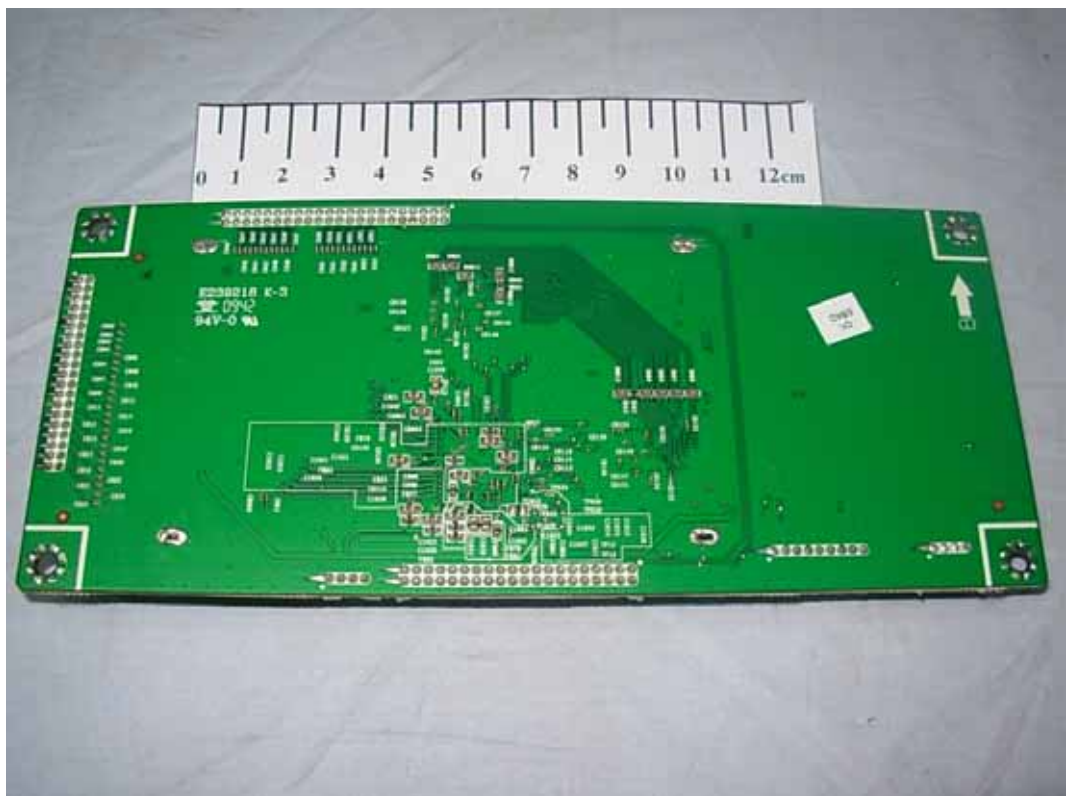


FIGURE 13
LCD TV (M/N: LTDN55T57XUS)
CHIP & CRYSTAL ON LCD PANEL CONTROL BOARD

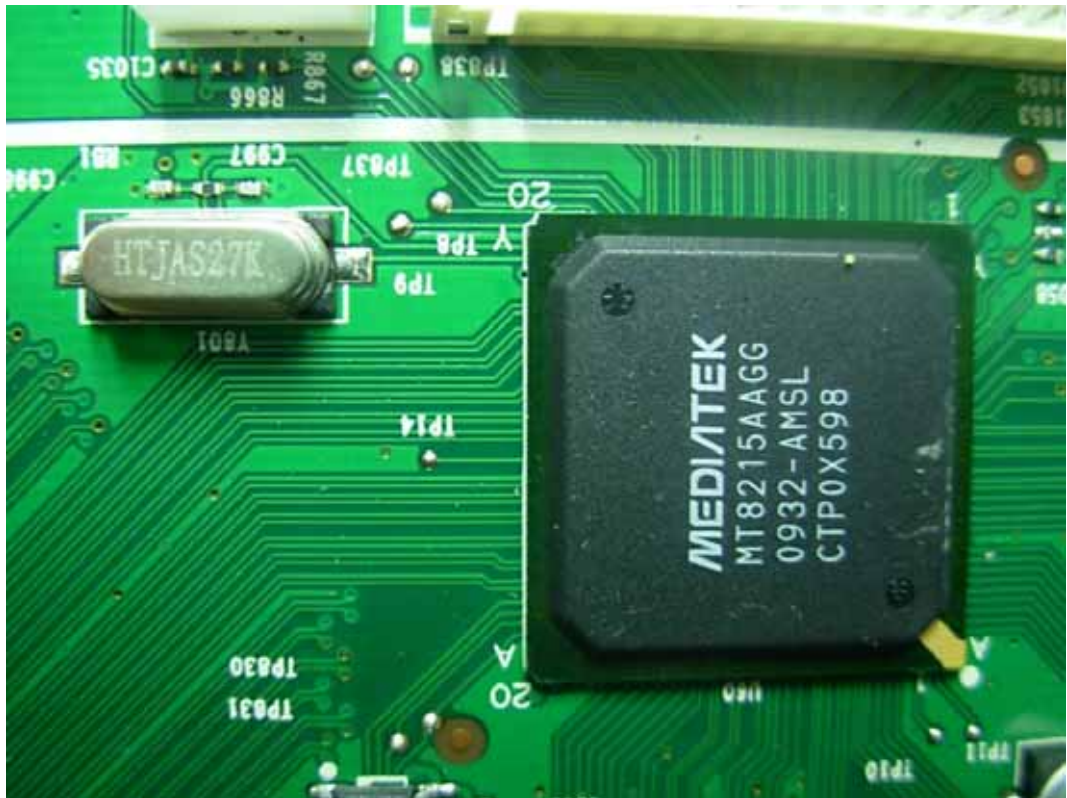


FIGURE 14
LCD TV (M/N: LTDN55T57XUS)
DISPLAY BOARD (COMPONENT SIDE)



FIGURE 15
LCD TV (M/N: LTDN55T57XUS)
DISPLAY BOARD (SOLDERED SIDE)

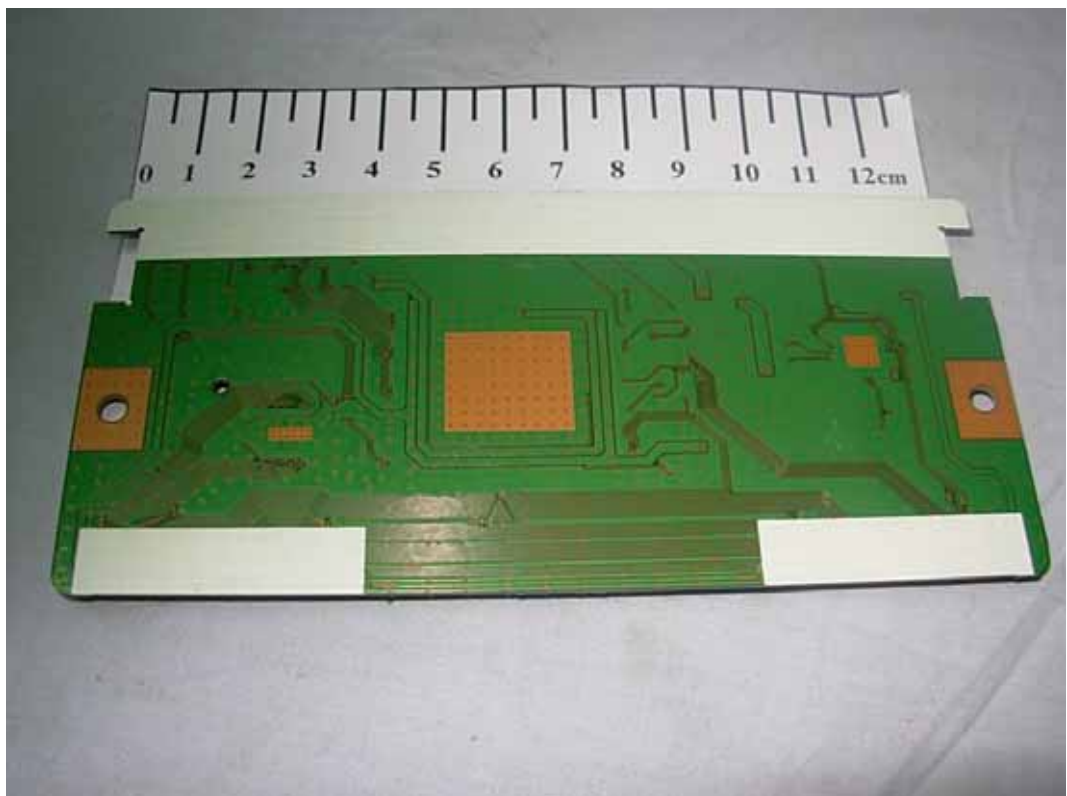


FIGURE 16
LCD TV (M/N: LTDN55T57XUS)
CHIP ON DISPLAY BOARD



FIGURE 17
LCD TV (M/N: LTDN55T57XUS)
KEY BOARD (COMPONENT SIDE)

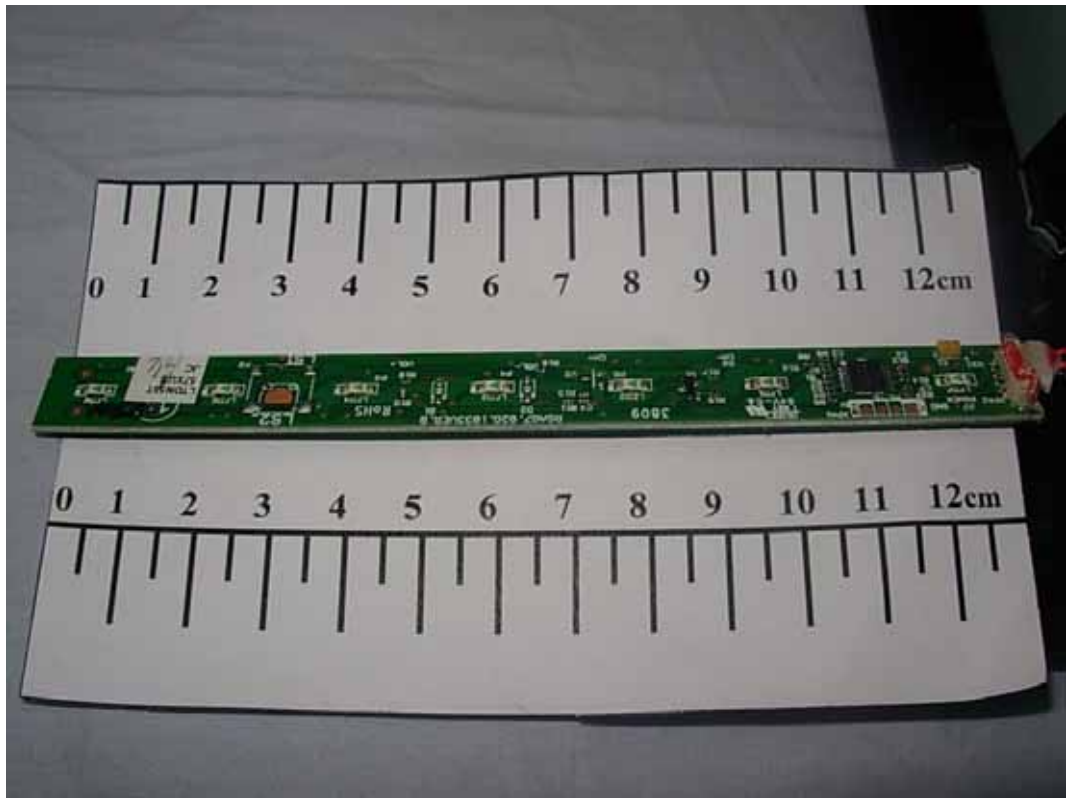


FIGURE 18
LCD TV (M/N: LTDN55T57XUS)
KEY BOARD (SOLDERED SIDE)

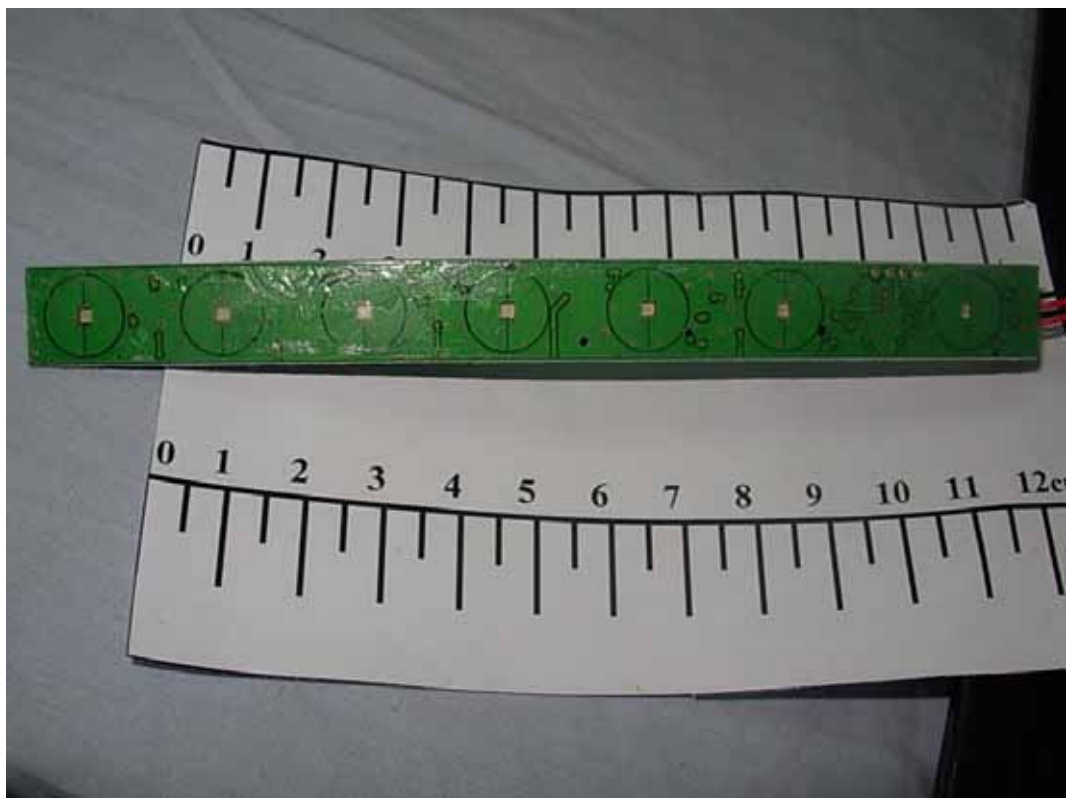


FIGURE 19
LCD TV (M/N: LTDN55T57XUS)
LED BOARD (COMPONENT SIDE)

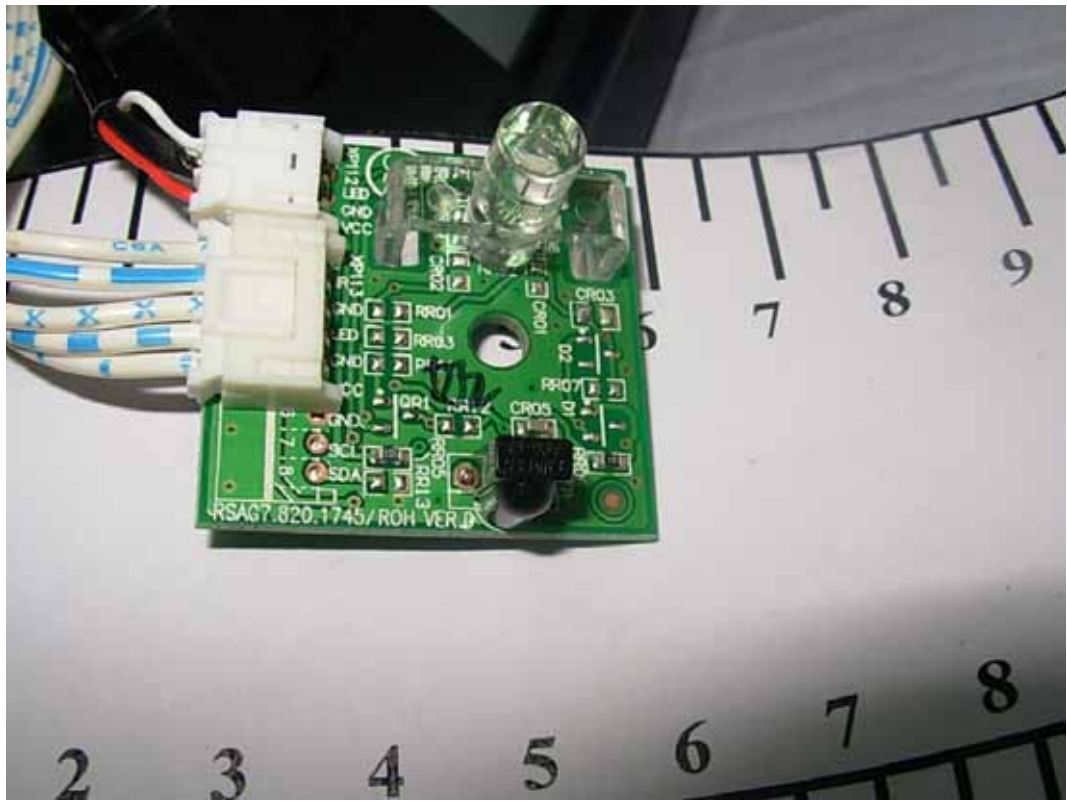


FIGURE 20
LCD TV (M/N: LTDN55T57XUS)
LED BOARD (SOLDERED SIDE)



FIGURE 21
LCD TV (M/N: LTDN55T57XUS)
DEBUG 1



FIGURE 22
LCD TV (M/N: LTDN55T57XUS)
DEBUG 2



FIGURE 23
LCD TV (M/N: LTDN55T57XUS)
DEBUG 3



FIGURE 24
LCD TV (M/N: LTDN55T57XUS)
DEBUG 4



FIGURE 25
LCD TV (M/N: LTDN55T57XUS)
DEBUG 5

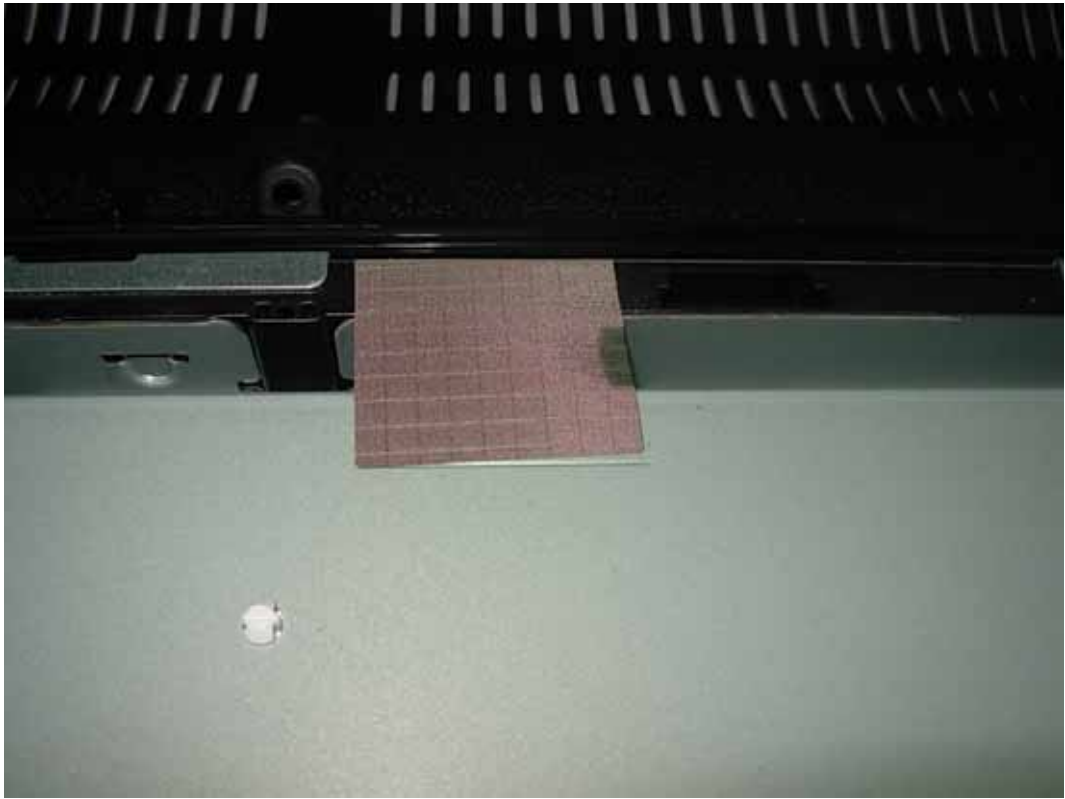


FIGURE 26
LCD TV (M/N: LTDN55T57XUS)
DEBUG 6

