

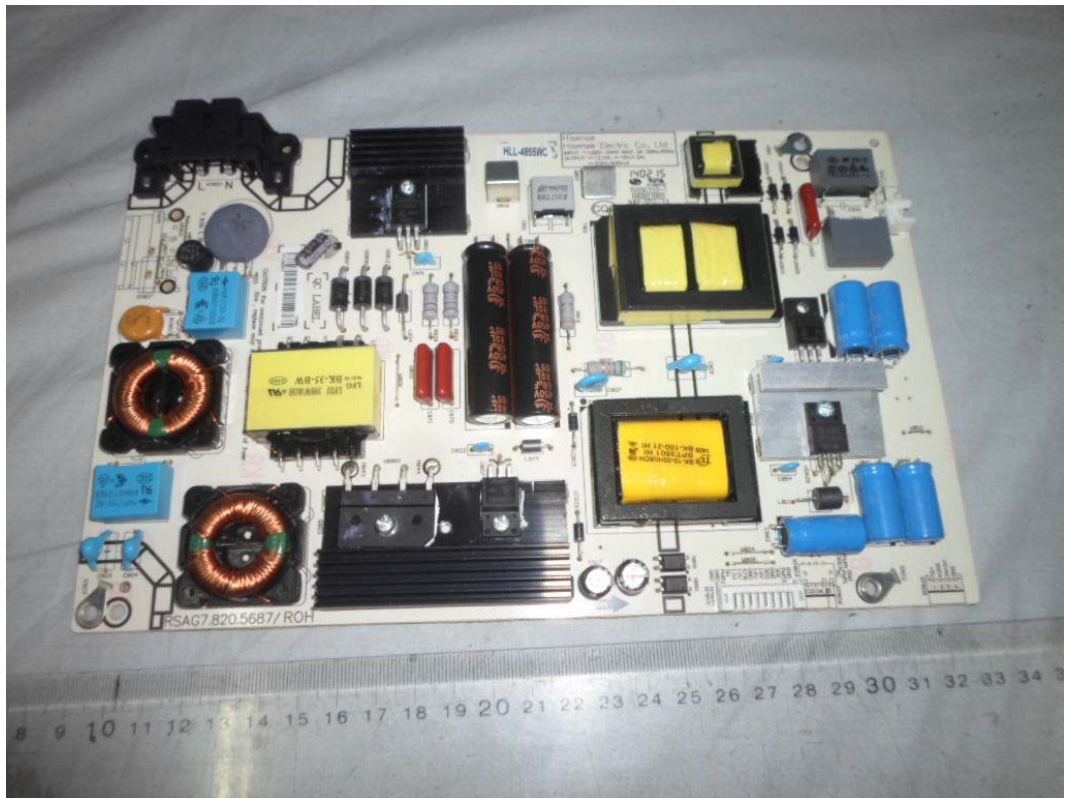
FIGURE 1
LED LCD TV (M/N: 48H4)
COVER REMOVED



FIGURE 2
LED LCD TV (M/N: 48H4)
LCD PANEL LABEL



*FIGURE 3
LED LCD TV (M/N: 48H4)
POWER BOARD (COMPONENT SIDE)*



*FIGURE 4
LED LCD TV (M/N: 48H4)
POWER BOARD (SOLDERED SIDE)*

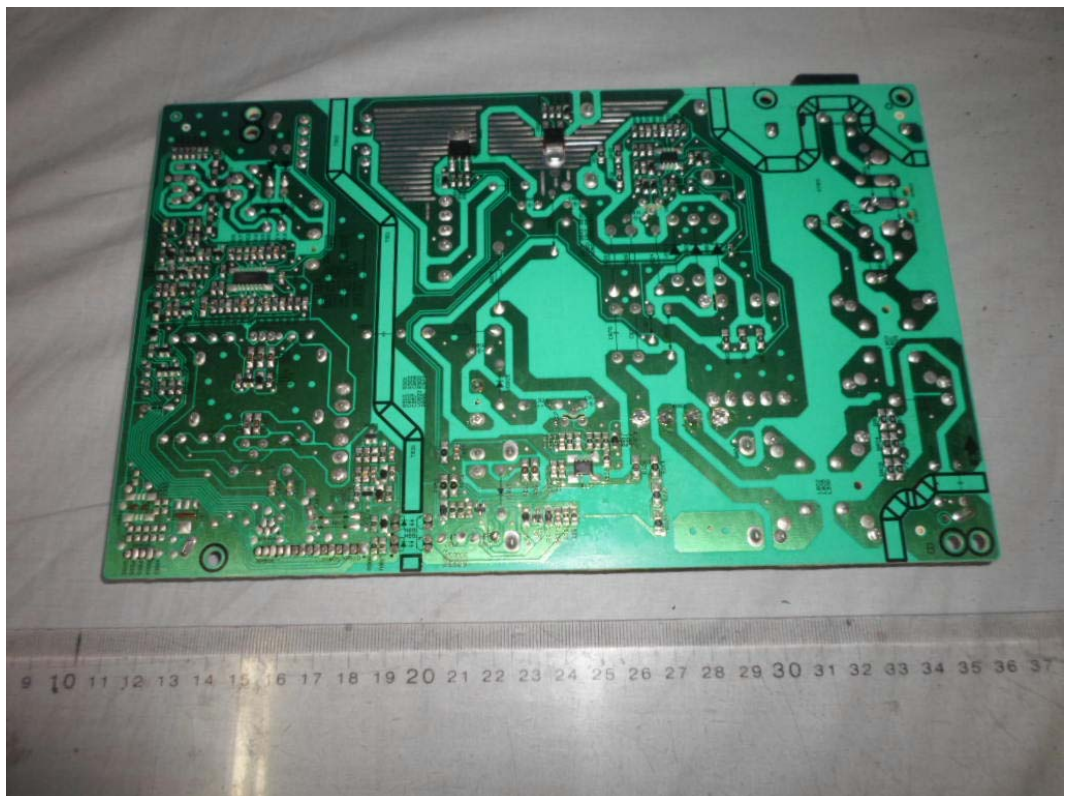


FIGURE 5
LED LCD TV (M/N: 48H4)
MAIN BOARD (COMPONENT SIDE)

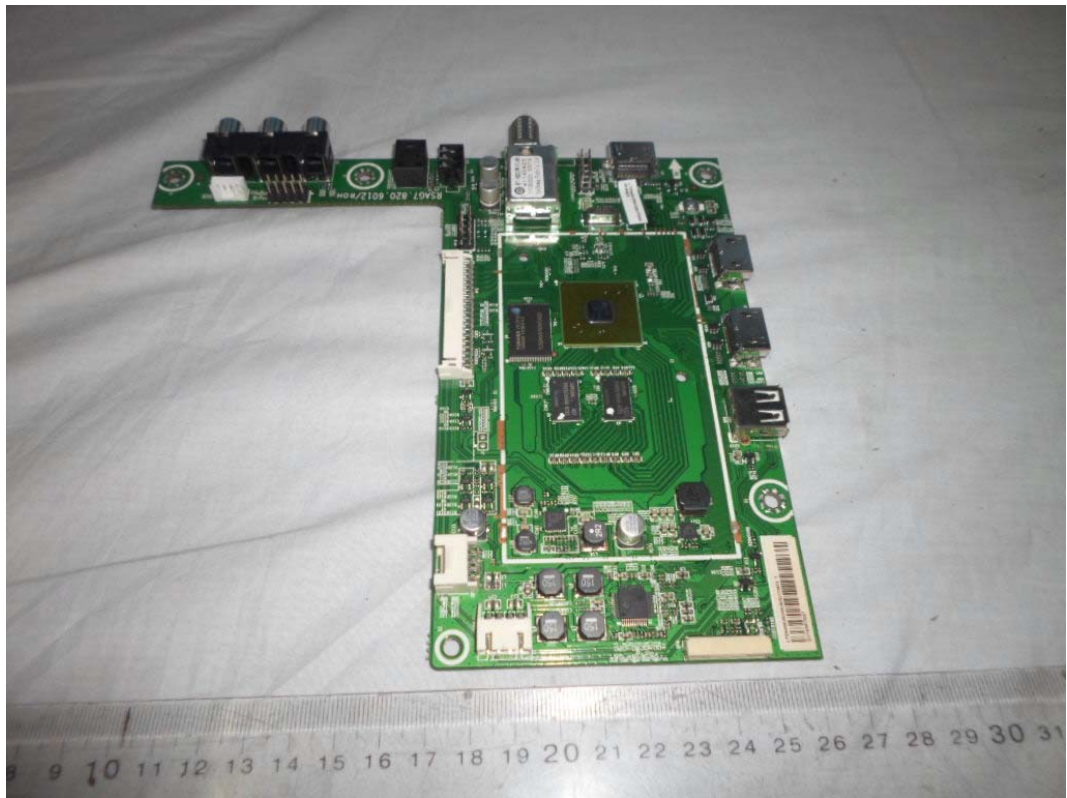


FIGURE 6
LED LCD TV (M/N: 48H4)
MAIN BOARD (SOLDERED SIDE)

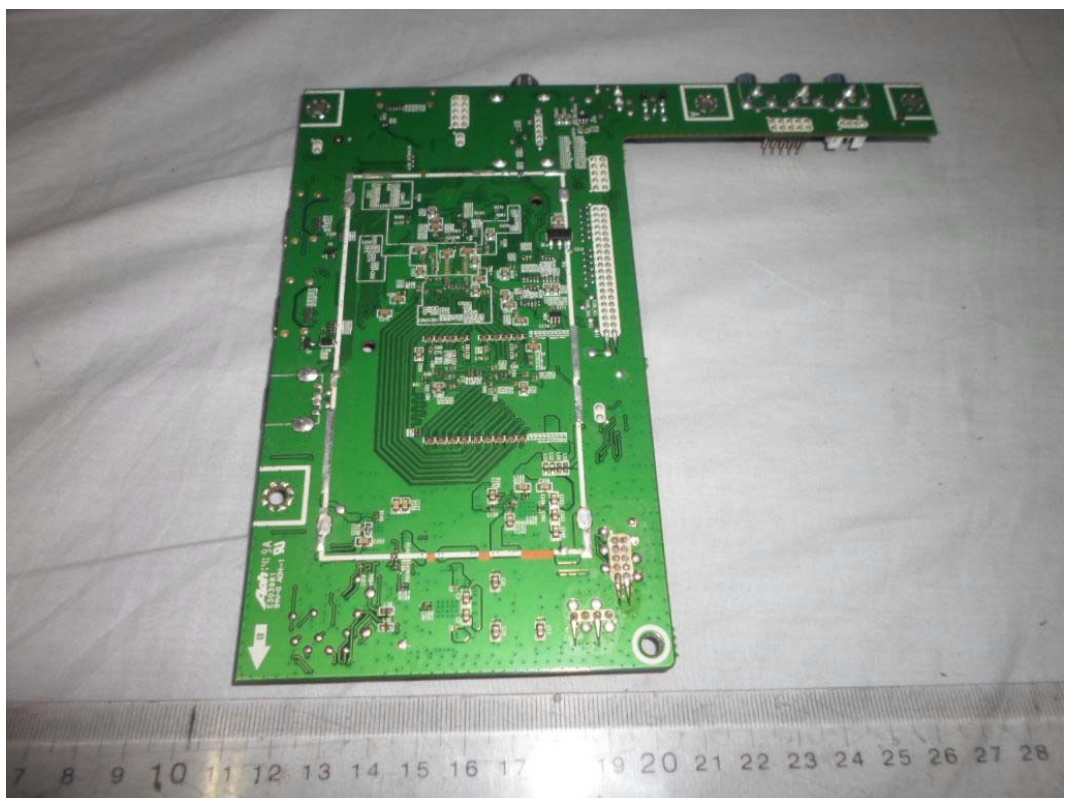


FIGURE 7
LED LCD TV (M/N: 48H4)
CRYSTAL ON MAIN BOARD

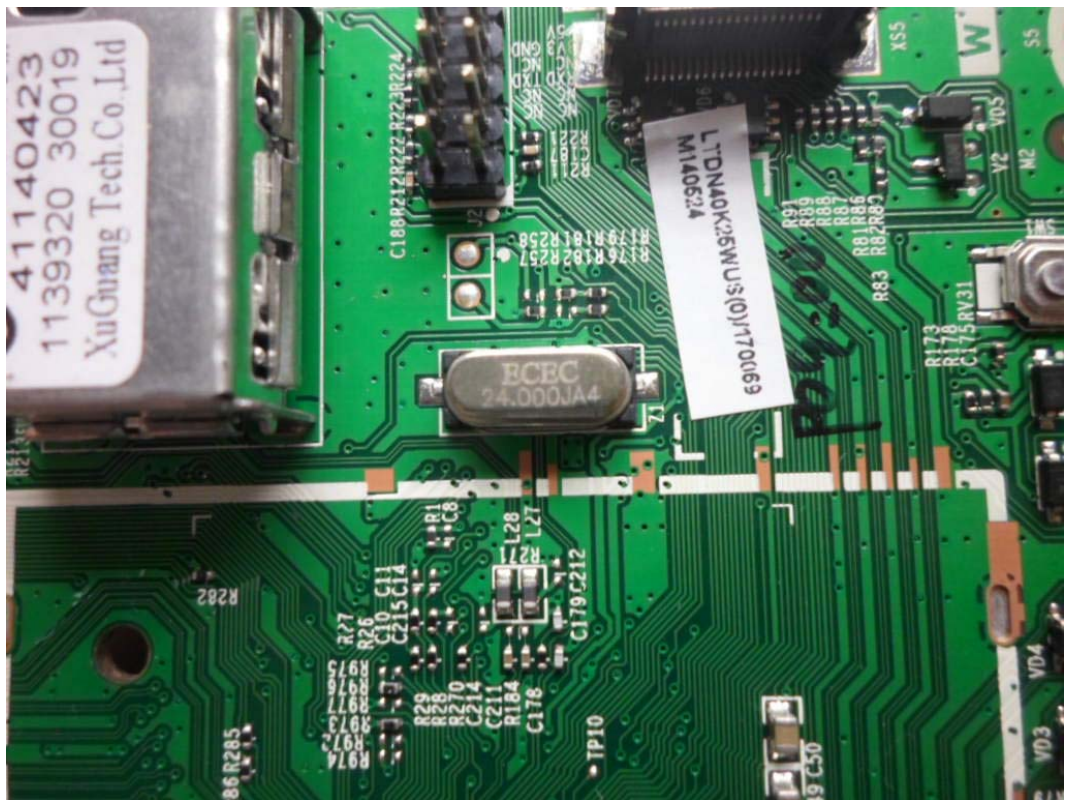


FIGURE 8
LED LCD TV (M/N: 48H4)
CHIP ON MAIN BOARD



FIGURE 9
LED LCD TV (M/N: 48H4)
TUNER ON MAIN BOARD



FIGURE 10
LED LCD TV (M/N: 48H4)
LCD PANEL CONTROL BOARD (COMPONENT SIDE)



FIGURE 11
LED LCD TV (M/N: 48H4)
LCD PANEL CONTROL BOARD (SOLDERED SIDE)

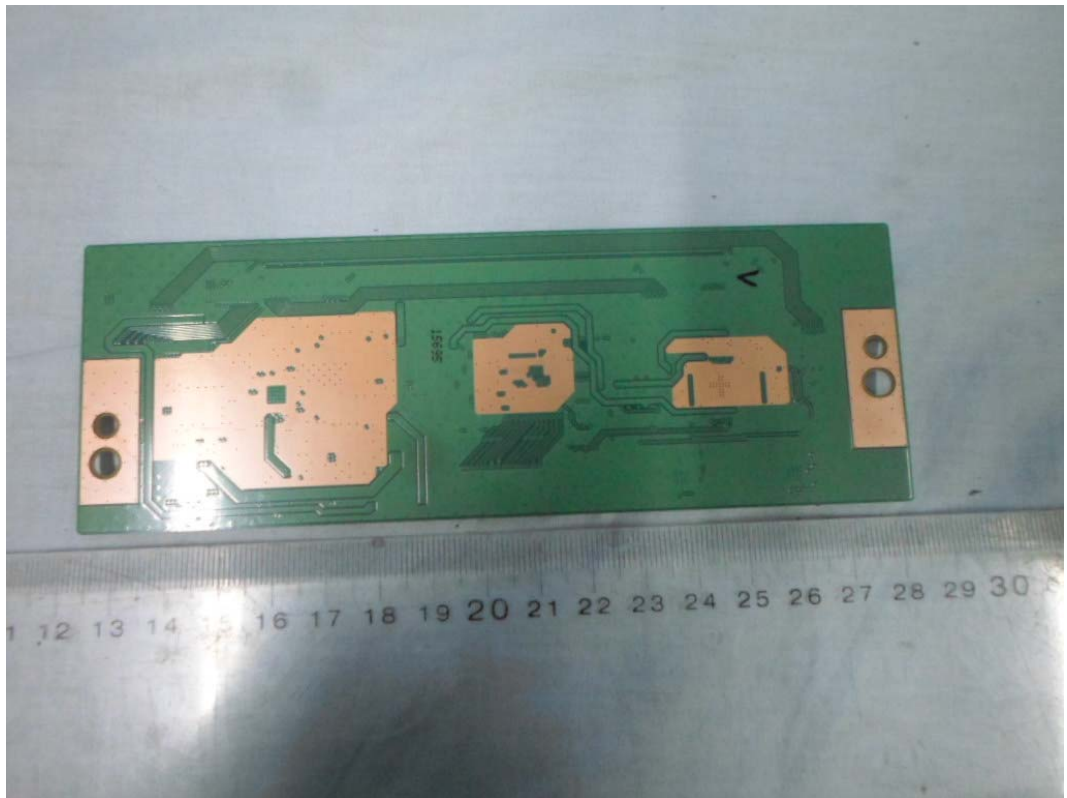


FIGURE 12
LED LCD TV (M/N: 48H4)
KEY BOARD (COMPONENT SIDE)



FIGURE 13
 LED LCD TV (M/N: 48H4)
 KEY BOARD (SOLDERED SIDE)

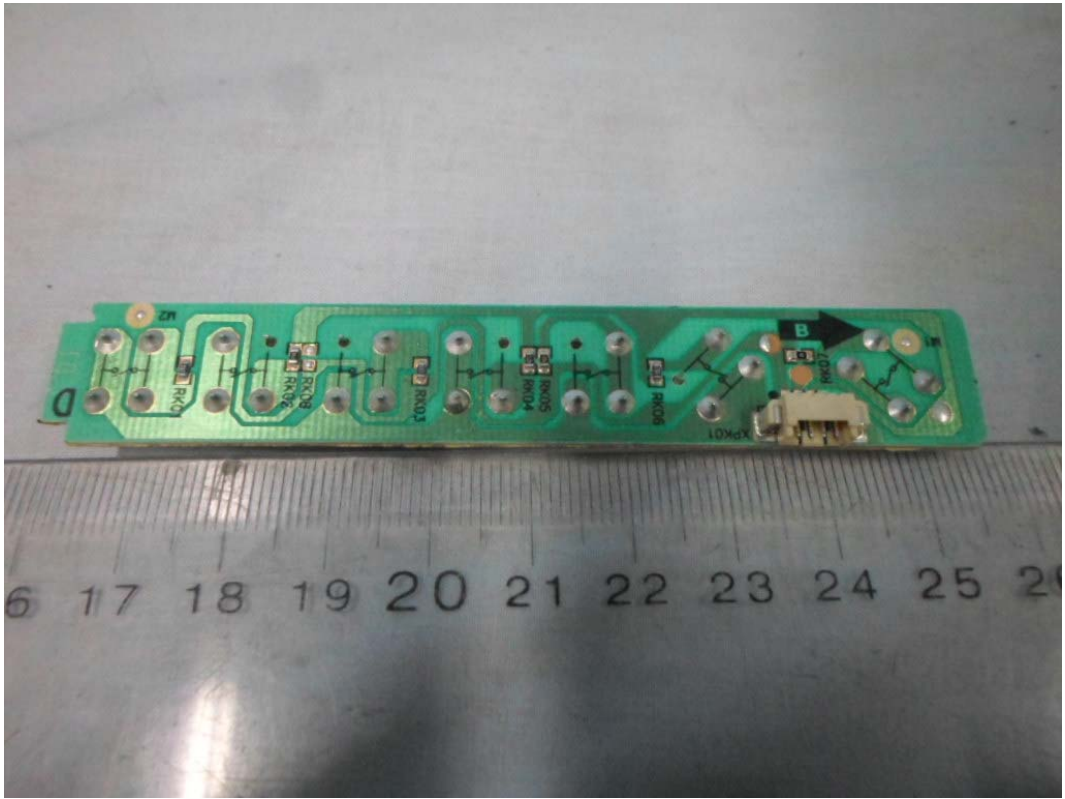


FIGURE 14
 LED LCD TV (M/N: 48H4)
 RF BOARD (COMPONENT SIDE)



