

FIGURE 1
LED LCD TV (M/N: 48K26DW)
COVER REMOVED

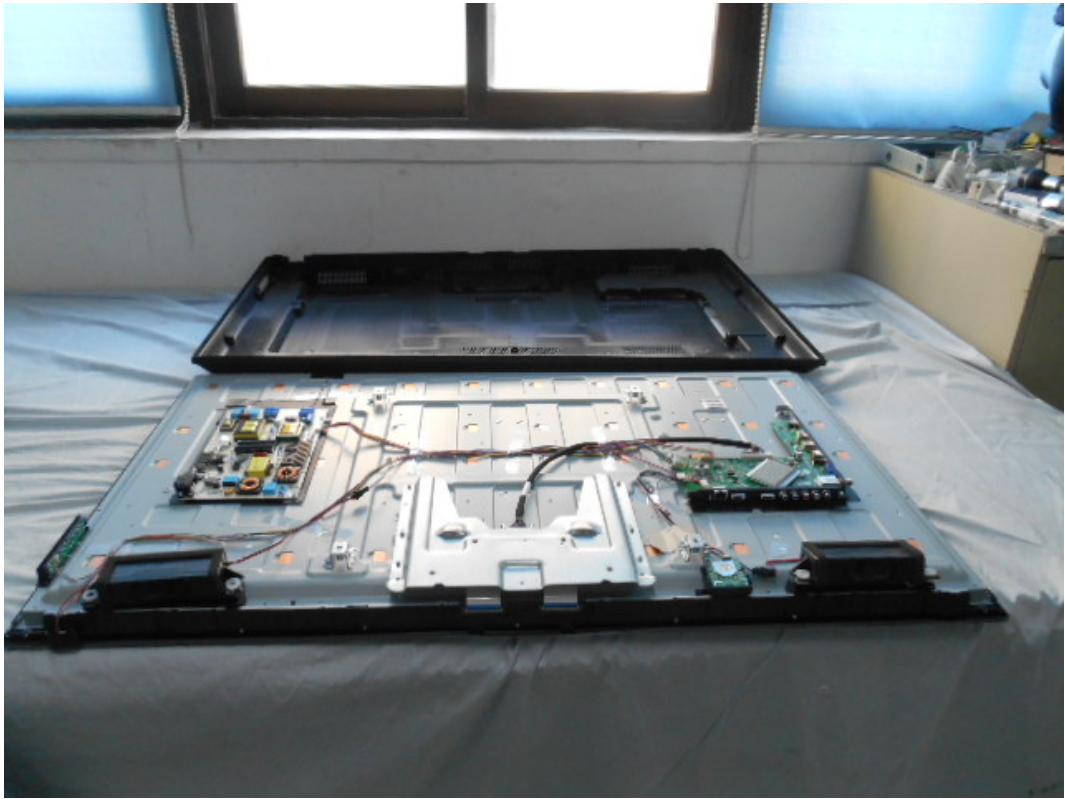
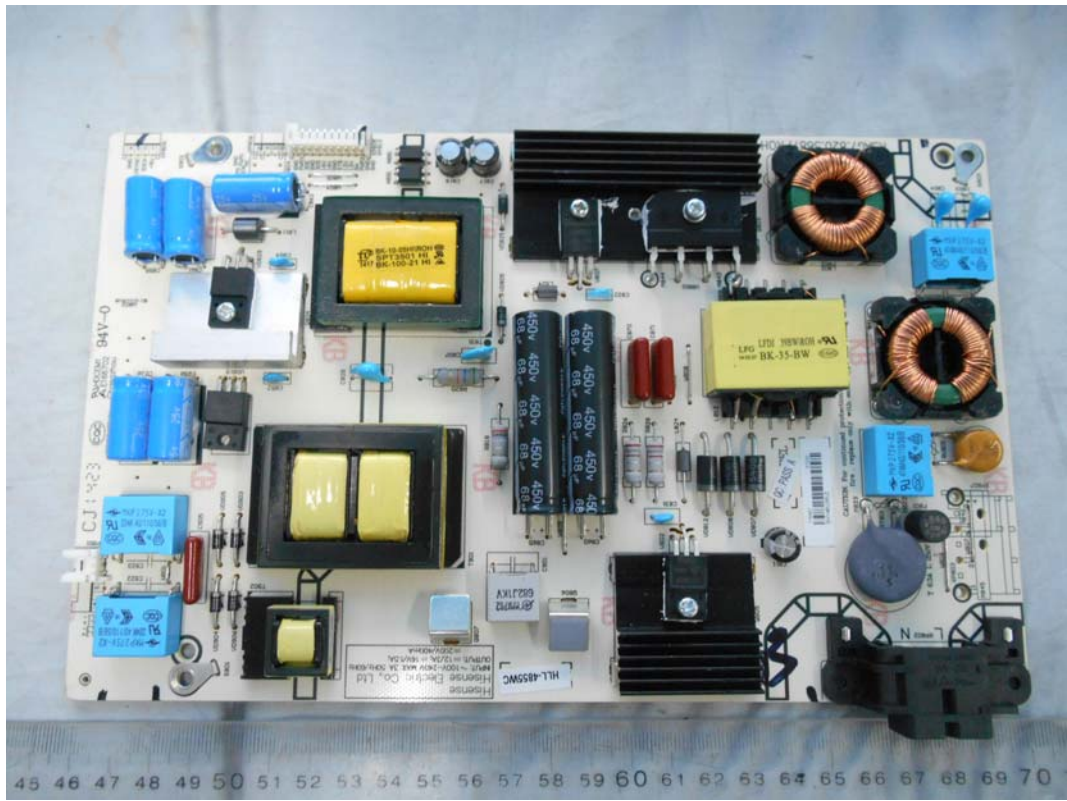


FIGURE 2
LED LCD TV (M/N: 48K26DW)
LCD PANEL LABEL



*FIGURE 3
LED LCD TV (M/N: 48K26DW)
POWER BOARD (COMPONENT SIDE)*



*FIGURE 4
LED LCD TV (M/N: 48K26DW)
POWER BOARD (SOLDERED SIDE)*

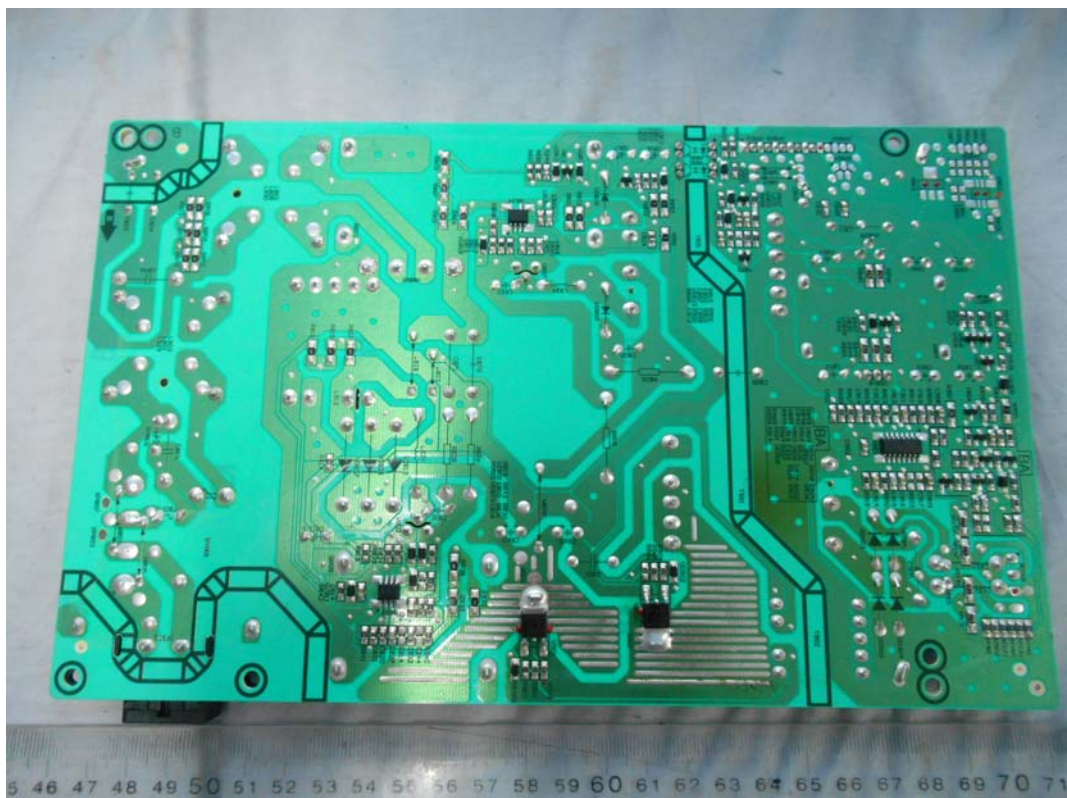


FIGURE 5
LED LCD TV (M/N: 48K26DW)
MAIN BOARD (COMPONENT SIDE)



FIGURE 6
LED LCD TV (M/N: 48K26DW)
MAIN BOARD (SOLDERED SIDE)

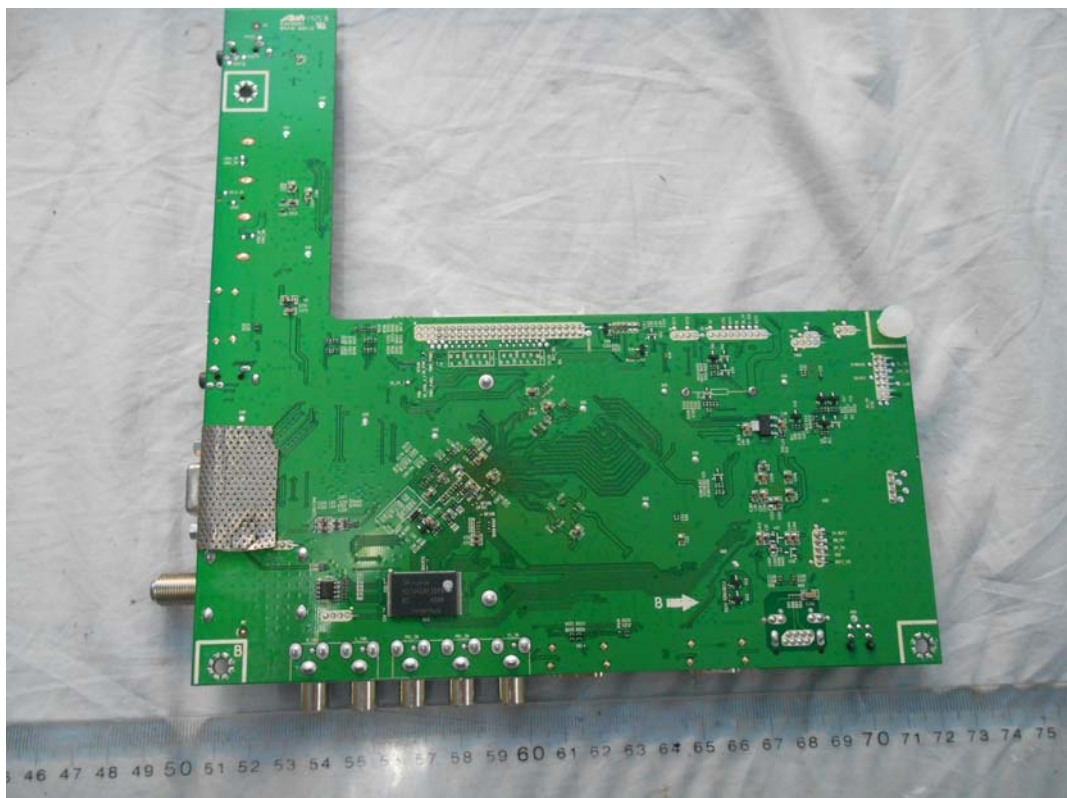


FIGURE 7
LED LCD TV (M/N: 48K26DW)
CRYSTAL ON MAIN BOARD



FIGURE 8
LED LCD TV (M/N: 48K26DW)
CHIP ON MAIN BOARD



FIGURE 9
LED LCD TV (M/N: 48K26DW)
TUNER ON MAIN BOARD

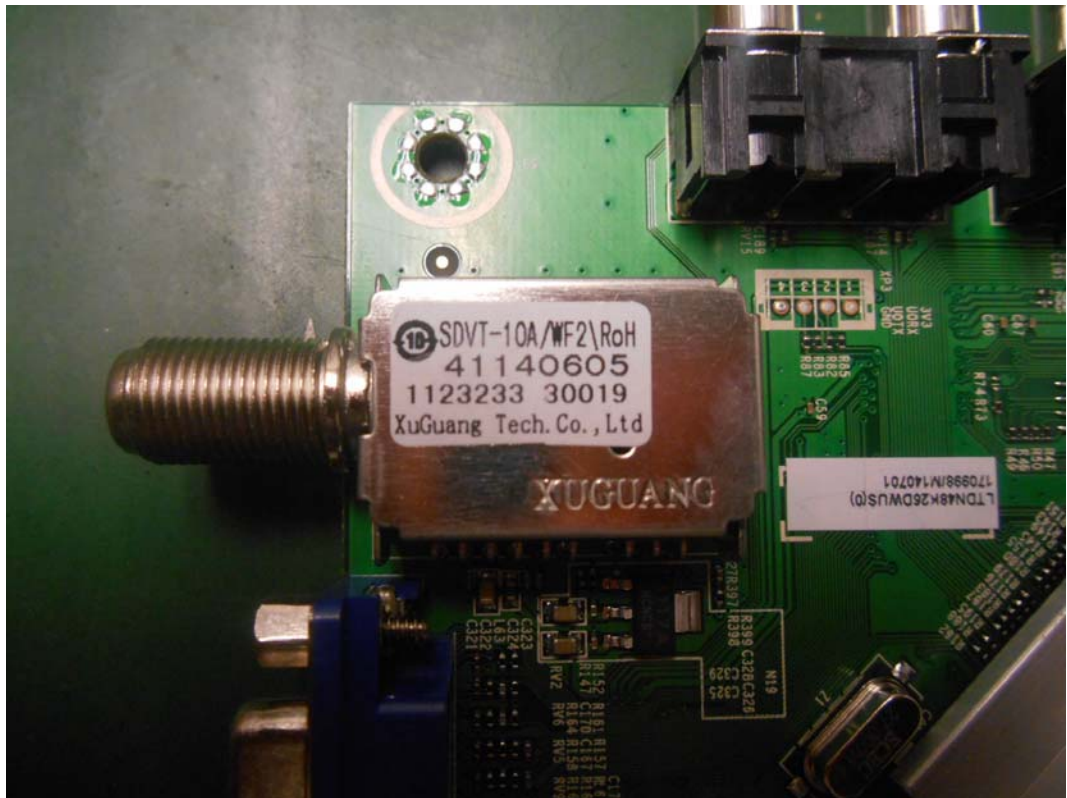


FIGURE 10
LED LCD TV (M/N: 48K26DW)
TUNER COVER REMOVED

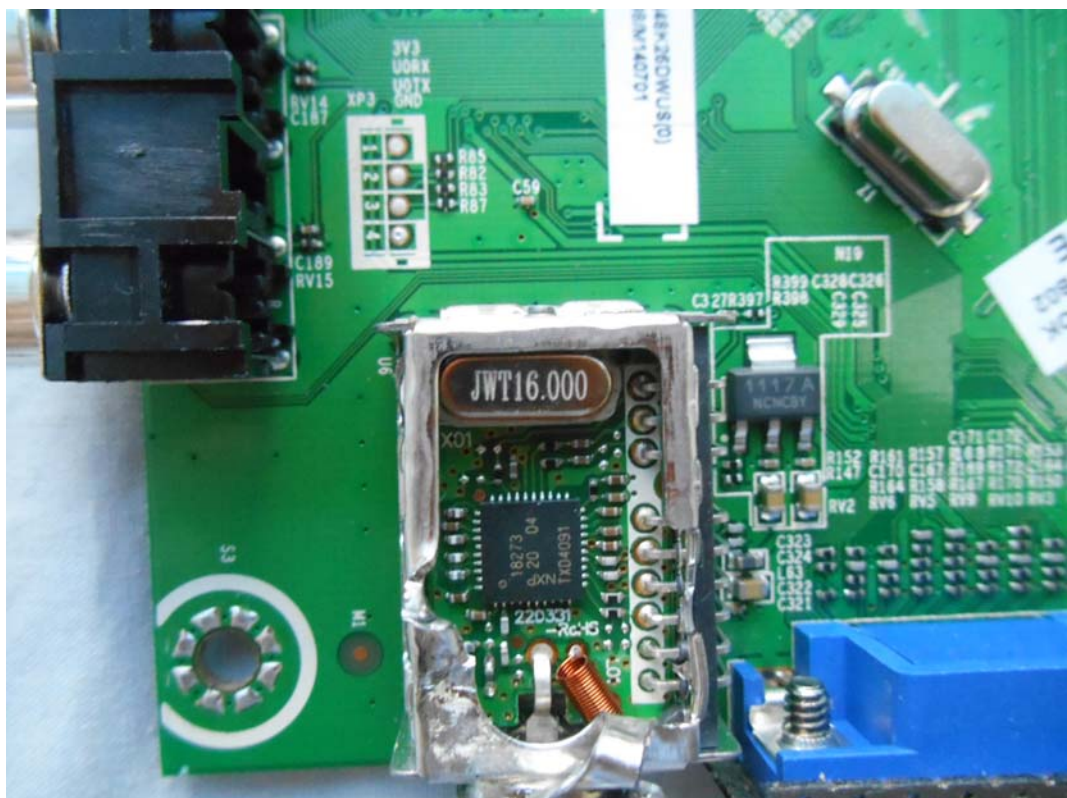


FIGURE 11
LED LCD TV (M/N: 48K26DW)
KEY BOARD (COMPONENT SIDE)

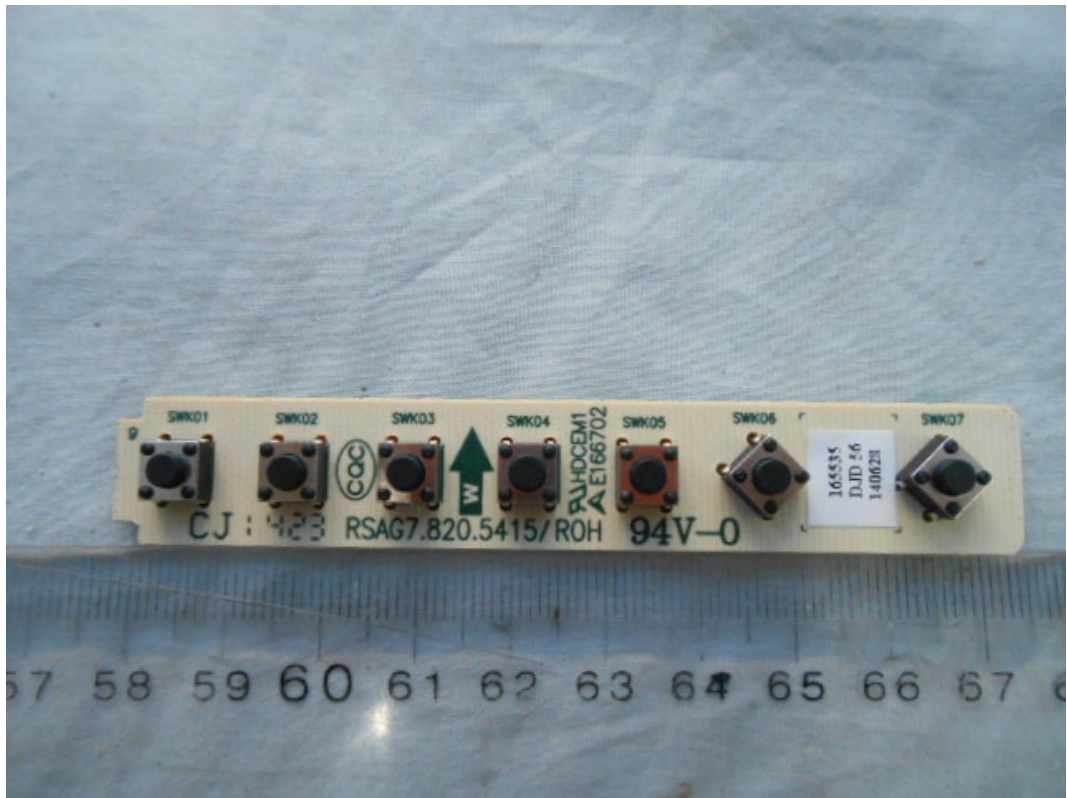


FIGURE 12
LED LCD TV (M/N: 48K26DW)
KEY BOARD (SOLDERED SIDE)

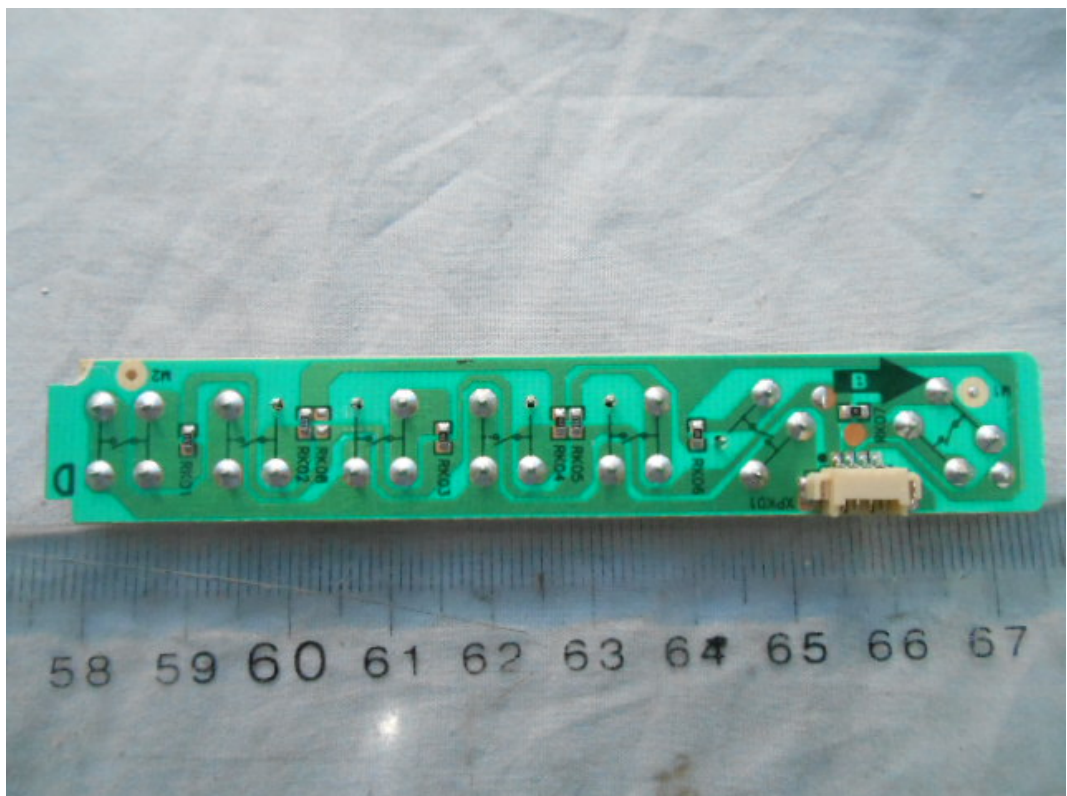


FIGURE 13
LED LCD TV (M/N: 48K26DW)
RF BOARD (COMPONENT SIDE)



FIGURE 14
LED LCD TV (M/N: 48K26DW)
RF BOARD (SOLDERED SIDE)

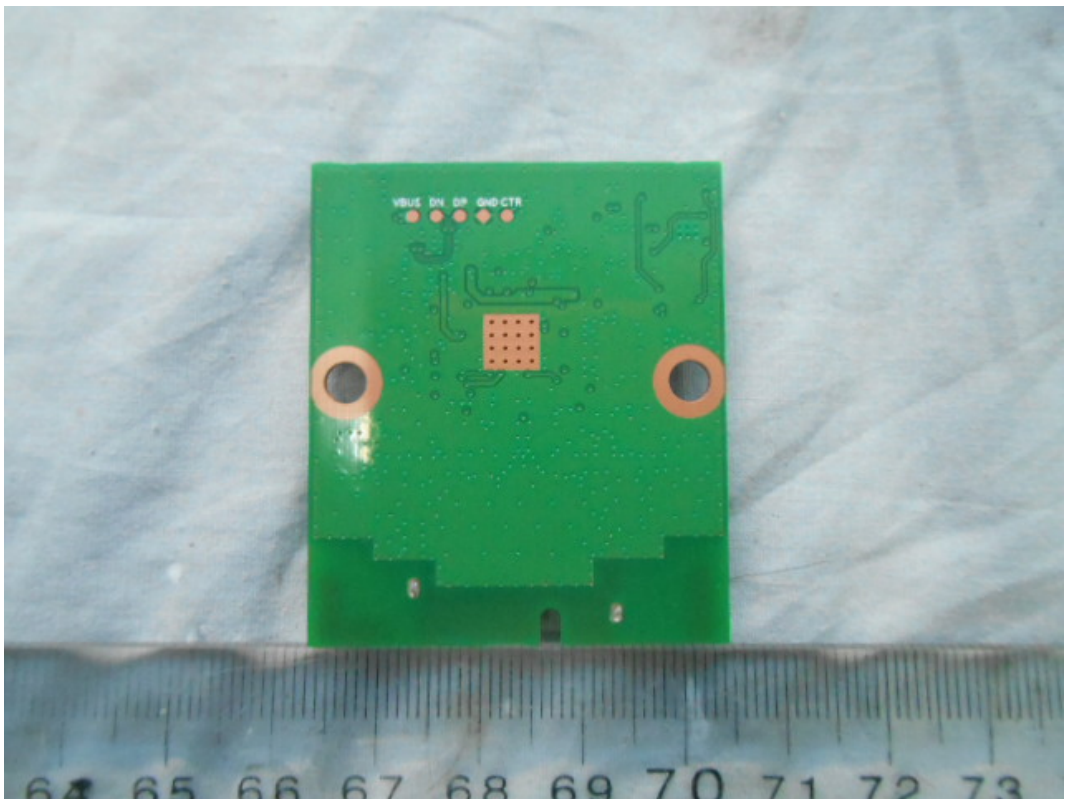


FIGURE 15
LED LCD TV (M/N: 48K26DW)
IR BOARD (COMPONENT SIDE)

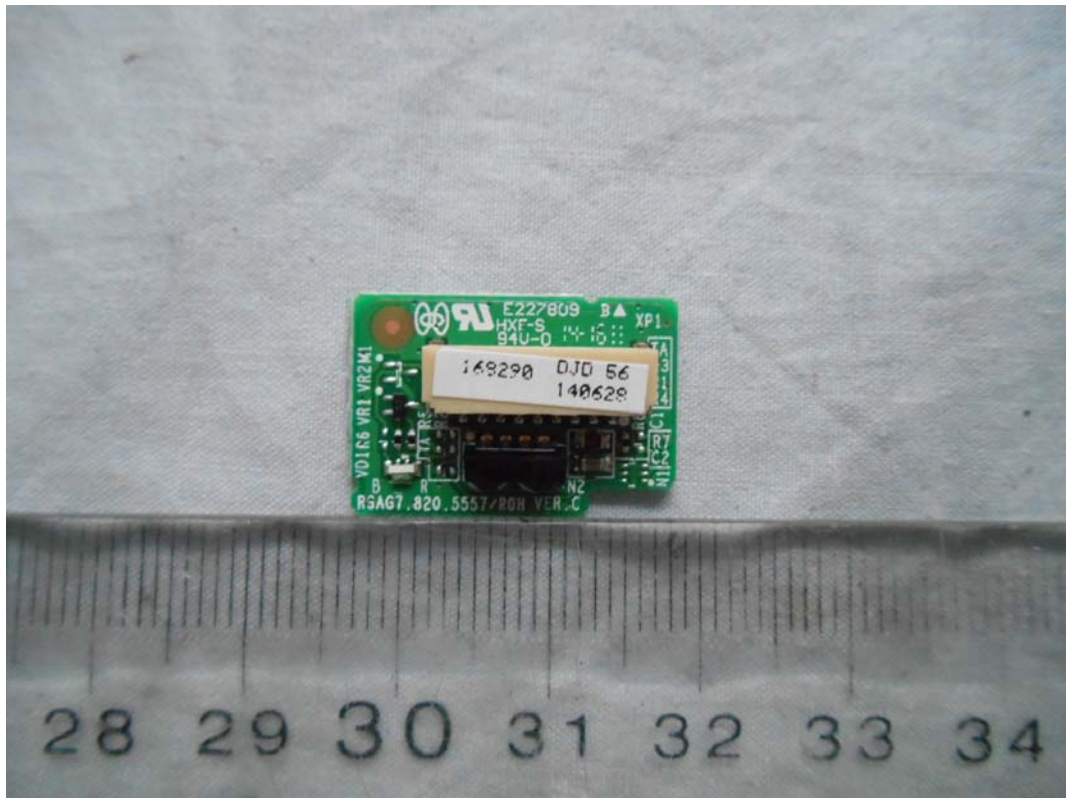


FIGURE 16
LED LCD TV (M/N: 48K26DW)
IR BOARD (SOLDERED SIDE)

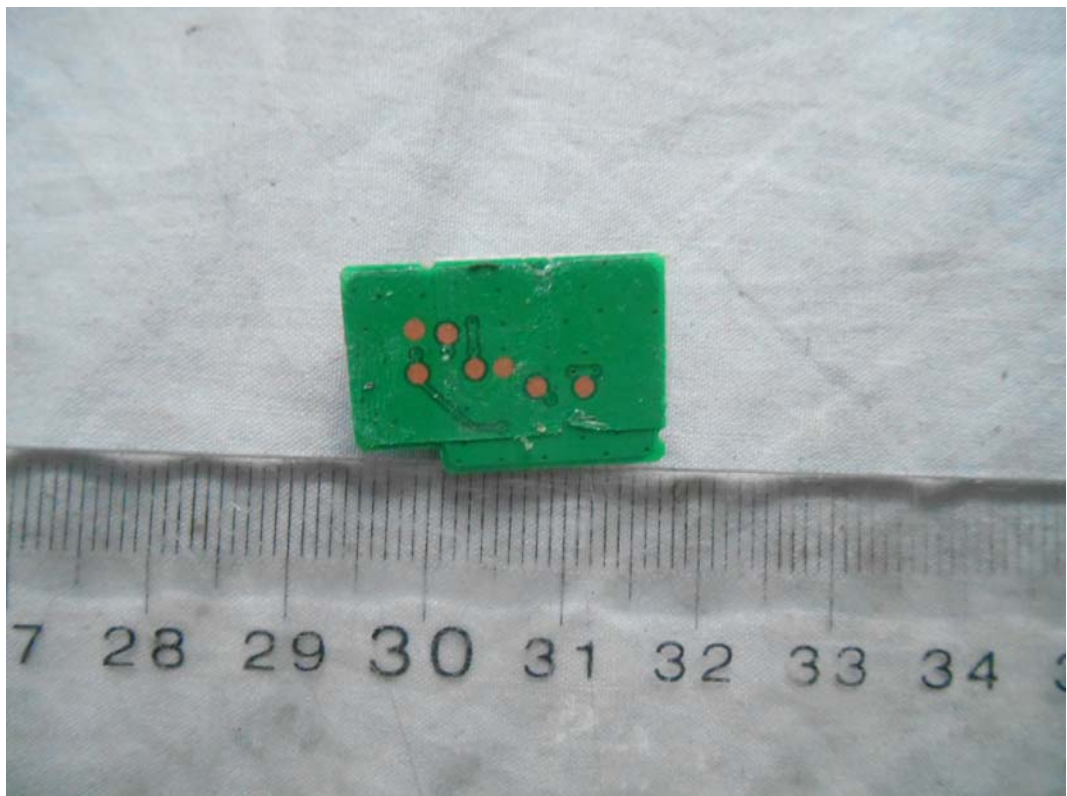


FIGURE 17
LED LCD TV (M/N: 48K26DW)
LCD PANEL CONTROL BOARD (COMPONENT SIDE)

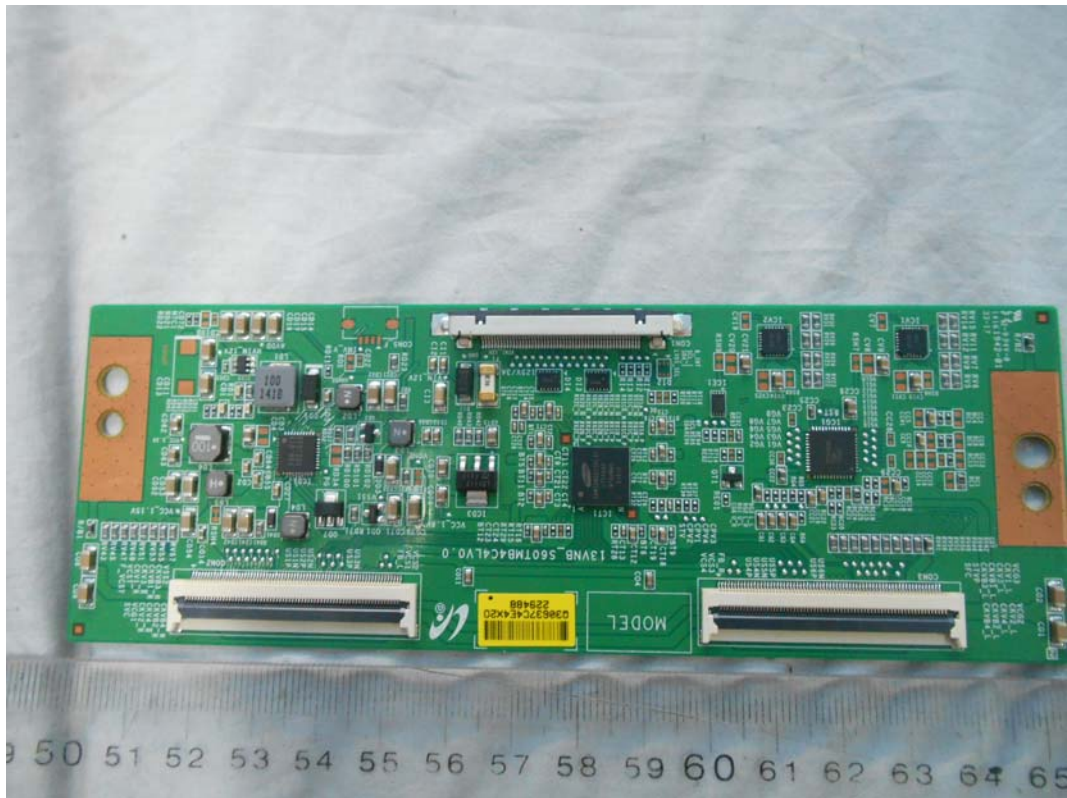


FIGURE 18
LED LCD TV (M/N: 48K26DW)
LCD PANEL CONTROL BOARD (SOLDERED SIDE)

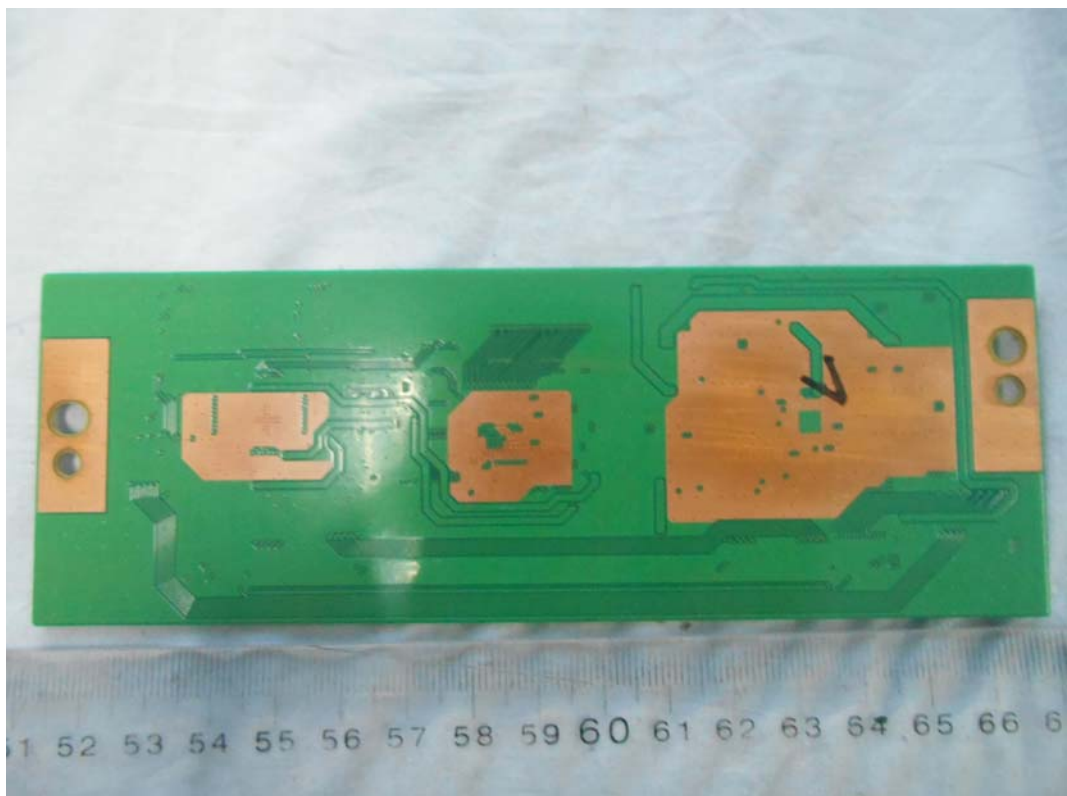


FIGURE 19
LED LCD TV (M/N: 48K26DW)
DEBUG #1

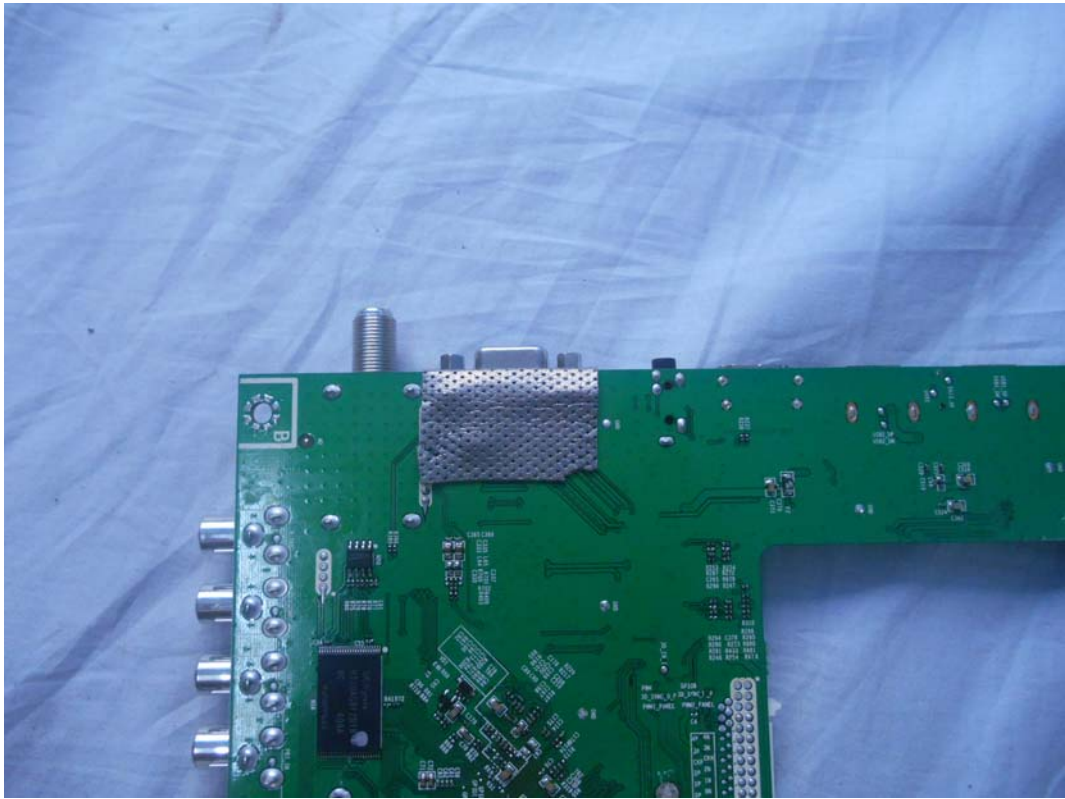


FIGURE 20
LED LCD TV (M/N: 48K26DW)
DEBUG #2

