

FIGURE 1
LED LCD TV (M/N: 40H4D)
COVER REMOVED



FIGURE 2
LED LCD TV (M/N: 40H4D)
LCD PANEL LABEL



FIGURE 3
LED LCD TV (M/N: 40H4D)
IR BOARD (COMPONENT SIDE)

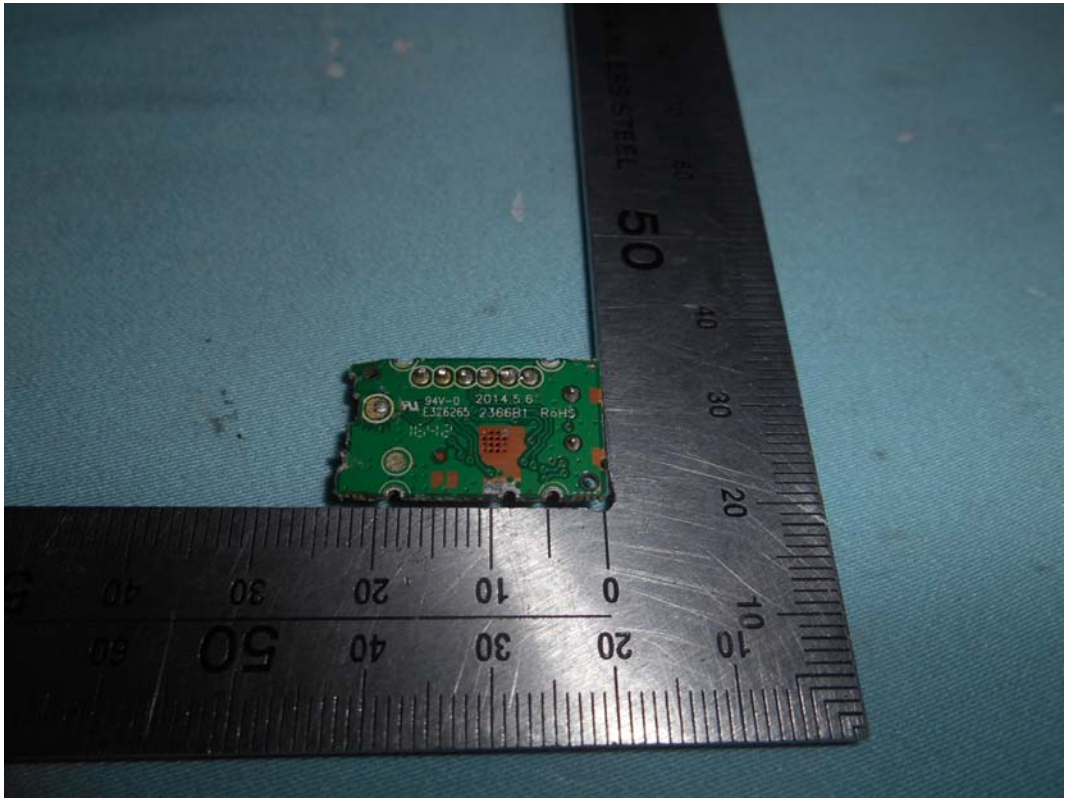


FIGURE 4
LED LCD TV (M/N: 40H4D)
IR BOARD (SOLDERED SIDE)

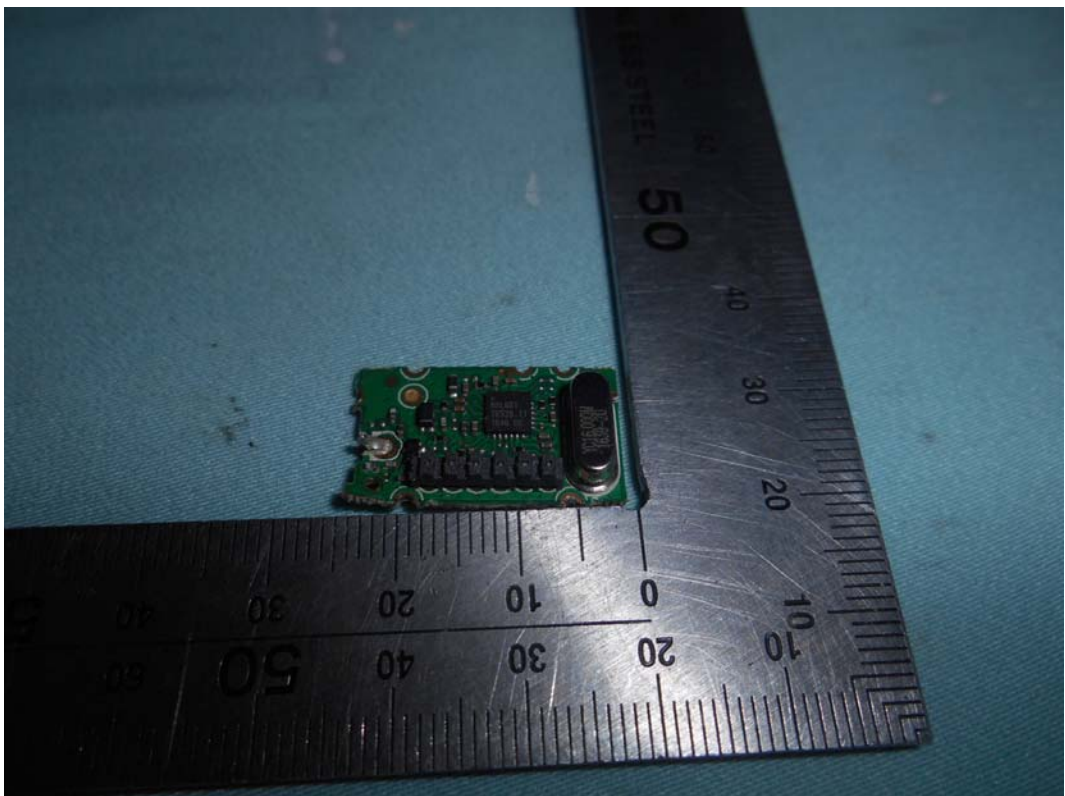


FIGURE 5
LED LCD TV (M/N: 40H4D)
MAIN BOARD (COMPONENT SIDE)



FIGURE 6
LED LCD TV (M/N: 40H4D)
MAIN BOARD (SOLDERED SIDE)

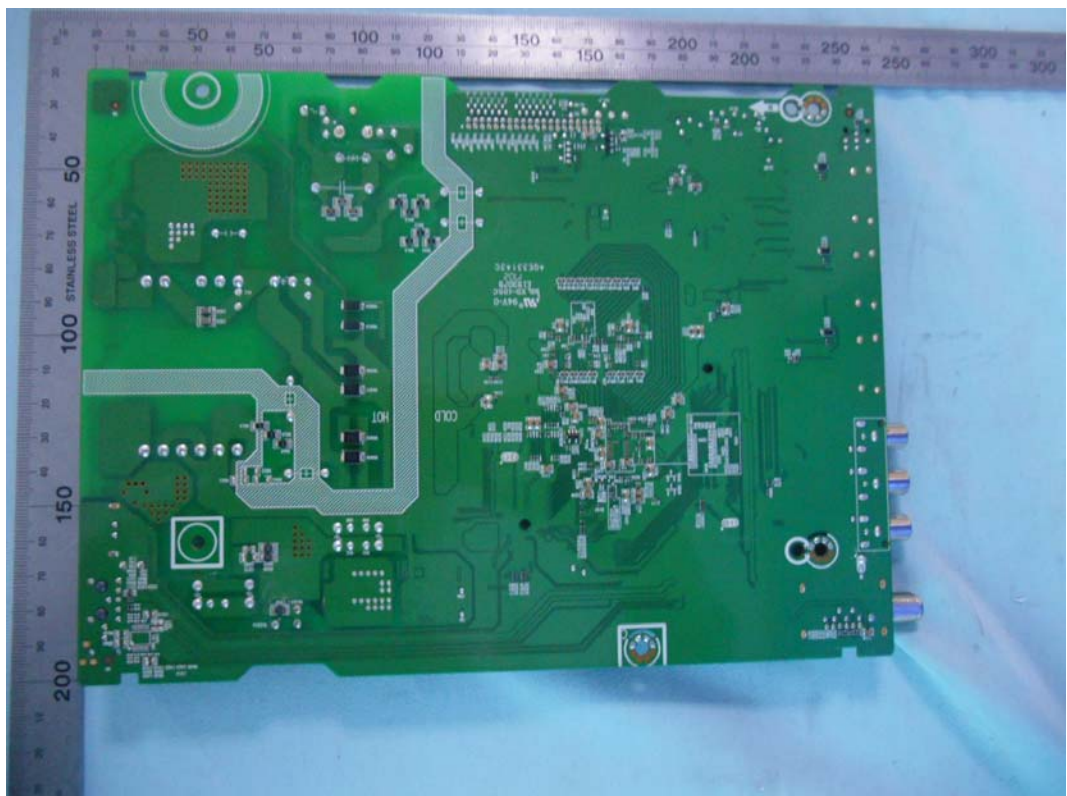


FIGURE 7
LED LCD TV (M/N: 40H4D)
CHIP AND CRYSTAL ON MAIN BOARD



FIGURE 8
LED LCD TV (M/N: 40H4D)
TUNER



LED LCD TV (M/N: 40H4D)
KEY BOARD (COMPONENT SIDE)

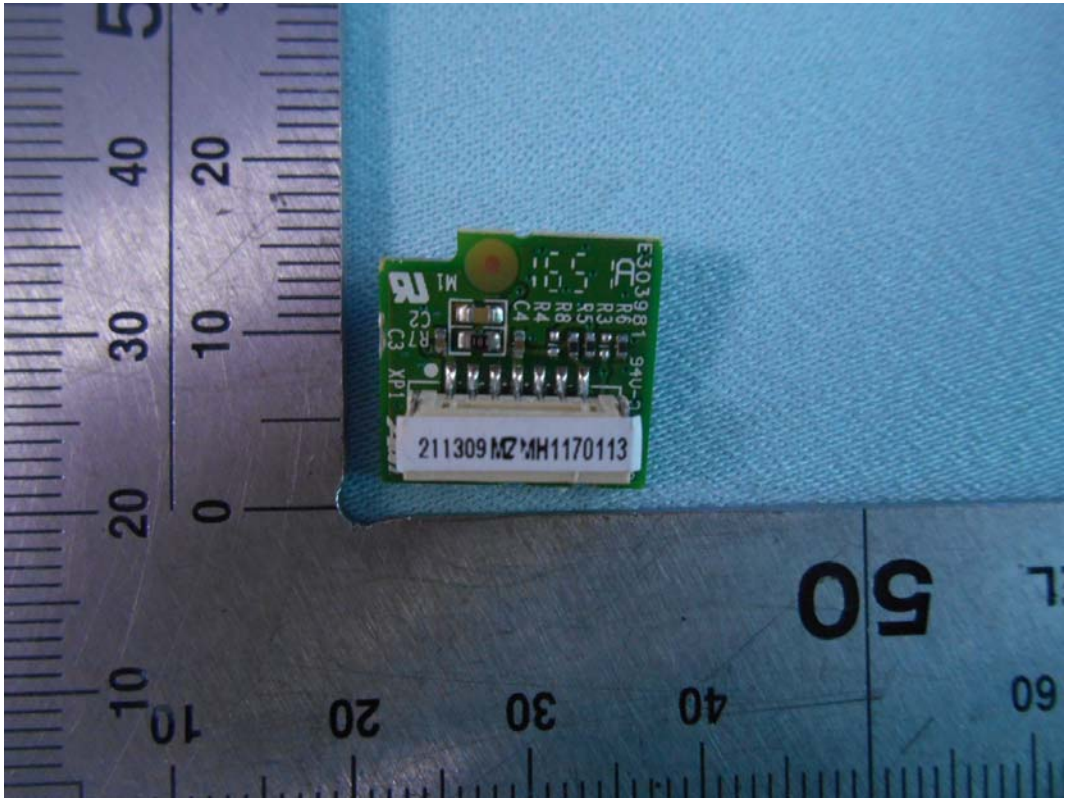


FIGURE 10
LED LCD TV (M/N: 40H4D)
KEY BOARD (SOLDERED SIDE)

