

*FIGURE 1*  
*LED LCD TV (M/N: 40H5C)*  
*COVER REMOVED*



*FIGURE 2*  
*LED LCD TV (M/N: 40H5C)*  
*LCD PANEL LABEL*



*FIGURE 3  
LED LCD TV (M/N: 40H5C)  
MAIN BOARD (COMPONENT SIDE)*



*FIGURE 4  
LED LCD TV (M/N: 40H5C)  
MAIN BOARD (SOLDERED SIDE)*



*FIGURE 5  
LED LCD TV (M/N: 40H5C)  
CHIP AND CRYSTAL ON MAIN BOARD*



*FIGURE 6  
LED LCD TV (M/N: 40H5C)  
IR BOARD (COMPONENT SIDE)*

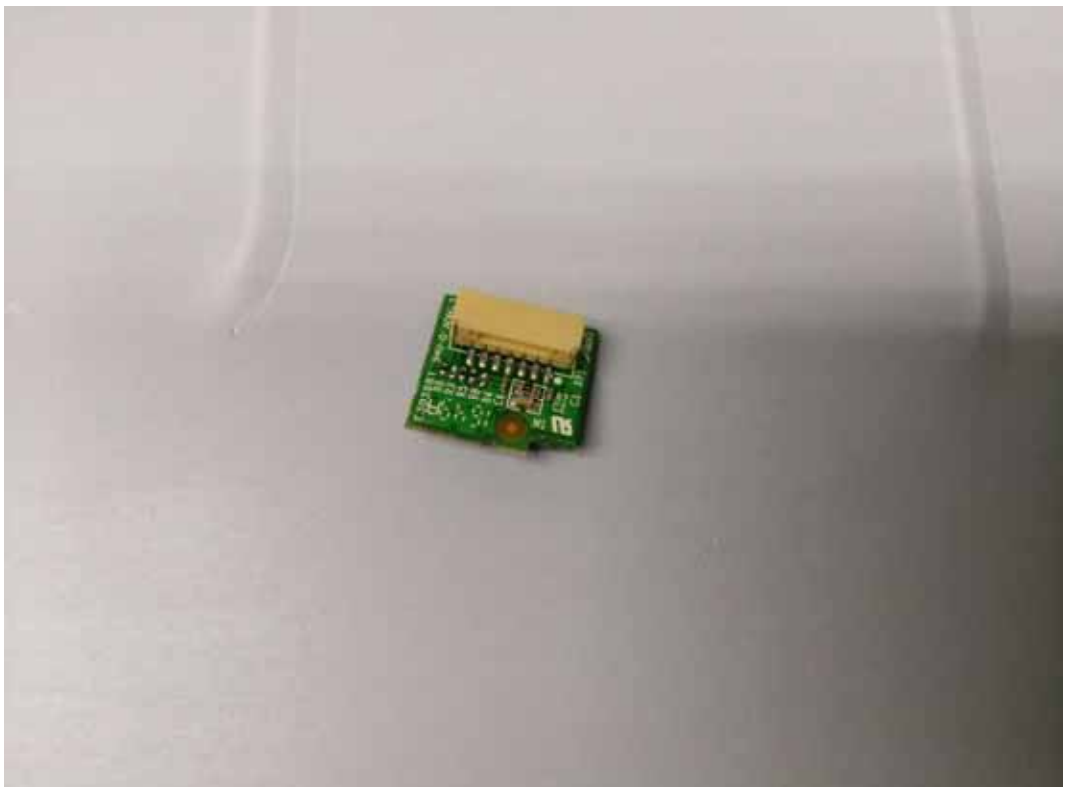




FIGURE 7  
LED LCD TV (M/N: 40H5C)  
IR BOARD (SOLDERED SIDE)



FIGURE 8  
LED LCD TV (M/N: 40H5C)  
KEY BOARD (COMPONENT SIDE)

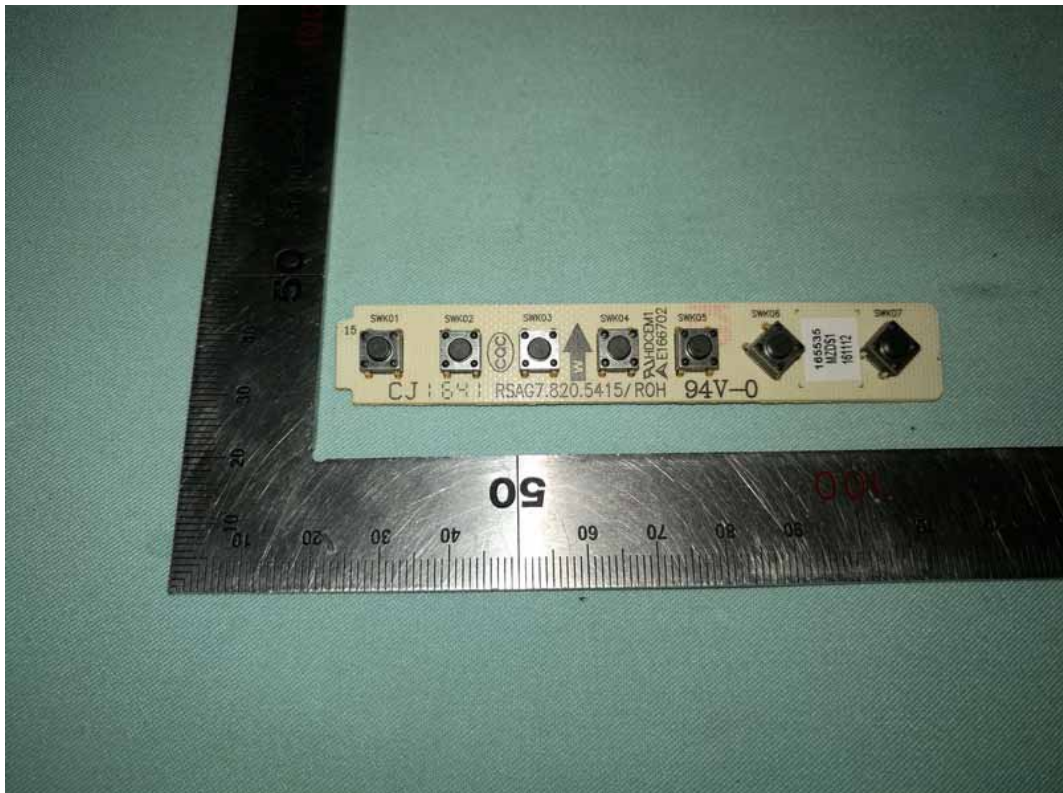


FIGURE 9  
LED LCD TV (M/N: 40H5C)  
KEY BOARD (SOLDERED SIDE)

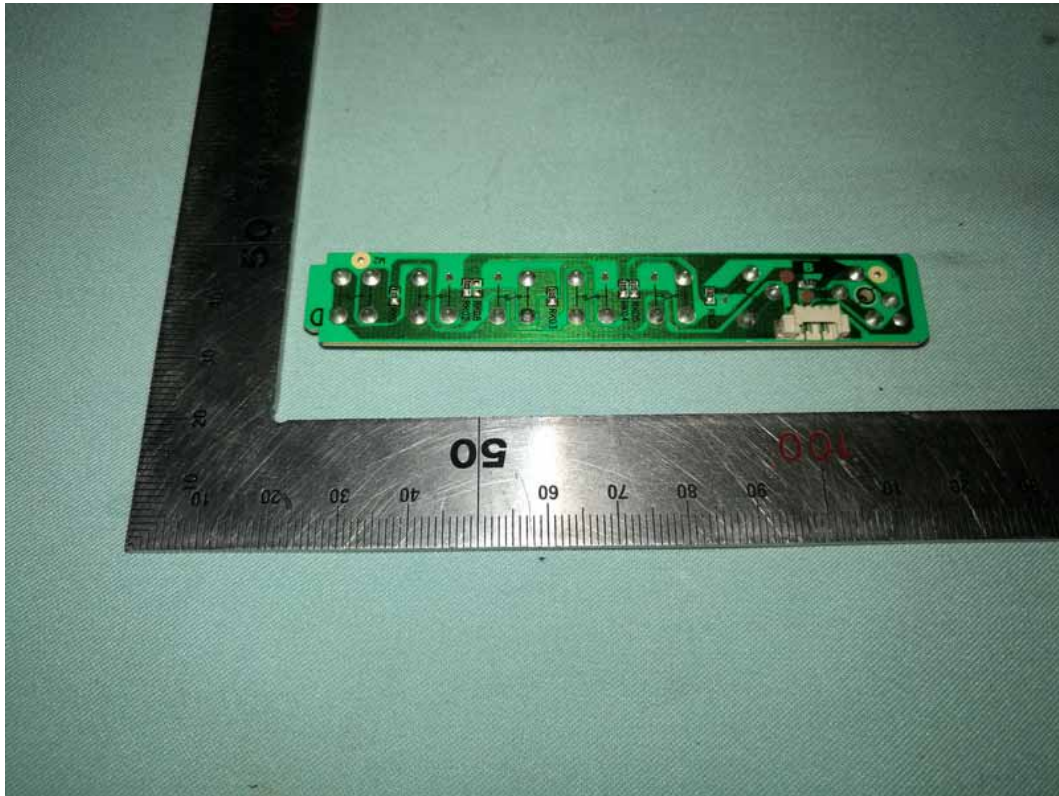


FIGURE 10  
LED LCD TV (M/N: 40H5C)  
RF BOARD (COMPONENT SIDE)





FIGURE 11  
LED LCD TV (M/N: 40H5C)  
RF BOARD (SOLDERED SIDE)

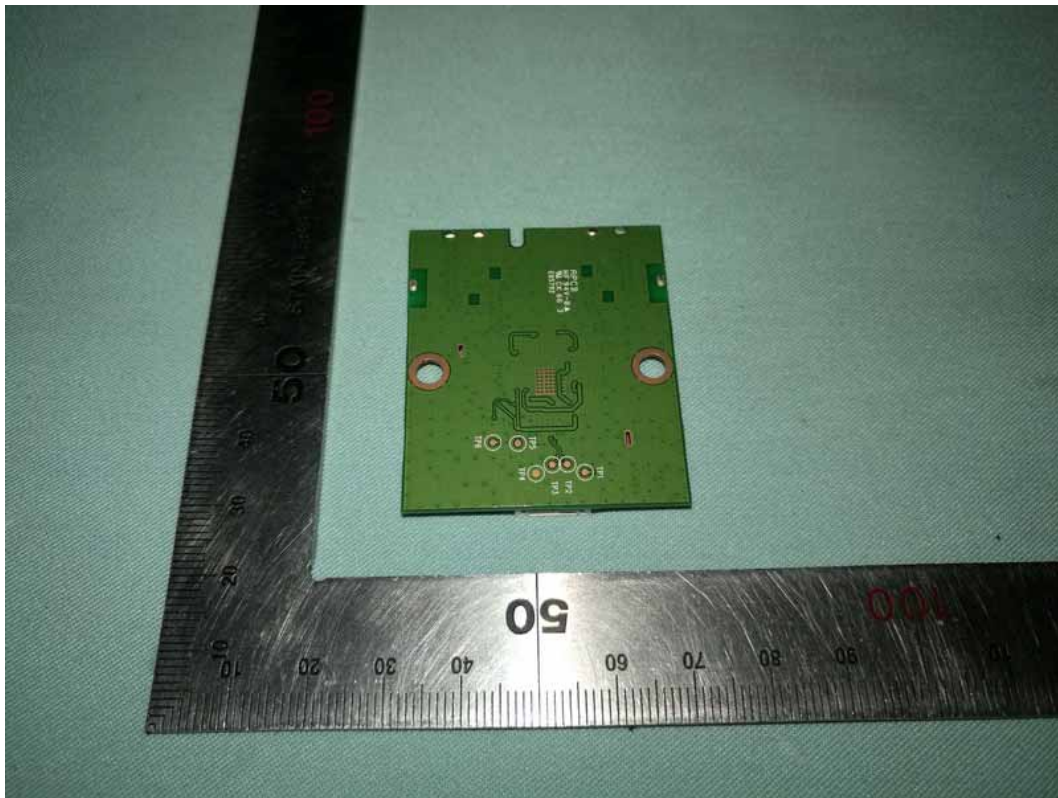


FIGURE 12  
LED LCD TV (M/N: 40H5C)  
CHIP AND CRYSTAL ON RF BOARD



FIGURE 13  
LED LCD TV (M/N: 40H5C)  
DEBUG

