

*FIGURE 1*  
*LED LCD TV (M/N: 43H6D)*  
*COVER REMOVED*



*FIGURE 2*  
*LED LCD TV (M/N: 43H6D)*  
*MAIN BOARD (COMPONENT SIDE)*



*FIGURE 3*  
*LED LCD TV (M/N: 43H6D)*  
*MAIN BOARD (SOLDERED SIDE)*

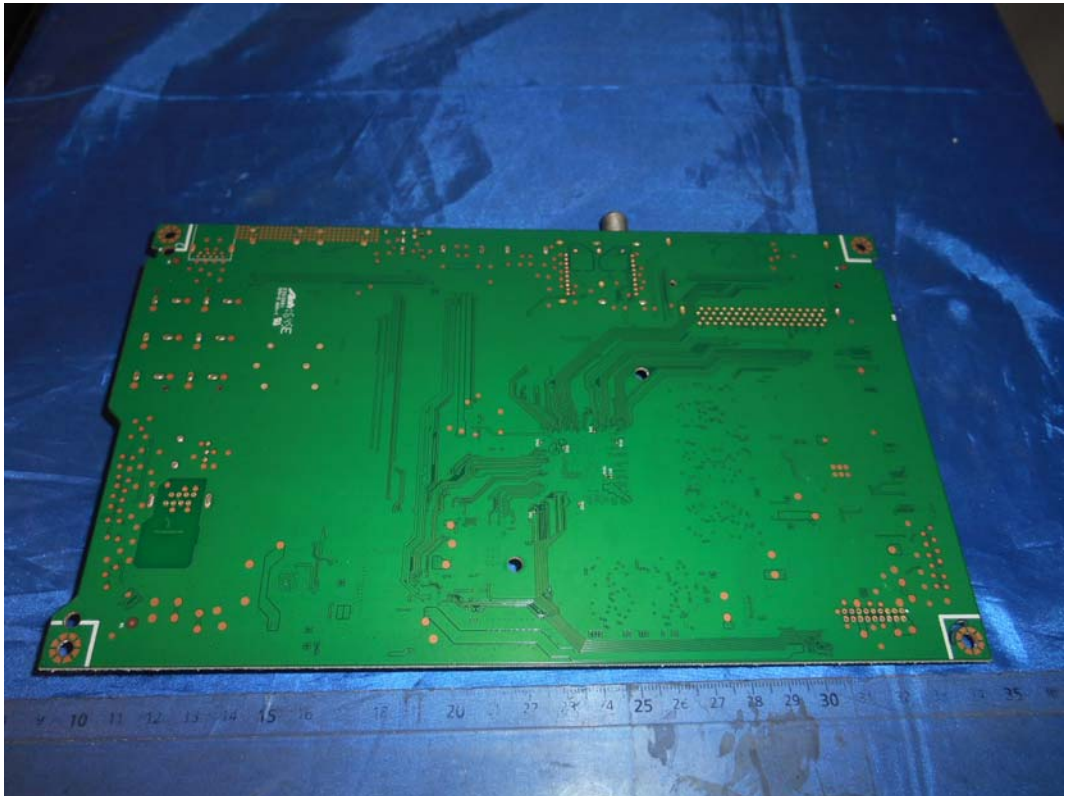
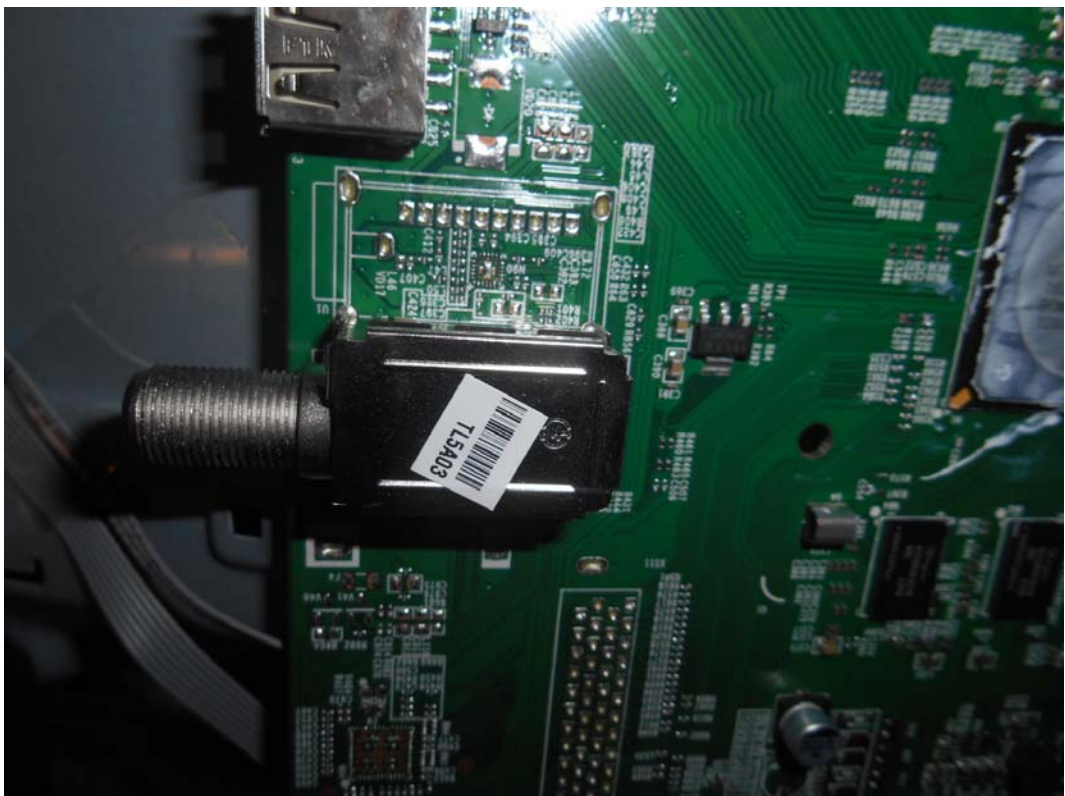




FIGURE 4  
LED LCD TV (M/N: 43H6D)  
CHIP AND CRYSTAL ON MAIN BOARD



FIGURE 5  
LED LCD TV (M/N: 43H6D)  
TUNER



*FIGURE 6  
LED LCD TV (M/N: 43H6D)  
PANEL MAIN BOARD (COMPONENT SIDE)*



*FIGURE 7  
LED LCD TV (M/N: 43H6D)  
PANEL MAIN BOARD (SOLDERED SIDE)*

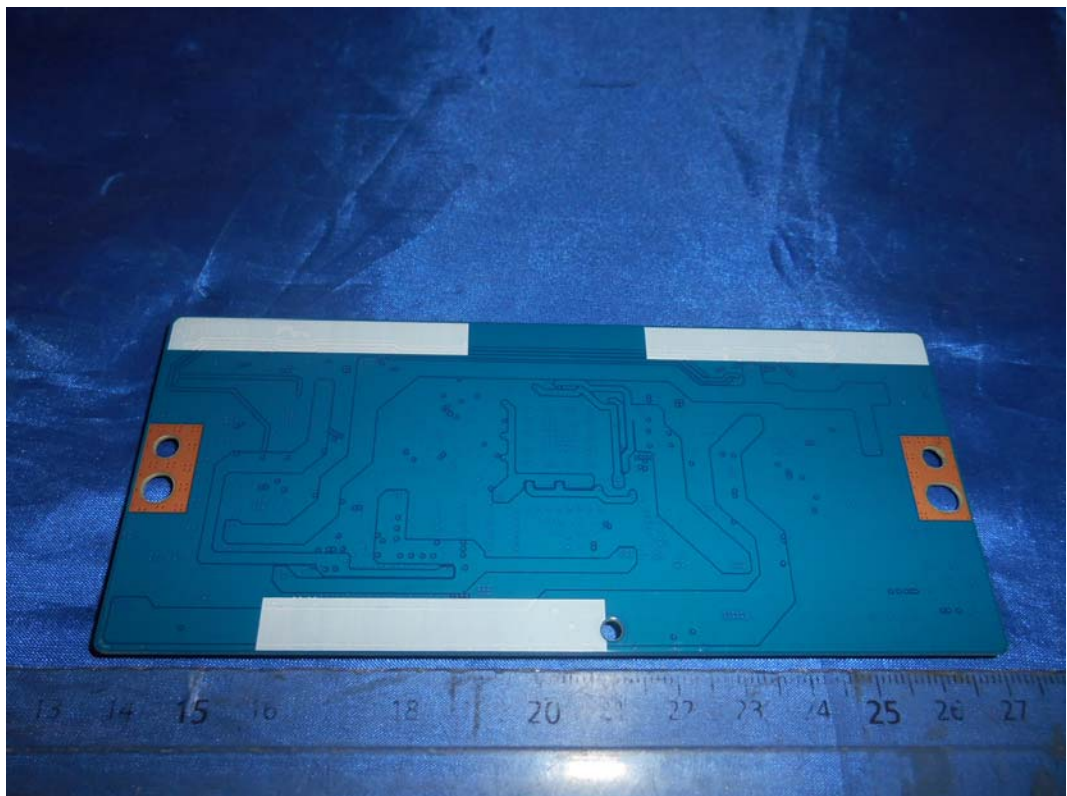




FIGURE 8  
LED LCD TV (M/N: 43H6D)  
CHIP AND CRYSTAL ON PANEL MAIN BOARD

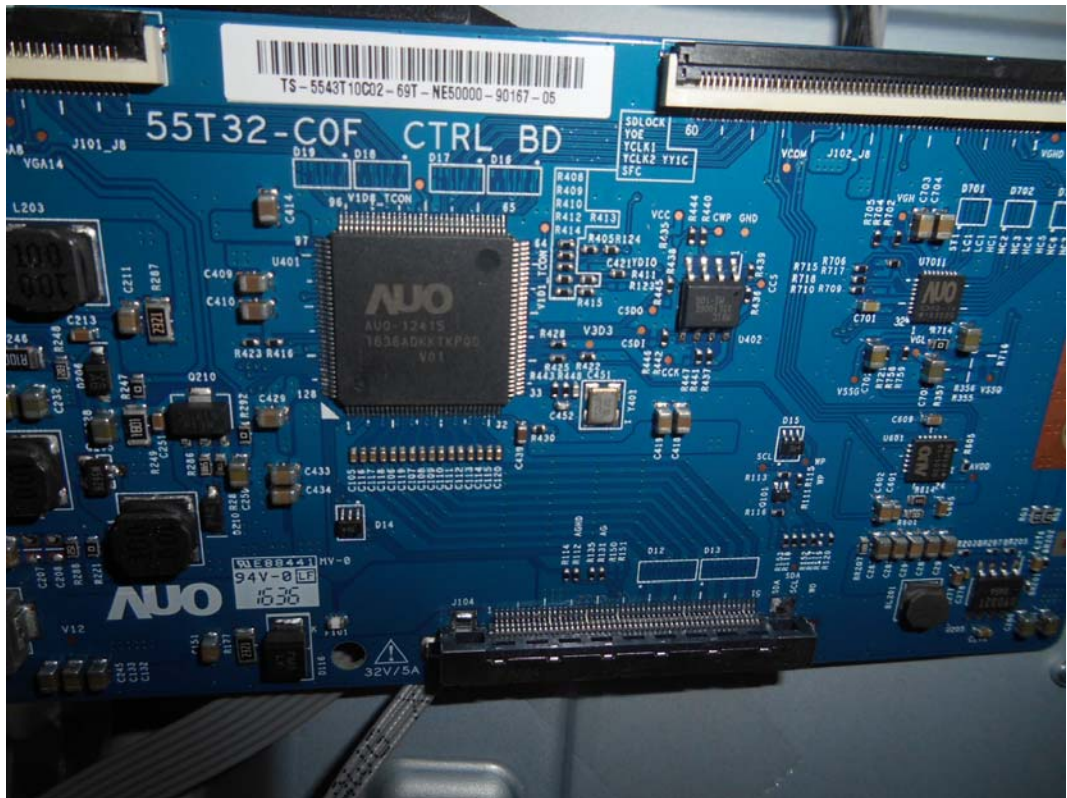


FIGURE 9  
LED LCD TV (M/N: 43H6D)  
RF BOARD (COMPONENT SIDE)



FIGURE 10  
LED LCD TV (M/N: 43H6D)  
RF BOARD (SOLDERED SIDE)

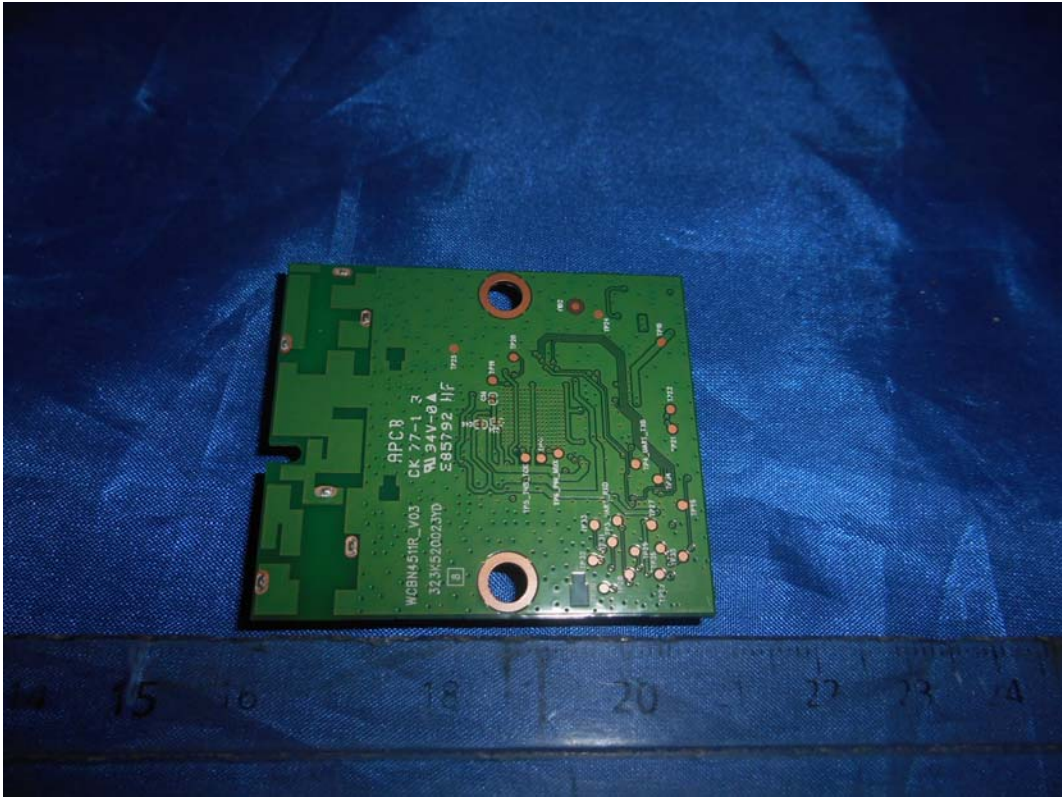




FIGURE 11  
LED LCD TV (M/N: 43H6D)  
RF BOARD LABEL



FIGURE 12  
LED LCD TV (M/N: 43H6D)  
CHIP AND CRYSTAL ON RF BOARD



FIGURE 13  
LED LCD TV (M/N: 43H6D)  
KEY BOARD (COMPONENT SIDE)

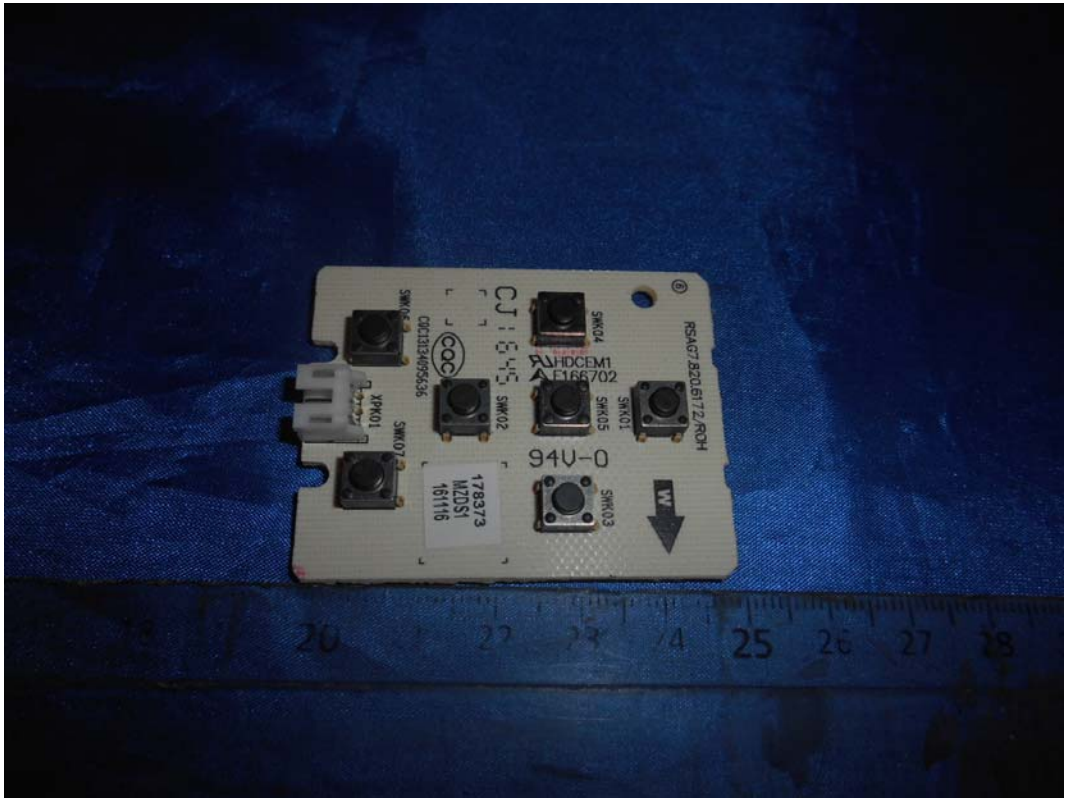
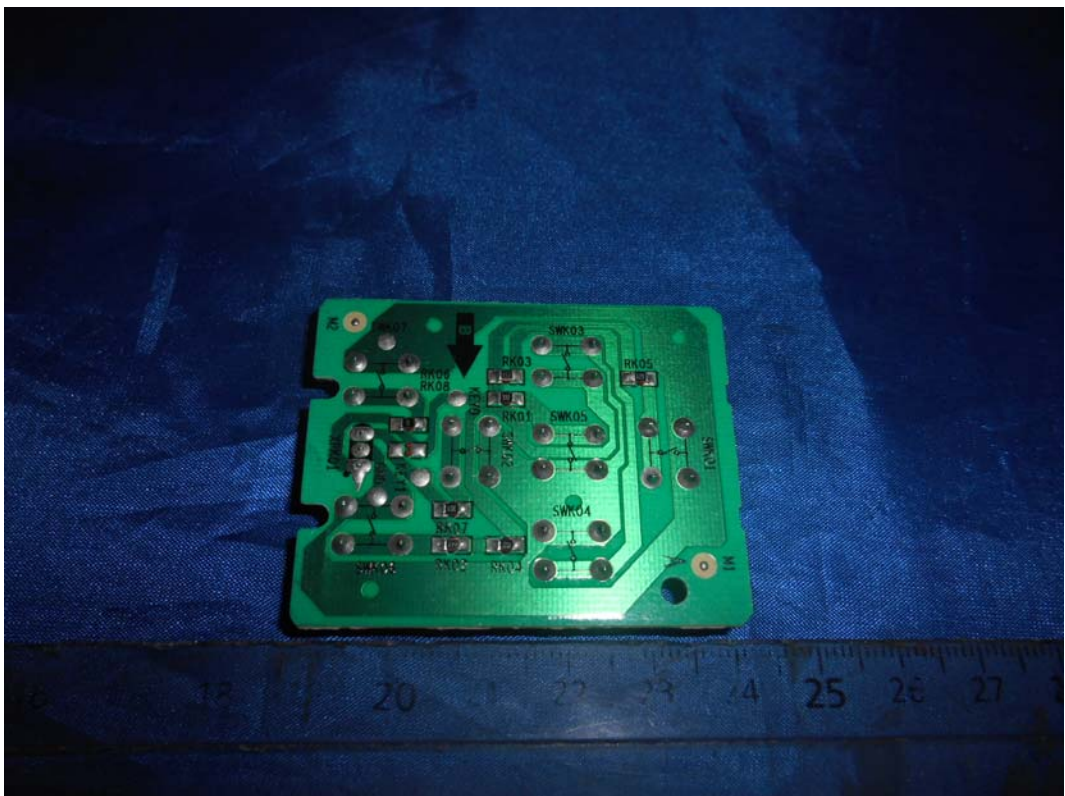
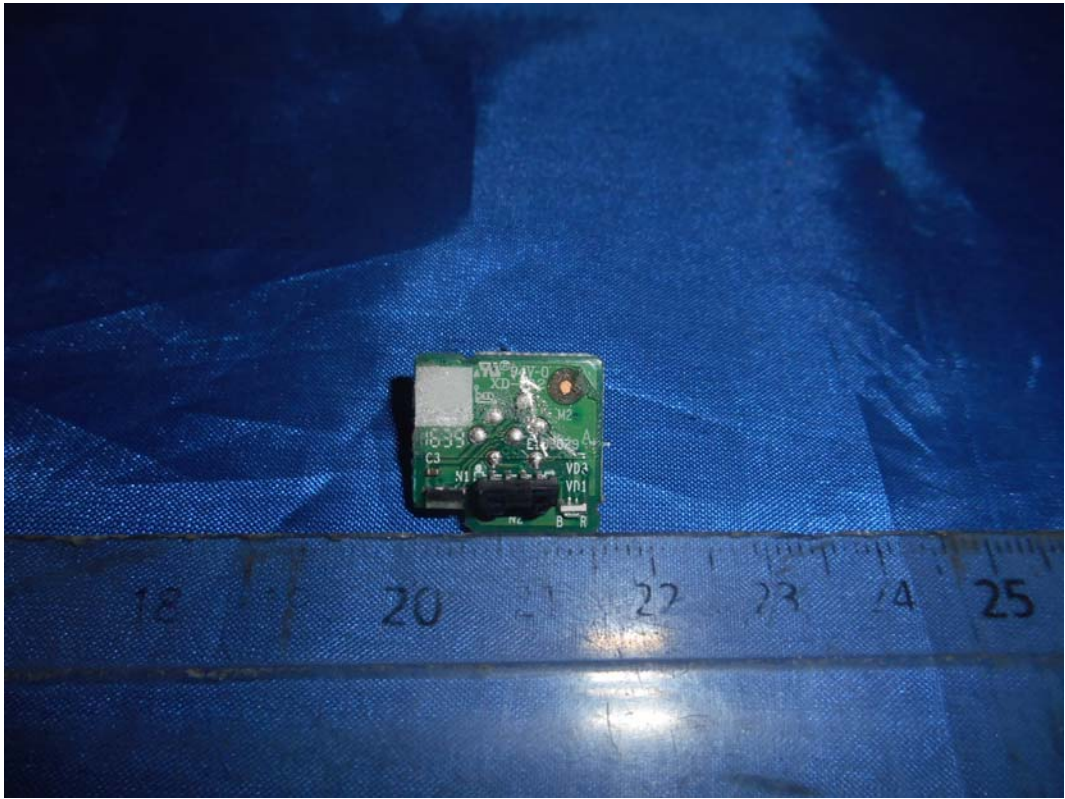


FIGURE 14  
LED LCD TV (M/N: 43H6D)  
KEY BOARD (SOLDERED SIDE)





*FIGURE 15*  
*LED LCD TV (M/N: 43H6D)*  
*IR BOARD (COMPONENT SIDE)*



*FIGURE 16*  
*LED LCD TV (M/N: 43H6D)*  
*IR BOARD (SOLDERED SIDE)*

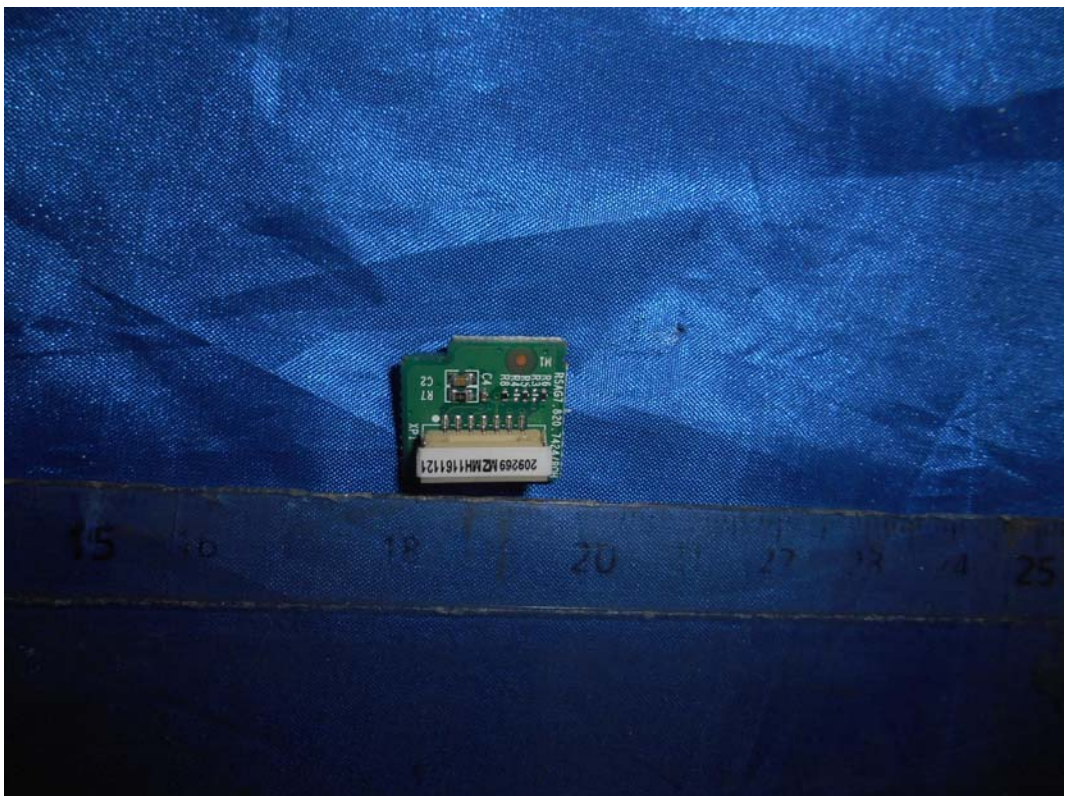


FIGURE 17  
LED LCD TV (M/N: 43H6D)  
POWER BOARD (COMPONENT SIDE)

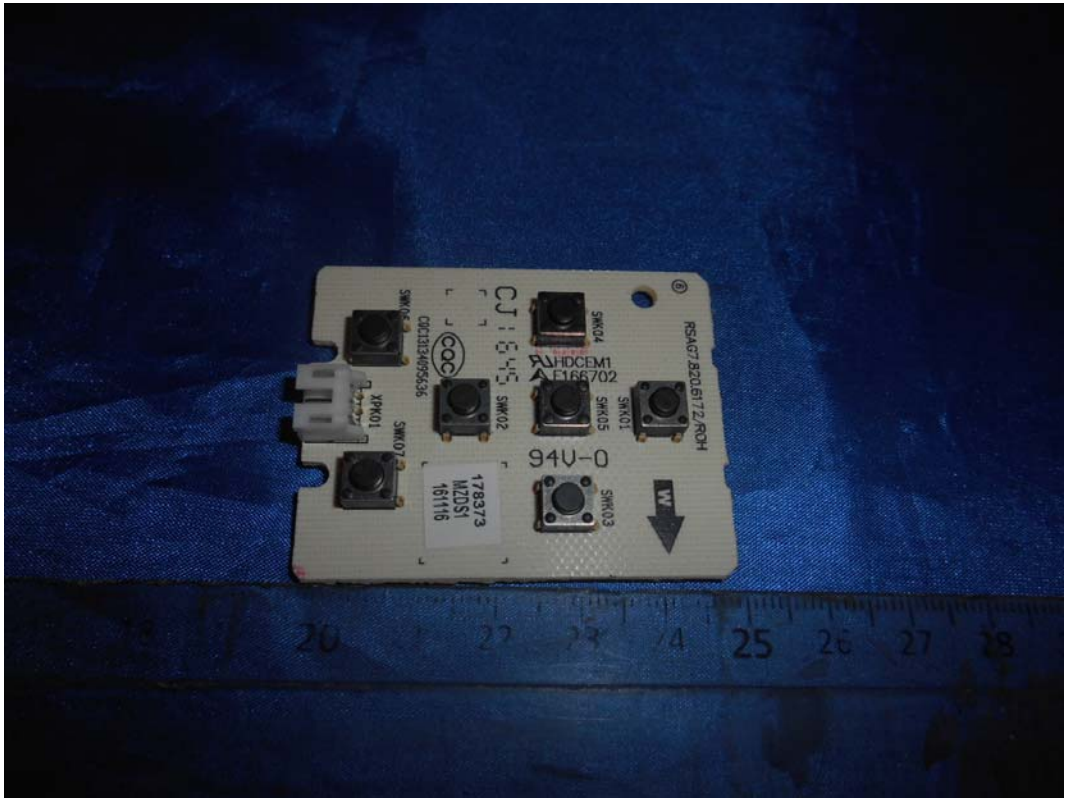


FIGURE 18  
LED LCD TV (M/N: 43H6D)  
POWER BOARD (SOLDERED SIDE)

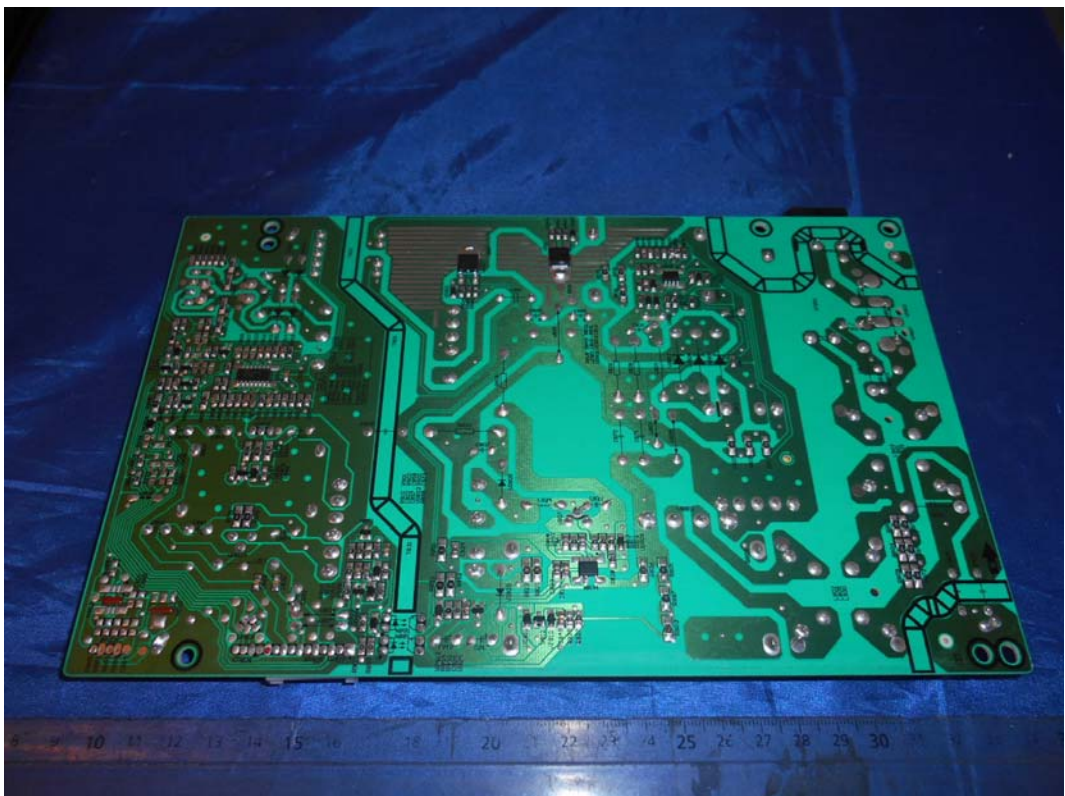




FIGURE 19  
LED LCD TV (M/N: 43H6D)  
DEBUG

