

FIGURE 1
LED LCD TV (M/N: 40H5B)
COVER REMOVED



*FIGURE 2
LED LCD TV (M/N: 40H5B)
MAIN BOARD (COMPONENT SIDE)*



*FIGURE 3
LED LCD TV (M/N: 40H5B)
MAIN BOARD (SOLDERED SIDE)*

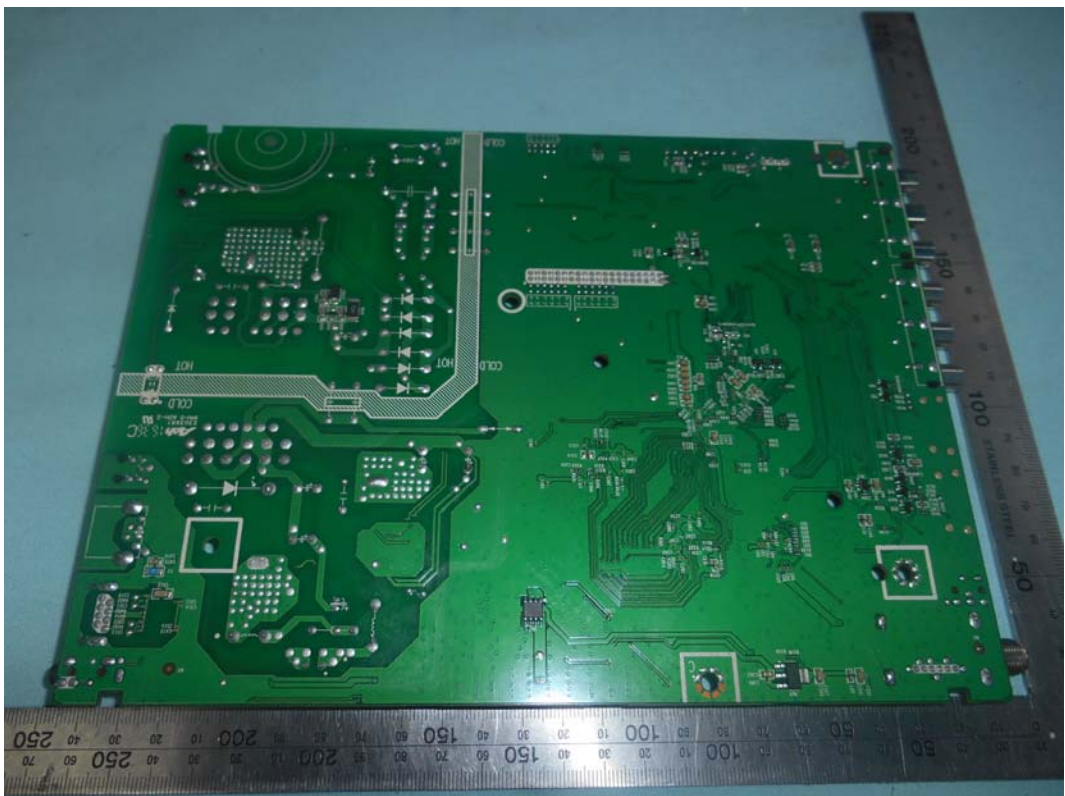


FIGURE 4
LED LCD TV (M/N: 40H5B)
CHIP AND CRYSTAL ON MAIN BOARD



FIGURE 5
LED LCD TV (M/N: 40H5B)
TUNER



FIGURE 6
LED LCD TV (M/N: 40H5B)
TUNER BOARD (COMPONENT SIDE)

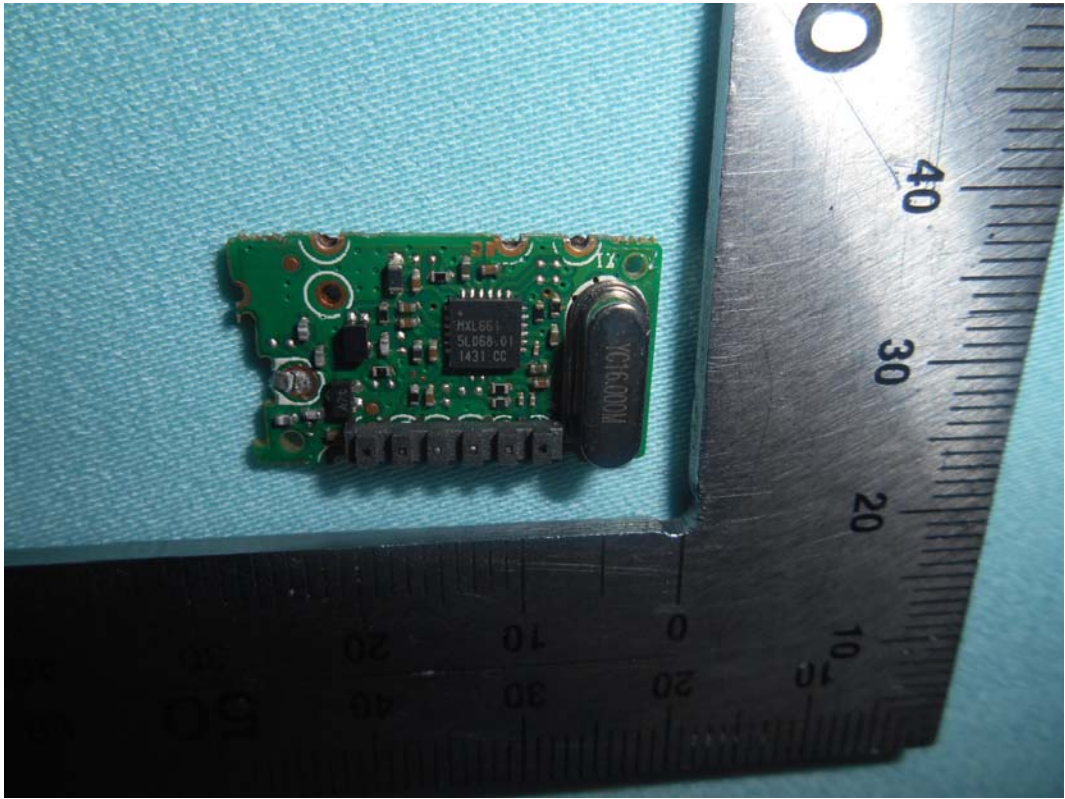


FIGURE 7
LED LCD TV (M/N: 40H5B)
TUNER BOARD (SOLDERED SIDE)

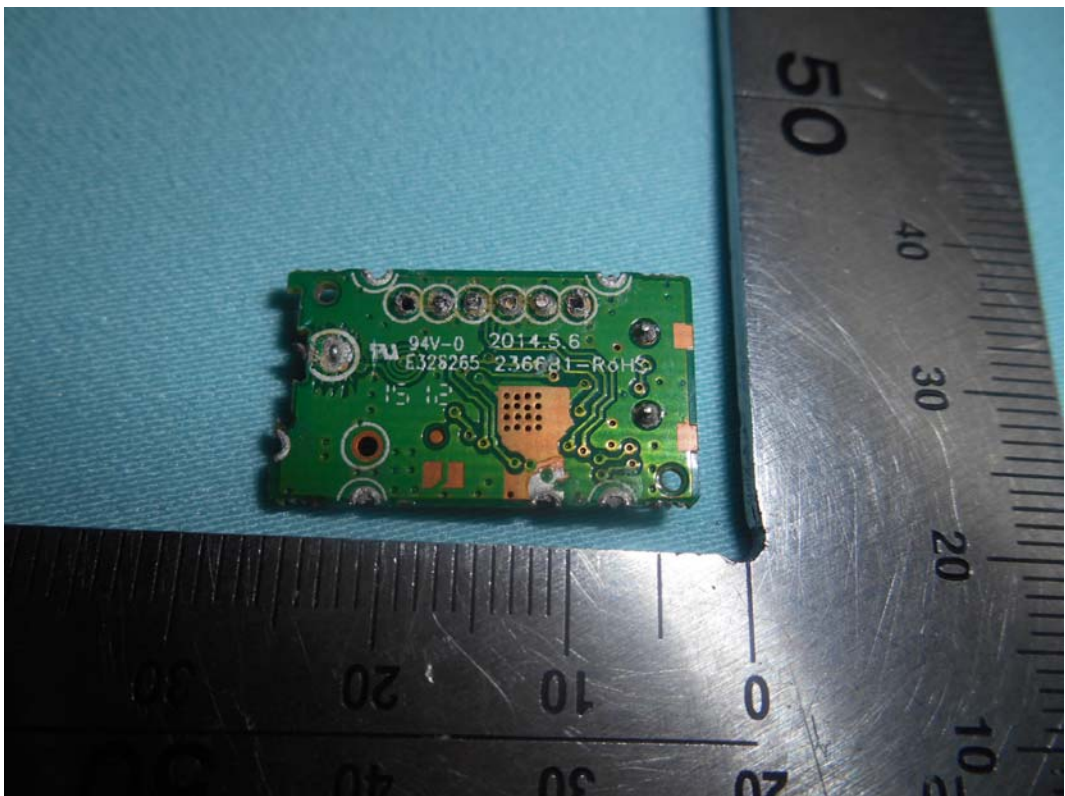


FIGURE 8
LED LCD TV (M/N: 40H5B)
TUNER CRYSTAL ON MAIN BOARD



FIGURE 9
LED LCD TV (M/N: 40H5B)
RF BOARD (COMPONENT SIDE)



FIGURE 10
LED LCD TV (M/N: 40H5B)
RF BOARD (SOLDERED SIDE)

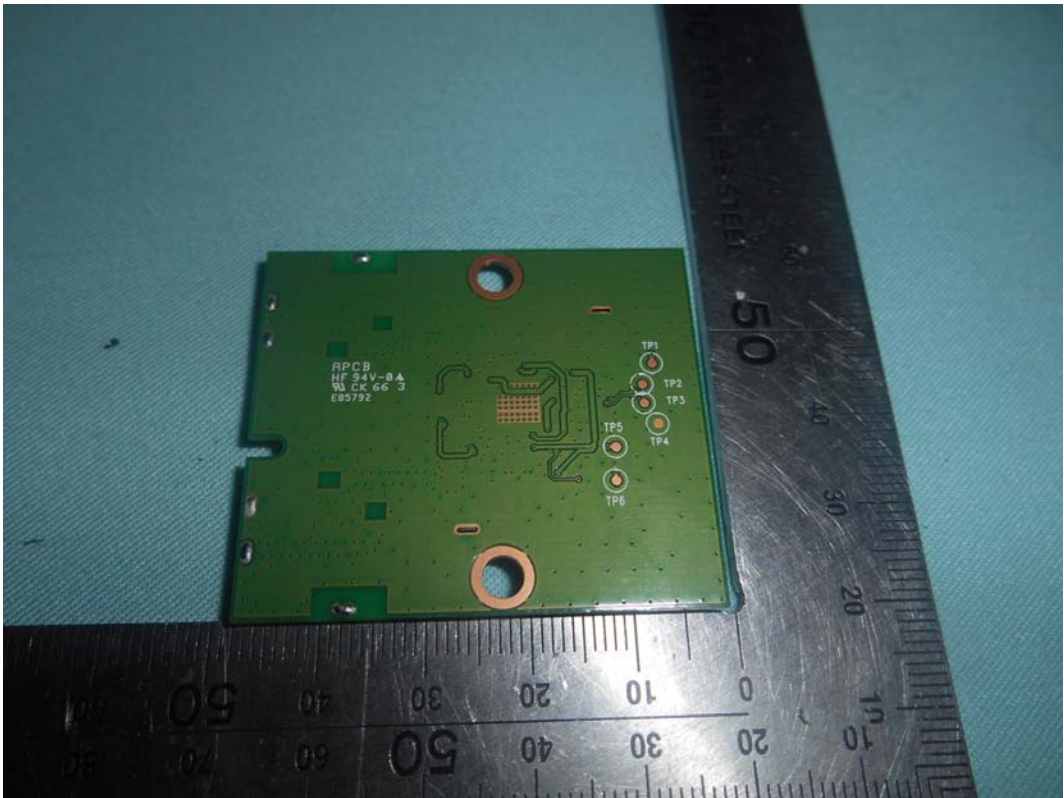


FIGURE 11
LED LCD TV (M/N: 40H5B)
RF BOARD LABEL



FIGURE 12
LED LCD TV (M/N: 40H5B)
CHIP AND CRYSTAL ON RF BOARD

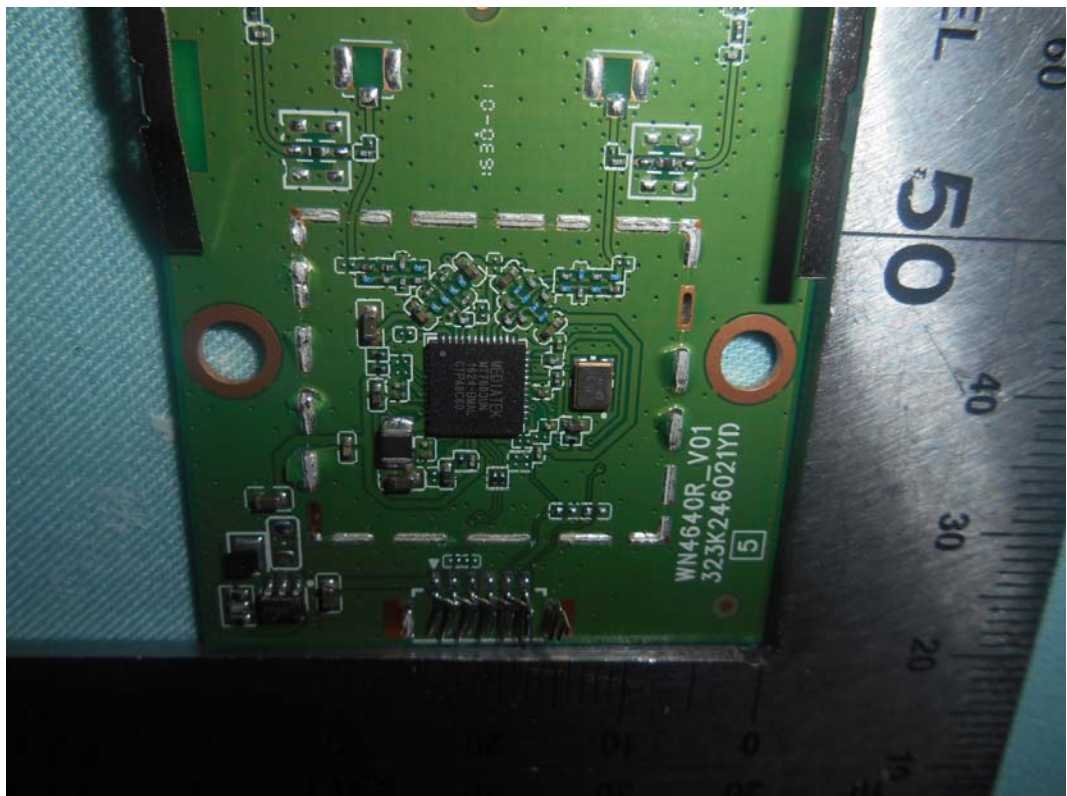


FIGURE 13
LED LCD TV (M/N: 40H5B)
KEY BOARD (COMPONENT SIDE)

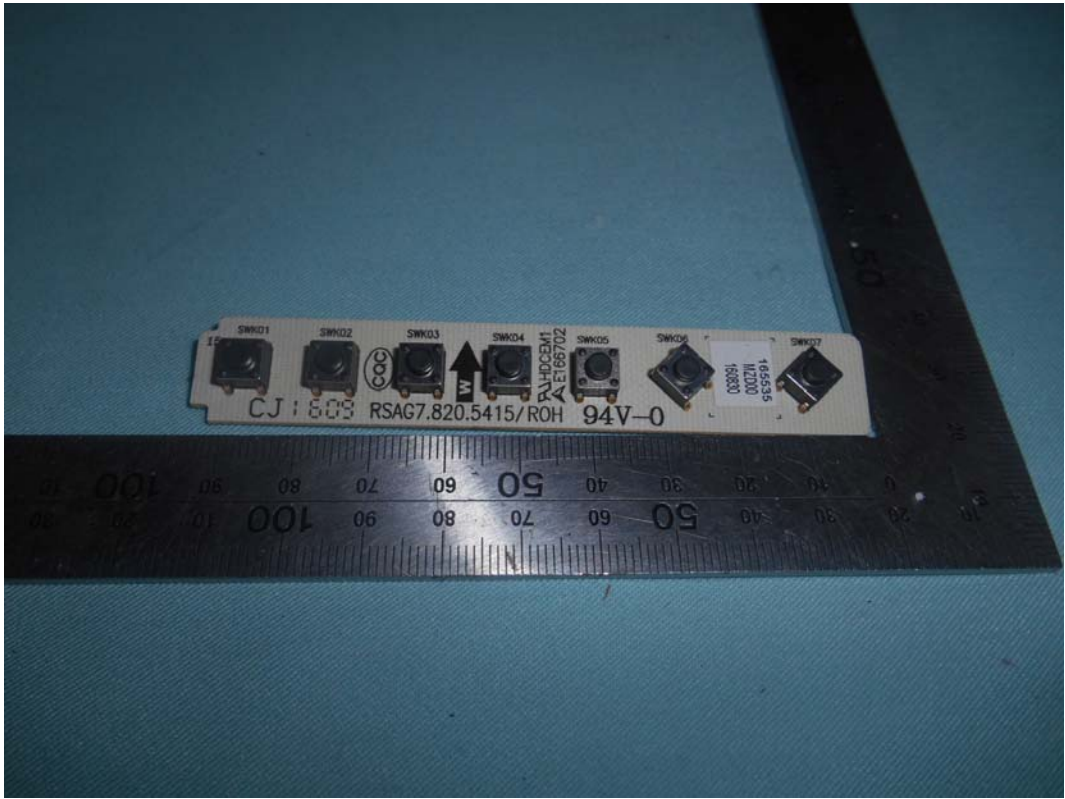


FIGURE 14
LED LCD TV (M/N: 40H5B)
KEY BOARD (SOLDERED SIDE)

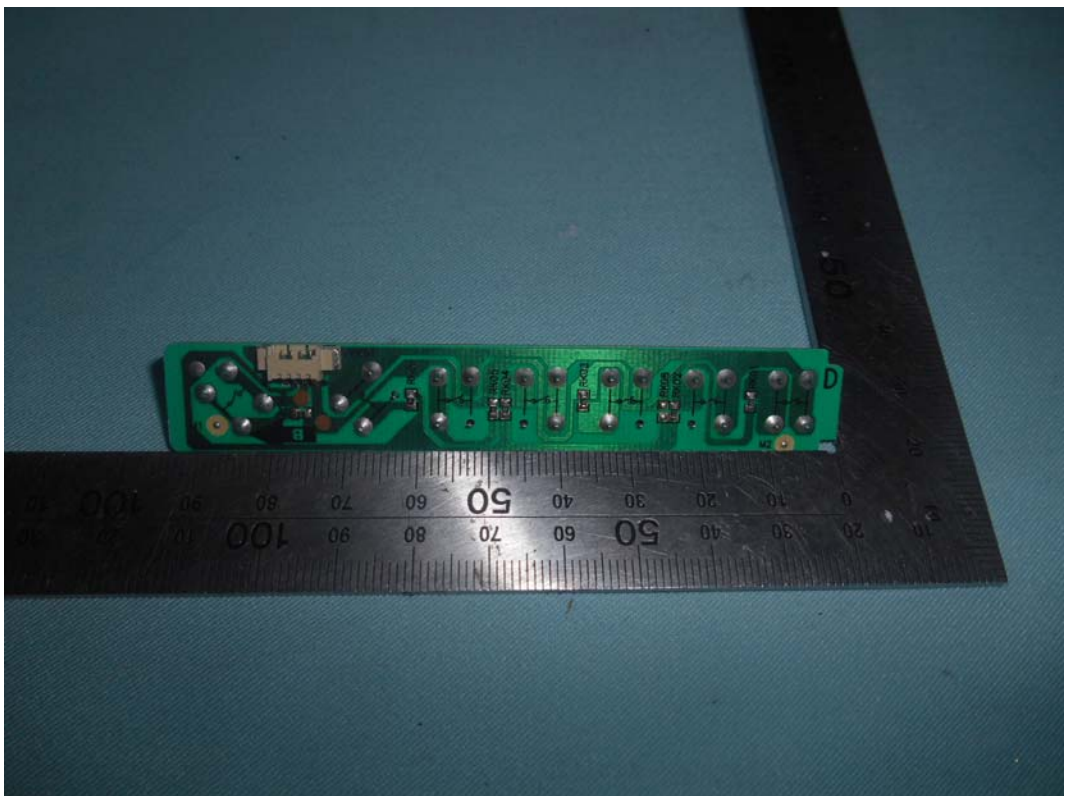


FIGURE 15
LED LCD TV (M/N: 40H5B)
IR BOARD (COMPONENT SIDE)

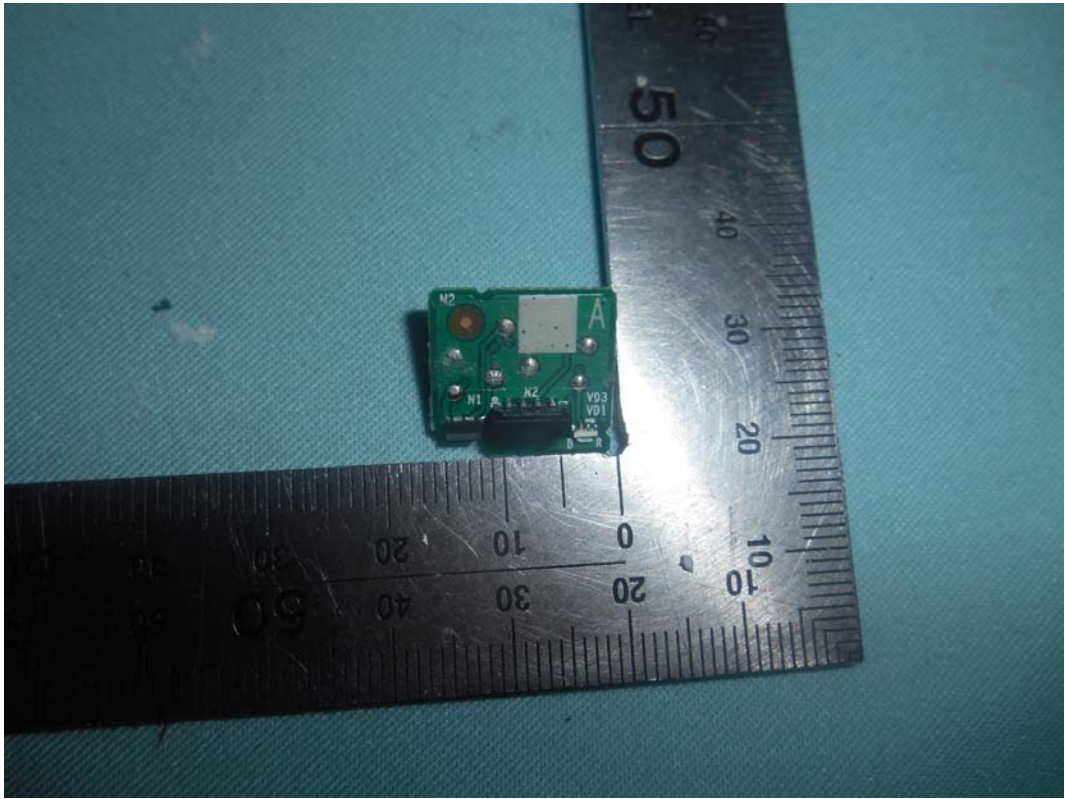


FIGURE 16
LED LCD TV (M/N: 40H5B)
IR BOARD (SOLDERED SIDE)

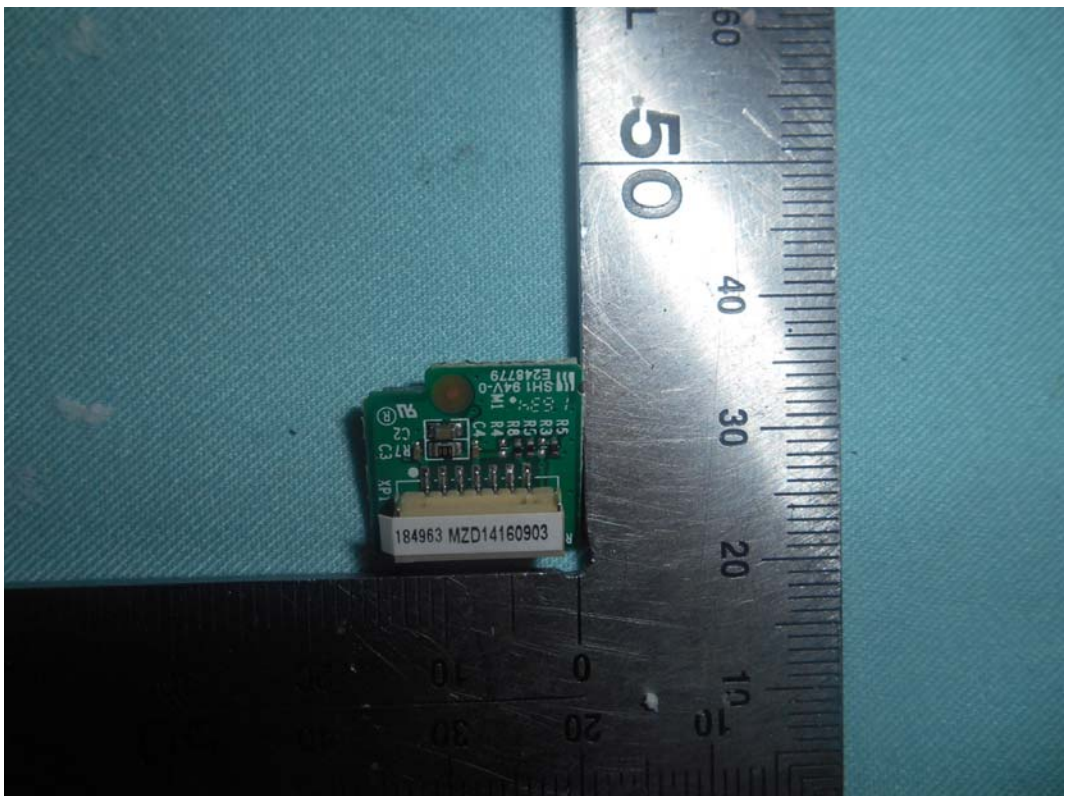


FIGURE 17
LED LCD TV (M/N: 40H5B)
DEBUG

