

FIGURE 1
LED LCD TV (M/N: 43CU6100)
COVER REMOVED

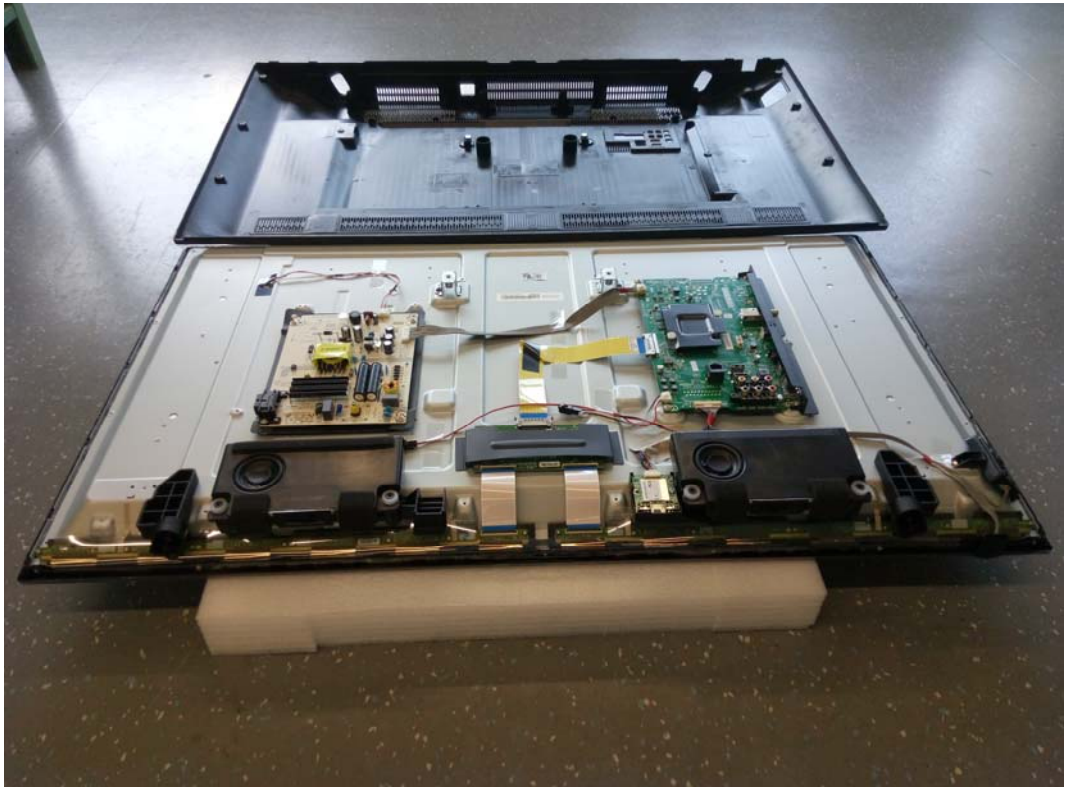


FIGURE 2
LED LCD TV (M/N: 43CU6100)
LCD PANEL LABEL



FIGURE 3
LED LCD TV (M/N: 43CU6100)
POWER BOARD (COMPONENT SIDE)

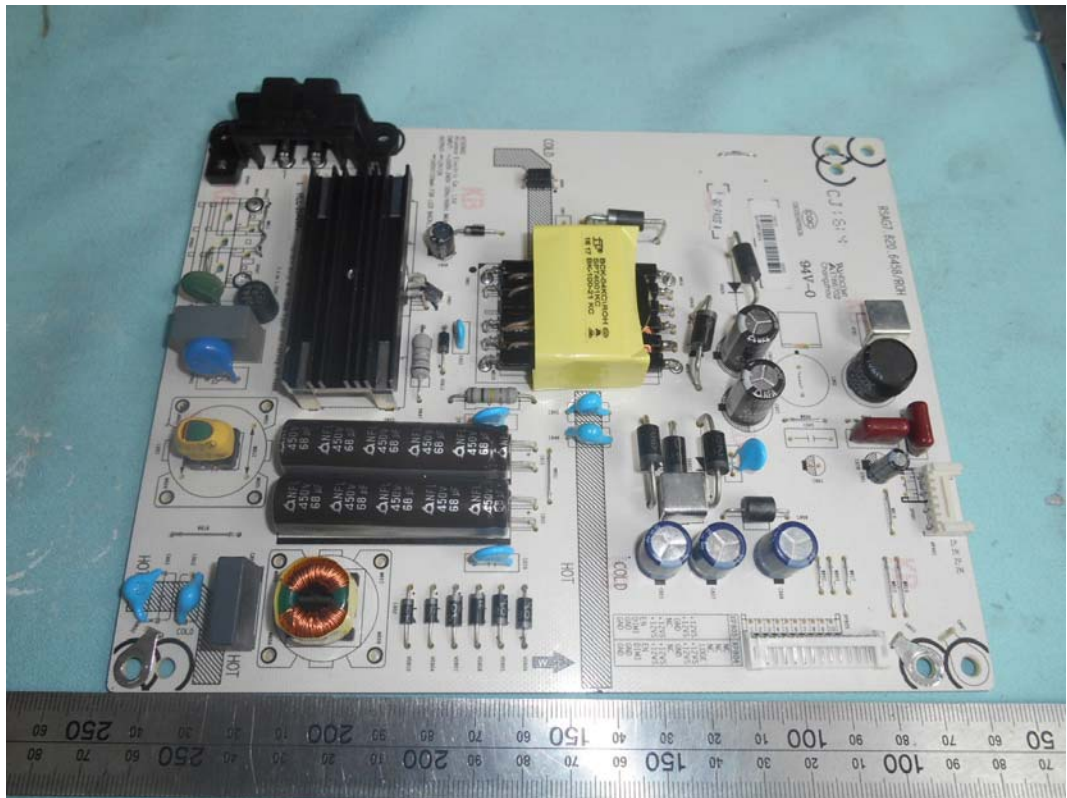
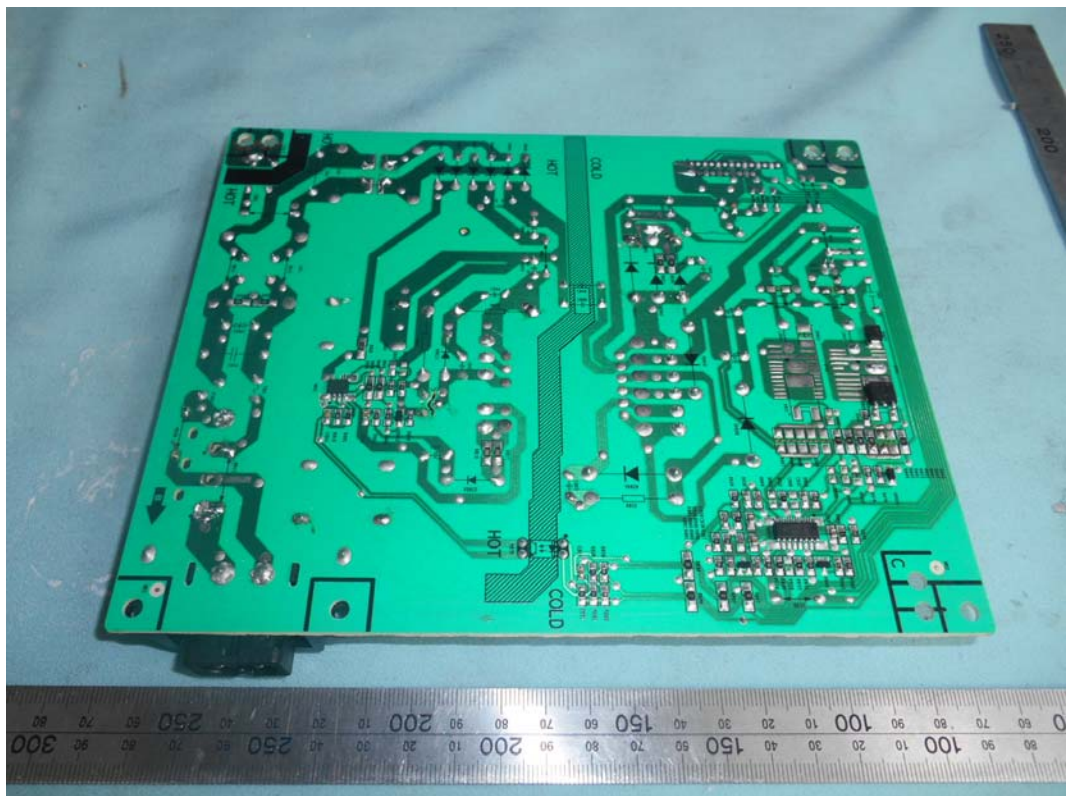


FIGURE 4
LED LCD TV (M/N: 43CU6100)
POWER BOARD (SOLDERED SIDE)



*FIGURE 5
LED LCD TV (M/N: 43CU6100)
MAIN BOARD (COMPONENT SIDE)*



*FIGURE 6
LED LCD TV (M/N: 43CU6100)
MAIN BOARD (SOLDERED SIDE)*

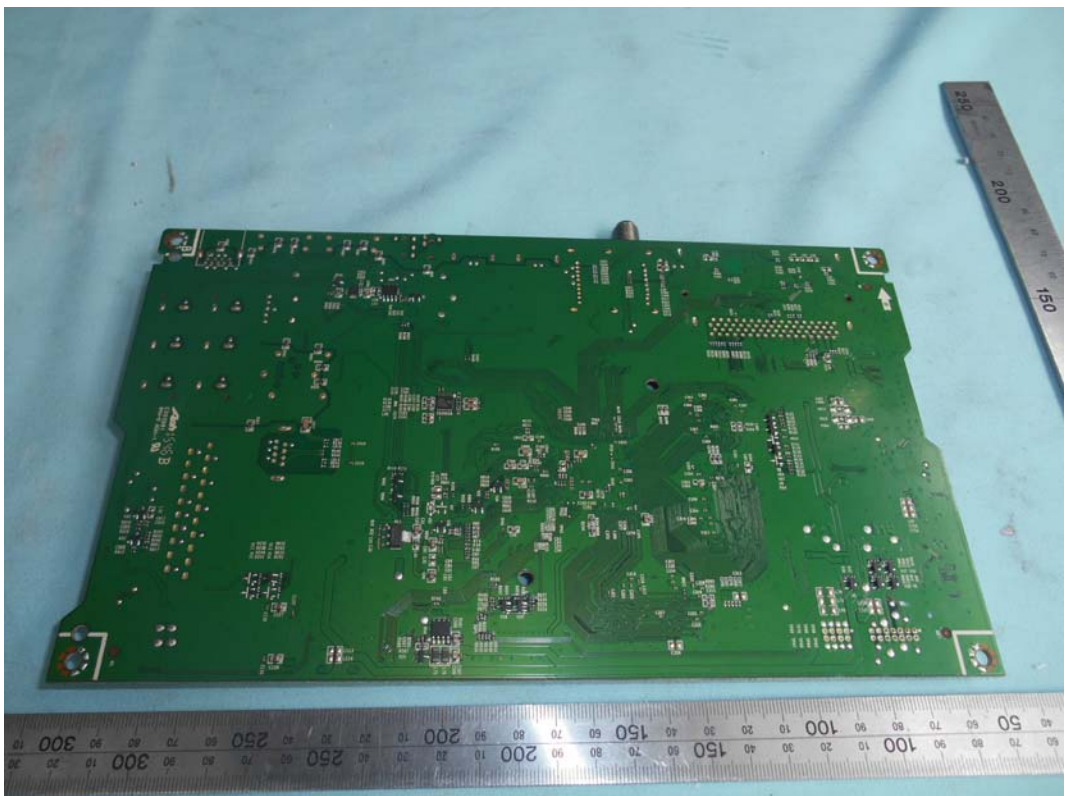


FIGURE 7
LED LCD TV (M/N: 43CU6100)
CHIP & CRYSTAL ON MAIN BOARD



FIGURE 8
LED LCD TV (M/N: 43CU6100)
TUNER

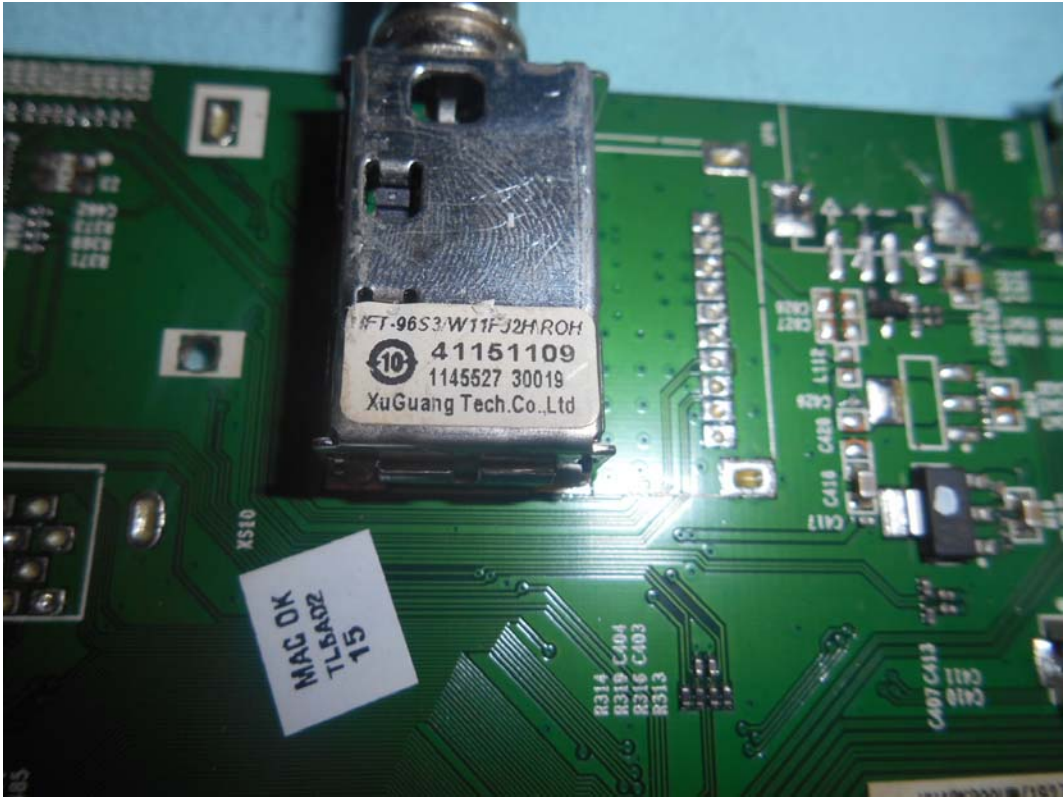


FIGURE 9
LED LCD TV (M/N: 43CU6100)
TUNER BOARD (COMPONENT SIDE)

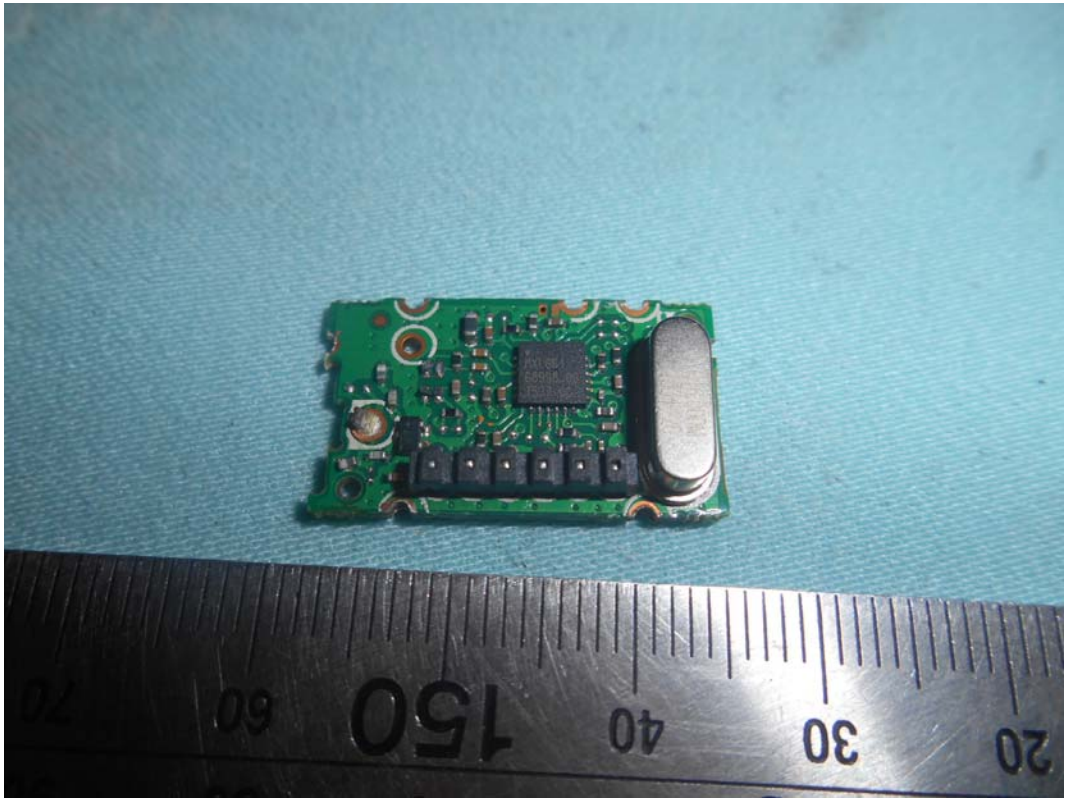


FIGURE 10
LED LCD TV (M/N: 43CU6100)
TUNER BOARD (SOLDERED SIDE)

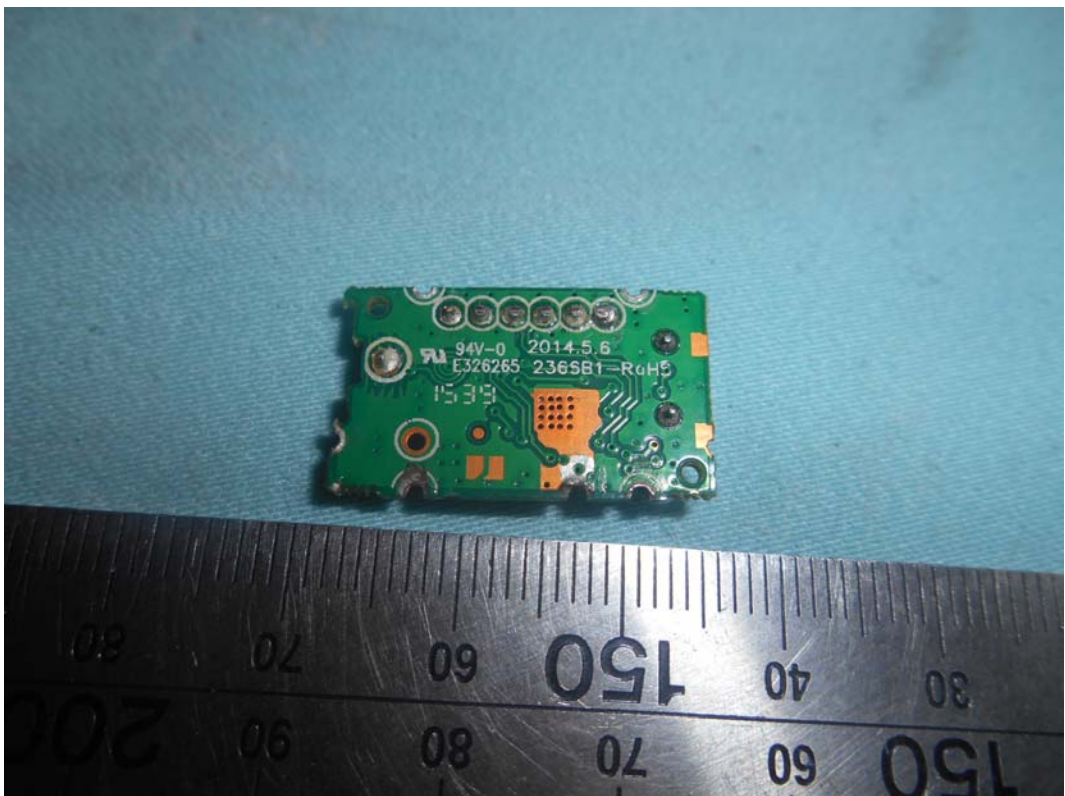


FIGURE 11
LED LCD TV (M/N: 43CU6100)
TUNER & CRYSTAL ON MAIN BOARD



FIGURE 12
LED LCD TV (M/N: 43CU6100)
PANEL BOARD (COMPONENT SIDE)



FIGURE 13
LED LCD TV (M/N: 43CU6100)
PANEL BOARD (SOLDERED SIDE)

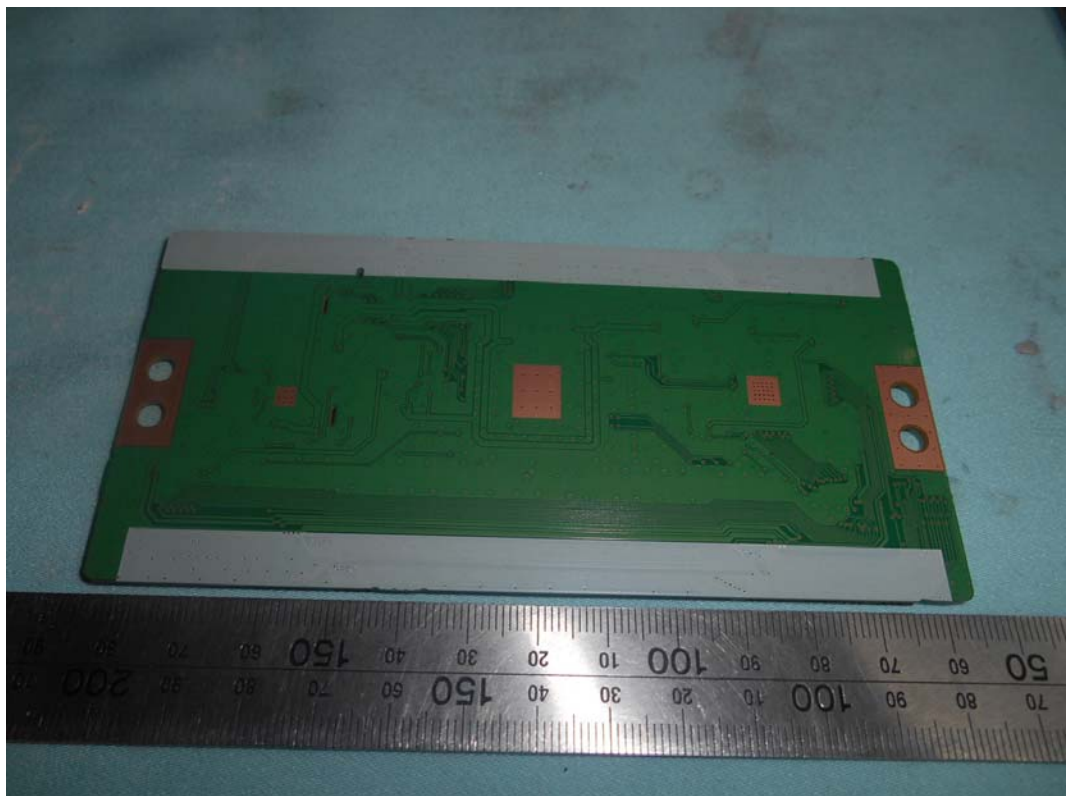


FIGURE 16
LED LCD TV (M/N: 43CU6100)
RF BOARD (SOLDERED SIDE)

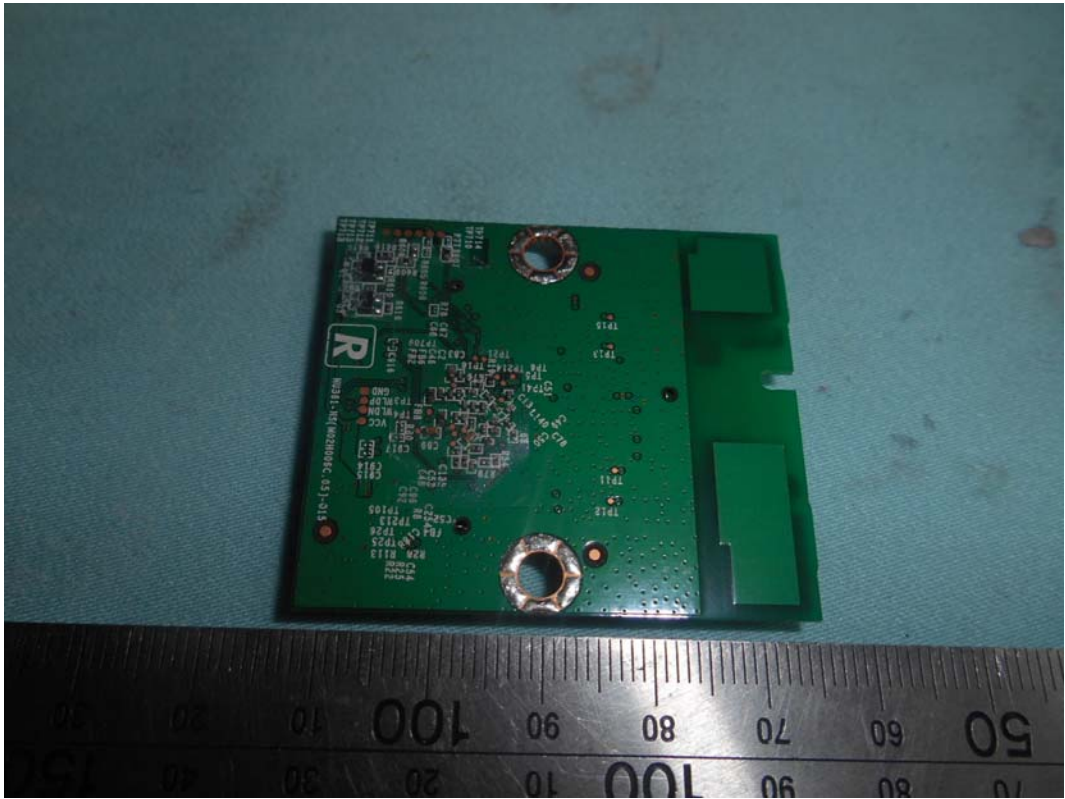


FIGURE 17
LED LCD TV (M/N: 43CU6100)
RF BOARD LABEL



FIGURE 18
LED LCD TV (M/N: 43CU6100)
RF BOARD COVER REMOVED



FIGURE 19
LED LCD TV (M/N: 43CU6100)
KEY BOARD (COMPONENT SIDE)

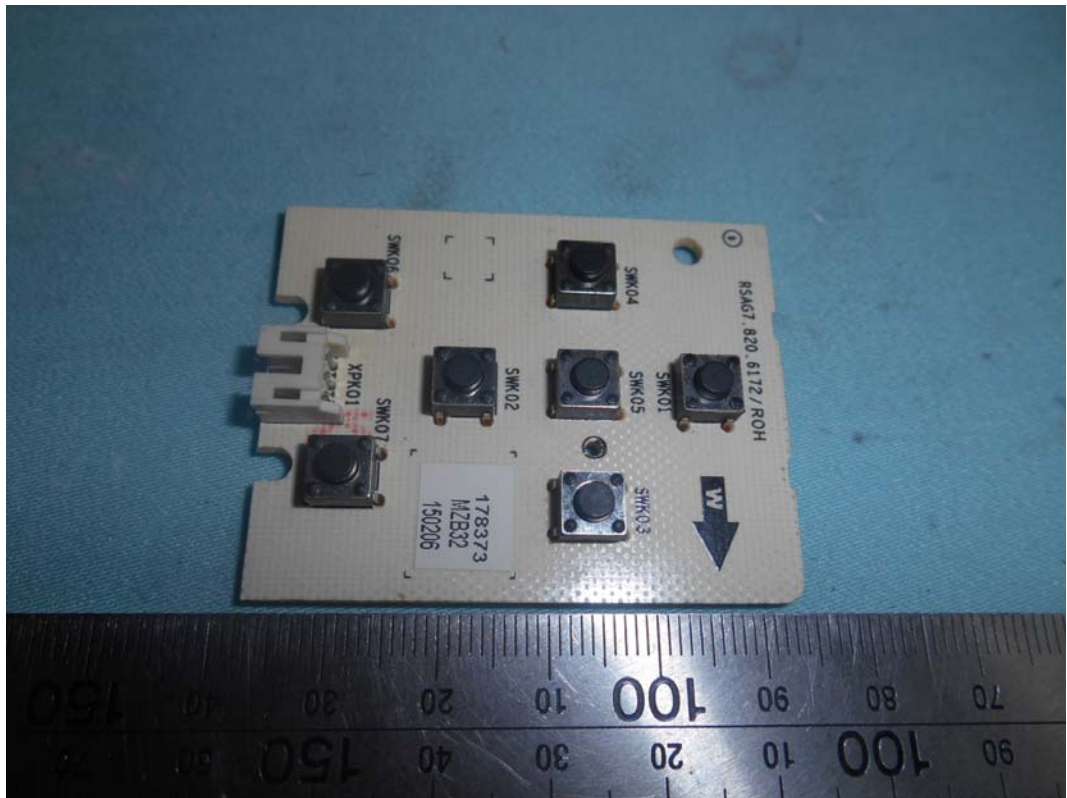


FIGURE 20
LED LCD TV (M/N: 43CU6100)
KEY BOARD (SOLDERED SIDE)

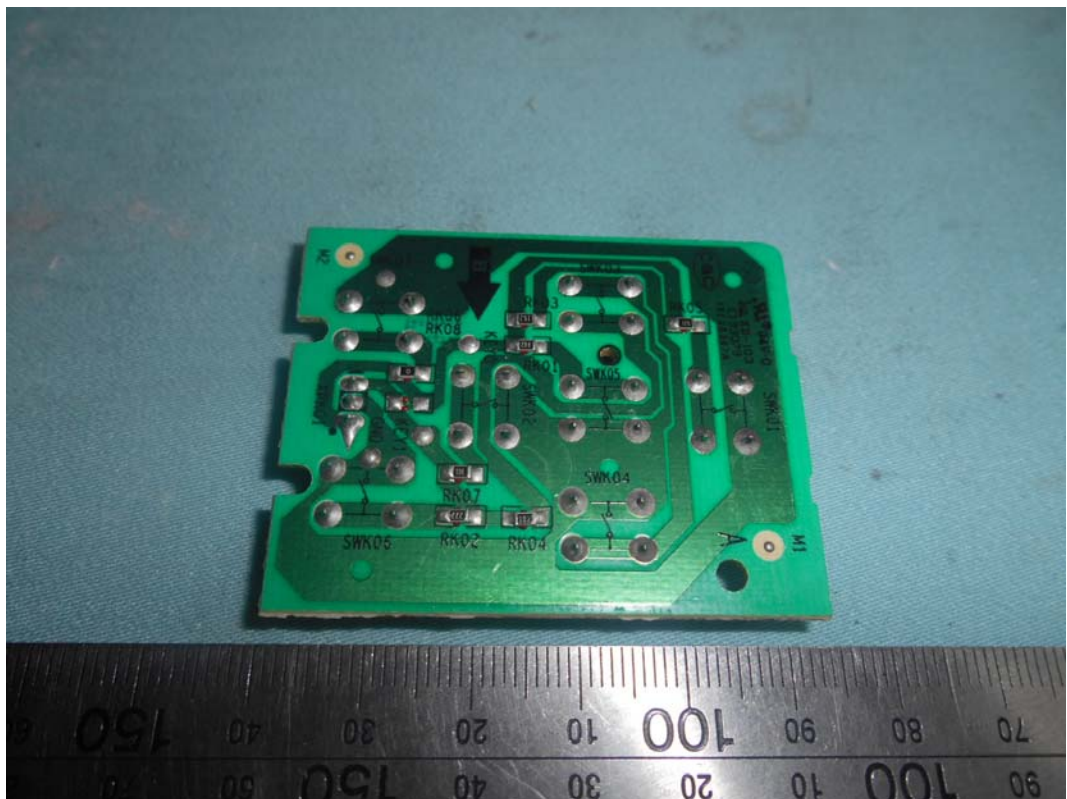


FIGURE 21
LED LCD TV (M/N: 43CU6100)
IR BOARD (COMPONENT SIDE)

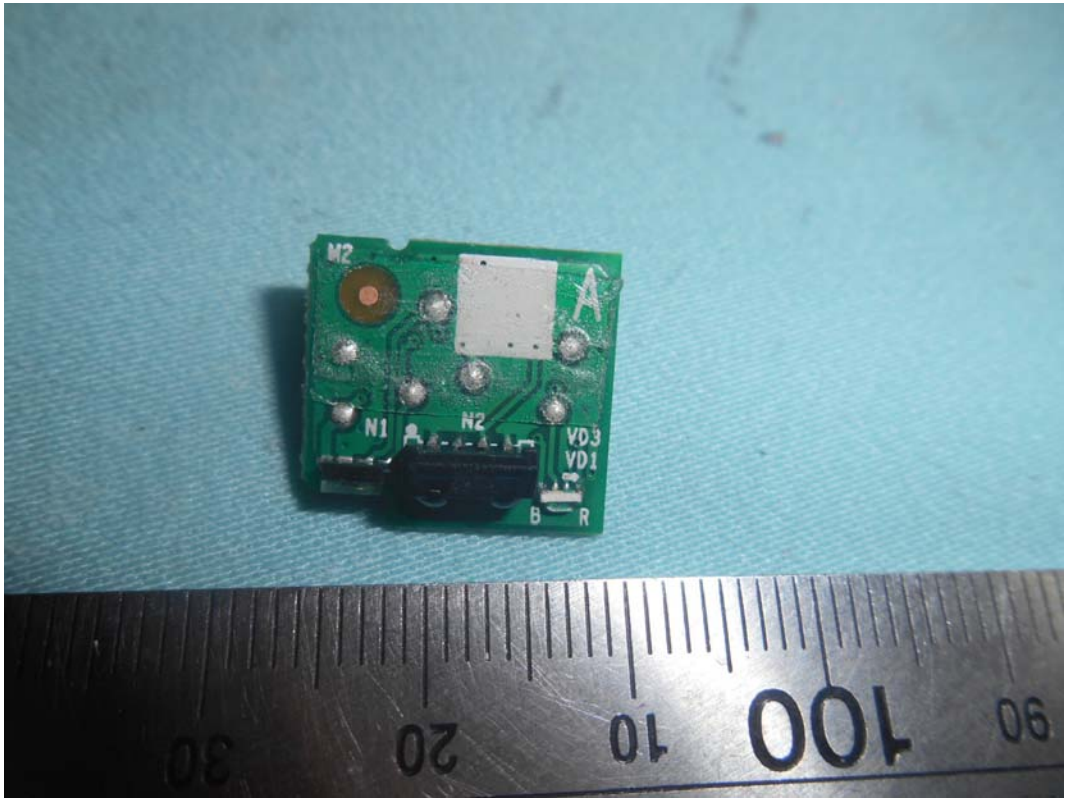


FIGURE 22
LED LCD TV (M/N: 43CU6100)
IR BOARD (SOLDERED SIDE)

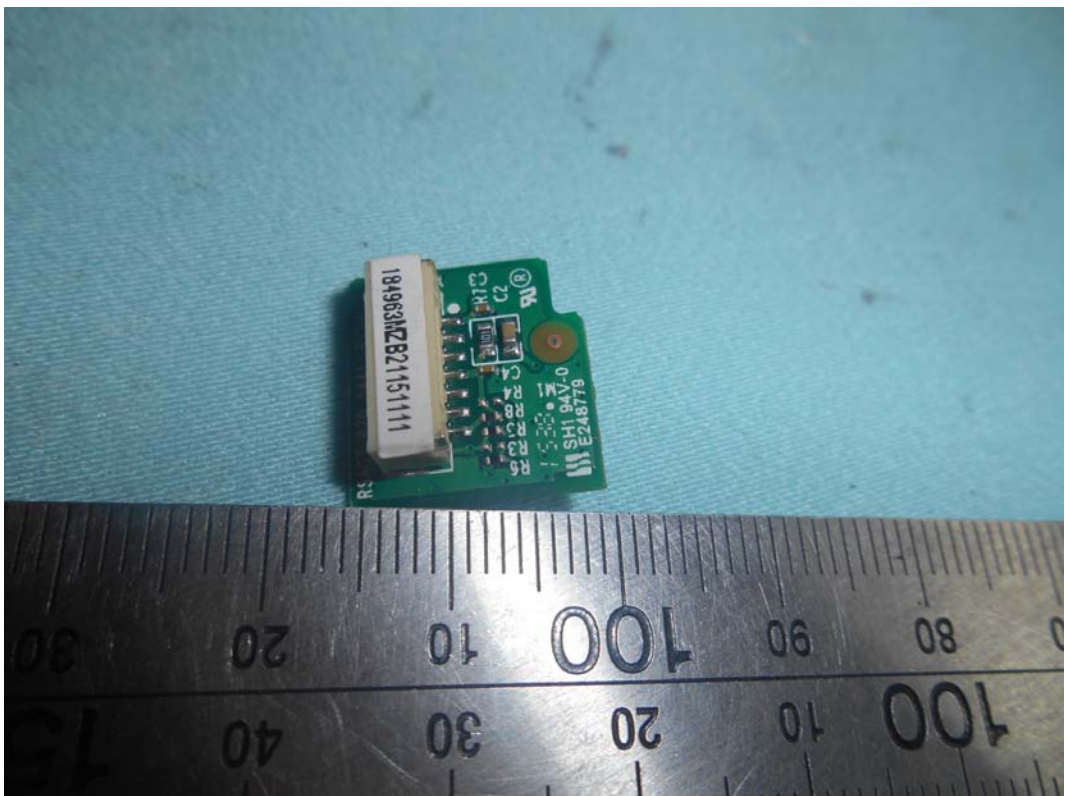


FIGURE 23
LED LCD TV (M/N: 43CU6100)
DEBUG#1

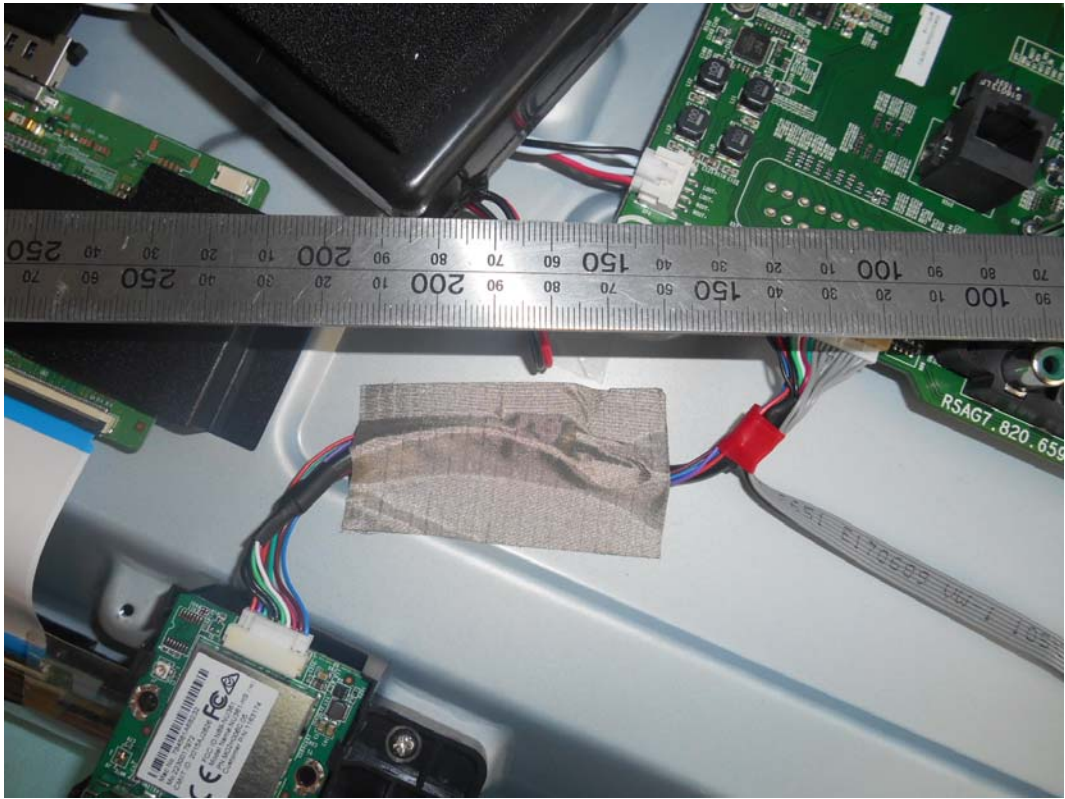


FIGURE 24
LED LCD TV (M/N: 43CU6100)
DEBUG#2

