

*FIGURE 1*  
*LED LCD TV (M/N: LC-43N7000U)*  
*COVER REMOVED*



FIGURE 2  
LED LCD TV (M/N: LC-43N7000U)  
LCD PANEL LABEL



*FIGURE 3*  
*LED LCD TV (M/N: LC-43N7000U)*  
*MAIN BOARD (COMPONENT SIDE)*



*FIGURE 4*  
*LED LCD TV (M/N: LC-43N7000U)*  
*MAIN BOARD (SOLDERED SIDE)*



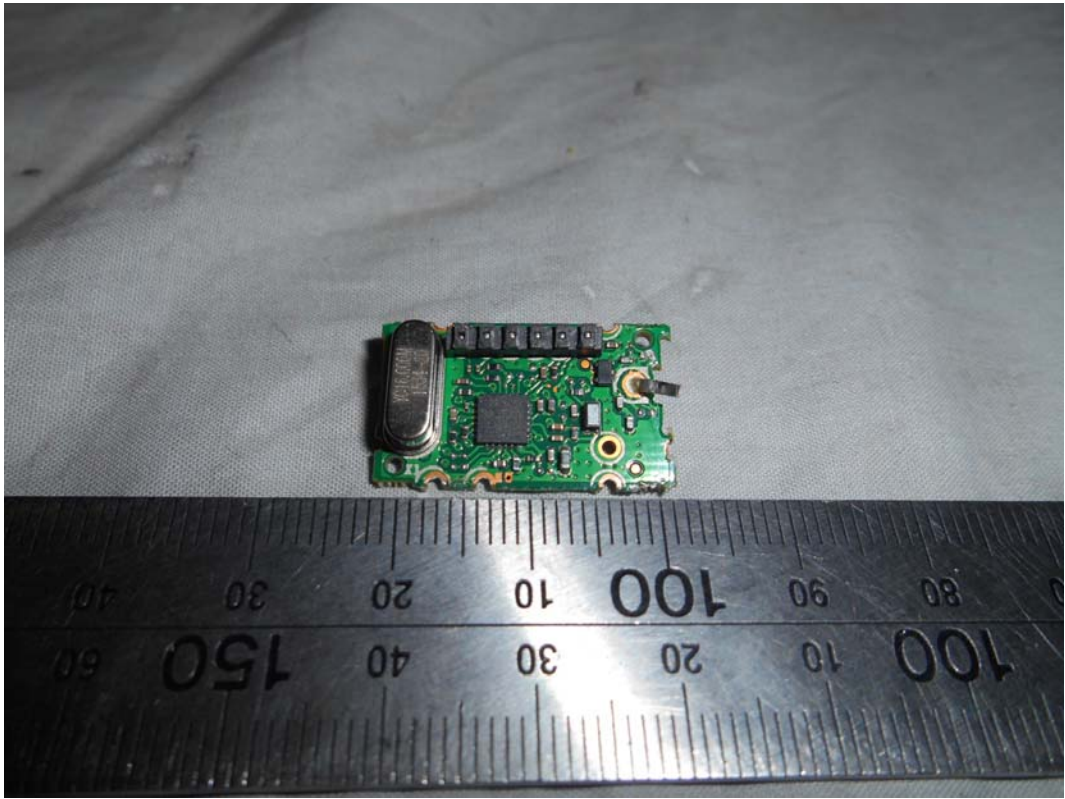
*FIGURE 5*  
*LED LCD TV (M/N: LC-43N7000U)*  
*CHIP & CRYSTAL ON MAIN BOARD*



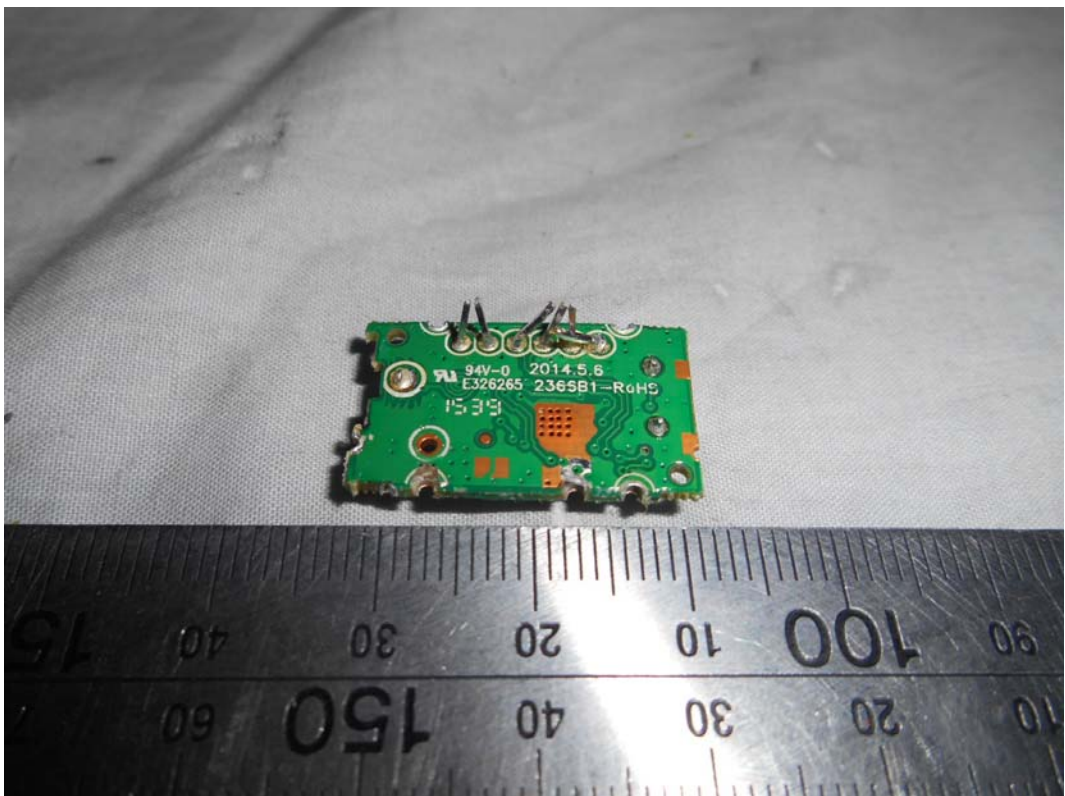
*FIGURE 6*  
*LED LCD TV (M/N: LC-43N7000U)*  
*TUNER*



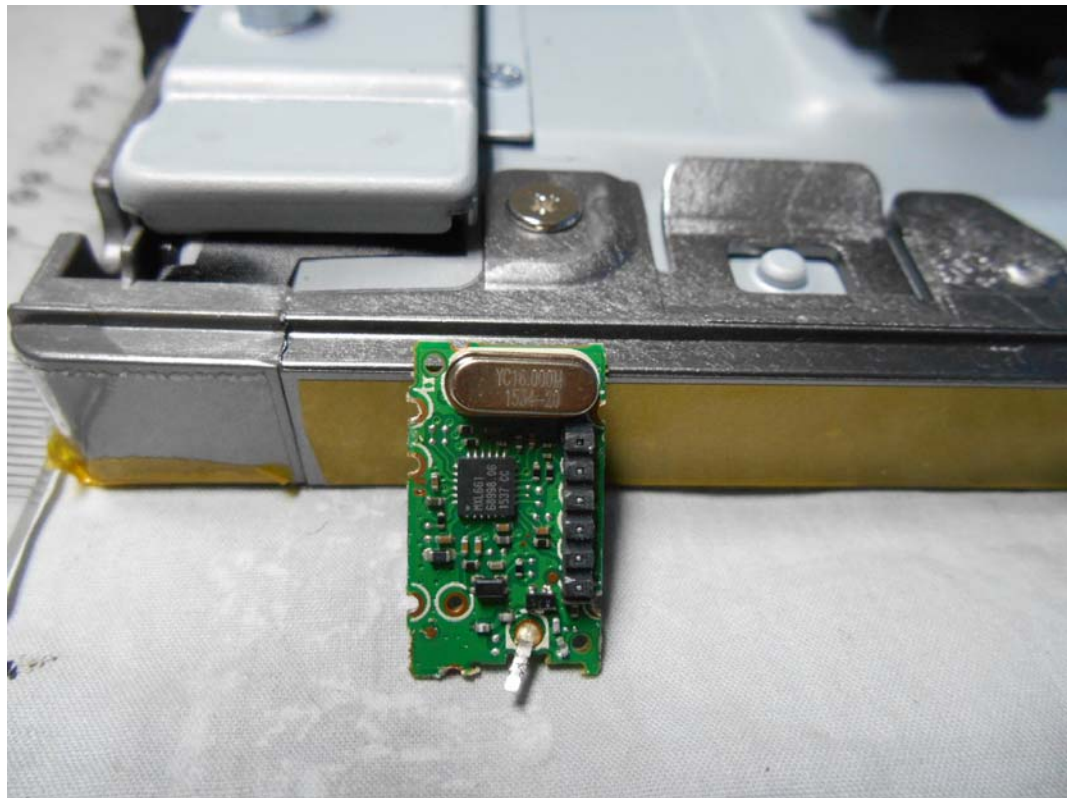
*FIGURE 7*  
*LED LCD TV (M/N: LC-43N7000U)*  
*TUNER BOARD (COMPONENT SIDE)*



*FIGURE 8*  
*LED LCD TV (M/N: LC-43N7000U)*  
*TUNER BOARD (SOLDERED SIDE)*



*FIGURE 9*  
*LED LCD TV (M/N: LC-43N7000U)*  
*TUNER CRYSTAL ON MAIN BOARD*



*FIGURE 10*  
*LED LCD TV (M/N: LC-43N7000U)*  
*PANEL BOARD (COMPONENT SIDE)*



*FIGURE 11*  
*LED LCD TV (M/N: LC-43N7000U)*  
*PANEL BOARD (SOLDERED SIDE)*

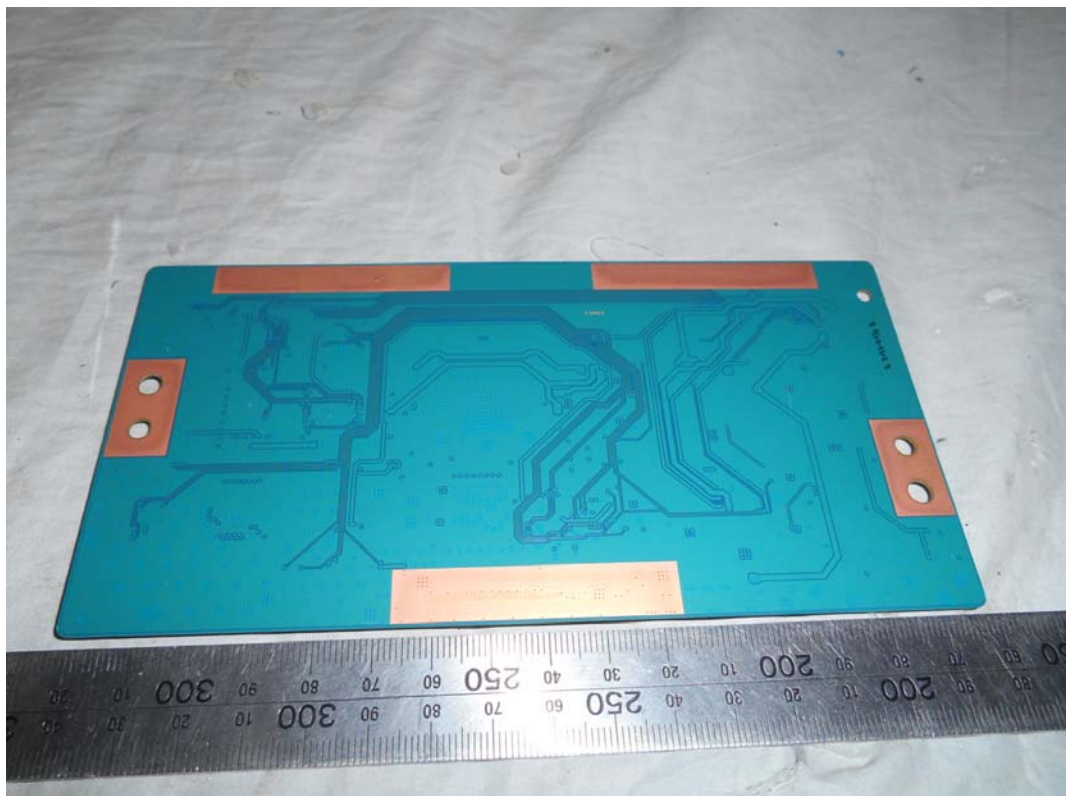


FIGURE 12  
LED LCD TV (M/N: LC-43N7000U)  
CHIP & CRYSTAL ON PANEL BOARD

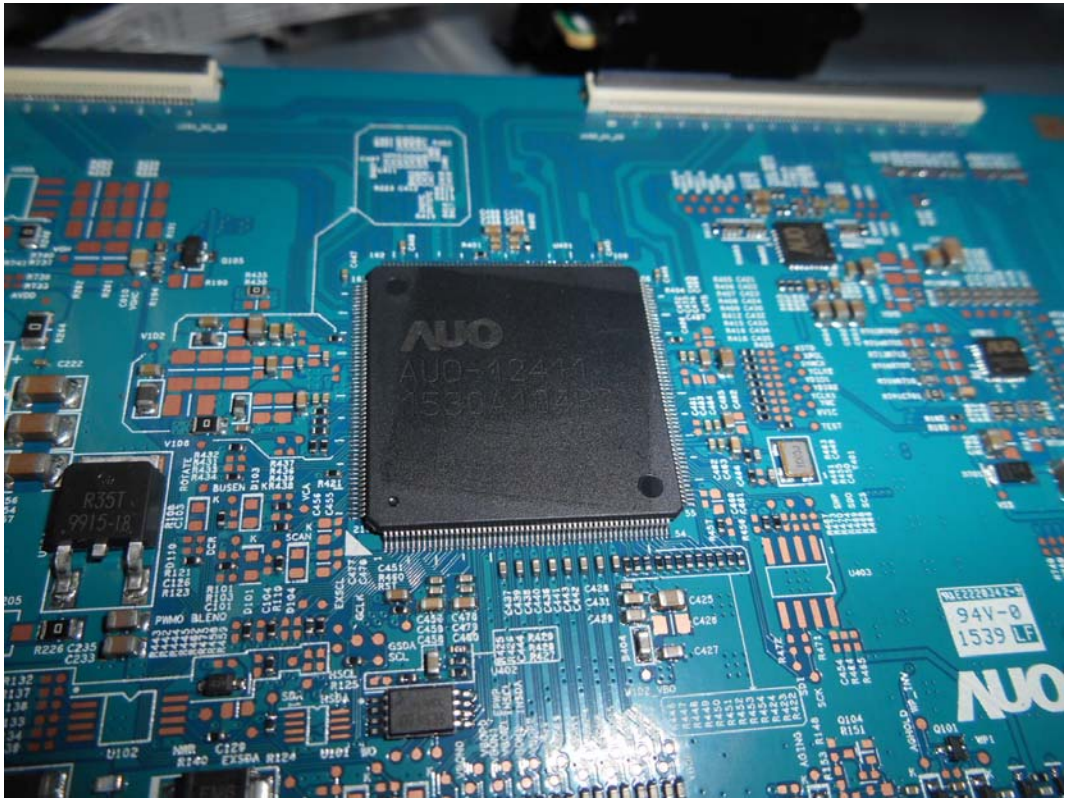




FIGURE 13  
LED LCD TV (M/N: LC-43N7000U)  
RF BOARD (COMPONENT SIDE)



FIGURE 14  
LED LCD TV (M/N: LC-43N7000U)  
RF BOARD (SOLDERED SIDE)



FIGURE 15  
LED LCD TV (M/N: LC-43N7000U)  
CHIP & CRYSTAL ON RF BOARD

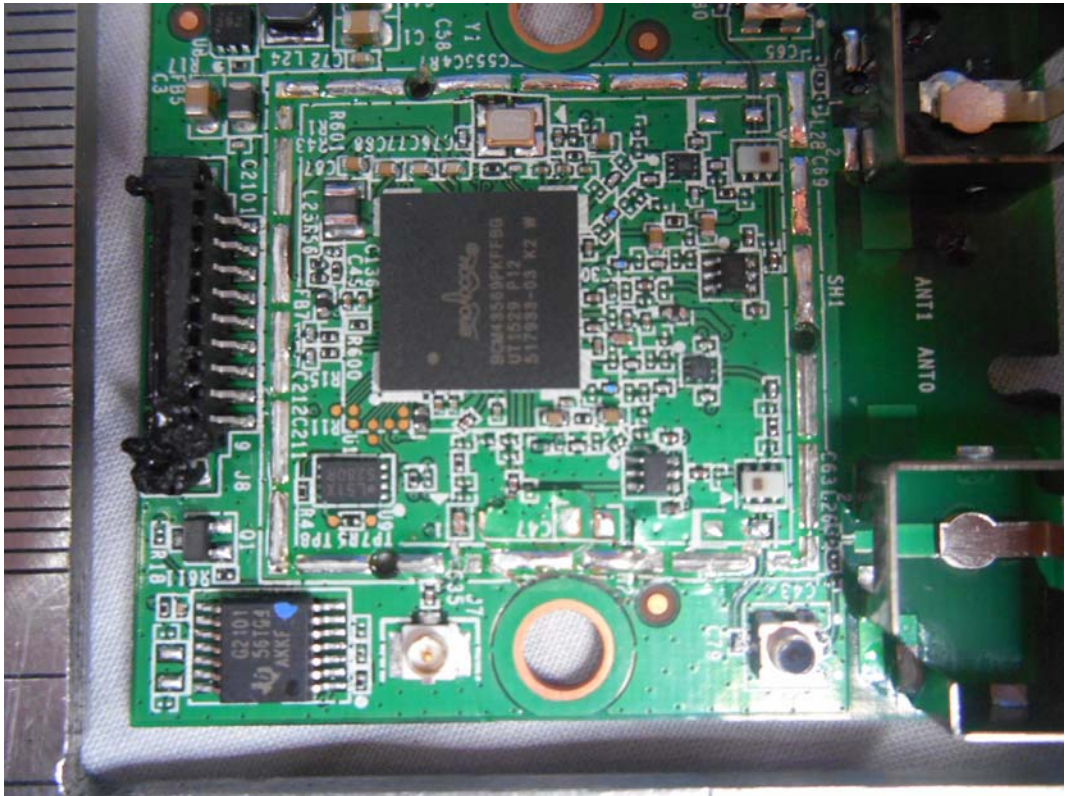


FIGURE 16  
LED LCD TV (M/N: LC-43N7000U)  
POWER BOARD (COMPONENT SIDE)



FIGURE 17  
LED LCD TV (M/N: LC-43N7000U)  
POWER BOARD (SOLDERED SIDE)



FIGURE 18  
LED LCD TV (M/N: LC-43N7000U)  
KEY BOARD (COMPONENT SIDE)

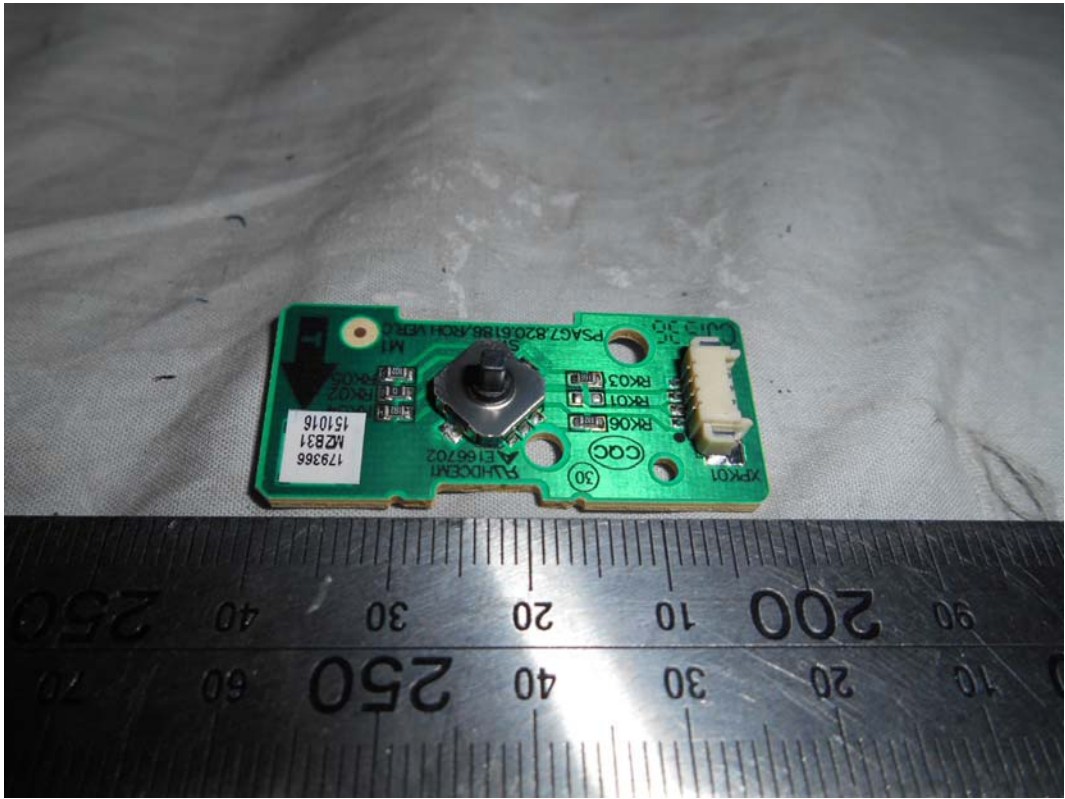


FIGURE 19  
LED LCD TV (M/N: LC-43N7000U)  
KEY BOARD (SOLDERED SIDE)

