

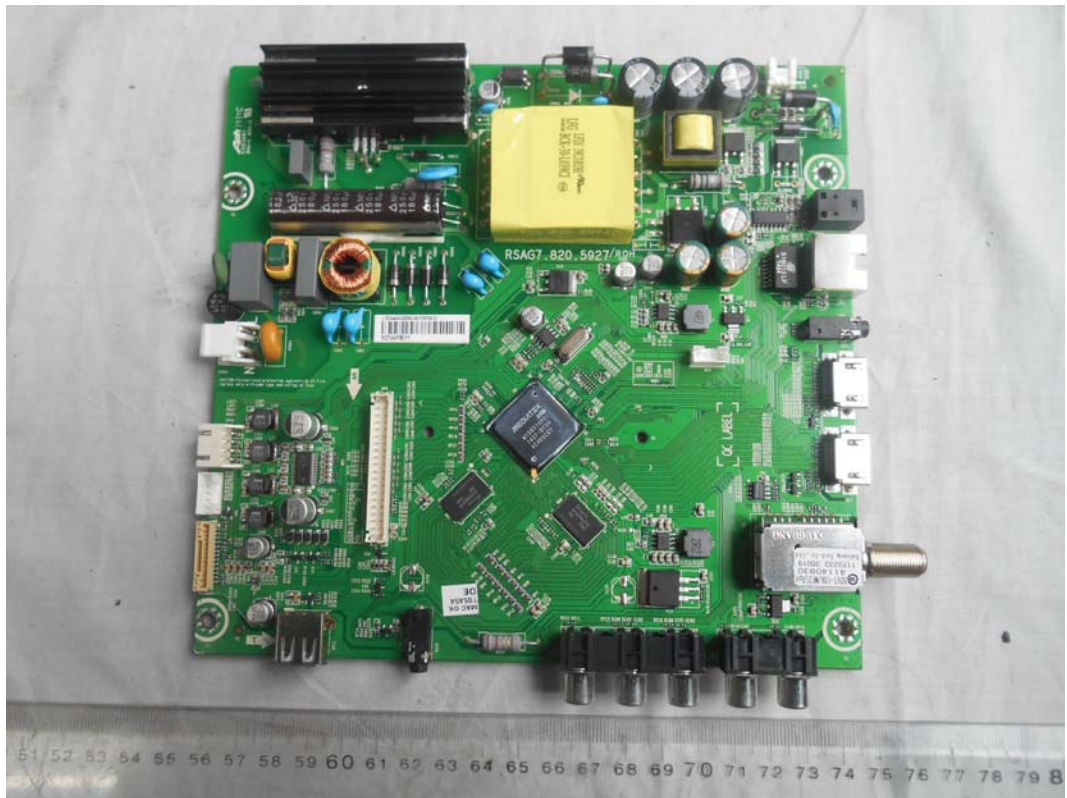
*FIGURE 6*  
*LED LCD TV (M/N: 40H5B)*  
*COVER REMOVED*



*FIGURE 8*  
*LED LCD TV (M/N: 40H5B)*  
*SPEAKER*



*FIGURE 9*  
*LED LCD TV (M/N: 40H5B)*  
*MAIN BOARD (COMPONENT SIDE)*



*FIGURE 10*  
*LED LCD TV (M/N: 40H5B)*  
*MAIN BOARD (SOLDERED SIDE)*



FIGURE 11  
LED LCD TV (M/N: 40H5B)  
CHIP #1 AND CRYSTAL ON MAIN BOARD



FIGURE 12  
LED LCD TV (M/N: 40H5B)  
TUNER ON MAIN BOARD



FIGURE 13  
LED LCD TV (M/N: 40H5B)  
TUNER COVER REMOVED

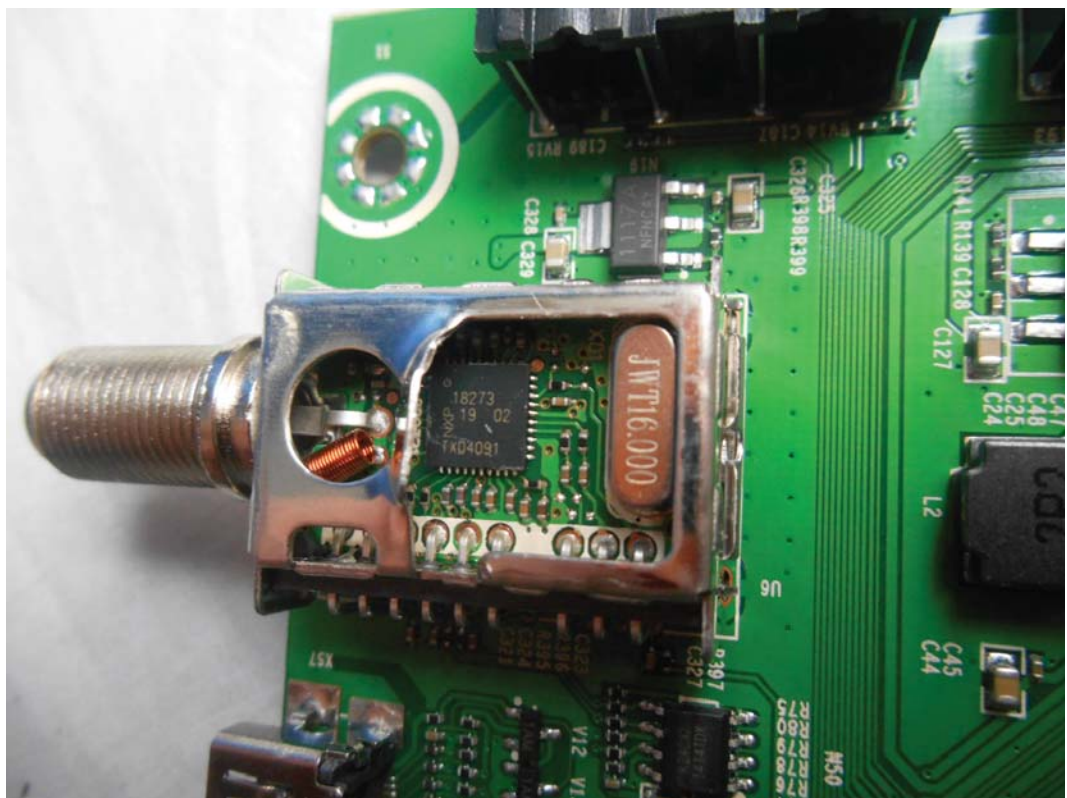


FIGURE 14  
LED LCD TV (M/N: 40H5B)  
KEY BOARD (COMPONENT SIDE)

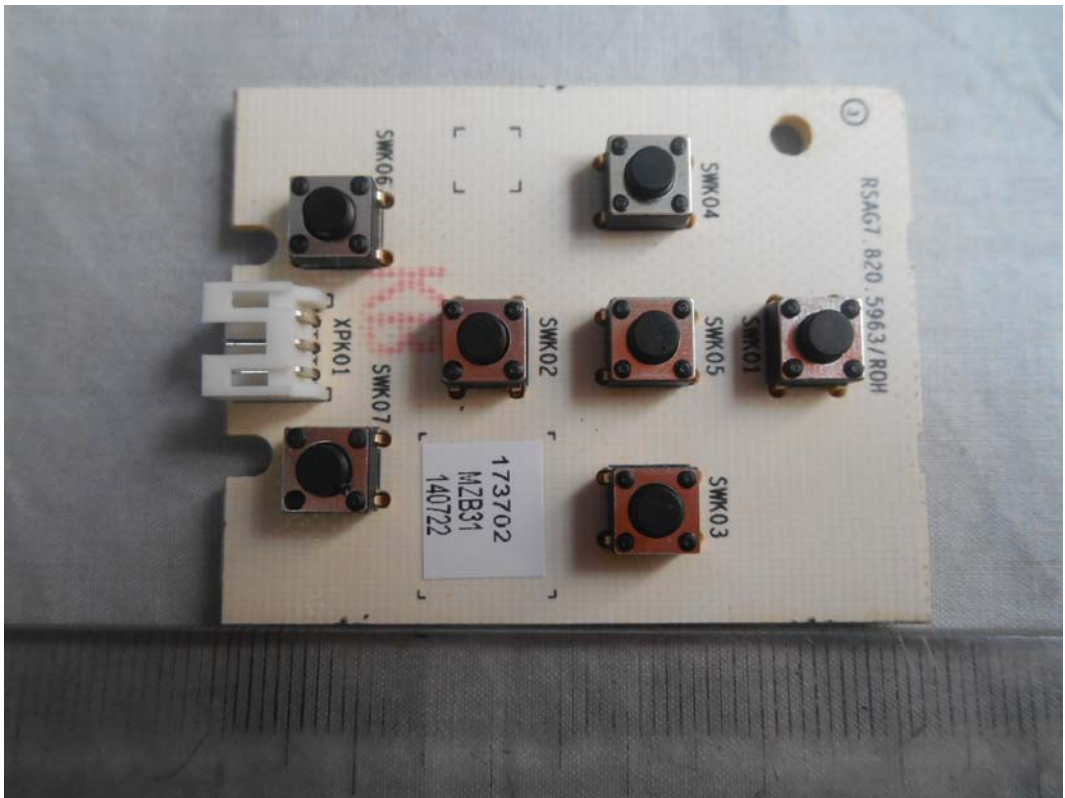


FIGURE 15  
LED LCD TV (M/N: 40H5B)  
KEY BOARD (SOLDERED SIDE)

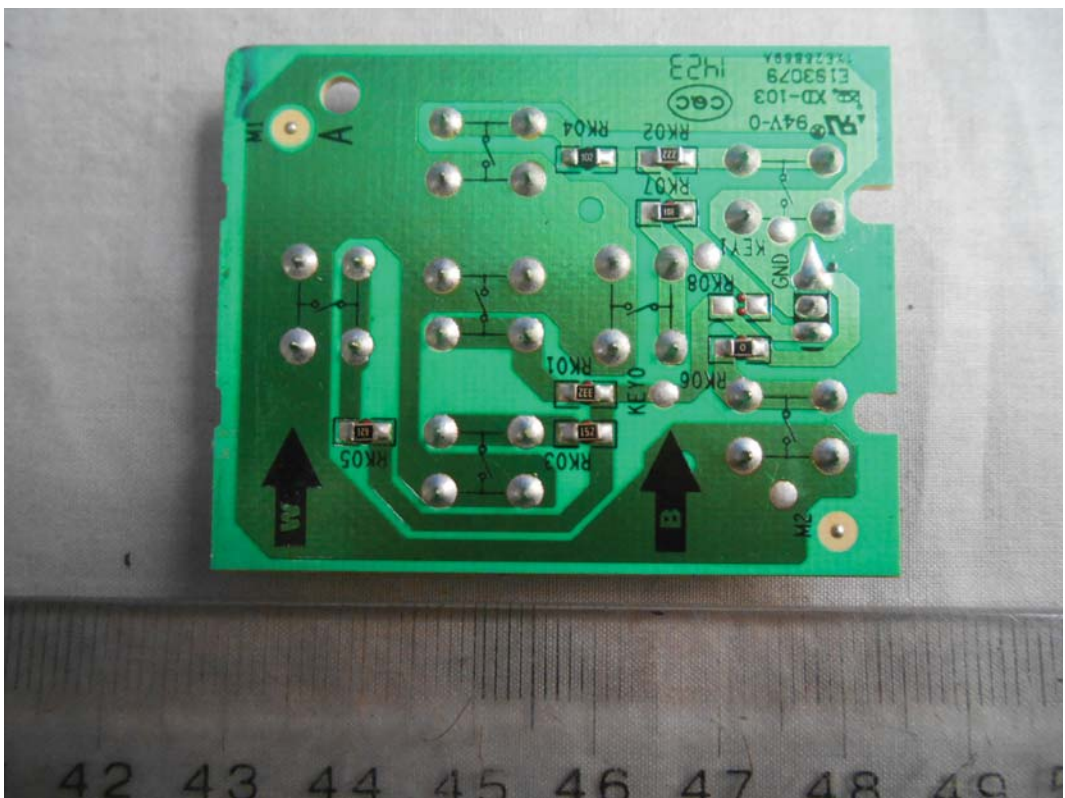


FIGURE 16  
LED LCD TV (M/N: 40H5B)  
RF BOARD (COMPONENT SIDE)



FIGURE 17  
LED LCD TV (M/N: 40H5B)  
RF BOARD (SOLDERED SIDE)

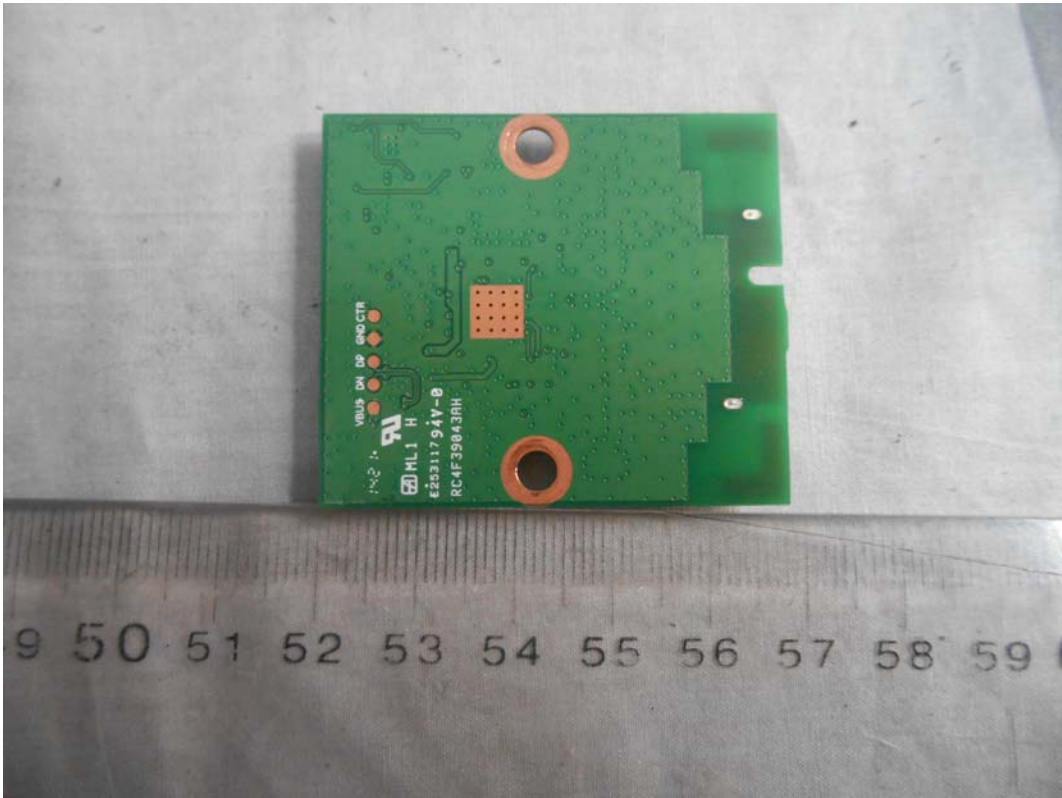
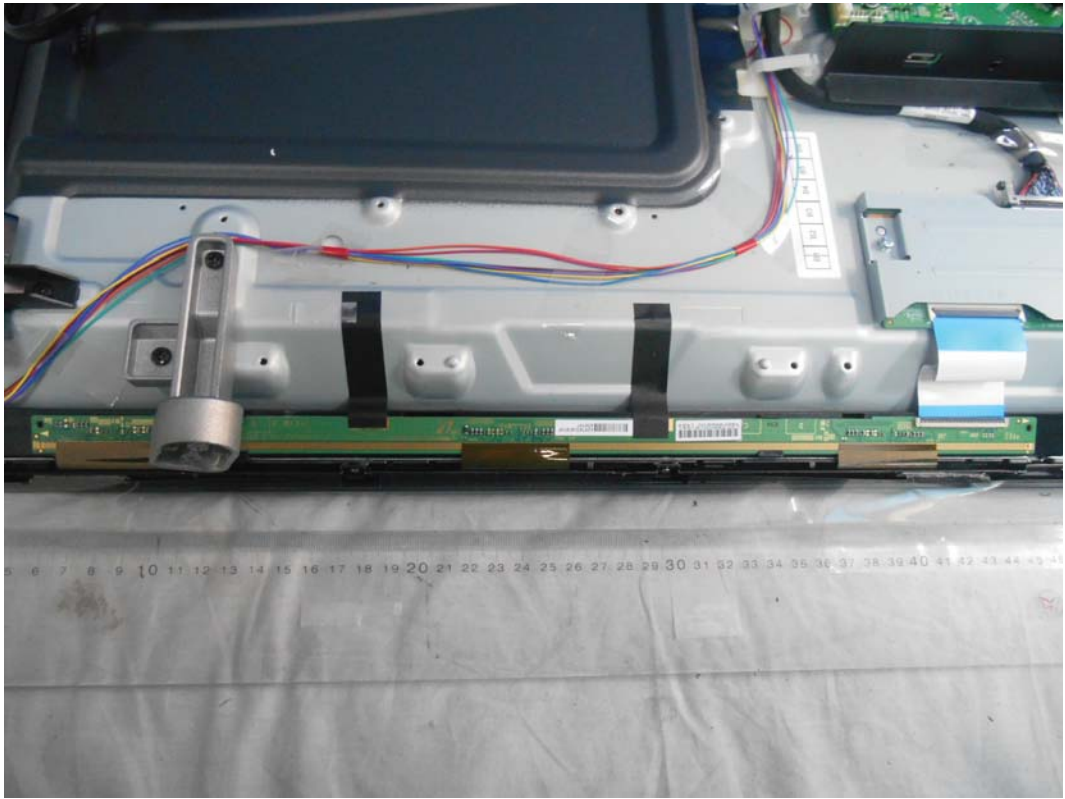


FIGURE 18  
LED LCD TV (M/N: 40H5B)  
LABEL ON RF BOARD





*FIGURE 19  
LED LCD TV (M/N: 40H5B)  
SIGNAL BOARD #1 (COMPONENT SIDE)*



*FIGURE 20  
LED LCD TV (M/N: 40H5B)  
SIGNAL BOARD #2 (COMPONENT SIDE)*



FIGURE 21  
LED LCD TV (M/N: 40H5B)  
CONTROL BOARD (COMPONENT SIDE)

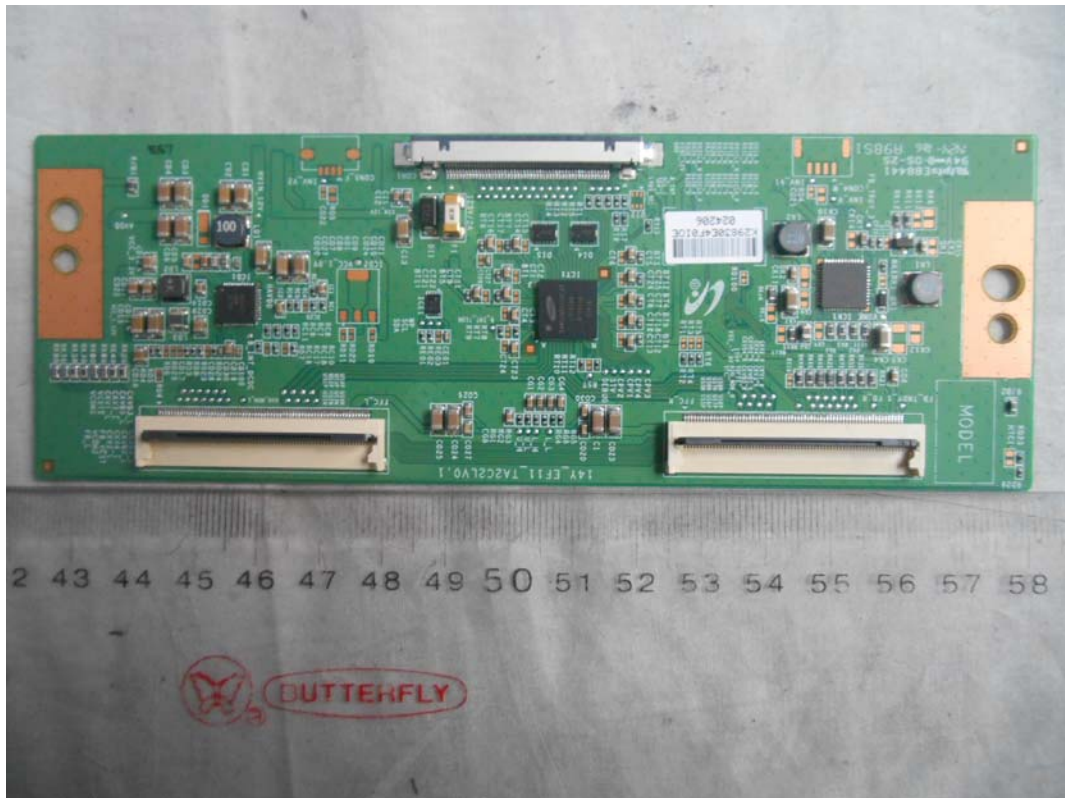


FIGURE 22  
LED LCD TV (M/N: 40H5B)  
CONTROL BOARD (SOLDERED SIDE)

