

FIGURE 1
LED LCD TV (M/N: 40K20D)
COVER REMOVED

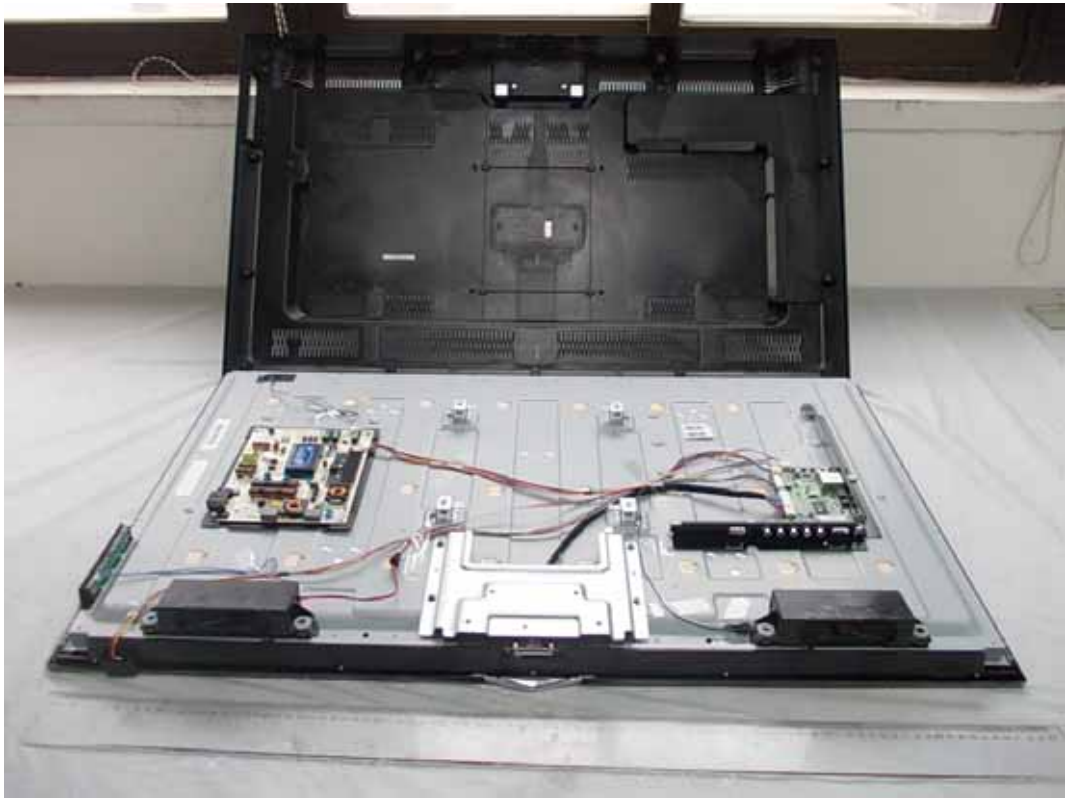


FIGURE 2
LED LCD TV (M/N: 40K20D)
LCD PANEL LABEL



FIGURE 3
LED LCD TV (M/N: 40K20D)
POWER BOARD (COMPONENT SIDE)



FIGURE 4
LED LCD TV (M/N: 40K20D)
POWER BOARD (SOLDERED SIDE)

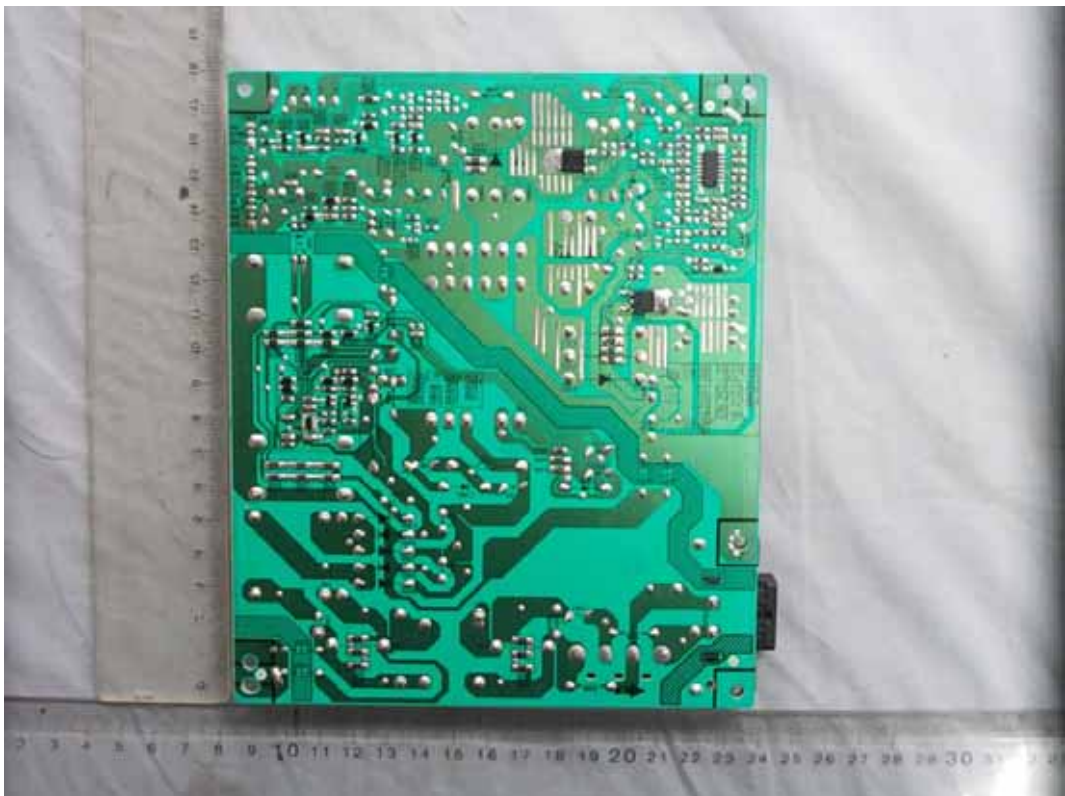


FIGURE 5
LED LCD TV (M/N: 40K20D)
MAIN BOARD (COMPONENT SIDE)

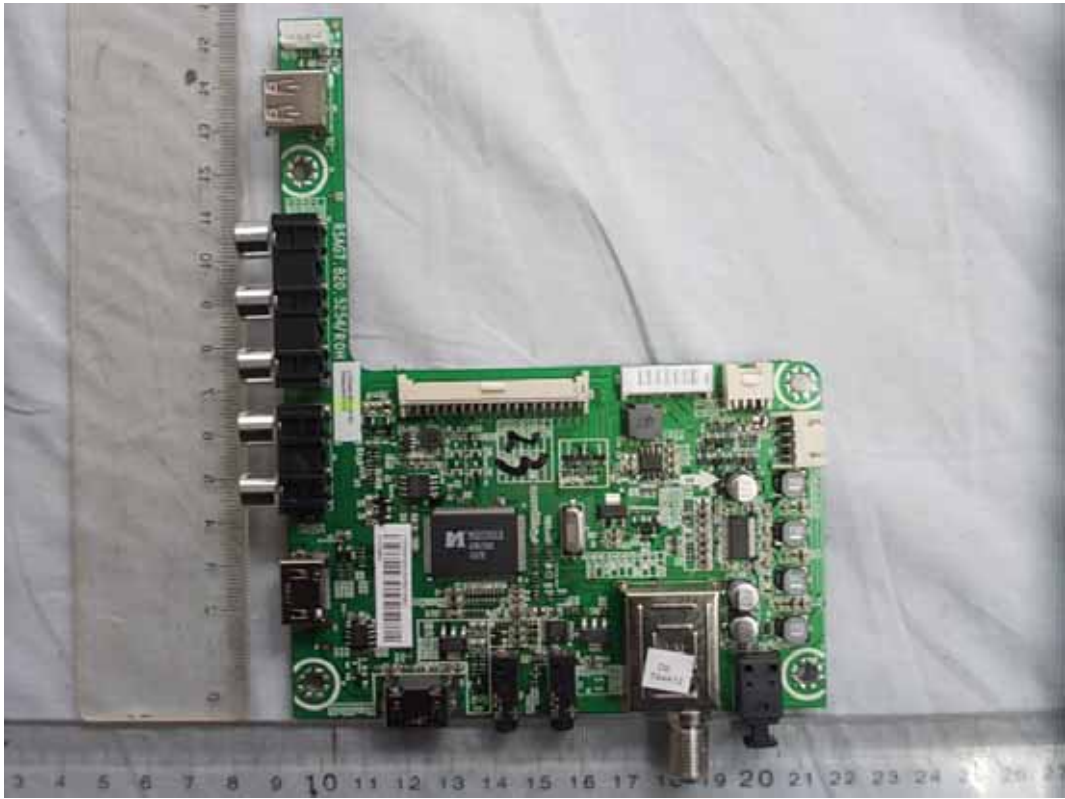


FIGURE 6
LED LCD TV (M/N: 40K20D)
MAIN BOARD (SOLDERED SIDE)



FIGURE 7
LED LCD TV (M/N: 40K20D)
CHIP & CRYSTAL ON MAIN BOARD



FIGURE 8
LED LCD TV (M/N: 40K20D)
TUNER ON MAIN BOARD

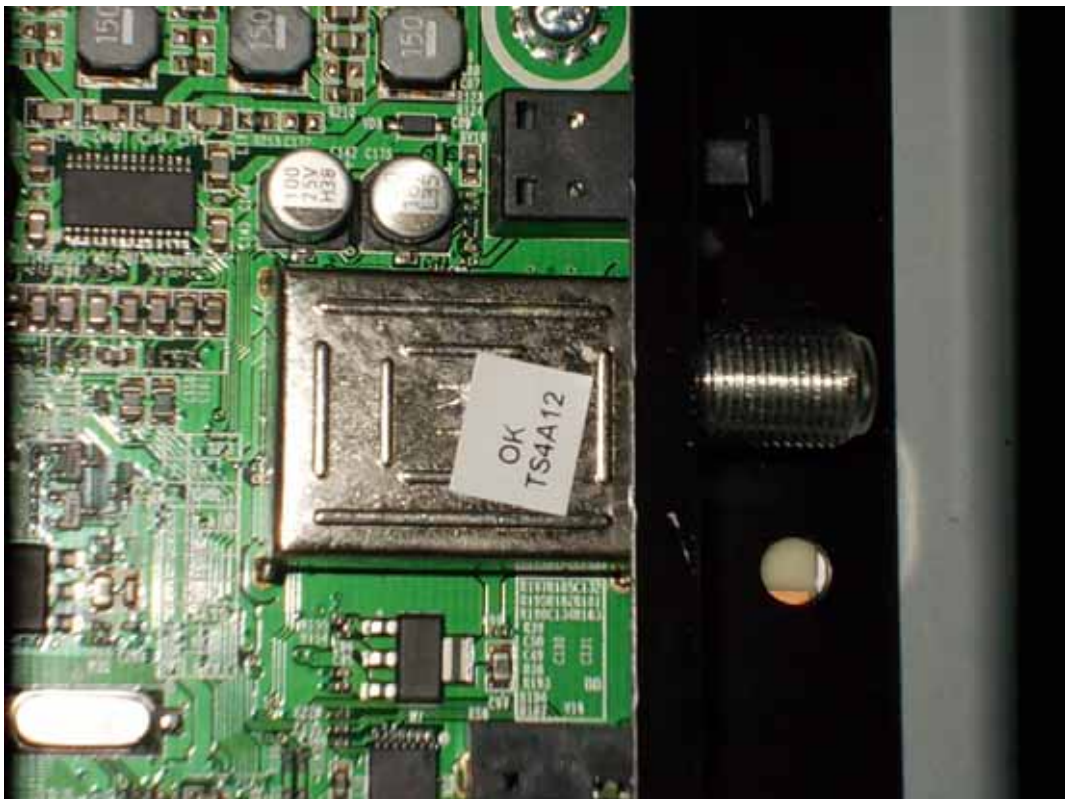


FIGURE 9
LED LCD TV (M/N: 40K20D)
KEY BOARD (COMPONENT SIDE)

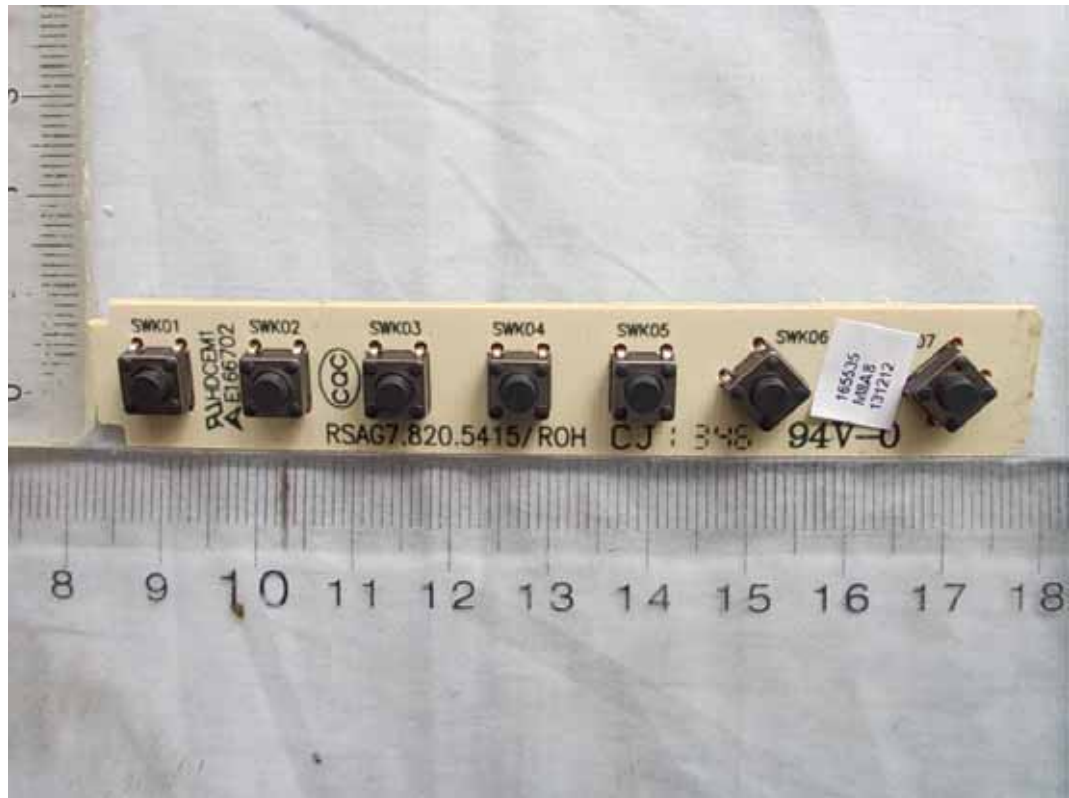


FIGURE 10
LED LCD TV (M/N: 40K20D)
KEY BOARD (SOLDERED SIDE)

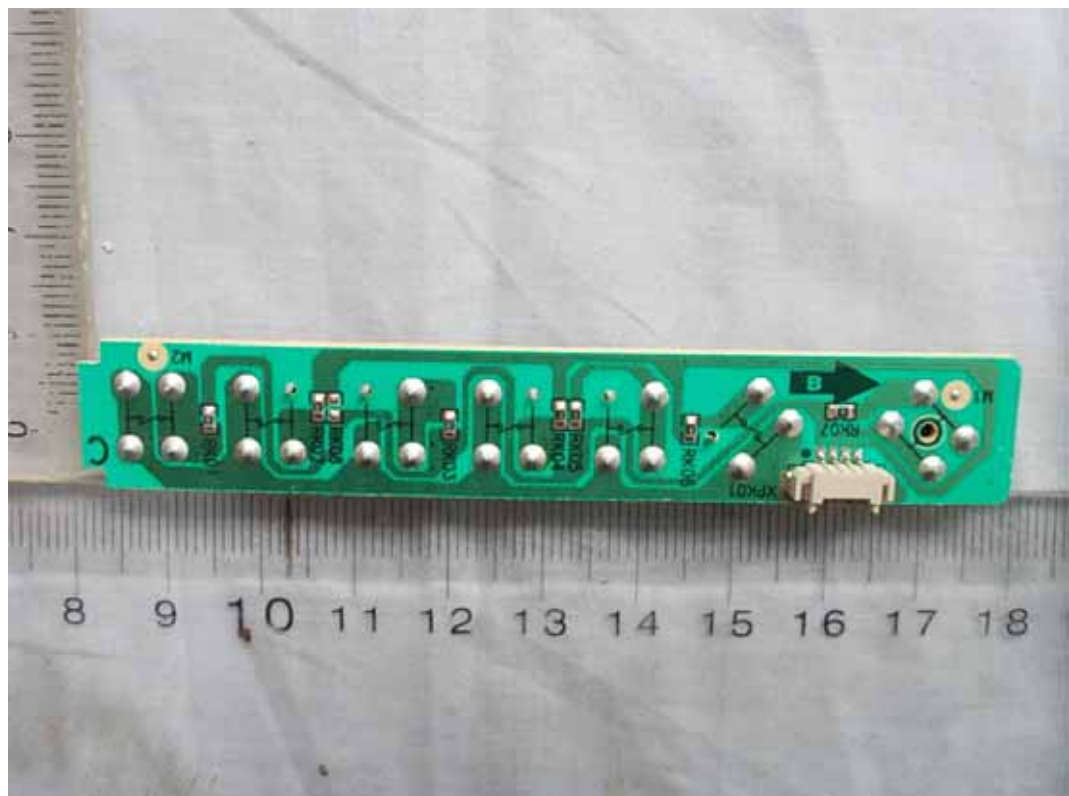


FIGURE 11
LED LCD TV (M/N: 40K20D)
IR BOARD

