

FIGURE 1
LED LCD TV (M/N: LTDN42A300MH)
COVER REMOVED

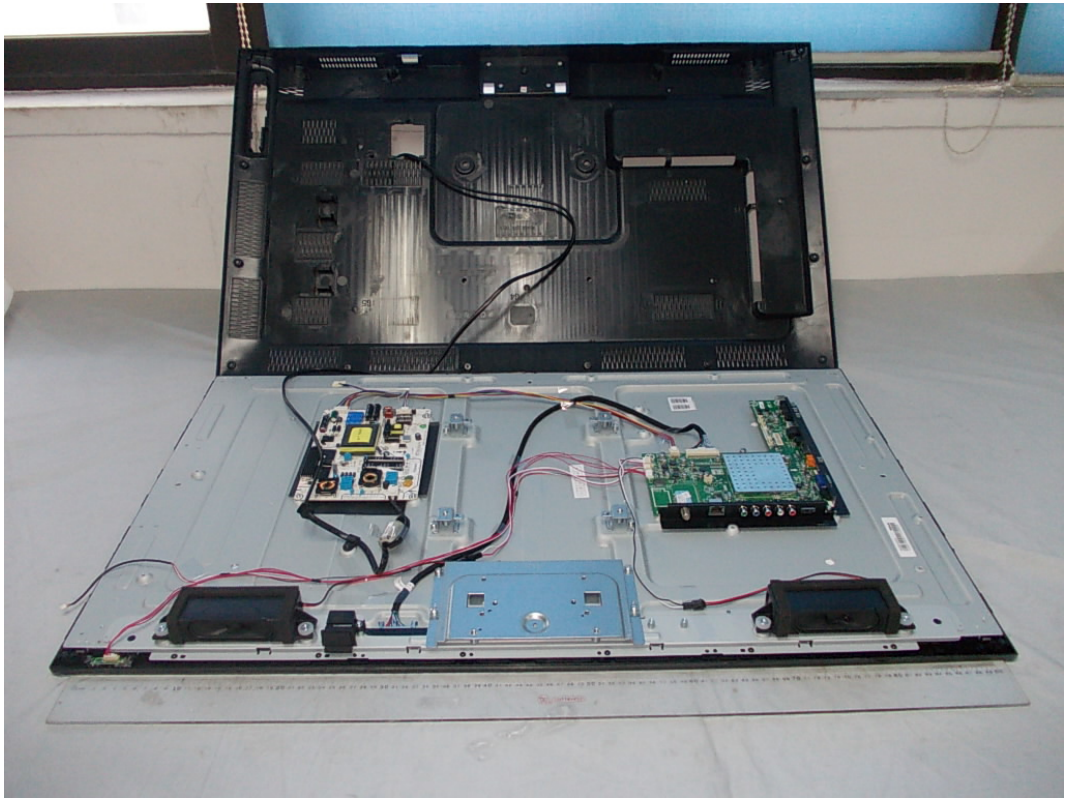


FIGURE 2
LED LCD TV (M/N: LTDN42A300MH)
PANEL LABEL



FIGURE 3
LED LCD TV (M/N: LTDN42A300MH)
POWER BOARD (COMPONENT SIDE)

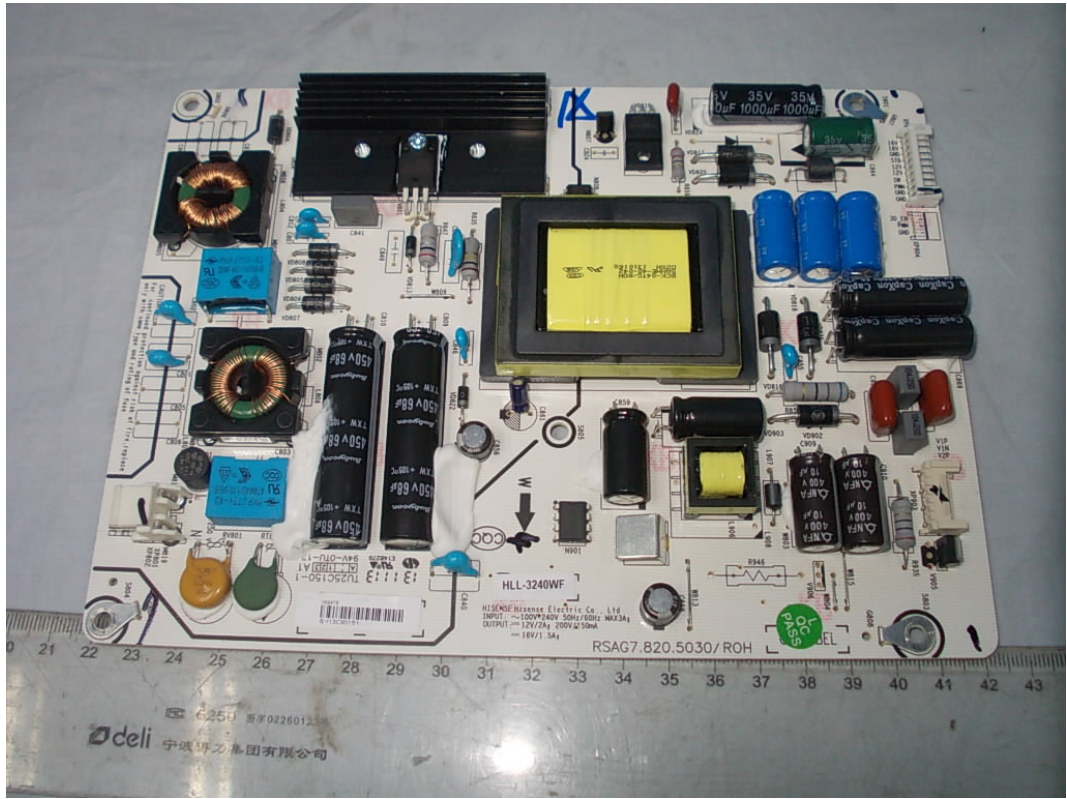


FIGURE 4
LED LCD TV (M/N: LTDN42A300MH)
POWER BOARD (SOLDERED SIDE)

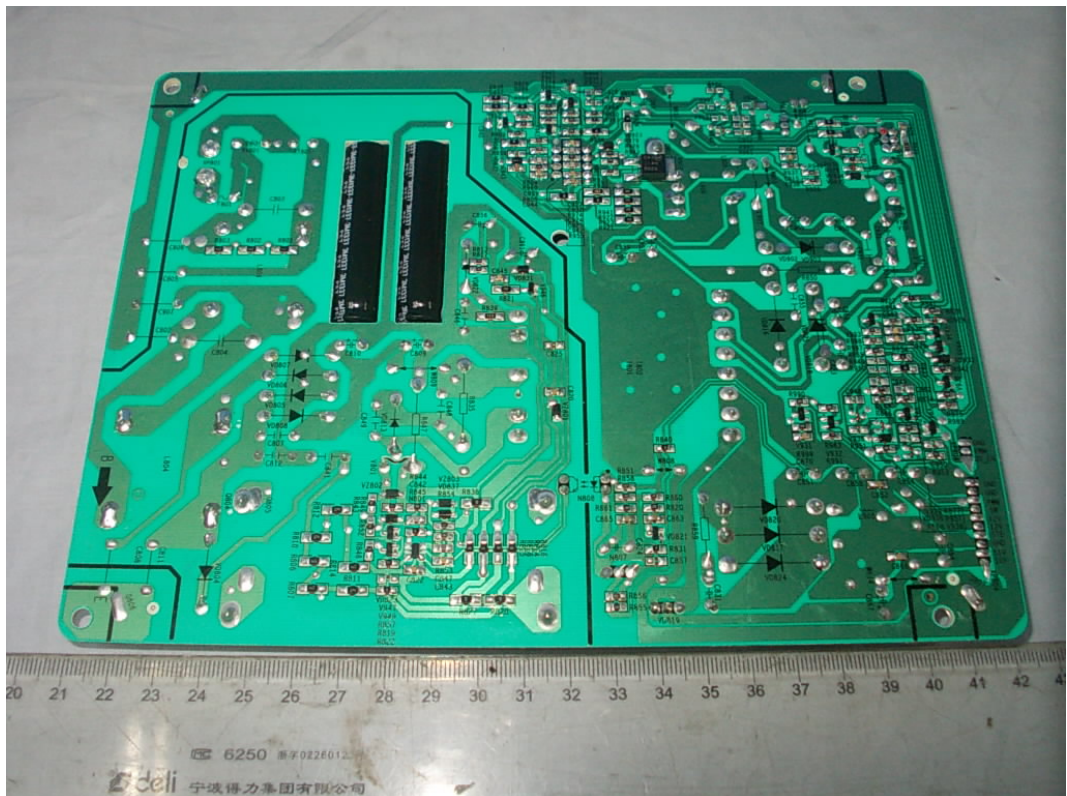


FIGURE 5
LED LCD TV (M/N: LTDN42A300MH)
MAIN BOARD (COMPONENT SIDE)

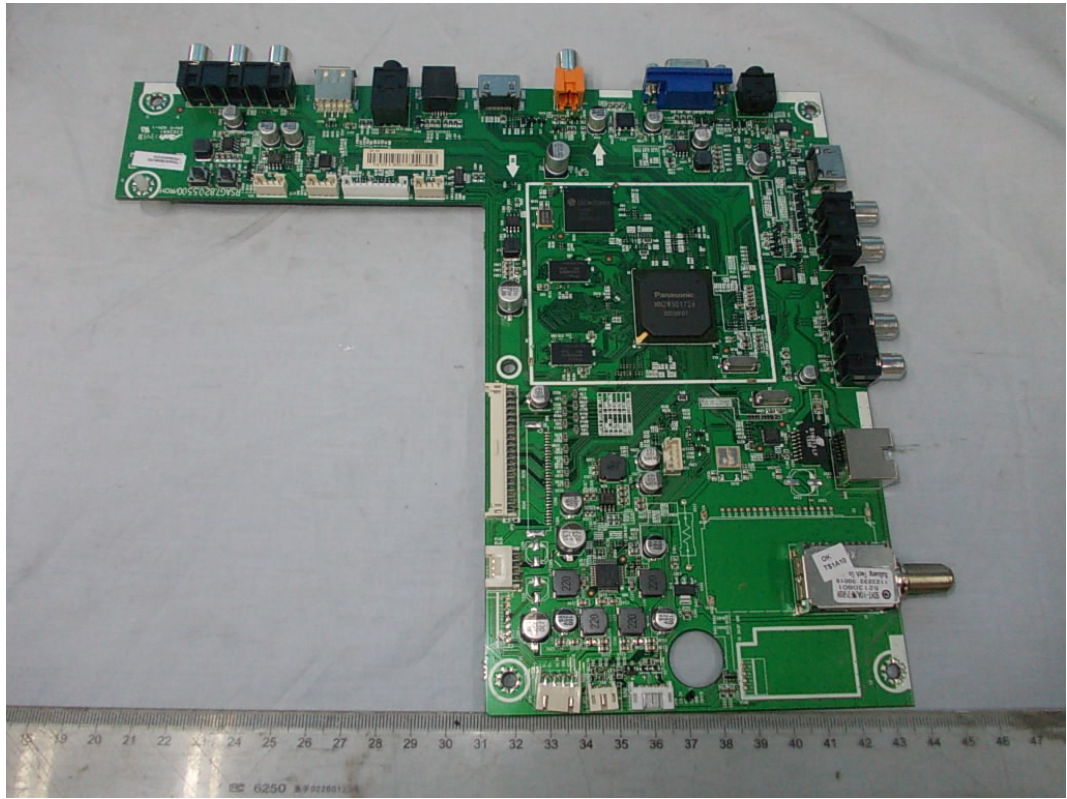


FIGURE 6
LED LCD TV (M/N: LTDN42A300MH)
MAIN BOARD (SOLDERED SIDE)



FIGURE 7
LED LCD TV (M/N: LTDN42A300MH)
TUNER ON MAIN BOARD

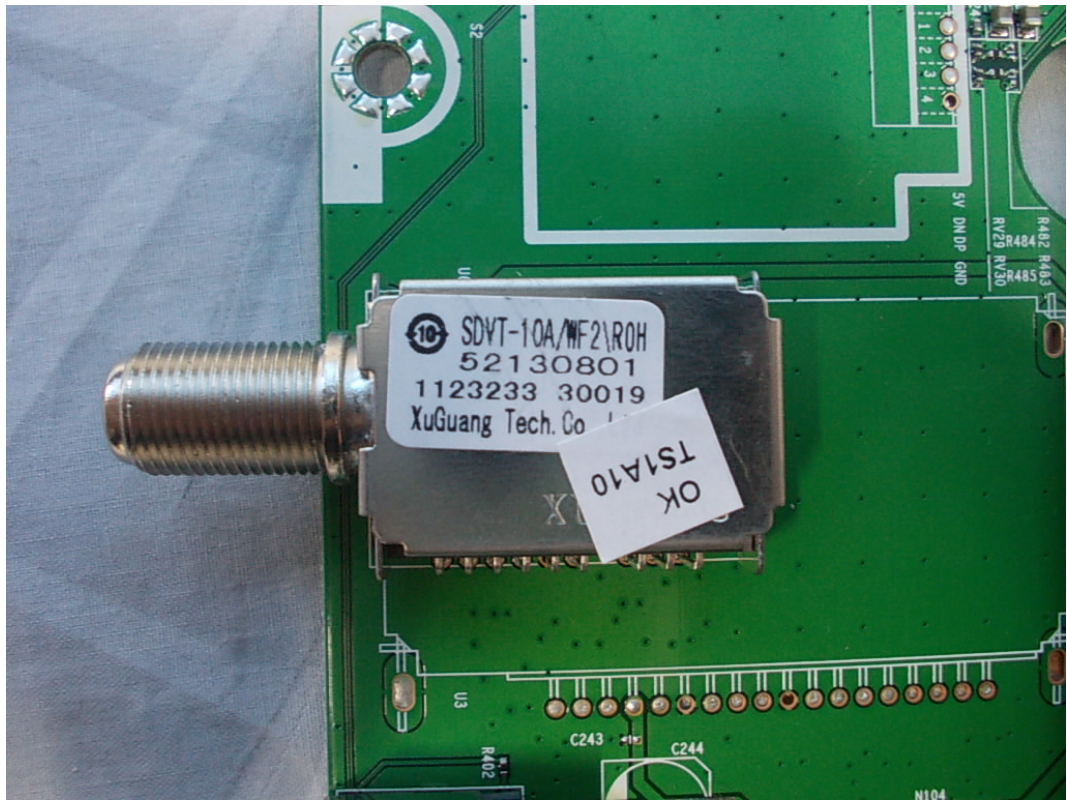


FIGURE 8
LED LCD TV (M/N: LTDN42A300MH)
CRYSTAL #1 & #2 ON MAIN BOARD

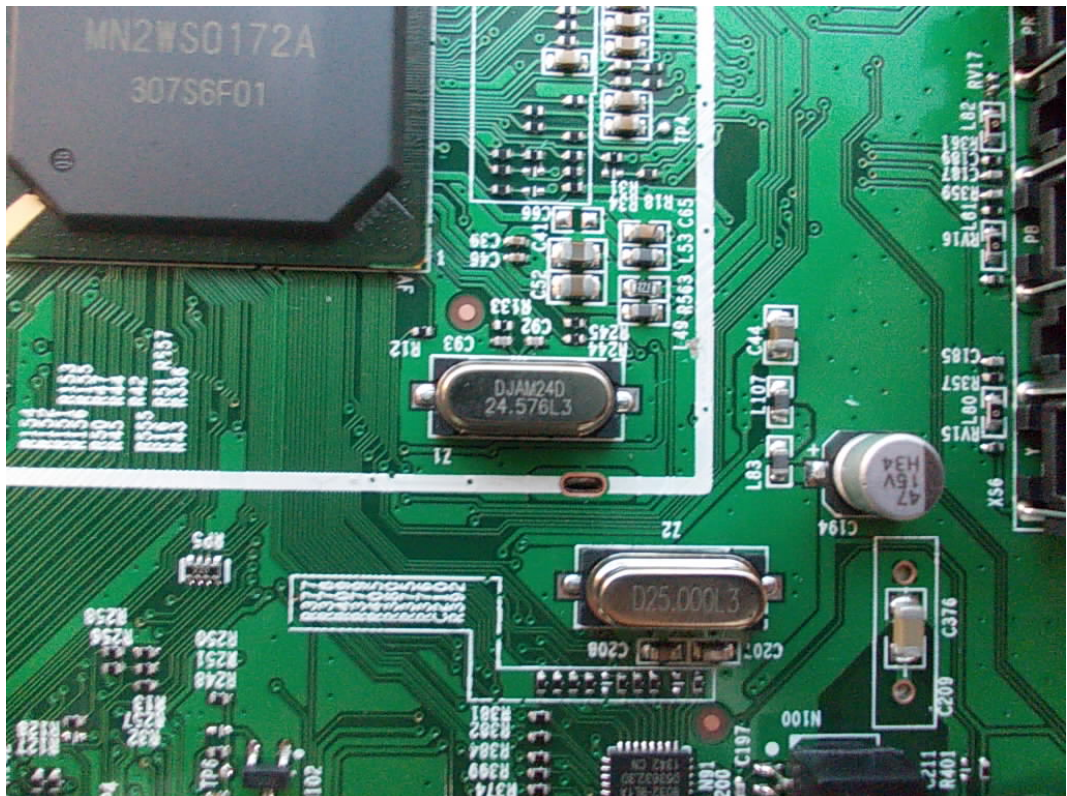


FIGURE 9
LED LCD TV (M/N: LTDN42A300MH)
CHIP ON MAIN BOARD

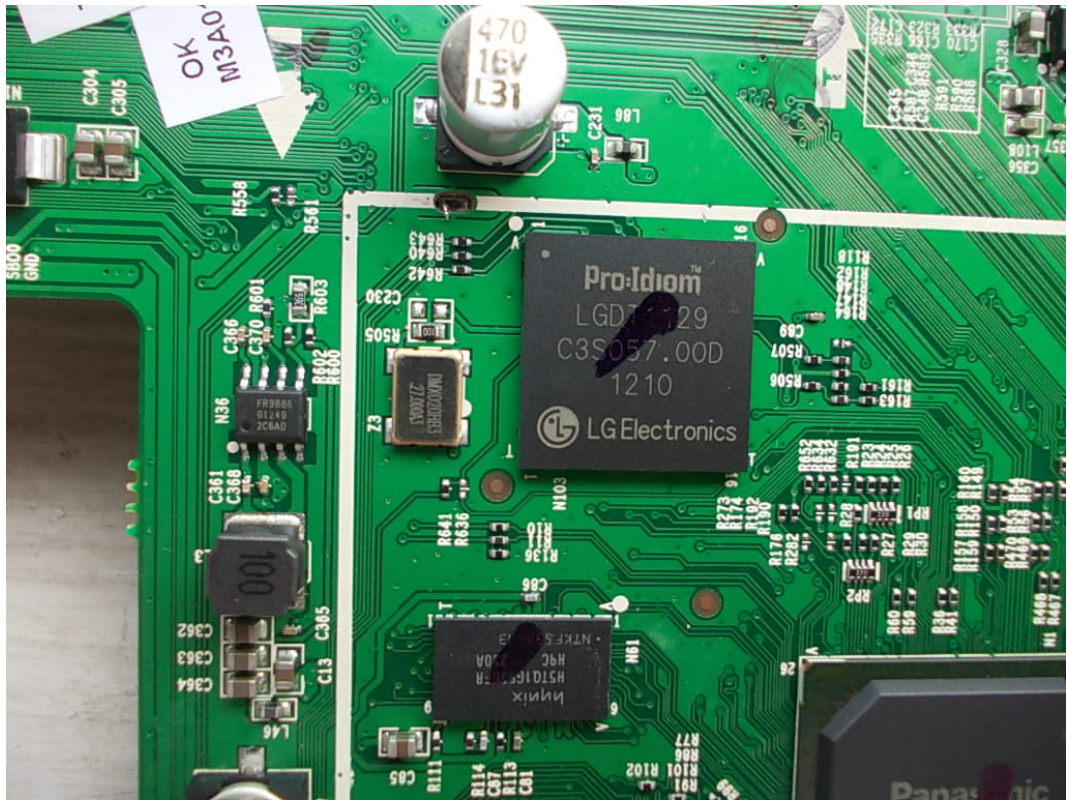


FIGURE 10
LED LCD TV (M/N: LTDN42A300MH)
CHIP & CRYSTAL #3 ON MAIN BOARD



FIGURE 11
LED LCD TV (M/N: LTDN42A300MH)
KEY BOARD (COMPONENT SIDE)

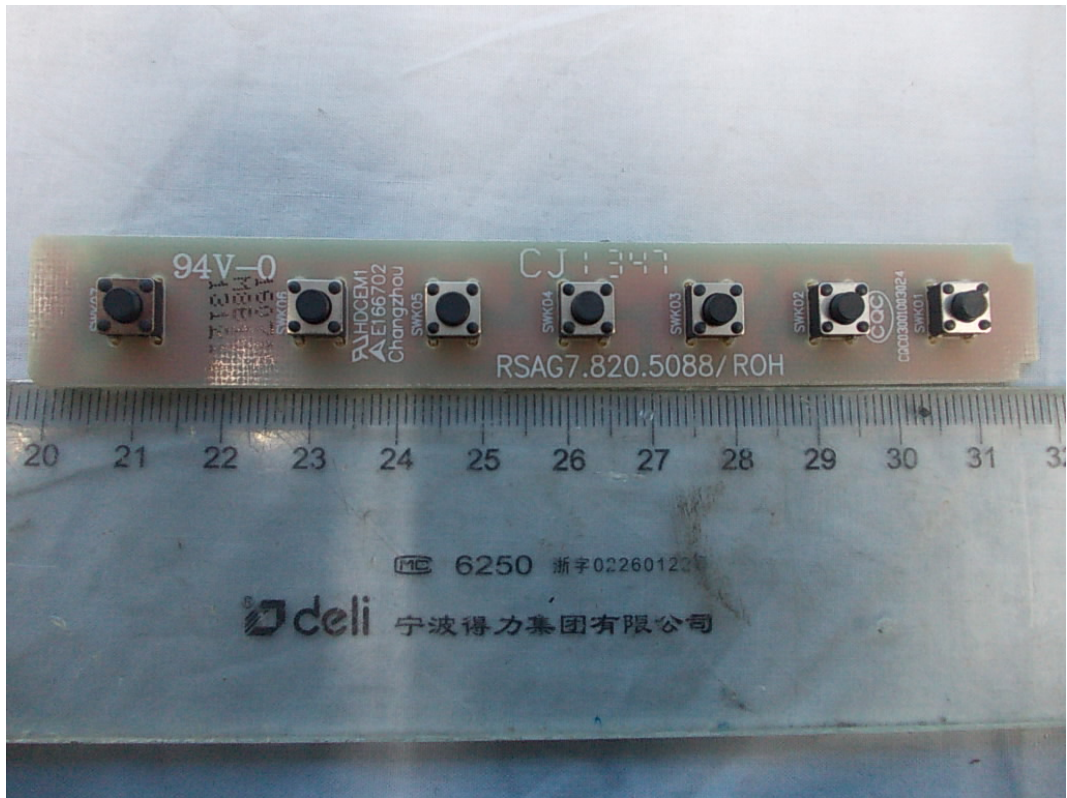


FIGURE 12
LED LCD TV (M/N: LTDN42A300MH)
KEY BOARD (SOLDERED SIDE)



FIGURE 13
LED LCD TV (M/N: LTDN42A300MH)
IR BOARD (COMPONENT SIDE)

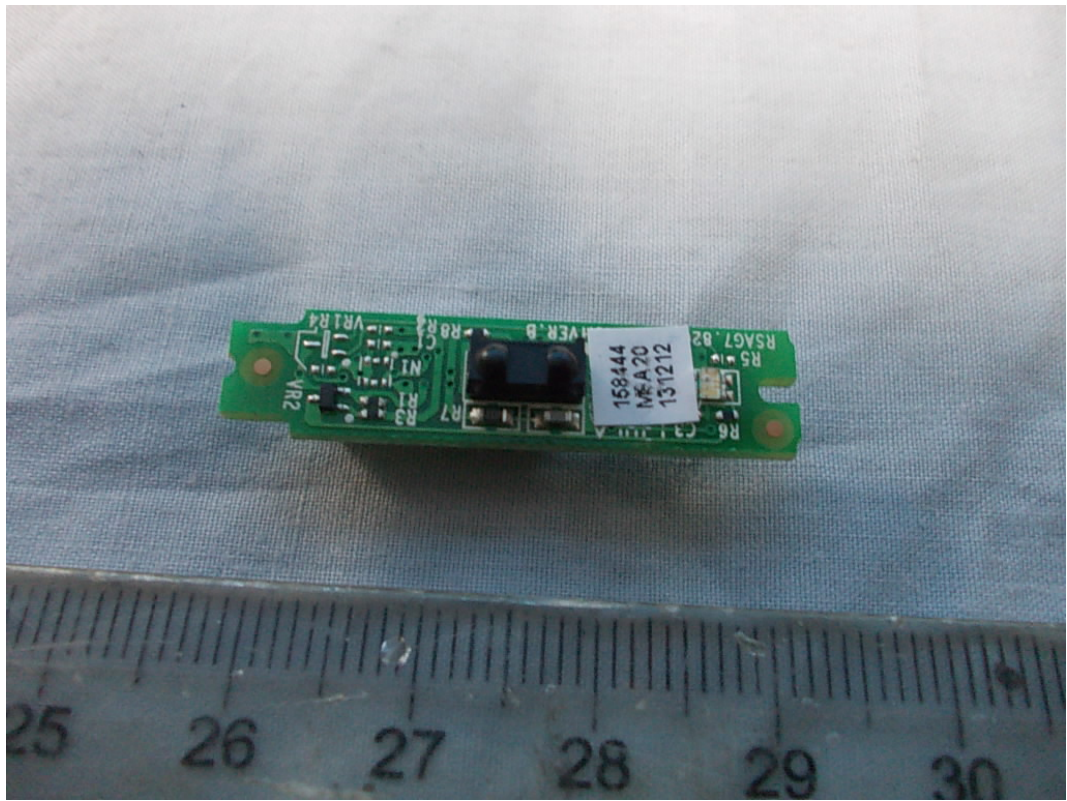


FIGURE 14
LED LCD TV (M/N: LTDN42A300MH)
IR BOARD (SOLDERED SIDE)

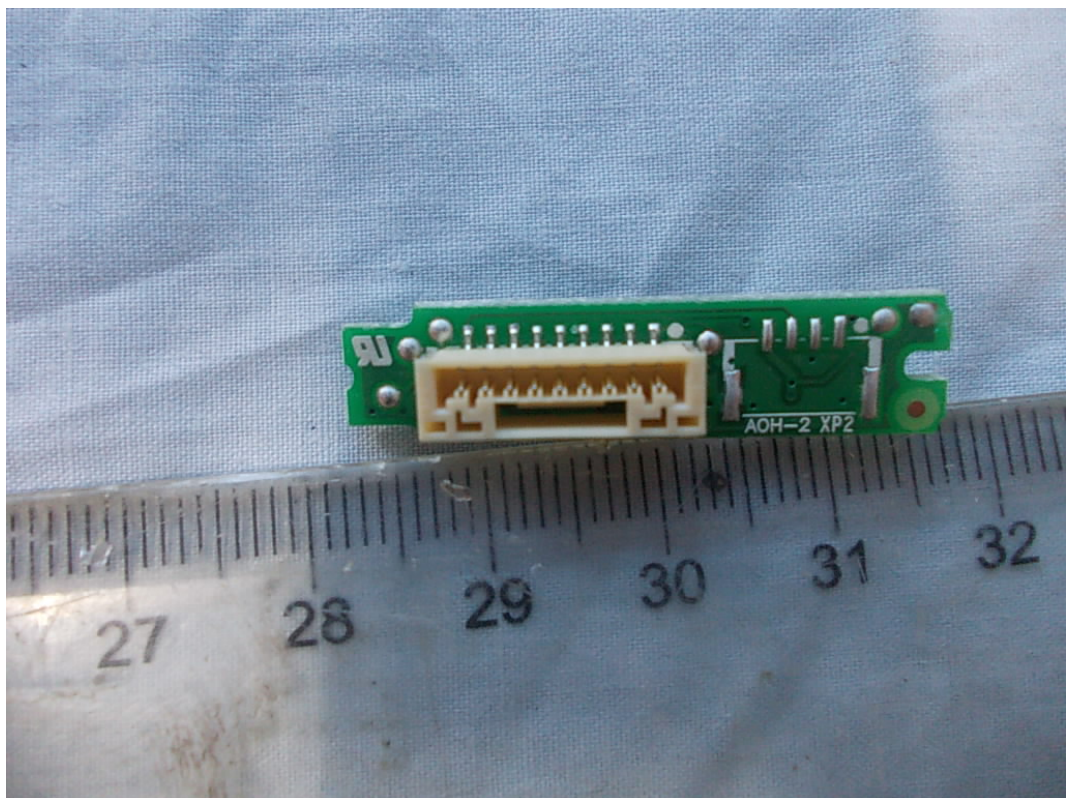


FIGURE 15
LED LCD TV (M/N: LTDN42A300MH)
DEBUG

