

FIGURE 1
LED LCD TV (M/N: LTDN39V77NUS)
COVER REMOVED



FIGURE 2
LED LCD TV (M/N: LTDN39V77NUS)
PANEL LABEL



FIGURE 3
LED LCD TV (M/N: LTDN39V77NUS)
POWER BOARD (COMPONENT SIDE)



FIGURE 4
LED LCD TV (M/N: LTDN39V77NUS)
POWER BOARD (SOLDERED SIDE)



FIGURE 5
LED LCD TV (M/N: LTDN39V77NUS)
MAIN BOARD (COMPONENT SIDE)



FIGURE 6
LED LCD TV (M/N: LTDN39V77NUS)
MAIN BOARD (SOLDERED SIDE)

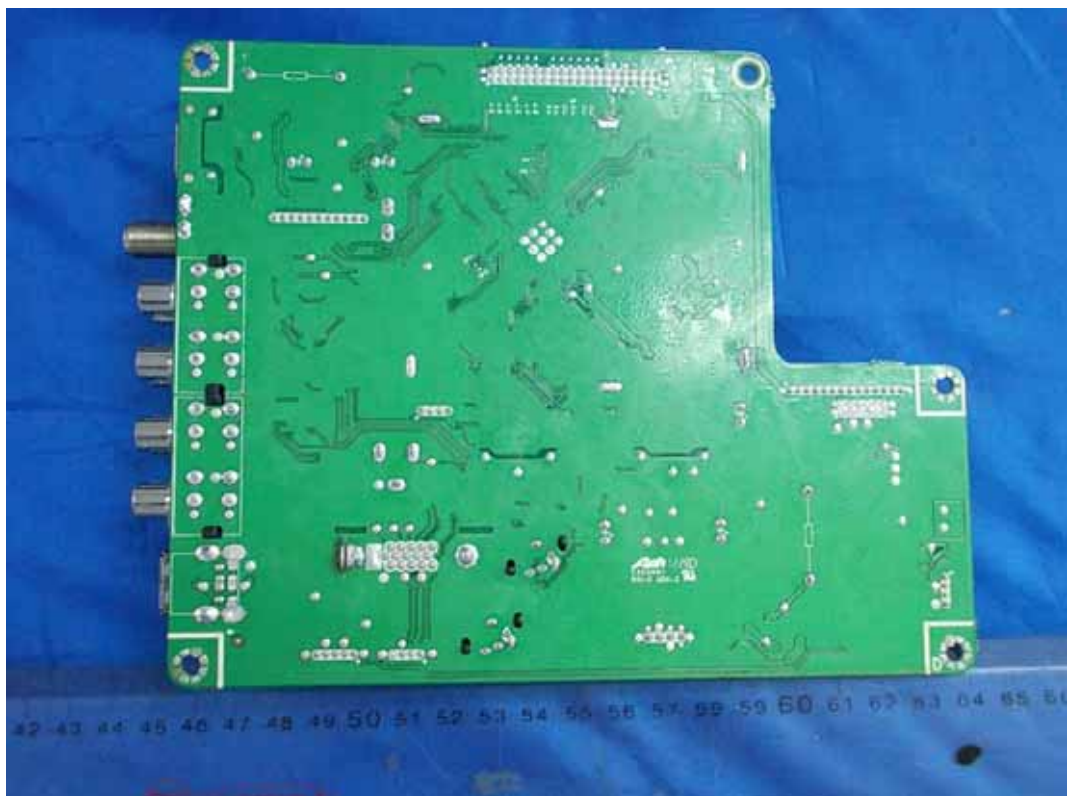


FIGURE 7
LED LCD TV (M/N: LTDN39V77NUS)
TUNER ON MAIN BOARD



FIGURE 8
LED LCD TV (M/N: LTDN39V77NUS)
CHIP ON MAIN BOARD



FIGURE 9
LED LCD TV (M/N: LTDN39V77NUS)
CRYSTAL ON MAIN BOARD

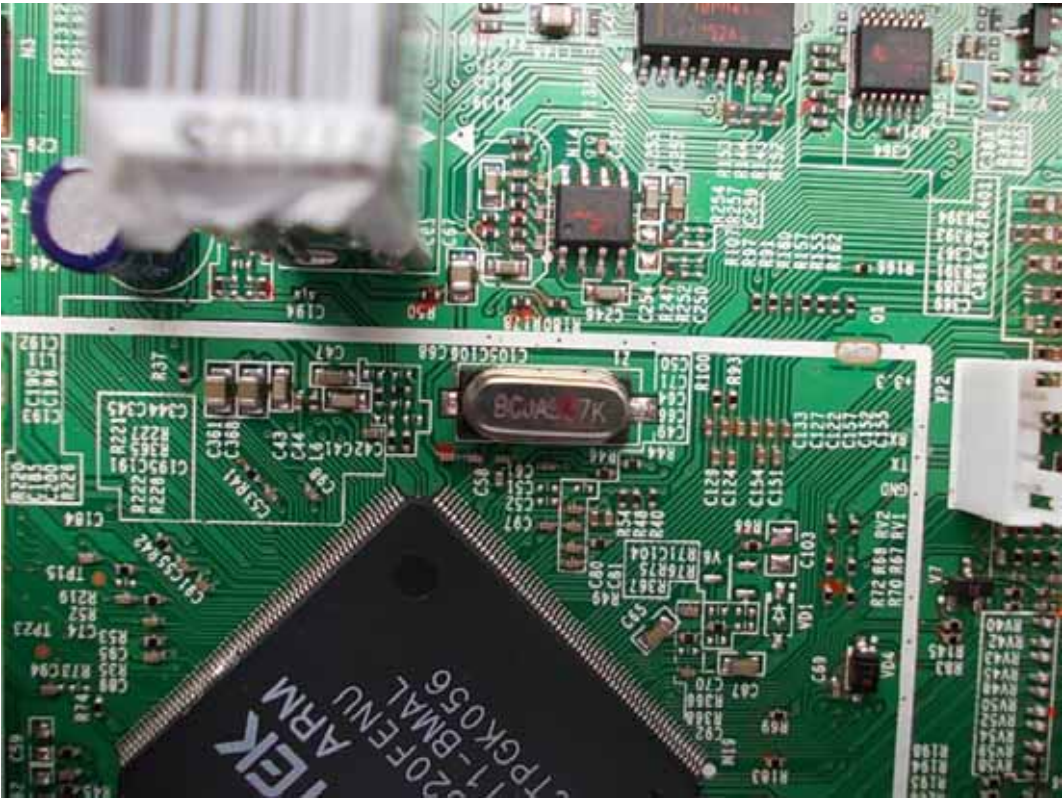


FIGURE 10
LED LCD TV (M/N: LTDN39V77NUS)
KEY BOARD (COMPONENT SIDE)



FIGURE 11
LED LCD TV (M/N: LTDN39V77NUS)
KEY BOARD (SOLDERED SIDE)



FIGURE 12
LED LCD TV (M/N: LTDN39V77NUS)
IR BOARD (COMPONENT SIDE)

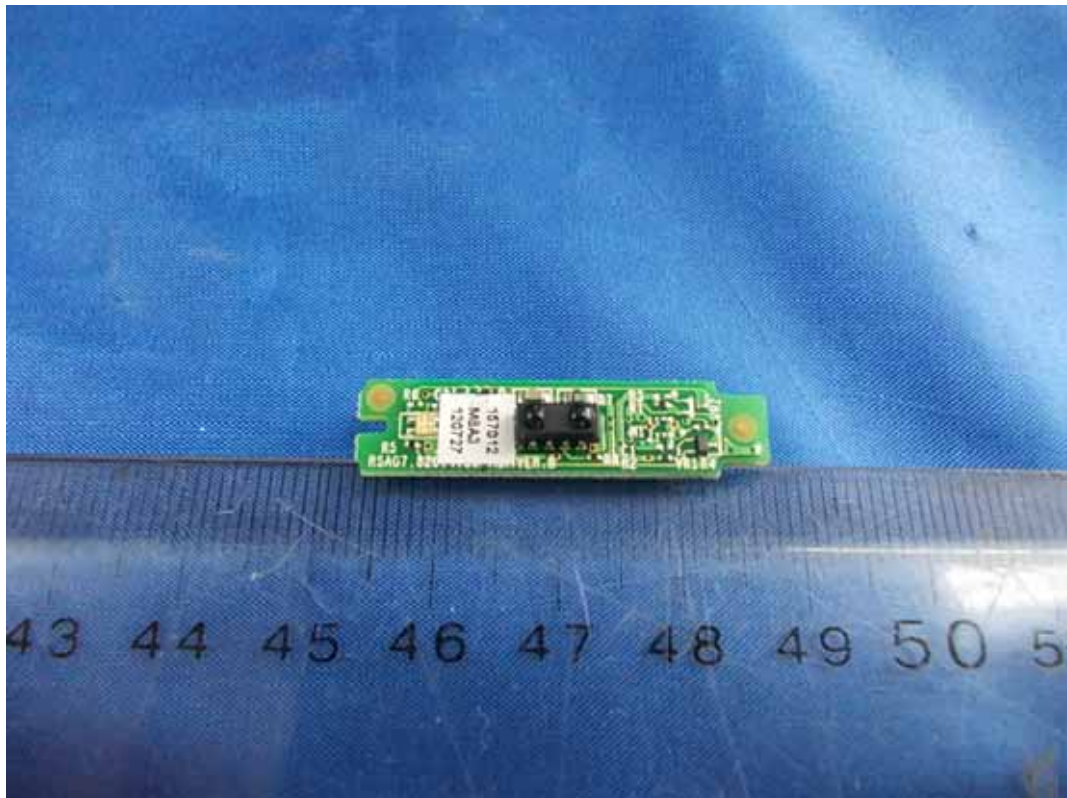


FIGURE 13
LED LCD TV (M/N: LTDN39V77NUS)
IR BOARD (SOLDERED SIDE)



FIGURE 14
LED LCD TV (M/N: LTDN39V77NUS)
DEBUG 1



FIGURE 15
LED LCD TV (M/N: LTDN39V77NUS)
DEBUG 2

