

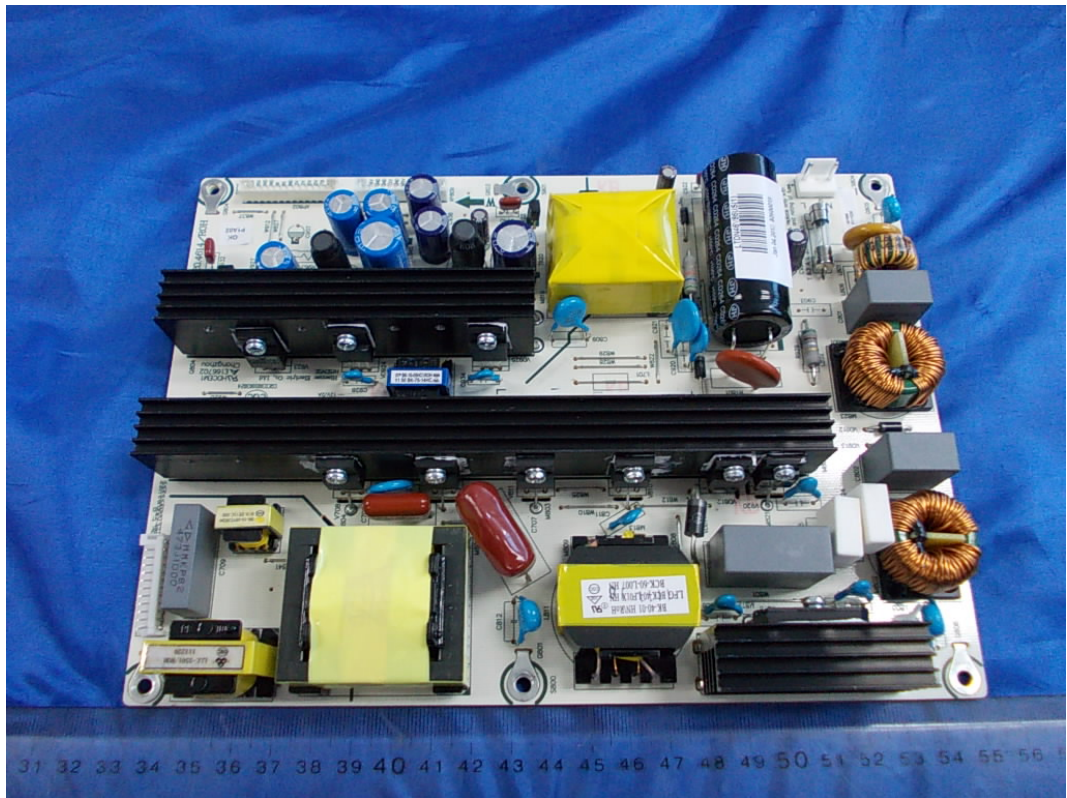
FIGURE 1  
LCD TV (M/N: LTDN46V86US)  
COVER REMOVED



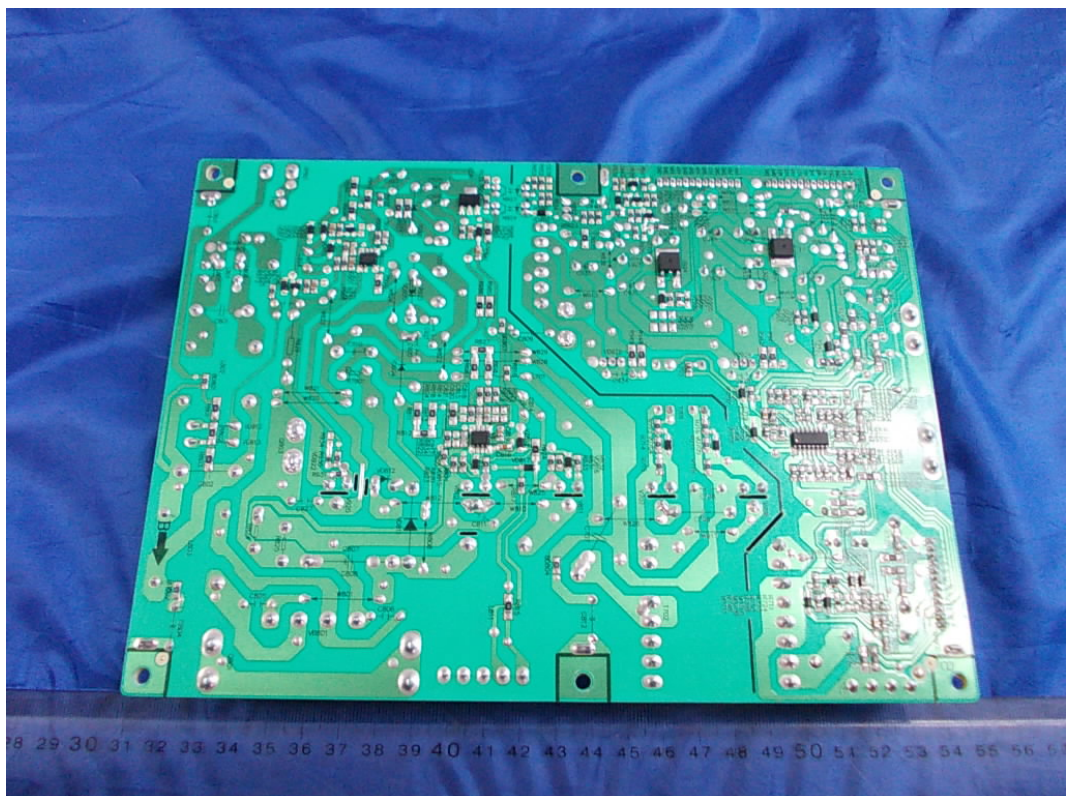
FIGURE 2  
LCD TV (M/N: LTDN46V86US)  
PANEL LABEL



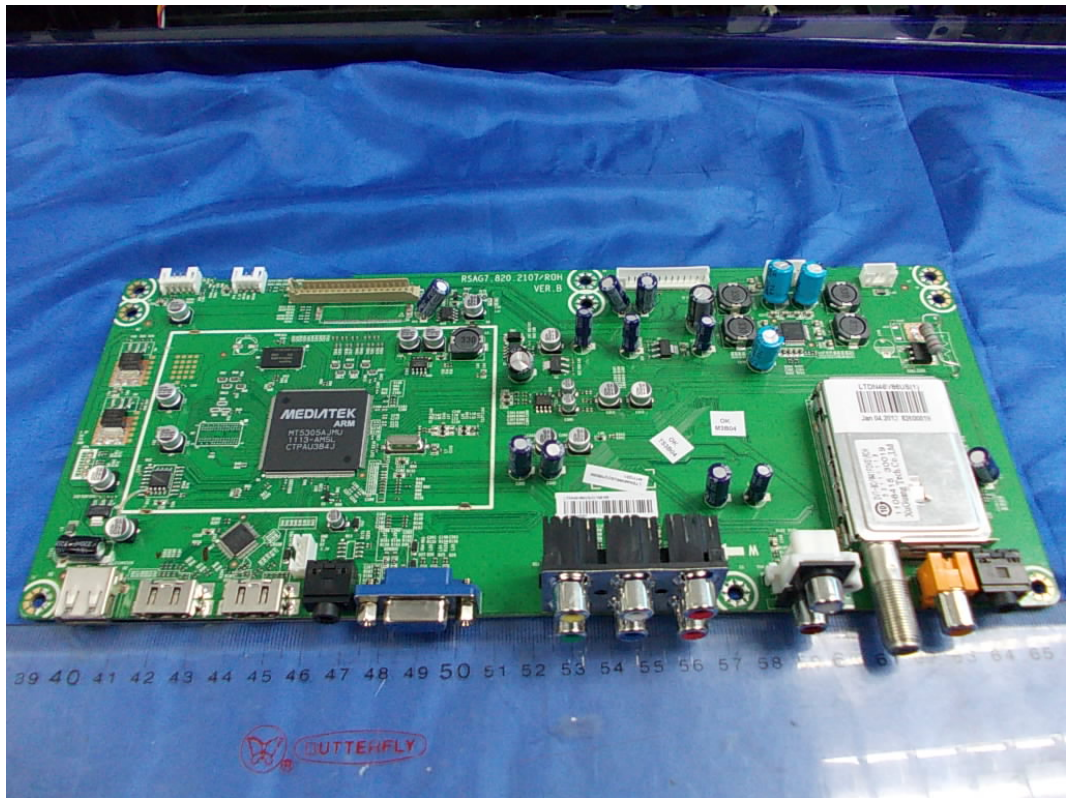
*FIGURE 3*  
*LCD TV (M/N: LTDN46V86US)*  
*POWER BOARD (COMPONENT SIDE)*



*FIGURE 4*  
*LCD TV (M/N: LTDN46V86US)*  
*POWER BOARD (SOLDERED SIDE)*



*FIGURE 5*  
*LCD TV (M/N: LTDN46V86US)*  
*MAIN BOARD (COMPONENT SIDE)*



*FIGURE 6*  
*LCD TV (M/N: LTDN46V86US)*  
*MAIN BOARD (SOLDERED SIDE)*

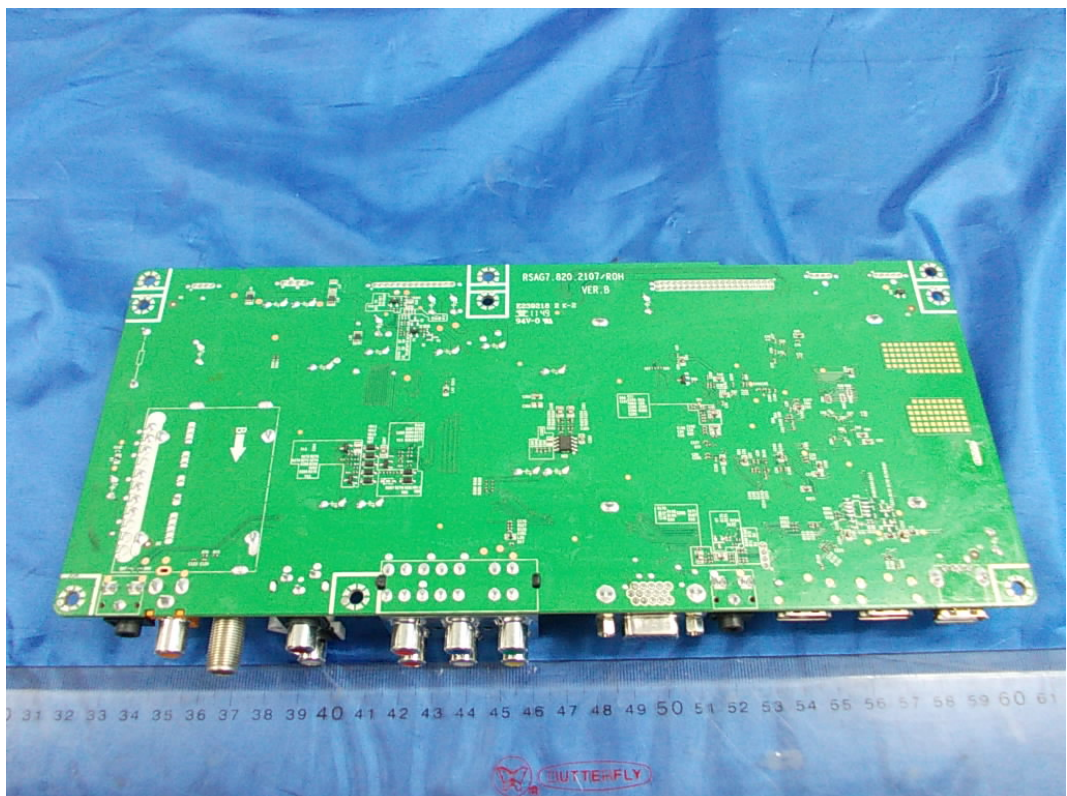


FIGURE 7  
LCD TV (M/N: LTDN46V86US)  
TUNER ON MAIN BOARD



FIGURE 8  
LCD TV (M/N: LTDN46V86US)  
CHIP & CRYSTAL ON MAIN BOARD

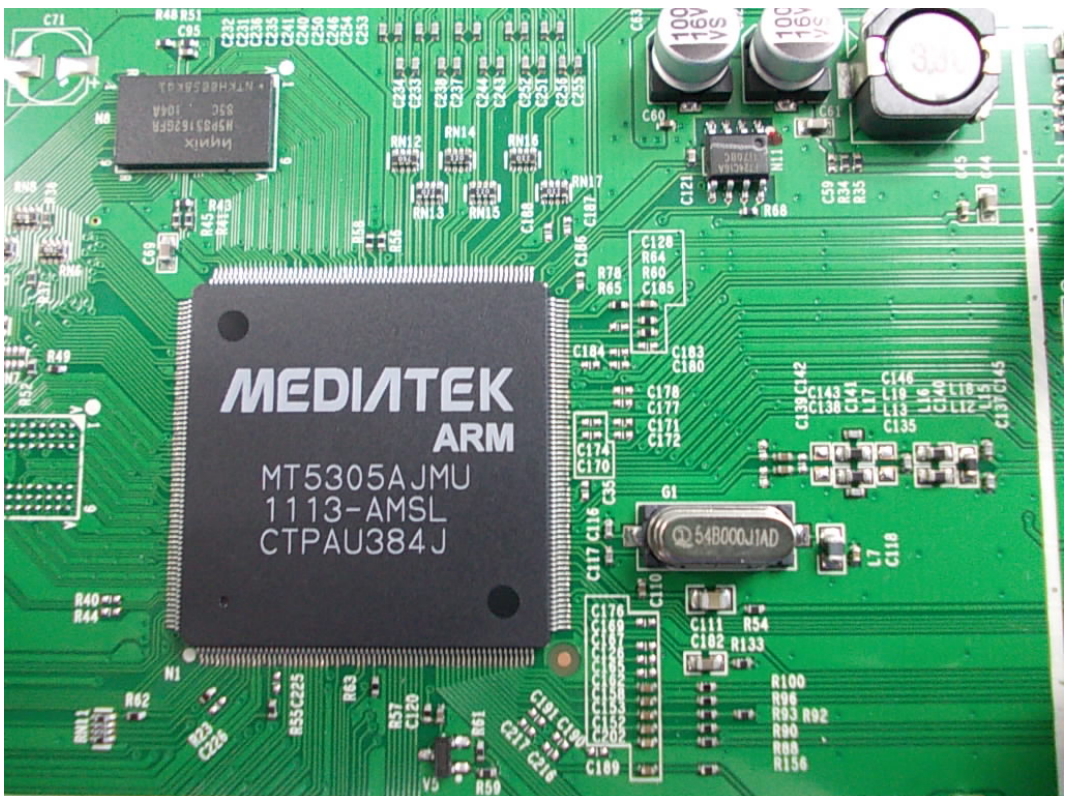


FIGURE 9  
LCD TV (M/N: LTDN46V86US)  
KEY BOARD (COMPONENT SIDE)

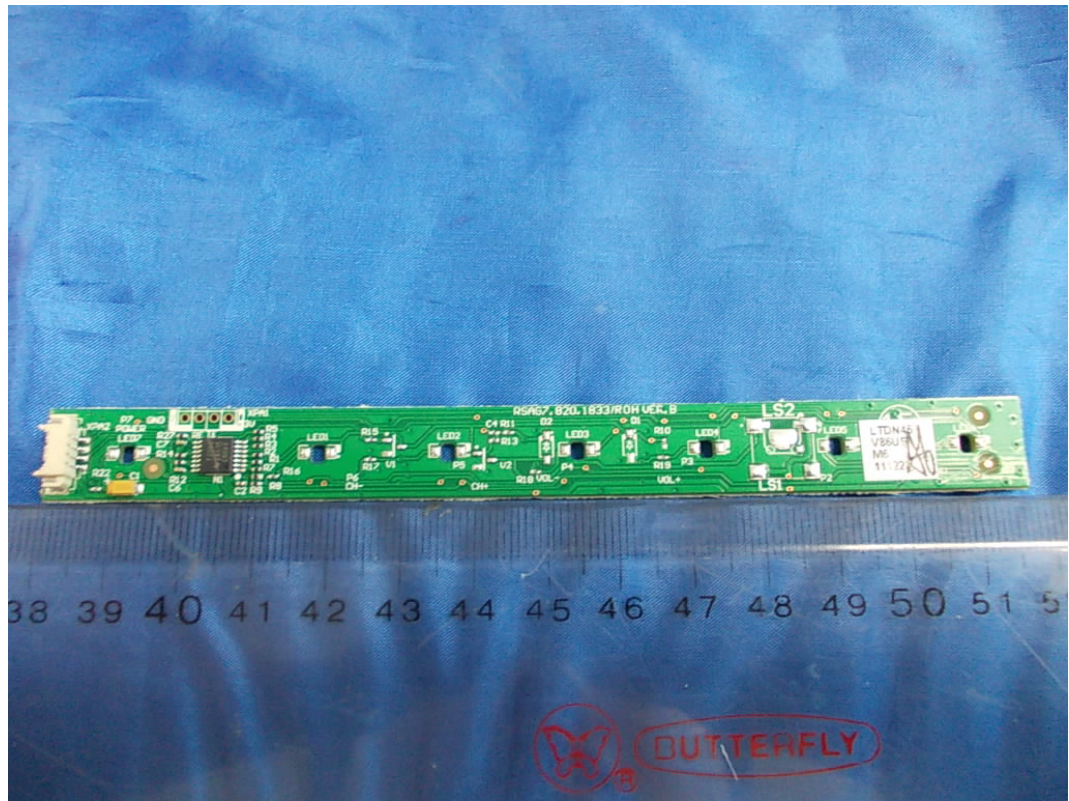


FIGURE 10  
LCD TV (M/N: LTDN46V86US)  
KEY BOARD (SOLDERED SIDE)

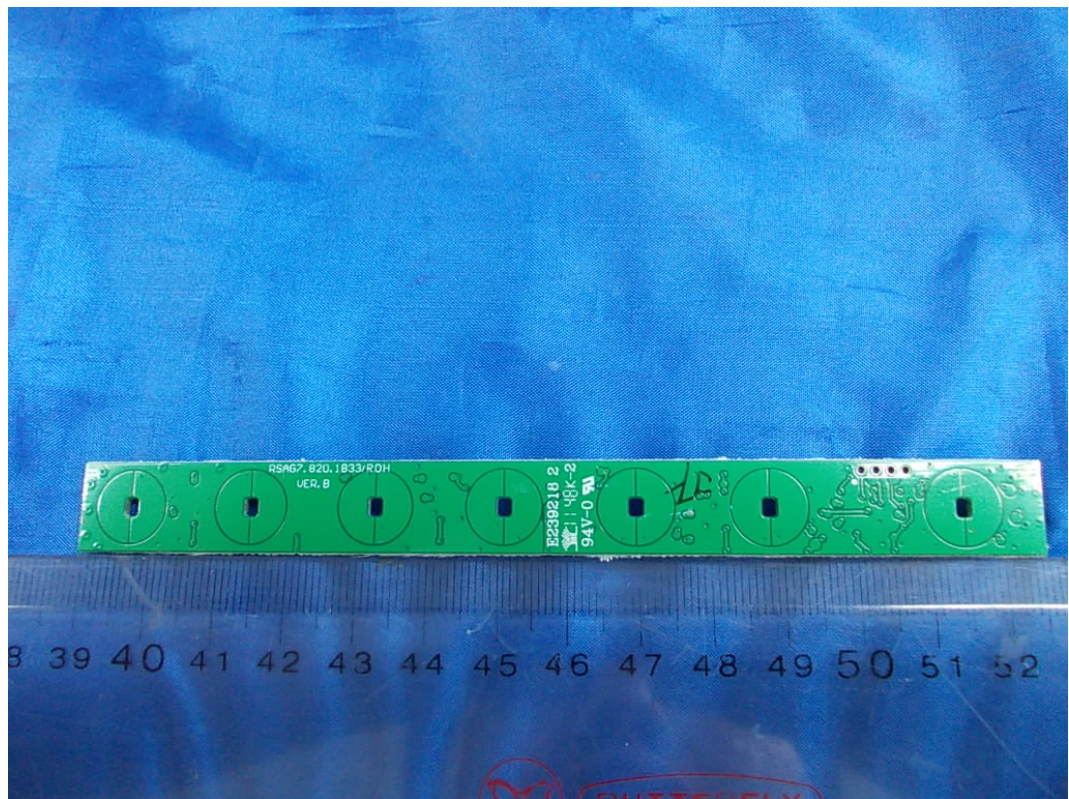


FIGURE 11  
LCD TV (M/N: LTDN46V86US)  
IR BOARD (COMPONENT SIDE)

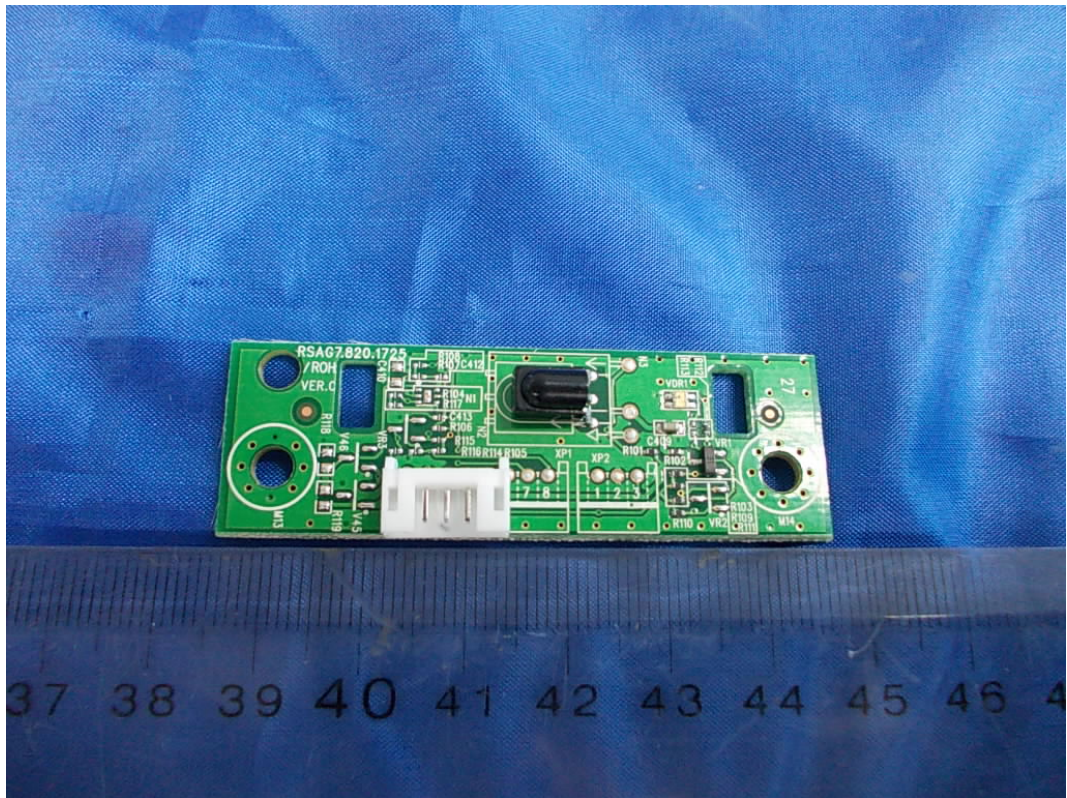


FIGURE 12  
LCD TV (M/N: LTDN46V86US)  
IR BOARD (SOLDERED SIDE)

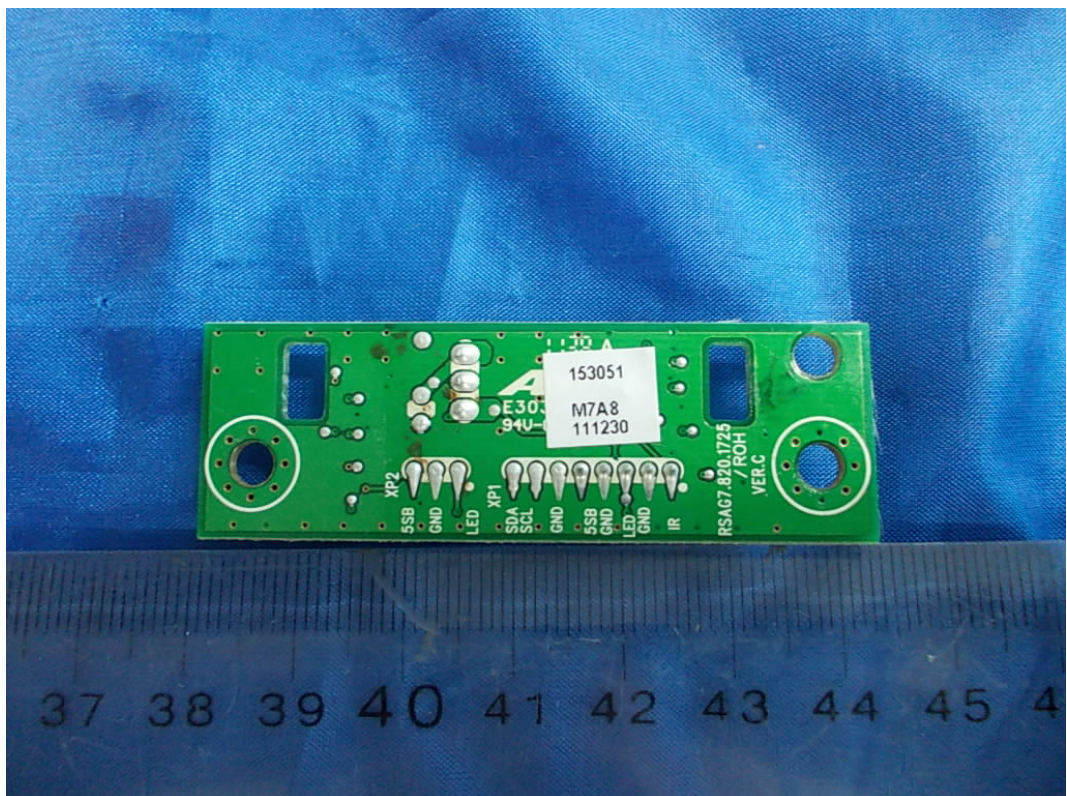


FIGURE 13  
LCD TV (M/N: LTDN46V86US)  
DEBUG 1

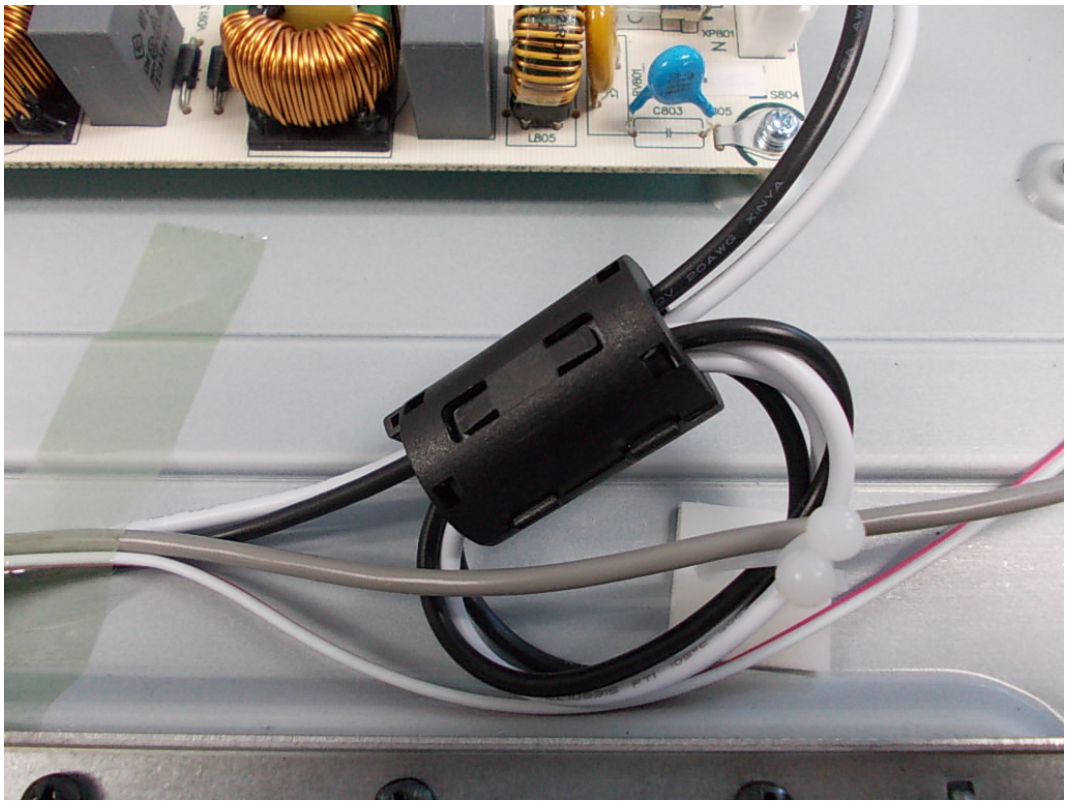


FIGURE 14  
LCD TV (M/N: LTDN46V86US)  
DEBUG 2

