

*FIGURE 1*  
*LCD TV (M/N: LTDN42V77KMH)*  
*COVER REMOVED*



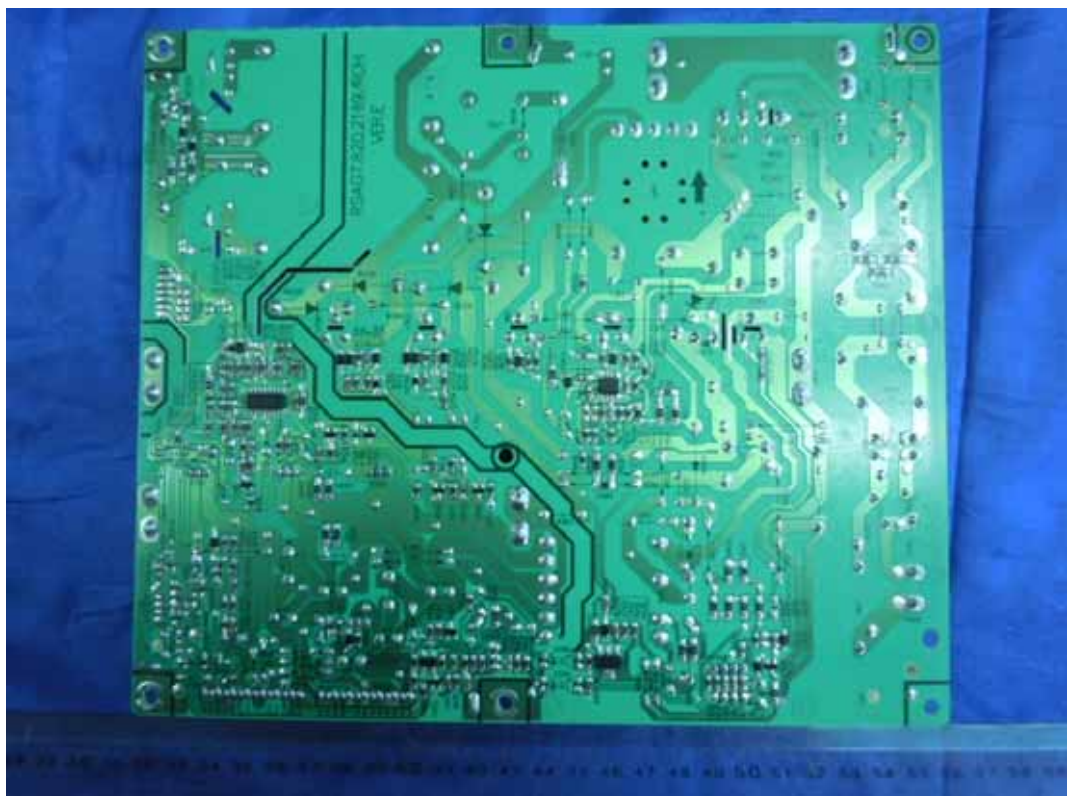
*FIGURE 2*  
*LCD TV (M/N: LTDN42V77KMH)*  
*PANEL LABEL*



*FIGURE 3*  
*LCD TV (M/N: LTDN42V77KMH)*  
*POWER BOARD (COMPONENT SIDE)*



*FIGURE 4*  
*LCD TV (M/N: LTDN42V77KMH)*  
*POWER BOARD (SOLDERED SIDE)*



*FIGURE 5*  
*LCD TV (M/N: LTDN42V77KMH)*  
*MAIN BOARD (COMPONENT SIDE)*



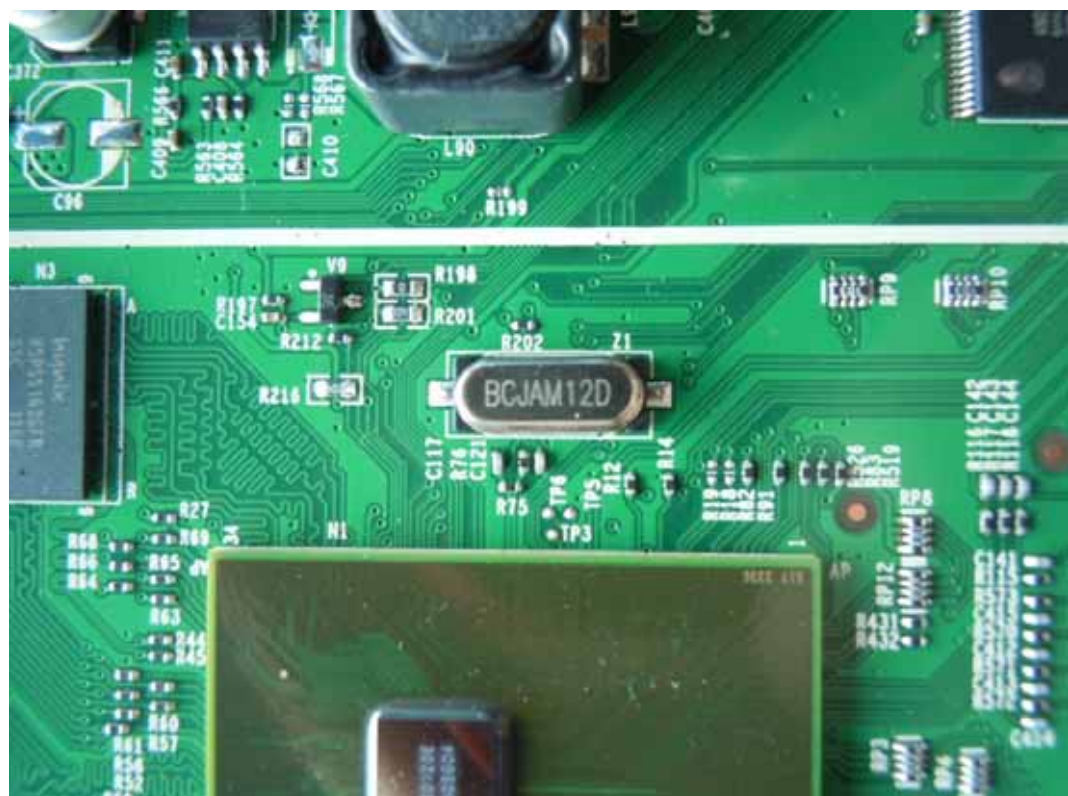
*FIGURE 6*  
*LCD TV (M/N: LTDN42V77KMH)*  
*MAIN BOARD (SOLDERED SIDE)*



FIGURE 7  
LCD TV (M/N: LTDN42V77KMH)  
TUNER ON MAIN BOARD



FIGURE 8  
LCD TV (M/N: LTDN42V77KMH)  
CHIP #1 & CRYSTAL #1 ON MAIN BOARD





A close-up photograph of a green printed circuit board (PCB) featuring a quartz crystal oscillator. The crystal, labeled 'HiTONE 27.000MHz', is mounted on the board and is surrounded by various electronic components and labels. To the left of the crystal is a small component labeled 'RP10'. Below the crystal is a larger component labeled 'N25'. To the right of the crystal are components labeled 'C418', 'R588', and 'C417'. Above the crystal is a component labeled 'Z3'. To the left of the crystal are components labeled 'C142', 'C143', 'C144', 'C141', 'R115', and 'R573'. Above the crystal is a component labeled 'R108'. To the left of the crystal is a component labeled 'RP8'. A white ribbon cable is connected to the board, and a small gold-colored component is visible on the right side of the board.

FIGURE 13  
LCD TV (M/N: LTDN42V77KMH)  
KEY BOARD (COMPONENT SIDE)



FIGURE 14  
LCD TV (M/N: LTDN42V77KMH)  
KEY BOARD (SOLDERED SIDE)

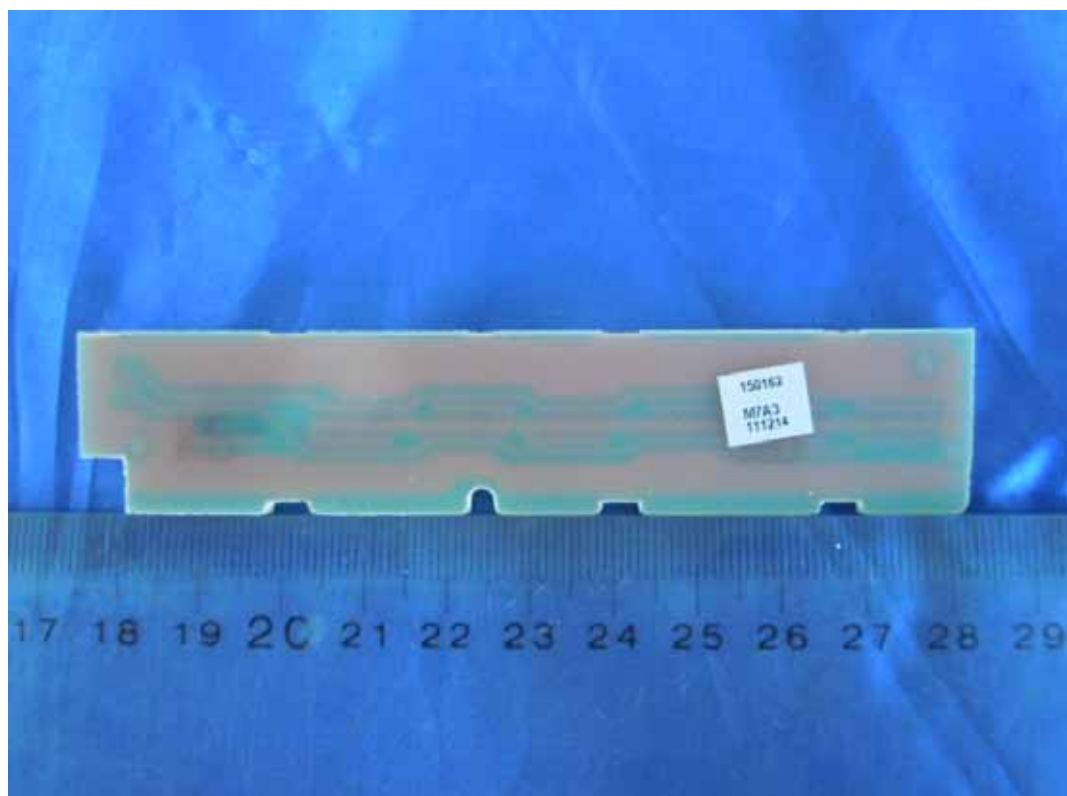


FIGURE 15  
LCD TV (M/N: LTDN42V77KMH)  
IR BOARD (COMPONENT SIDE)

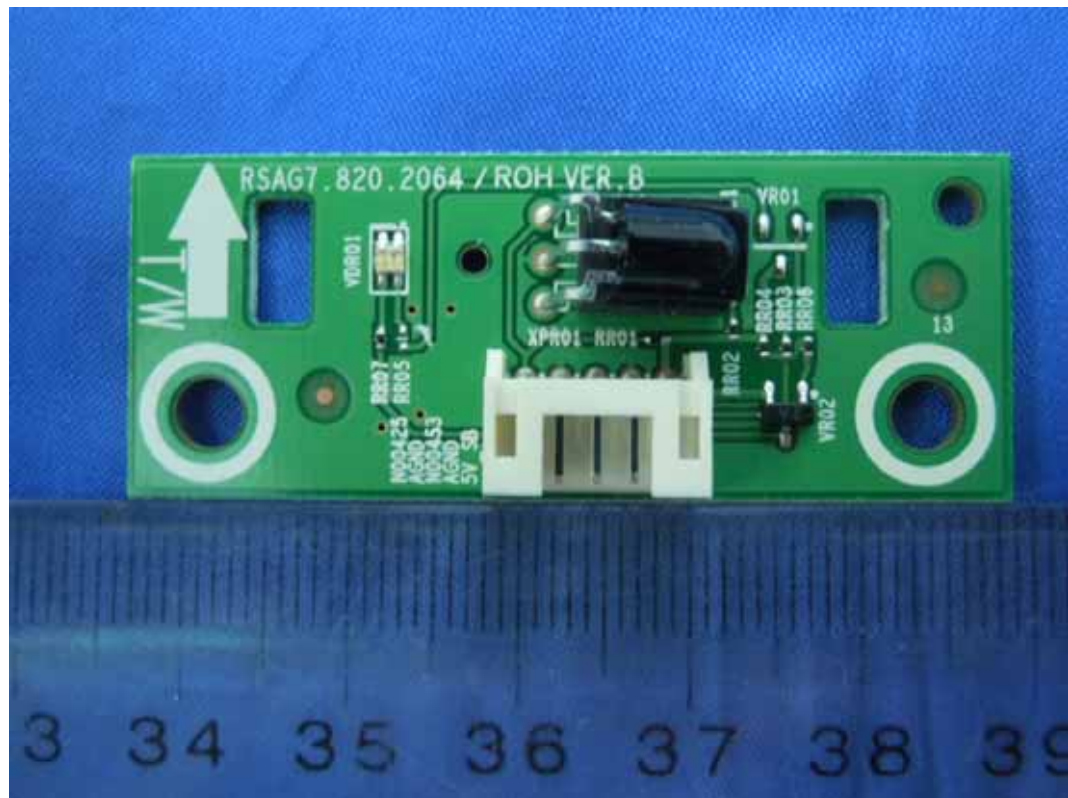


FIGURE 16  
LCD TV (M/N: LTDN42V77KMH)  
IR BOARD (SOLDERED SIDE)

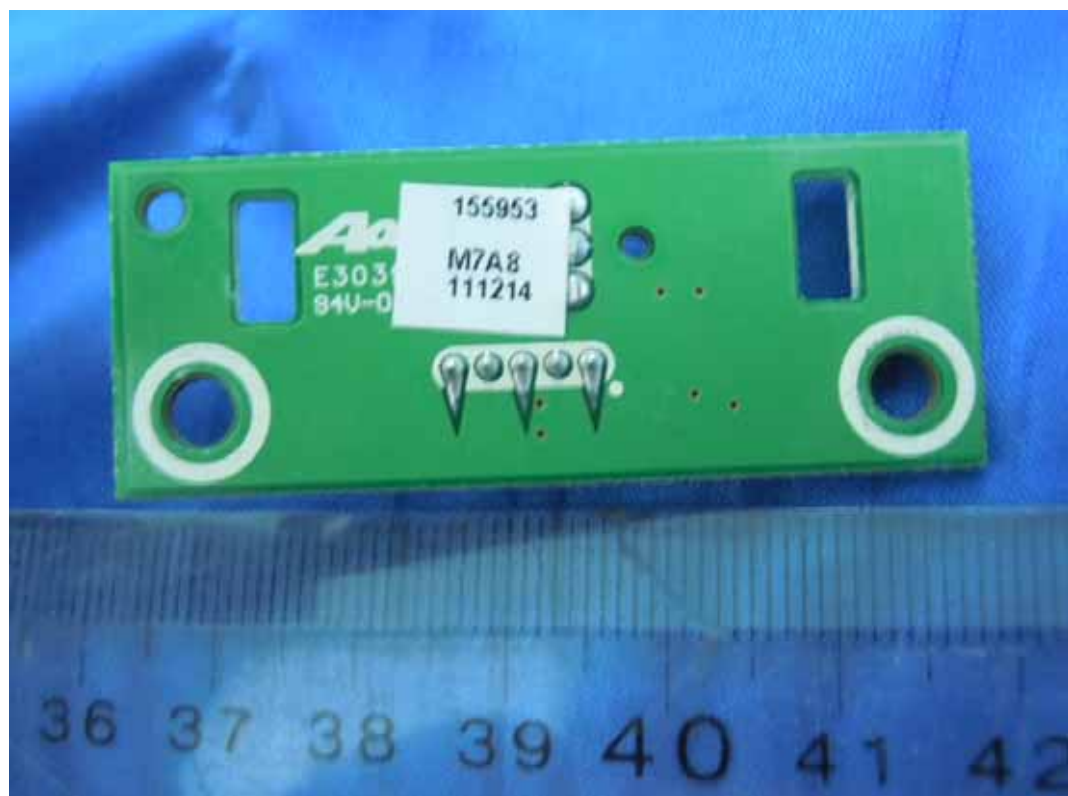


FIGURE 17  
LCD TV (M/N: LTDN42V77KMH)  
LCD PANEL BOARD (COMPONENT SIDE)

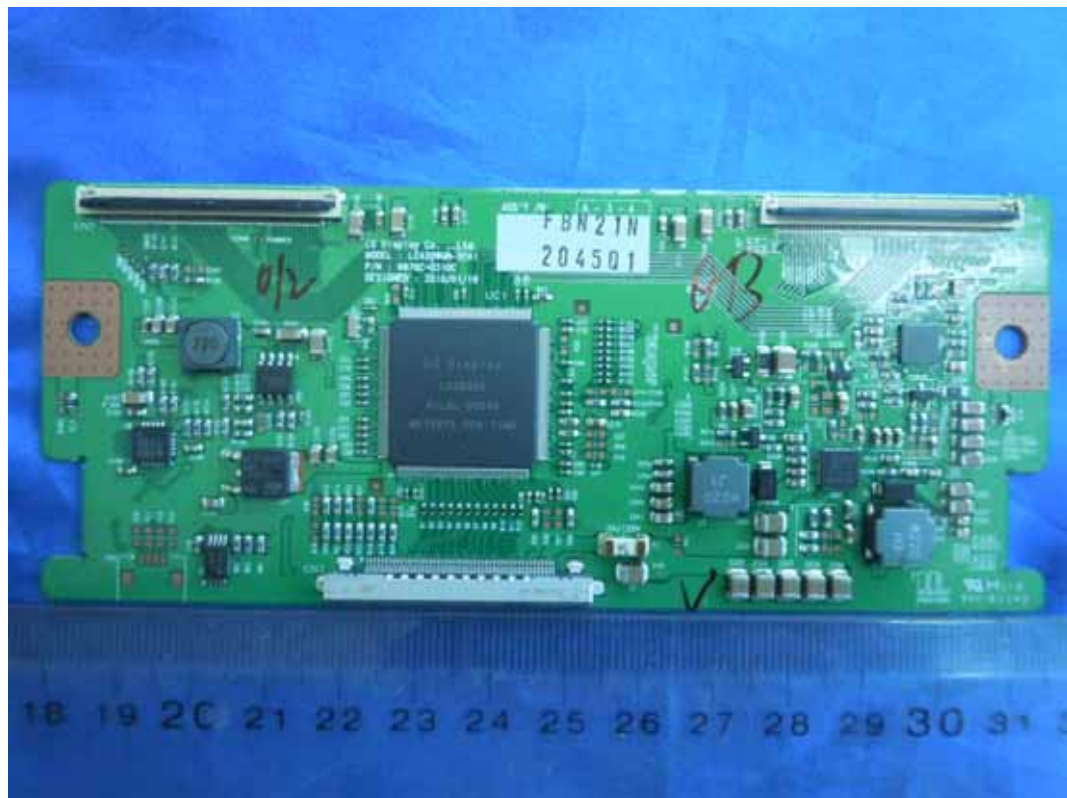
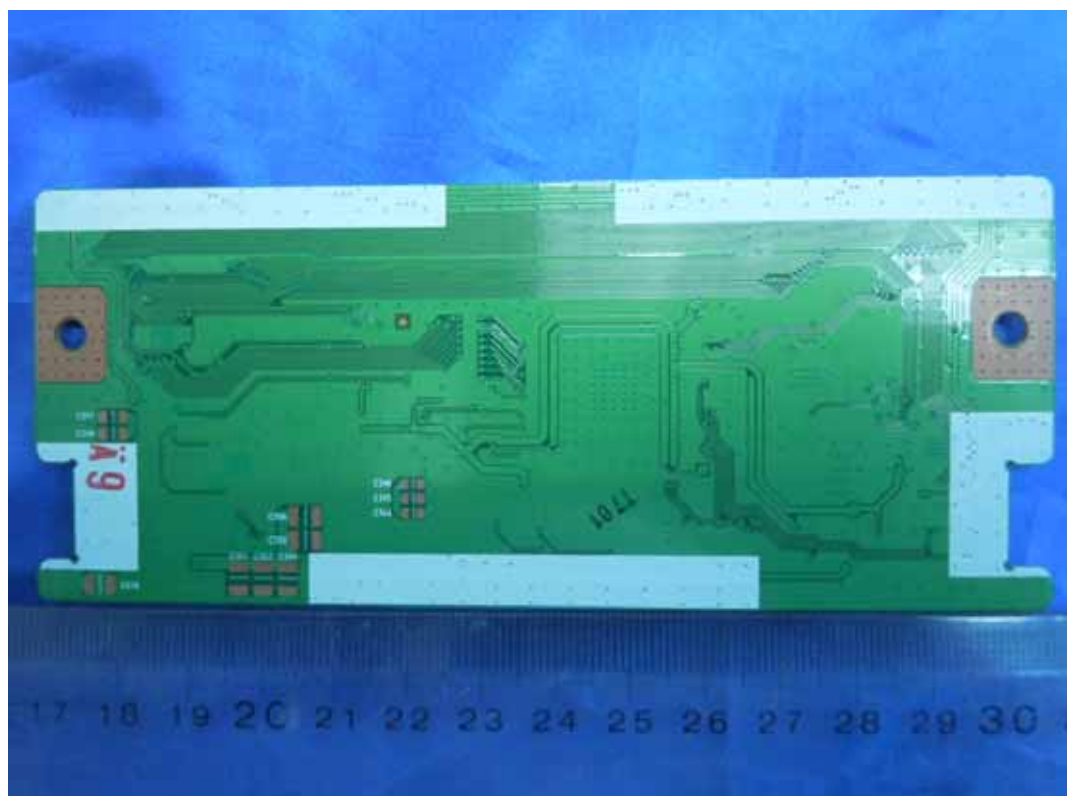


FIGURE 18  
LCD TV (M/N: LTDN42V77KMH)  
LCD PANEL BOARD (SOLDERED SIDE)



*FIGURE 19*  
*LCD TV (M/N: LTDN42V77KMH)*  
*DEBUG*

