

FIGURE 1
LCD TV (M/N: LTDN39V77MH)
COVER REMOVED



FIGURE 2
LCD TV (M/N: LTDN39V77MH)
PANEL LABEL



FIGURE 3
LCD TV (M/N: LTDN39V77MH)
POWER BOARD (COMPONENT SIDE)



FIGURE 4
LCD TV (M/N: LTDN39V77MH)
POWER BOARD (SOLDERED SIDE)



*FIGURE 5
LCD TV (M/N: LTDN39V77MH)
MAIN BOARD (COMPONENT SIDE)*



*FIGURE 6
LCD TV (M/N: LTDN39V77MH)
MAIN BOARD (SOLDERED SIDE)*



*FIGURE 7
LCD TV (M/N: LTDN39V77MH)
TUNER ON MAIN BOARD*



*FIGURE 8
LCD TV (M/N: LTDN39V77MH)
CHIP & CRYSTAL ON MAIN BOARD*

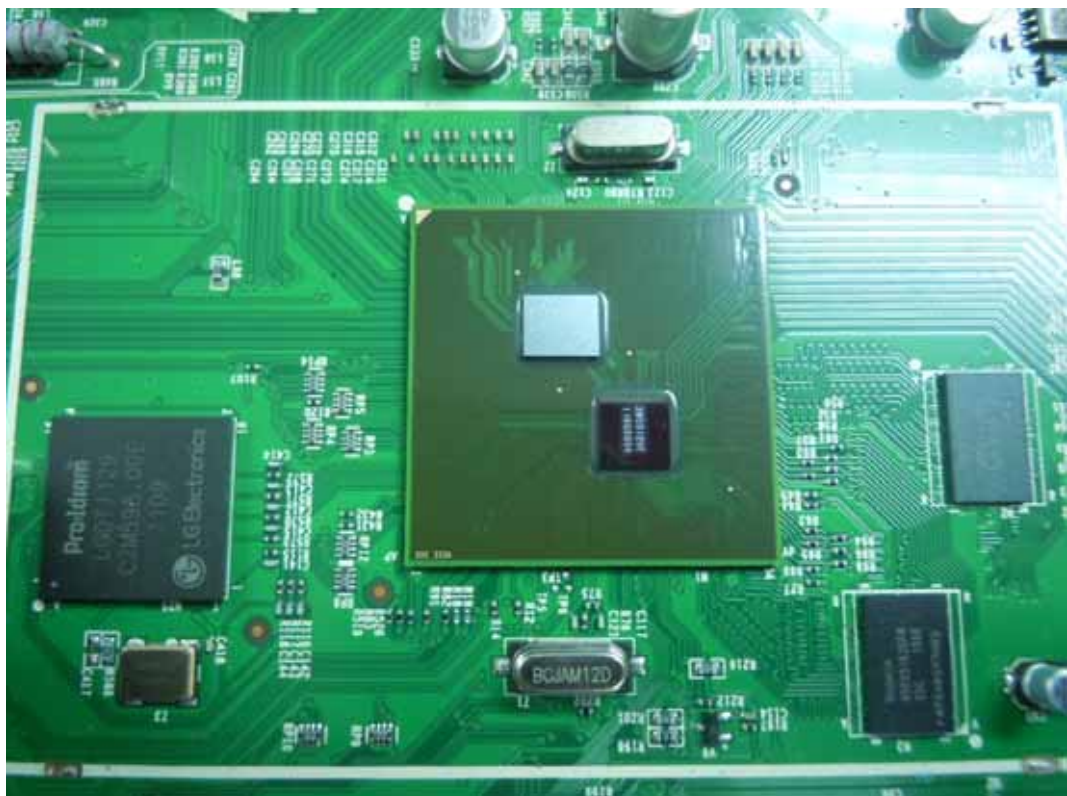


FIGURE 9
LCD TV (M/N: LTDN39V77MH)
KEY BOARD (COMPONENT SIDE)

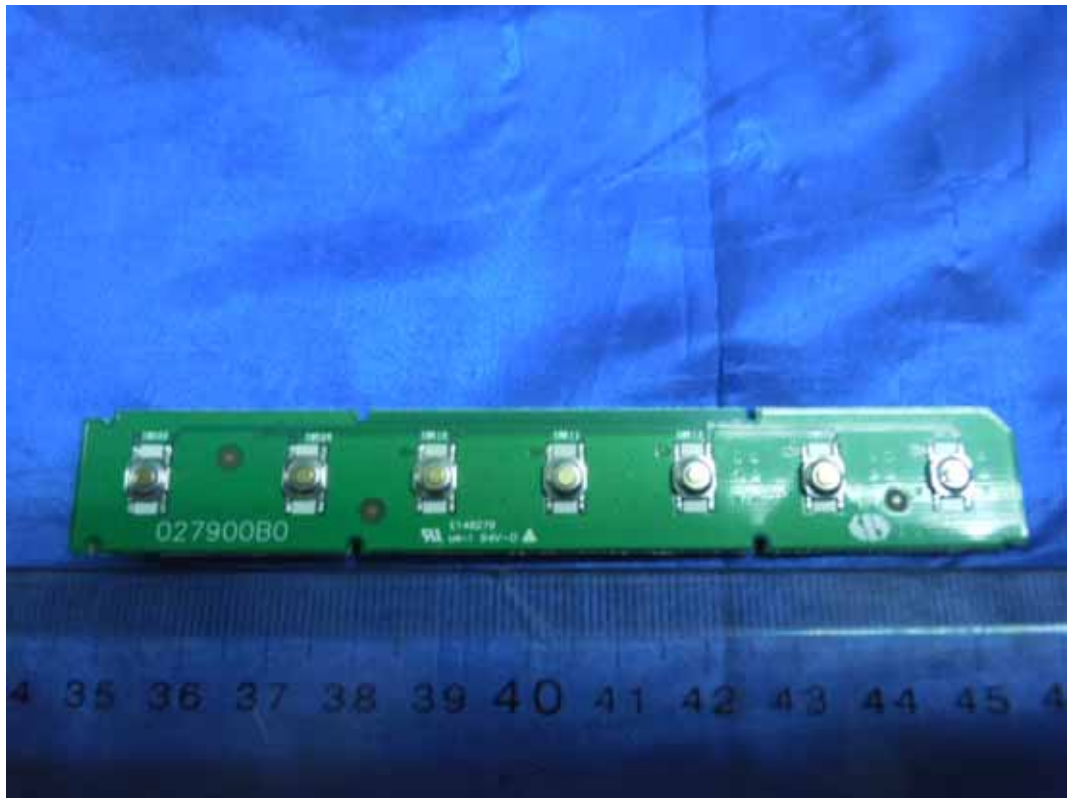


FIGURE 10
LCD TV (M/N: LTDN39V77MH)
KEY BOARD (SOLDERED SIDE)

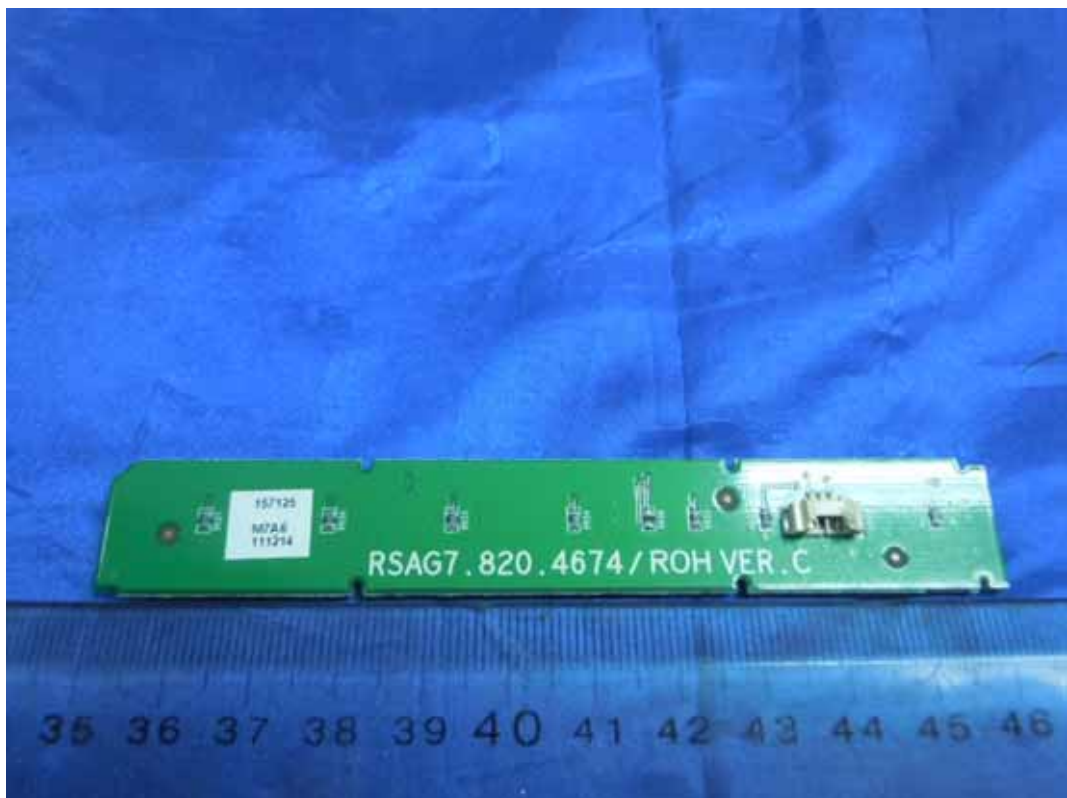


FIGURE 11
LCD TV (M/N: LTDN39V77MH)
IR BOARD (COMPONENT SIDE)

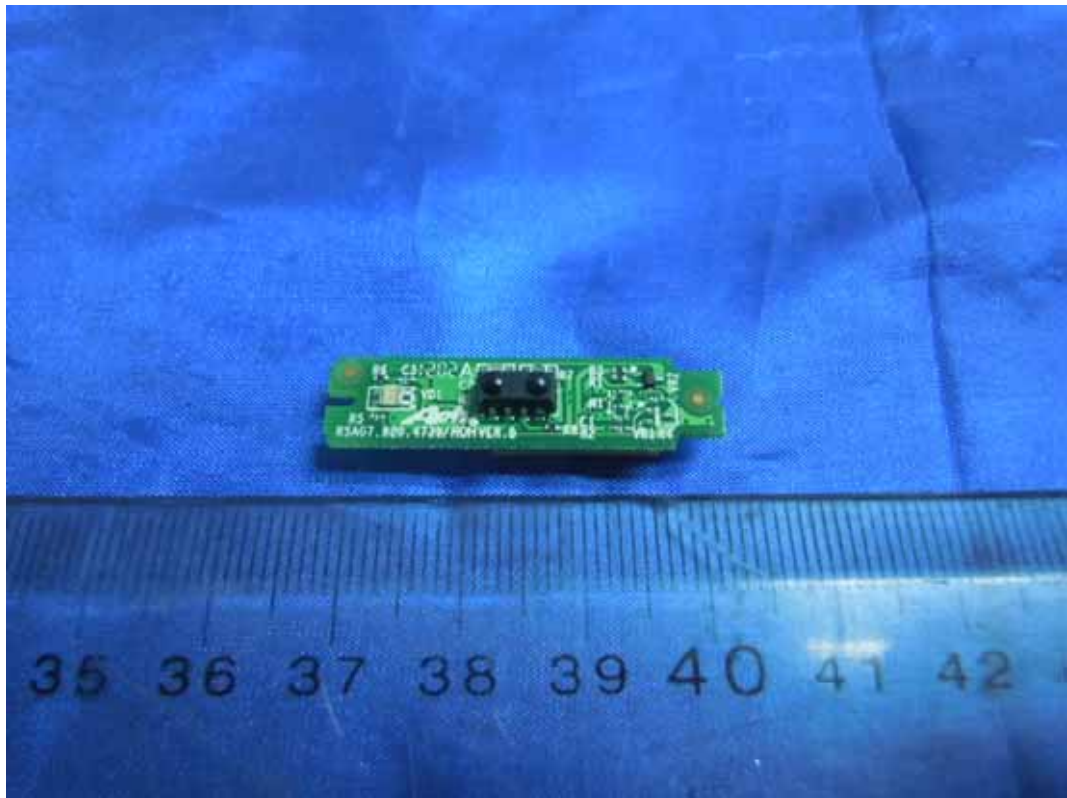


FIGURE 12
LCD TV (M/N: LTDN39V77MH)
IR BOARD (SOLDERED SIDE)

