

*FIGURE 1*  
*LCD TV (M/N: LTDN40V86MH)*  
*COVER REMOVED*



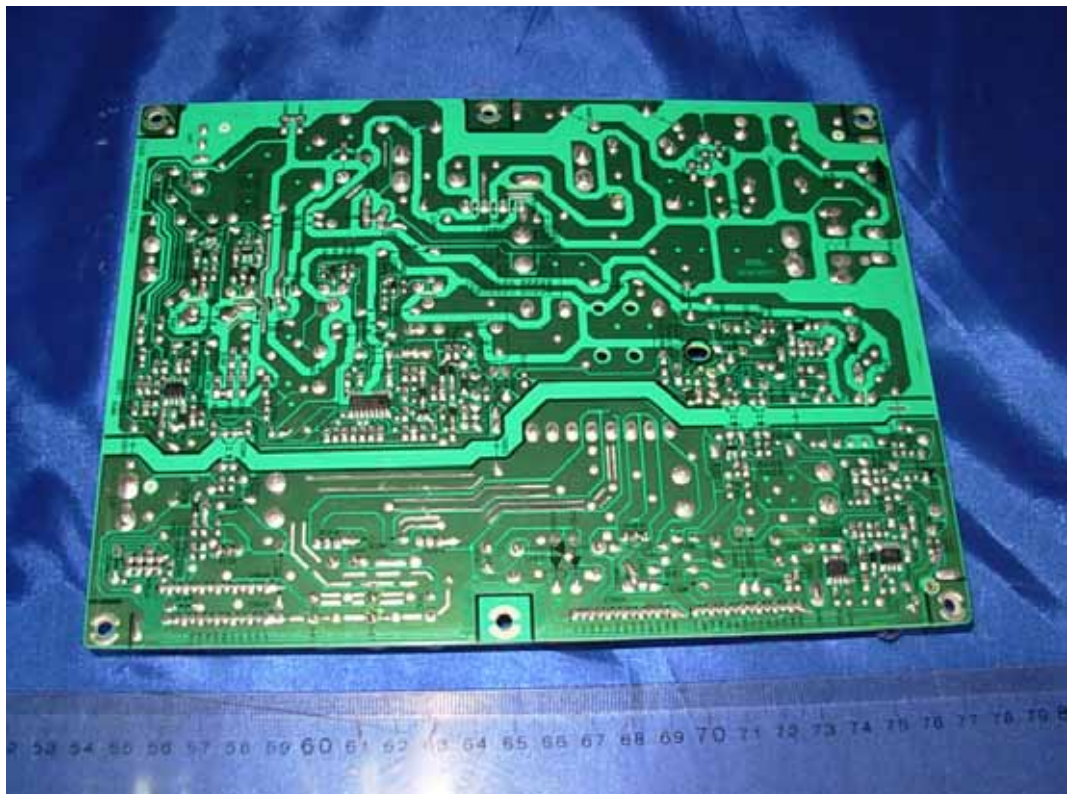
*FIGURE 2*  
*LCD TV (M/N: LTDN40V86MH)*  
*LABEL ON LCD PANEL*



*FIGURE 3*  
*LCD TV (M/N: LTDN40V86MH)*  
*POWER BOARD (COMPONENT SIDE)*



*FIGURE 4*  
*LCD TV (M/N: LTDN40V86MH)*  
*POWER BOARD (SOLDERED SIDE)*



*FIGURE 5  
LCD TV (M/N: LTDN40V86MH)  
MAIN BOARD (COMPONENT SIDE)*



*FIGURE 6  
LCD TV (M/N: LTDN40V86MH)  
MAIN BOARD (SOLDERED SIDE)*

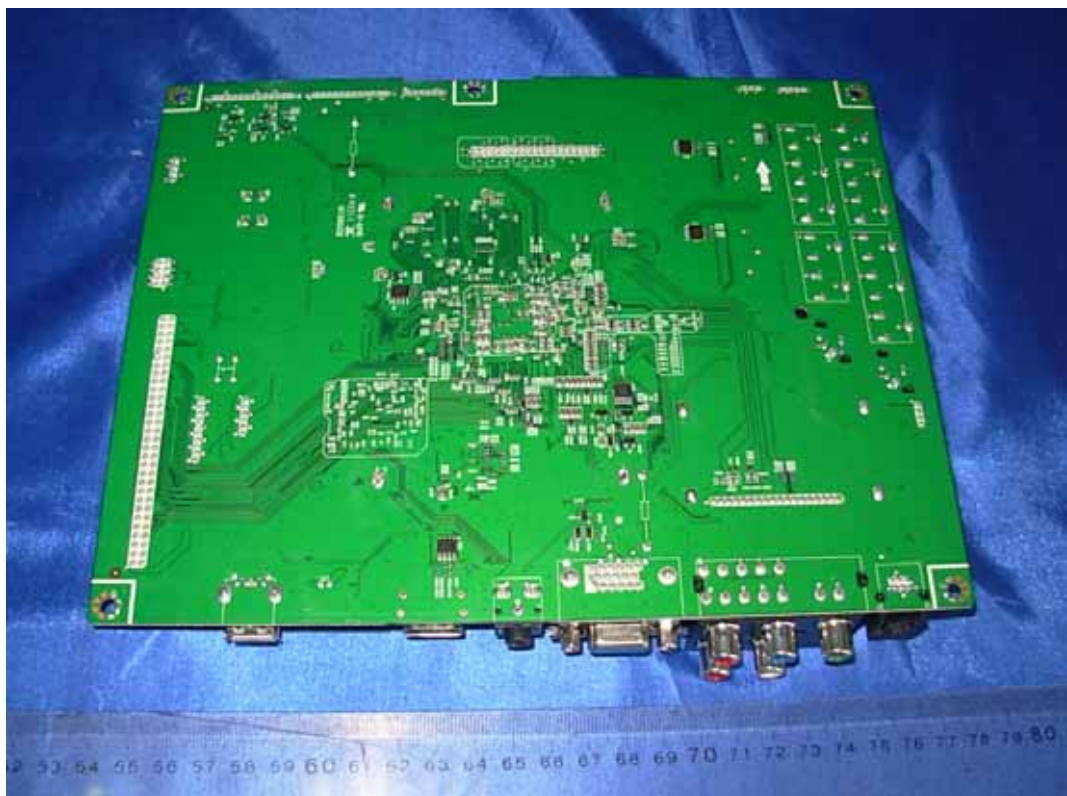


FIGURE 7  
LCD TV (M/N: LTDN40V86MH)  
TUNER ON MAIN BOARD



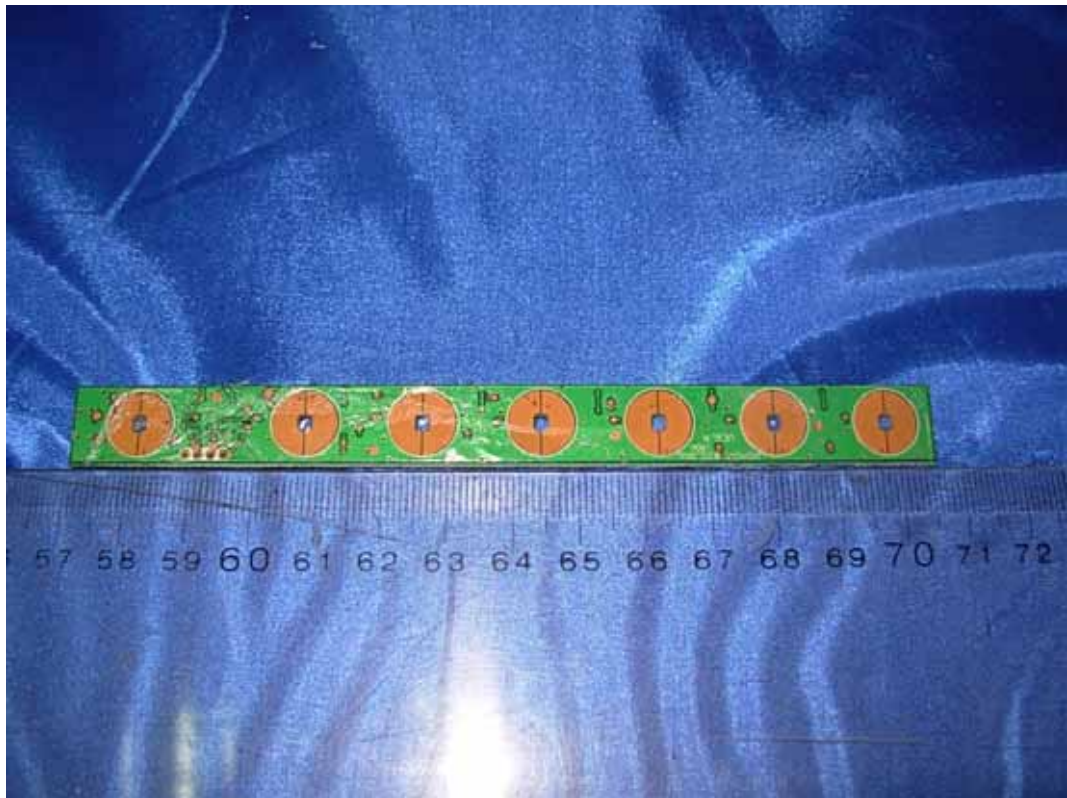
FIGURE 8  
LCD TV (M/N: LTDN40V86MH)  
CHIP #1 & CRYSTAL #1 ON MAIN BOARD



FIGURE 9  
LCD TV (M/N: LTDN40V86MH)  
CHIP #2 & CRYSTAL #2 ON MAIN BOARD



*FIGURE 10*  
*LCD TV (M/N: LTDN40V86MH)*  
*KEY BOARD (COMPONENT SIDE)*



*FIGURE 11*  
*LCD TV (M/N: LTDN40V86MH)*  
*KEY BOARD (SOLDERED SIDE)*

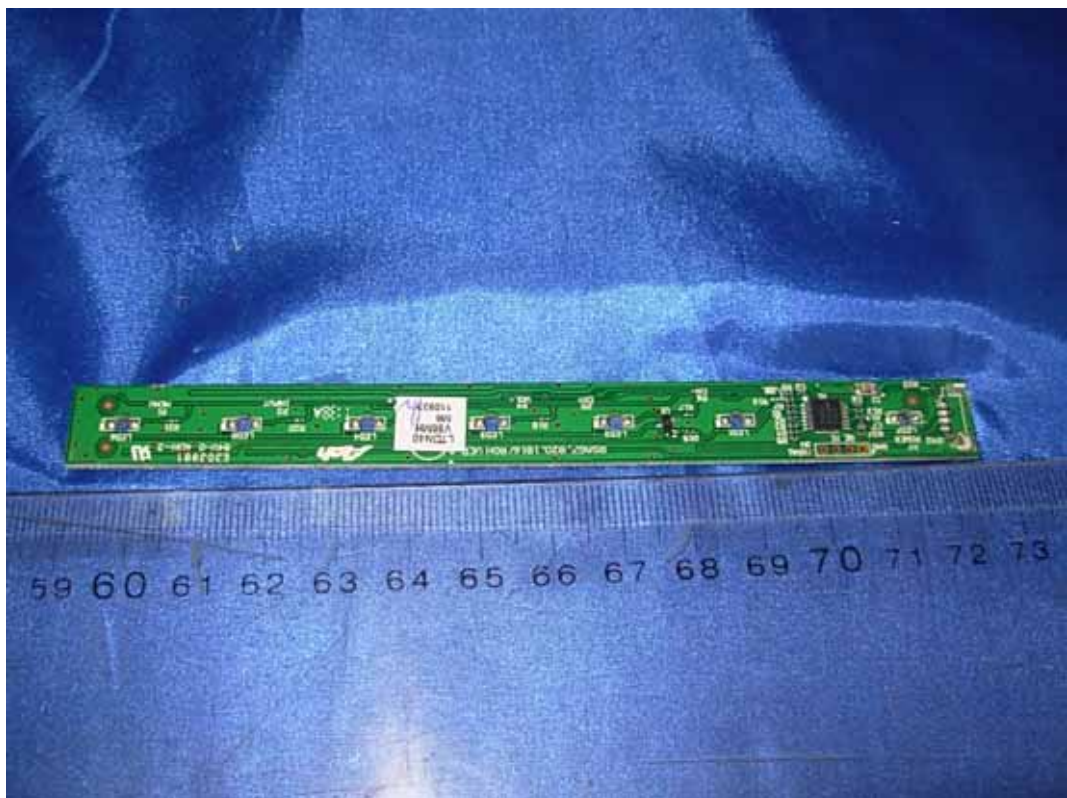
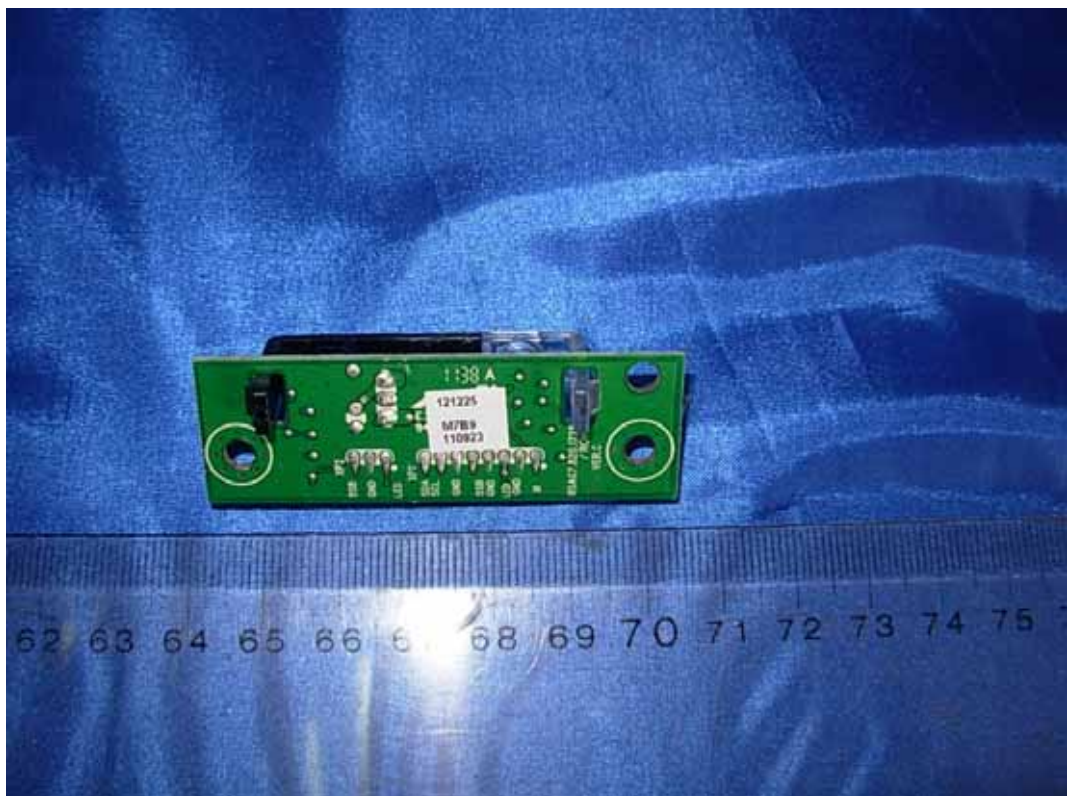


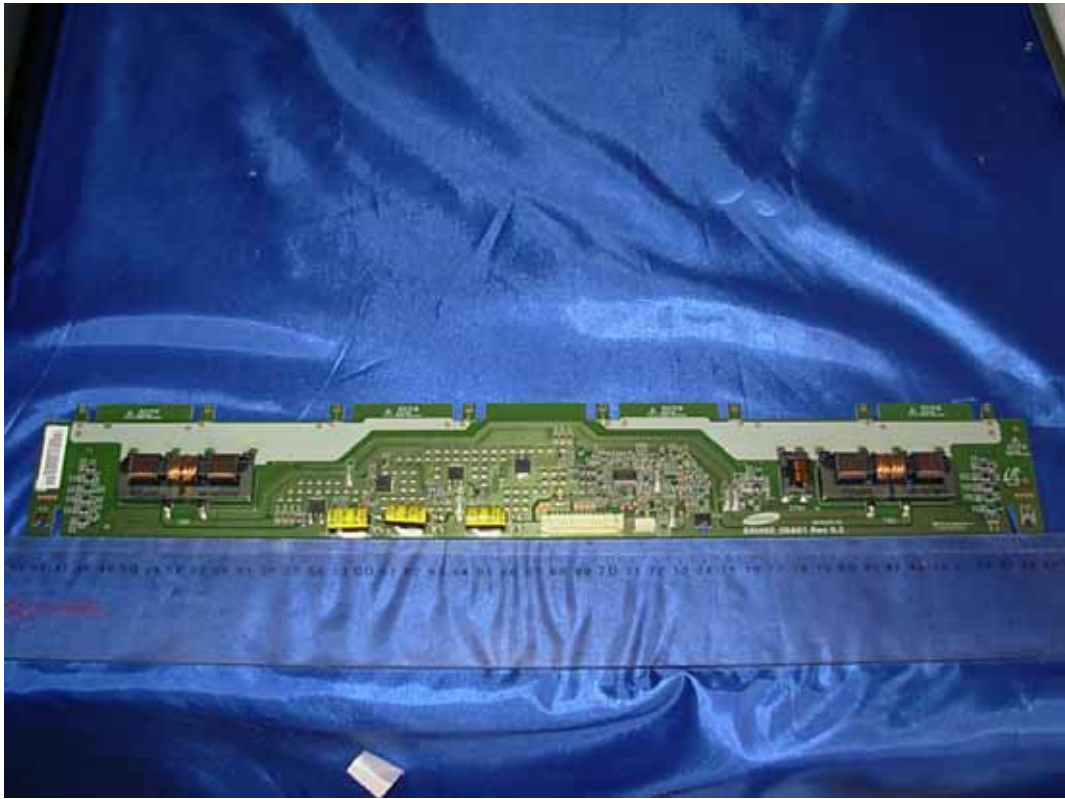
FIGURE 12  
LCD TV (M/N: LTDN40V86MH)  
IR BOARD (COMPONENT SIDE)



FIGURE 13  
LCD TV (M/N: LTDN40V86MH)  
IR BOARD (SOLDERED SIDE)



*FIGURE 14*  
*LCD TV (M/N: LTDN40V86MH)*  
*HIGH VOLTAGE SIGNAL BOARD (COMPONENT SIDE)*



*FIGURE 15*  
*LCD TV (M/N: LTDN40V86MH)*  
*HIGH VOLTAGE SIGNAL BOARD (SOLDERED SIDE)*





FIGURE 16  
LCD TV (M/N: LTDN40V86MH)  
DEBUG 1



FIGURE 17  
LCD TV (M/N: LTDN40V86MH)  
DEBUG 2



FIGURE 18  
LCD TV (M/N: LTDN40V86MH)  
DEBUG 3

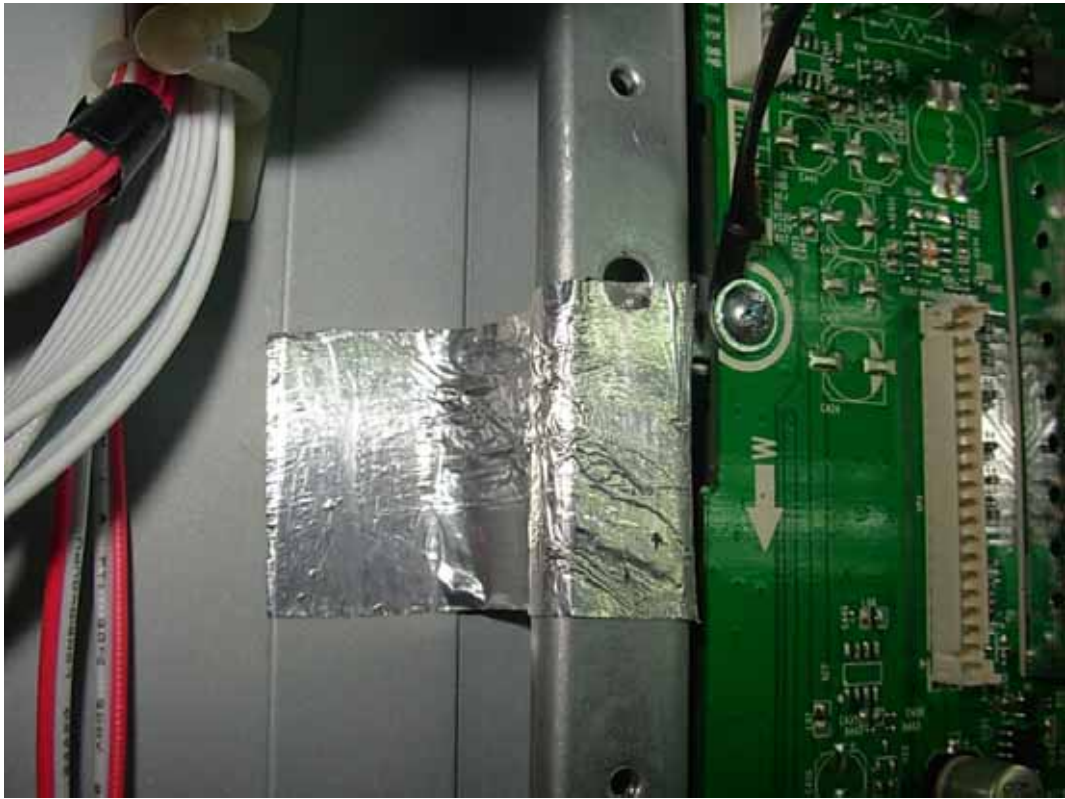


FIGURE 19  
LCD TV (M/N: LTDN40V86MH)  
DEBUG 4

