

FIGURE 1
LCD TV (M/N: LTDN42V77US)
COVER REMOVED



FIGURE 2
LCD TV (M/N: LTDN42V77US)
LCD PANEL LABEL



FIGURE 3
LCD TV (M/N: LTDN42V77US)
POWER BOARD (COMPONENT SIDE)



FIGURE 4
LCD TV (M/N: LTDN42V77US)
POWER BOARD (SOLDERED SIDE)

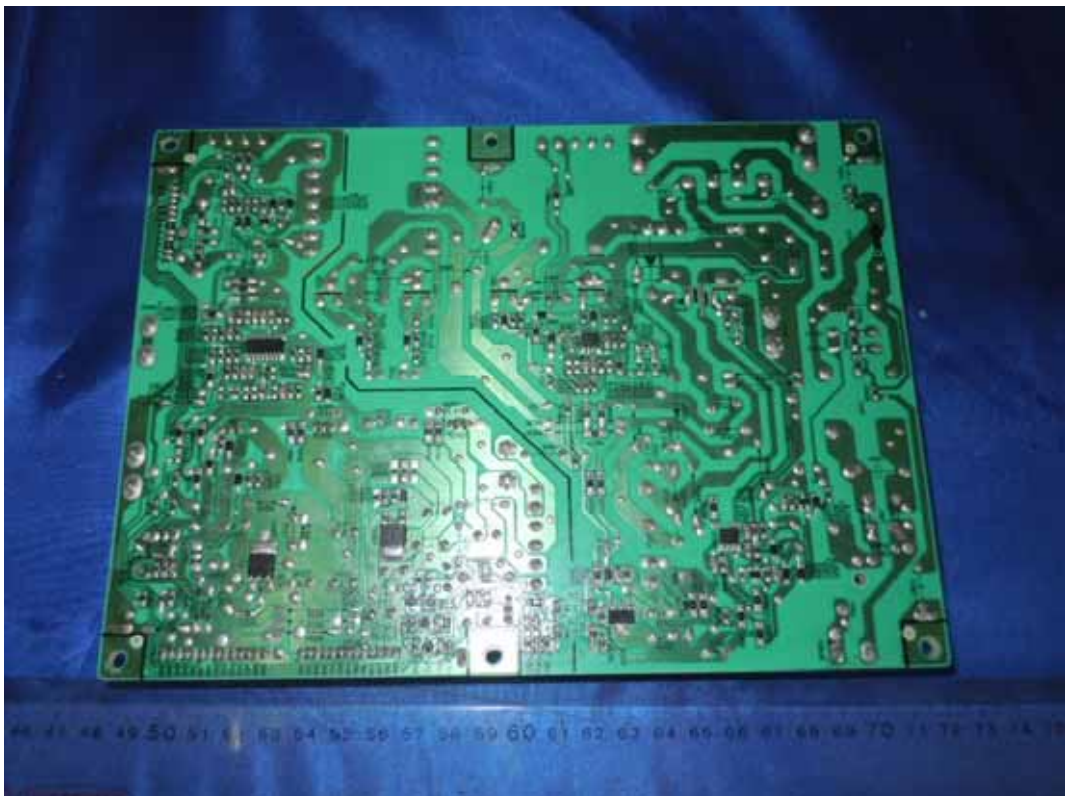


FIGURE 5
LCD TV (M/N: LTDN42V77US)
MAIN BOARD (COMPONENT SIDE)



FIGURE 6
LCD TV (M/N: LTDN42V77US)
MAIN BOARD (SOLDERED SIDE)



FIGURE 7
LCD TV (M/N: LTDN42V77US)
TUNER ON MAIN BOARD



FIGURE 8
LCD TV (M/N: LTDN42V77US)
CHIP & CRYSTAL ON MAIN BOARD



FIGURE 9
LCD TV (M/N: LTDN42V77US)
KEY BOARD (COMPONENT SIDE)

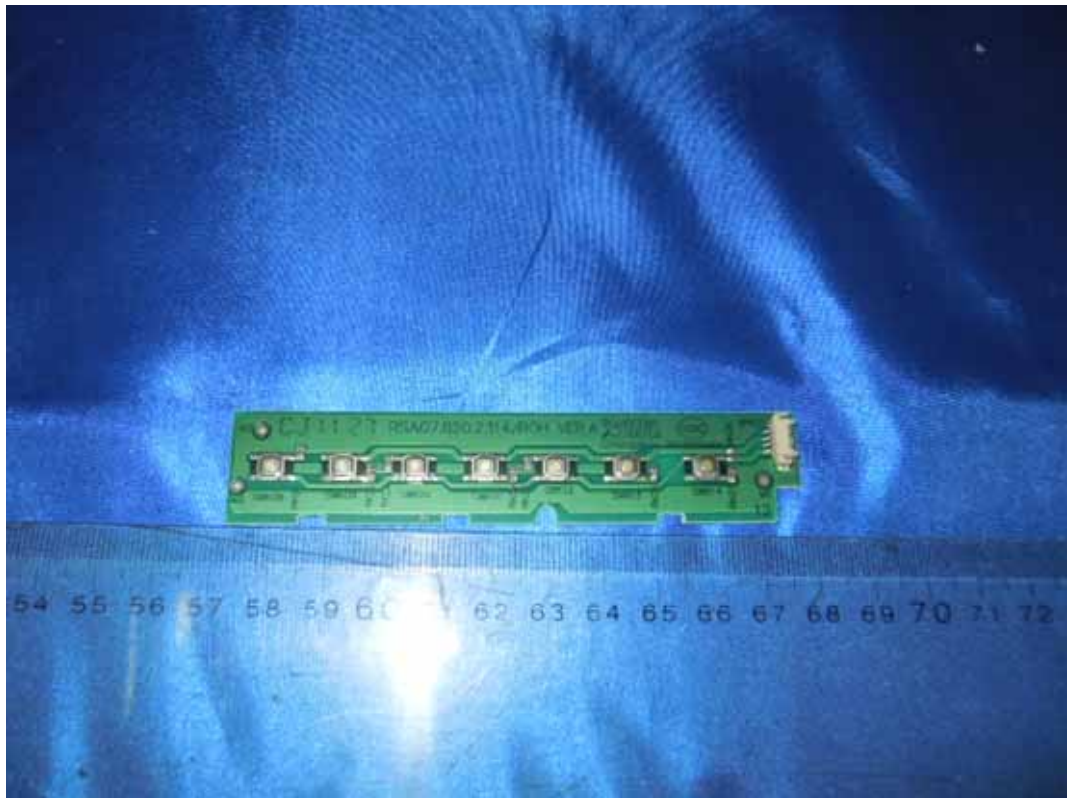


FIGURE 10
LCD TV (M/N: LTDN42V77US)
KEY BOARD (SOLDERED SIDE)

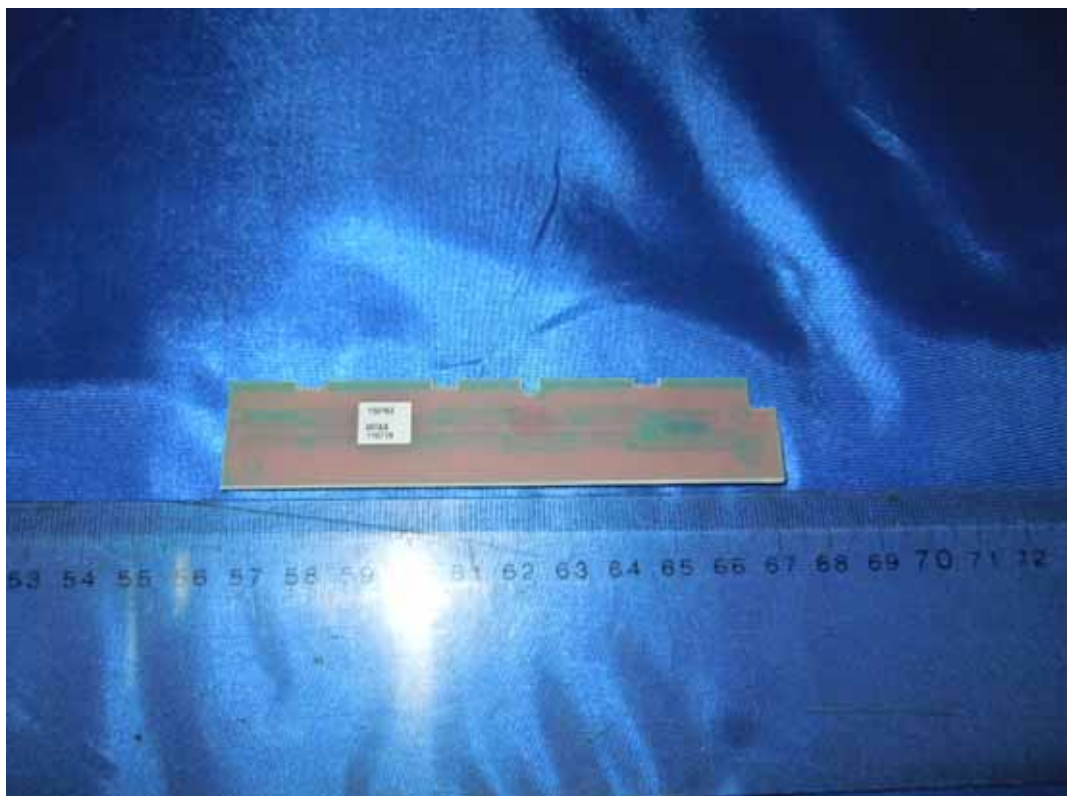


FIGURE 11
LCD TV (M/N: LTDN42V77US)
IR BOARD (COMPONENT SIDE)

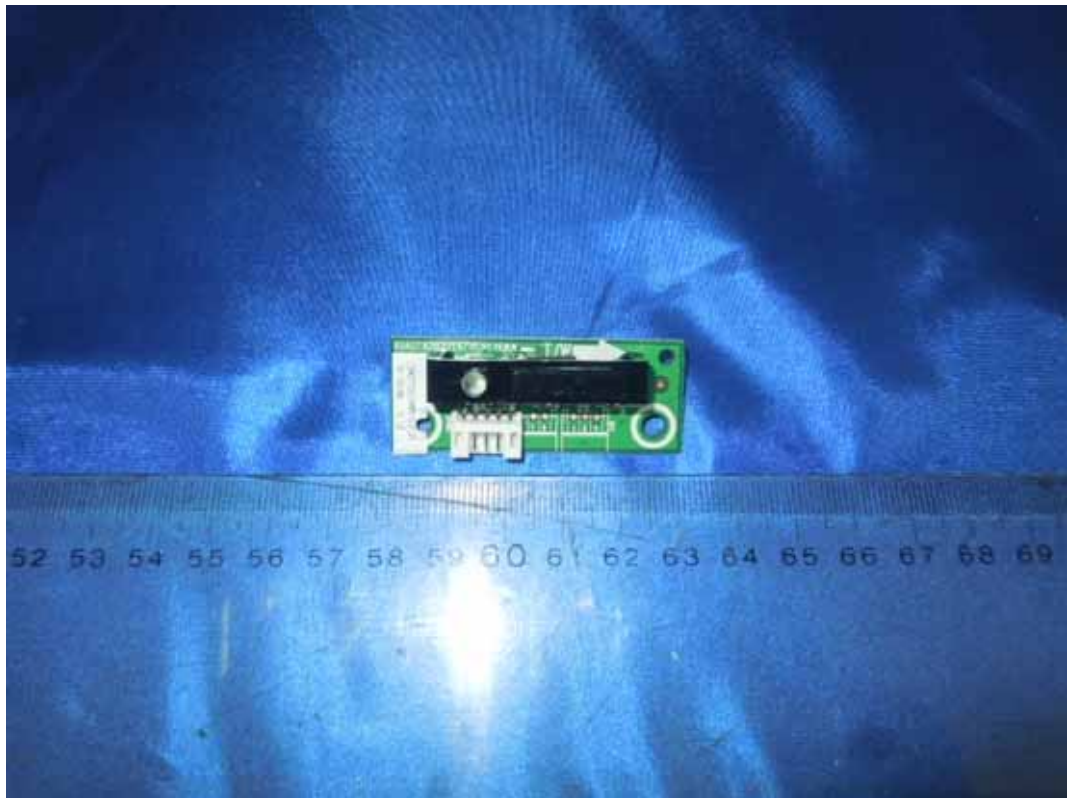


FIGURE 12
LCD TV (M/N: LTDN42V77US)
IR BOARD (SOLDERED SIDE)

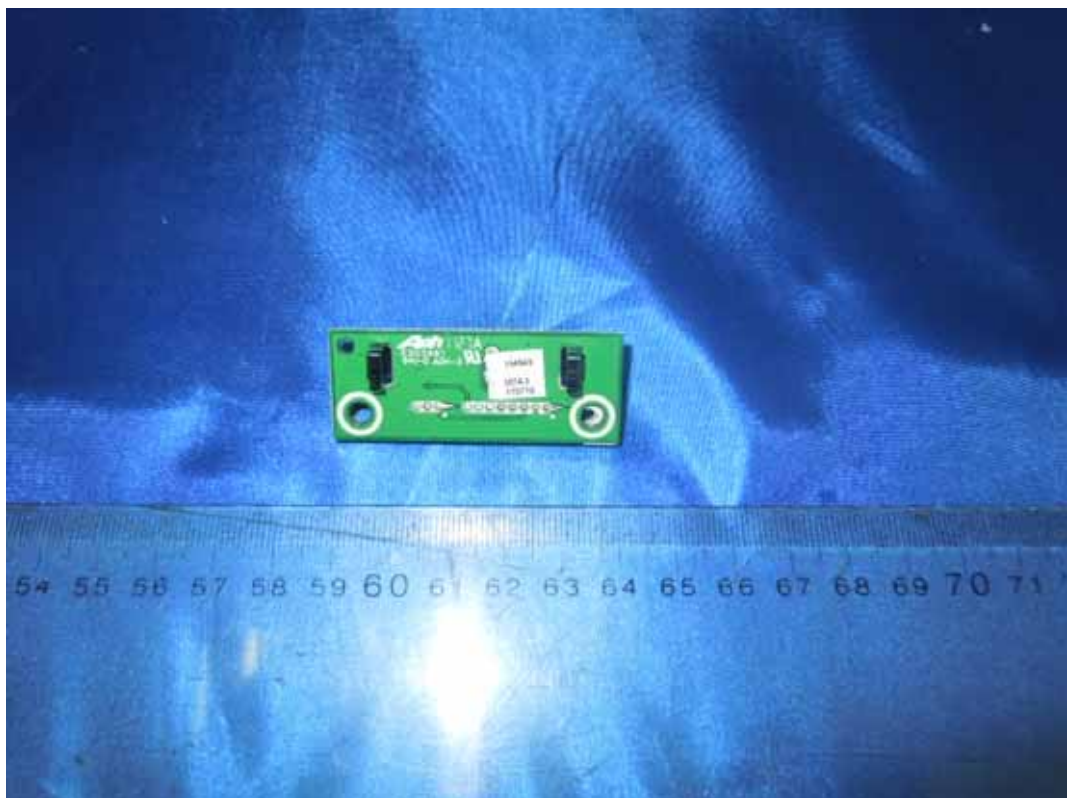


FIGURE 13
LCD TV (M/N: LTDN42V77US)
DEBUG 1



FIGURE 14
LCD TV (M/N: LTDN42V77US)
DEBUG 2



FIGURE 15
LCD TV (M/N: LTDN42V77US)
DEBUG 3

