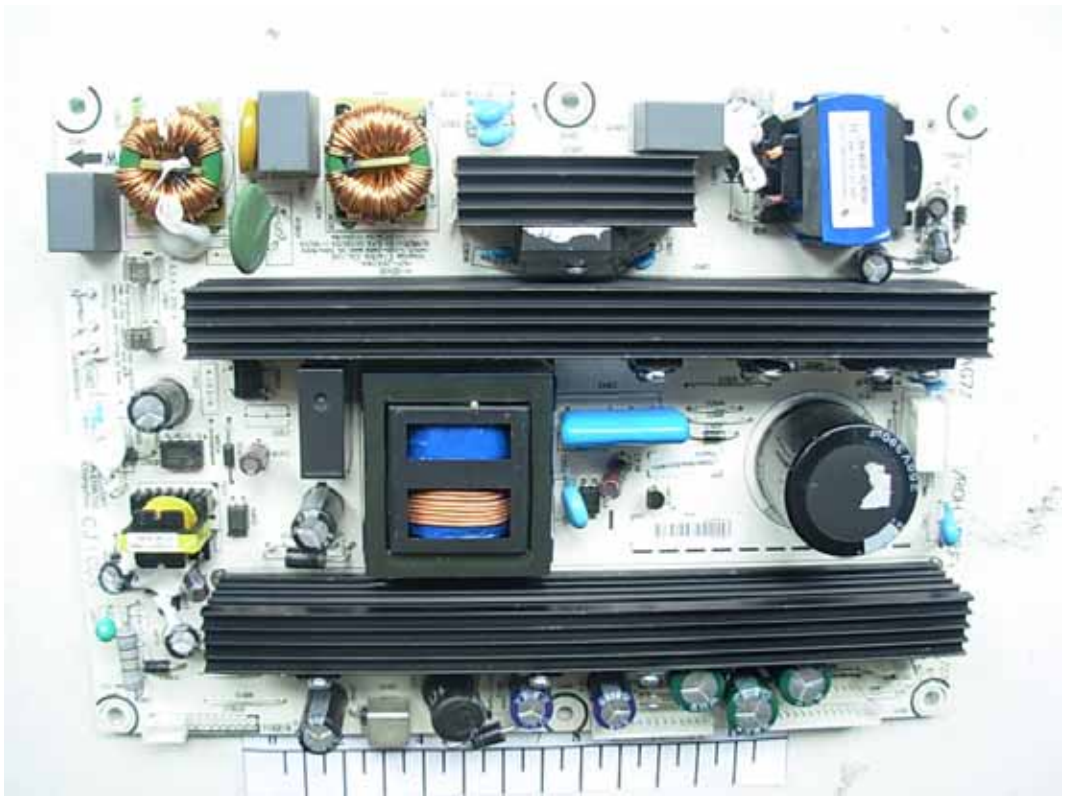


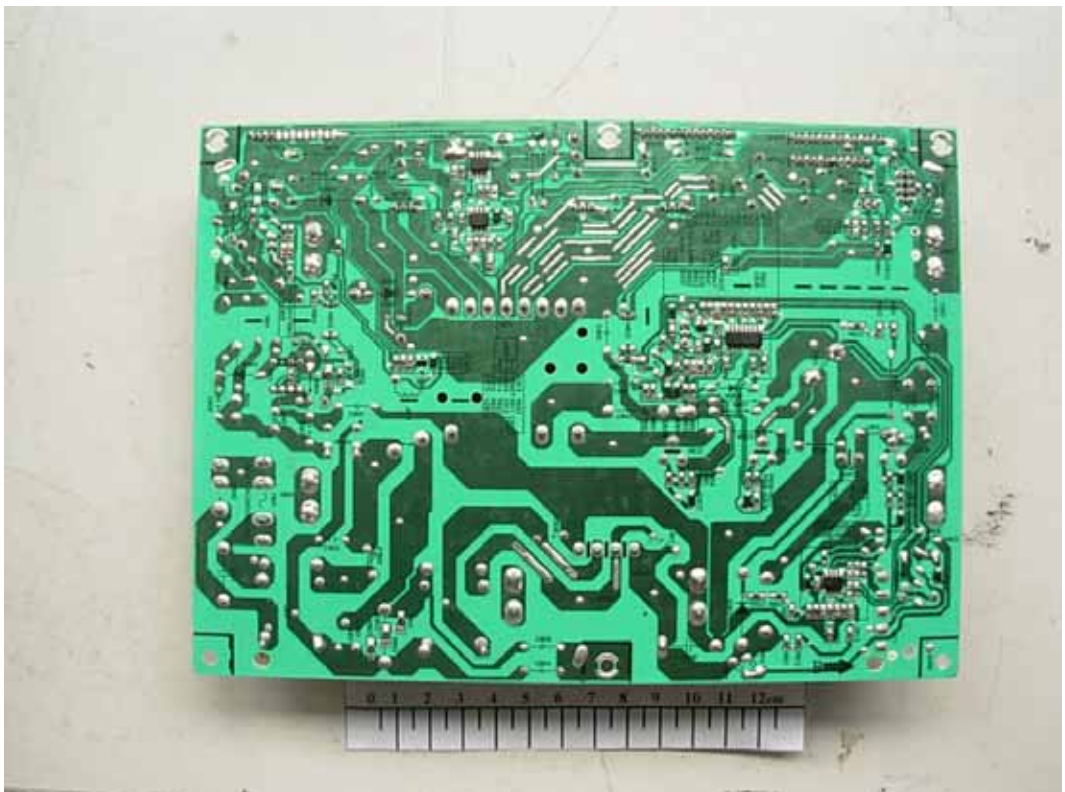
*FIGURE 1*  
*LCD TV (M/N: LTDN40V68NUS)*  
*COVER REMOVED*



*FIGURE 2*  
*LCD TV (M/N: LTDN40V68NUS)*  
*POWER BOARD (COMPONENT SIDE)*



*FIGURE 3*  
*LCD TV (M/N: LTDN40V68NUS)*  
*POWER BOARD (SOLDERED SIDE)*



*FIGURE 4*  
*LCD TV (M/N: LTDN40V68NUS)*  
*MAIN BOARD (COMPONENT SIDE)*



*FIGURE 5*  
*LCD TV (M/N: LTDN40V68NUS)*  
*MAIN BOARD (SOLDERED SIDE)*

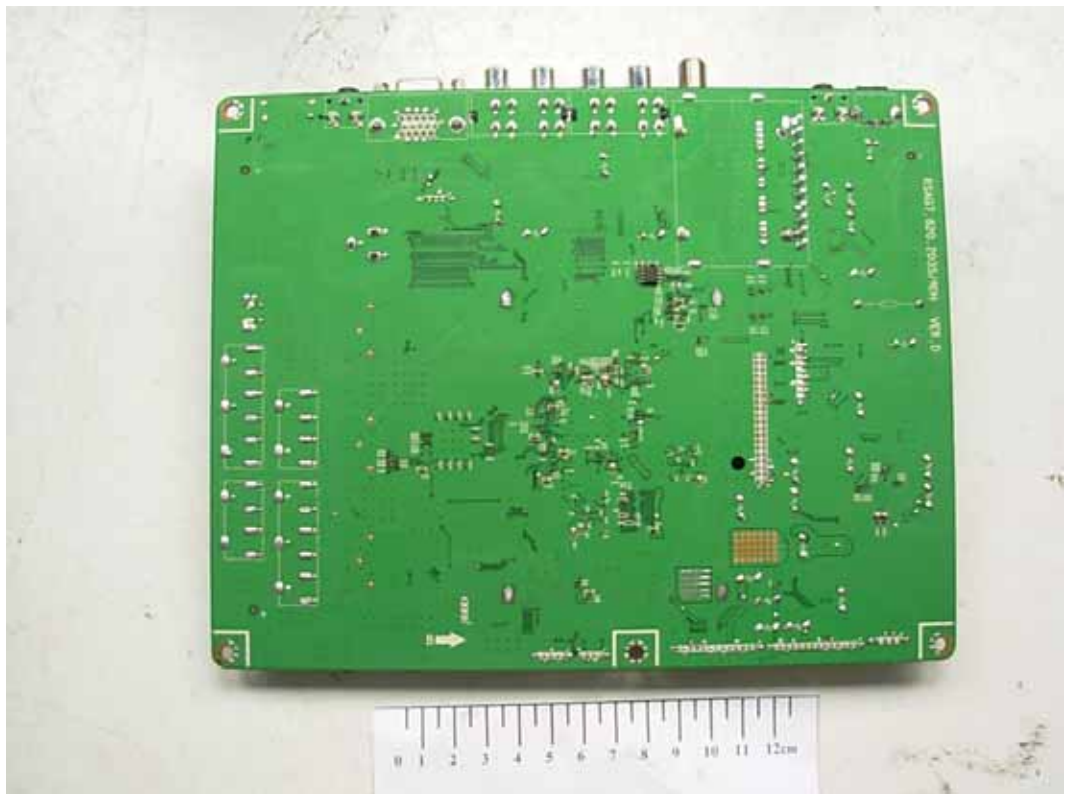


FIGURE 6  
LCD TV (M/N: LTDN40V68NUS)  
CRYSTAL #1 & CHIP #1 ON MAIN BOARD



FIGURE 7  
LCD TV (M/N: LTDN40V68NUS)  
TUNER



FIGURE 8  
LCD TV (M/N: LTDN40V68NUS)  
IR BOARD (COMPONENT SIDE)

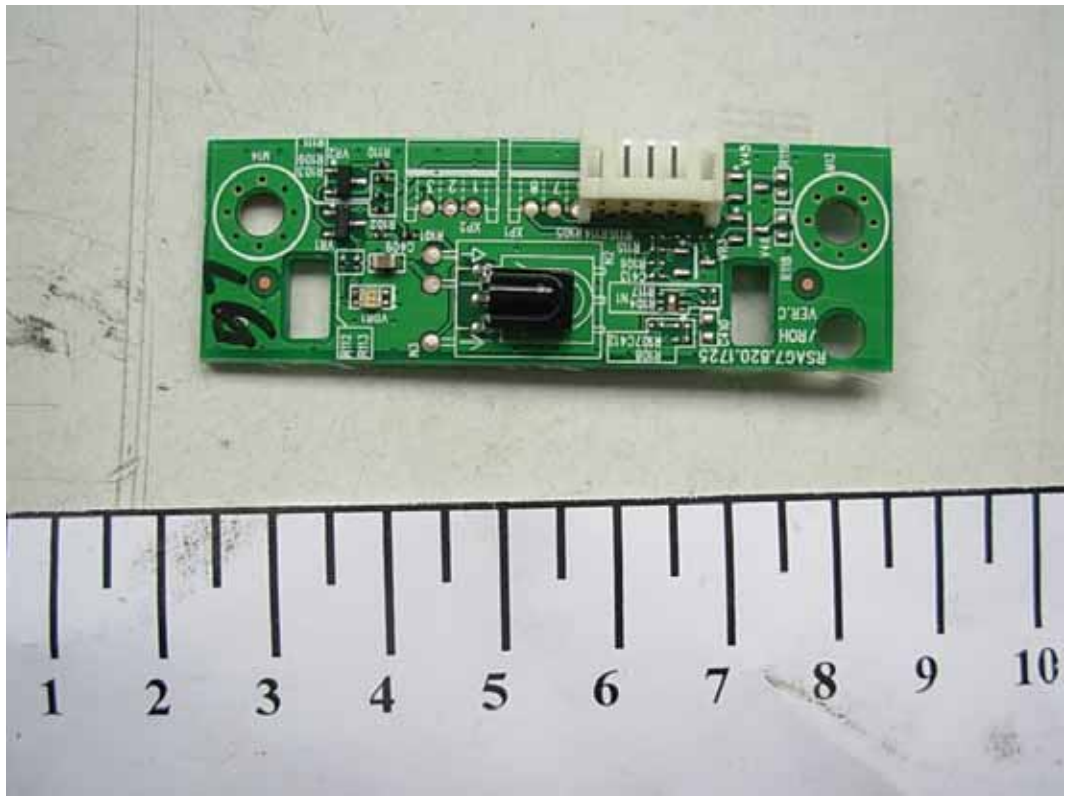
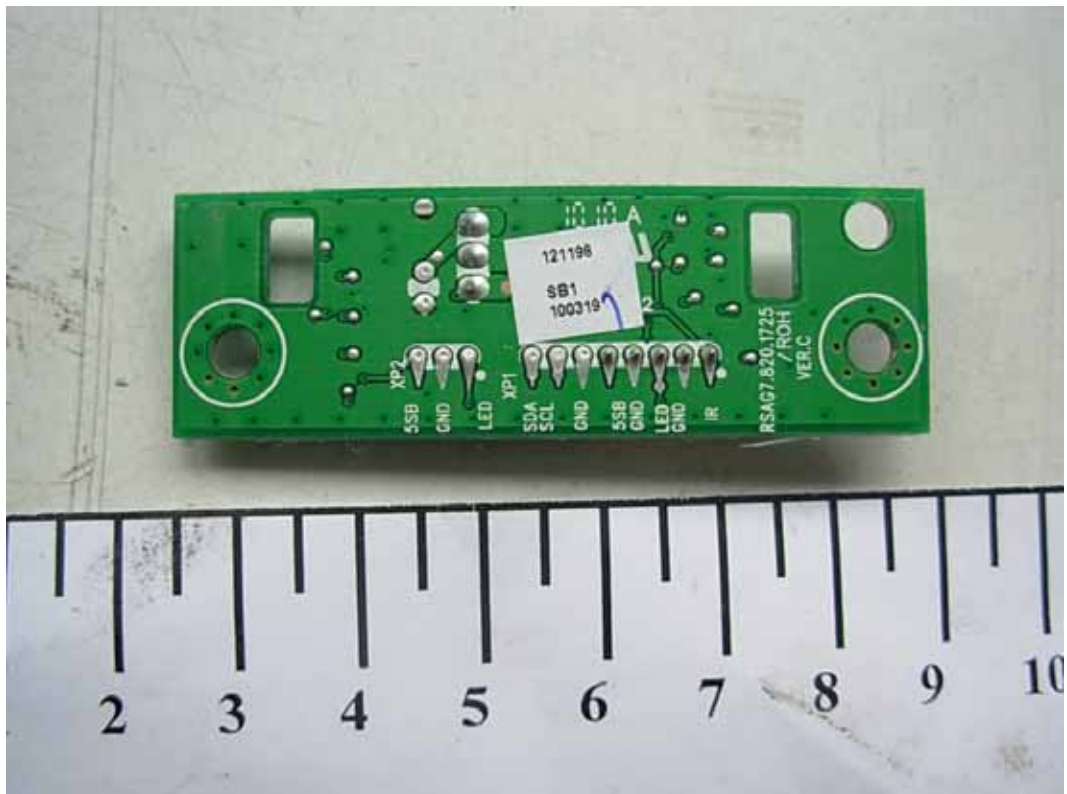
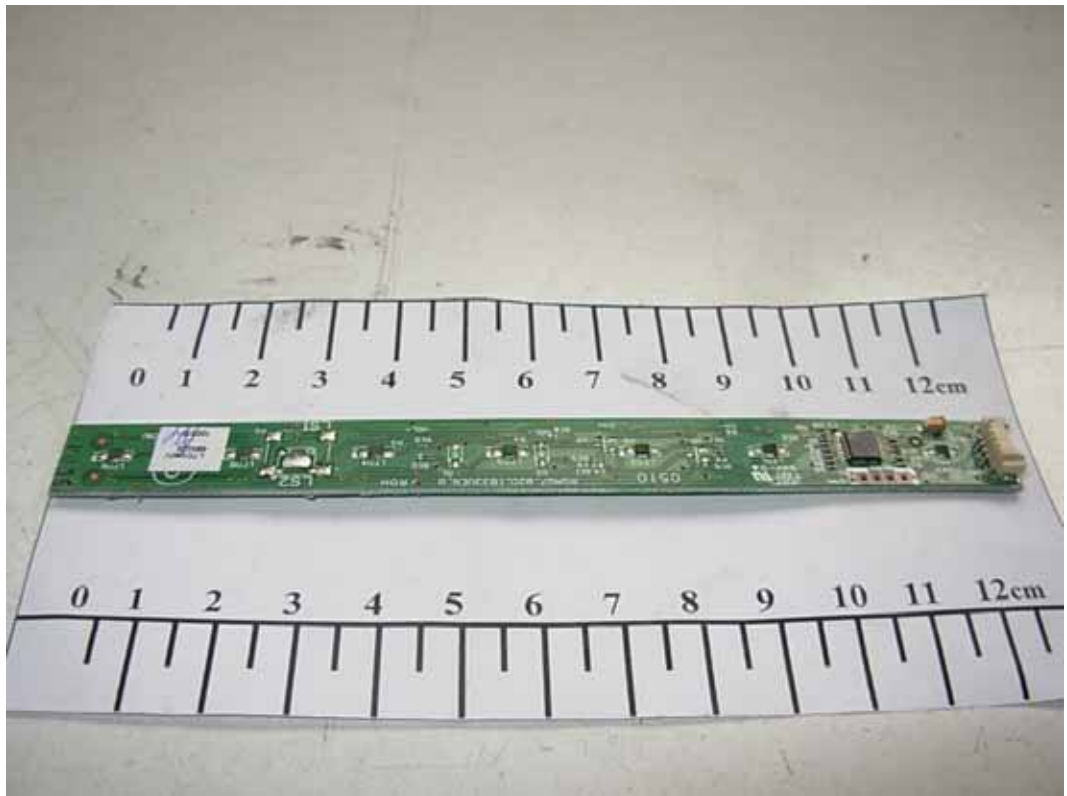


FIGURE 9  
LCD TV (M/N: LTDN40V68NUS)  
IR BOARD (SOLDERED SIDE)



*FIGURE 10*  
*LCD TV (M/N: LTDN40V68NUS)*  
*KEY BOARD (COMPONENT SIDE)*



*FIGURE 11*  
*LCD TV (M/N: LTDN40V68NUS)*  
*KEY BOARD (SOLDERED SIDE)*

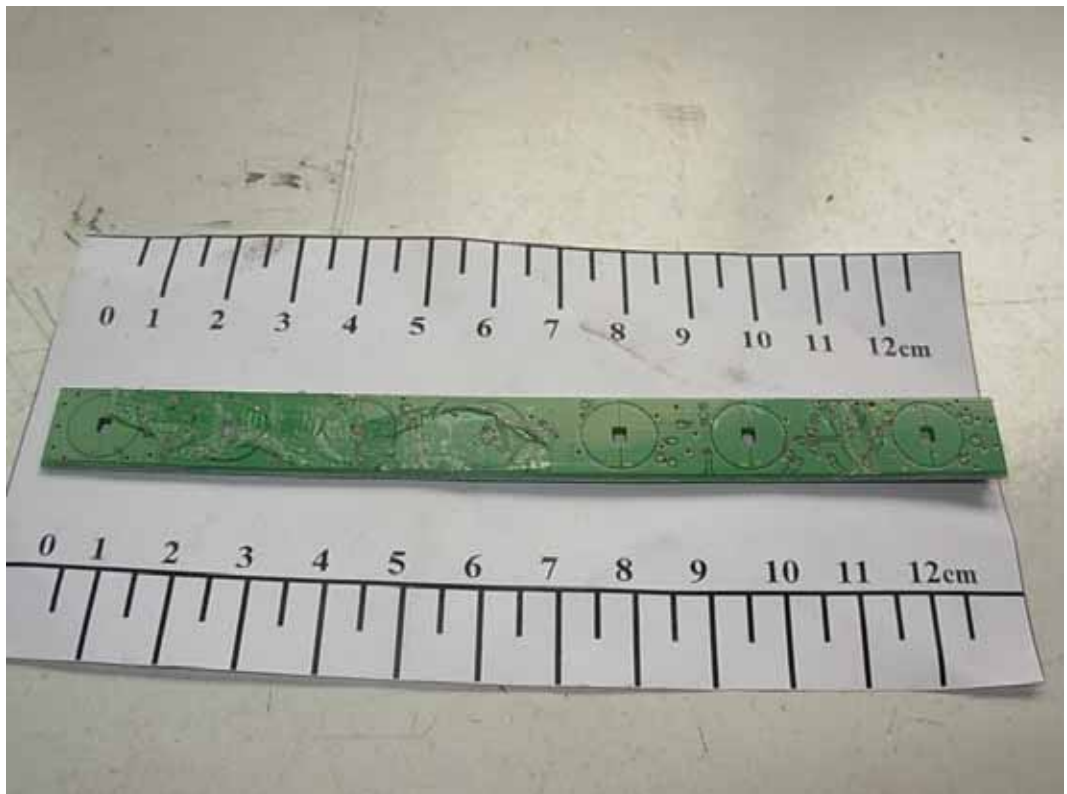


FIGURE 12  
LCD TV (M/N: LTDN40V68NUS)  
LCD PANEL MAIN BOARD (COMPONENT SIDE)

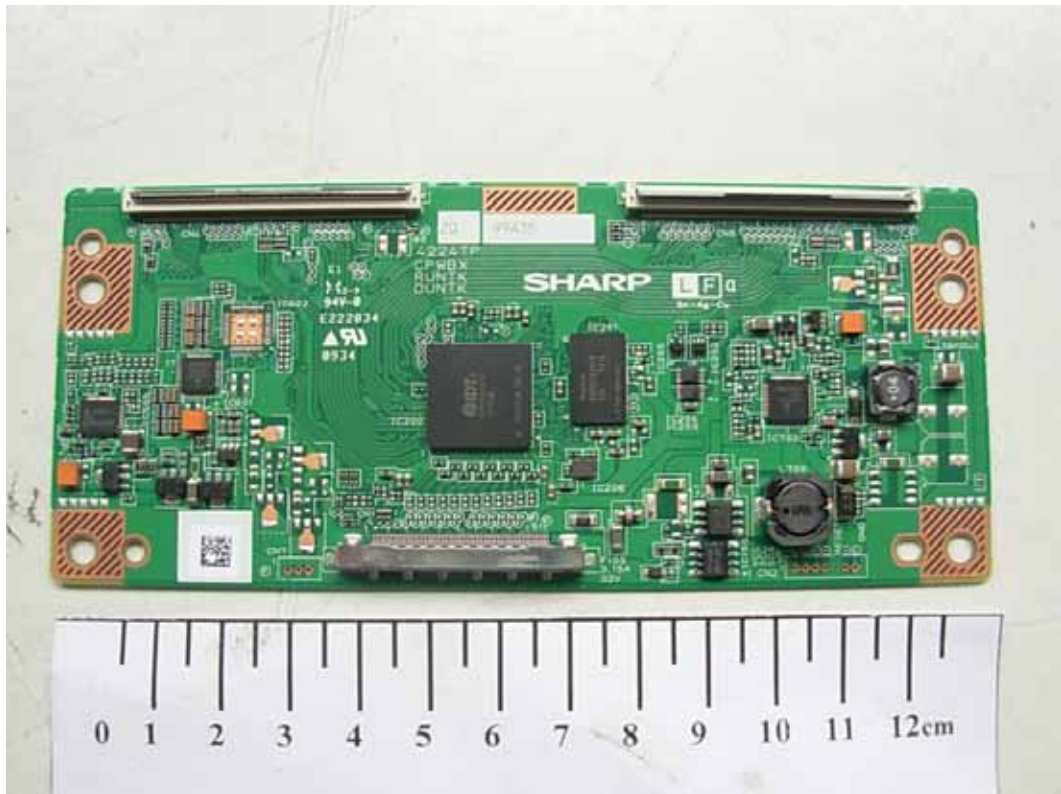


FIGURE 13  
LCD TV (M/N: LTDN40V68NUS)  
LCD PANEL MAIN BOARD (SOLDERED SIDE)

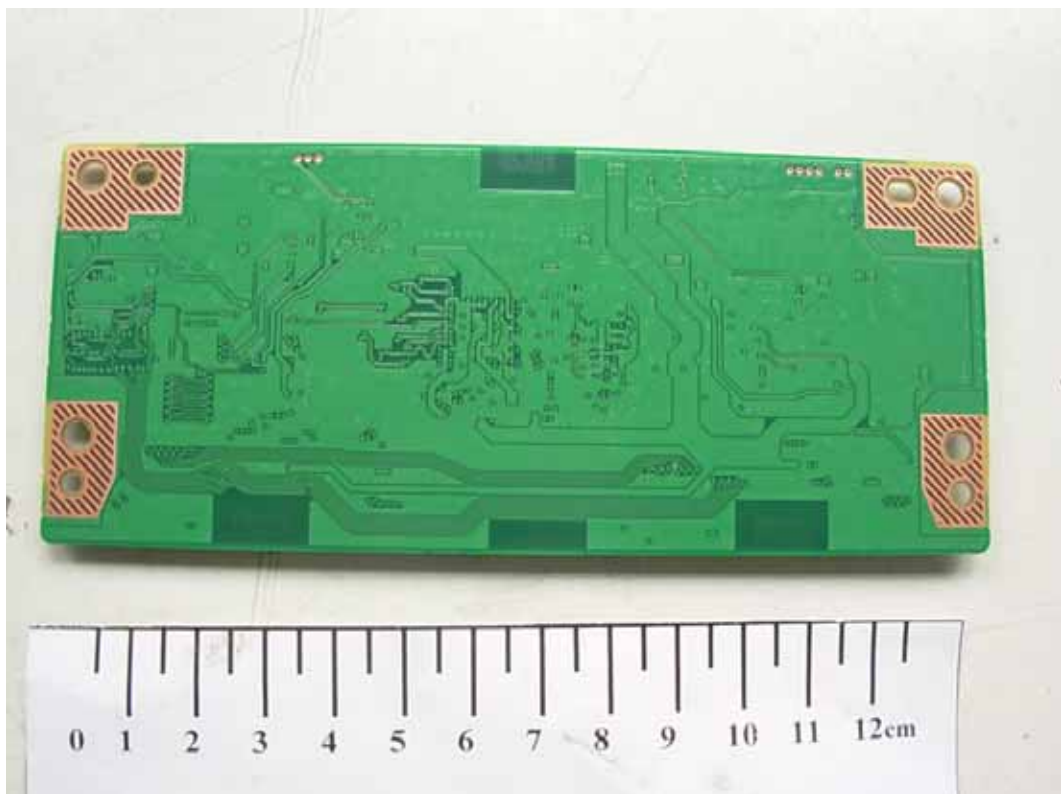


FIGURE 14  
LCD TV (M/N: LTDN40V68NUS)  
CHIP ON LCD PANEL MAIN BOARD



FIGURE 15  
LCD TV (M/N: LTDN40V68NUS)  
LABEL ON LCD PANEL

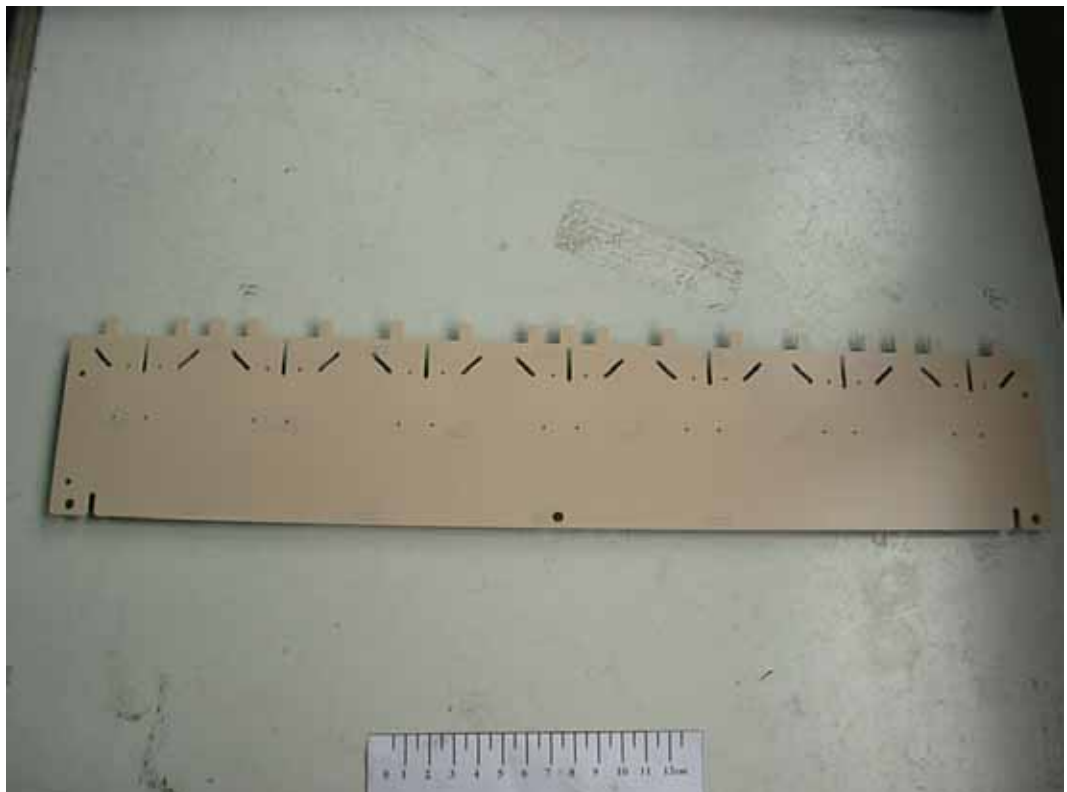




*FIGURE 16*  
*LCD TV (M/N: LTDN40V68NUS)*  
*HIGH VOLTAGE SIGNAL BOARD #1 (COMPONENT SIDE)*



*FIGURE 17*  
*LCD TV (M/N: LTDN40V68NUS)*  
*HIGH VOLTAGE SIGNAL BOARD #1 (SOLDERED SIDE)*



*FIGURE 18*  
*LCD TV (M/N: LTDN40V68NUS)*  
*HIGH VOLTAGE SIGNAL BOARD #2 (COMPONENT SIDE)*



*FIGURE 19*  
*LCD TV (M/N: LTDN40V68NUS)*  
*HIGH VOLTAGE SIGNAL BOARD #2 (SOLDERED SIDE)*

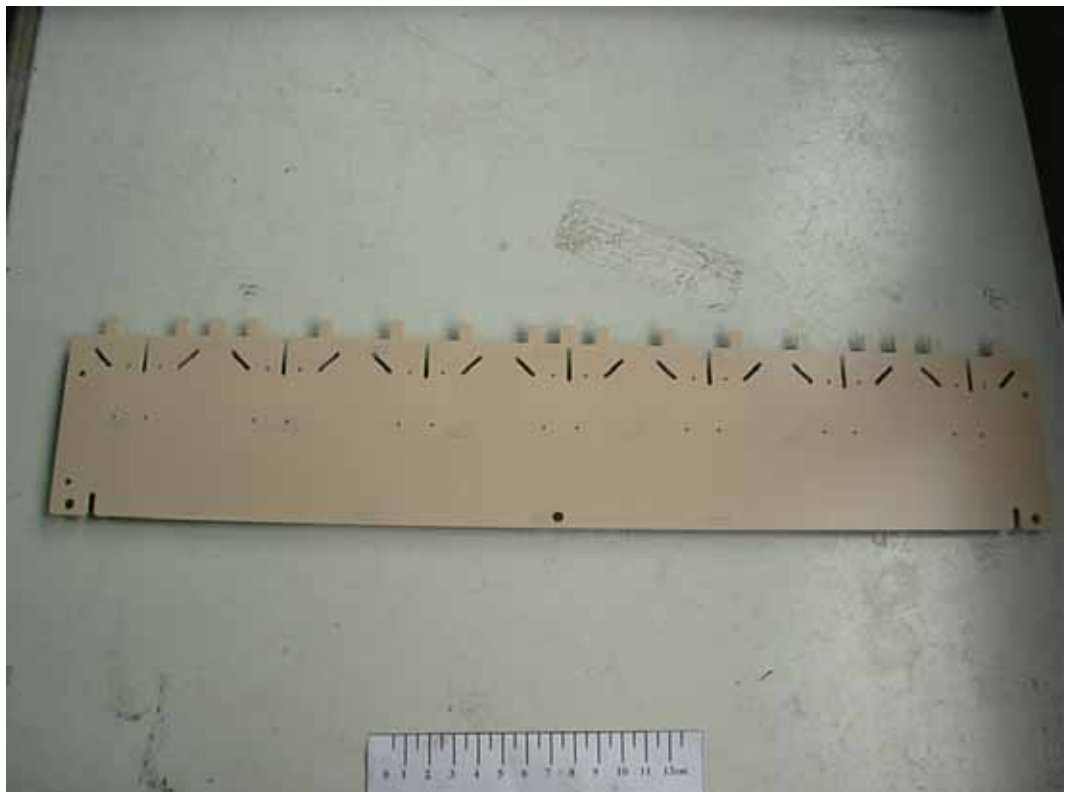


FIGURE 20  
LCD TV (M/N: LTDN40V68NUS)  
DEBUG #1



FIGURE 21  
LCD TV (M/N: LTDN40V68NUS)  
DEBUG #2



FIGURE 22  
LCD TV (M/N: LTDN40V68NUS)  
DEBUG #3

