

FIGURE 1
LCD TV (M/N: DX-L40-10A)
COVER REMOVED



FIGURE 2
LCD TV (M/N: DX-L40-10A)
POWER BOARD (COMPONENT SIDE)



FIGURE 3
LCD TV (M/N: DX-L40-10A)
POWER BOARD (SOLDERED SIDE)

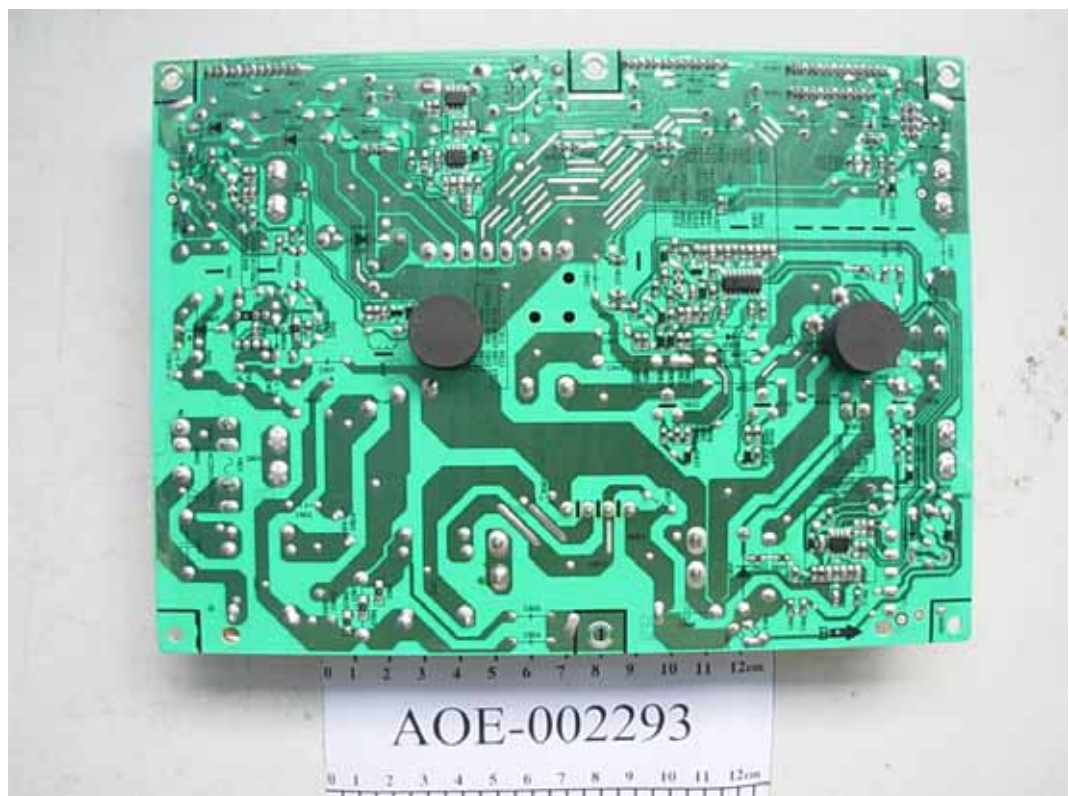


FIGURE 4
LCD TV (M/N: DX-L40-10A)
MAIN BOARD (COMPONENT SIDE)



FIGURE 5
LCD TV (M/N: DX-L40-10A)
MAIN BOARD (SOLDERED SIDE)



FIGURE 6
LCD TV (M/N: DX-L40-10A)
CHIP ON MAIN BOARD



FIGURE 7
LCD TV (M/N: DX-L40-10A)
CRYSTAL ON MAIN BOARD



FIGURE 8
LCD TV (M/N: DX-L40-10A)
LABEL ON TUNER



FIGURE 9
LCD TV (M/N: DX-L40-10A)
LED BOARD (COMPONENT SIDE)

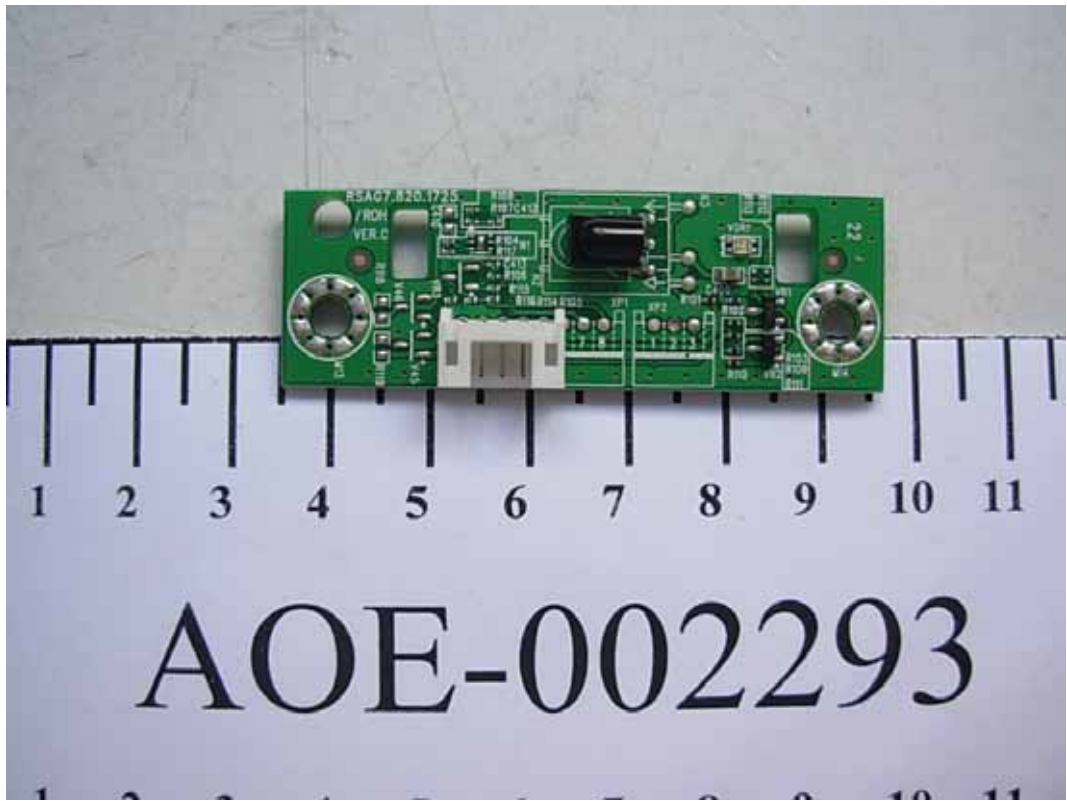


FIGURE 10
LCD TV (M/N: DX-L40-10A)
LED BOARD (SOLDERED SIDE)

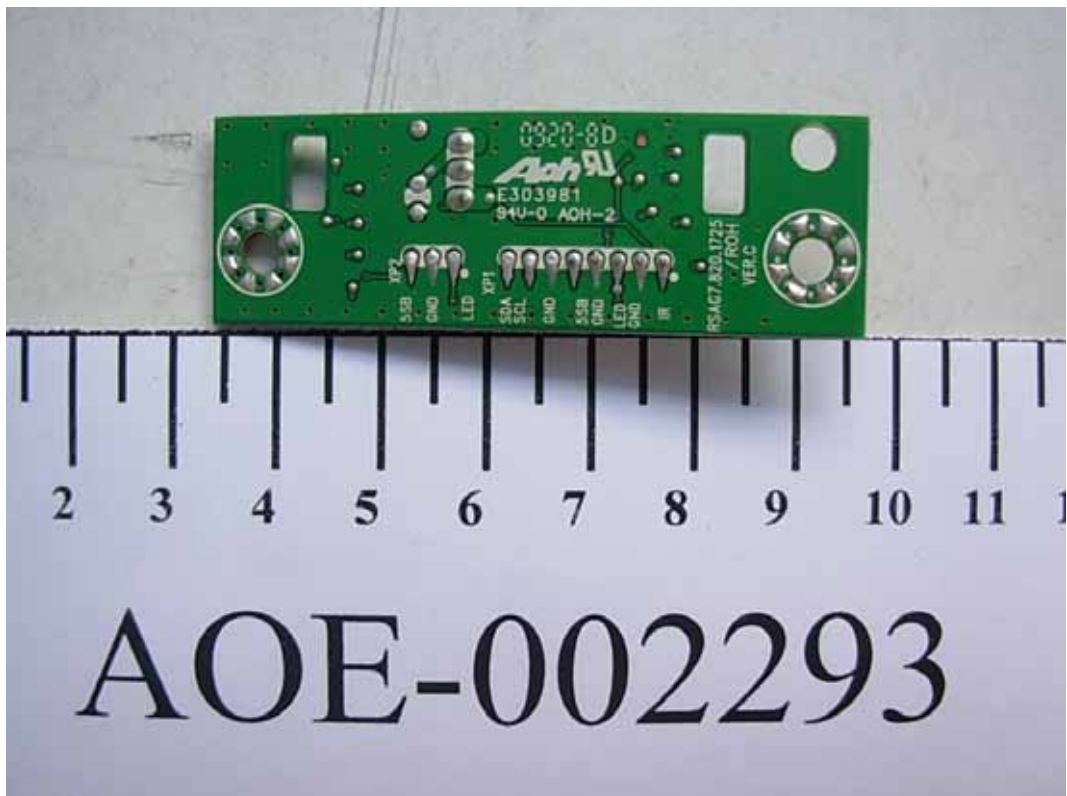


FIGURE 11
LCD TV (M/N: DX-L40-10A)
BUTTON BOARD (COMPONENT SIDE)

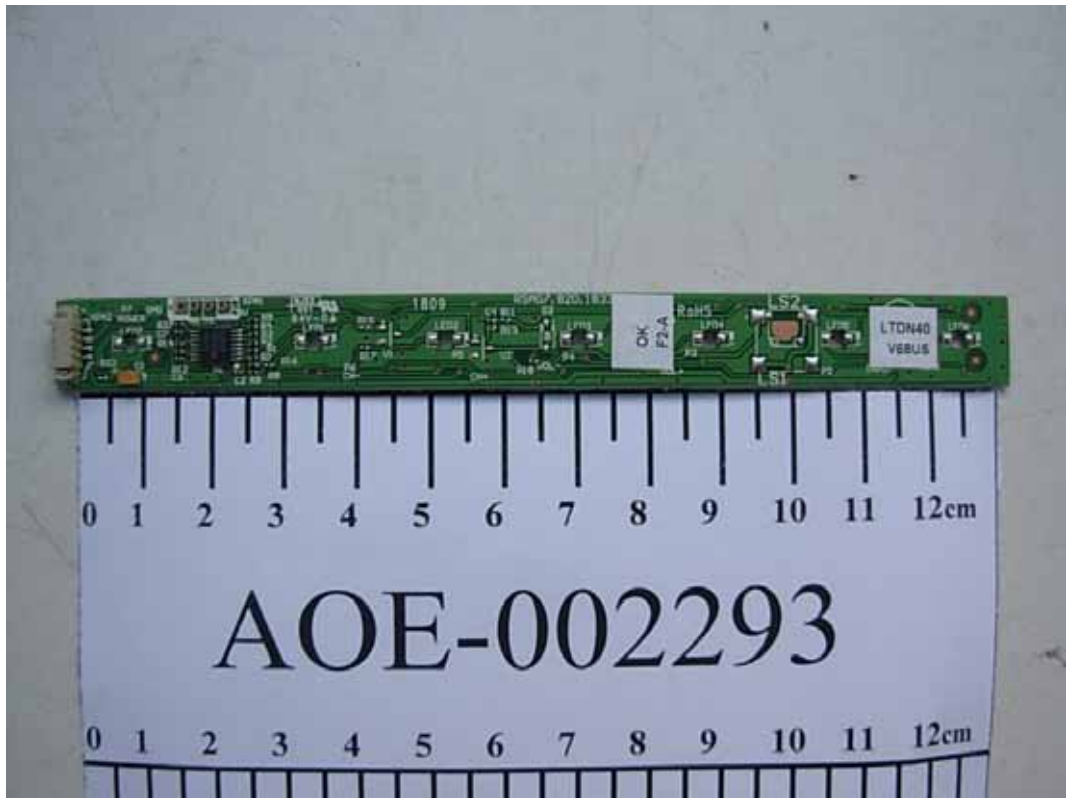


FIGURE 12
LCD TV (M/N: DX-L40-10A)
BUTTON BOARD (SOLDERED SIDE)



FIGURE 13
LCD TV (M/N: DX-L40-10A)
PANEL BOARD #1



FIGURE 14
LCD TV (M/N: DX-L40-10A)
PANEL BOARD #1



FIGURE 15
LCD TV (M/N: DX-L40-10A)
LABEL ON PANEL



FIGURE 16
LCD TV (M/N: DX-L40-10A)
DEBUG 1



FIGURE 17
LCD TV (M/N: DX-L40-10A)
DEBUG 2

