

FIGURE 1
LCD TV (M/N: LTDN42T18GUS)
COVER REMOVED



FIGURE 2
LCD TV (M/N: LTDN42T18GUS)
MAIN BOARD (COMPONENT SIDE)



FIGURE 3
LCD TV (M/N: LTDN42T18GUS)
MAIN BOARD (SOLDERED SIDE)

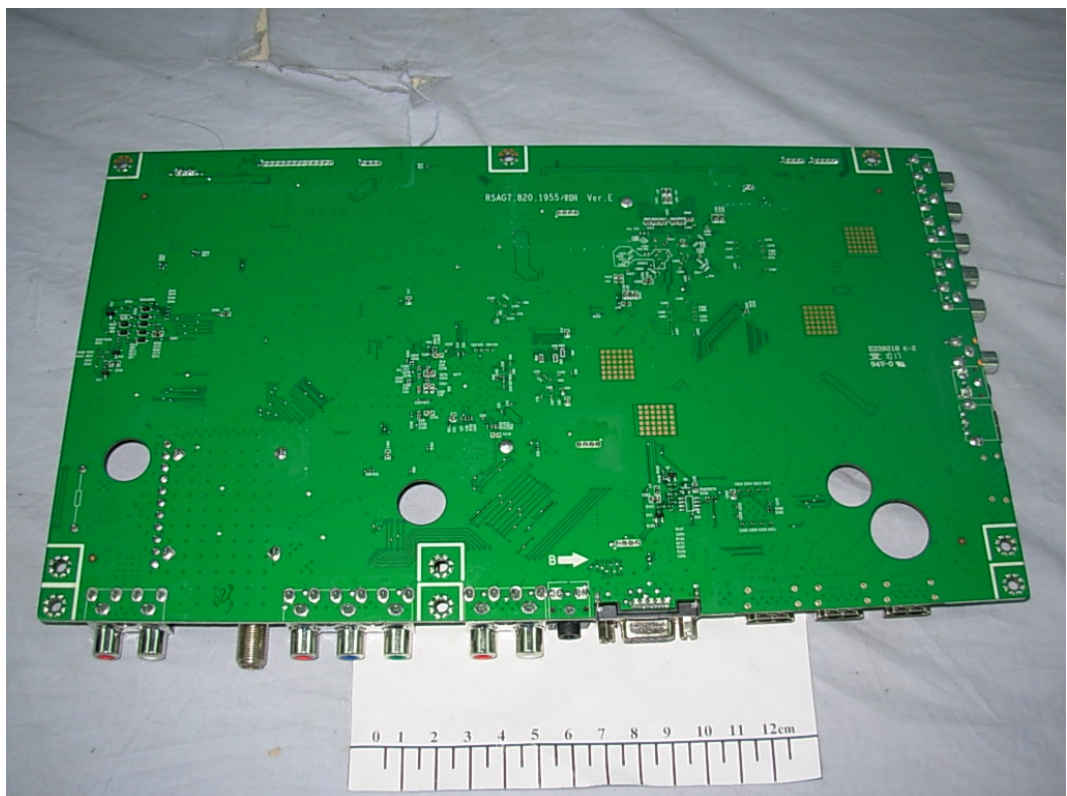


FIGURE 4
 LCD TV (M/N: LTDN42T18GUS)
 CRYSTAL1 & CHIP1 ON MAIN BOARD

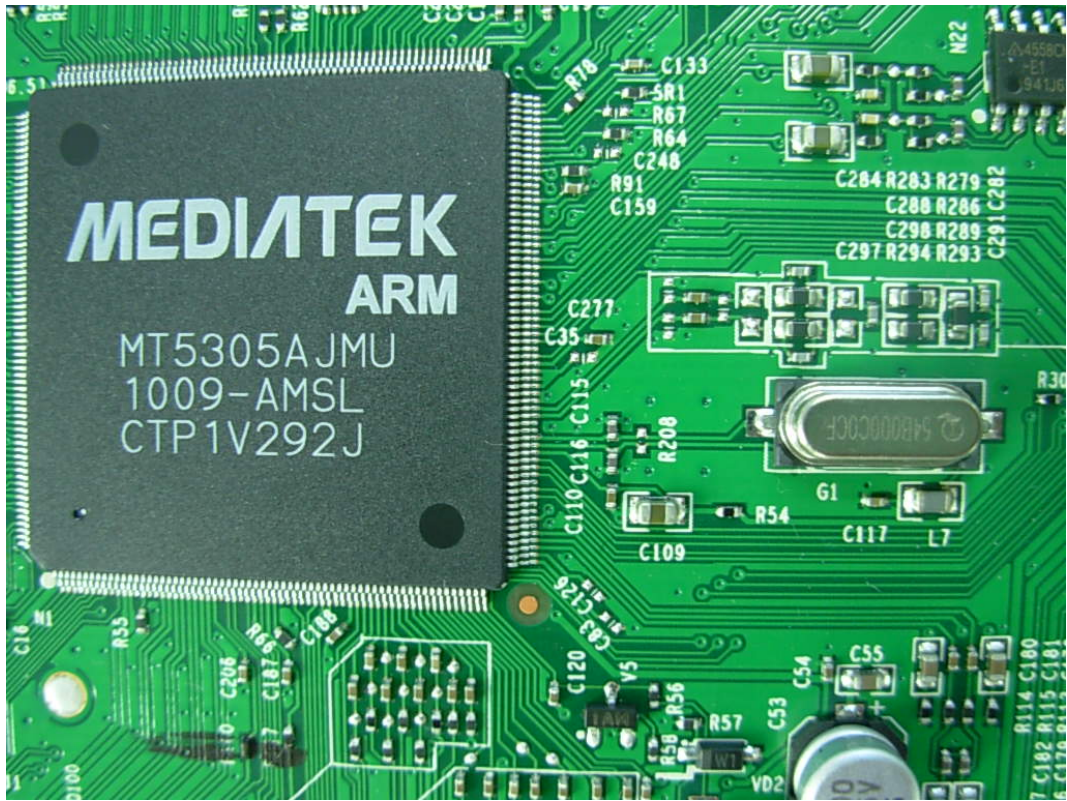


FIGURE 5
 LCD TV (M/N: LTDN42T18GUS)
 CRYSTAL2 & CHIP2 ON MAIN BOARD

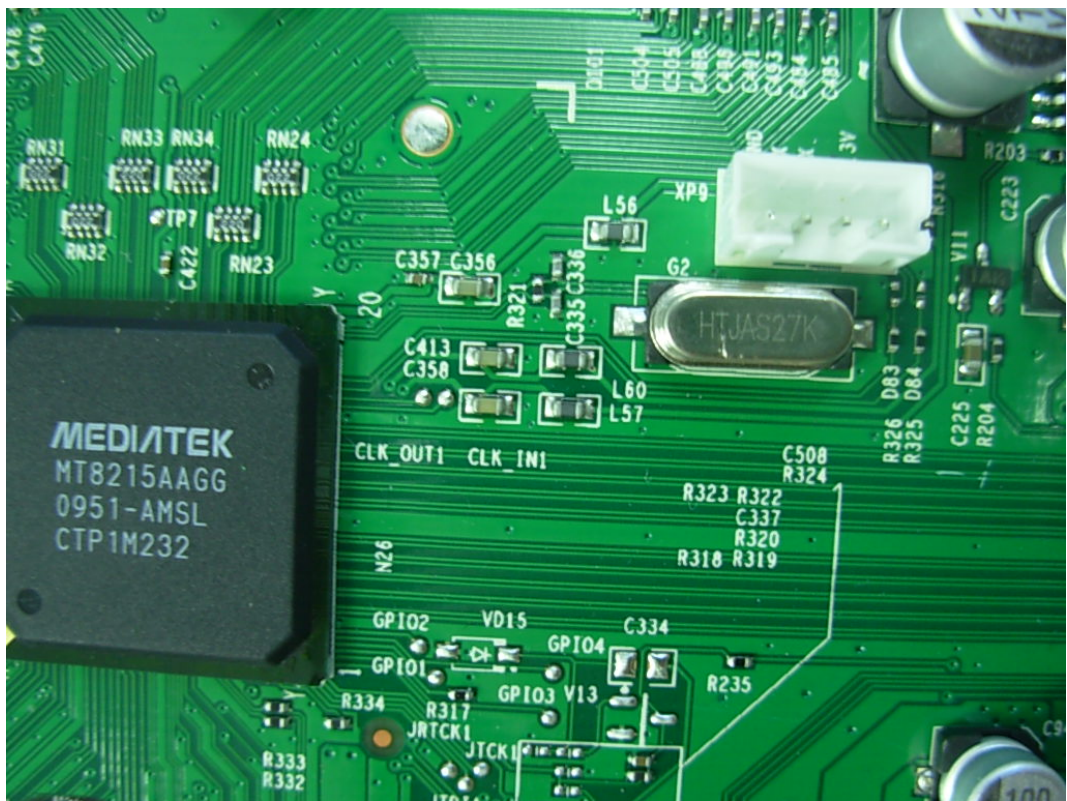


FIGURE 6
LCD TV (M/N: LTDN42T18GUS)
TUNER



FIGURE 7
LCD TV (M/N: LTDN42T18GUS)
POWER BOARD (COMPONENT SIDE)

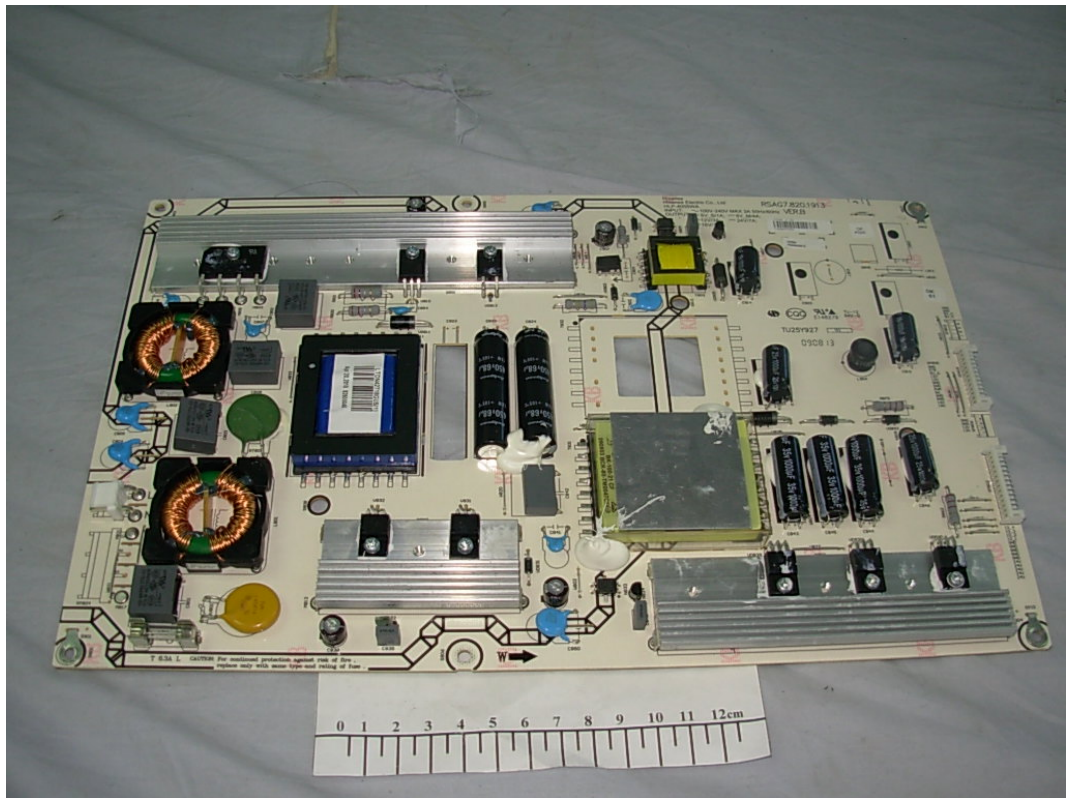


FIGURE 8
LCD TV (M/N: LTDN42T18GUS)
POWER BOARD (SOLDERED SIDE)

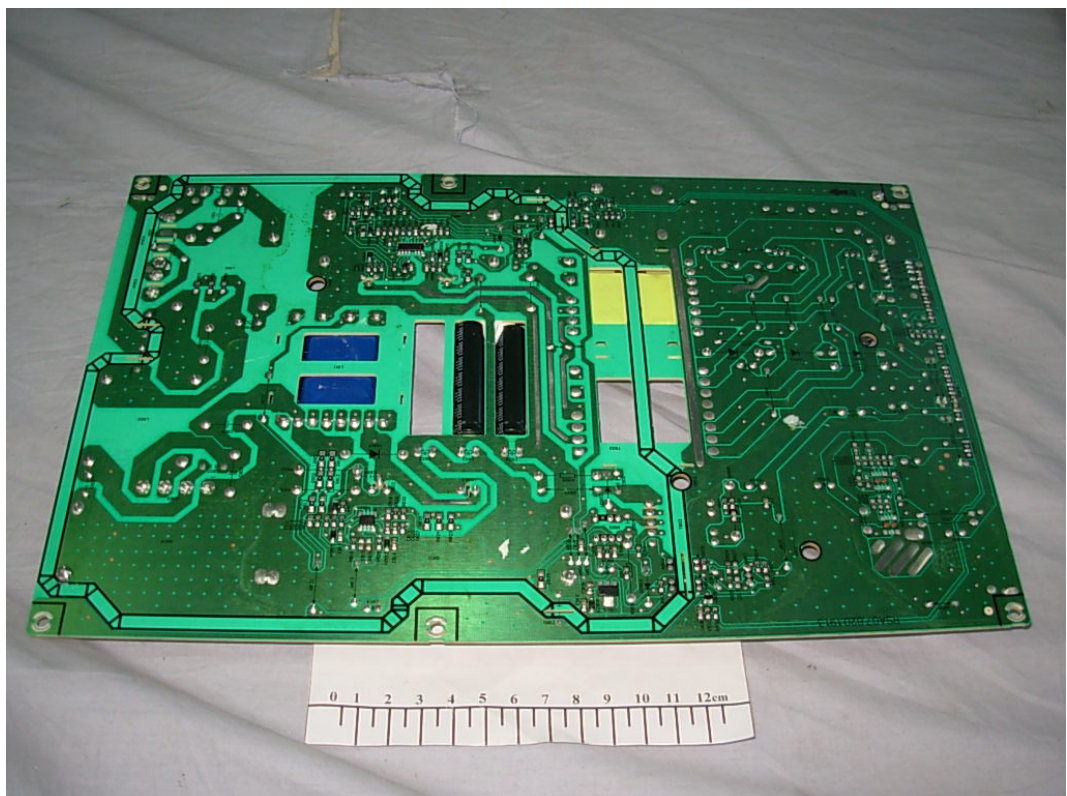


FIGURE 9
LCD TV (M/N: LTDN42T18GUS)
IR BOARD (COMPONENT SIDE)

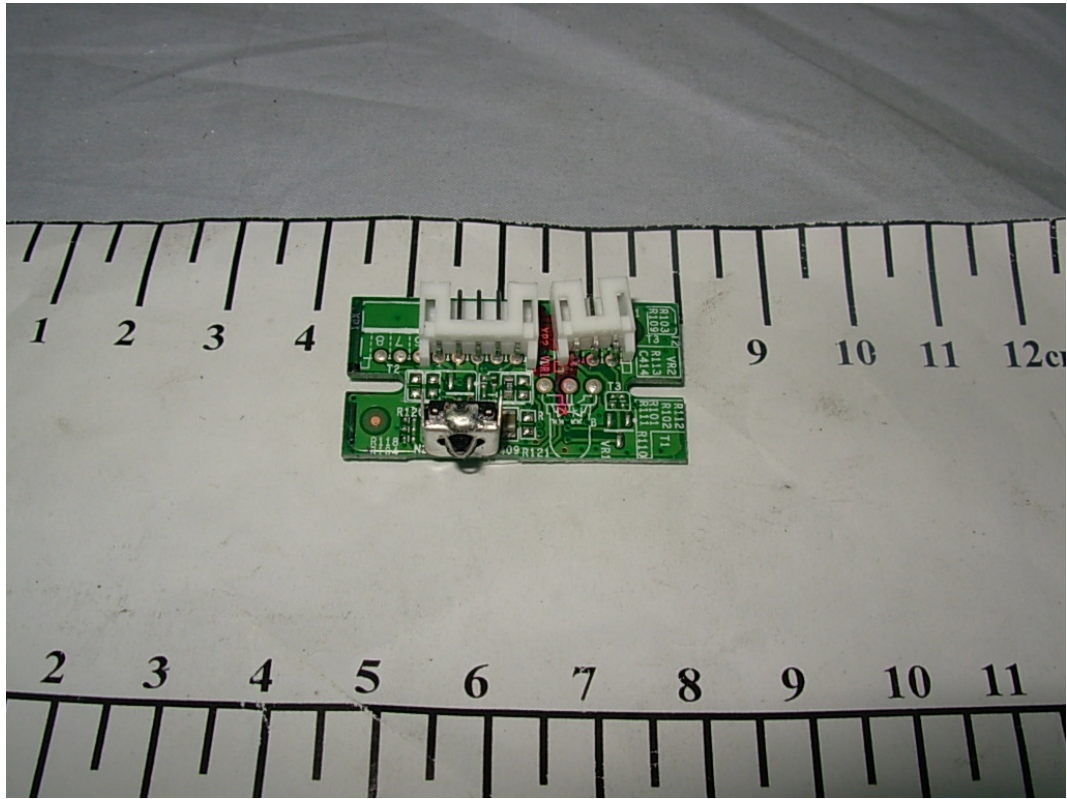


FIGURE 10
LCD TV (M/N: LTDN42T18GUS)
IR BOARD (SOLDERED SIDE)

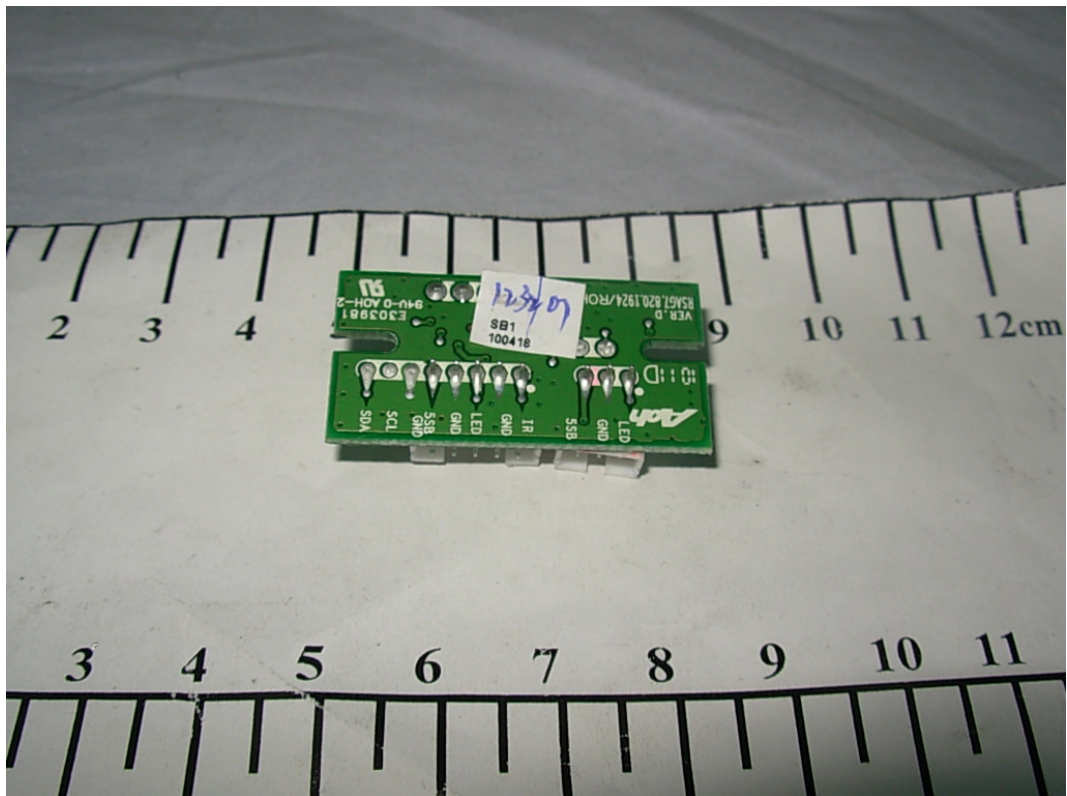


FIGURE 11
LCD TV (M/N: LTDN42T18GUS)
KEY BOARD (COMPONENT SIDE)

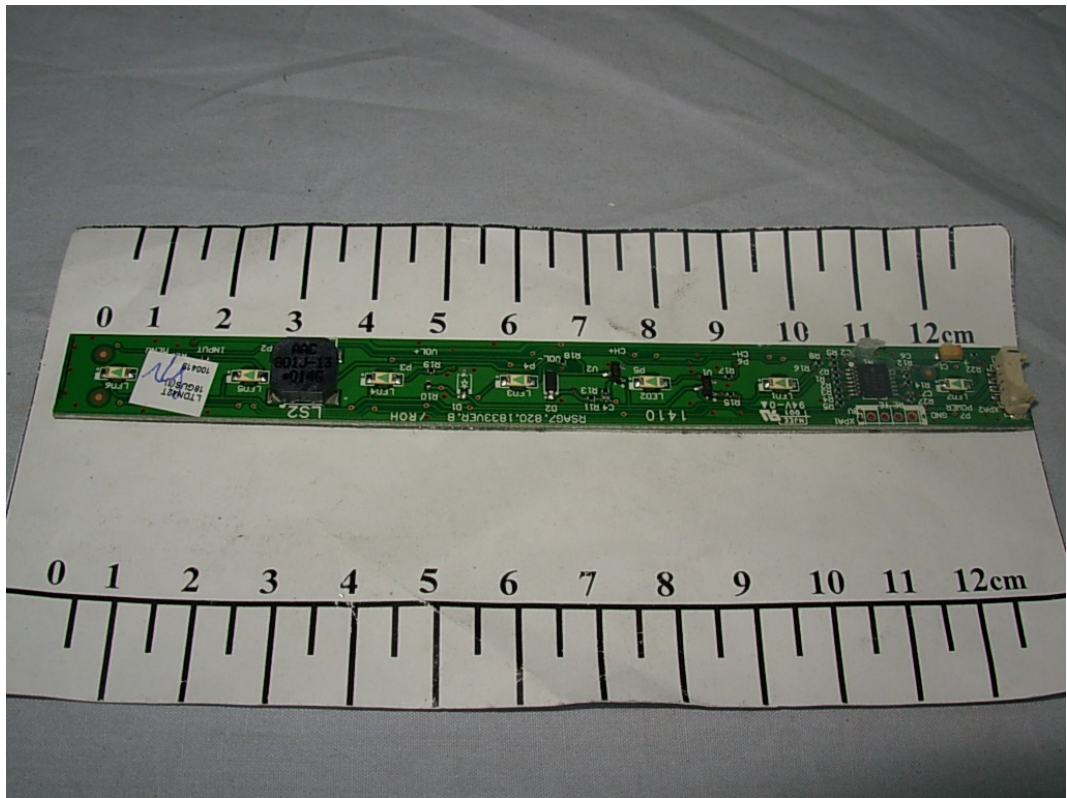


FIGURE 12
LCD TV (M/N: LTDN42T18GUS)
KEY BOARD (SOLDERED SIDE)

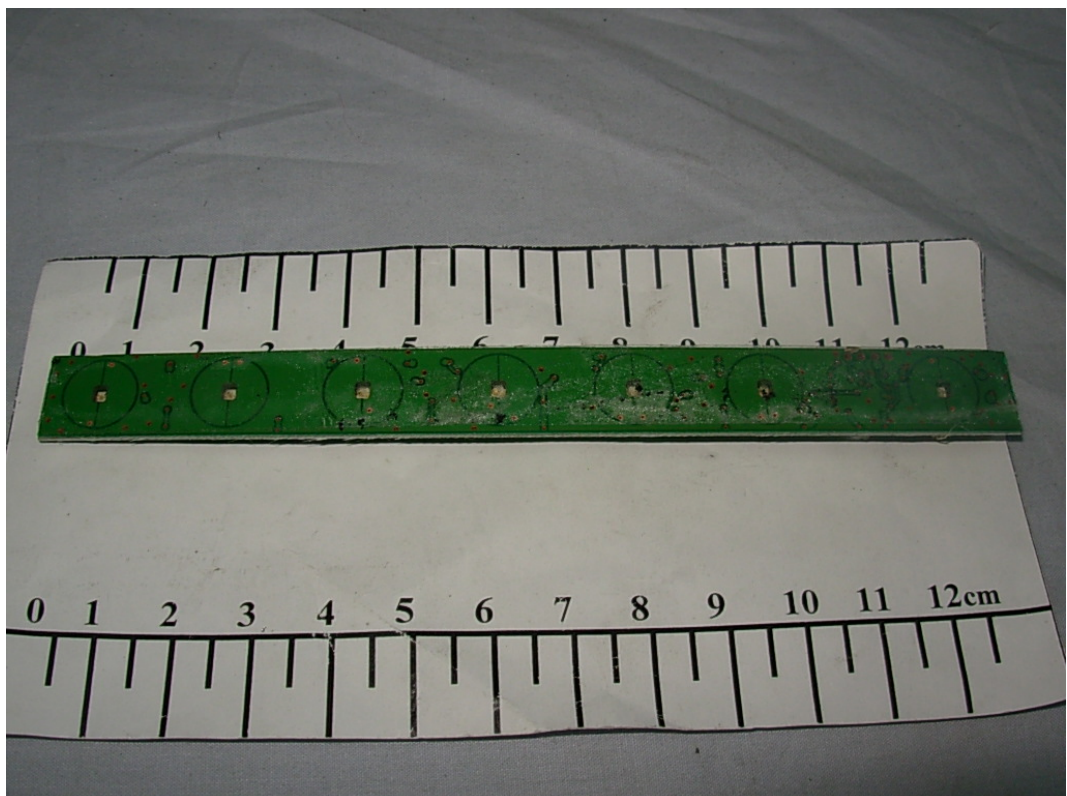


FIGURE 13
LCD TV (M/N: LTDN42T18GUS)
LCD PANEL BOARD (COMPONENT SIDE)

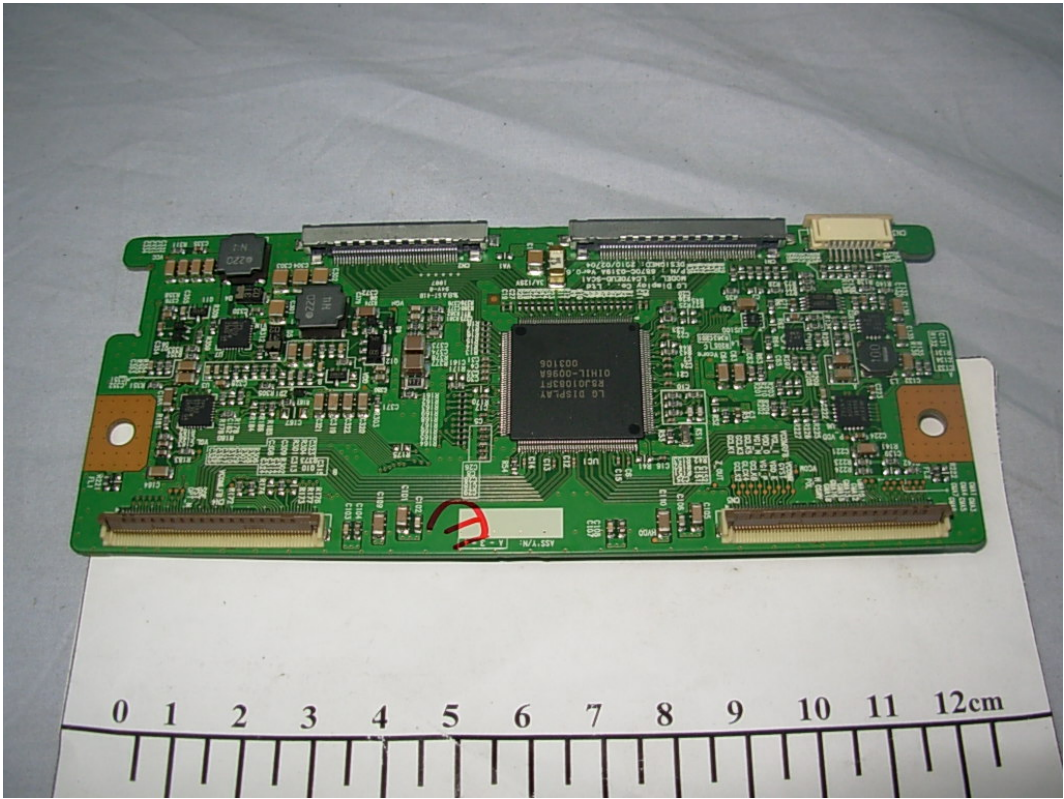


FIGURE 14
LCD TV (M/N: LTDN42T18GUS)
LCD PANEL BOARD (SOLDERED SIDE)

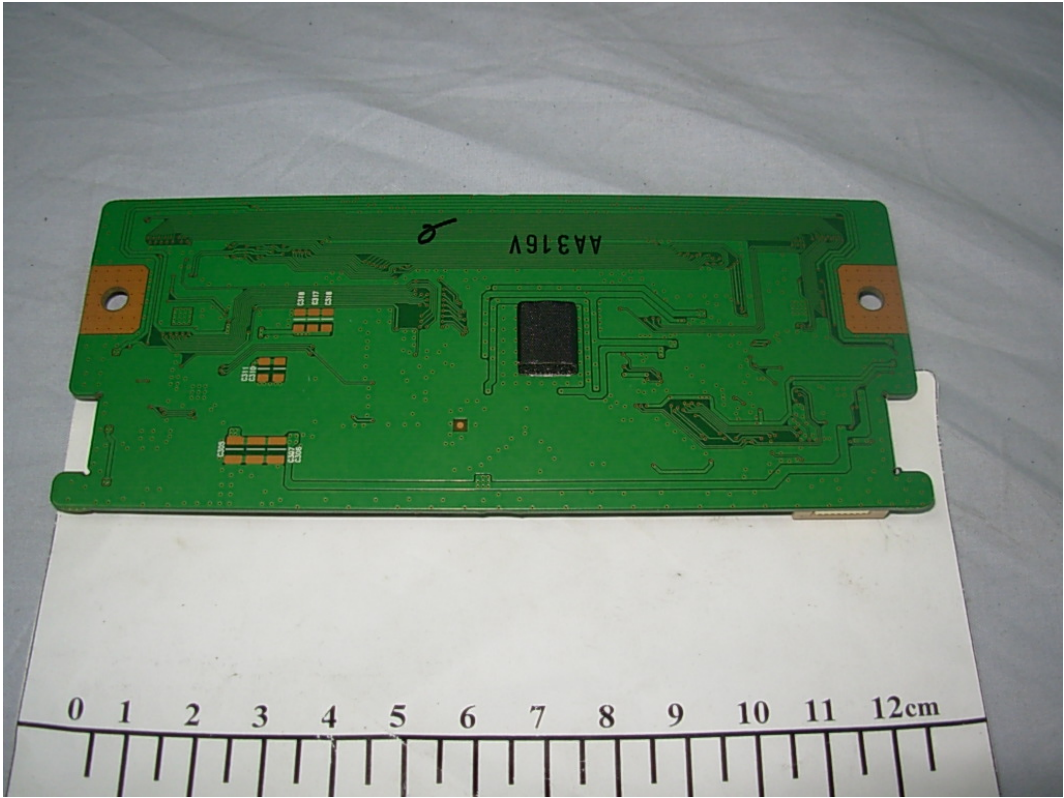


FIGURE 15
LCD TV (M/N: LTDN42T18GUS)
CHIP ON LCD PANEL BOARD



FIGURE 16
LCD TV (M/N: LTDN42T18GUS)
LCD PANEL LABEL

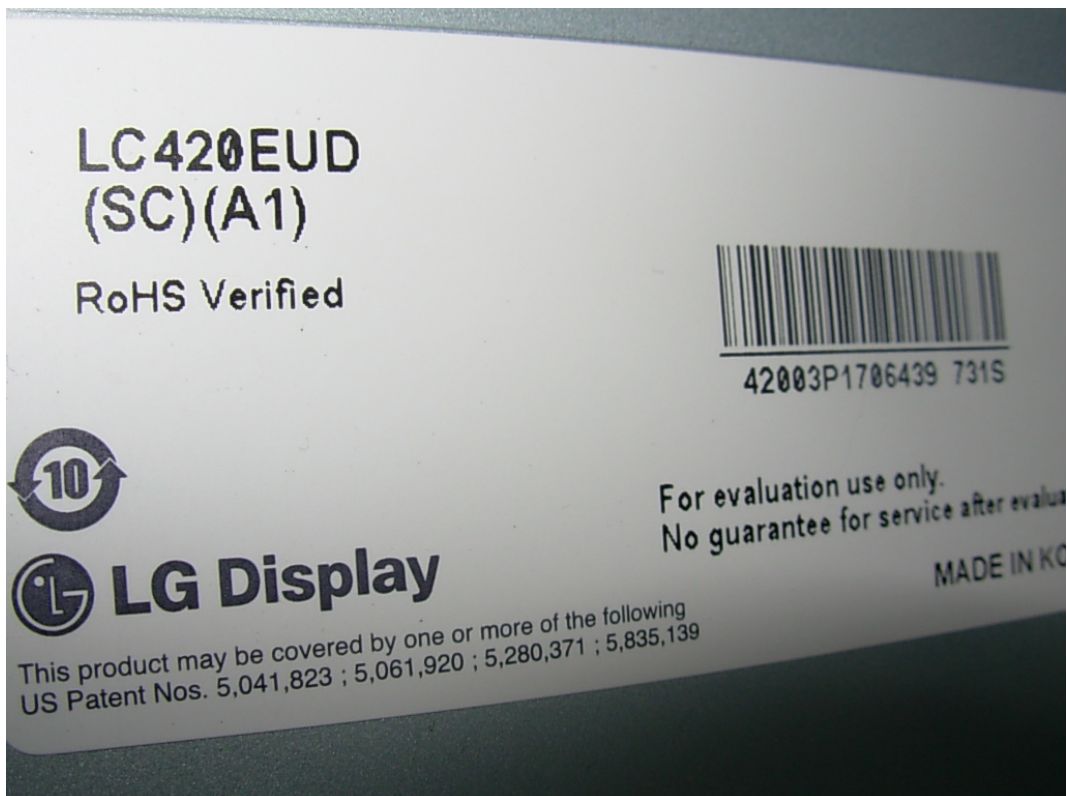


FIGURE 17
LCD TV (M/N: LTDN42T18GUS)
HIGH VOLTAGE SIGNAL BOARD (COMPONENT SIDE)

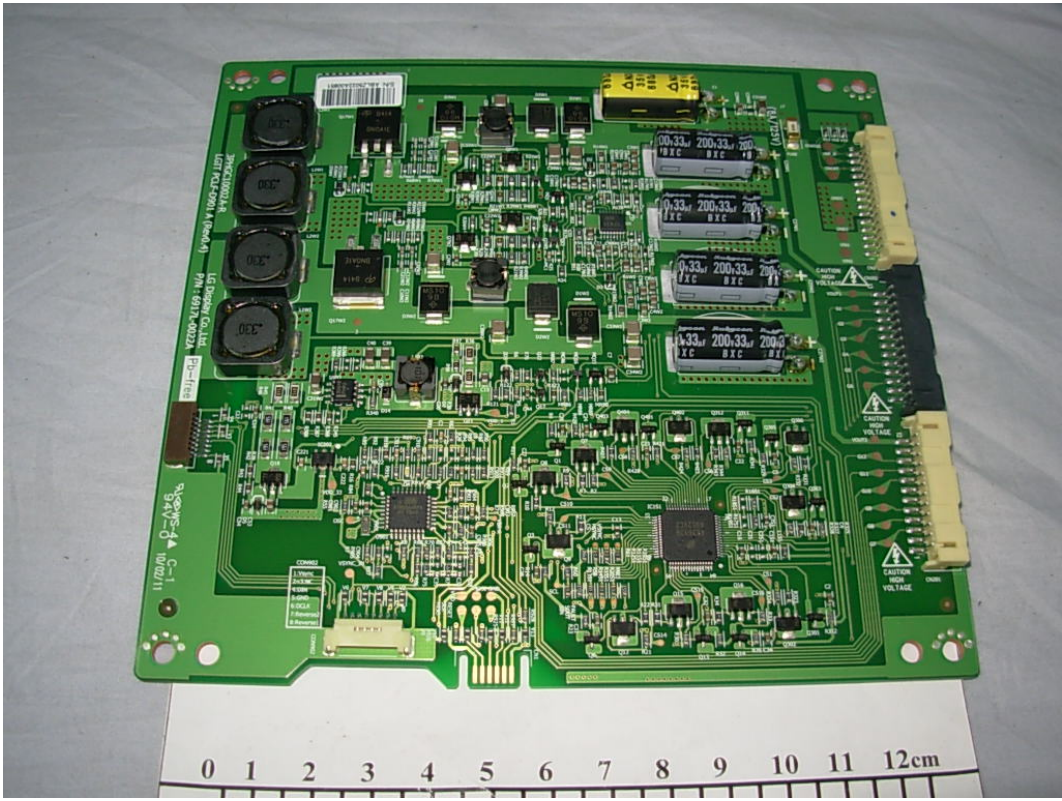


FIGURE 18
LCD TV (M/N: LTDN42T18GUS)
HIGH VOLTAGE SIGNAL BOARD (SOLDERED SIDE)

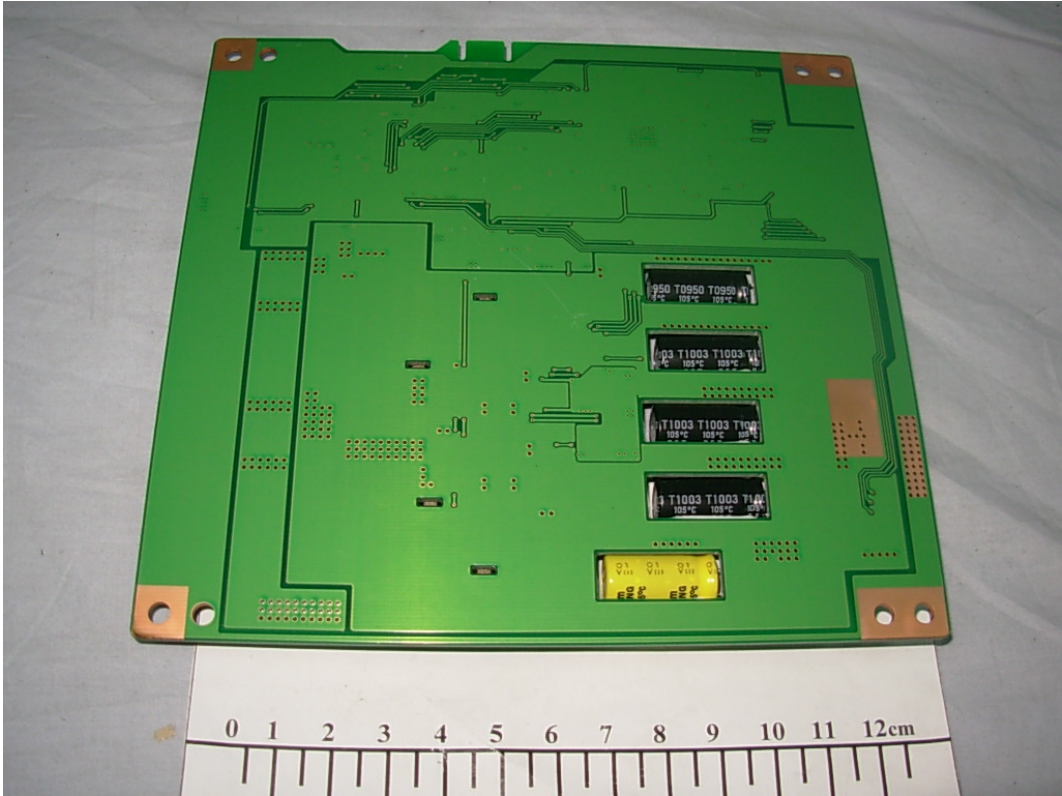


FIGURE 19
LCD TV (M/N: LTDN42T18GUS)
DEBUG #1

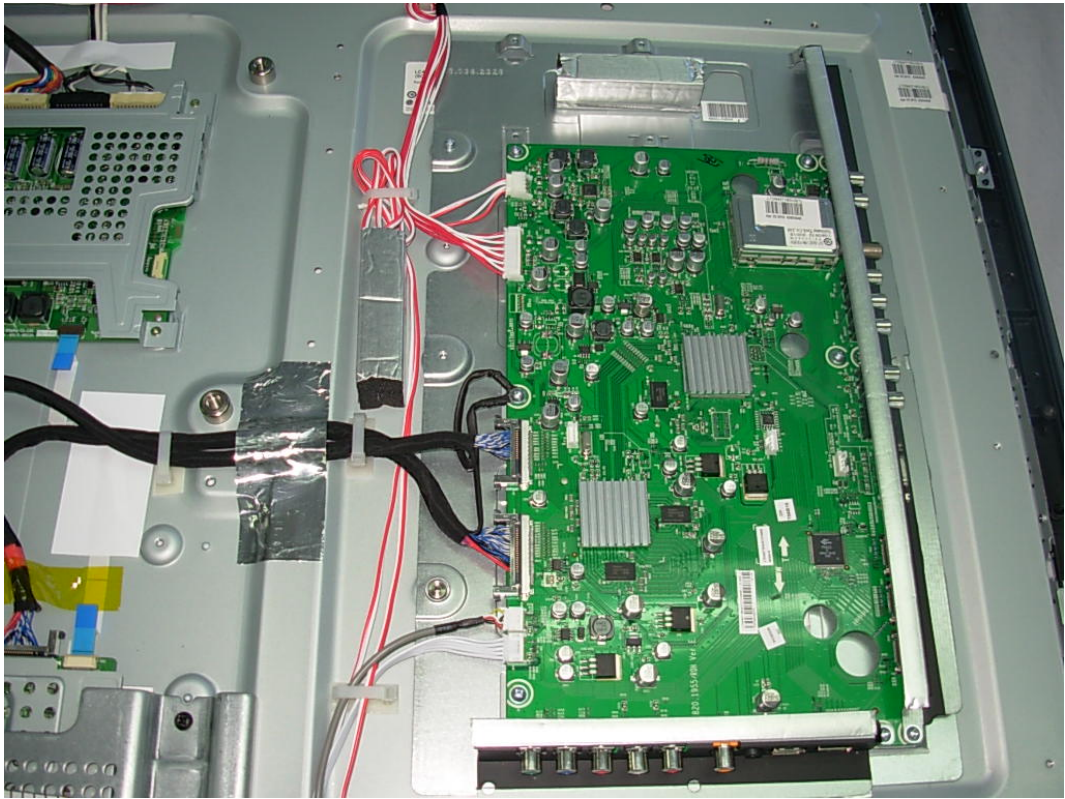


FIGURE 20
LCD TV (M/N: LTDN42T18GUS)
DEBUG #2

