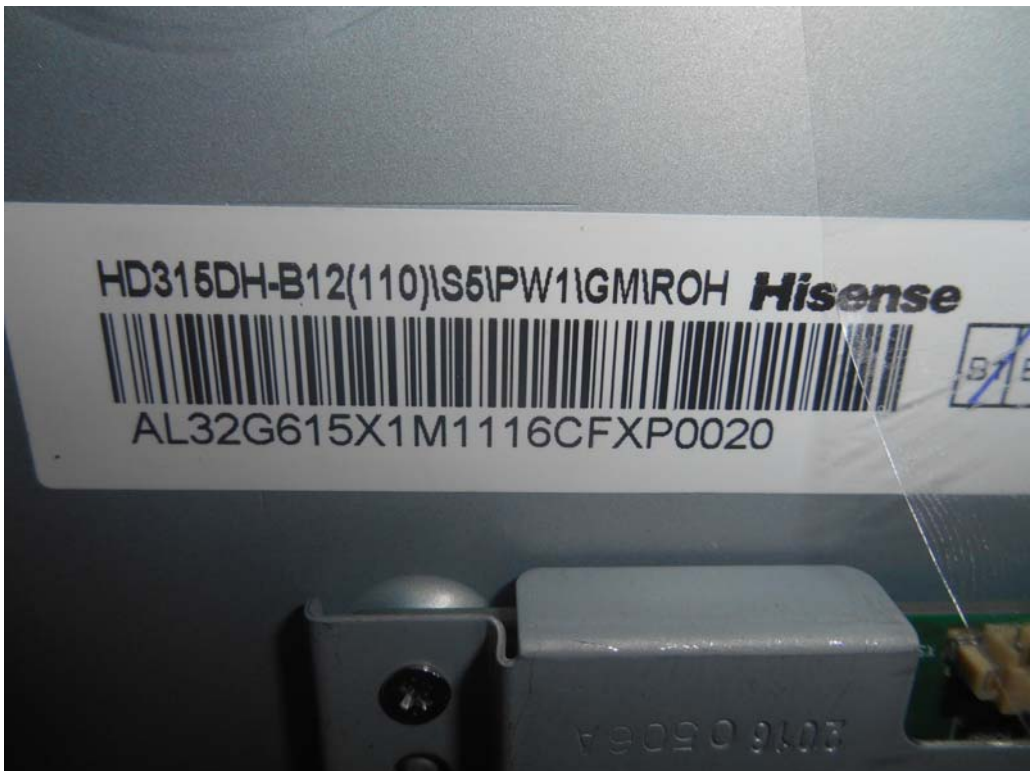


FIGURE 1  
LED LCD TV (M/N: 32H5C)  
COVER REMOVED



FIGURE 2  
LED LCD TV (M/N: 32H5C)  
LCD PANEL LABEL



*FIGURE 3*  
*LED LCD TV (M/N: 32H5C)*  
*MAIN BOARD (COMPONENT SIDE)*



*FIGURE 4*  
*LED LCD TV (M/N: 32H5C)*  
*MAIN BOARD (SOLDERED SIDE)*

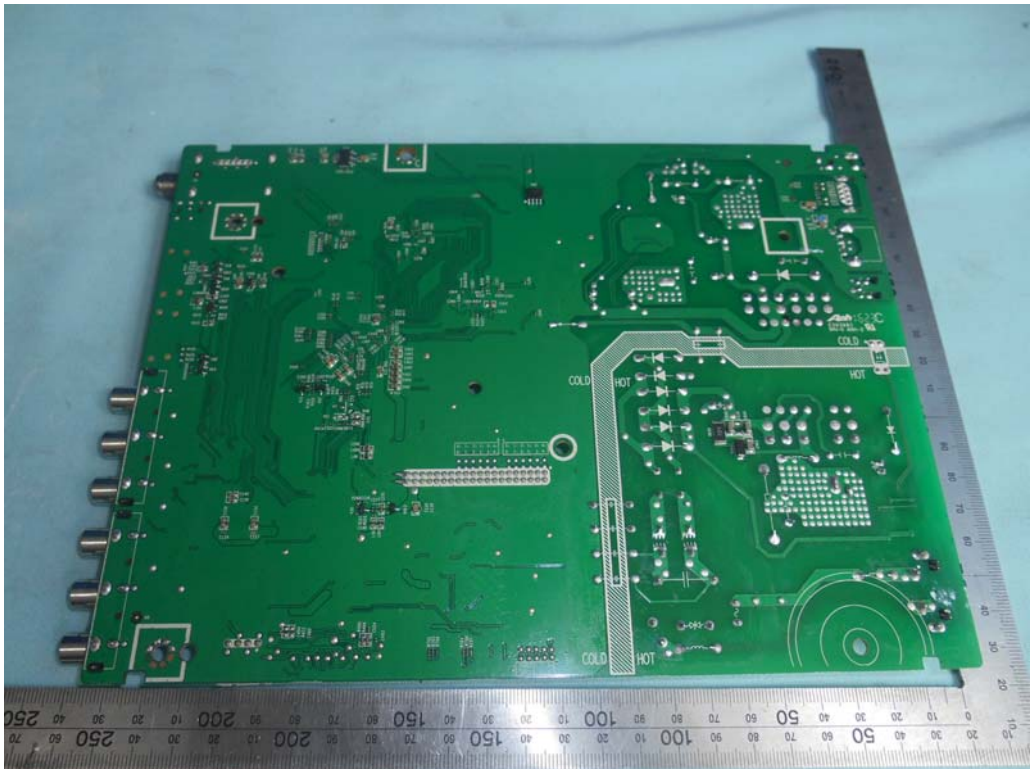


FIGURE 5  
LED LCD TV (M/N: 32H5C)  
CHIP & CRYSTAL ON MAIN BOARD

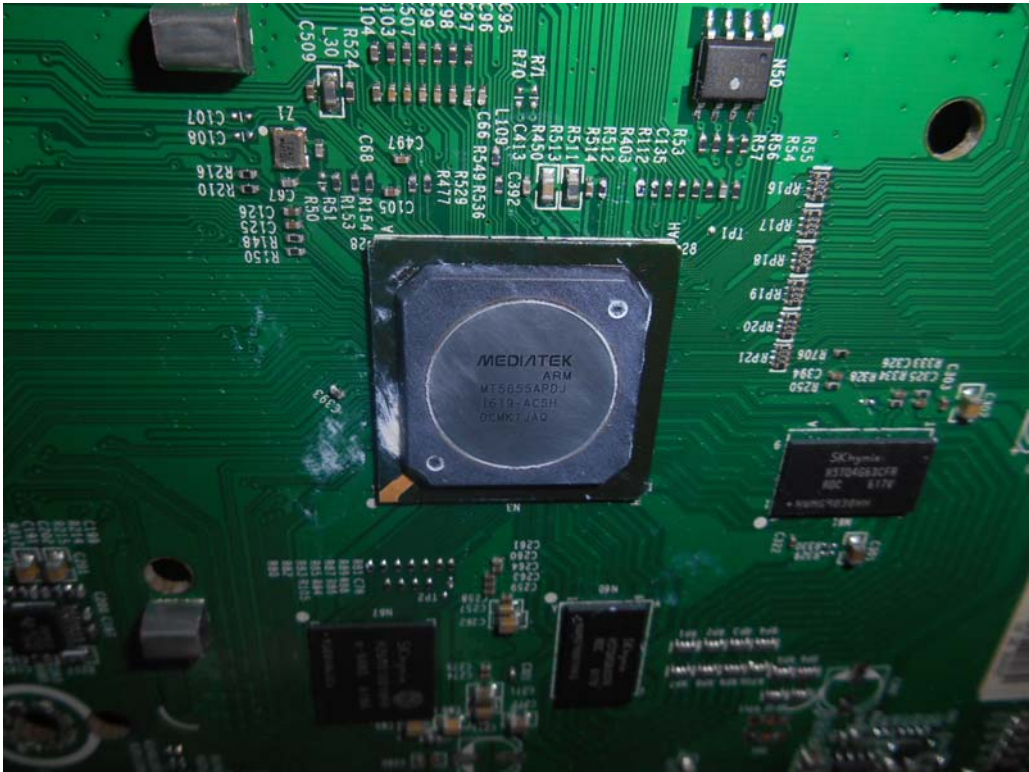
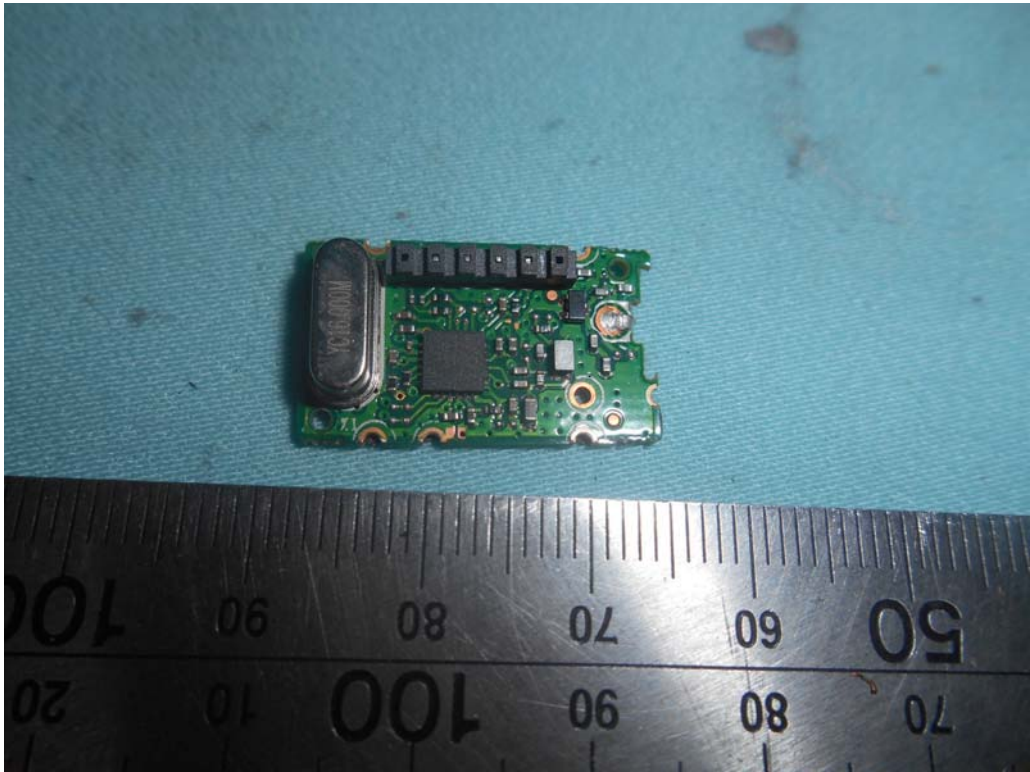


FIGURE 6  
LED LCD TV (M/N: 32H5C)  
TUNER



*FIGURE 7*  
*LED LCD TV (M/N: 32H5C)*  
*TUNER BOARD (COMPONENT SIDE)*



*FIGURE 8*  
*LED LCD TV (M/N: 32H5C)*  
*TUNER BOARD (SOLDERED SIDE)*

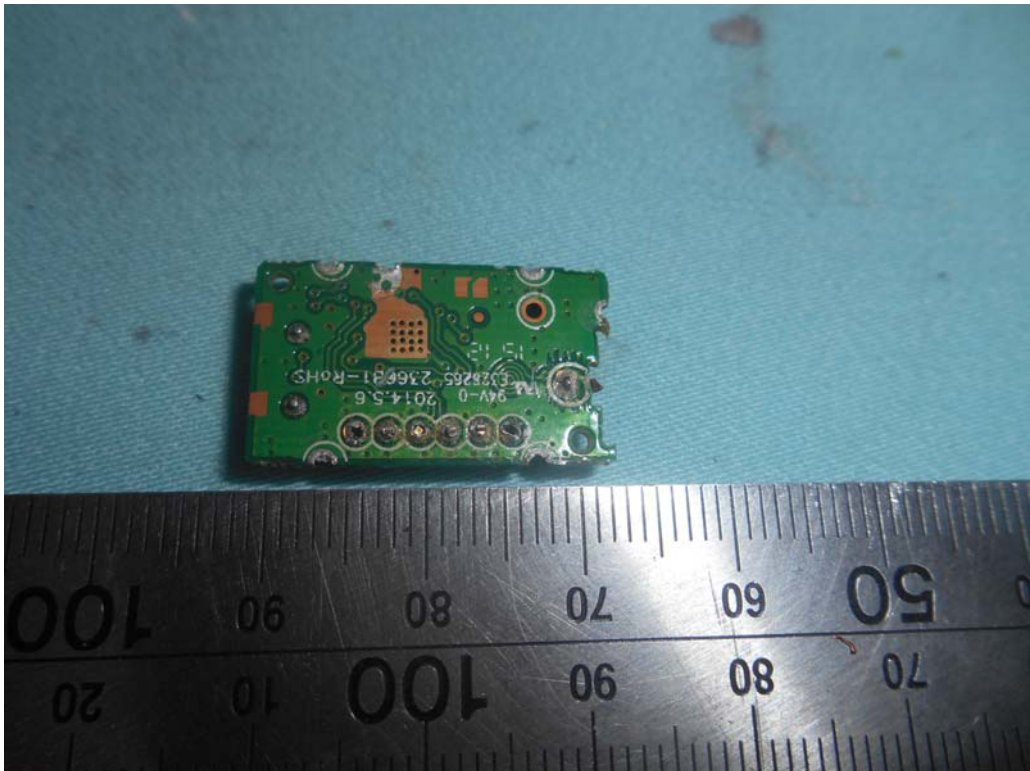


FIGURE 9  
LED LCD TV (M/N: 32H5C)  
TUNER & CRYSTAL



FIGURE 10  
LED LCD TV (M/N: 32H5C)  
PANEL BOARD (COMPONENT SIDE)

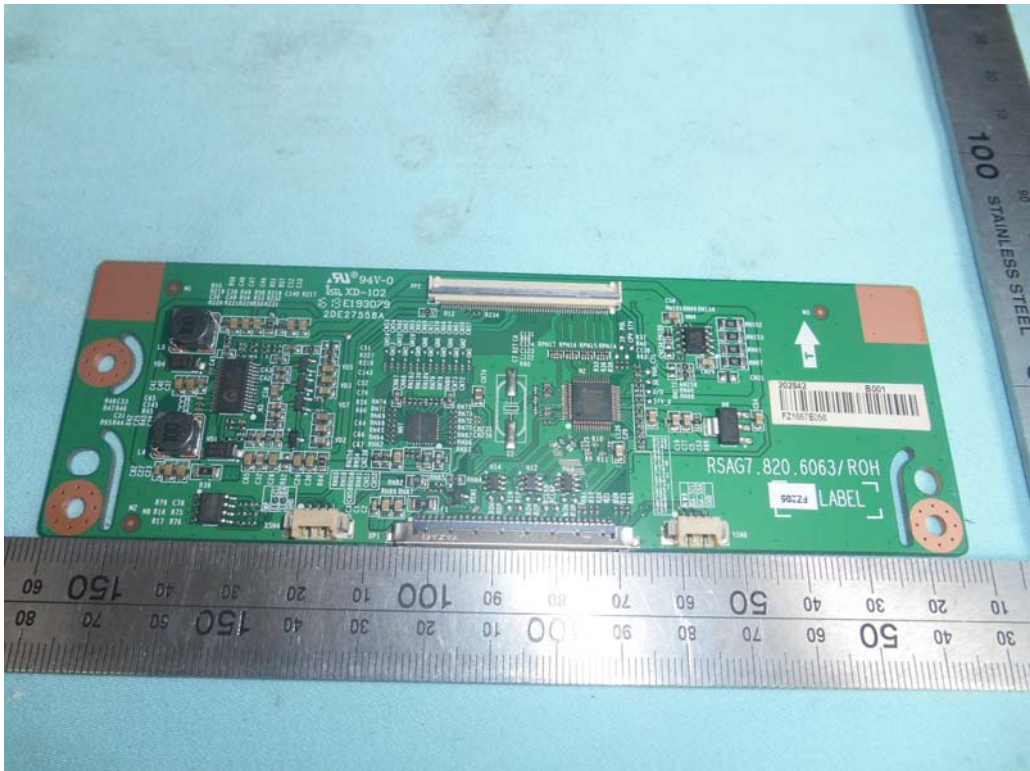


FIGURE 11  
LED LCD TV (M/N: 32H5C)  
PANEL BOARD (SOLDERED SIDE)



FIGURE 12  
LED LCD TV (M/N: 32H5C)  
CHIP & CRYSTAL ON PANEL BOARD

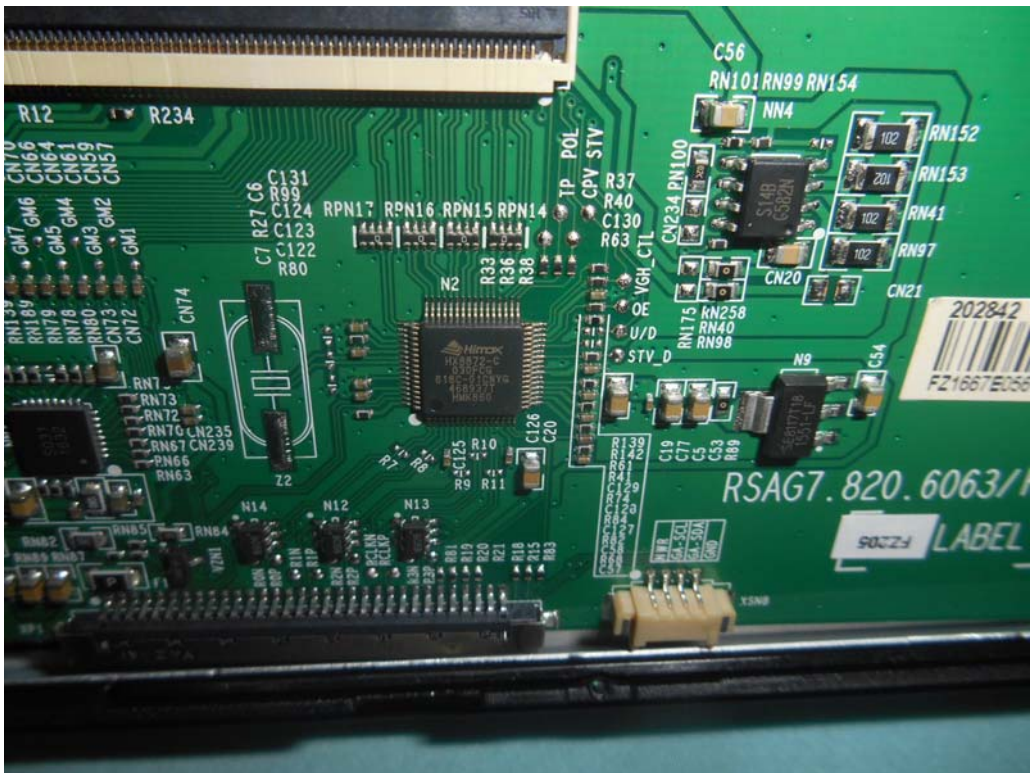


FIGURE 13  
LED LCD TV (M/N: 32H5C)  
RF BOARD (COMPONENT SIDE)



FIGURE 14  
LED LCD TV (M/N: 32H5C)  
RF BOARD (SOLDERED SIDE)

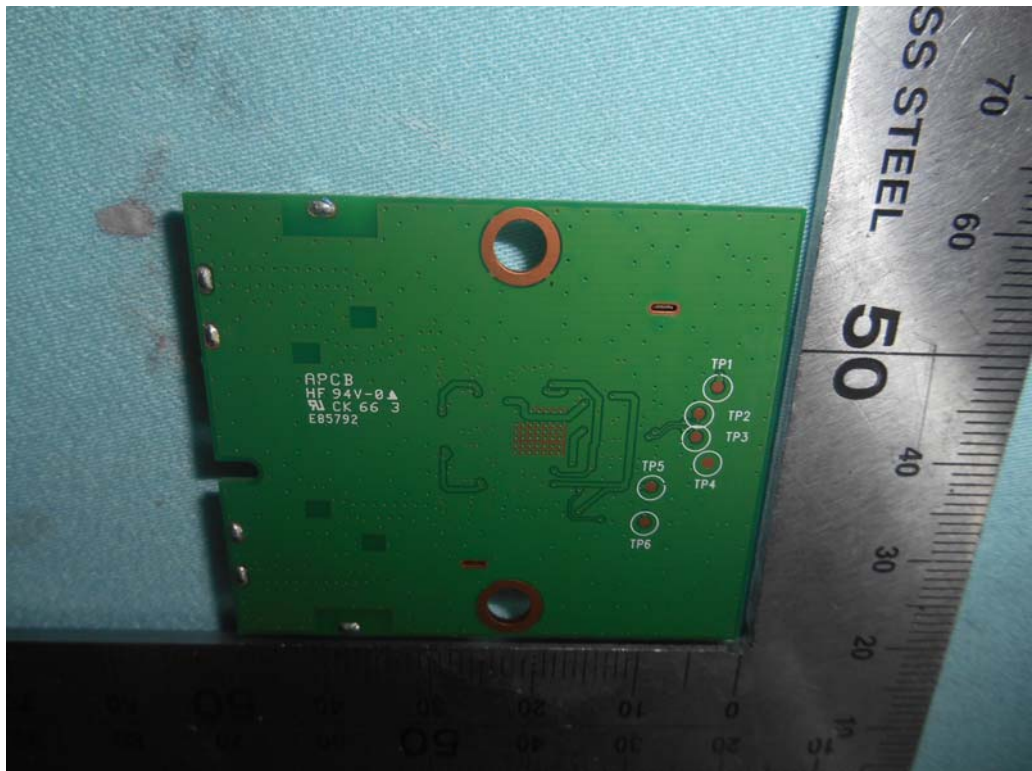


FIGURE 15  
LED LCD TV (M/N: 32H5C)  
RF BOARD LABEL



FIGURE 16  
LED LCD TV (M/N: 32H5C)  
CHIP & CRYSTAL ON RF BOARD

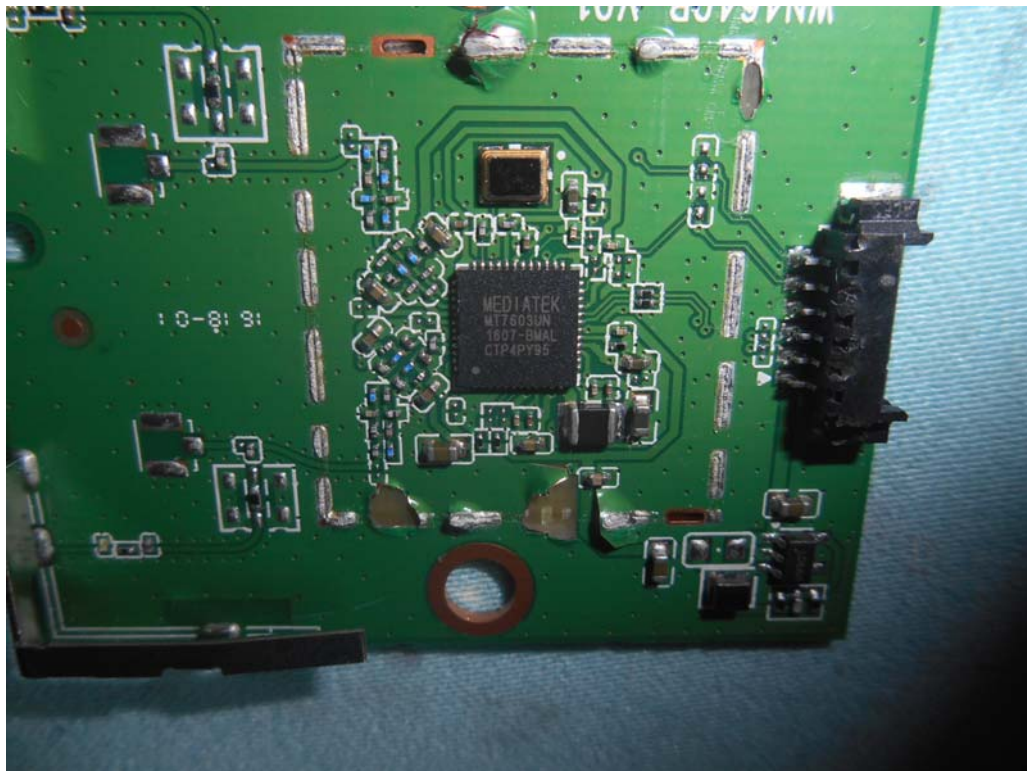




FIGURE 17  
LED LCD TV (M/N: 32H5C)  
KEY BOARD (COMPONENT SIDE)



FIGURE 18  
LED LCD TV (M/N: 32H5C)  
KEY BOARD (SOLDERED SIDE)

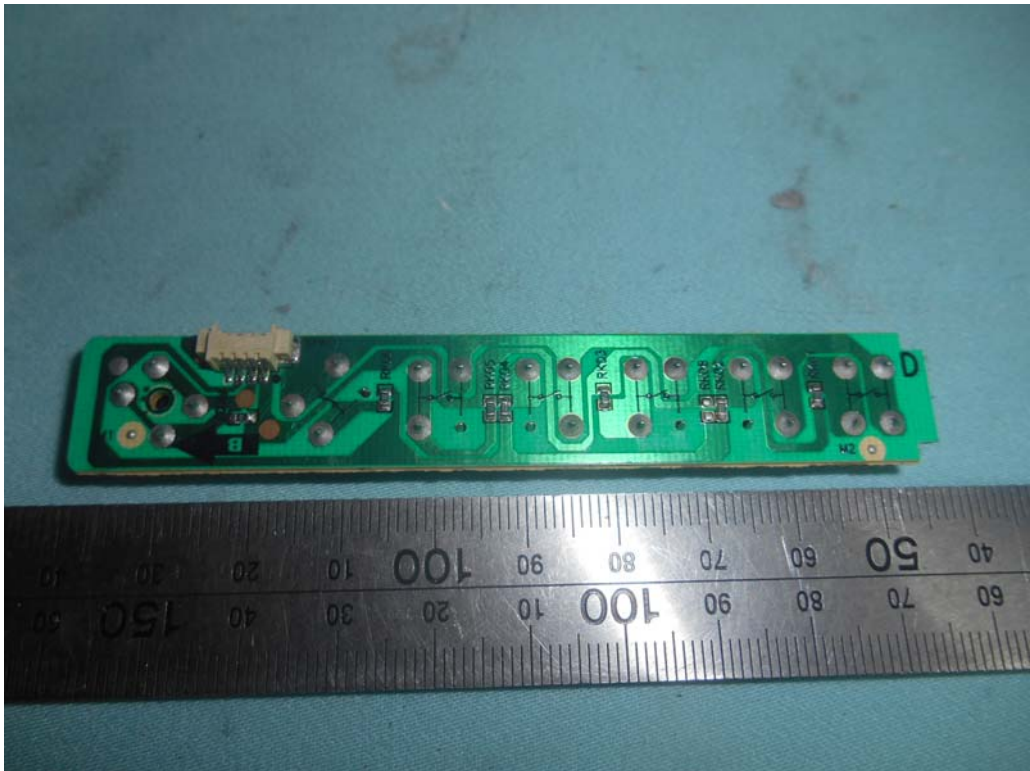


FIGURE 19  
LED LCD TV (M/N: 32H5C)  
IR BOARD (COMPONENT SIDE)



FIGURE 20  
LED LCD TV (M/N: 32H5C)  
IR BOARD (SOLDERED SIDE)

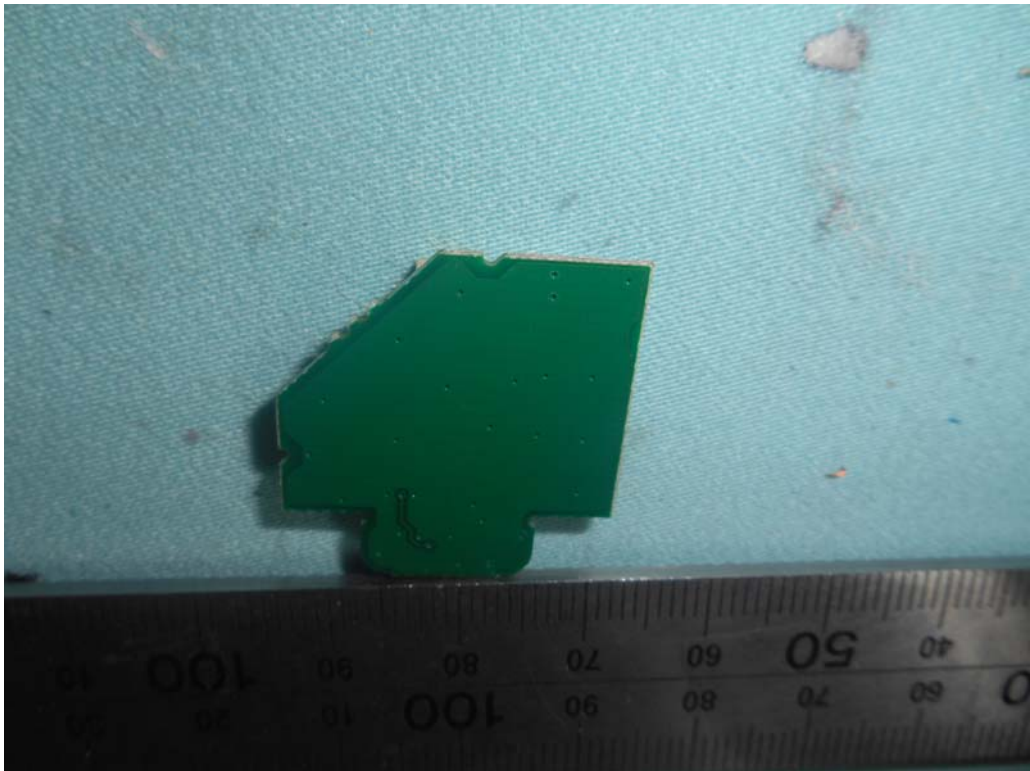


FIGURE 21  
LED LCD TV (M/N: 32H5C)  
DEBUG

