

FIGURE 1
LED LCD TV (M/N: LC-32N4000U)
COVER REMOVED



FIGURE 2
LED LCD TV (M/N: LC-32N4000U)
LCD PANEL LABEL



FIGURE 3
LED LCD TV (M/N: LC-32N4000U)
MAIN BOARD (COMPONENT SIDE)



FIGURE 4
LED LCD TV (M/N: LC-32N4000U)
MAIN BOARD (SOLDERED SIDE)



FIGURE 5
LED LCD TV (M/N: LC-32N4000U)
CHIP & CRYSTAL#1 ON MAIN BOARD



FIGURE 6
LED LCD TV (M/N: LC-32N4000U)
TUNER



FIGURE 7
LED LCD TV (M/N: LC-32N4000U)
TUNER BOARD (COMPONENT SIDE)



FIGURE 8
LED LCD TV (M/N: LC-32N4000U)
TUNER BOARD (SOLDERED SIDE)

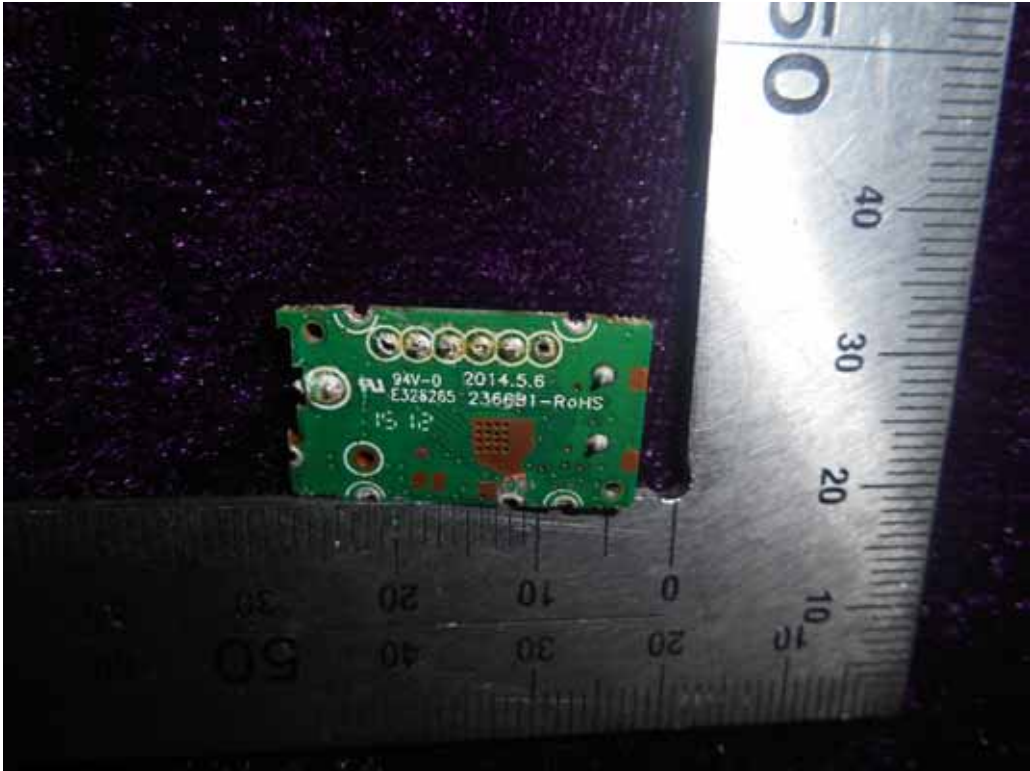


FIGURE 9
LED LCD TV (M/N: LC-32N4000U)
PANEL BOARD (COMPONENT SIDE)



FIGURE 10
LED LCD TV (M/N: LC-32N4000U)
PANEL BOARD (SOLDERED SIDE)



FIGURE 11
LED LCD TV (M/N: LC-32N4000U)
CHIP & CRYSTAL ON PANEL BOARD

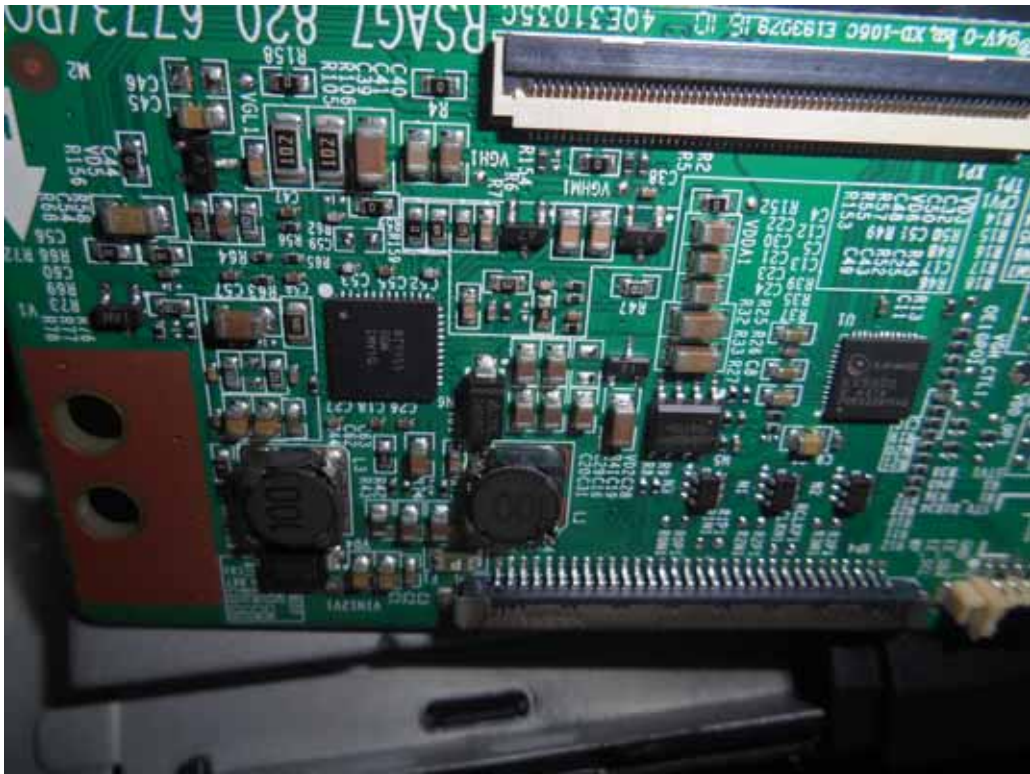


FIGURE 12
LED LCD TV (M/N: LC-32N4000U)
RF BOARD (COMPONENT SIDE)



FIGURE 15
LED LCD TV (M/N: LC-32N4000U)
CHIP & CRYSTAL ON RF BOARD

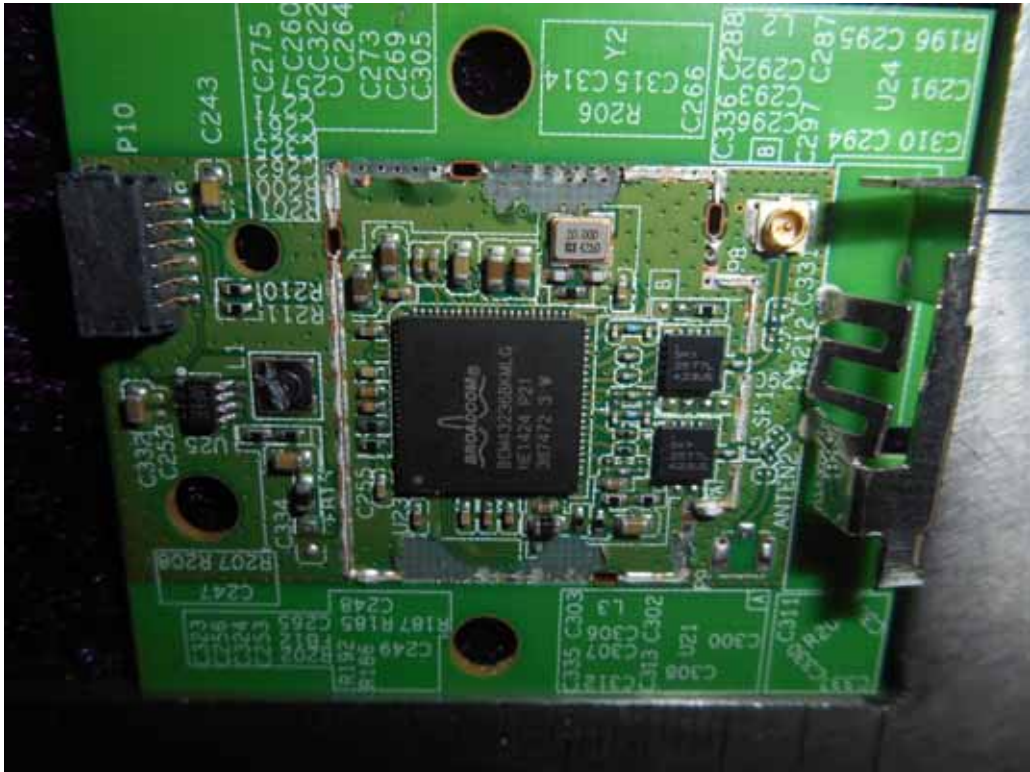


FIGURE 16
LED LCD TV (M/N: LC-32N4000U)
KEY BOARD (COMPONENT SIDE)



FIGURE 17
LED LCD TV (M/N: LC-32N4000U)
KEY BOARD (SOLDERED SIDE)

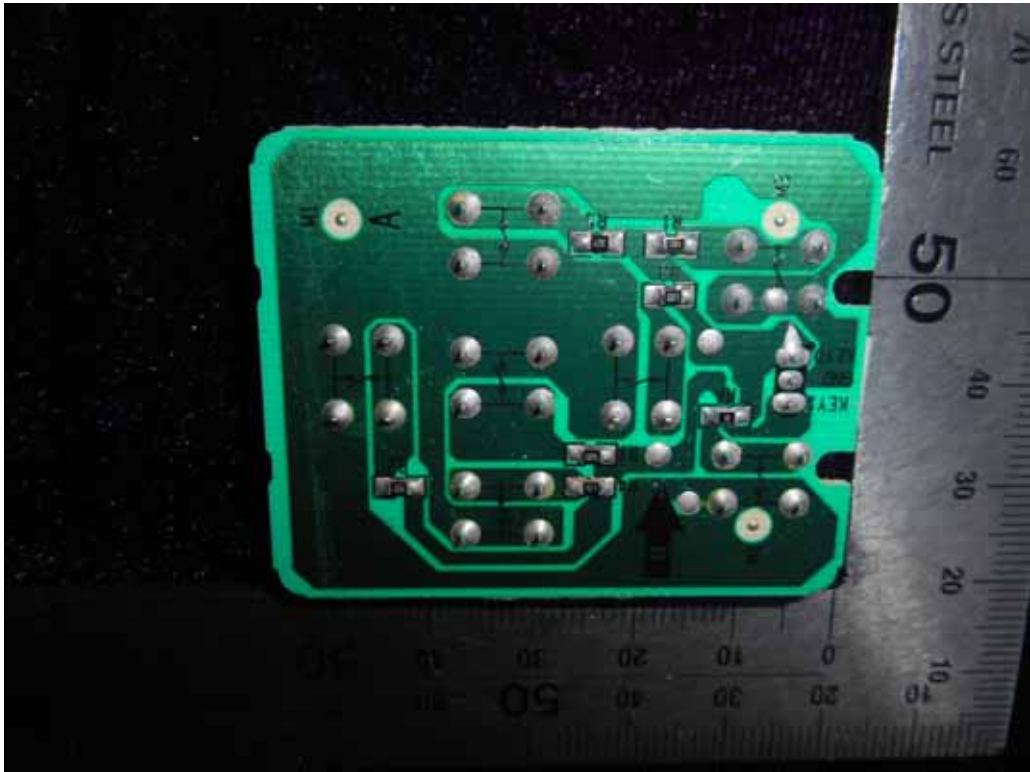


FIGURE 18
LED LCD TV (M/N: LC-32N4000U)
IR Board (COMPONENT SIDE)



FIGURE 19
LED LCD TV (M/N: LC-32N4000U)
IR Board (SOLDERED SIDE)

