

*FIGURE 1*  
*LED LCD TV (M/N: LC-32N4000U)*  
*COVER REMOVED*



*FIGURE 2*  
*LED LCD TV (M/N: LC-32N4000U)*  
*LCD PANEL LABEL*



*FIGURE 3*  
*LED LCD TV (M/N: LC-32N4000U)*  
*MAIN BOARD (COMPONENT SIDE)*



*FIGURE 4*  
*LED LCD TV (M/N: LC-32N4000U)*  
*MAIN BOARD (SOLDERED SIDE)*

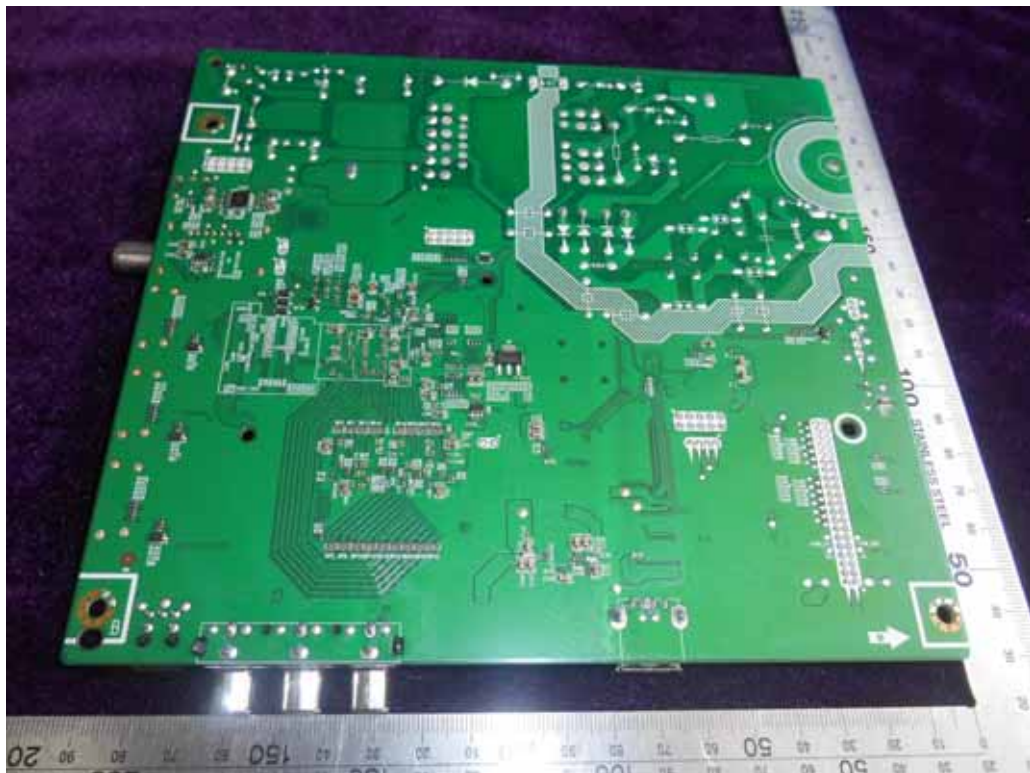


FIGURE 5  
LED LCD TV (M/N: LC-32N4000U)  
CHIP & CRYSTAL#1 ON MAIN BOARD



FIGURE 6  
LED LCD TV (M/N: LC-32N4000U)  
TUNER

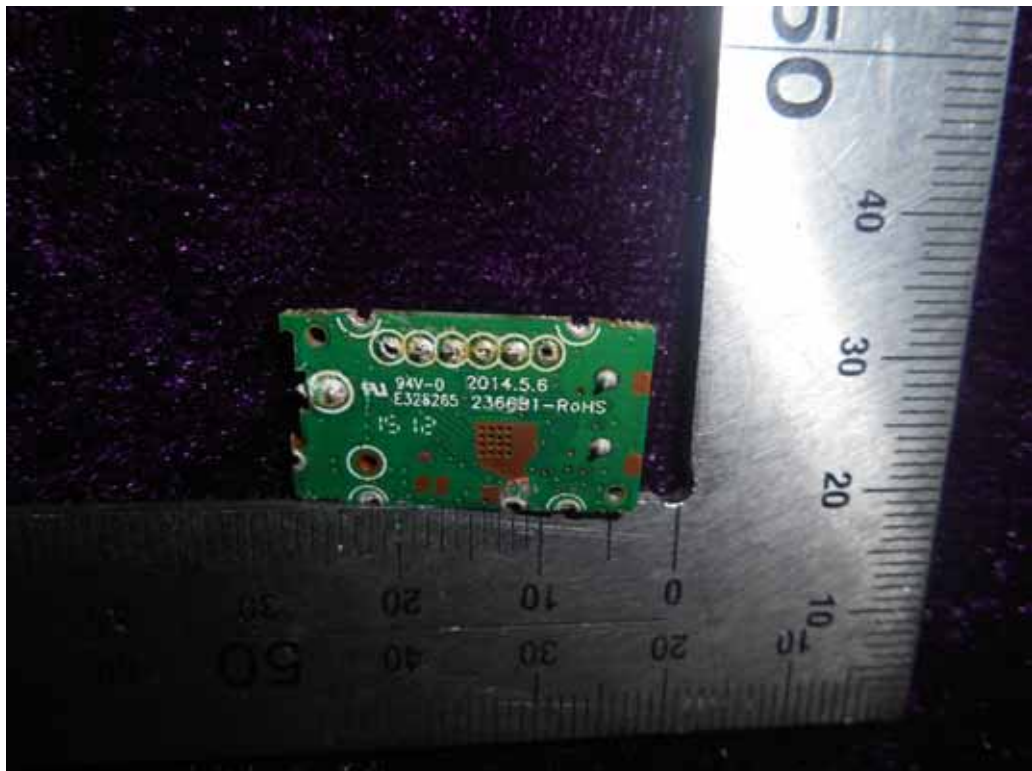




*FIGURE 7*  
*LED LCD TV (M/N: LC-32N4000U)*  
*TUNER BOARD (COMPONENT SIDE)*



*FIGURE 8*  
*LED LCD TV (M/N: LC-32N4000U)*  
*TUNER BOARD (SOLDERED SIDE)*



*FIGURE 9*  
*LED LCD TV (M/N: LC-32N4000U)*  
*PANEL BOARD (COMPONENT SIDE)*



*FIGURE 10*  
*LED LCD TV (M/N: LC-32N4000U)*  
*PANEL BOARD (SOLDERED SIDE)*



FIGURE 11  
LED LCD TV (M/N: LC-32N4000U)  
CHIP & CRYSTAL ON PANEL BOARD



FIGURE 12  
LED LCD TV (M/N: LC-32N4000U)  
RF BOARD (COMPONENT SIDE)





FIGURE 13  
LED LCD TV (M/N: LC-32N4000U)  
RF BOARD (SOLDERED SIDE)

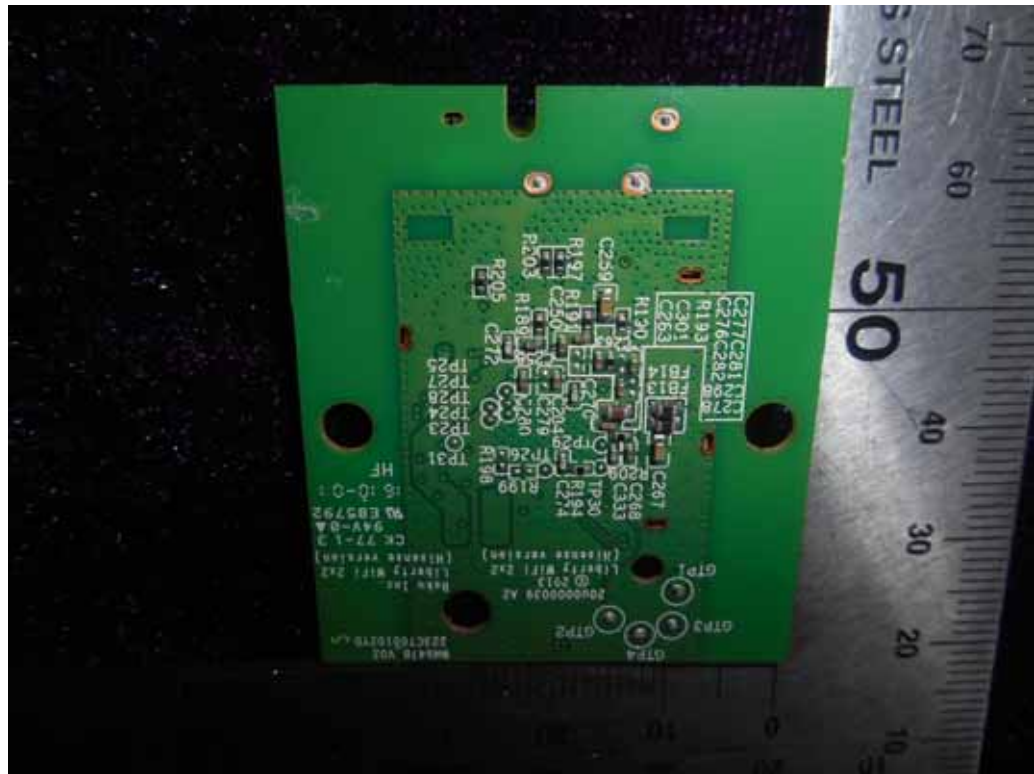


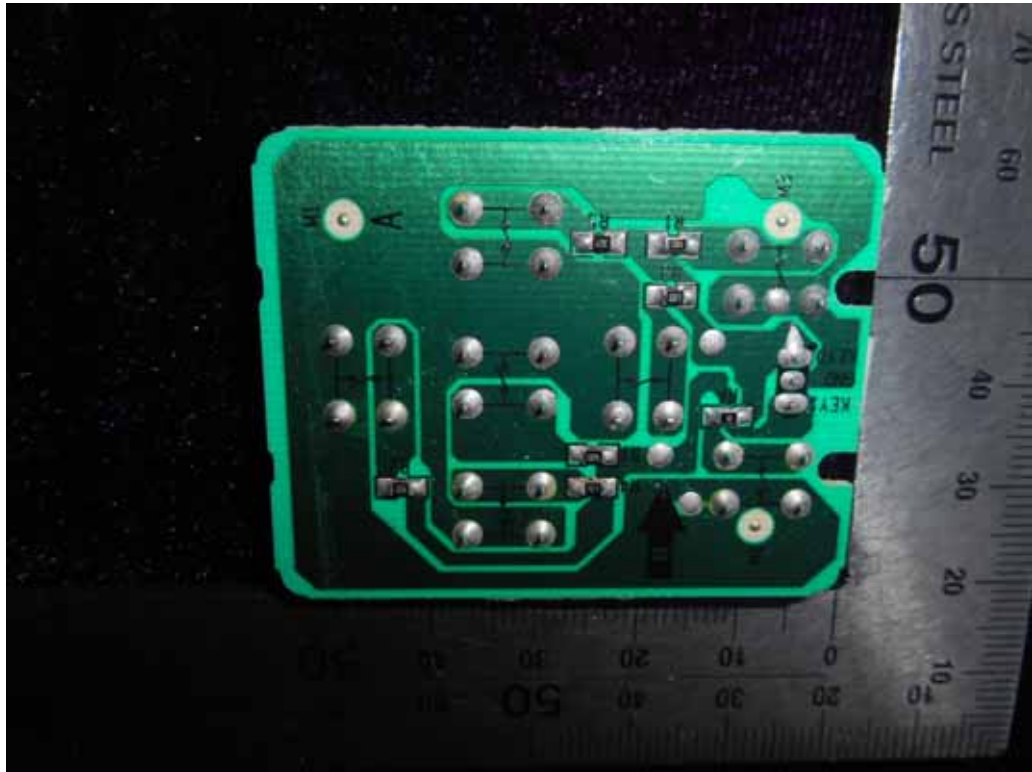
FIGURE 14  
LED LCD TV (M/N: LC-32N4000U)  
RF LABEL







FIGURE 17  
LED LCD TV (M/N: LC-32N4000U)  
KEY BOARD (SOLDERED SIDE)



*FIGURE 18*  
*LED LCD TV (M/N: LC-32N4000U)*  
*IR Board (COMPONENT SIDE)*



*FIGURE 19*  
*LED LCD TV (M/N: LC-32N4000U)*  
*IR Board (SOLDERED SIDE)*

