

FIGURE 1  
LED LCD TV (M/N: LTDN32K220WUS)  
COVER REMOVED



FIGURE 2  
LED LCD TV (M/N: LTDN32K220WUS)  
LABEL



FIGURE 3  
LED LCD TV (M/N: LTDN32K220WUS)  
LCD PANEL LABEL



FIGURE 4  
LED LCD TV (M/N: LTDN32K220WUS)  
MAIN BOARD (COMPONENT SIDE)



FIGURE 5  
LED LCD TV (M/N: LTDN32K220WUS)  
MAIN BOARD (SOLDERED SIDE)



FIGURE 6  
LED LCD TV (M/N: LTDN32K220WUS)  
CHIP & CRYSTAL ON MAIN BOARD



FIGURE 7  
LED LCD TV (M/N: LTDN32K220WUS)  
TUNER COVER REMOVED

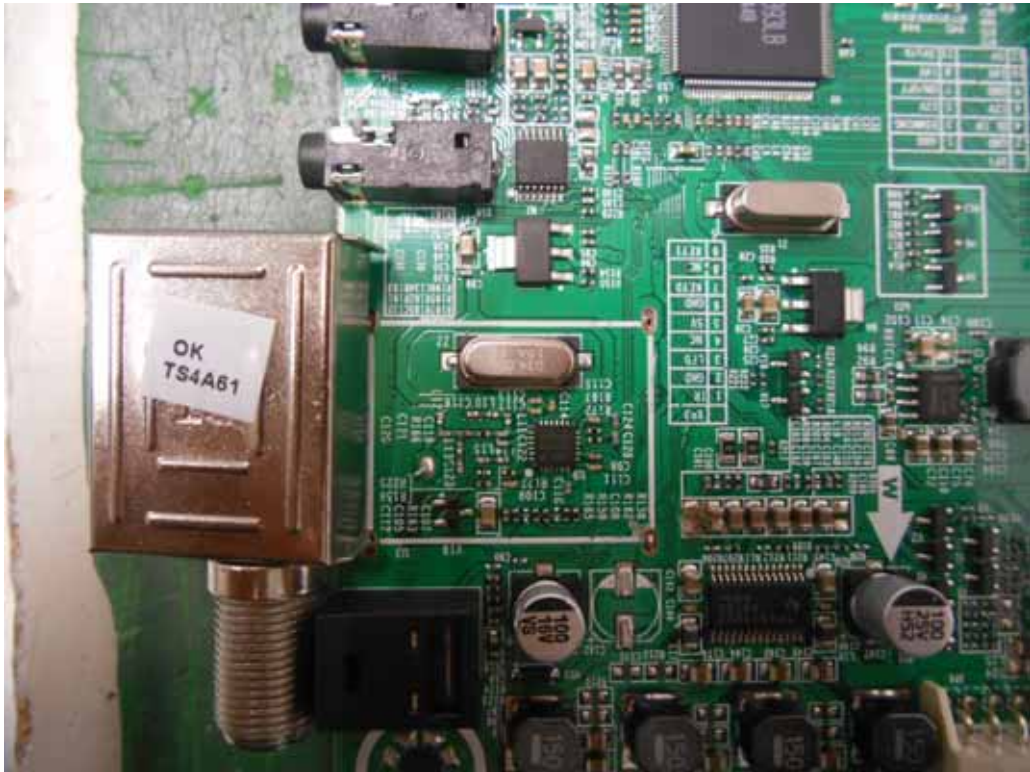


FIGURE 8  
LED LCD TV (M/N: LTDN32K220WUS)  
RF BOARD (COMPONENT SIDE)



FIGURE 9  
LED LCD TV (M/N: LTDN32K220WUS)  
RF BOARD (SOLDERED SIDE)

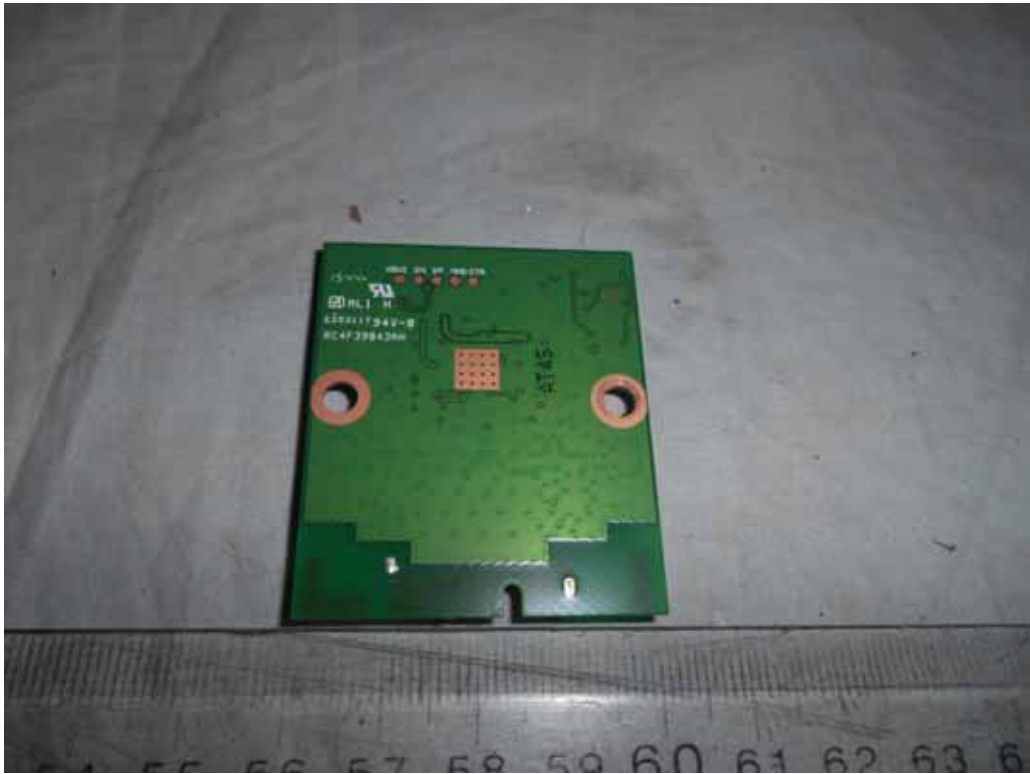


FIGURE 10  
LED LCD TV (M/N: LTDN32K220WUS)  
RF BOARD LABEL



FIGURE 11  
LED LCD TV (M/N: LTDN32K220WUS)  
CHIP & CRYSTAL ON RF BOARD



FIGURE 12  
LED LCD TV (M/N: LTDN32K220WUS)  
KEY BOARD (COMPONENT SIDE)



FIGURE 13  
LED LCD TV (M/N: LTDN32K220WUS)  
KEY BOARD (COMPONENT SIDE)

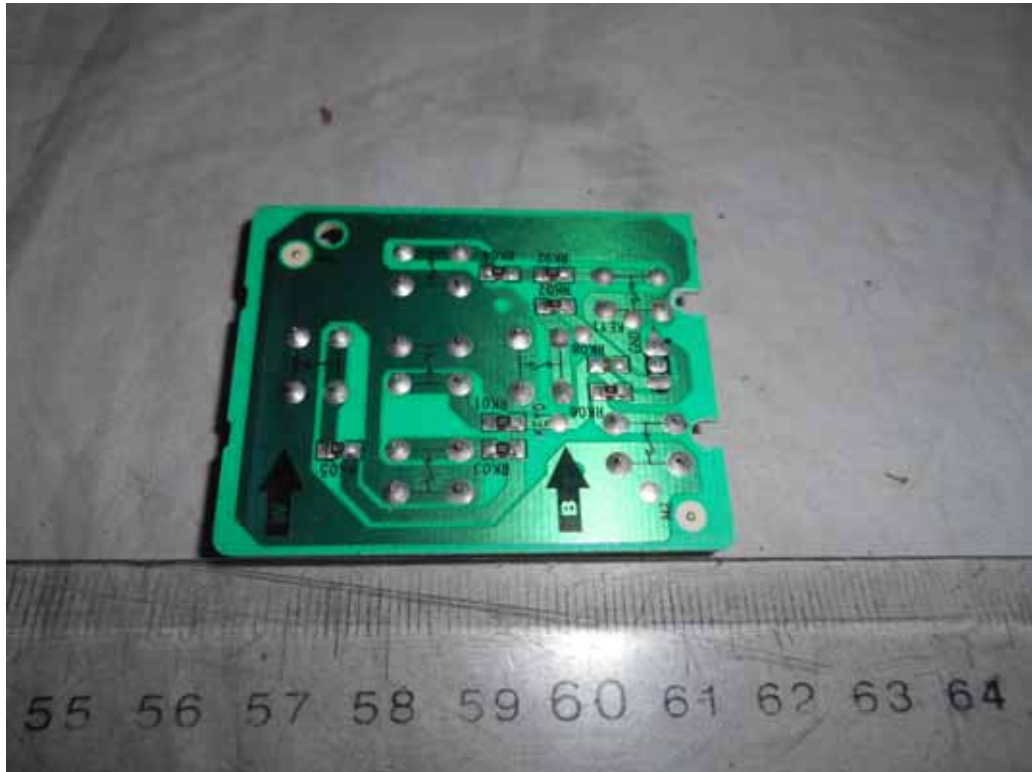


FIGURE 14  
LED LCD TV (M/N: LTDN32K220WUS)  
IR BOARD (COMPONENT SIDE)



*FIGURE 15*  
*LED LCD TV (M/N: LTDN32K220WUS)*  
*IR BOARD (COMPONENT SIDE)*

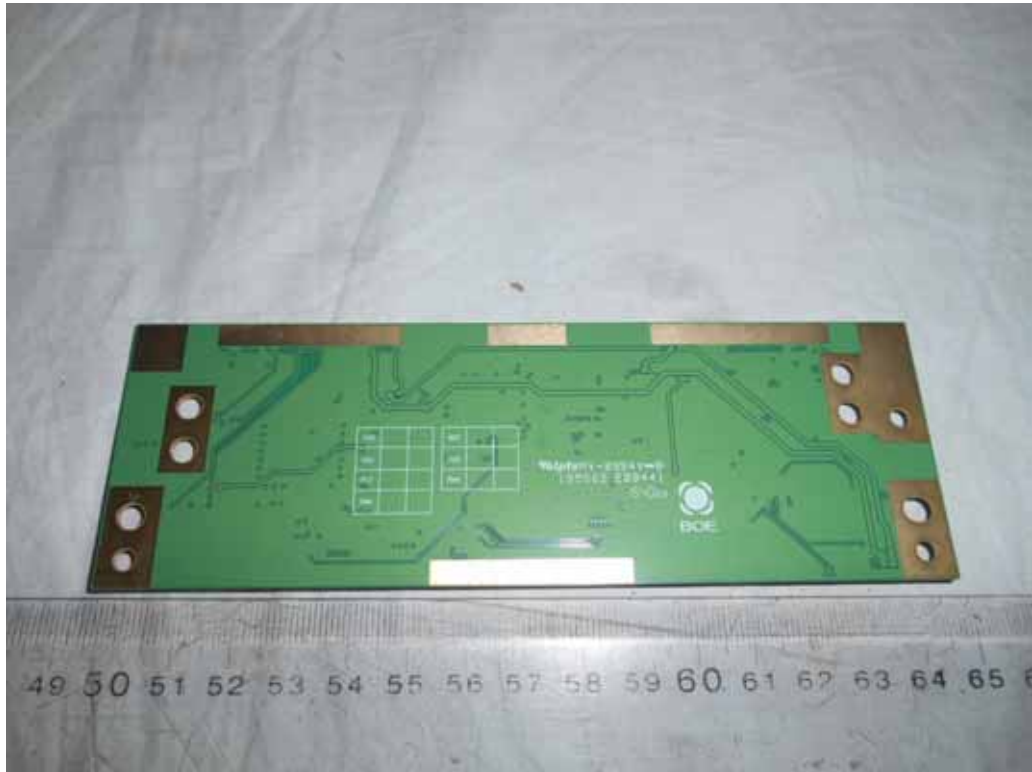


*FIGURE 16*  
*LED LCD TV (M/N: LTDN32K220WUS)*  
*SIGNAL BOARD (COMPONENT SIDE)*





*FIGURE 17*  
*LED LCD TV (M/N: LTDN32K220WUS)*  
*SIGNAL BOARD (SOLDERED SIDE)*



*FIGURE 18*  
*LED LCD TV (M/N: LTDN32K220WUS)*  
*CHIP ON SIGNAL BOARD*



FIGURE 19  
LED LCD TV (M/N: LTDN32K220WUS)  
DEBUG

