

FIGURE 1
LED LCD TV (M/N: 32K20DW)
COVER REMOVED



FIGURE 2
LED LCD TV (M/N: 32K20DW)
LCD PANEL LABEL



FIGURE 3
LED LCD TV (M/N: 32K20DW)
POWER BOARD (COMPONENT SIDE)

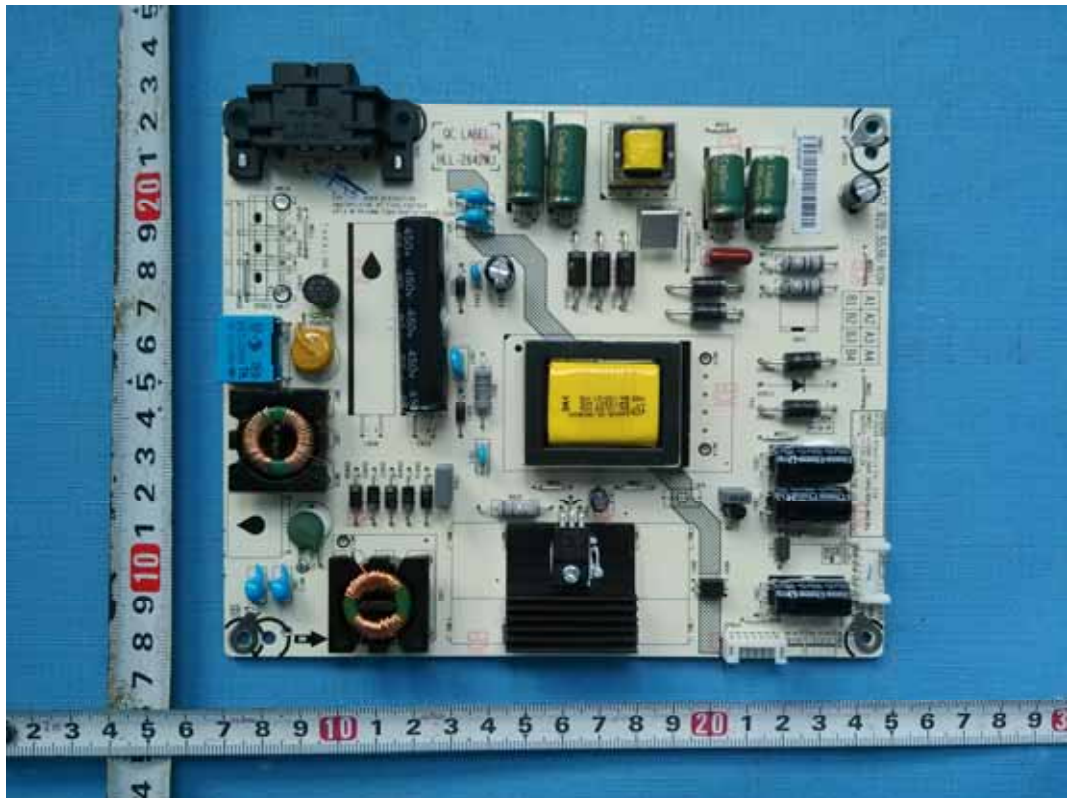


FIGURE 4
LED LCD TV (M/N: 32K20DW)
POWER BOARD (SOLDERED SIDE)

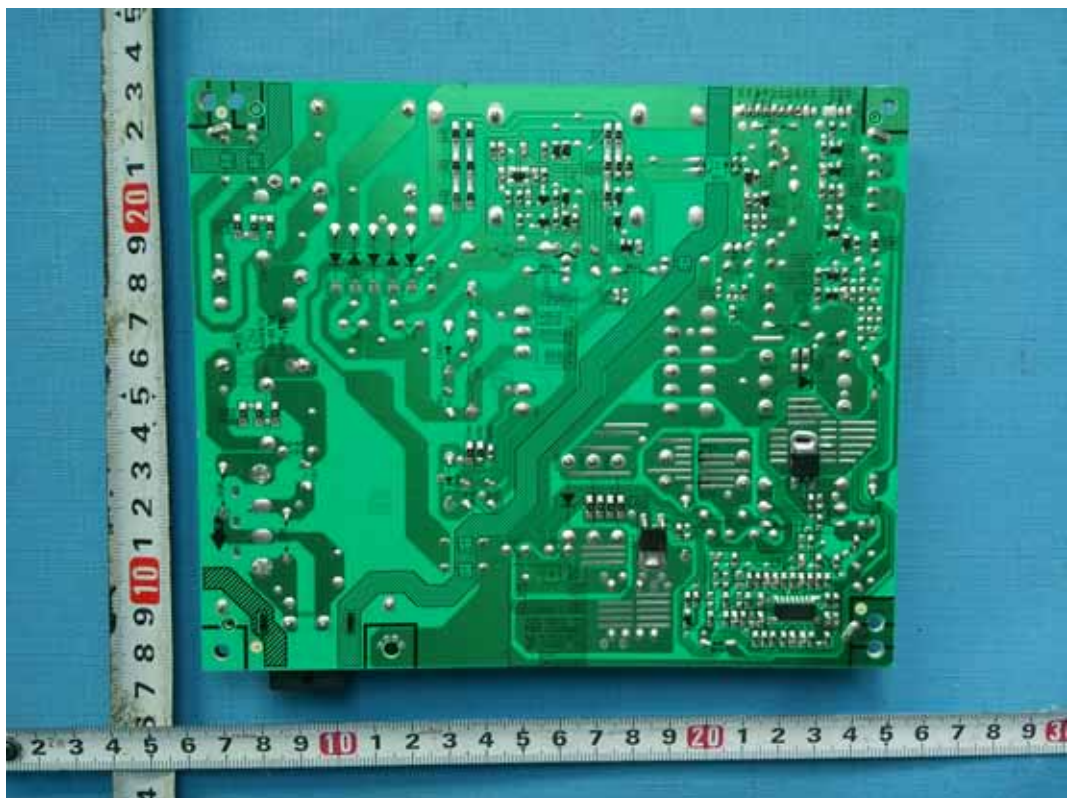


FIGURE 5
LED LCD TV (M/N: 32K20DW)
MAIN BOARD (COMPONENT SIDE)



FIGURE 6
LED LCD TV (M/N: 32K20DW)
MAIN BOARD (SOLDERED SIDE)



FIGURE 7
LED LCD TV (M/N: 32K20DW)
CRYSTAL & CHIP #1 ON MAIN BOARD



FIGURE 8
LED LCD TV (M/N: 32K20DW)
CHIP #2 ON MAIN BOARD



FIGURE 9
LED LCD TV (M/N: 32K20DW)
TUNER ON MAIN BOARD



FIGURE 10
LED LCD TV (M/N: 32K20DW)
TUNER COVER REMOVED

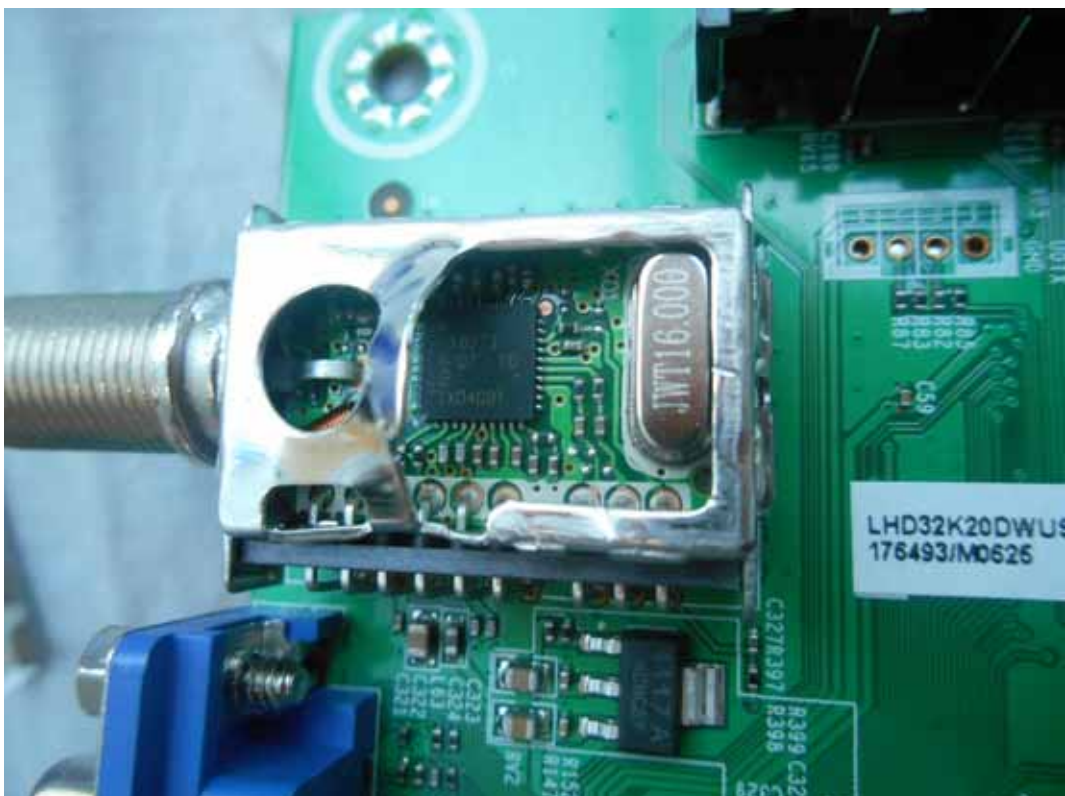


FIGURE 12
LED LCD TV (M/N: 32K20DW)
KEY BOARD (COMPONENT SIDE)

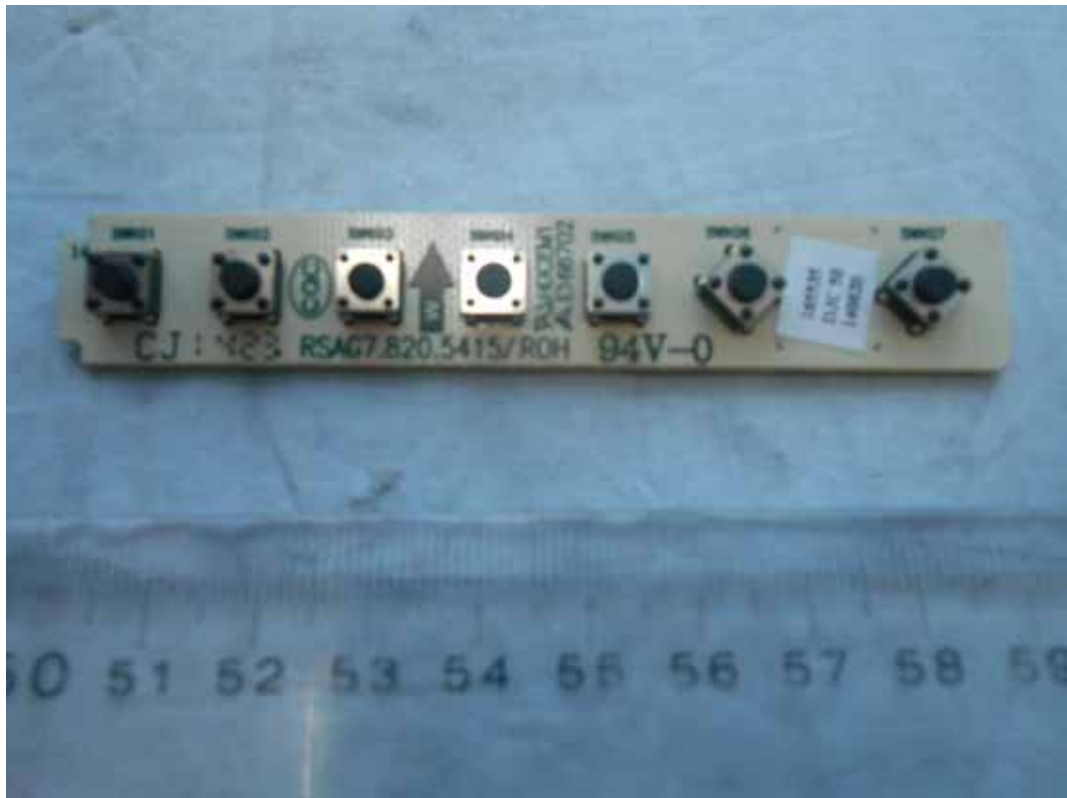


FIGURE 13
LED LCD TV (M/N: 32K20DW)
KEY BOARD (SOLDERED SIDE)

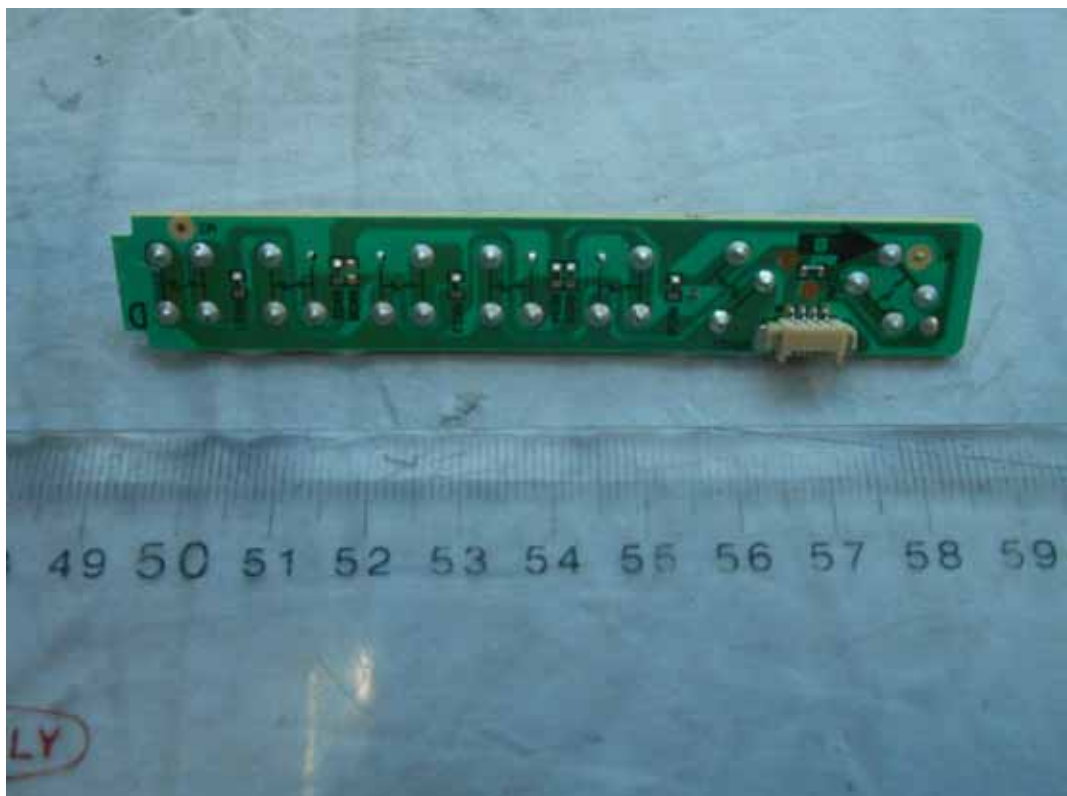


FIGURE 14
LED LCD TV (M/N: 32K20DW)
LCD PANEL CONTROL BOARD (COMPONENT SIDE)



FIGURE 15
LED LCD TV (M/N: 32K20DW)
LCD PANEL CONTROL BOARD (SOLDERED SIDE)



FIGURE 16
LED LCD TV (M/N: 32K20DW)
CRYSTAL & CHIP ON LCD PANEL CONTROL BOARD

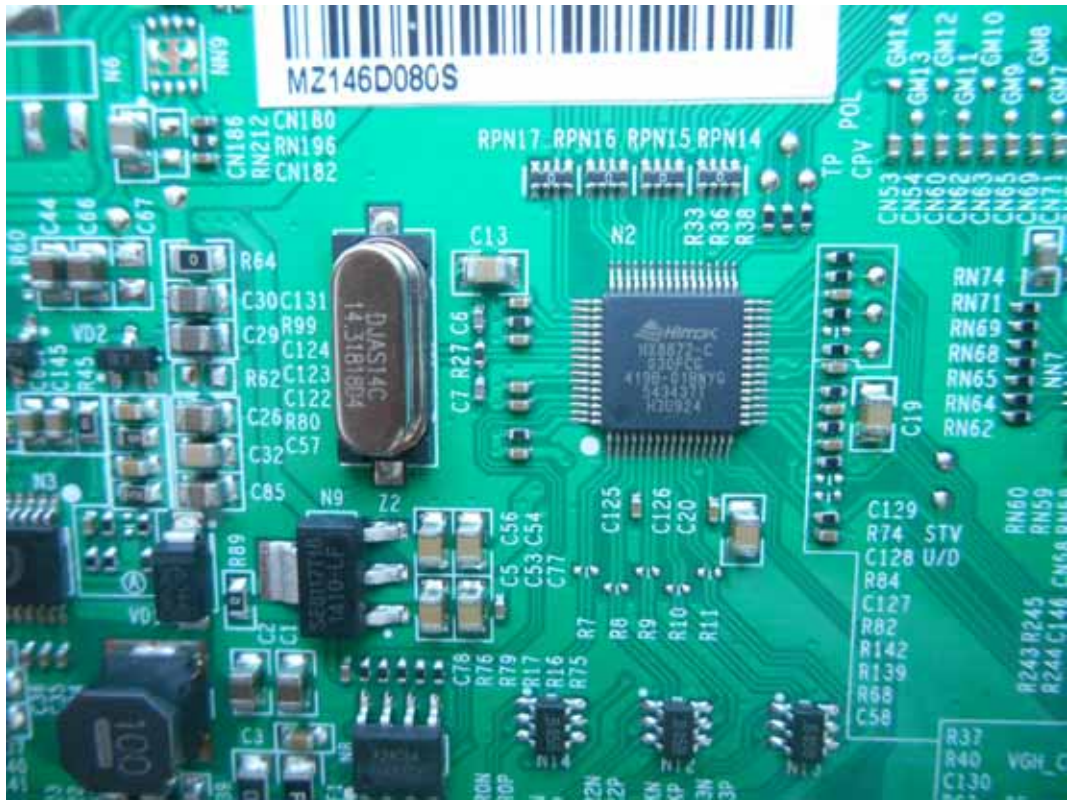


FIGURE 17
LED LCD TV (M/N: 32K20DW)
LCD PANEL CONTROL BOARD (COMPONENT SIDE #1)

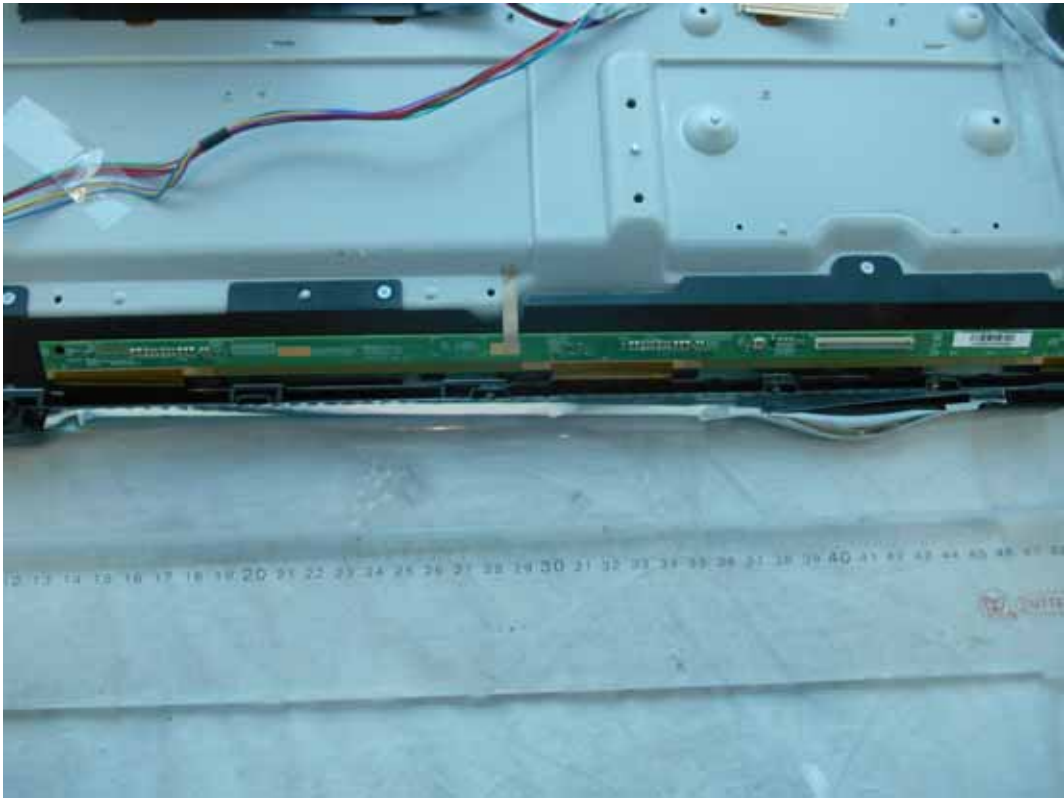


FIGURE 18
LED LCD TV (M/N: 32K20DW)
LCD PANEL CONTROL BOARD (COMPONENT SIDE #2)



FIGURE 19
LED LCD TV (M/N: 32K20DW)
LCD PANEL CONTROL BOARD (SOLDERED SIDE #1)

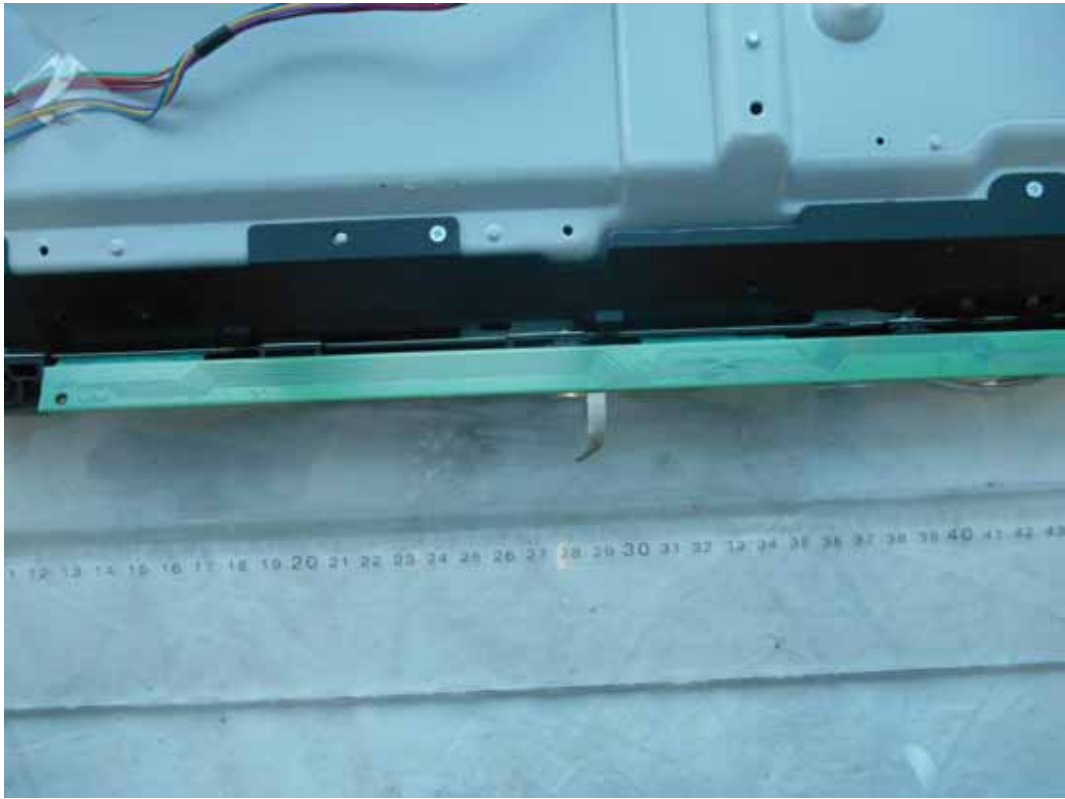


FIGURE 20
LED LCD TV (M/N: 32K20DW)
LCD PANEL CONTROL BOARD (SOLDERED SIDE #2)

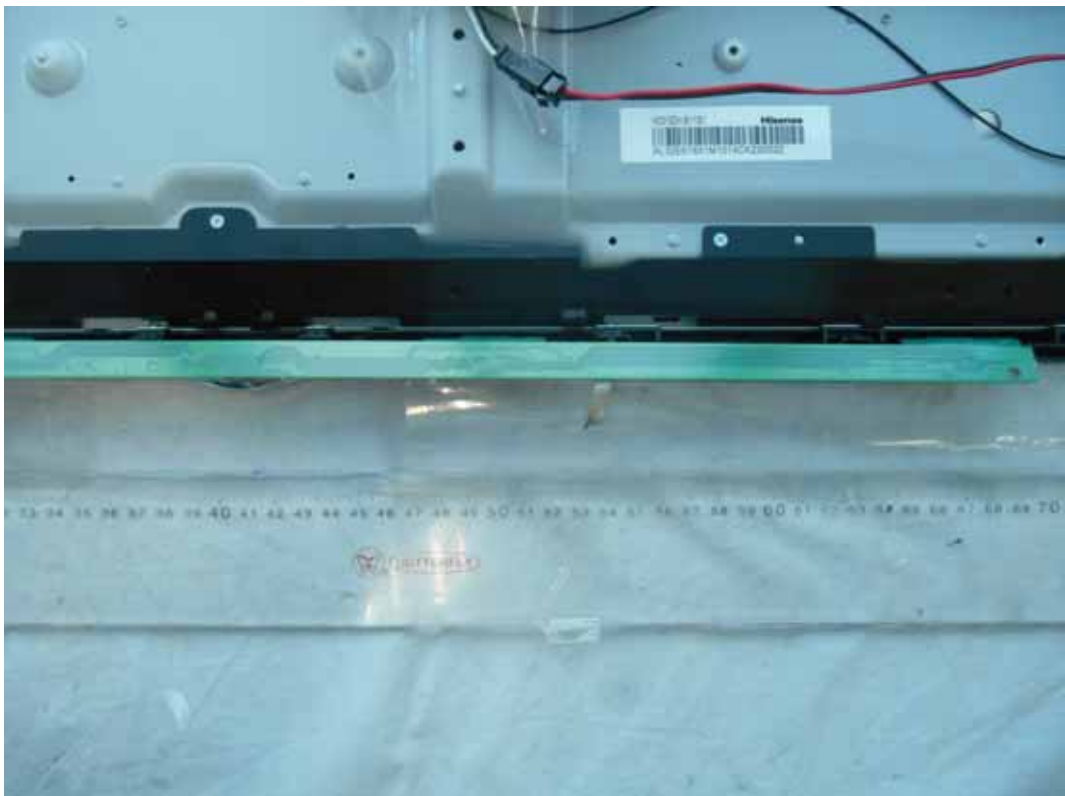


FIGURE 21
LED LCD TV (M/N: 32K20DW)
DEBUG #1

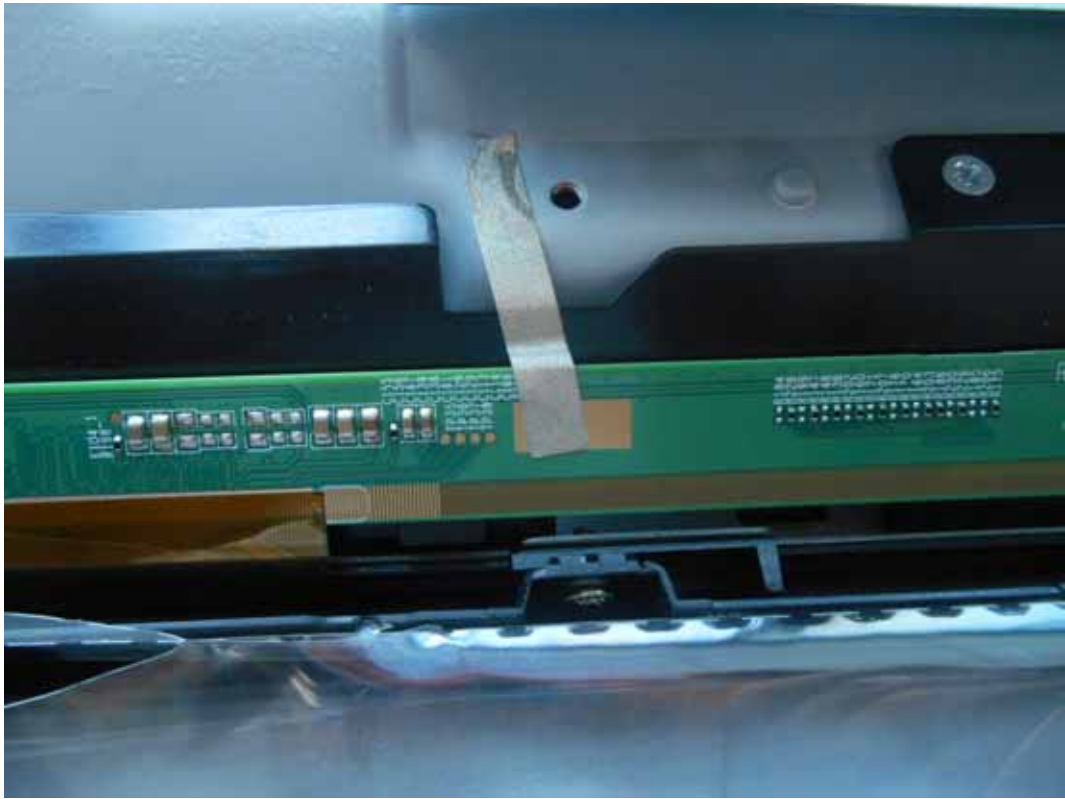


FIGURE 22
LED LCD TV (M/N: 32K20DW)
DEBUG #2

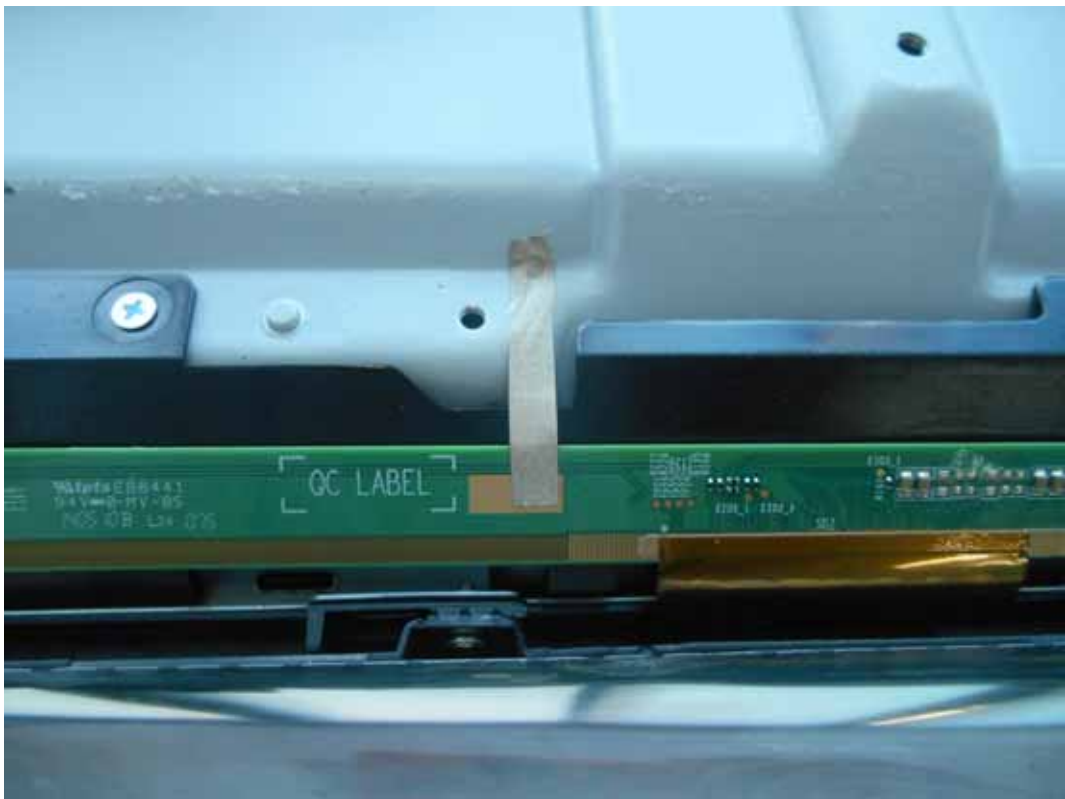


FIGURE 23
LED LCD TV (M/N: 32K20DW)
DEBUG #3

