

FIGURE 1
LED LCD TV (M/N: 32K20D)
COVER REMOVED

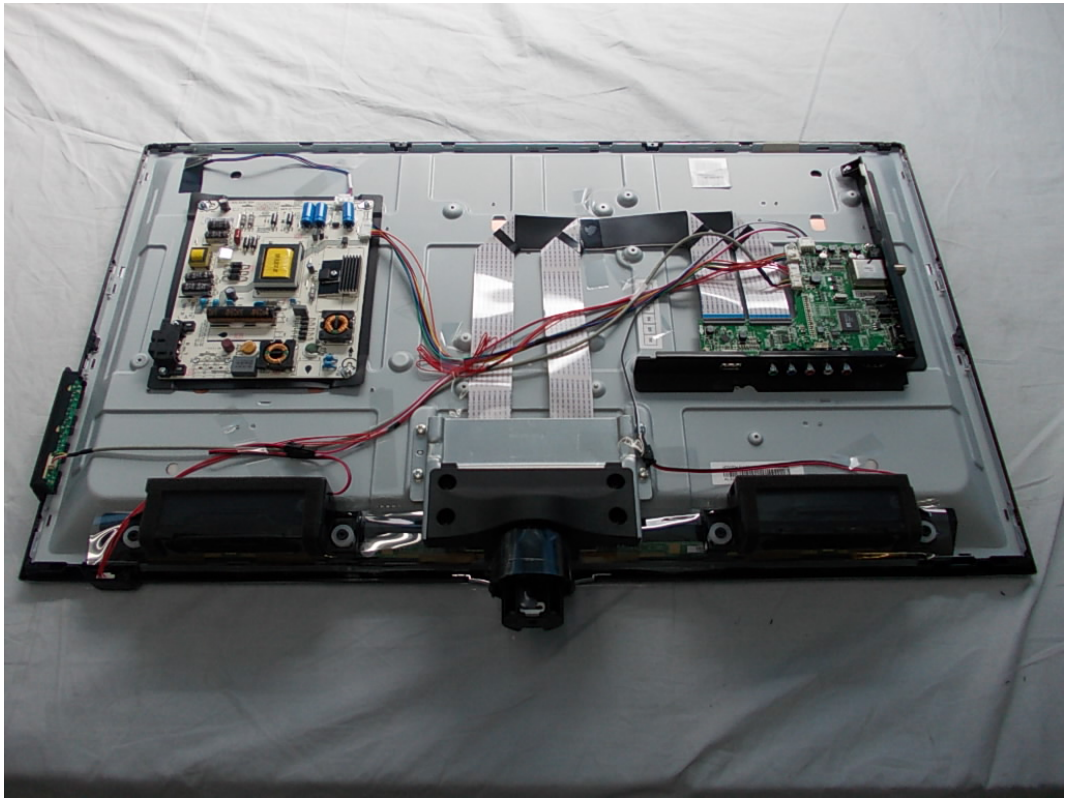


FIGURE 2
LED LCD TV (M/N: 32K20D)
LCD PANEL LABEL



FIGURE 3
LED LCD TV (M/N: 32K20D)
POWER BOARD (COMPONENT SIDE)

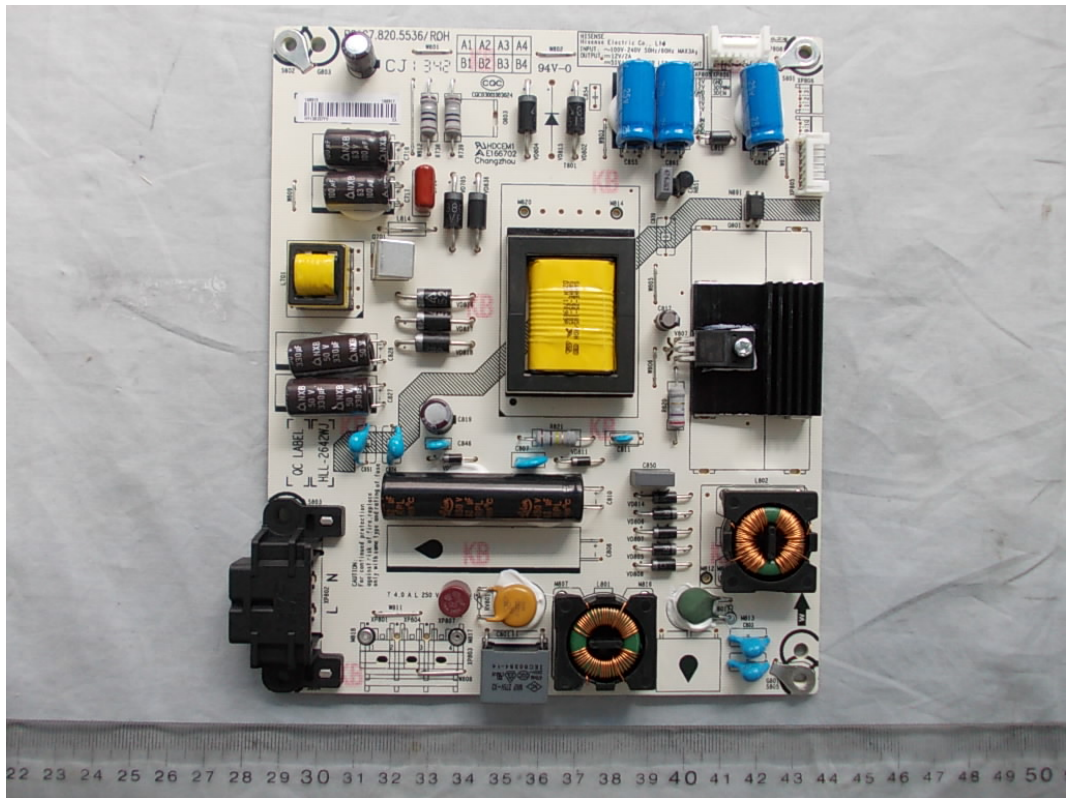


FIGURE 4
LED LCD TV (M/N: 32K20D)
POWER BOARD (SOLDERED SIDE)

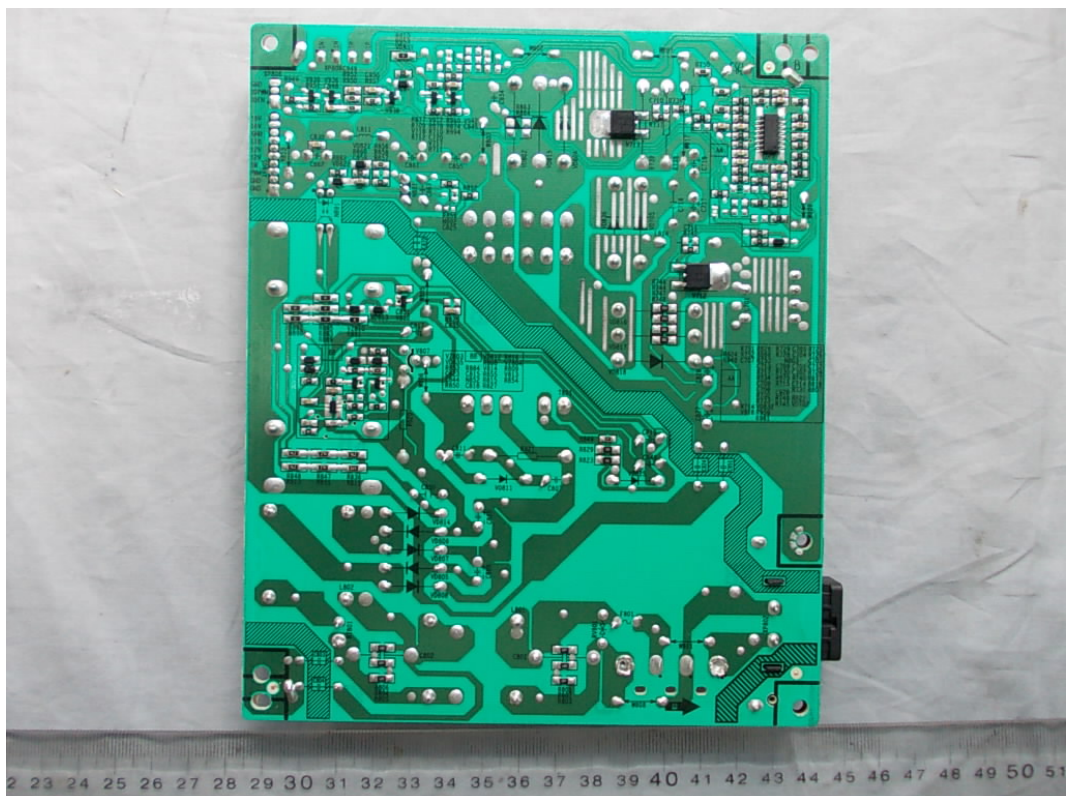


FIGURE 5
LED LCD TV (M/N: 32K20D)
MAIN BOARD (COMPONENT SIDE)

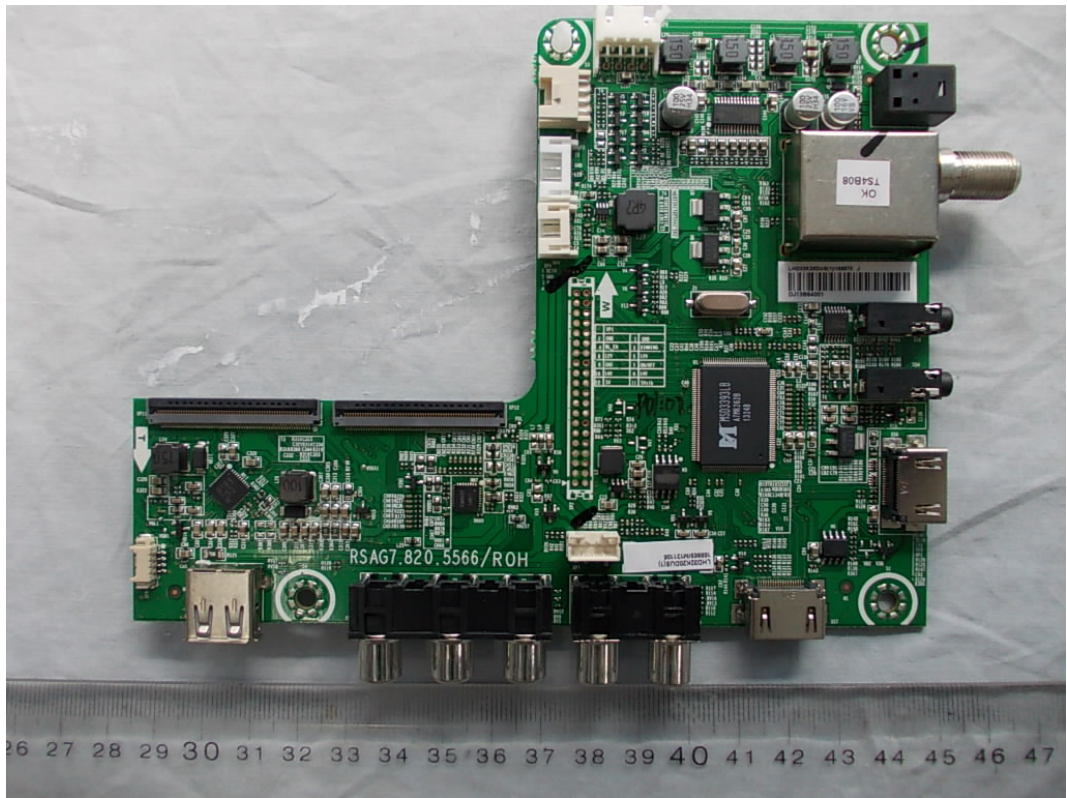


FIGURE 6
LED LCD TV (M/N: 32K20D)
MAIN BOARD (SOLDERED SIDE)

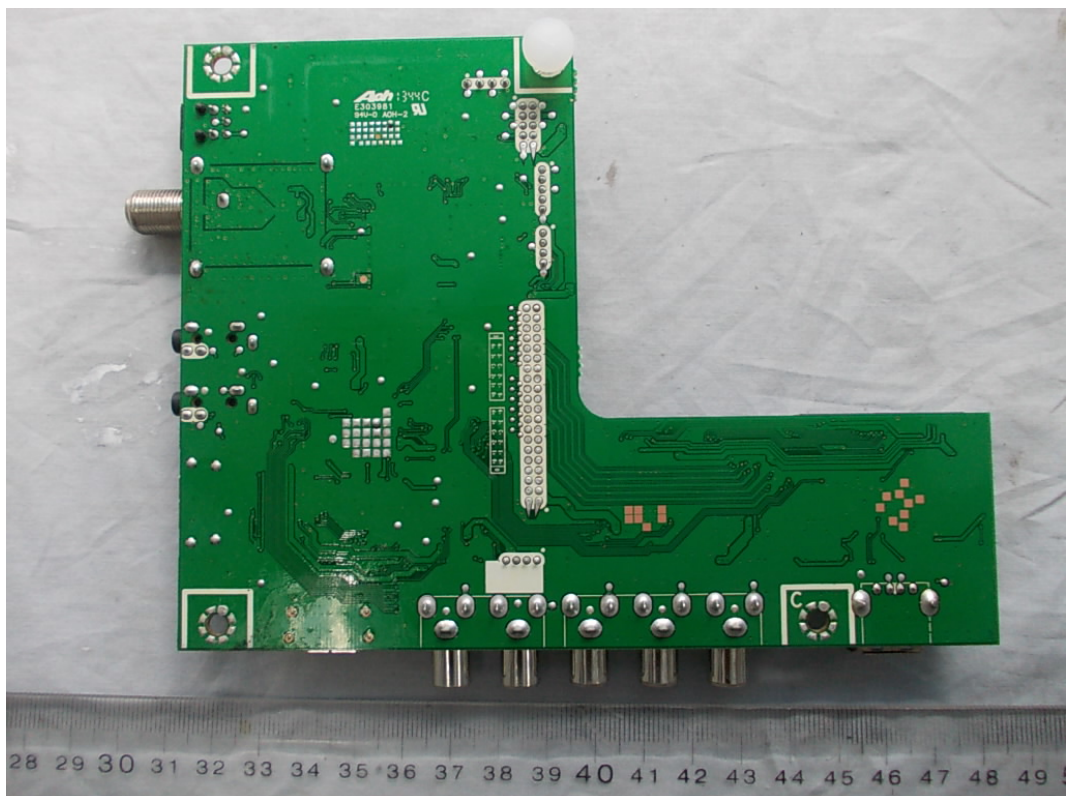


FIGURE 7
LED LCD TV (M/N: 32K20D)
CHIP & CRYSTAL ON MAIN BOARD

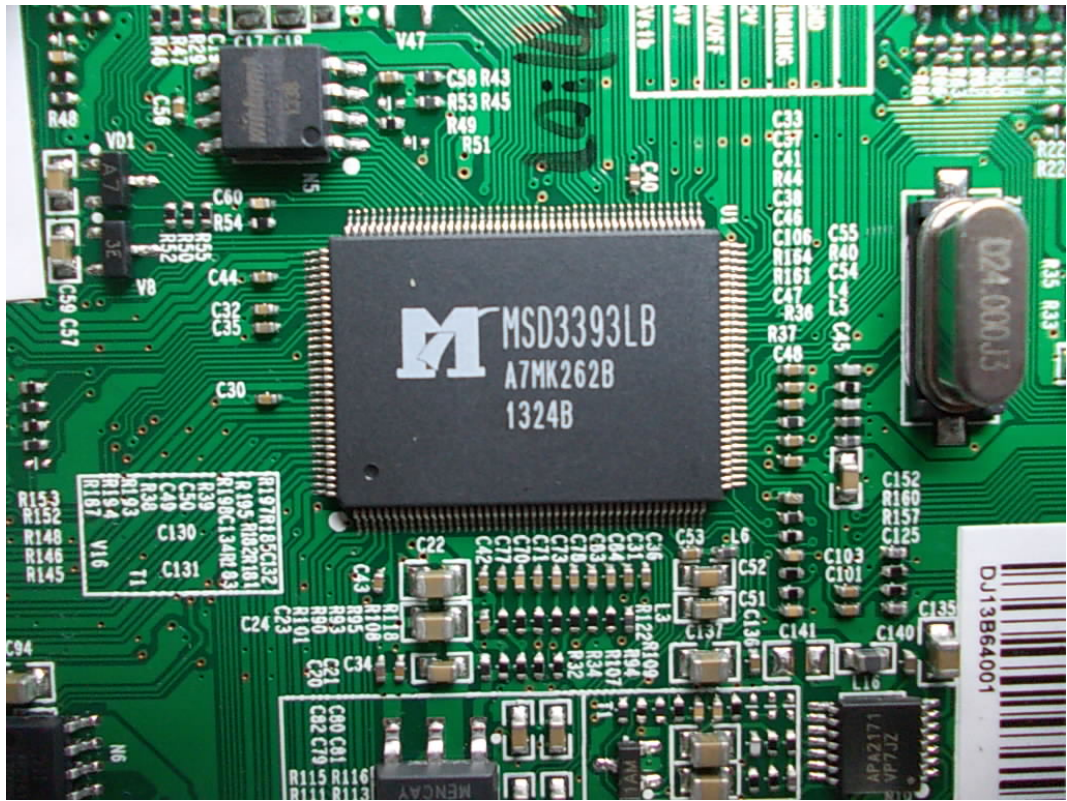


FIGURE 8
LED LCD TV (M/N: 32K20D)
KEY BOARD (COMPONENT SIDE)

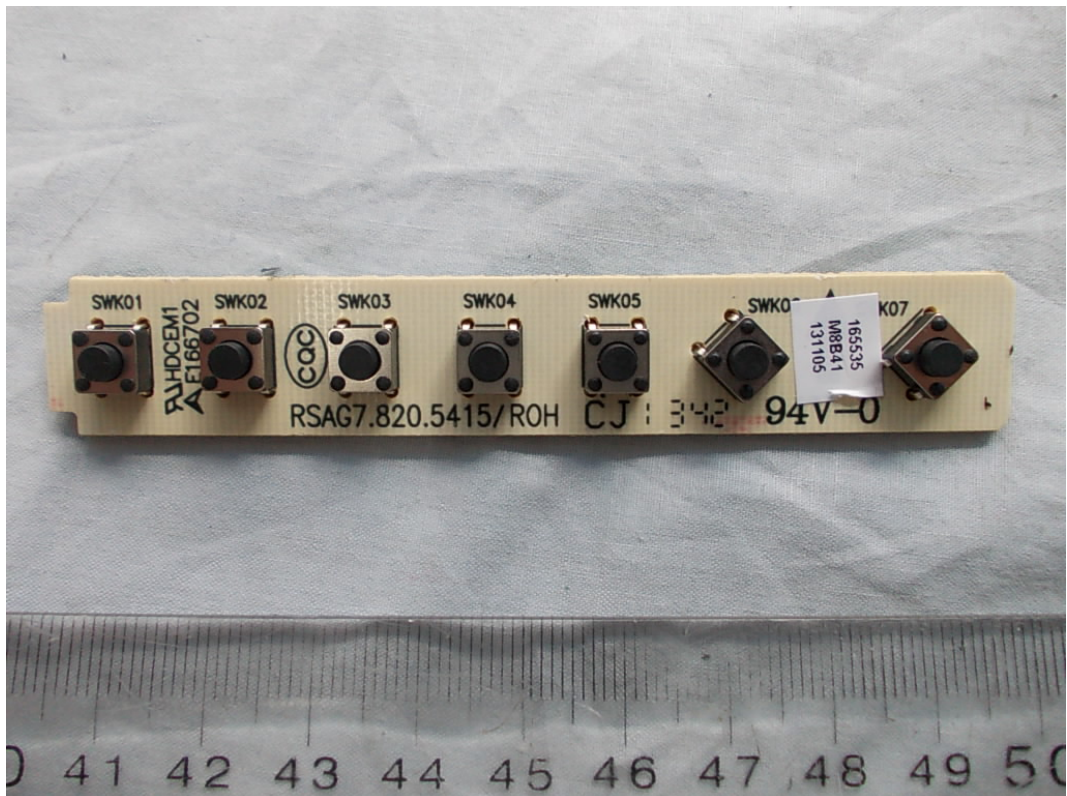


FIGURE 9
LED LCD TV (M/N: 32K20D)
KEY BOARD (SOLDERED SIDE)

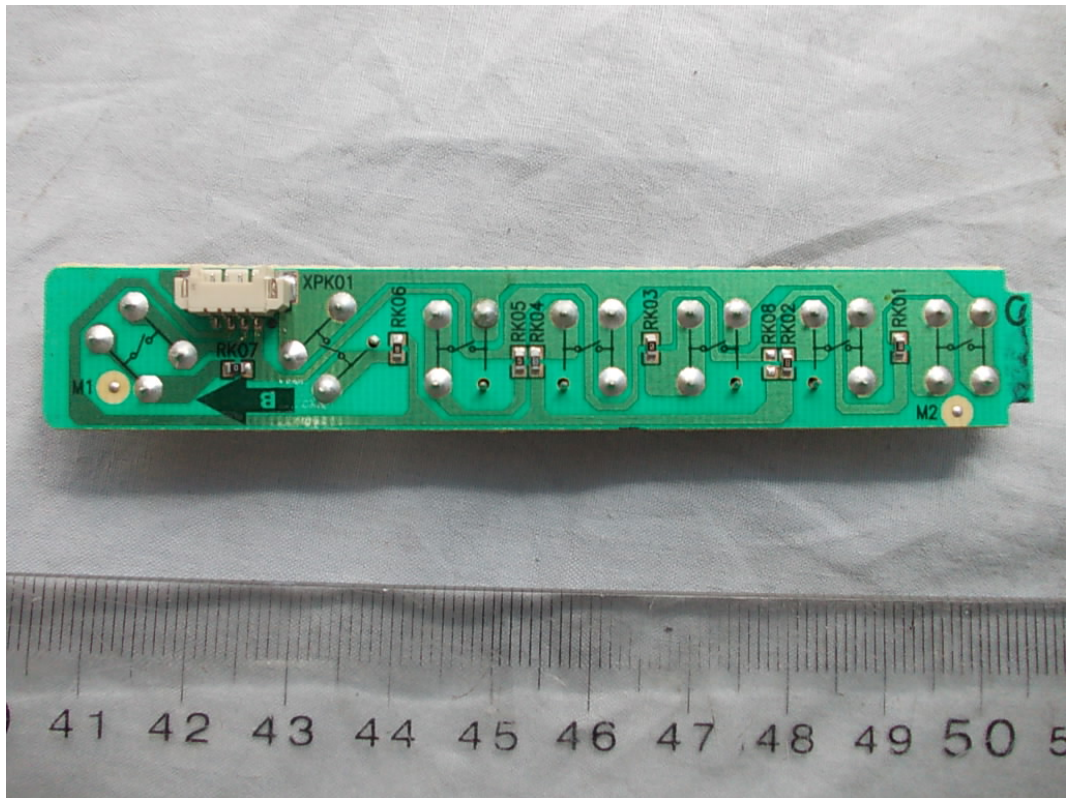


FIGURE 10
LED LCD TV (M/N: 32K20D)
IR BOARD



FIGURE 11
LED LCD TV (M/N: 32K20D)
LCD PANEL CONTROL BOARD (COMPONENT SIDE #1)

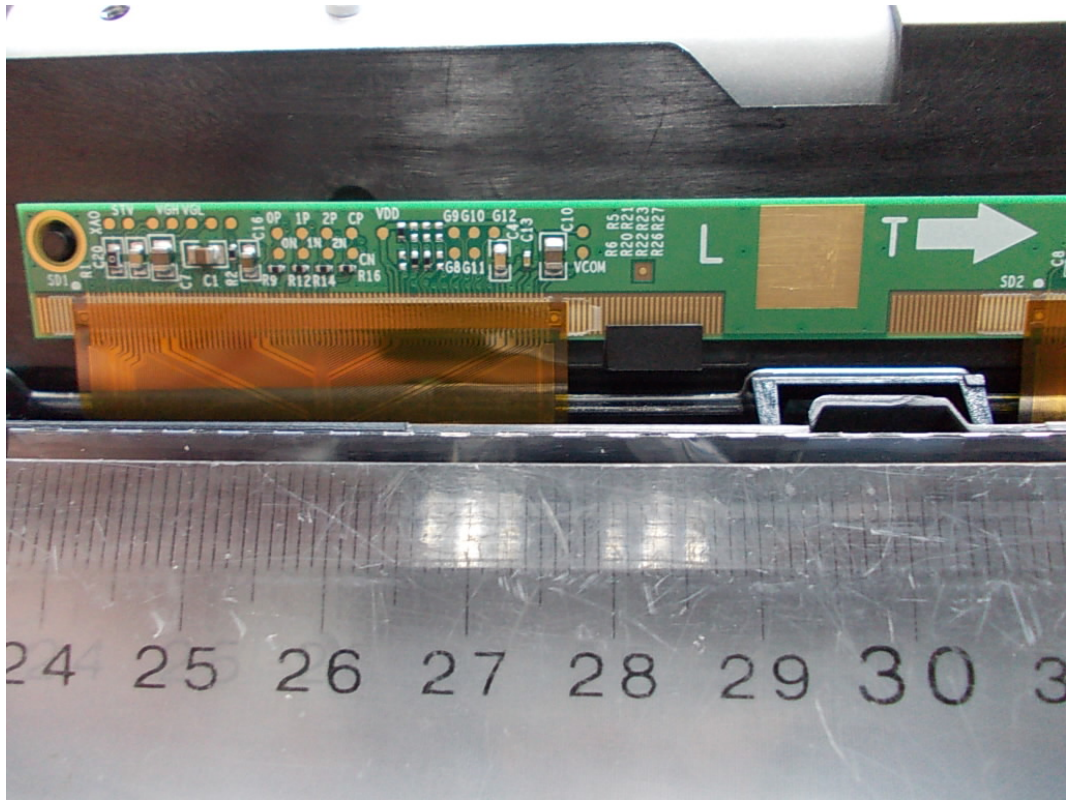


FIGURE 12
LED LCD TV (M/N: 32K20D)
LCD PANEL CONTROL BOARD (COMPONENT SIDE #2)

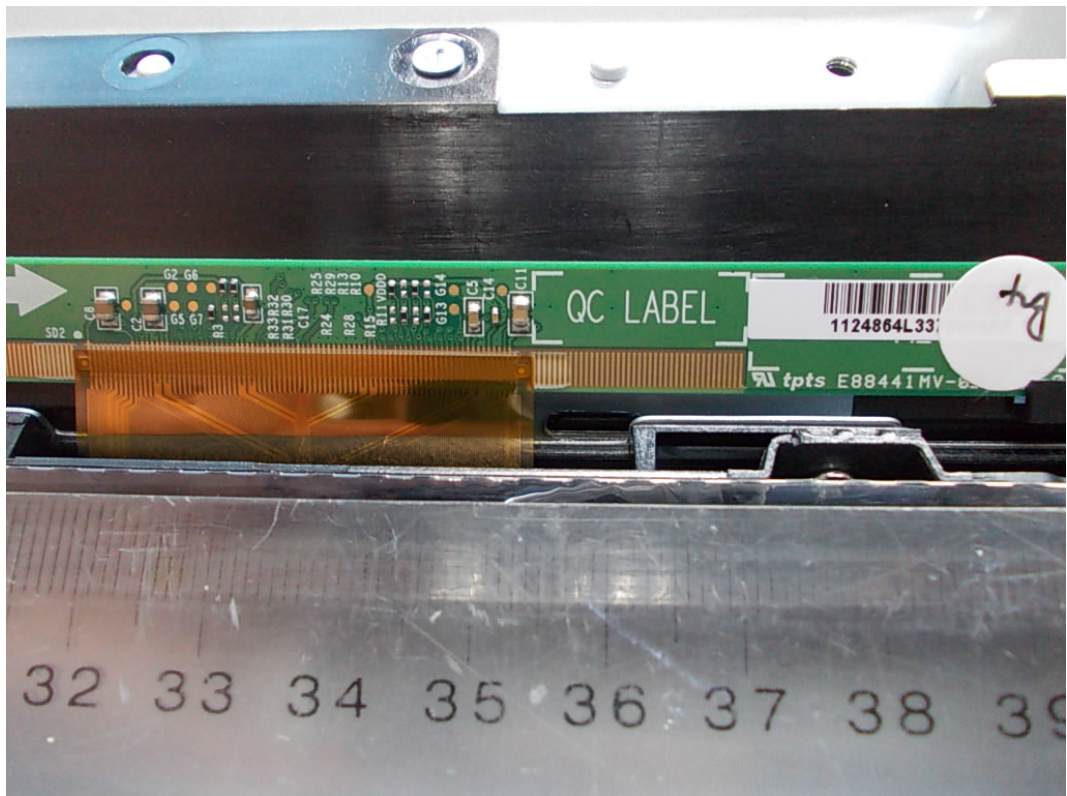


FIGURE 13
LED LCD TV (M/N: 32K20D)
LCD PANEL CONTROL BOARD (COMPONENT SIDE #3)

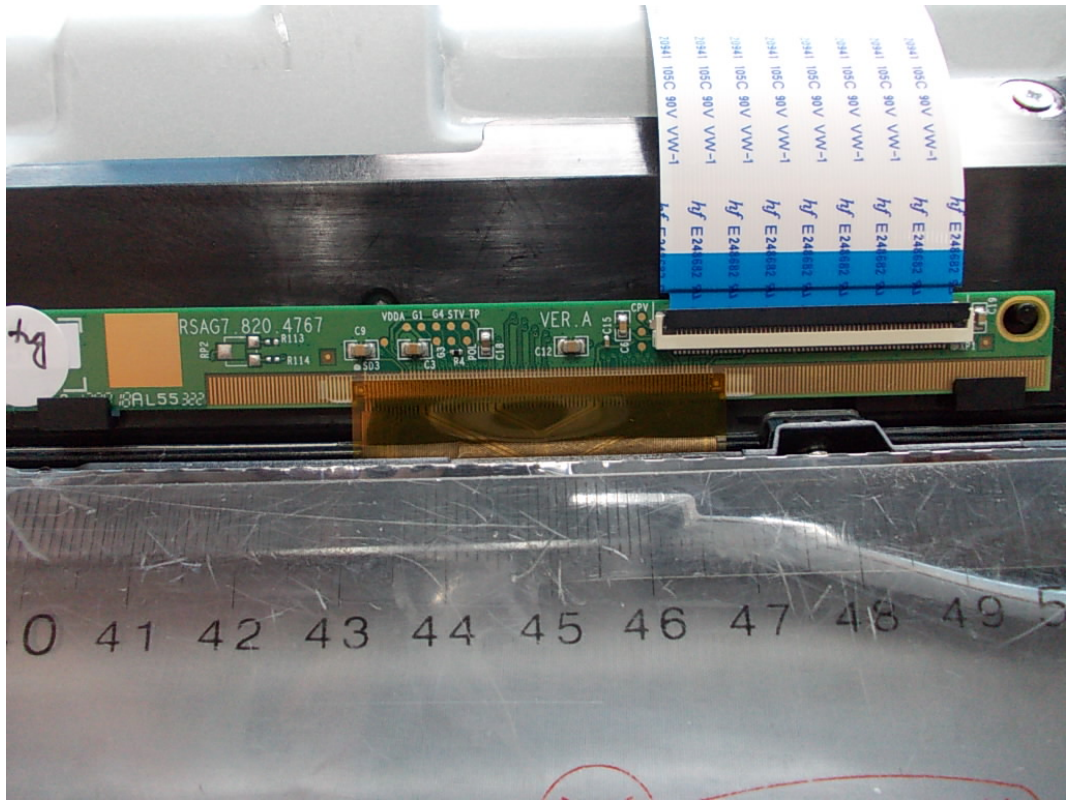


FIGURE 14
LED LCD TV (M/N: 32K20D)
LCD PANEL CONTROL BOARD (SOLDERED SIDE #1)

