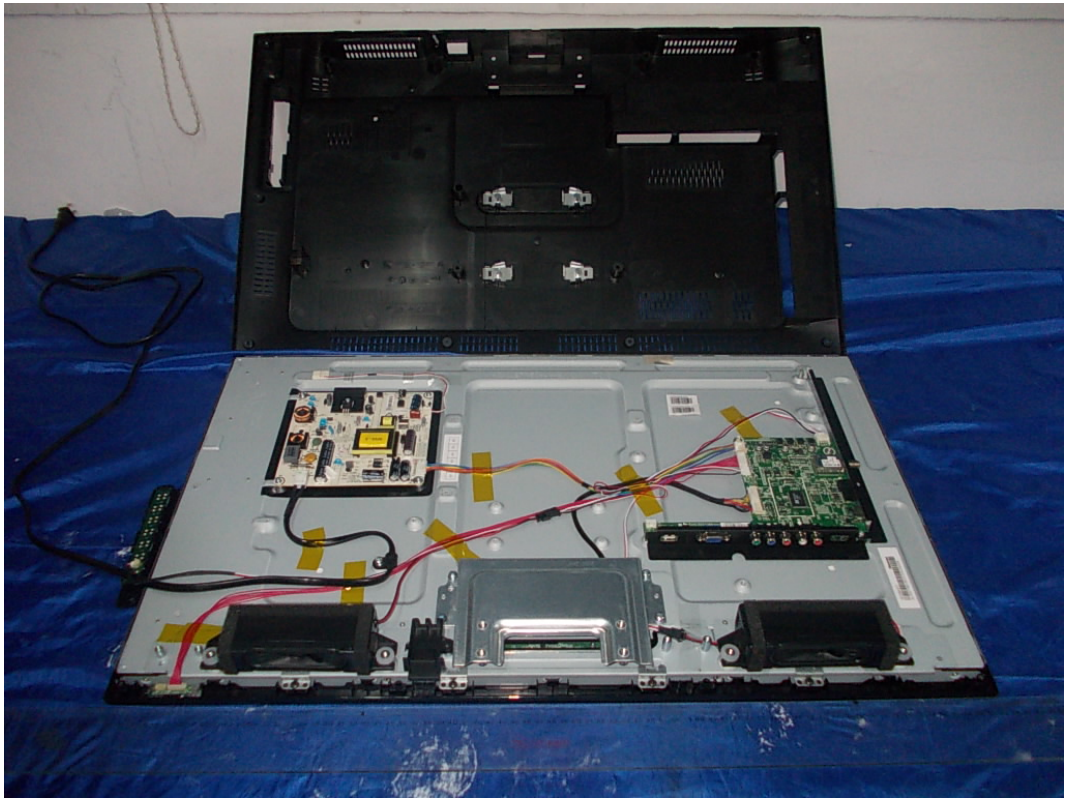


*FIGURE 1*  
*LED LCD TV (M/N: LHD32A300MUS)*  
*COVER REMOVED*



*FIGURE 2*  
*LED LCD TV (M/N: LHD32A300MUS)*  
*PANEL LABEL*

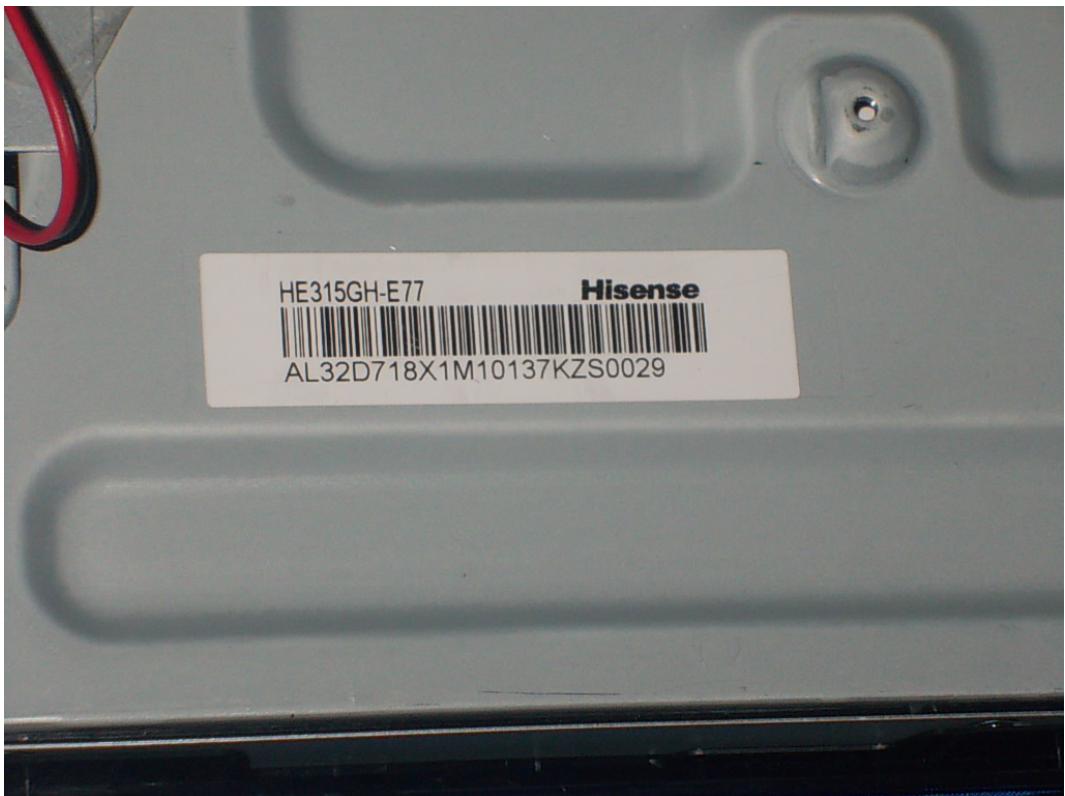




FIGURE 3  
LED LCD TV (M/N: LHD32A300MUS)  
POWER BOARD (COMPONENT SIDE)

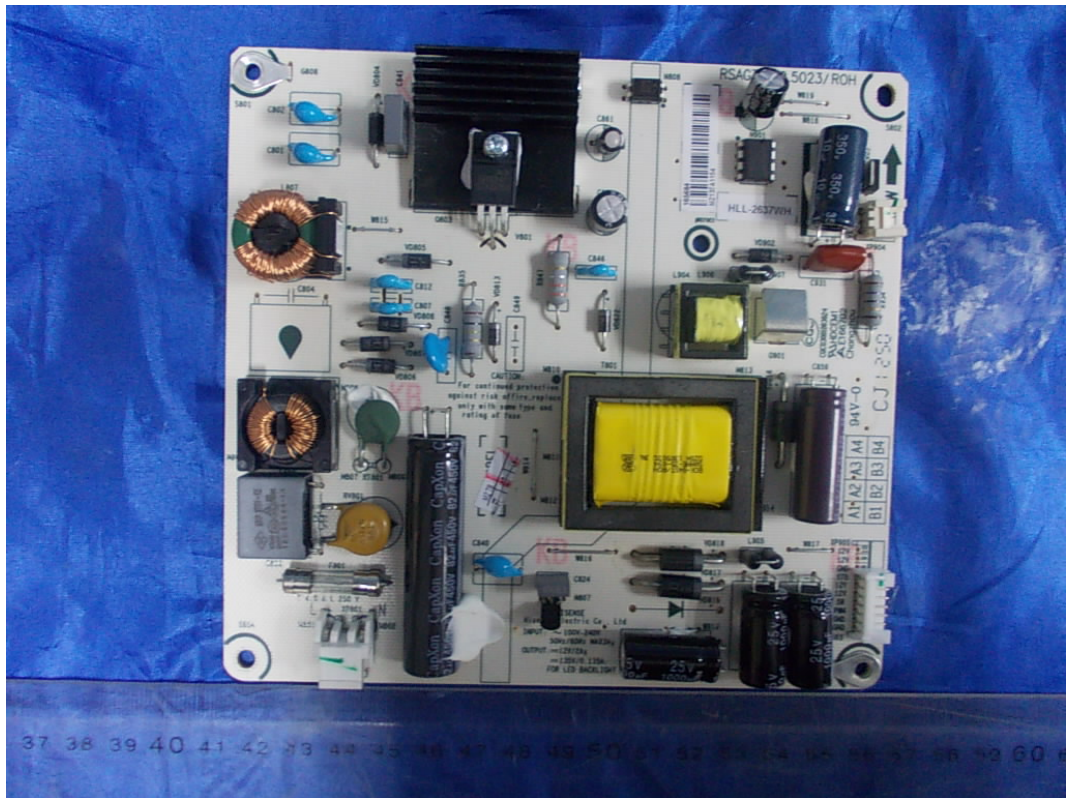
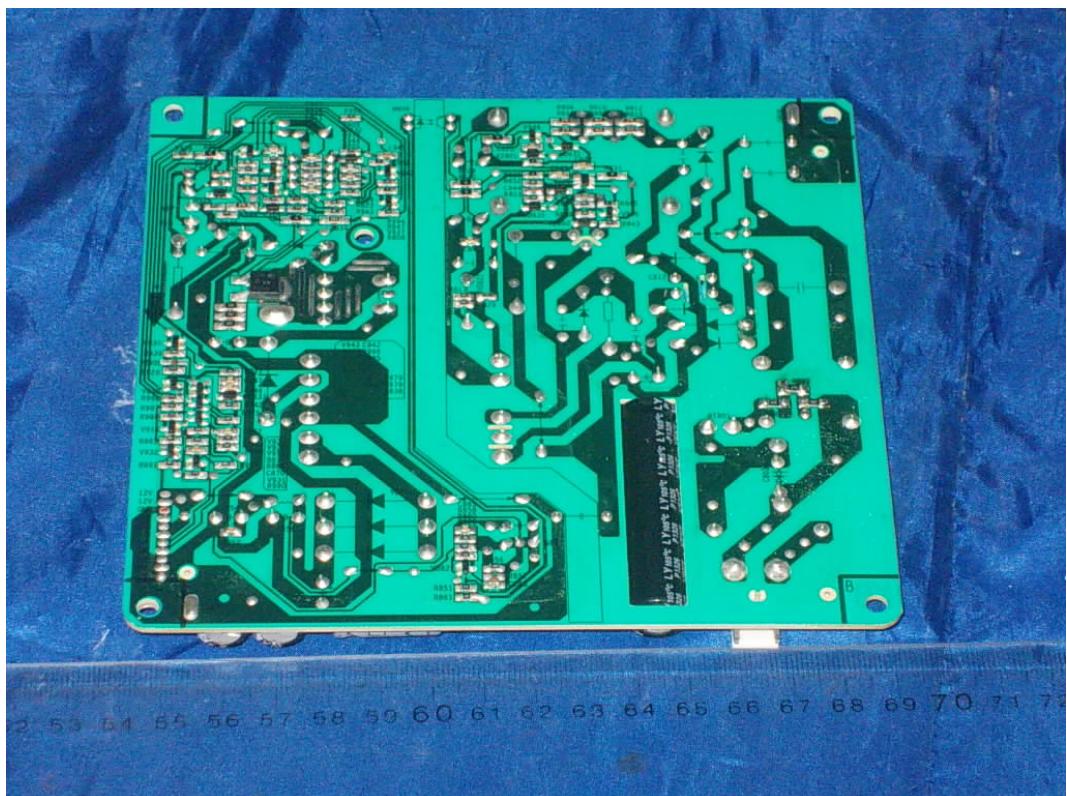
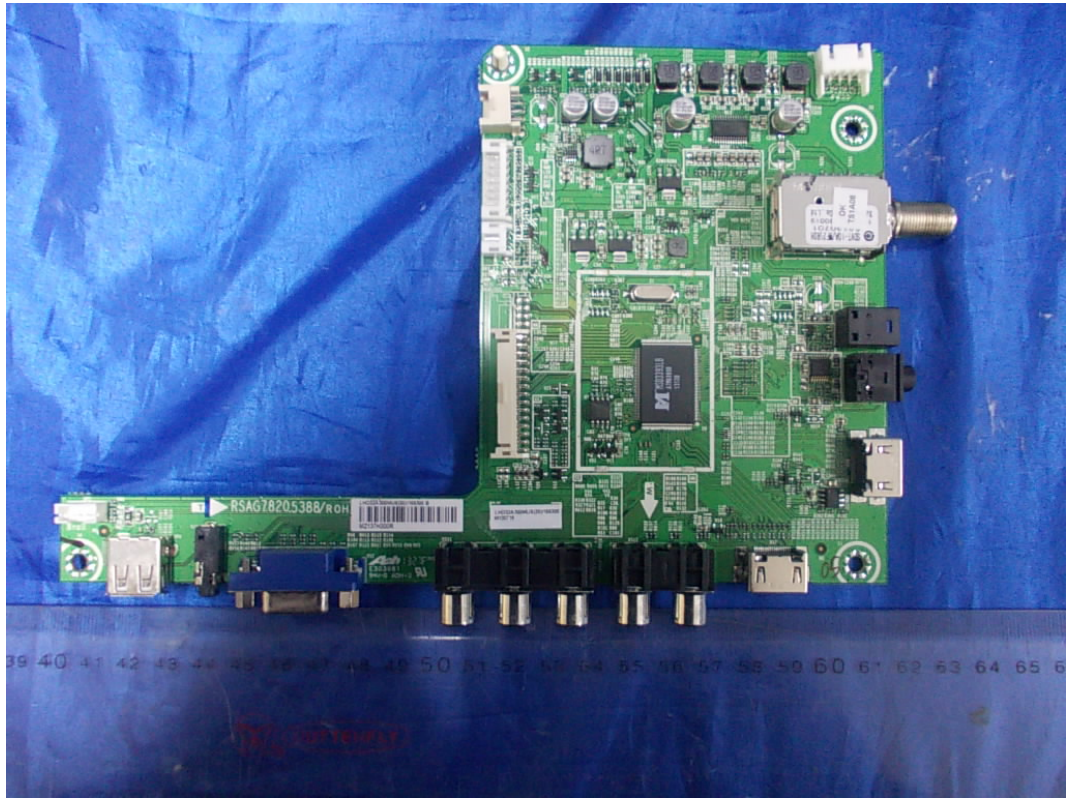


FIGURE 4  
LED LCD TV (M/N: LHD32A300MUS)  
POWER BOARD (SOLDERED SIDE)





*FIGURE 5*  
*LED LCD TV (M/N: LHD32A300MUS)*  
*MAIN BOARD (COMPONENT SIDE)*



*FIGURE 6*  
*LED LCD TV (M/N: LHD32A300MUS)*  
*MAIN BOARD (SOLDERED SIDE)*





FIGURE 7  
LED LCD TV (M/N: LHD32A300MUS)  
TUNER ON MAIN BOARD

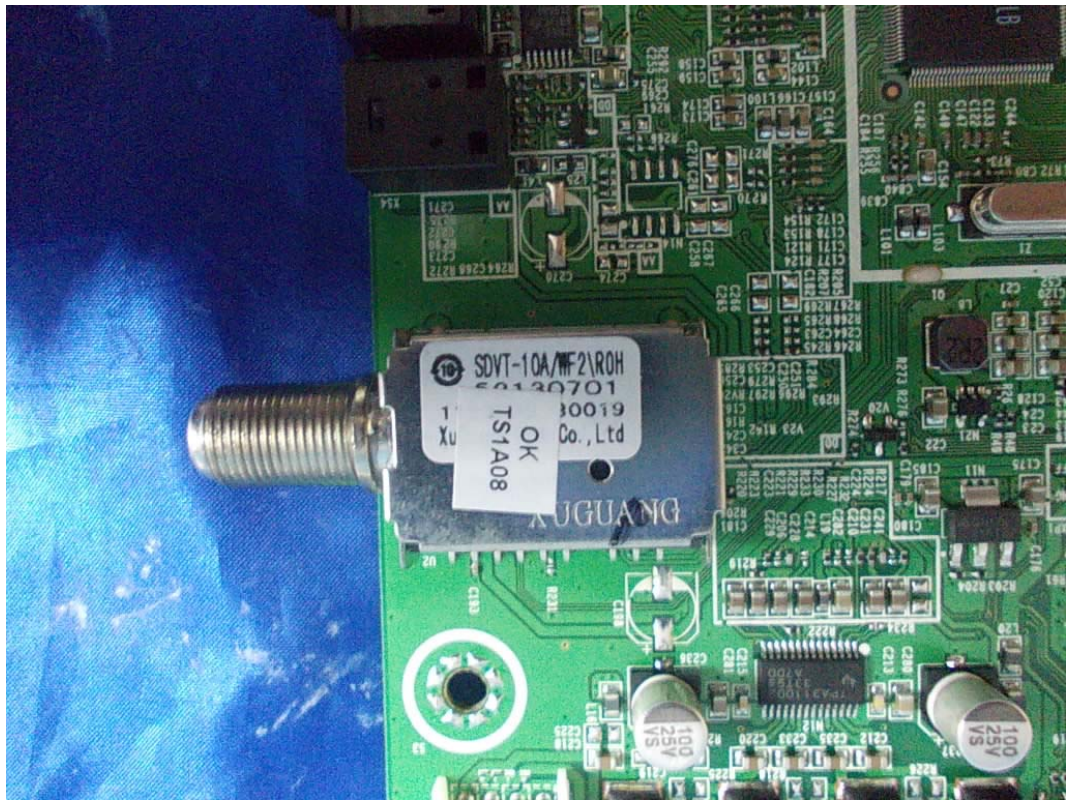
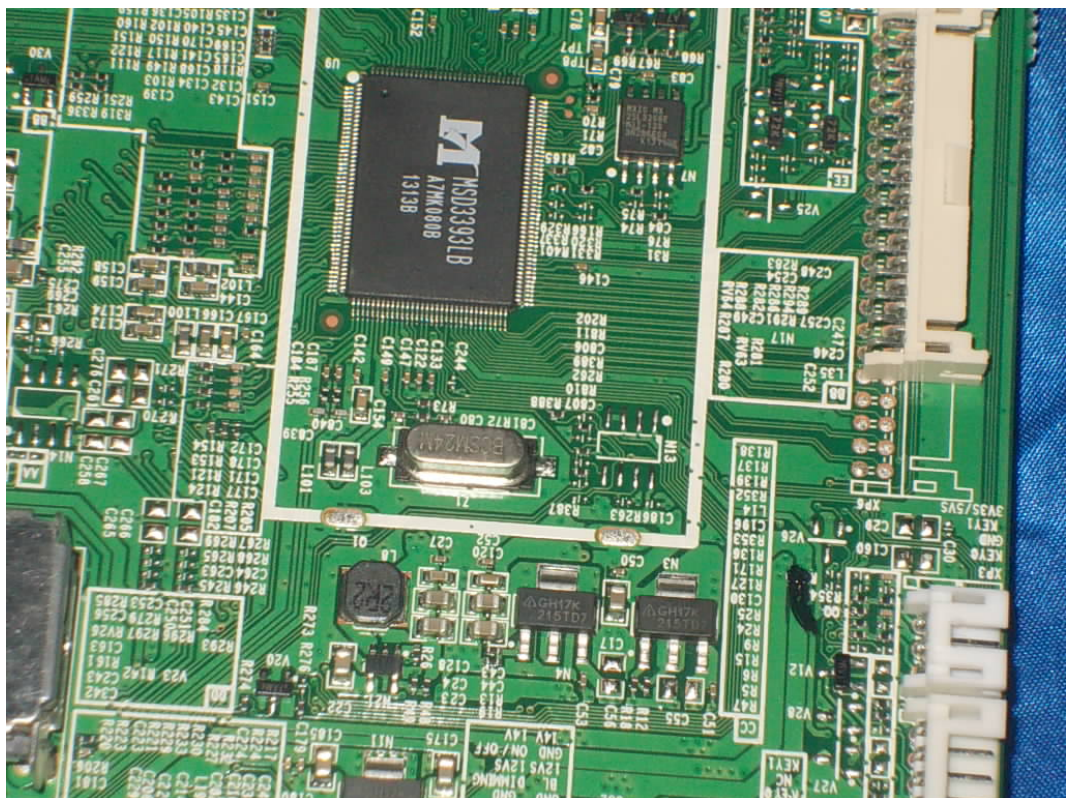
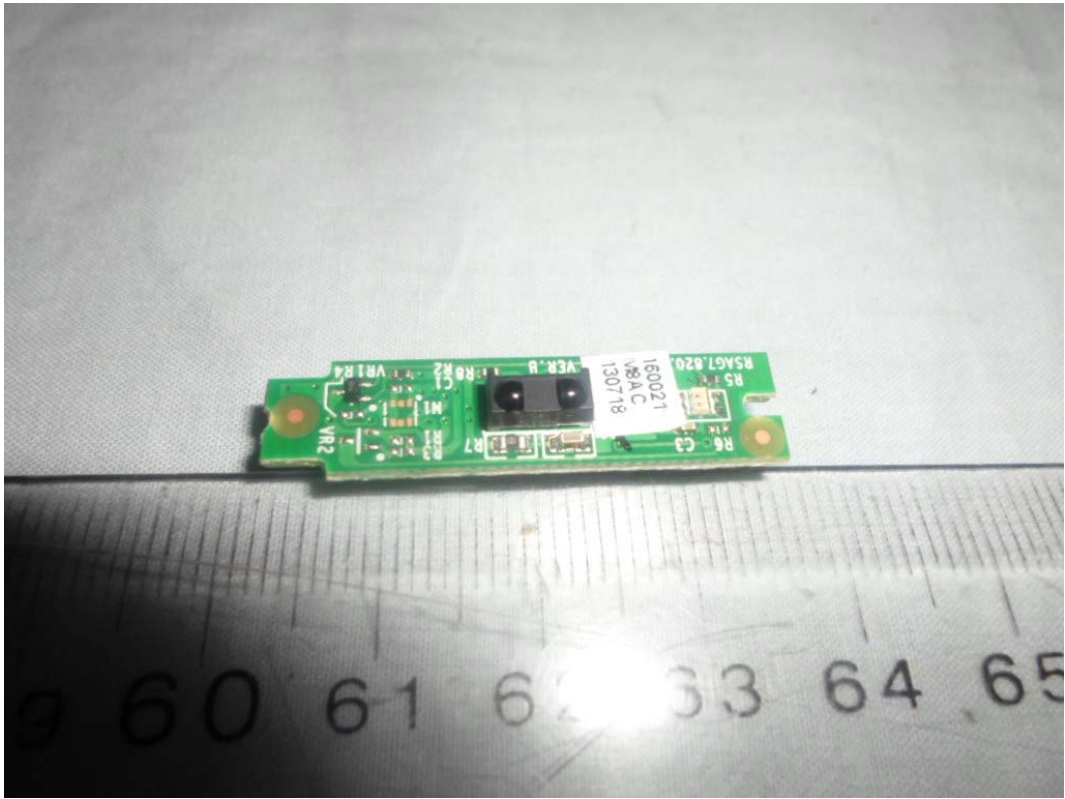


FIGURE 8  
LED LCD TV (M/N: LHD32A300MUS)  
CHIP & CRYSTAL ON MAIN BOARD

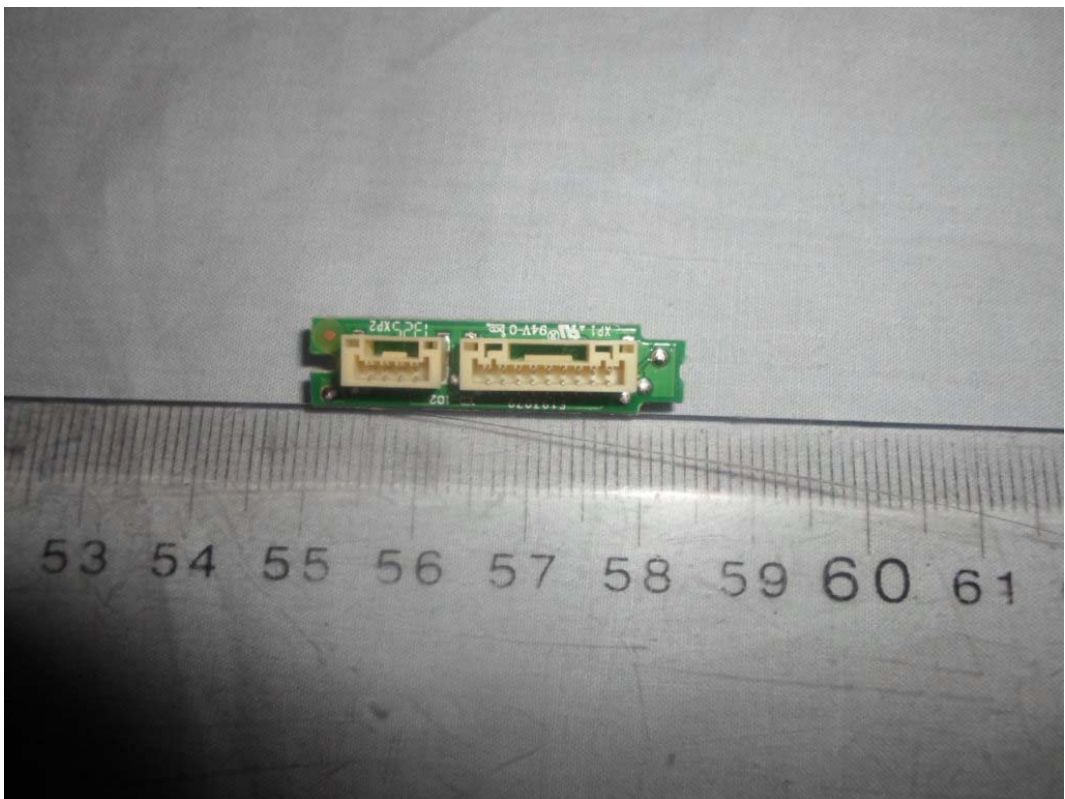




*FIGURE 9*  
*LED LCD TV (M/N: LHD32A300MUS)*  
*IR BOARD (COMPONENT SIDE)*



*FIGURE 10*  
*LED LCD TV (M/N: LHD32A300MUS)*  
*IR BOARD (SOLDERED SIDE)*



*FIGURE 11*  
*LED LCD TV (M/N: LHD32A300MUS)*  
*KEY BOARD (COMPONENT SIDE)*



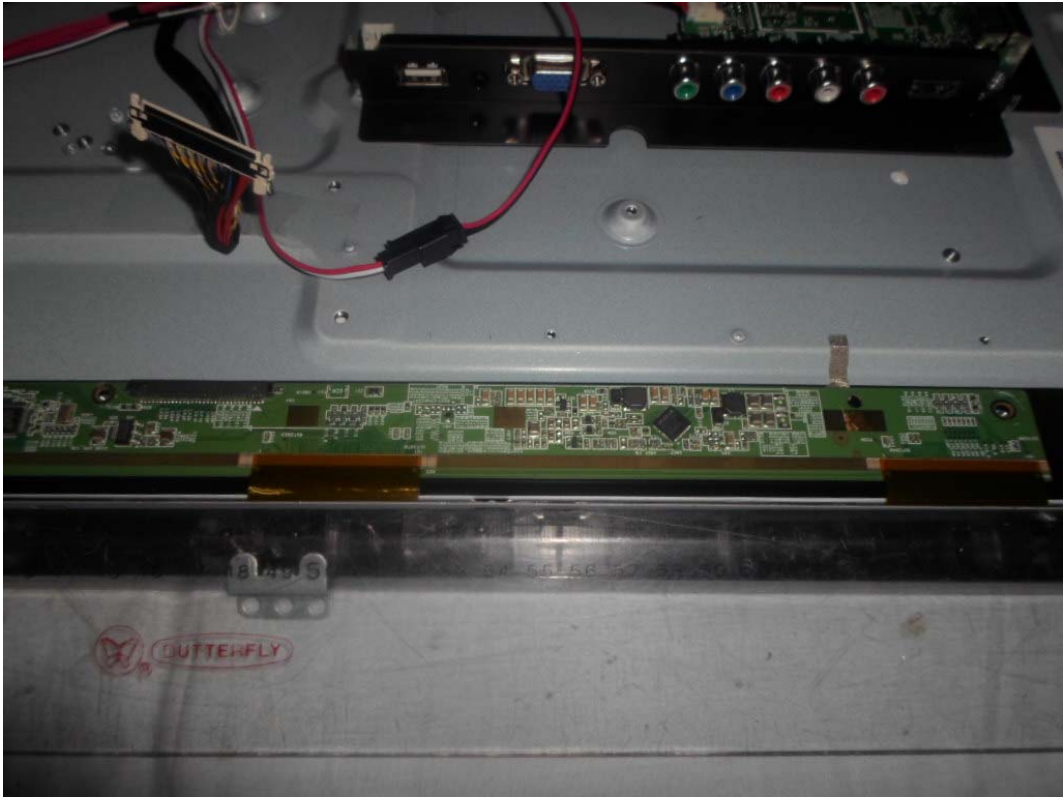
*FIGURE 12*  
*LED LCD TV (M/N: LHD32A300MUS)*  
*KEY BOARD (SOLDERED SIDE)*



*FIGURE 13*  
*LED LCD TV (M/N: LHD32A300MUS)*  
*LCD PANEL CONTROL BOARD (COMPONENT SIDE #1)*

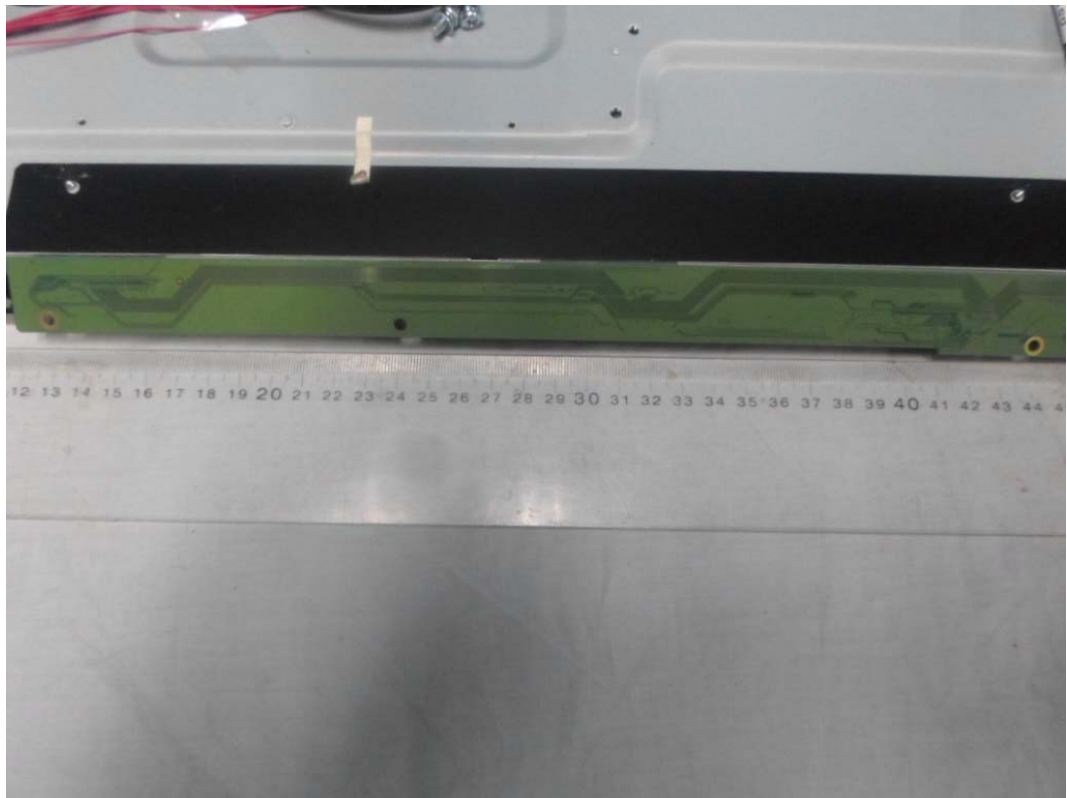


*FIGURE 14*  
*LED LCD TV (M/N: LHD32A300MUS)*  
*LCD PANEL CONTROL BOARD (COMPONENT SIDE #2)*





*FIGURE 15*  
*LED LCD TV (M/N: LHD32A300MUS)*  
*LCD PANEL CONTROL BOARD (SOLDERED SIDE #1)*



*FIGURE 16*  
*LED LCD TV (M/N: LHD32A300MUS)*  
*LCD PANEL CONTROL BOARD (SOLDERED SIDE #2)*

