

FIGURE 1
LED LCD TV (M/N: LHD32K20DWUS)
COVER REMOVED

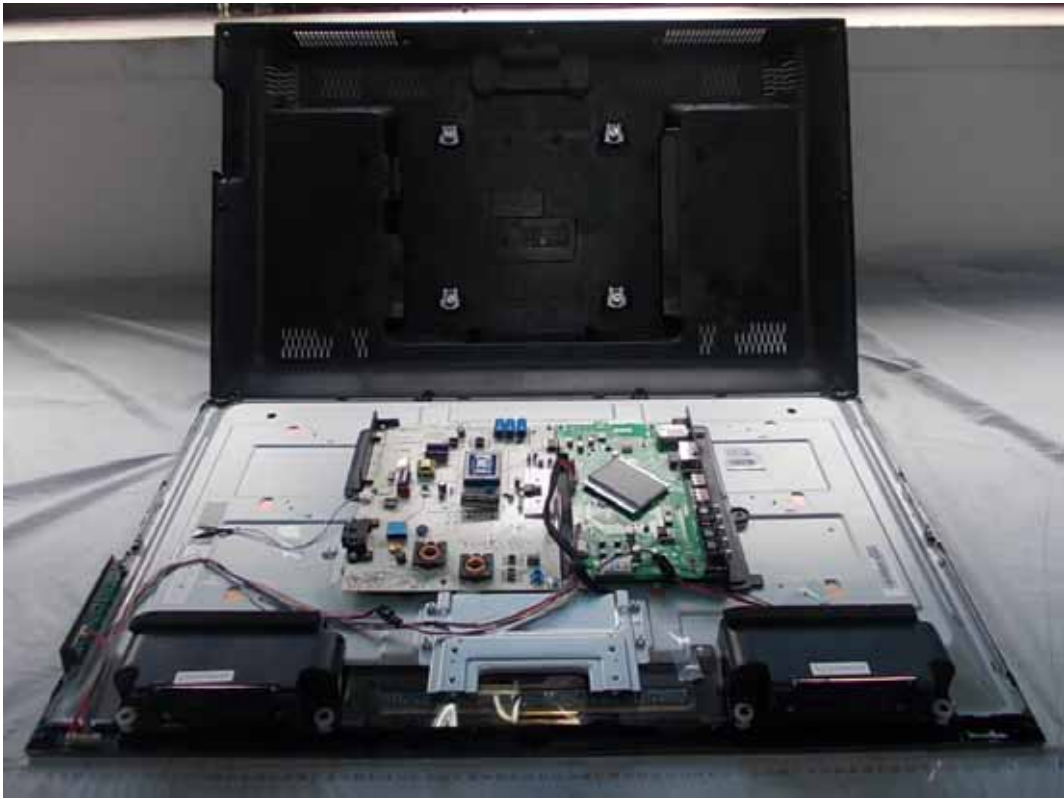


FIGURE 2
LED LCD TV (M/N: LHD32K20DWUS)
LCD PANEL LABEL



FIGURE 3
LED LCD TV (M/N: LHD32K20DWUS)
POWER BOARD (COMPONENT SIDE)

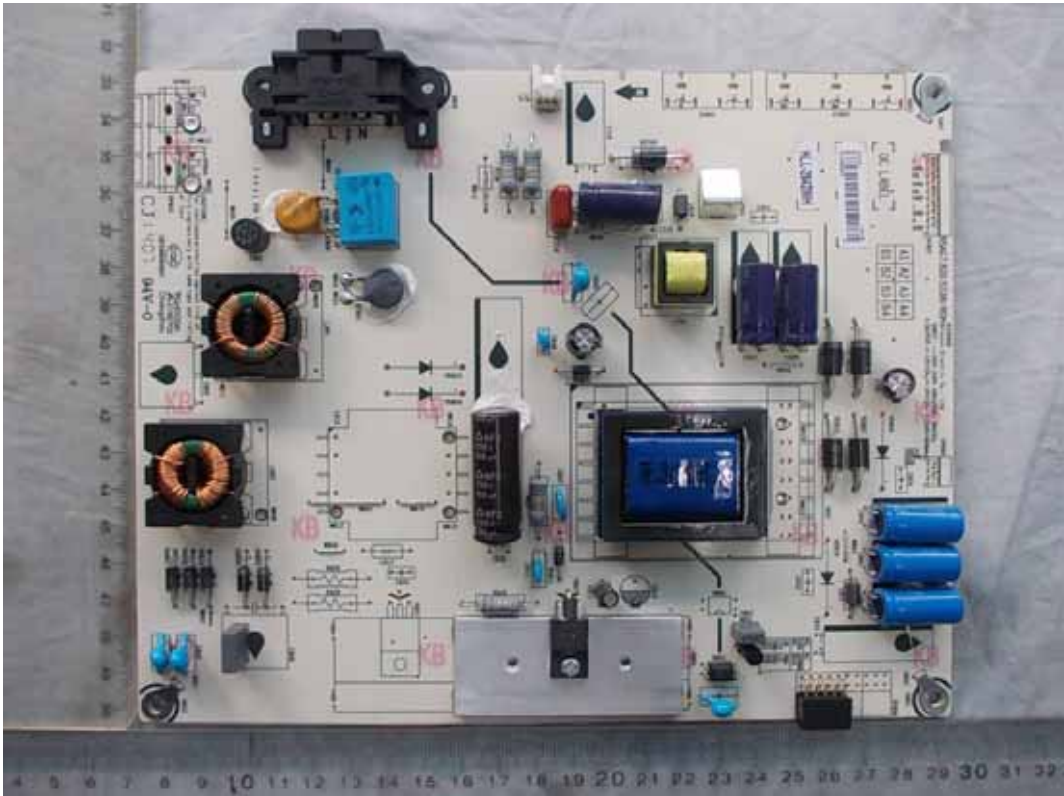


FIGURE 4
LED LCD TV (M/N: LHD32K20DWUS)
POWER BOARD (SOLDERED SIDE)

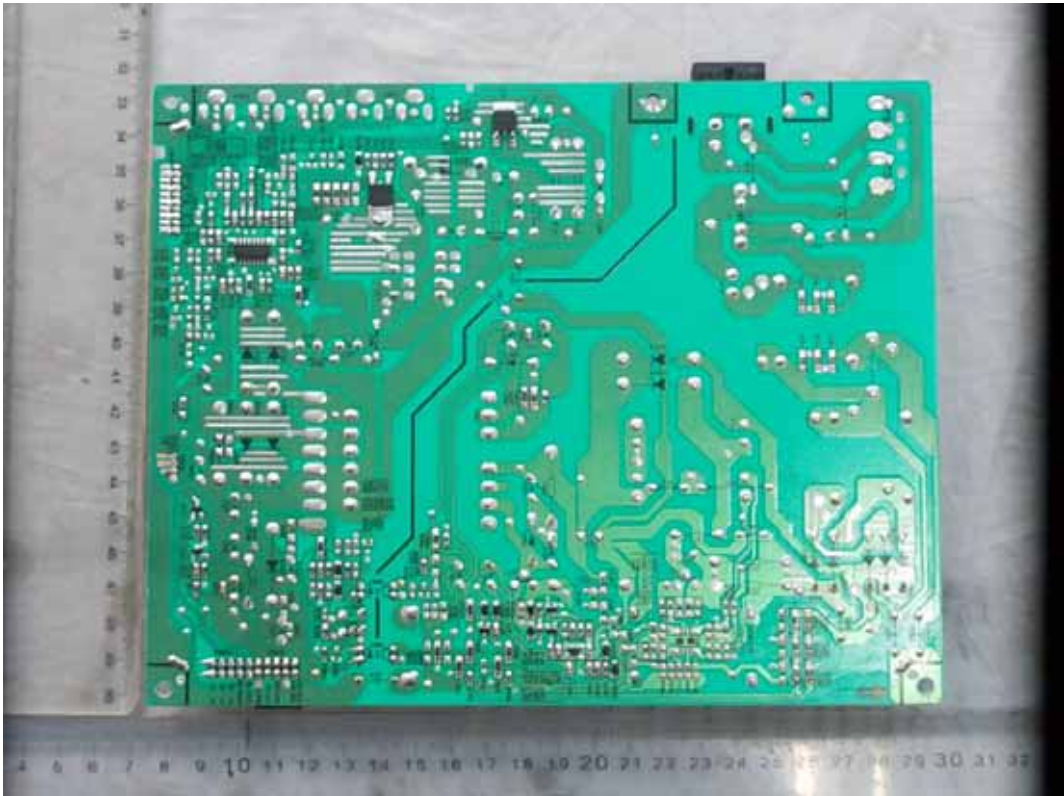


FIGURE 5
LED LCD TV (M/N: LHD32K20DWUS)
MAIN BOARD (COMPONENT SIDE)



FIGURE 6
LED LCD TV (M/N: LHD32K20DWUS)
MAIN BOARD (SOLDERED SIDE)

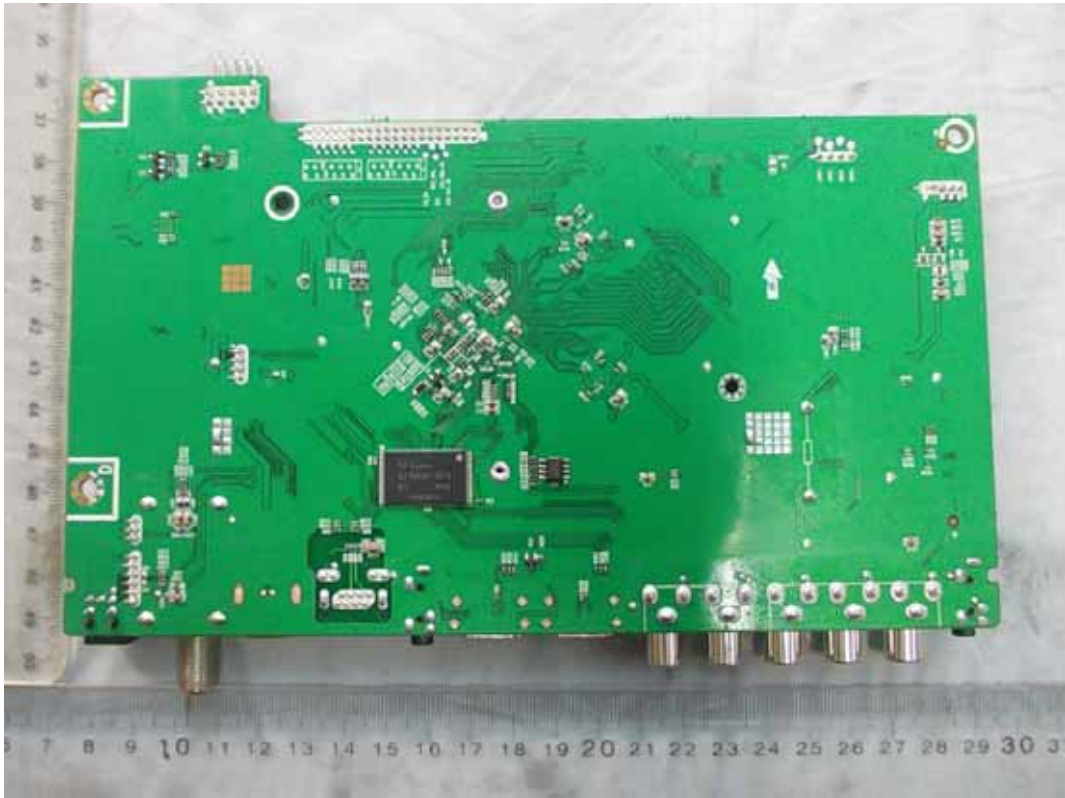


FIGURE 7
LED LCD TV (M/N: LHD32K20DWUS)
TUNER ON MAIN BOARD



FIGURE 8
LED LCD TV (M/N: LHD32K20DWUS)
CHIP ON MAIN BOARD



FIGURE 10
LED LCD TV (M/N: LHD32K20DWUS)
KEY BOARD (COMPONENT SIDE)



FIGURE 11
LED LCD TV (M/N: LHD32K20DWUS)
KEY BOARD (SOLDERED SIDE)

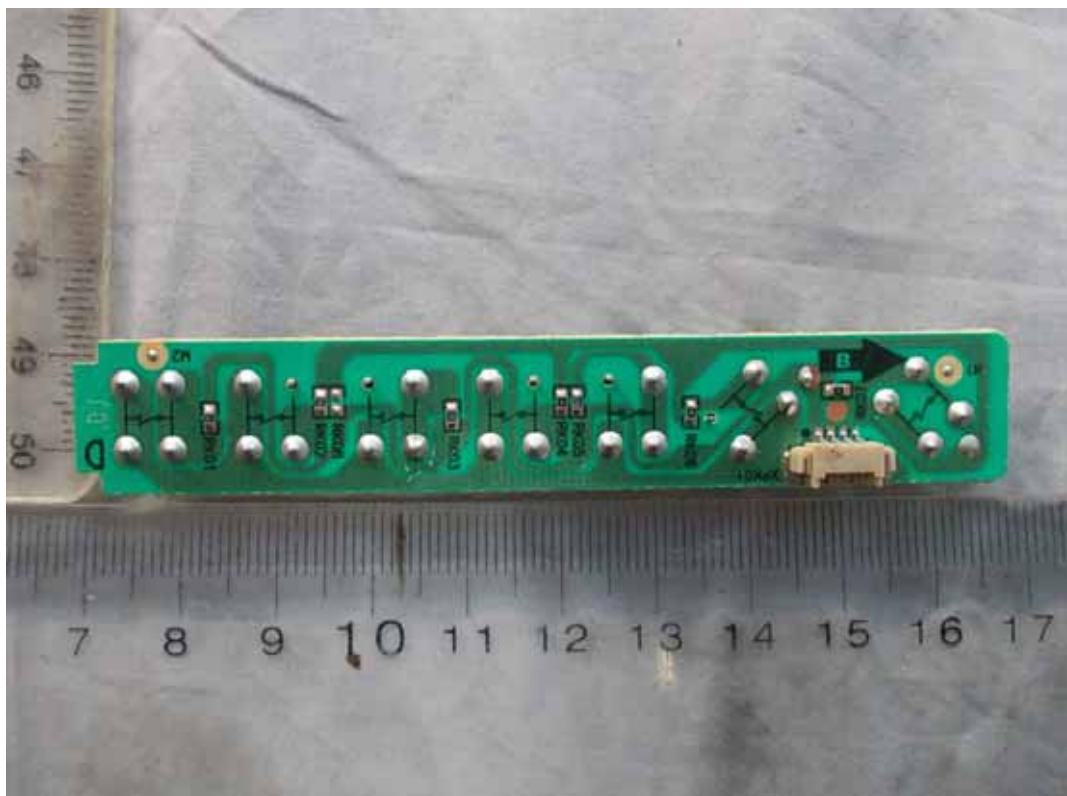


FIGURE 12
LED LCD TV (M/N: LHD32K20DWUS)
IR BOARD (COMPONENT SIDE)

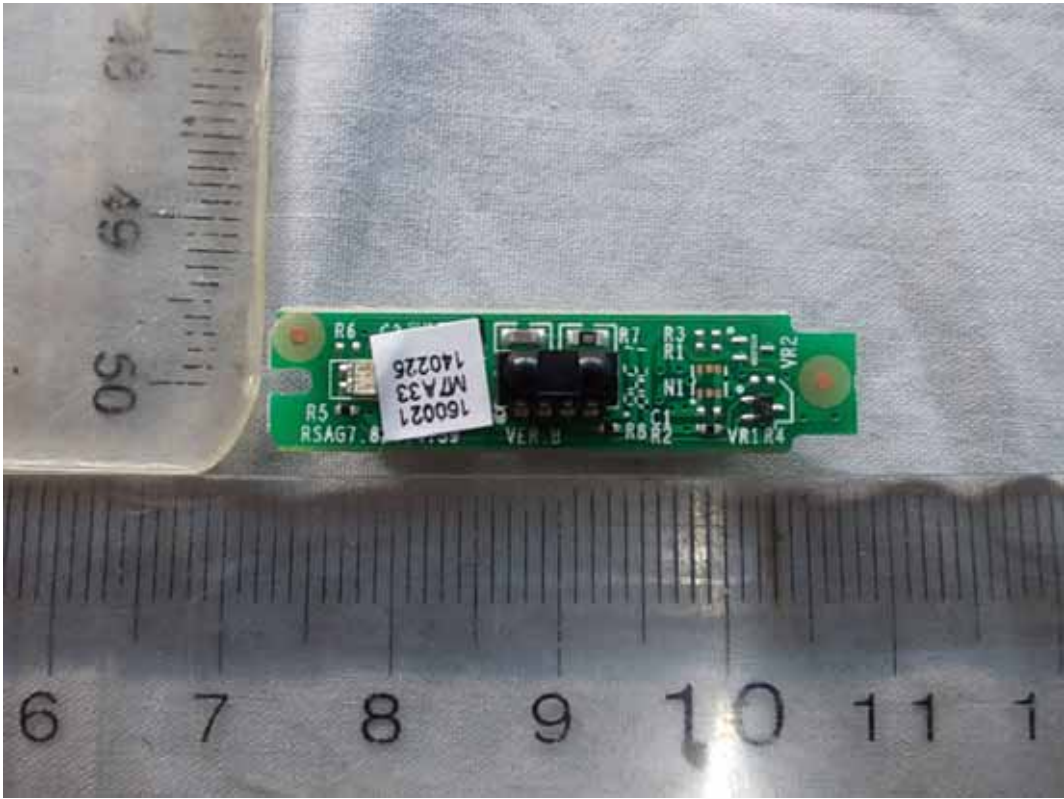


FIGURE 13
LED LCD TV (M/N: LHD32K20DWUS)
IR BOARD (SOLDERED SIDE)

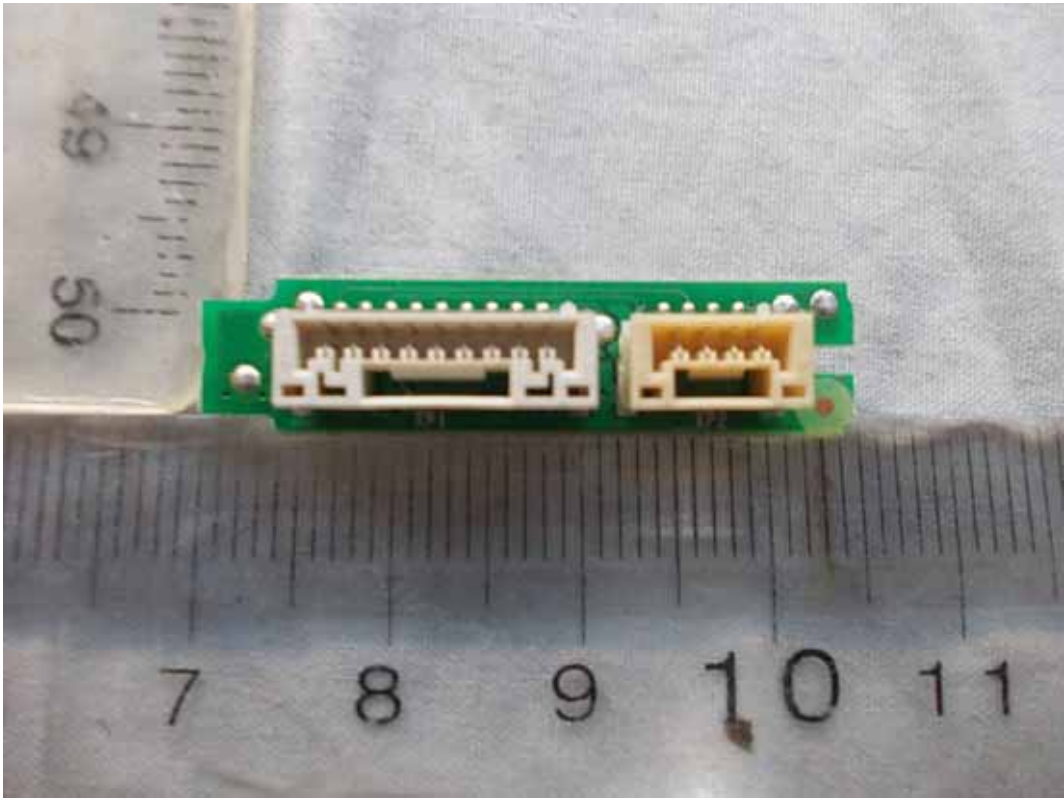


FIGURE 14
LED LCD TV (M/N: LHD32K20DWUS)
LCD PANEL CONTROL BOARD (COMPONENT SIDE)



FIGURE 15
LED LCD TV (M/N: LHD32K20DWUS)
LCD PANEL CONTROL BOARD (SOLDERED SIDE)

