

*FIGURE 1*  
*LED LCD TV (M/N: LHD32K316MH)*  
*COVER REMOVED*



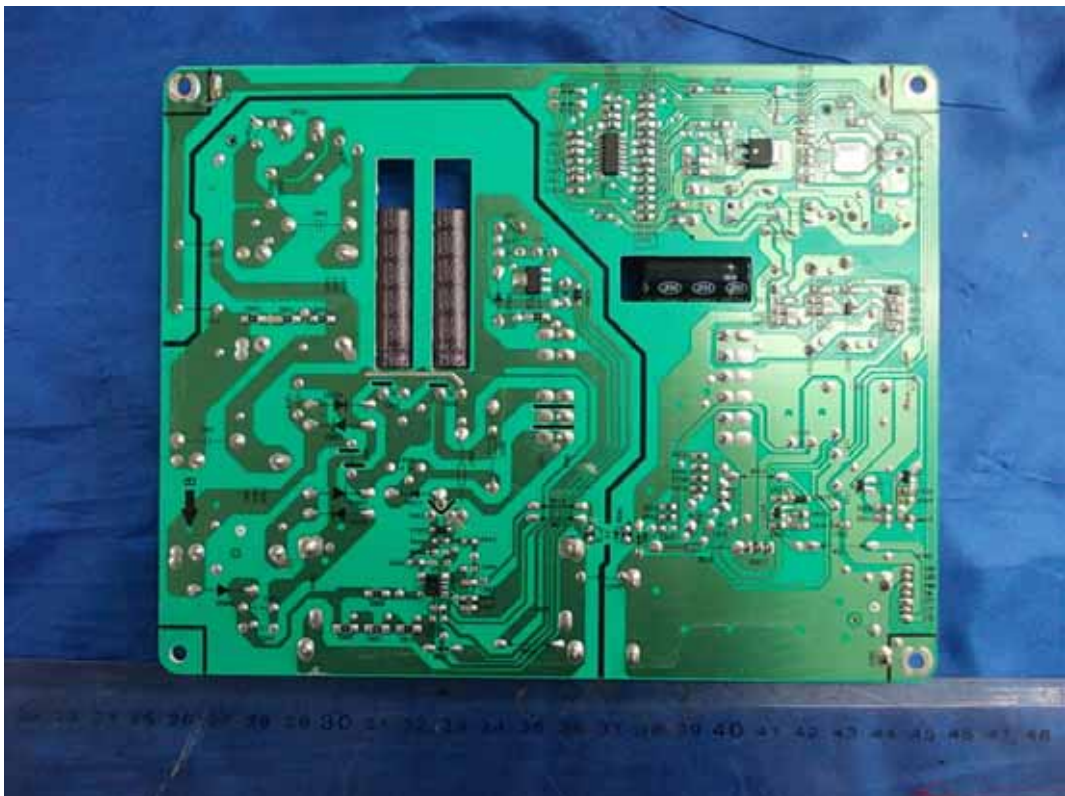
*FIGURE 2*  
*LED LCD TV (M/N: LHD32K316MH)*  
*PANEL LABEL*



*FIGURE 3*  
*LED LCD TV (M/N: LHD32K316MH)*  
*POWER BOARD (COMPONENT SIDE)*



*FIGURE 4*  
*LED LCD TV (M/N: LHD32K316MH)*  
*POWER BOARD (SOLDERED SIDE)*



*FIGURE 5*  
*LED LCD TV (M/N: LHD32K316MH)*  
*MAIN BOARD (COMPONENT SIDE)*



*FIGURE 6*  
*LED LCD TV (M/N: LHD32K316MH)*  
*MAIN BOARD (SOLDERED SIDE)*



FIGURE 7  
LED LCD TV (M/N: LHD32K316MH)  
TUNER ON MAIN BOARD



FIGURE 8  
LED LCD TV (M/N: LHD32K316MH)  
CHIP ON MAIN BOARD



FIGURE 9  
LED LCD TV (M/N: LHD32K316MH)  
CRYSTAL #1 ON MAIN BOARD



FIGURE 10  
LED LCD TV (M/N: LHD32K316MH)  
CRYSTAL #2 ON MAIN BOARD

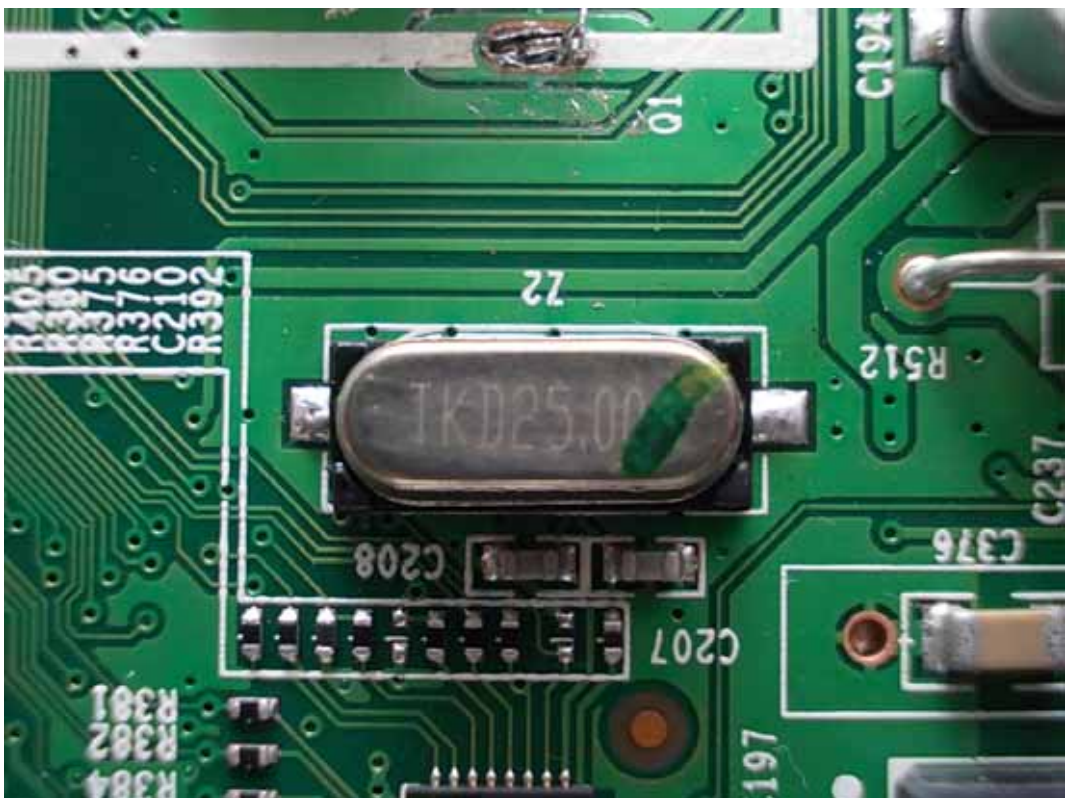


FIGURE 11  
LED LCD TV (M/N: LHD32K316MH)  
CRYSTAL #3 ON MAIN BOARD



FIGURE 12  
LED LCD TV (M/N: LHD32K316MH)  
KEY BOARD (COMPONENT SIDE)

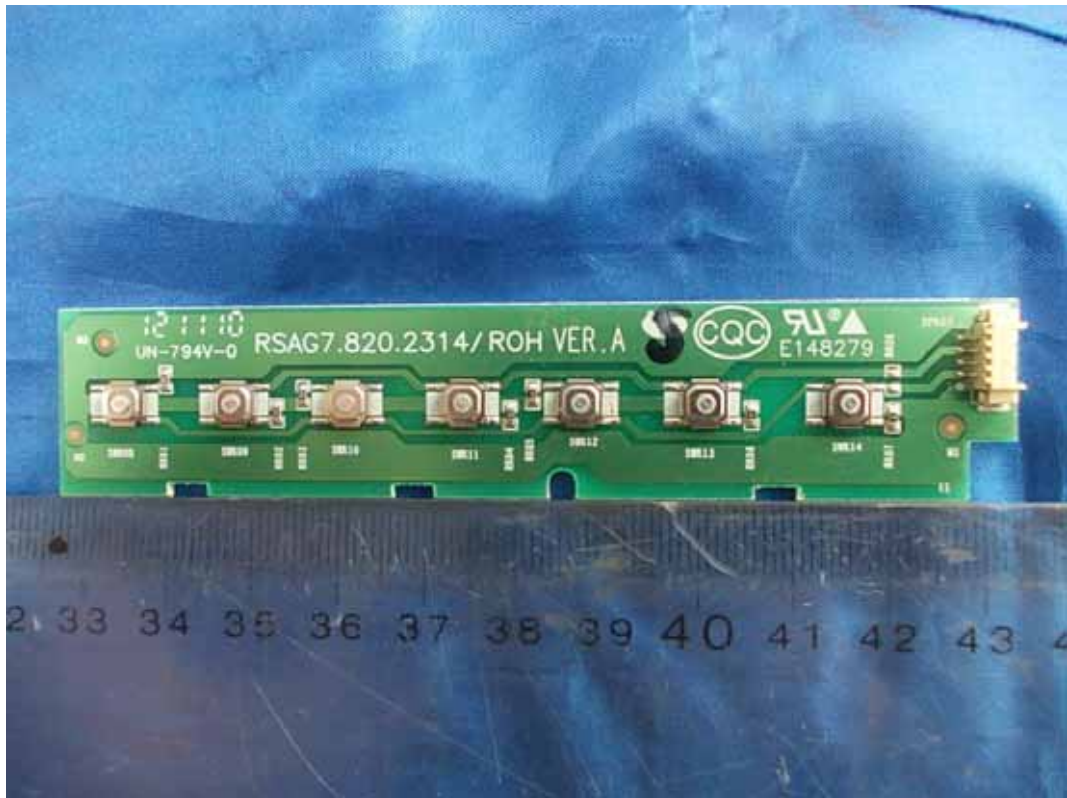
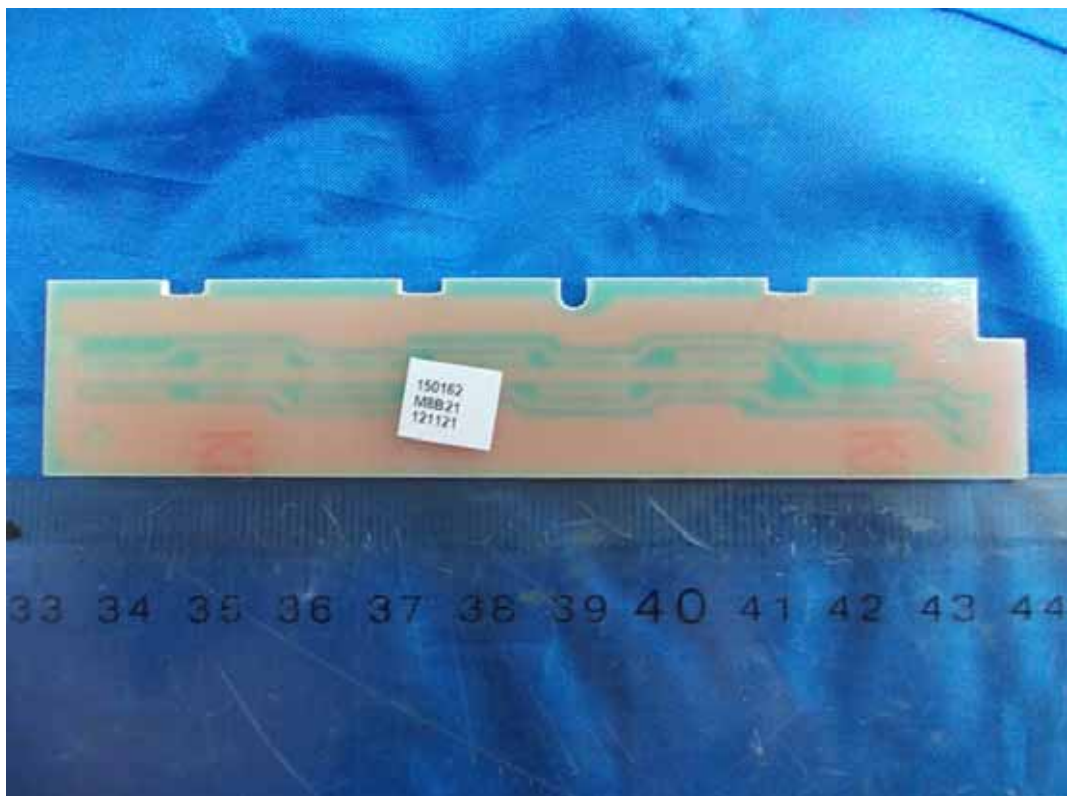


FIGURE 13  
LED LCD TV (M/N: LHD32K316MH)  
KEY BOARD (SOLDERED SIDE)



*FIGURE 14*  
*LED LCD TV (M/N: LHD32K316MH)*  
*LCD PANEL BOARD (COMPONENT SIDE #1)*



*FIGURE 15*  
*LED LCD TV (M/N: LHD32K316MH)*  
*LCD PANEL BOARD (COMPONENT SIDE #2)*





*FIGURE 16*  
*LED LCD TV (M/N: LHD32K316MH)*  
*LCD PANEL BOARD (SOLDERED SIDE #1)*



*FIGURE 17*  
*LED LCD TV (M/N: LHD32K316MH)*  
*LCD PANEL BOARD (SOLDERED SIDE #2)*

