

FIGURE 1
LCD TV (M/N: LHD32K26NUS)
COVER REMOVED

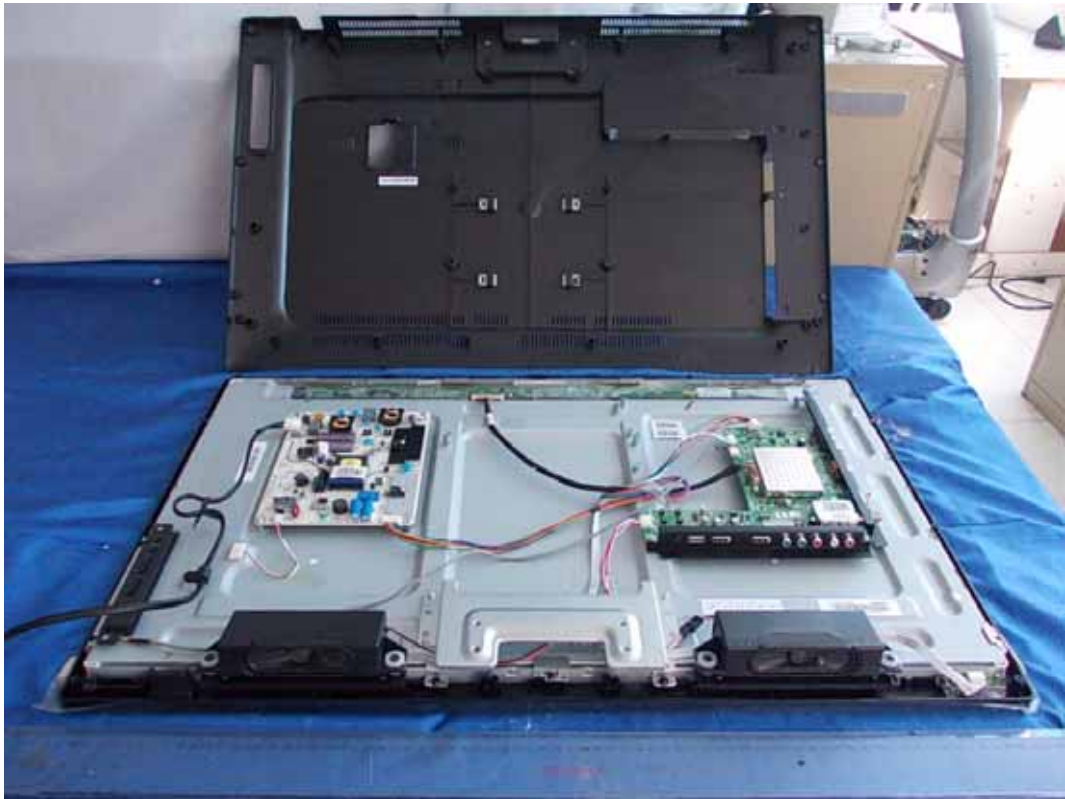


FIGURE 2
LCD TV (M/N: LHD32K26NUS)
POWER BOARD (COMPONENT SIDE)



FIGURE 3
LCD TV (M/N: LHD32K26NUS)
POWER BOARD (SOLDERED SIDE)



FIGURE 4
LCD TV (M/N: LHD32K26NUS)
MAIN BOARD (COMPONENT SIDE)



FIGURE 5
LCD TV (M/N: LHD32K26NUS)
MAIN BOARD (SOLDERED SIDE)

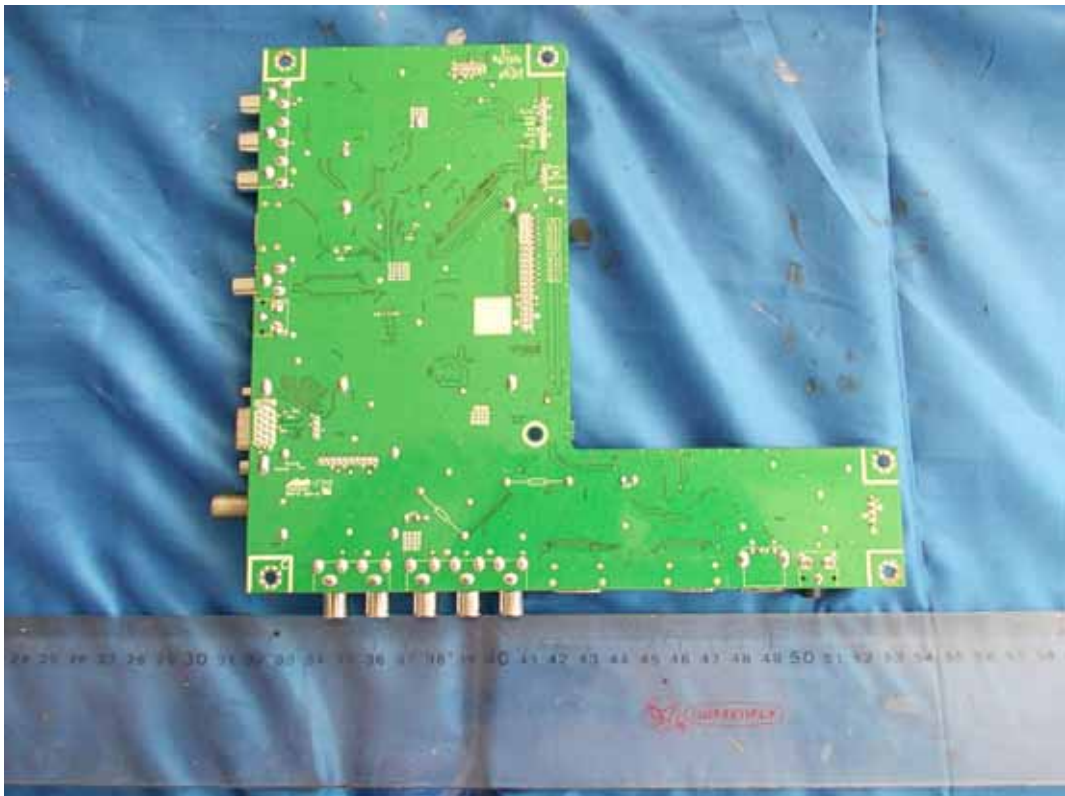


FIGURE 6
LCD TV (M/N: LHD32K26NUS)
CRYSTAL ON MAIN BOARD



FIGURE 7
LCD TV (M/N: LHD32K26NUS)
CHIP ON MAIN BOARD



FIGURE 8
LCD TV (M/N: LHD32K26NUS)
TUNER ON MAIN BOARD



FIGURE 9
LCD TV (M/N: LHD32K26NUS)
KEY BOARD (COMPONENT SIDE)

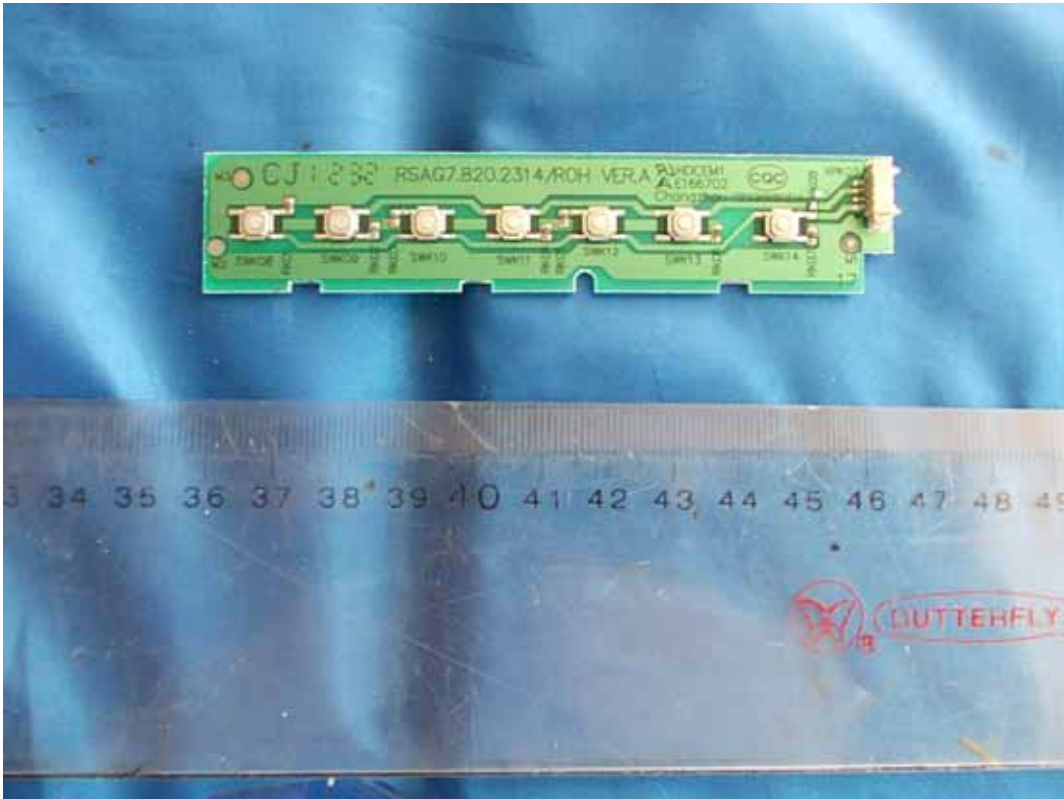


FIGURE 10
LCD TV (M/N: LHD32K26NUS)
KEY BOARD (SOLDERED SIDE)

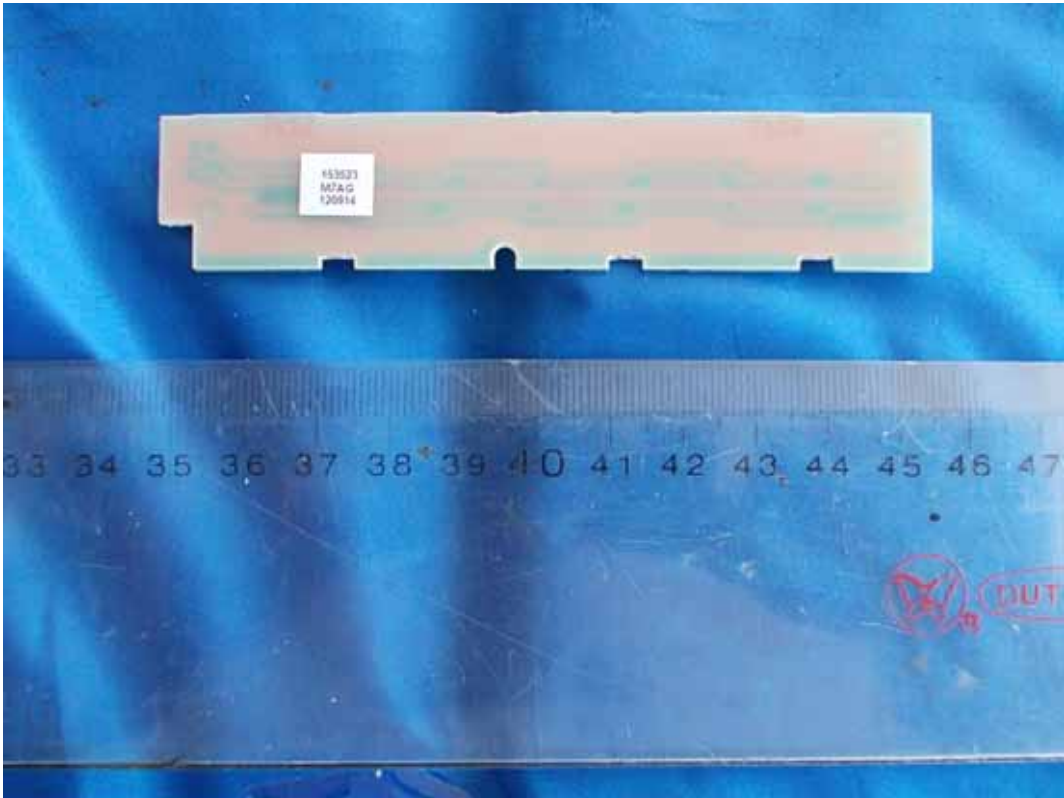


FIGURE 11
LCD TV (M/N: LHD32K26NUS)
IR BOARD (COMPONENT SIDE)

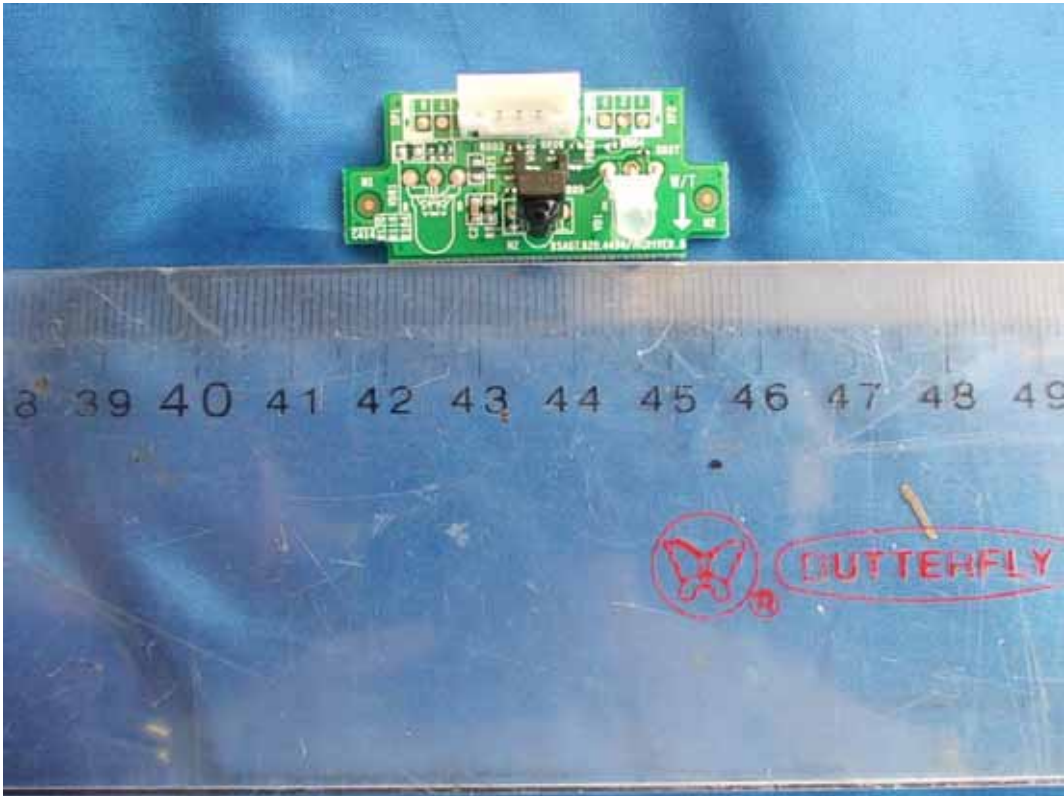


FIGURE 12
LCD TV (M/N: LHD32K26NUS)
IR BOARD (SOLDERED SIDE)



FIGURE 13
LCD TV (M/N: LHD32K26NUS)
LCD PANEL CONTROL BOARD (COMPONENT SIDE-1)



FIGURE 14
LCD TV (M/N: LHD32K26NUS)
LCD PANEL CONTROL BOARD (COMPONENT SIDE-2)



FIGURE 15
LCD TV (M/N: LHD32K26NUS)
LCD PANEL CONTROL BOARD (COMPONENT SIDE-3)



FIGURE 16
LCD TV (M/N: LHD32K26NUS)
LCD PANEL CONTROL BOARD (SOLDERED SIDE-1)



FIGURE 17
LCD TV (M/N: LHD32K26NUS)
LCD PANEL CONTROL BOARD (SOLDERED SIDE-2)

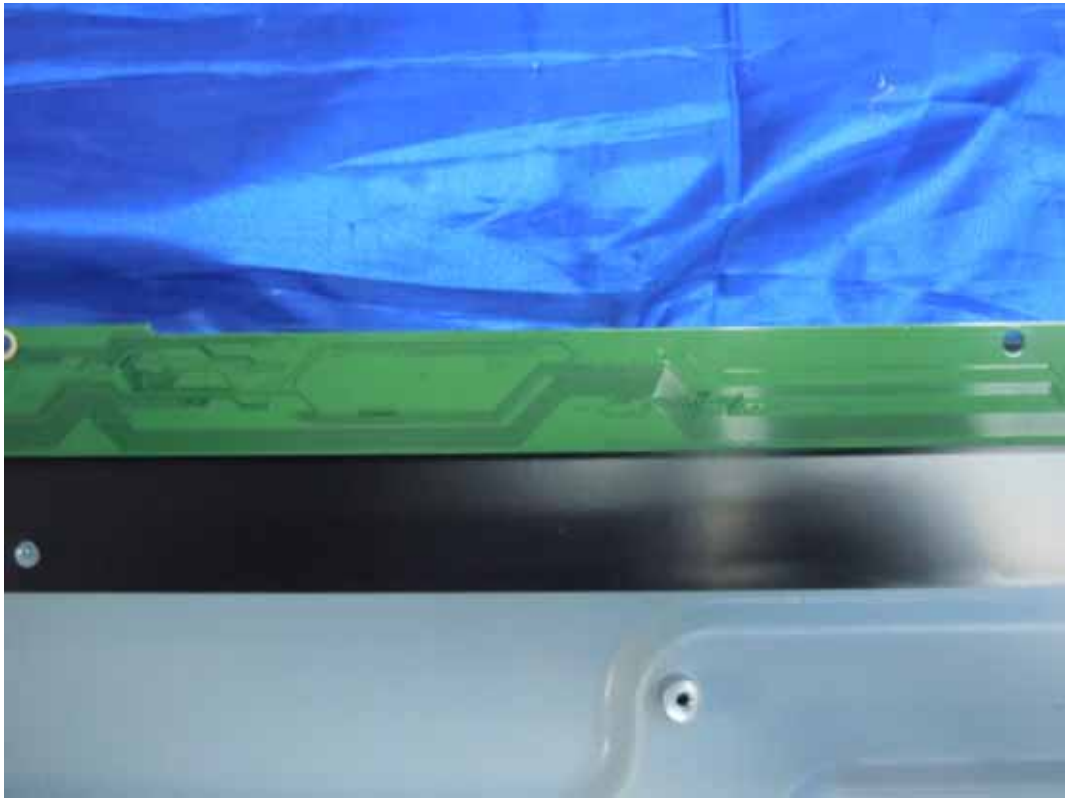


FIGURE 18
LCD TV (M/N: LHD32K26NUS)
LCD PANEL CONTROL BOARD (SOLDERED SIDE-3)



FIGURE 19
LCD TV (M/N: LHD32K26NUS)
LABEL ON LCD PANEL



FIGURE 20
LCD TV (M/N: LHD32K20NUS)
GENERAL VIEW (FRONT VIEW)

