

FIGURE 1
LED LCD TV (M/N: LHD32D77WUS)
COVER REMOVED

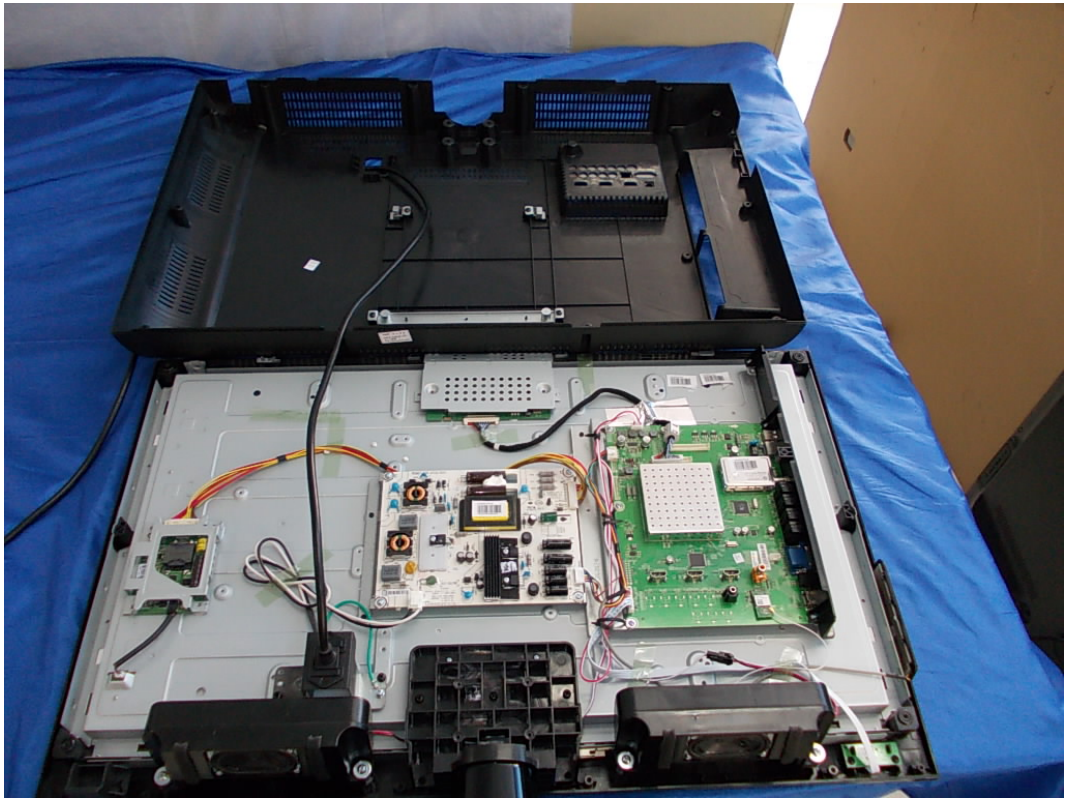


FIGURE 2
LED LCD TV (M/N: LHD32D77WUS)
POWER BOARD (COMPONENT SIDE)

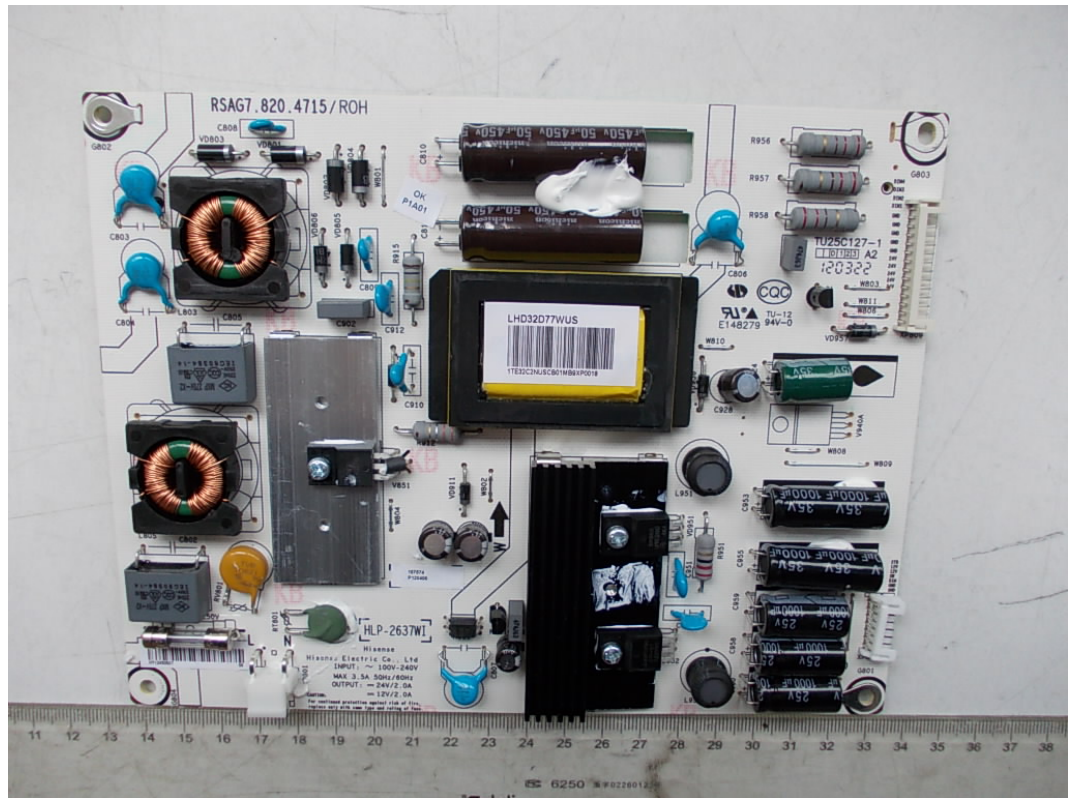


FIGURE 3
LED LCD TV (M/N: LHD32D77WUS)
POWER BOARD (SOLDERED SIDE)

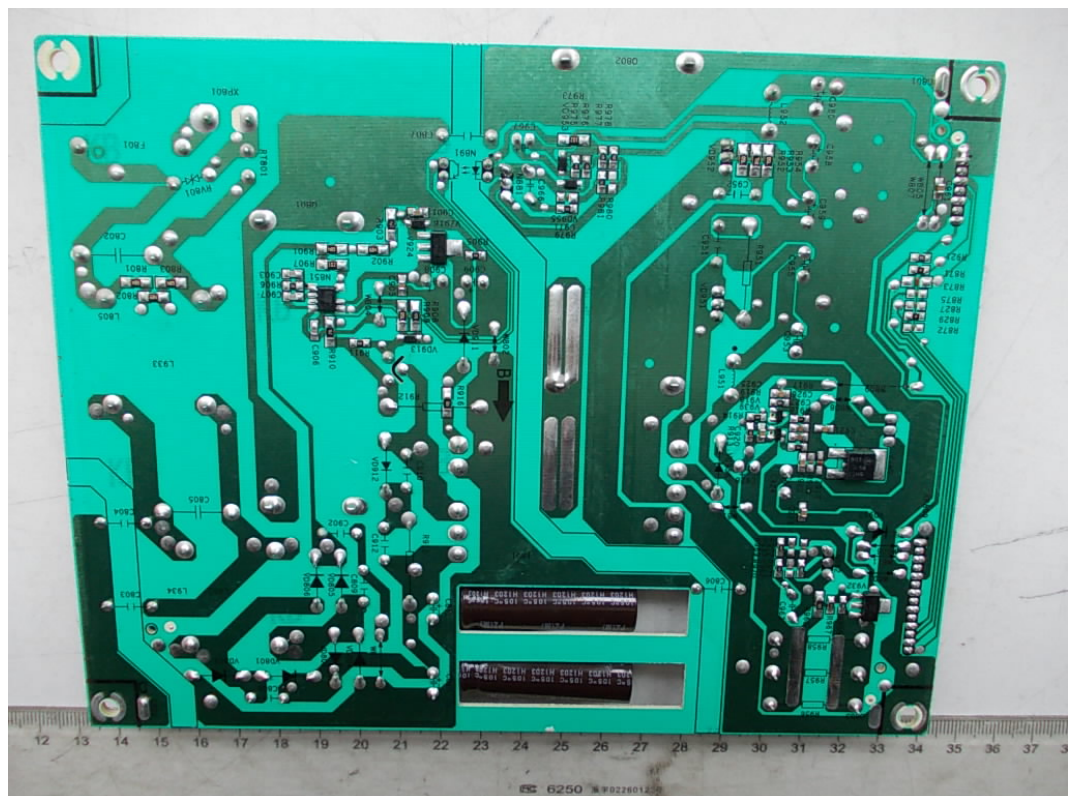


FIGURE 4
LED LCD TV (M/N: LHD32D77WUS)
MAIN BOARD (COMPONENT SIDE)

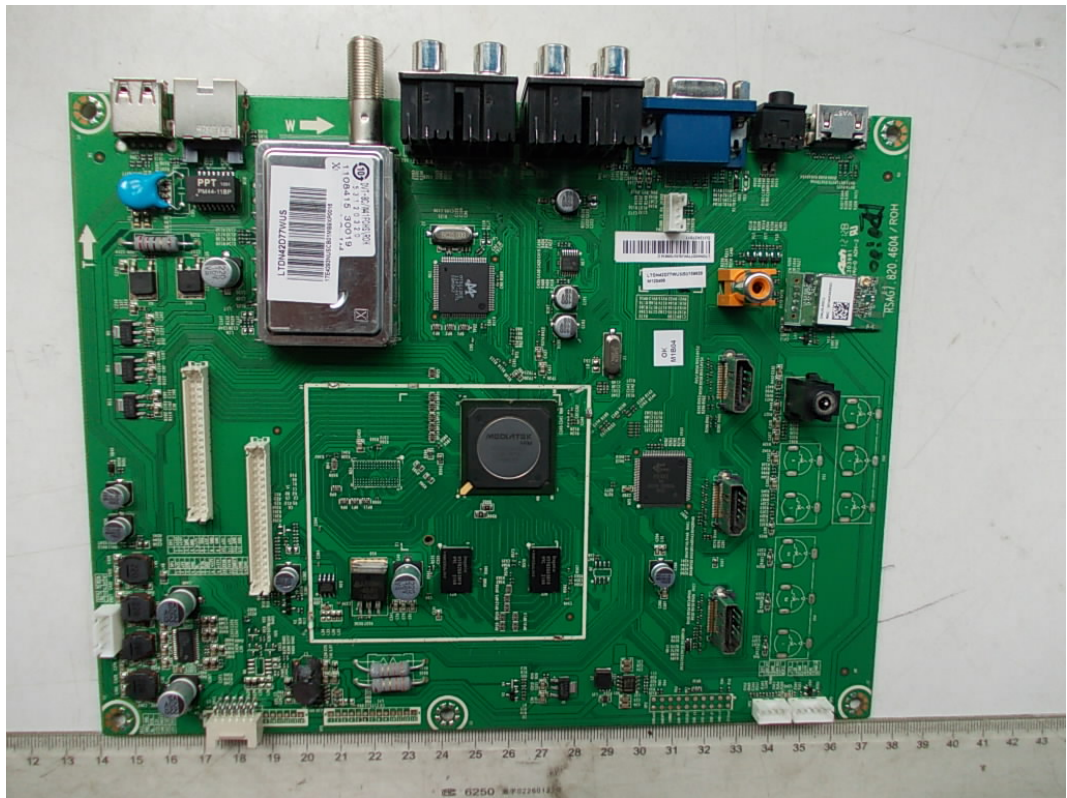


FIGURE 5
LED LCD TV (M/N: LHD32D77WUS)
MAIN BOARD (SOLDERED SIDE)

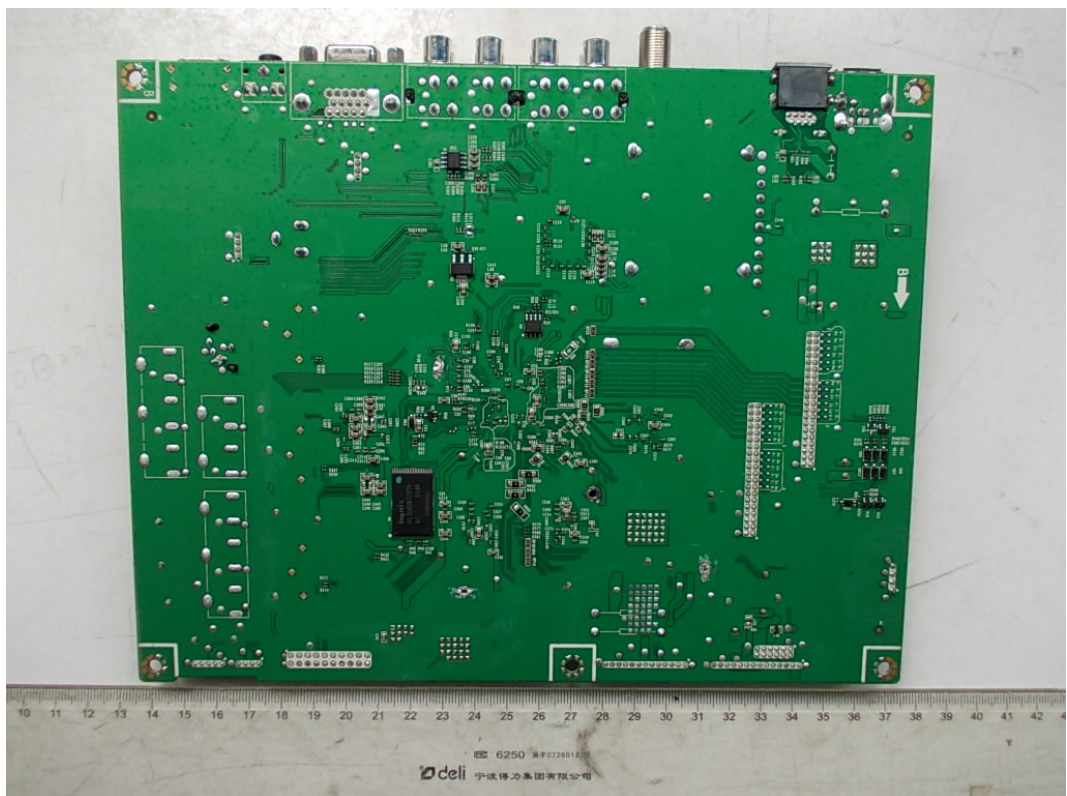


FIGURE 6
LED LCD TV (M/N: LHD32D77WUS)
RF BOARD

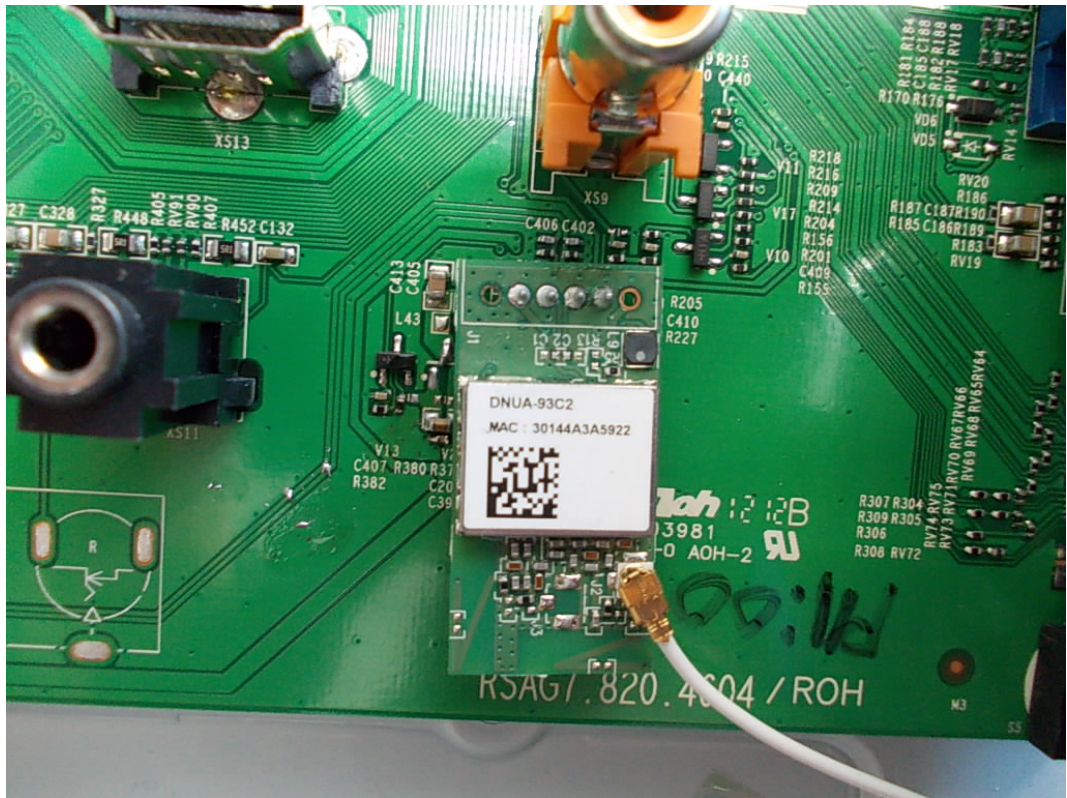


FIGURE 7
LED LCD TV (M/N: LHD32D77WUS)
TUNER ON MAIN BOARD



FIGURE 8
LED LCD TV (M/N: LHD32D77WUS)
CHIP & CRYSTAL #1 ON MAIN BOARD

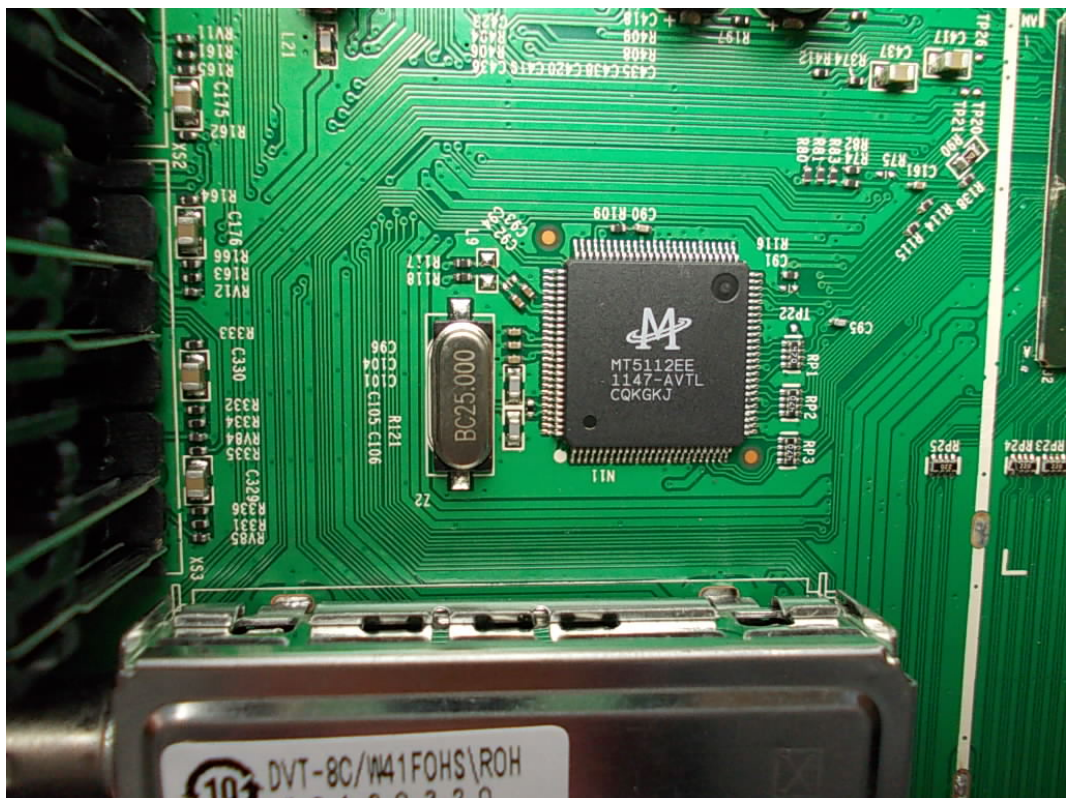


FIGURE 10
LED LCD TV (M/N: LHD32D77WUS)
KEY BOARD (COMPONENT SIDE)

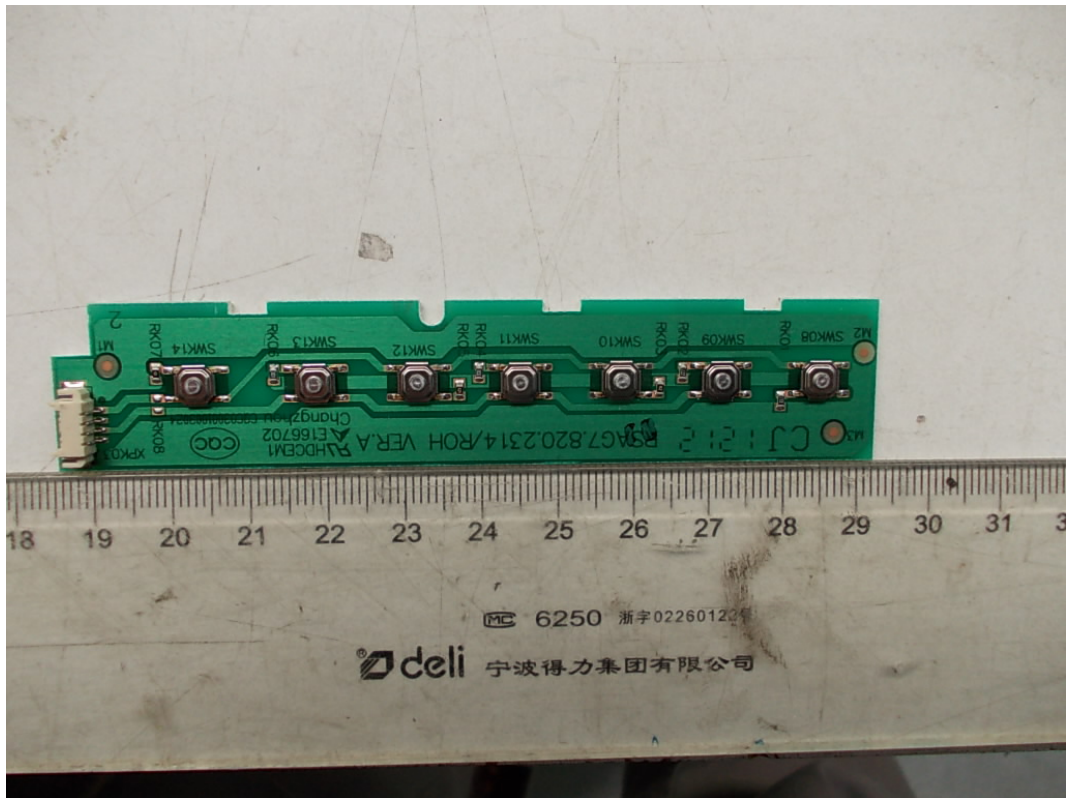


FIGURE 11
LED LCD TV (M/N: LHD32D77WUS)
KEY BOARD (SOLDERED SIDE)

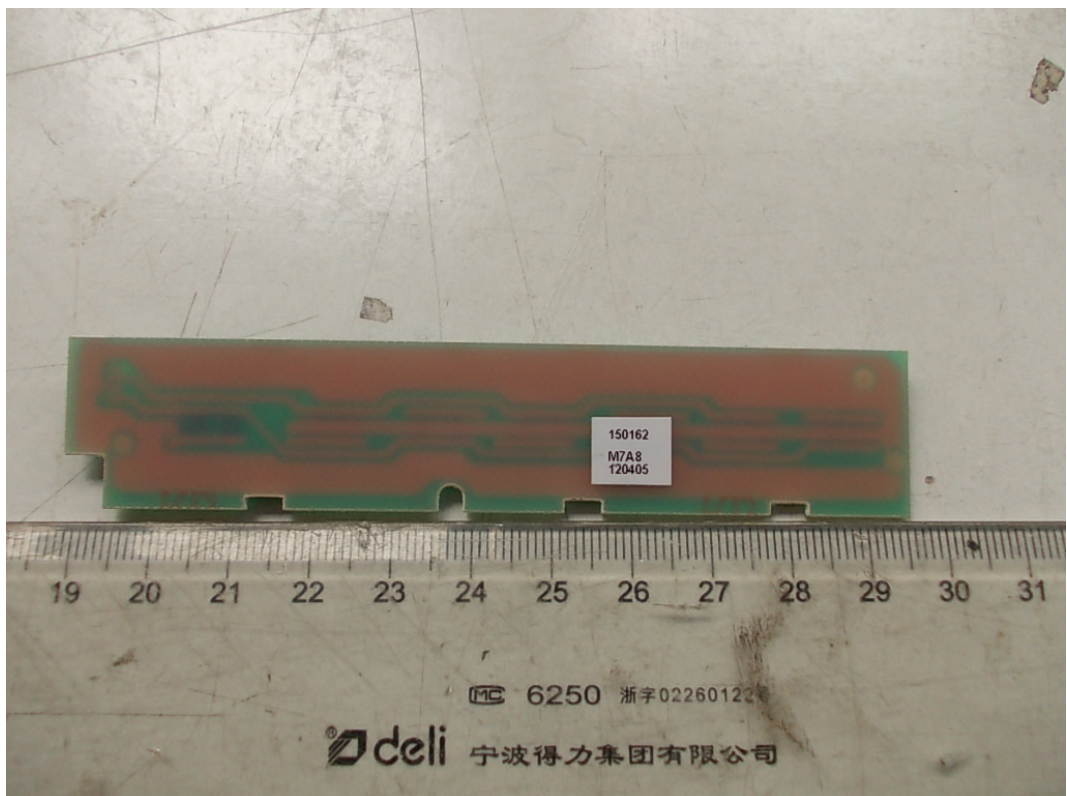


FIGURE 12
LED LCD TV (M/N: LHD32D77WUS)
IR BOARD (COMPONENT SIDE)

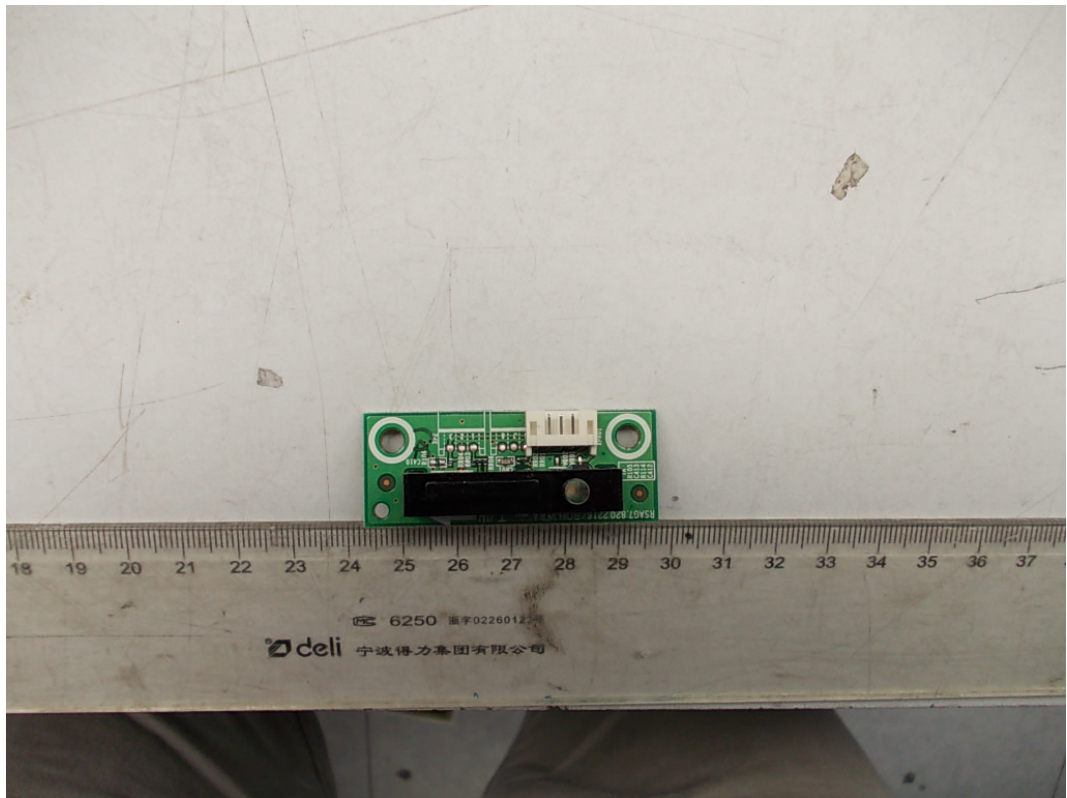


FIGURE 13
LED LCD TV (M/N: LHD32D77WUS)
IR BOARD (SOLDERED SIDE)

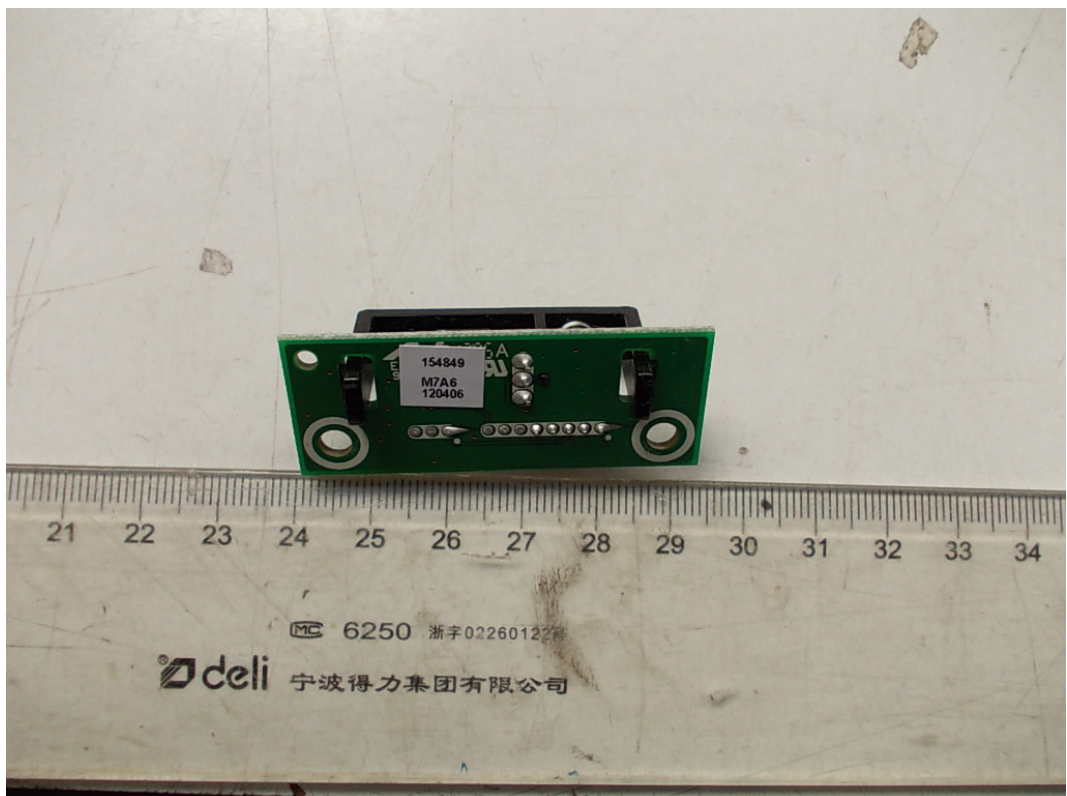


FIGURE 14
LED LCD TV (M/N: LHD32D77WUS)
LCD PANEL CONTROL BOARD (COMPONENT SIDE)

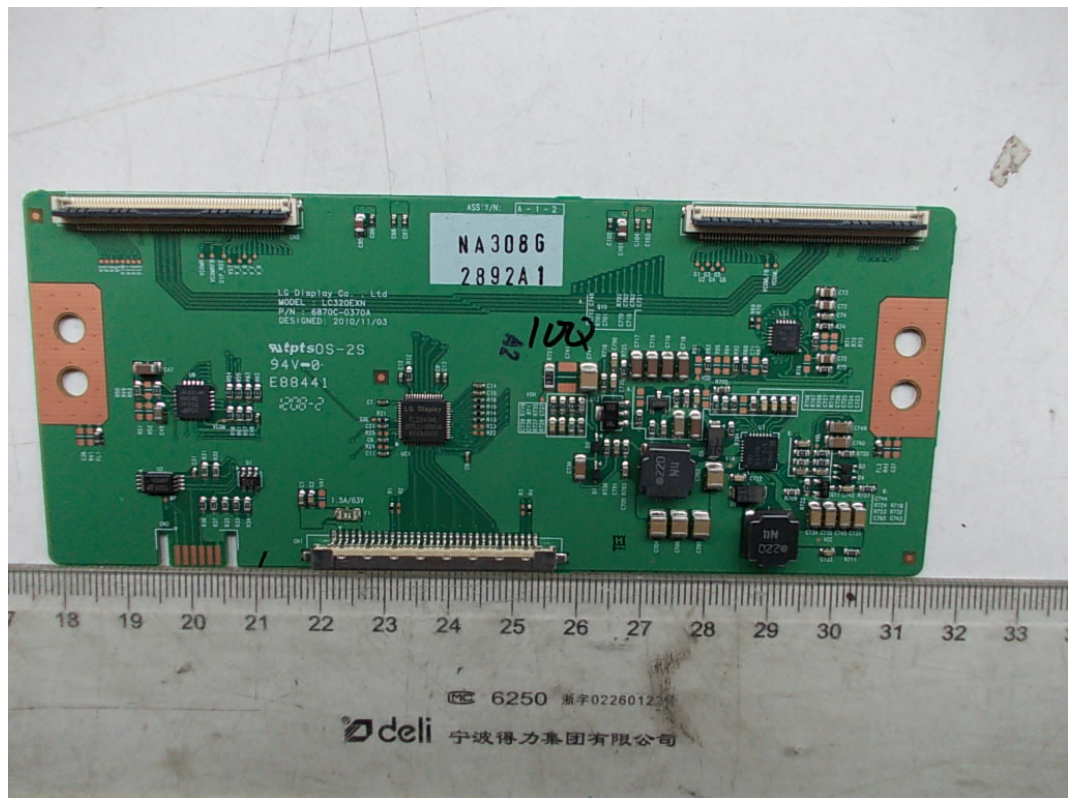


FIGURE 15
LED LCD TV (M/N: LHD32D77WUS)
LCD PANEL CONTROL BOARD (SOLDERED SIDE)

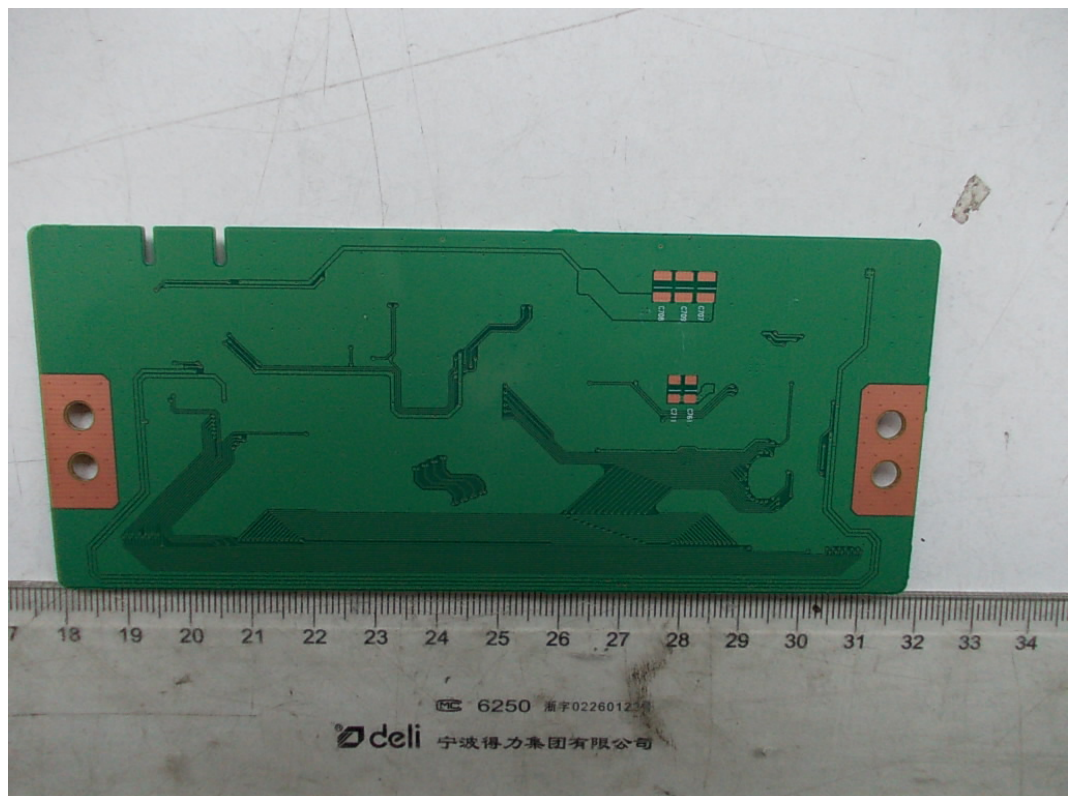


FIGURE 16
LED LCD TV (M/N: LHD32D77WUS)
HIGH VOLTAGE SIGNAL BOARD (COMPONENT SIDE)

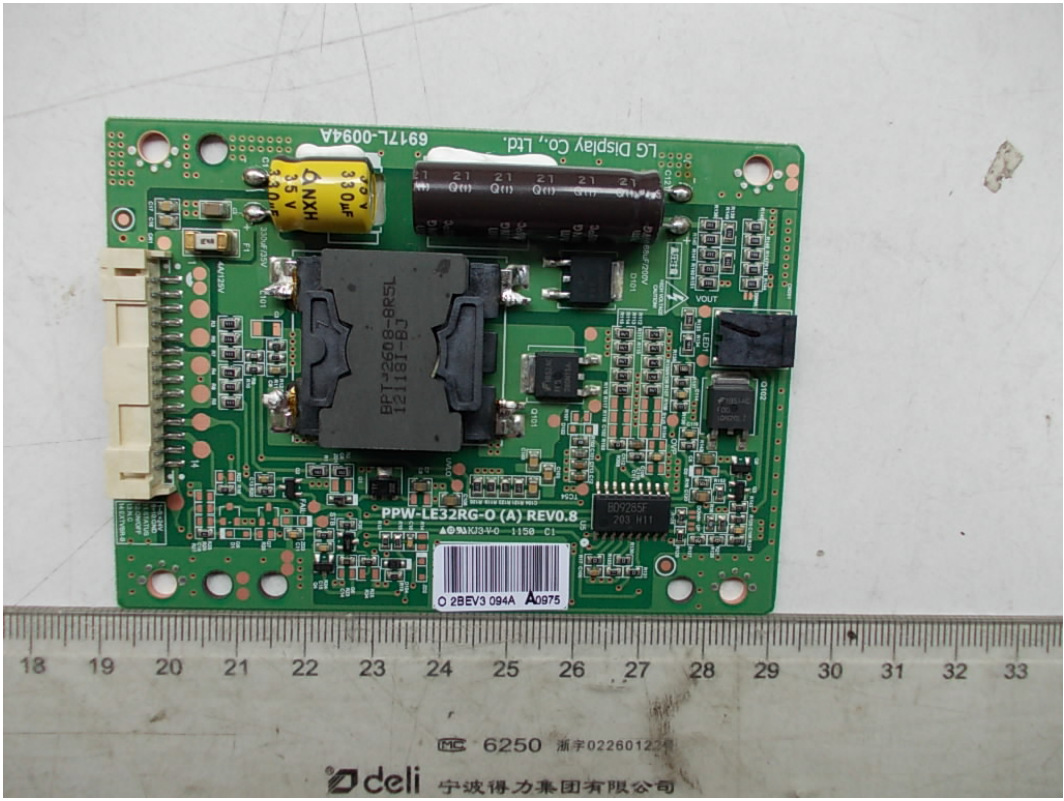


FIGURE 17
LED LCD TV (M/N: LHD32D77WUS)
HIGH VOLTAGE SIGNAL BOARD (SOLDERED SIDE)

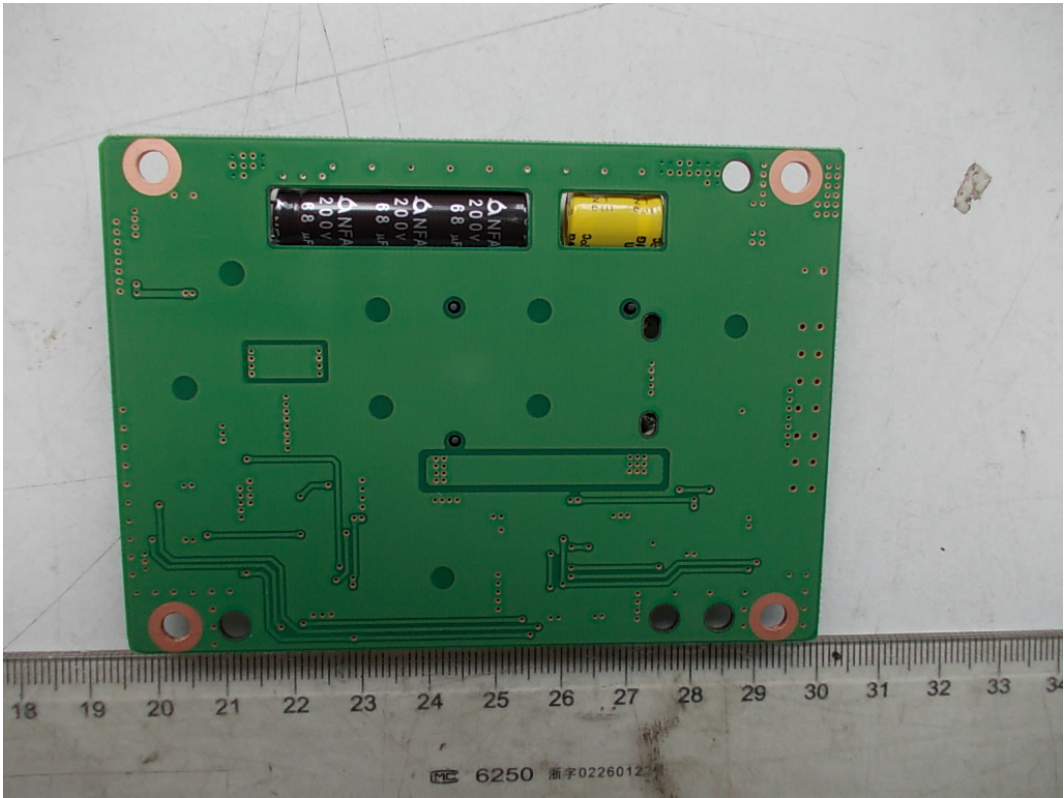


FIGURE 18
LED LCD TV (M/N: LHD32D77WUS)
DEBUG

