

FIGURE 1
LCD TV (M/N: LHD32K26US)
COVER REMOVED



FIGURE 2
LCD TV (M/N: LHD32K26US)
LABEL ON LCD PANEL



FIGURE 3
LCD TV (M/N: LHD32K26US)
POWER BOARD (COMPONENT SIDE)



FIGURE 4
LCD TV (M/N: LHD32K26US)
POWER BOARD (SOLDERED SIDE)

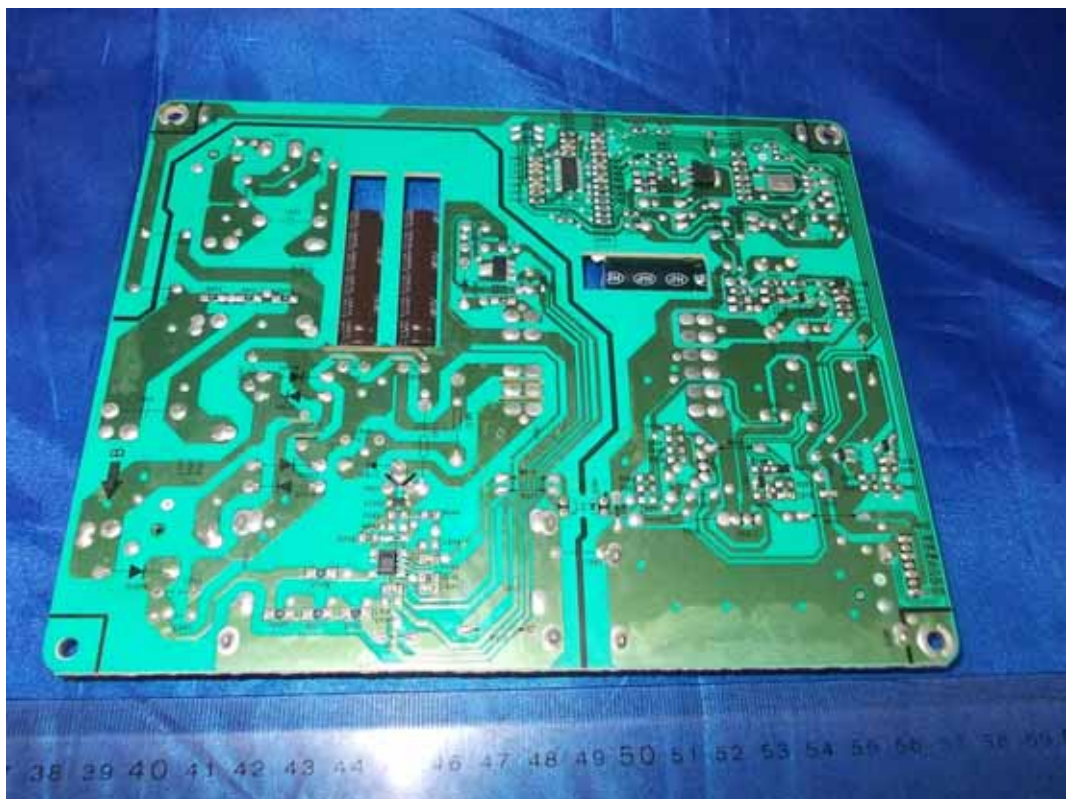


FIGURE 5
LCD TV (M/N: LHD32K26US)
MAIN BOARD (COMPONENT SIDE)



FIGURE 6
LCD TV (M/N: LHD32K26US)
MAIN BOARD (SOLDERED SIDE)

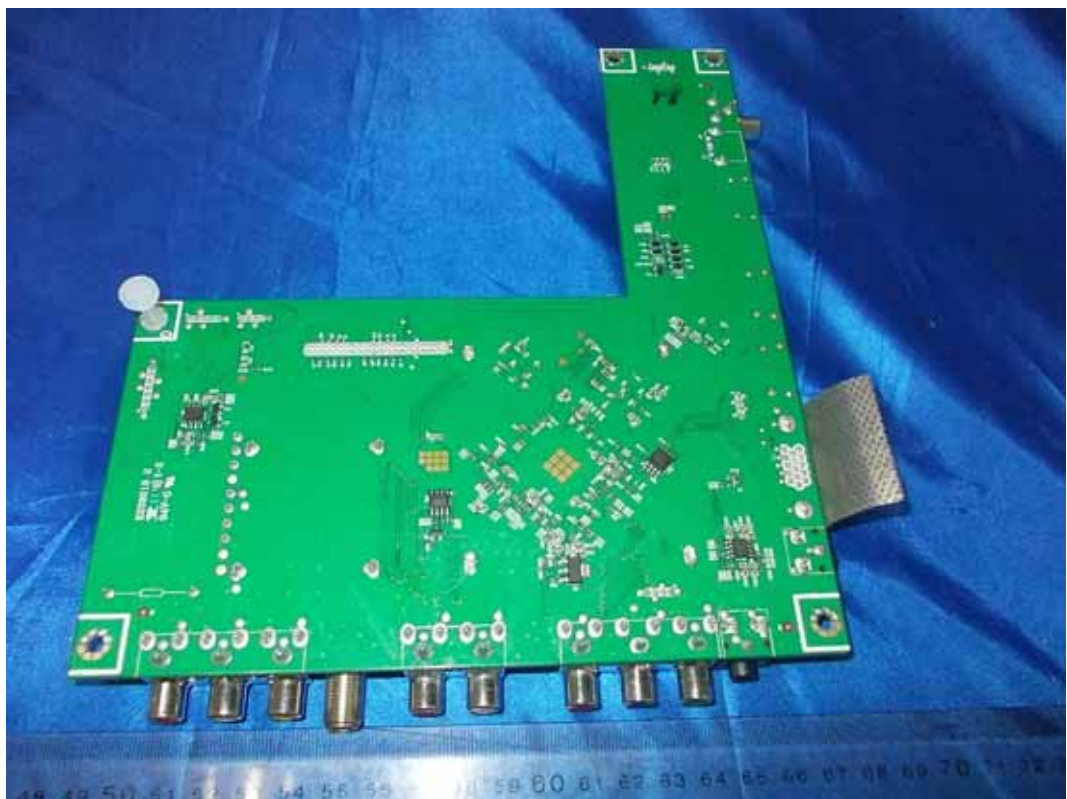


FIGURE 7
LCD TV (M/N: LHD32K26US)
CRYSTAL AND CHIP ON MAIN BOARD



FIGURE 8
LCD TV (M/N: LHD32K26US)
TUNER



FIGURE 9
LCD TV (M/N: LHD32K26US)
IR BOARD (COMPONENT SIDE)



FIGURE 10
LCD TV (M/N: LHD32K26US)
IR BOARD (SOLDERED SIDE)



FIGURE 11
LCD TV (M/N: LHD32K26US)
KEY BOARD (COMPONENT SIDE)

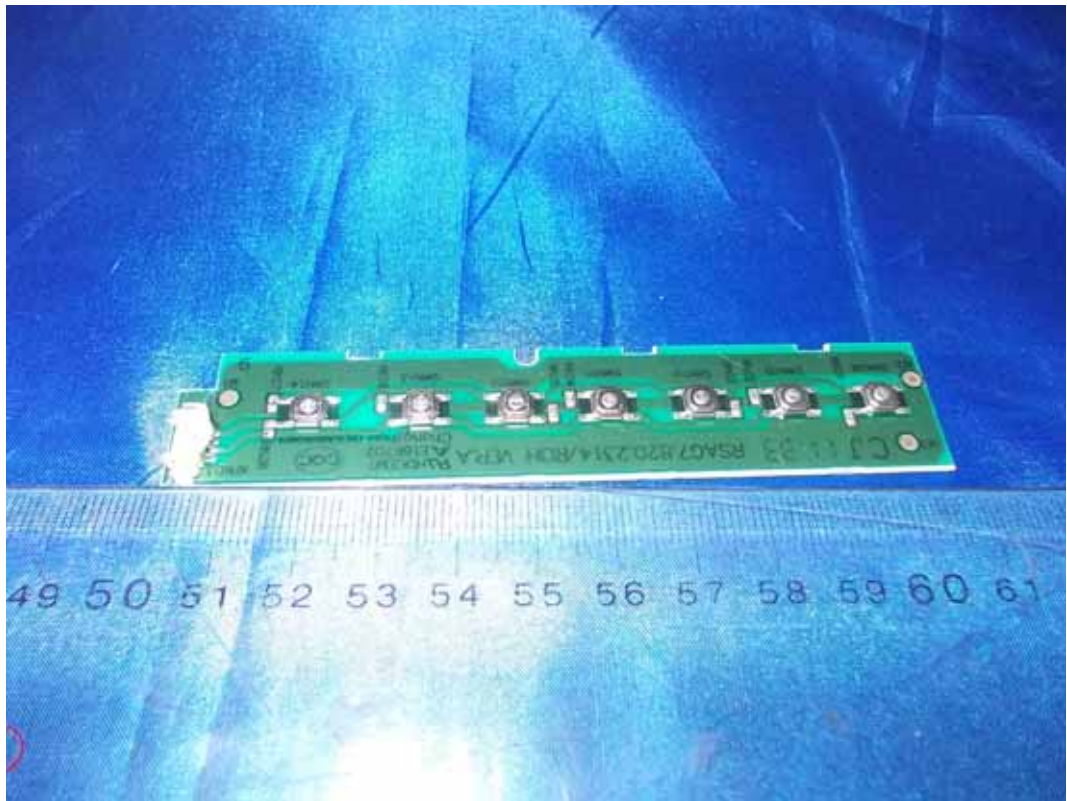


FIGURE 12
LCD TV (M/N: LHD32K26US)
KEY BOARD (SOLDERED SIDE)

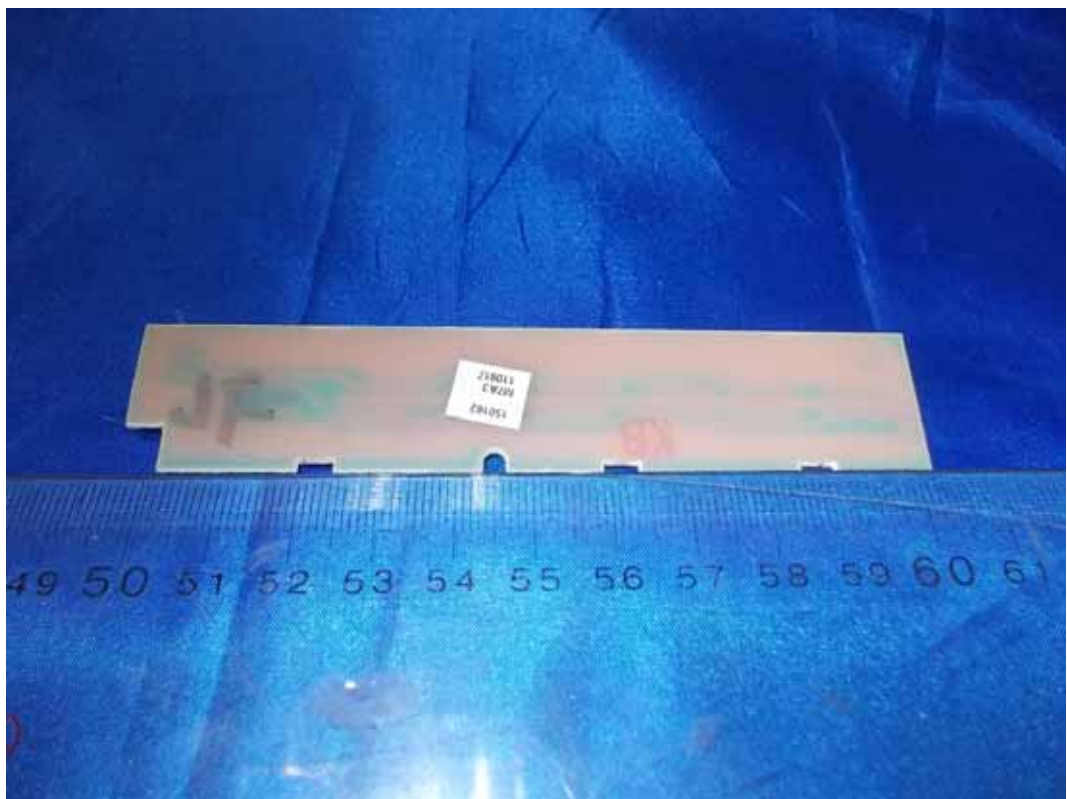


FIGURE 13
LCD TV (M/N: LHD32K26US)
LCD PANEL CONTROL BOARD (COMPONENT SIDE)

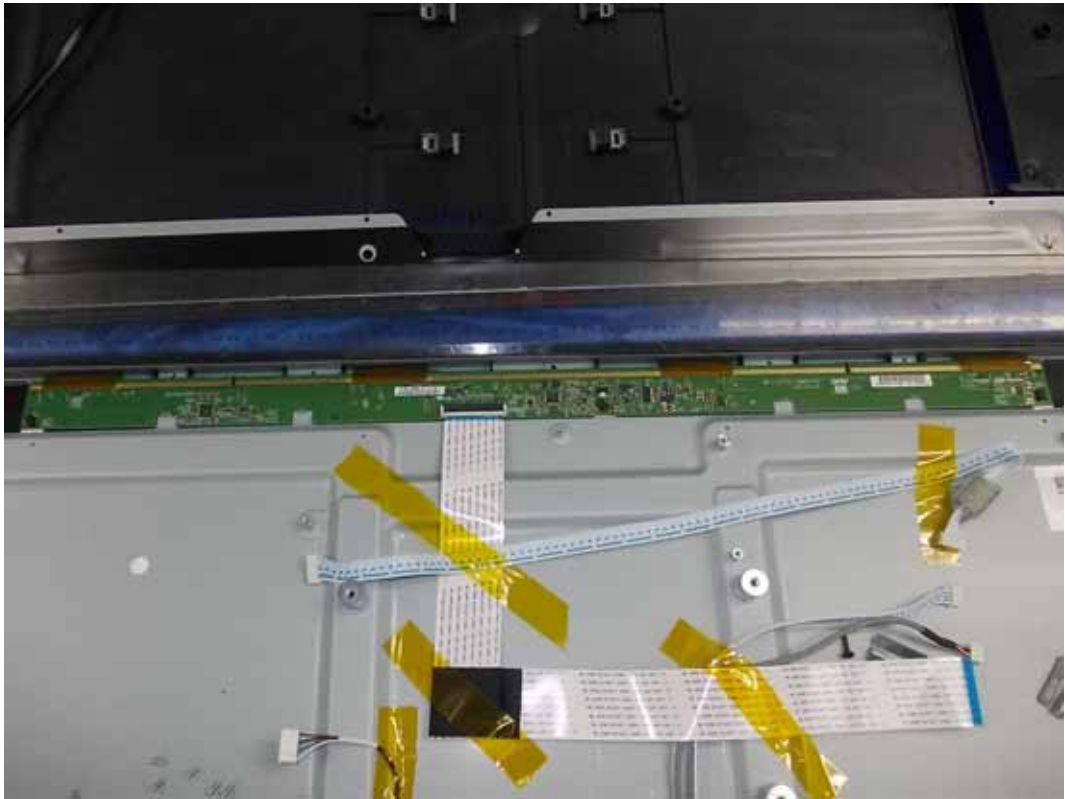


FIGURE 14
LCD TV (M/N: LHD32K26US)
LCD PANEL CONTROL BOARD (SOLDERED SIDE)



FIGURE 15
LCD TV (M/N: LHD32K26US)
DEBUG #1



FIGURE 16
LCD TV (M/N: LHD32K26US)
DEBUG #2



FIGURE 17
LCD TV (M/N: LHD32K26US)
DEBUG #3

