

FIGURE 1
LCD TV (M/N: LHD32V78HUS)
COVER REMOVED



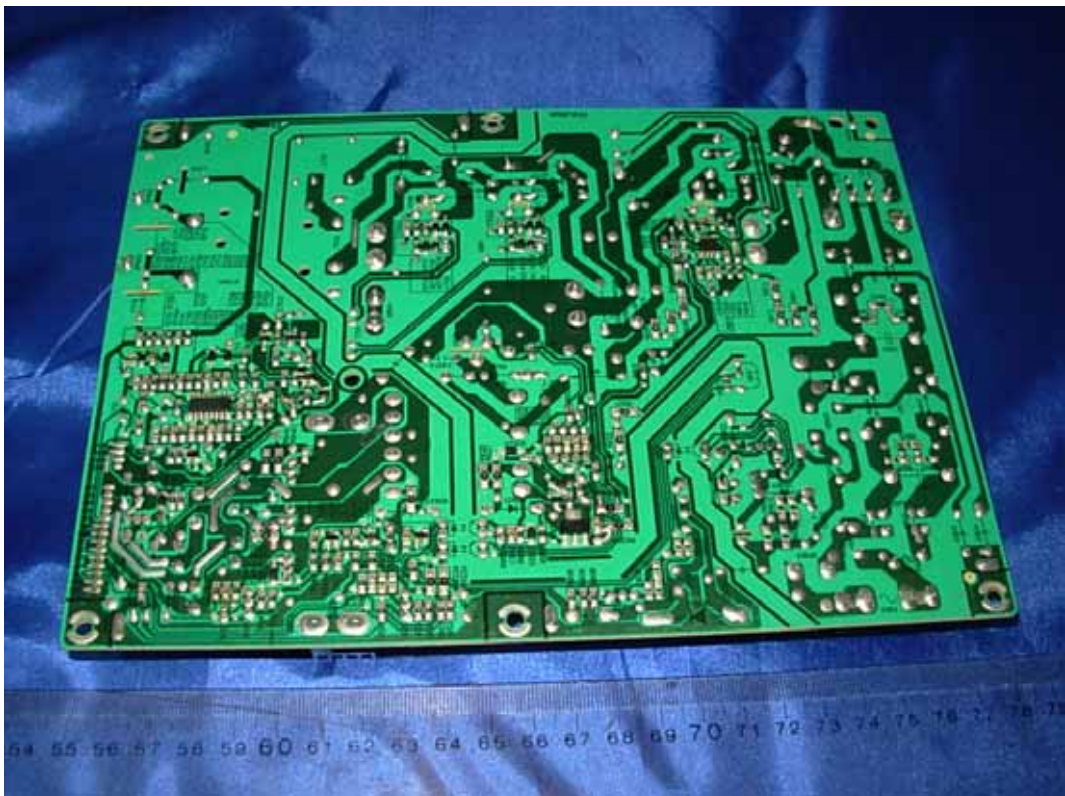
FIGURE 2
LCD TV (M/N: LHD32V78HUS)
LABEL ON PANEL



FIGURE 3
LCD TV (M/N: LHD32V78HUS)
POWER BOARD (COMPONENT SIDE)



FIGURE 4
LCD TV (M/N: LHD32V78HUS)
POWER BOARD (SOLDERED SIDE)



*FIGURE 5
LCD TV (M/N: LHD32V78HUS)
MAIN BOARD (COMPONENT SIDE)*



*FIGURE 6
LCD TV (M/N: LHD32V78HUS)
MAIN BOARD (SOLDERED SIDE)*



FIGURE 7
LCD TV (M/N: LHD32V78HUS)
TUNER ON MAIN BOARD



FIGURE 8
LCD TV (M/N: LHD32V78HUS)
CHIP & CRYSTAL ON MAIN BOARD



FIGURE 9
LCD TV (M/N: LHD32V78HUS)
HIGH VOLTAGE SIGNAL BOARD (COMPONENT SIDE)



FIGURE 10
LCD TV (M/N: LHD32V78HUS)
HIGH VOLTAGE SIGNAL BOARD (SOLDERED SIDE)

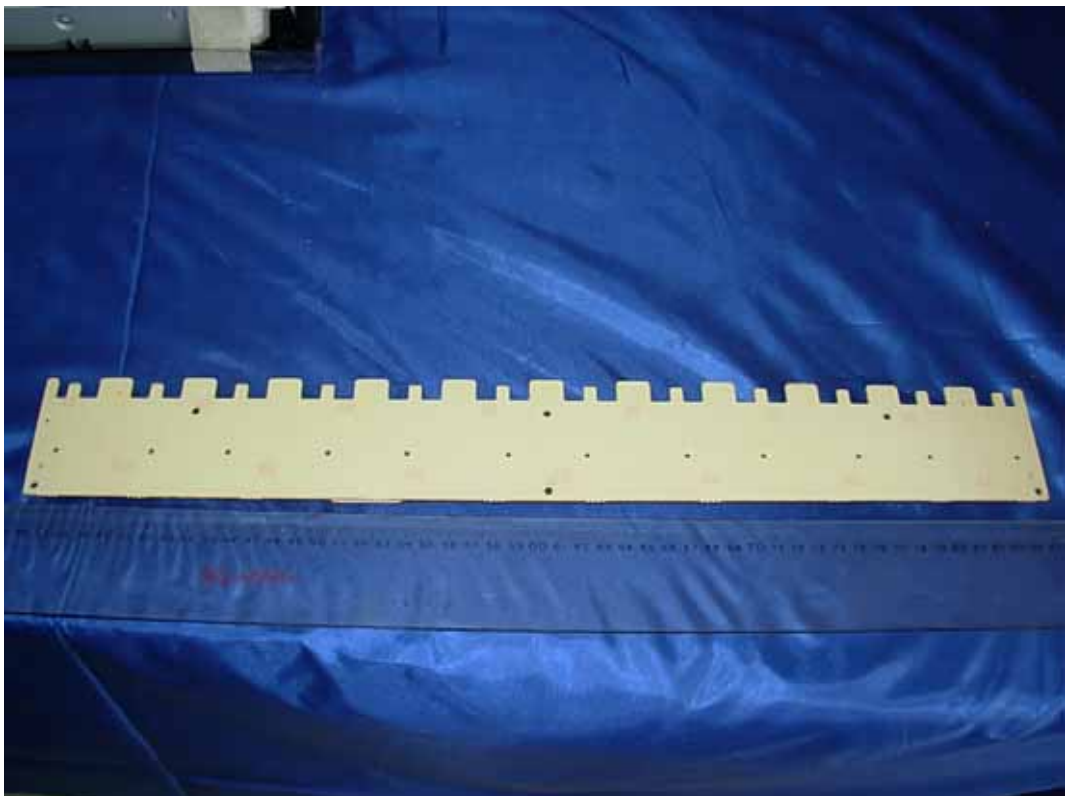


FIGURE 11
LCD TV (M/N: LHD32V78HUS)
KEY BOARD (COMPONENT SIDE)

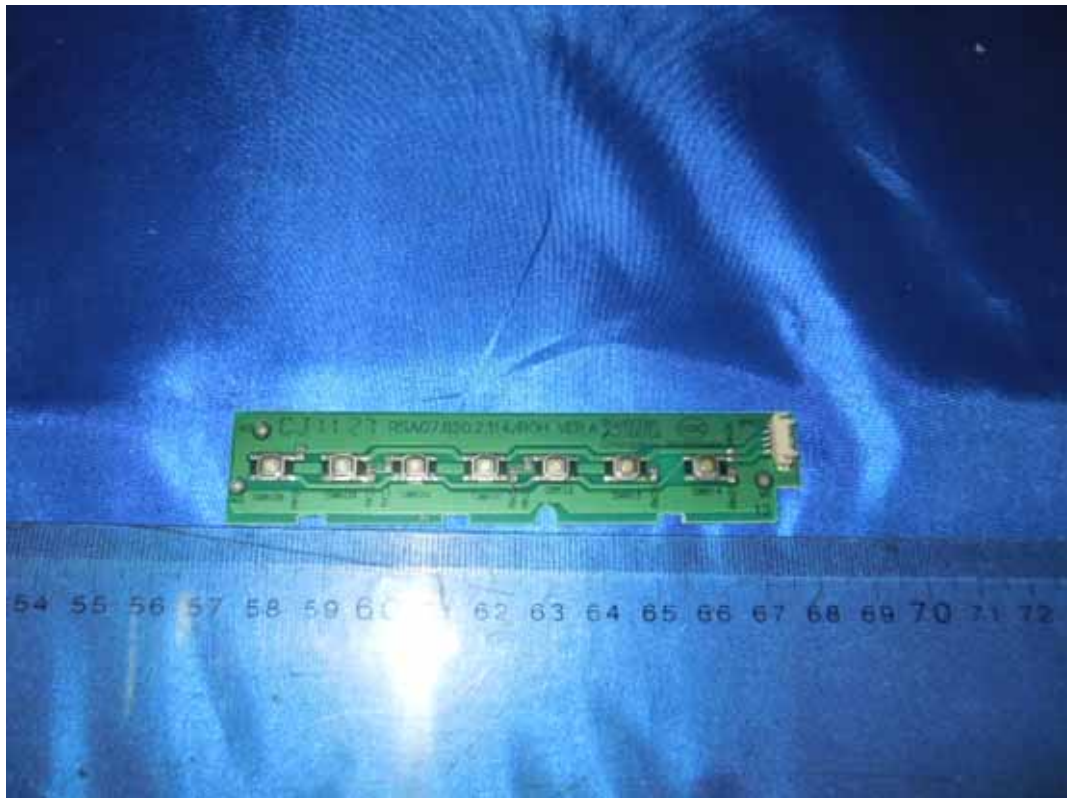


FIGURE 12
LCD TV (M/N: LHD32V78HUS)
KEY BOARD (SOLDERED SIDE)



FIGURE 13
LCD TV (M/N: LHD32V78HUS)
IR BOARD (COMPONENT SIDE)

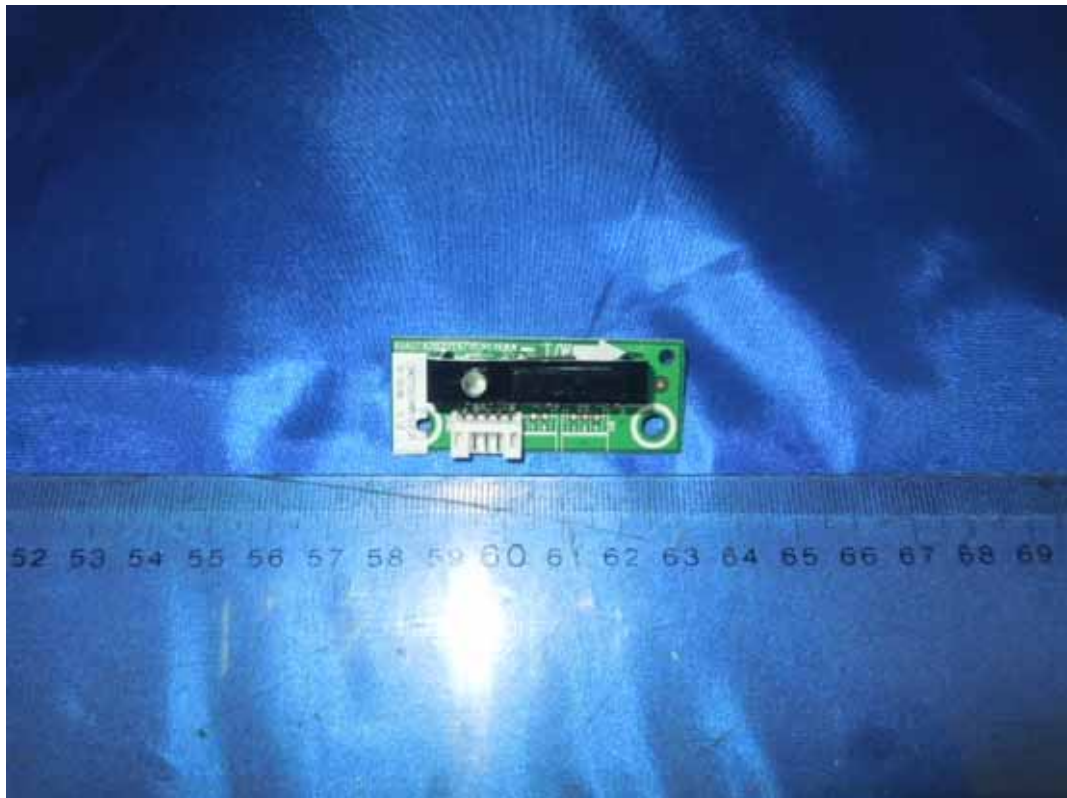


FIGURE 14
LCD TV (M/N: LHD32V78HUS)
IR BOARD (SOLDERED SIDE)

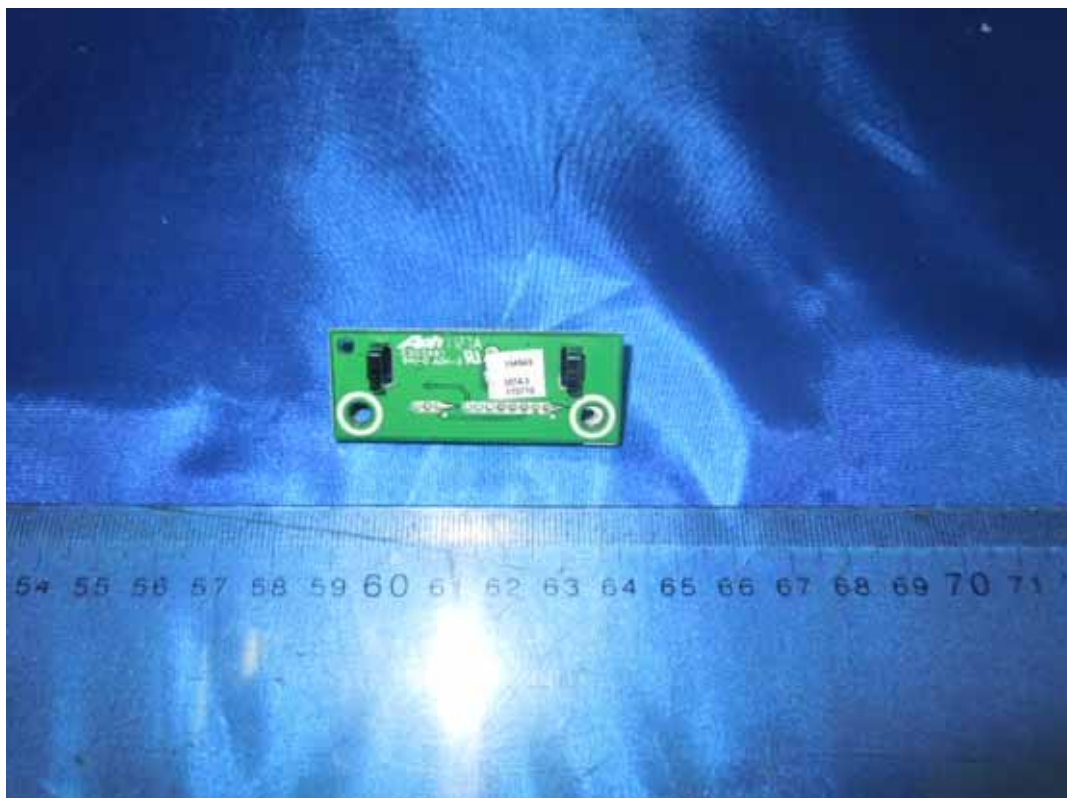


FIGURE 15
LCD TV (M/N: LHD32V78HUS)
CONTROL BOARD (COMPONENT SIDE)

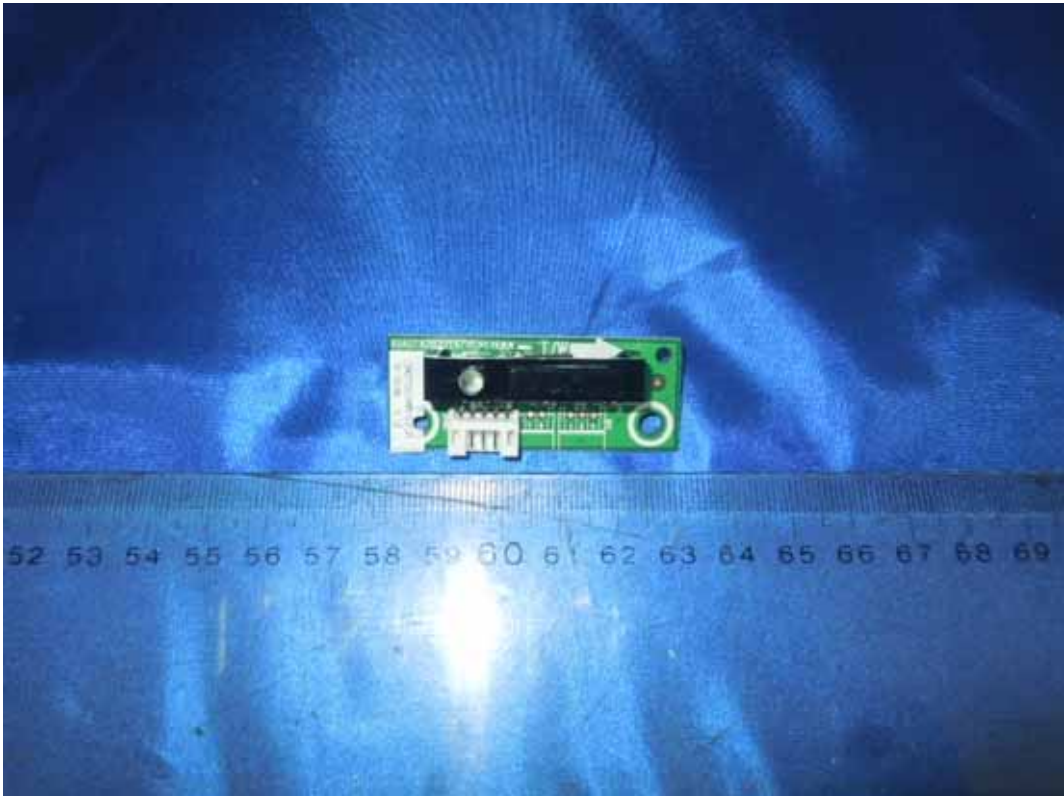


FIGURE 16
LCD TV (M/N: LHD32V78HUS)
CONTROL BOARD (SOLDERED SIDE)

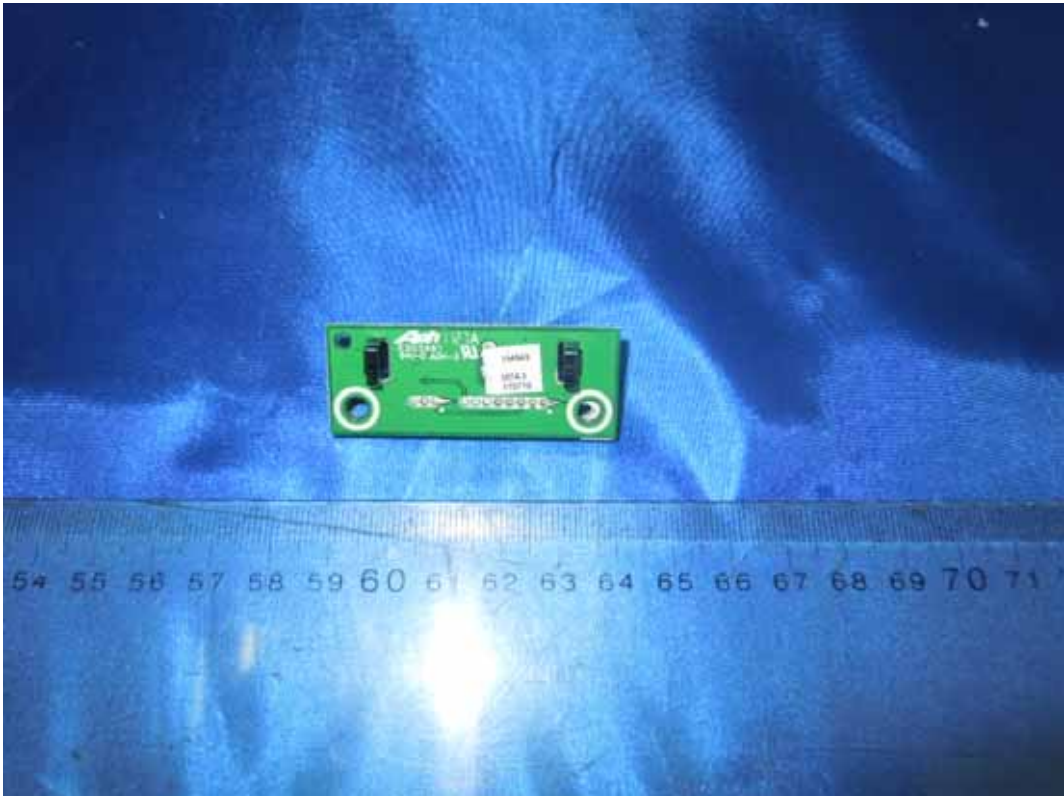


FIGURE 17
LCD TV (M/N: LHD32V78HUS)
DEBUG 1



FIGURE 18
LCD TV (M/N: LHD32V78HUS)
DEBUG 2

