

FIGURE 1
LCD TV (M/N: LHD32V77AUS)
COVER REMOVED



FIGURE 2
LCD TV (M/N: LHD32V77AUS)
MAIN BOARD (COMPONENT SIDE)



FIGURE 3
LCD TV (M/N: LHD32V77AUS)
MAIN BOARD (SOLDERED SIDE)



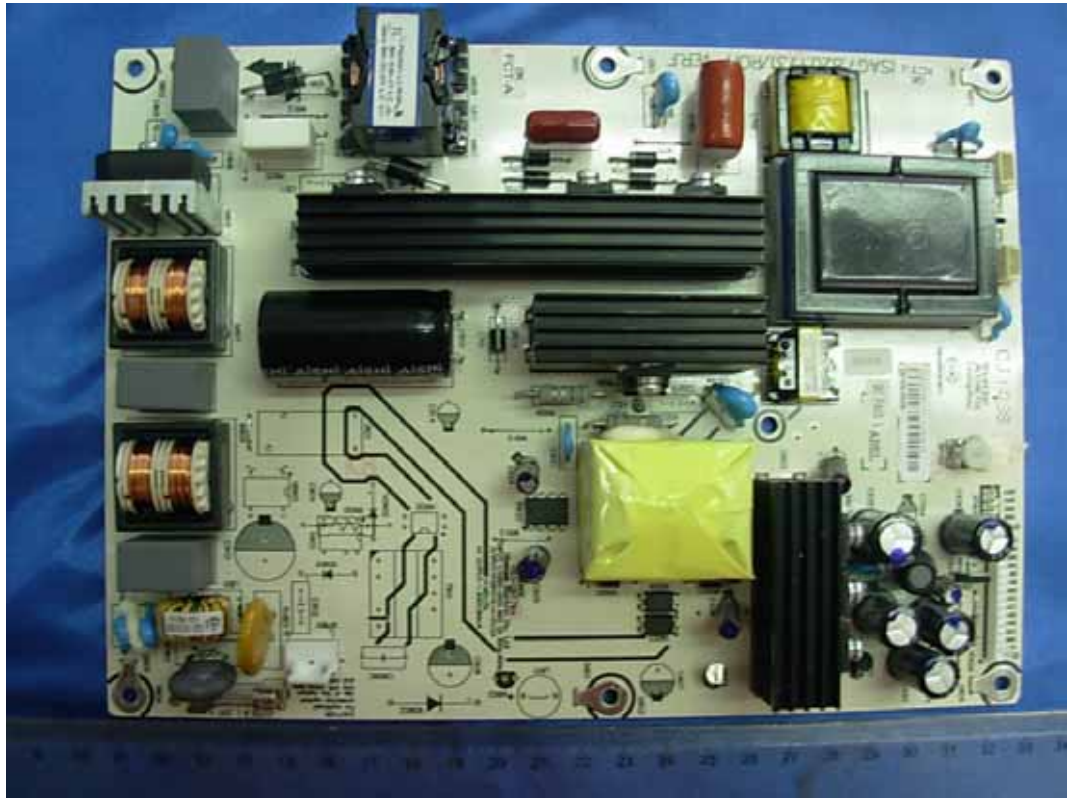
FIGURE 4
LCD TV (M/N: LHD32V77AUS)
CHIP & CRYSTAL ON MAIN BOARD



FIGURE 5
LCD TV (M/N: LHD32V77AUS)
TUNER



*FIGURE 6
LCD TV (M/N: LHD32V77AUS)
POWER BOARD (COMPONENT SIDE)*



*FIGURE 7
LCD TV (M/N: LHD32V77AUS)
POWER BOARD (SOLDERED SIDE)*

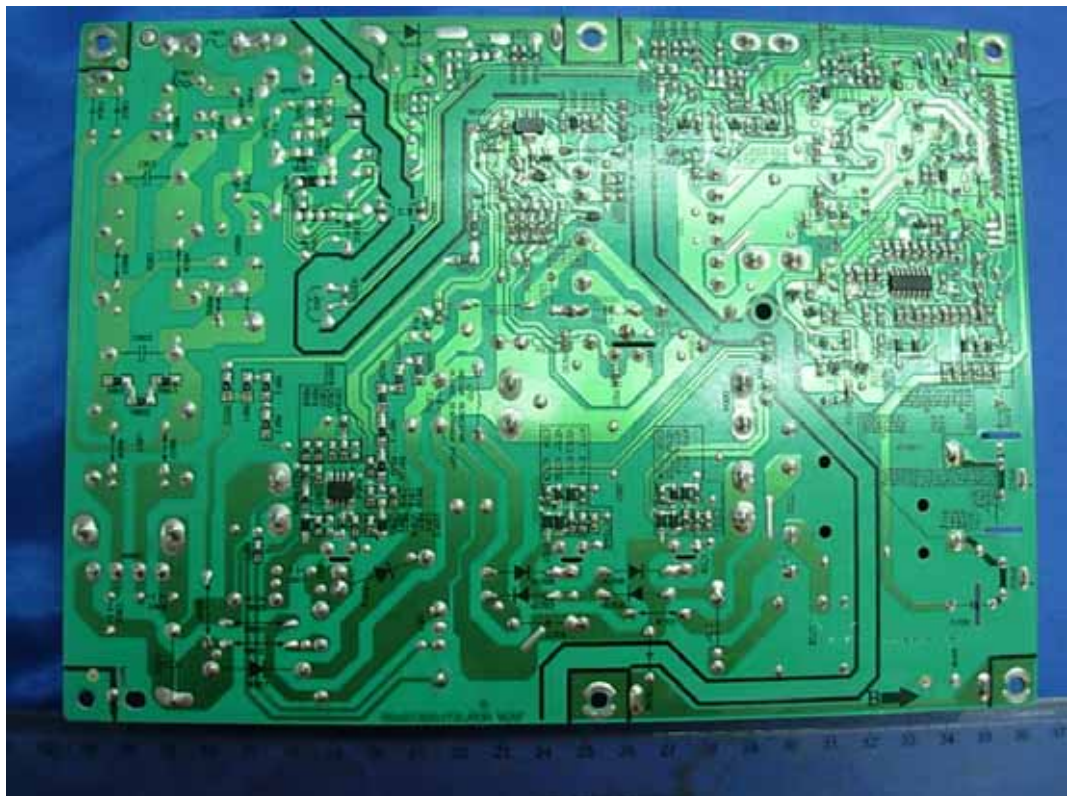


FIGURE 8
LCD TV (M/N: LHD32V77AUS)
LCD PANEL BOARD (COMPONENT SIDE)

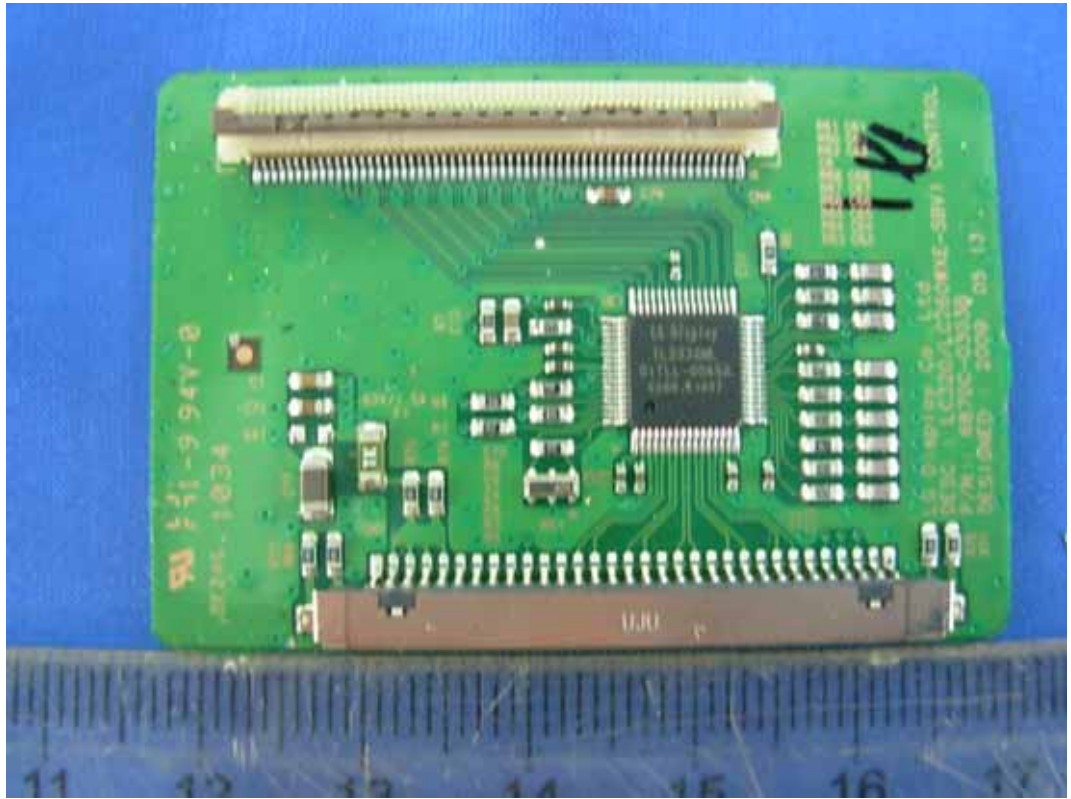


FIGURE 9
LCD TV (M/N: LHD32V77AUS)
LCD PANEL BOARD (SOLDERED SIDE)

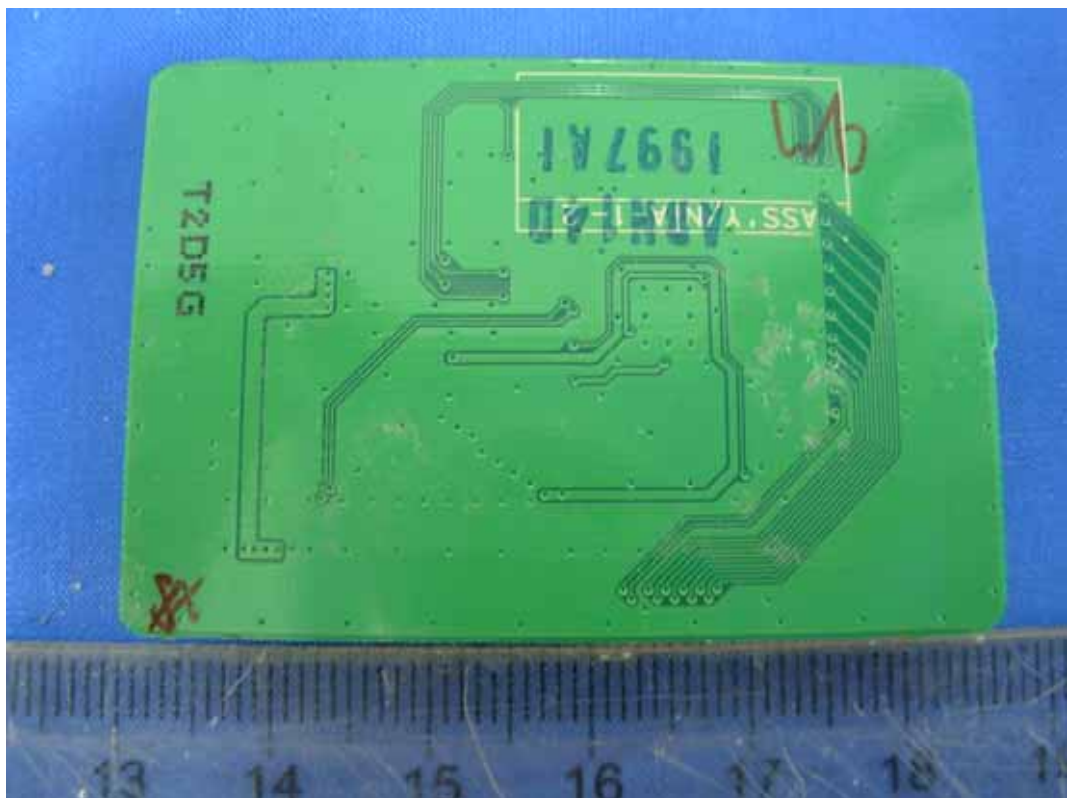


FIGURE 10
LCD TV (M/N: LHD32V77AUS)
KEY BOARD (COMPONENT SIDE)

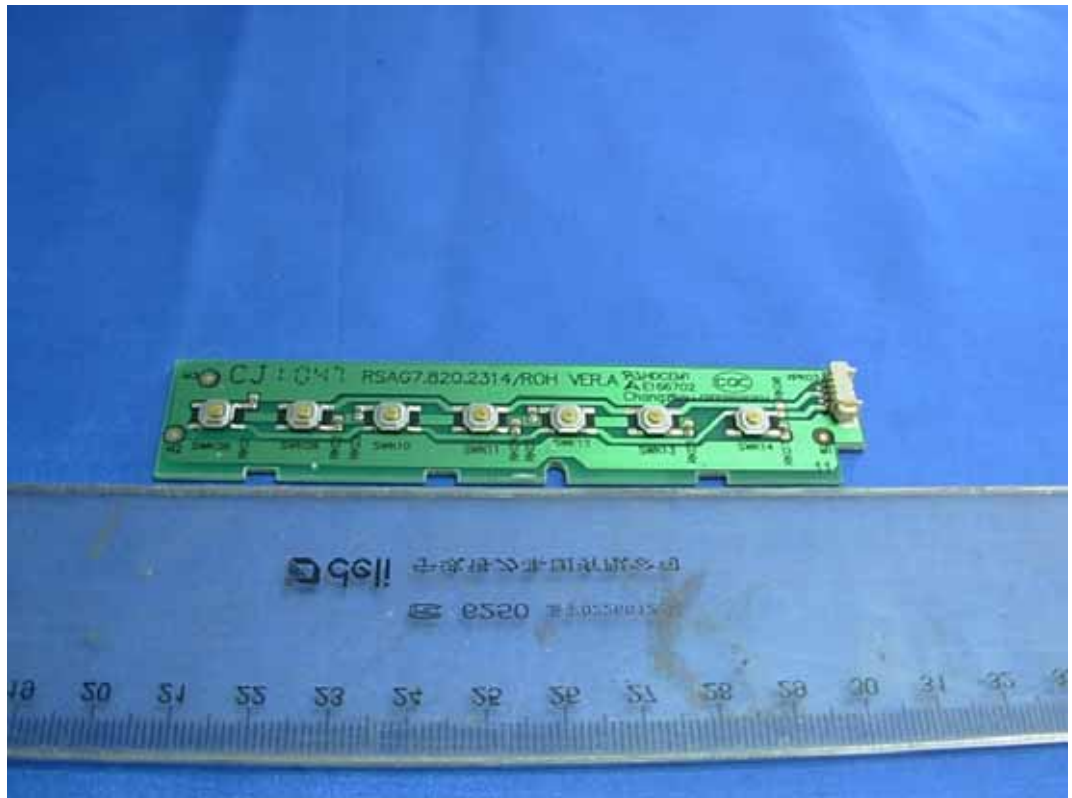


FIGURE 11
LCD TV (M/N: LHD32V77AUS)
KEY BOARD (SOLDERED SIDE)

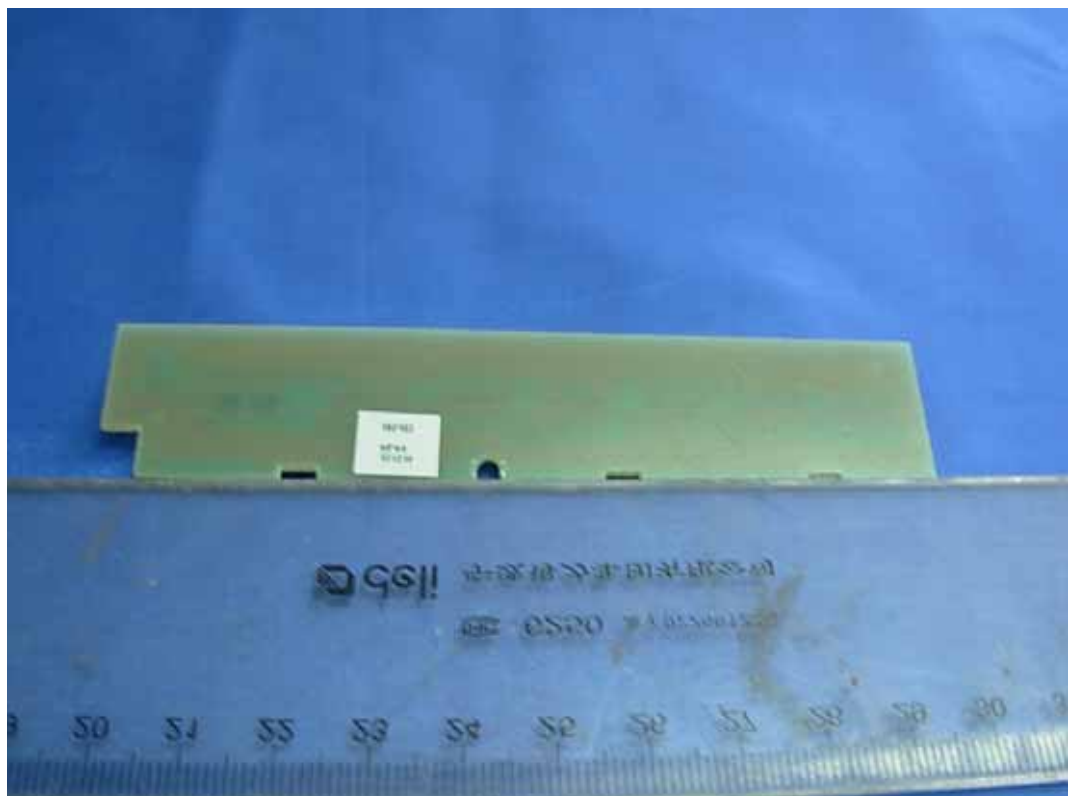


FIGURE 12
LCD TV (M/N: LHD32V77AUS)
IR BOARD (COMPONENT SIDE)

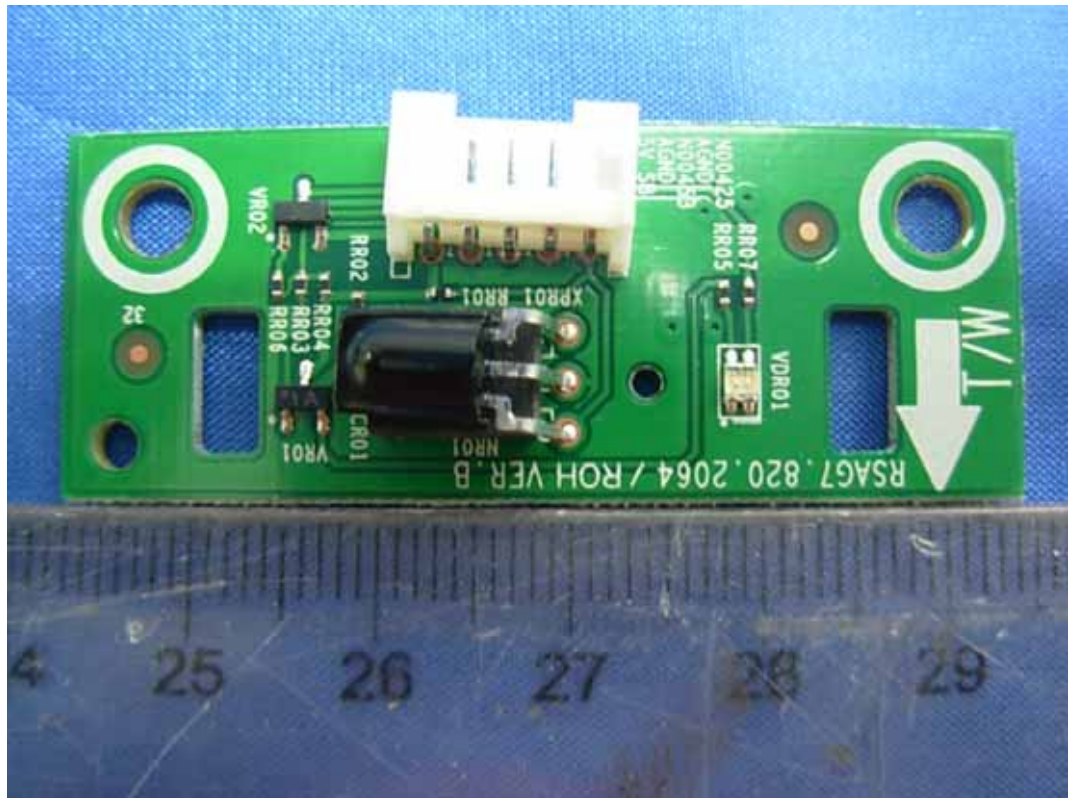


FIGURE 13
LCD TV (M/N: LHD32V77AUS)
IR BOARD (SOLDERED SIDE)

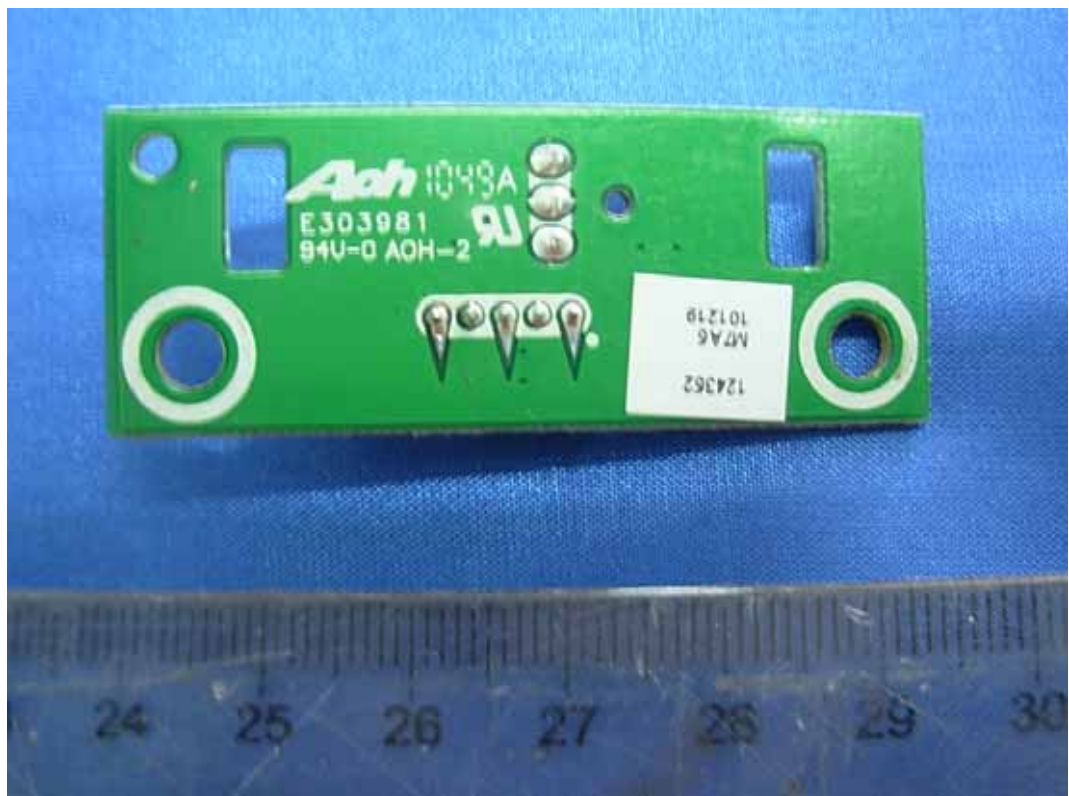


FIGURE 14
LCD TV (M/N: LHD32V77AUS)
DEBUG #1



FIGURE 15
LCD TV (M/N: LHD32V77AUS)
DEBUG #2



FIGURE 16
LCD TV (M/N: LHD32V77AUS)
DEBUG #3

