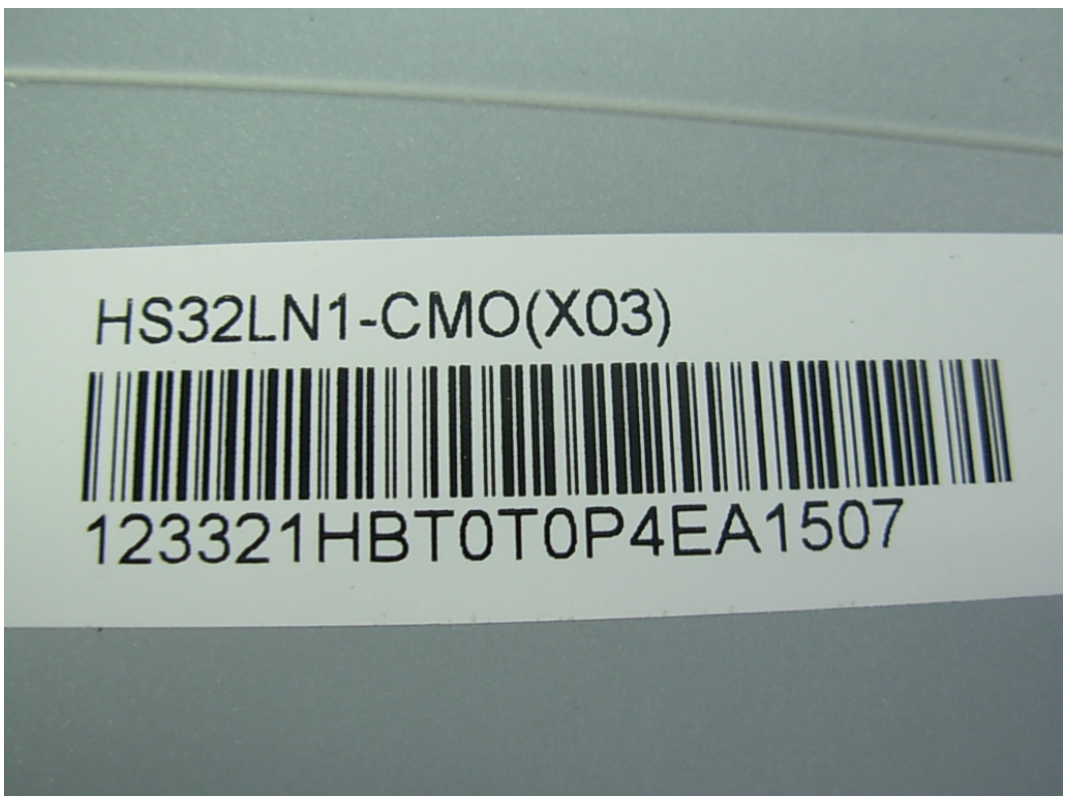


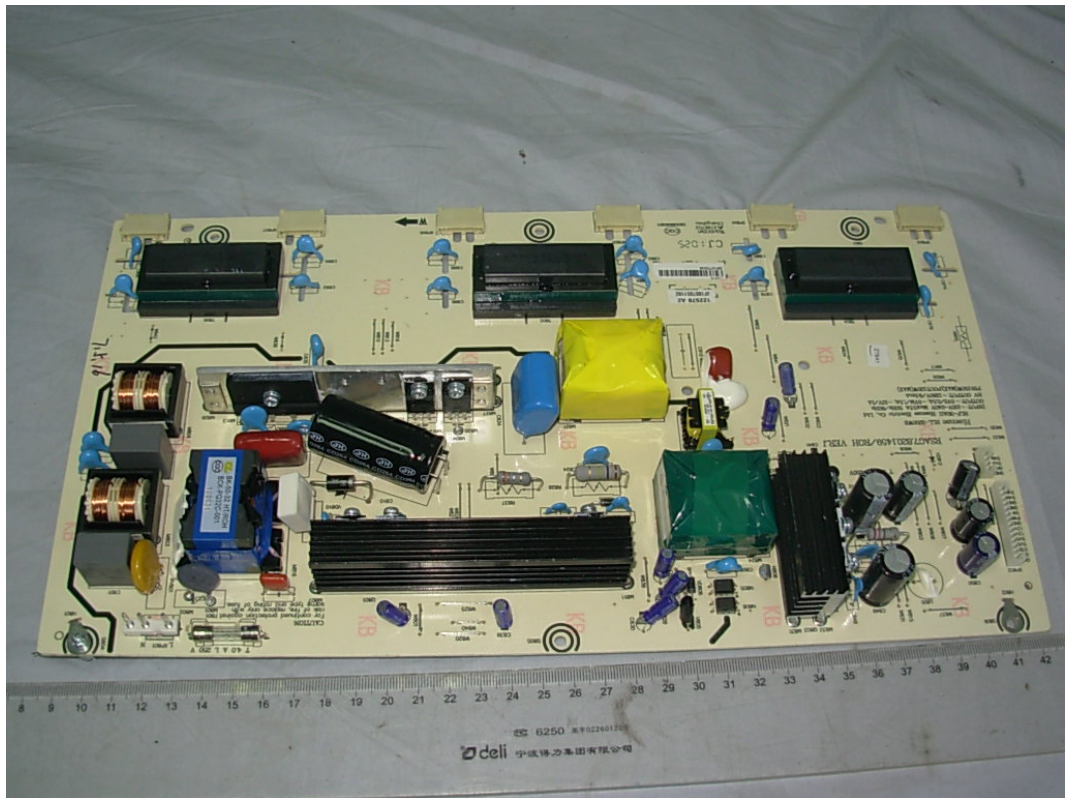
*FIGURE 1*  
*LCD TV (M/N: LHDN32V68HUS)*  
*COVER REMOVED*



*FIGURE 2*  
*LCD TV (M/N: LHDN32V68HUS)*  
*LABEL ON PANEL*



*FIGURE 3*  
*LCD TV (M/N: LHDN32V68HUS)*  
*POWER BOARD (COMPONENT SIDE)*



*FIGURE 4*  
*LCD TV (M/N: LHDN32V68HUS)*  
*POWER BOARD (SOLDERED SIDE)*

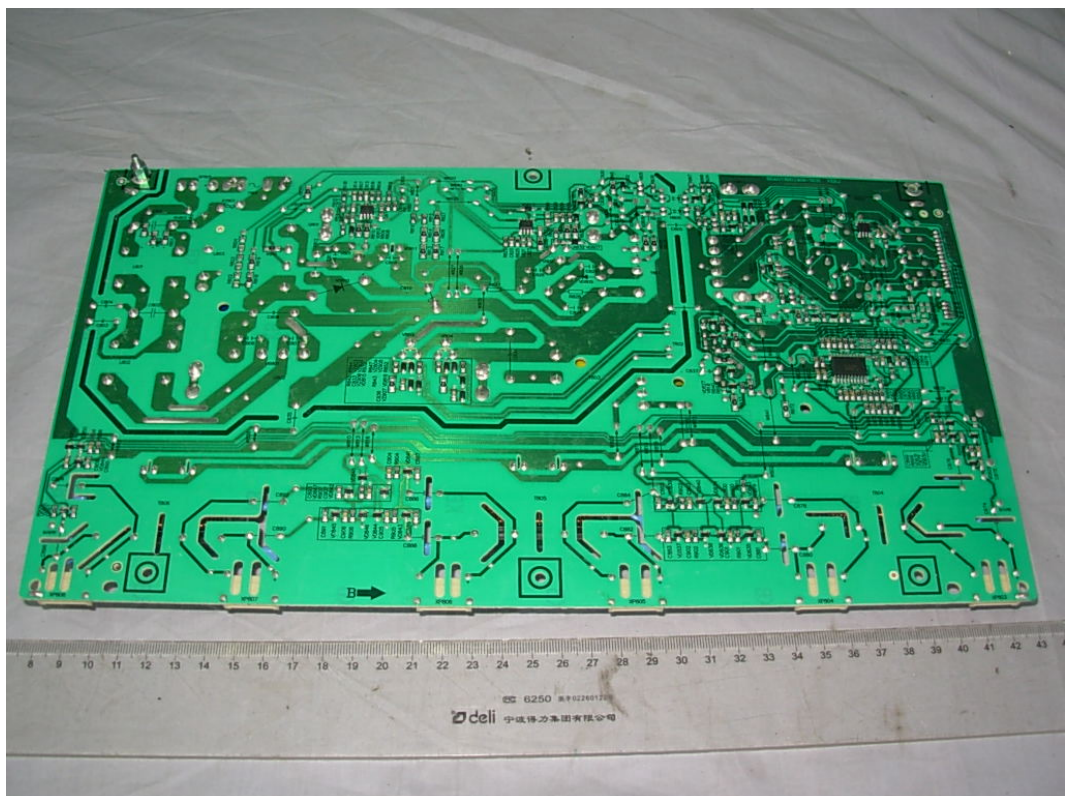


FIGURE 5  
LCD TV (M/N: LHDN32V68HUS)  
MAIN BOARD (COMPONENT SIDE)



FIGURE 6  
LCD TV (M/N: LHDN32V68HUS)  
MAIN BOARD (SOLDERED SIDE)

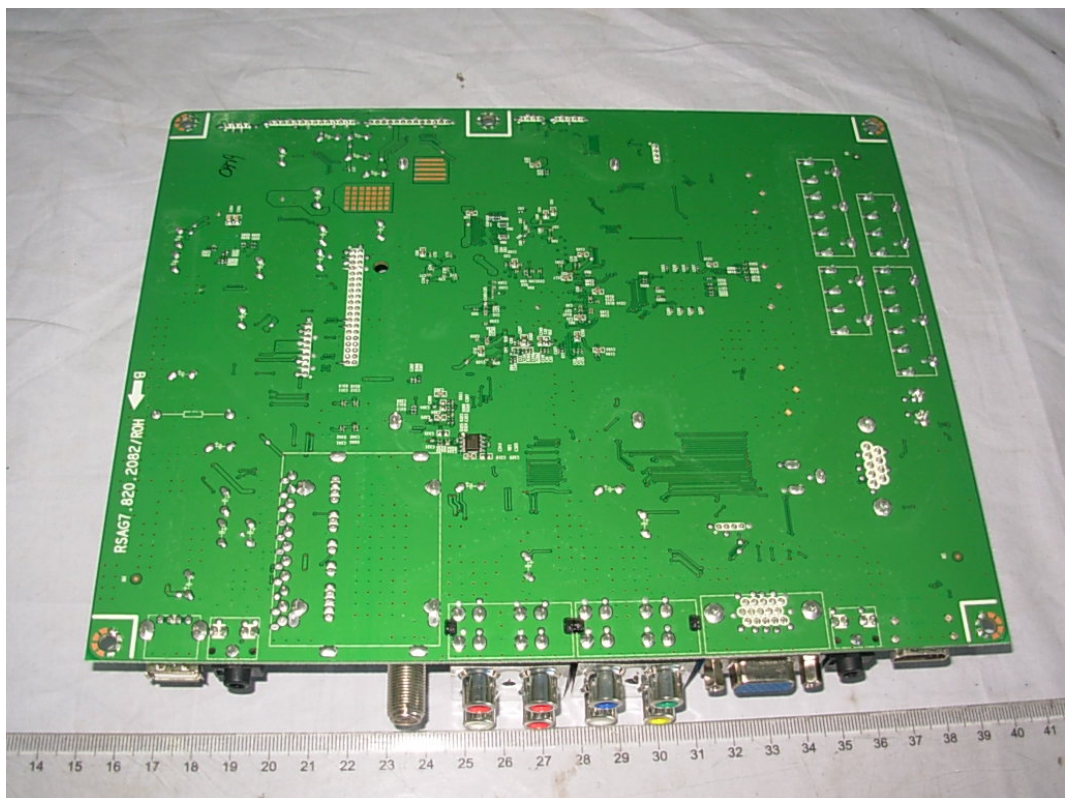


FIGURE 7  
LCD TV (M/N: LHDN32V68HUS)  
CRYSTAL & CHIP ON MAIN BOARD

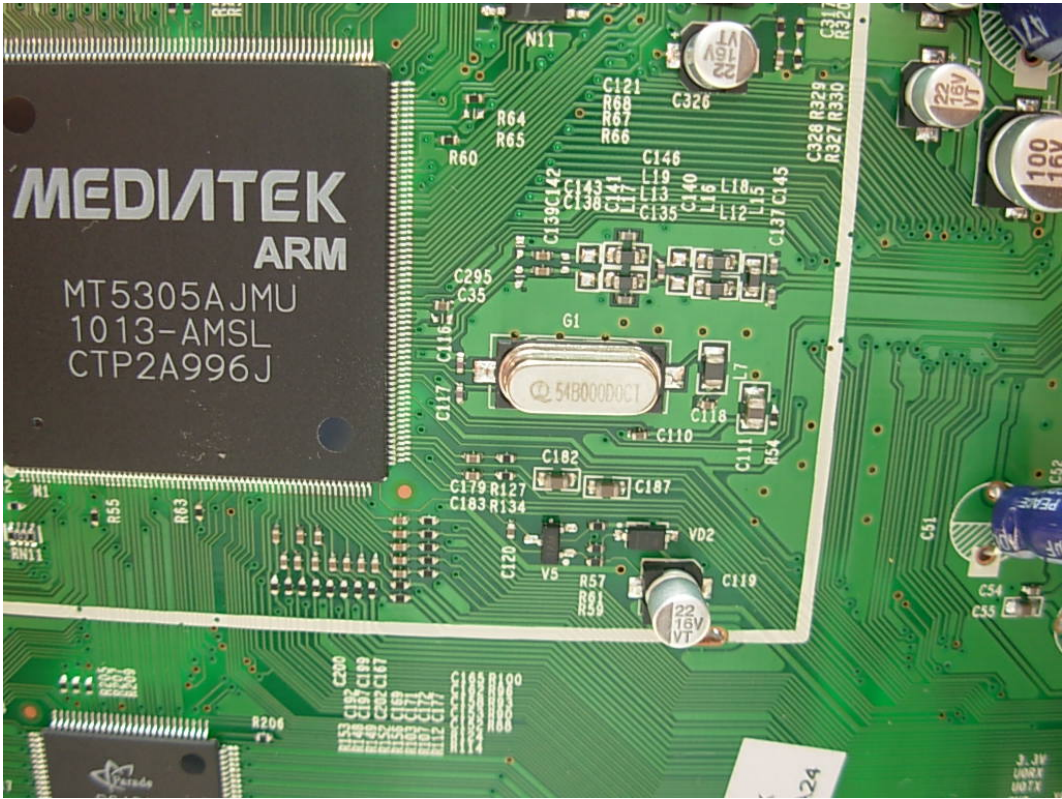


FIGURE 8  
LCD TV (M/N: LHDN32V68HUS)  
TUNER



FIGURE 9  
LCD TV (M/N: LHDN32V68HUS)  
IR BOARD (COMPONENT SIDE)

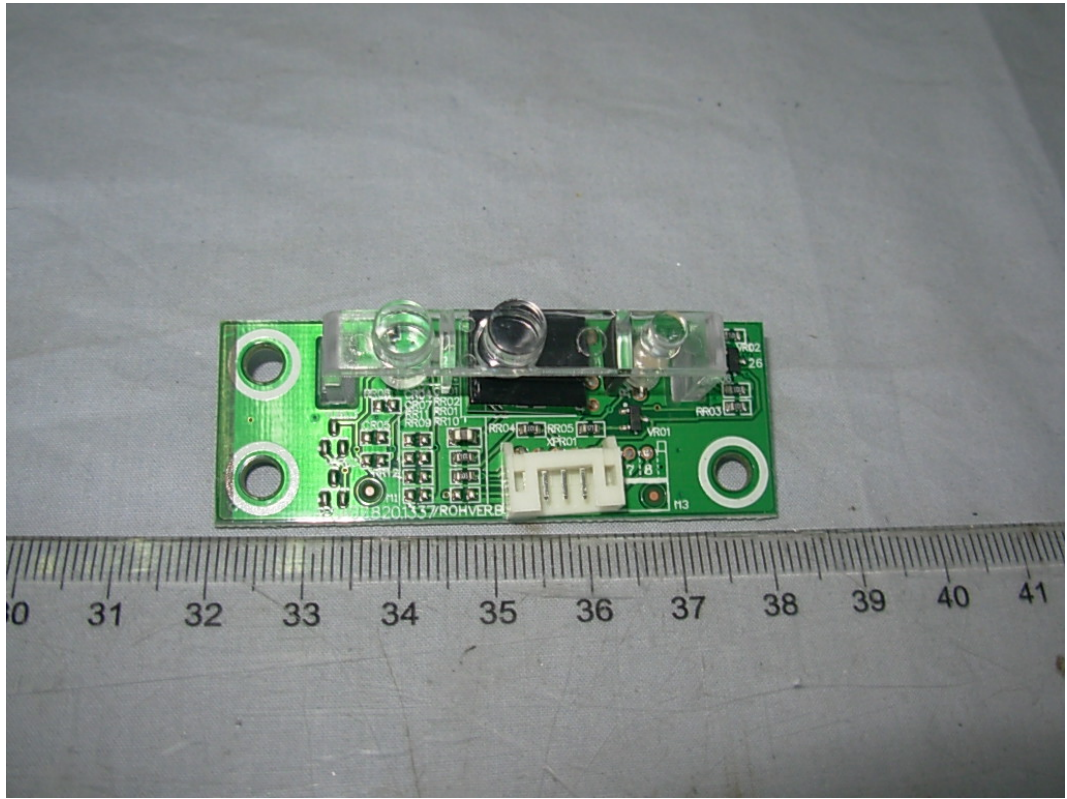


FIGURE 10  
LCD TV (M/N: LHDN32V68HUS)  
IR BOARD (SOLDERED SIDE)

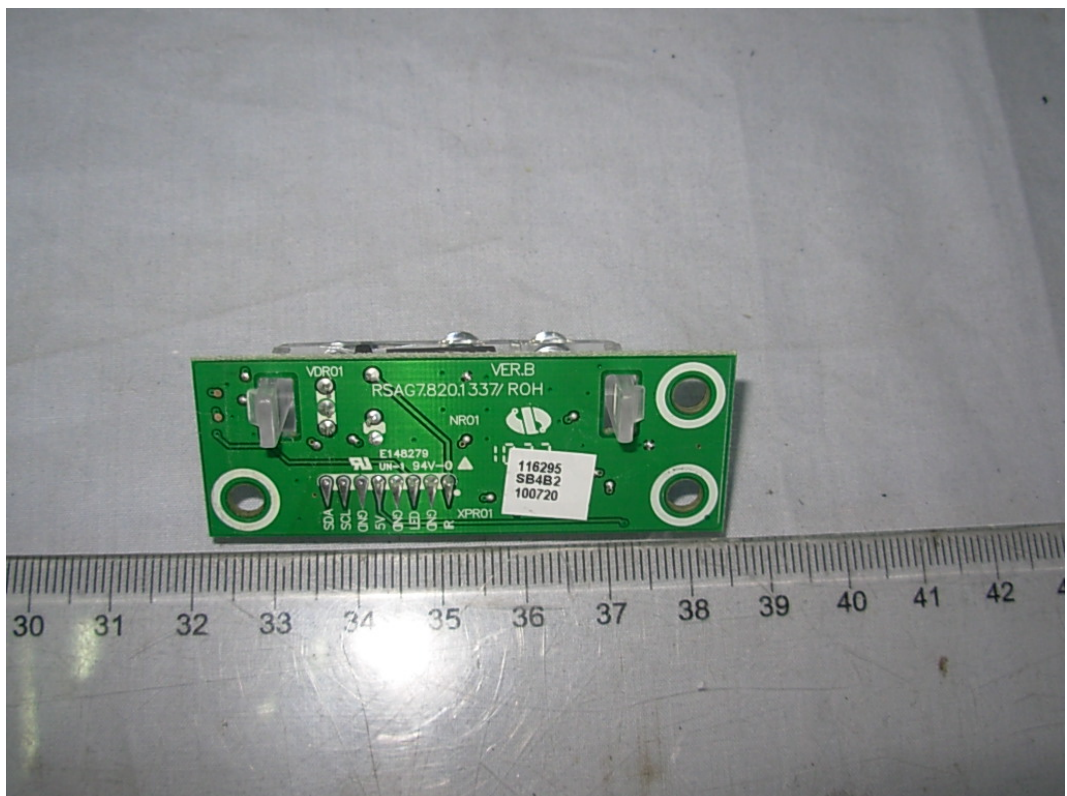


FIGURE 11  
LCD TV (M/N: LHDN32V68HUS)  
KEY BOARD (COMPONENT SIDE)

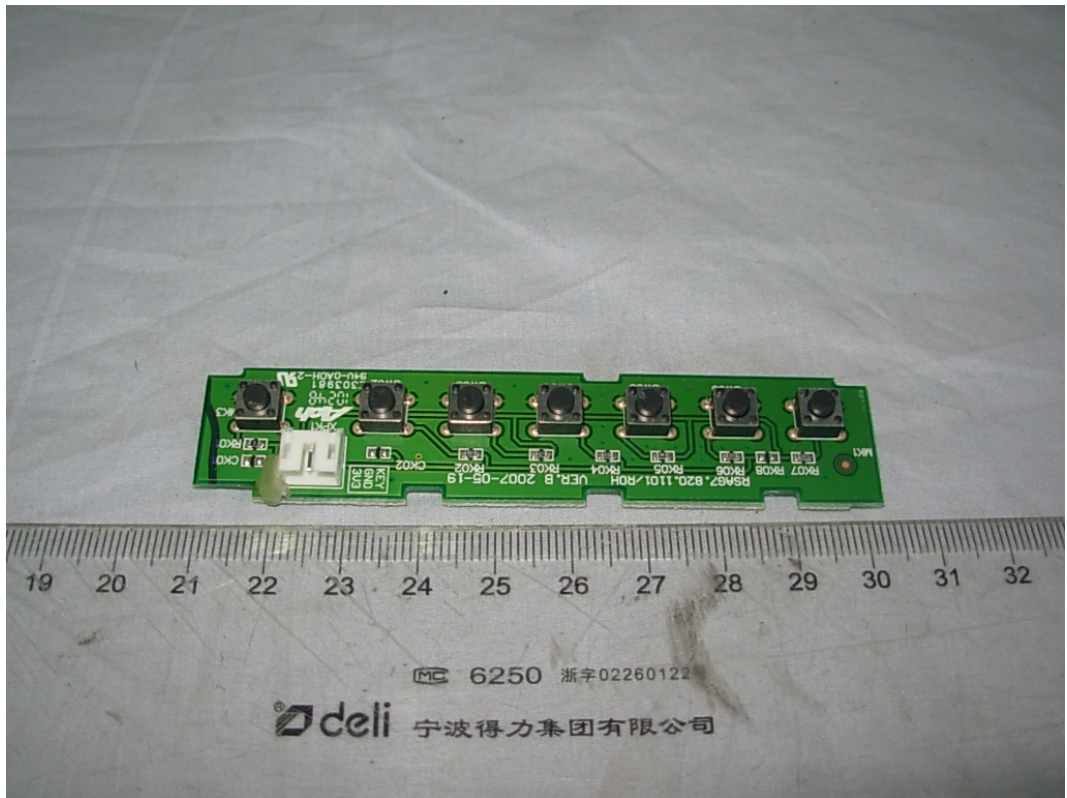


FIGURE 12  
LCD TV (M/N: LHDN32V68HUS)  
KEY BOARD (SOLDERED SIDE)

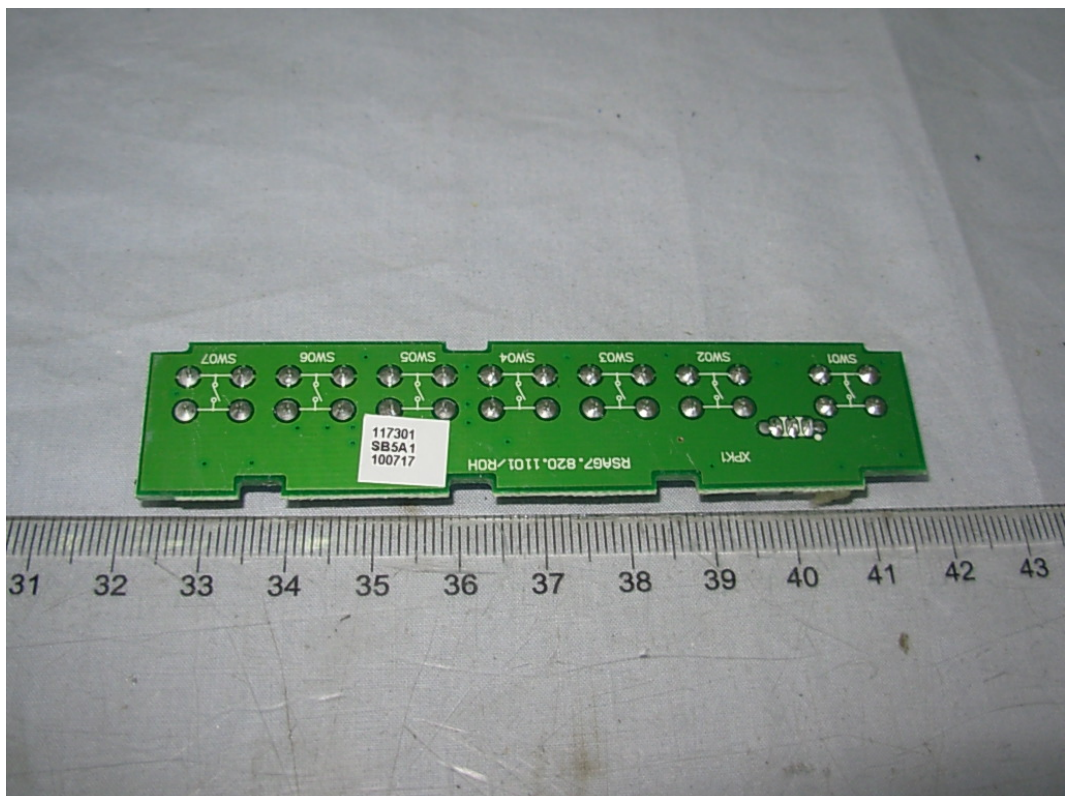


FIGURE 13  
 LCD TV (M/N: LHDN32V68HUS)  
 DEBUG#1

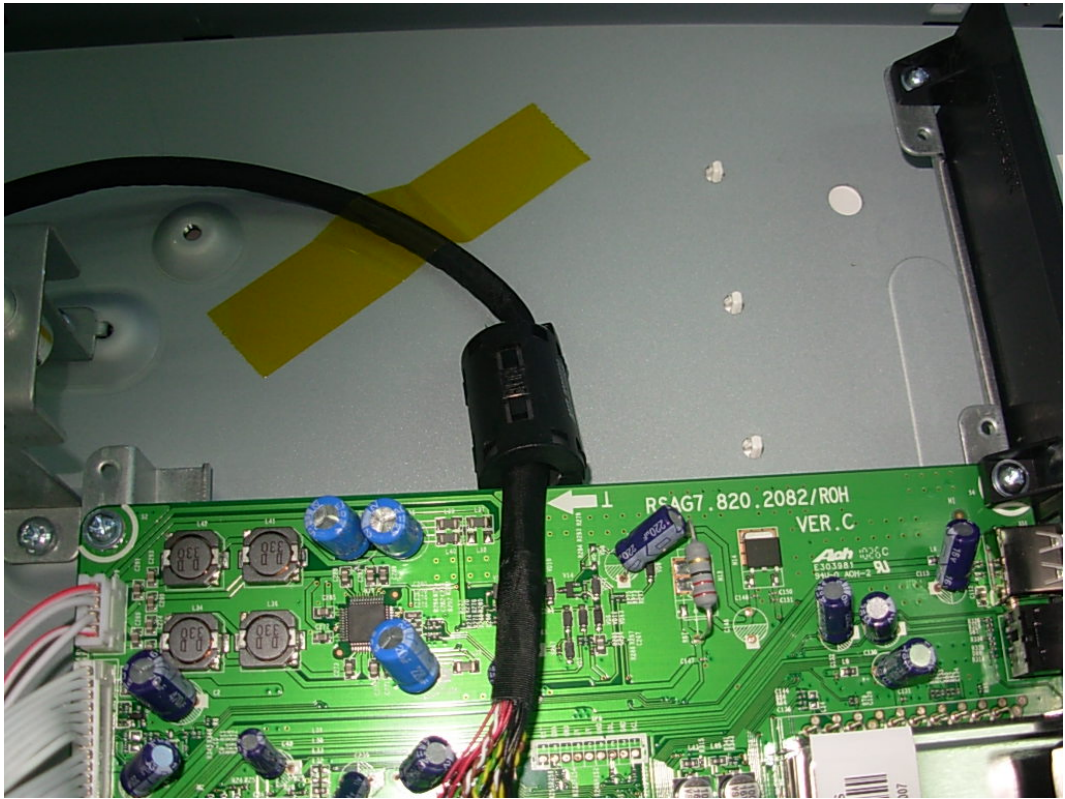


FIGURE 14  
 LCD TV (M/N: LHDN32V68HUS)  
 DEBUG#2

