

FIGURE 1
LCD TV (M/N: LHDN32V66AUS)
COVER REMOVED

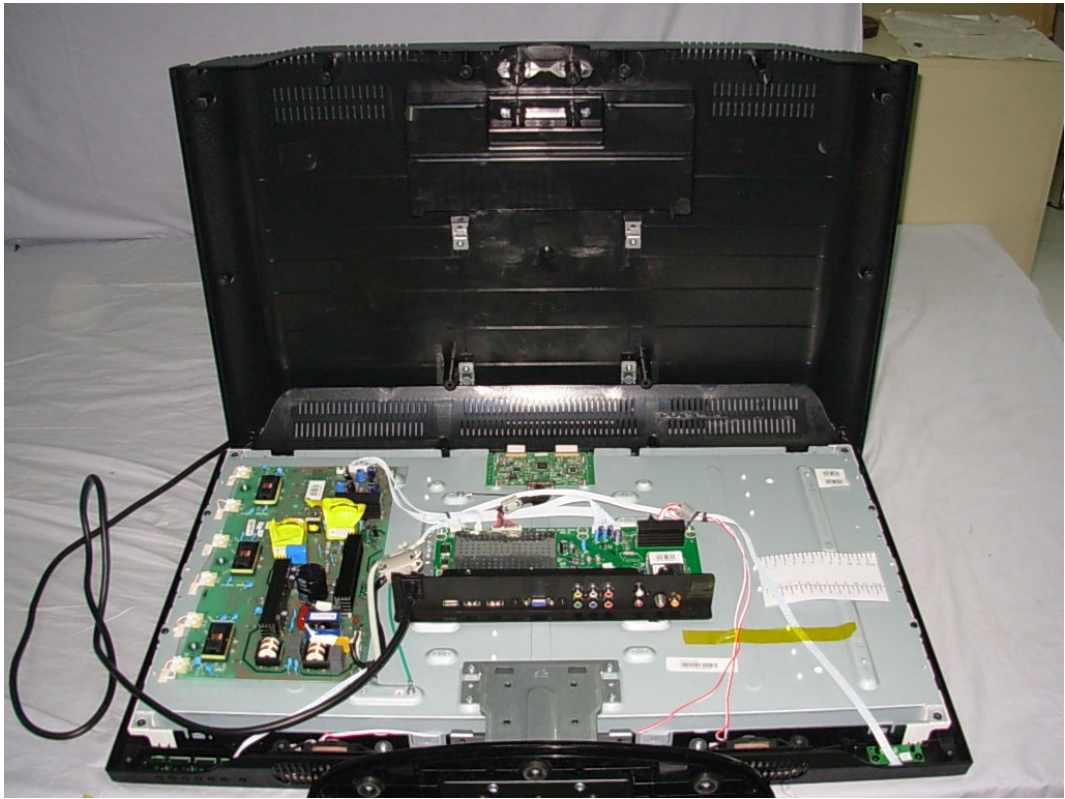


FIGURE 2
LCD TV (M/N: LHDN32V66AUS)
POWER BOARD (COMPONENT SIDE)

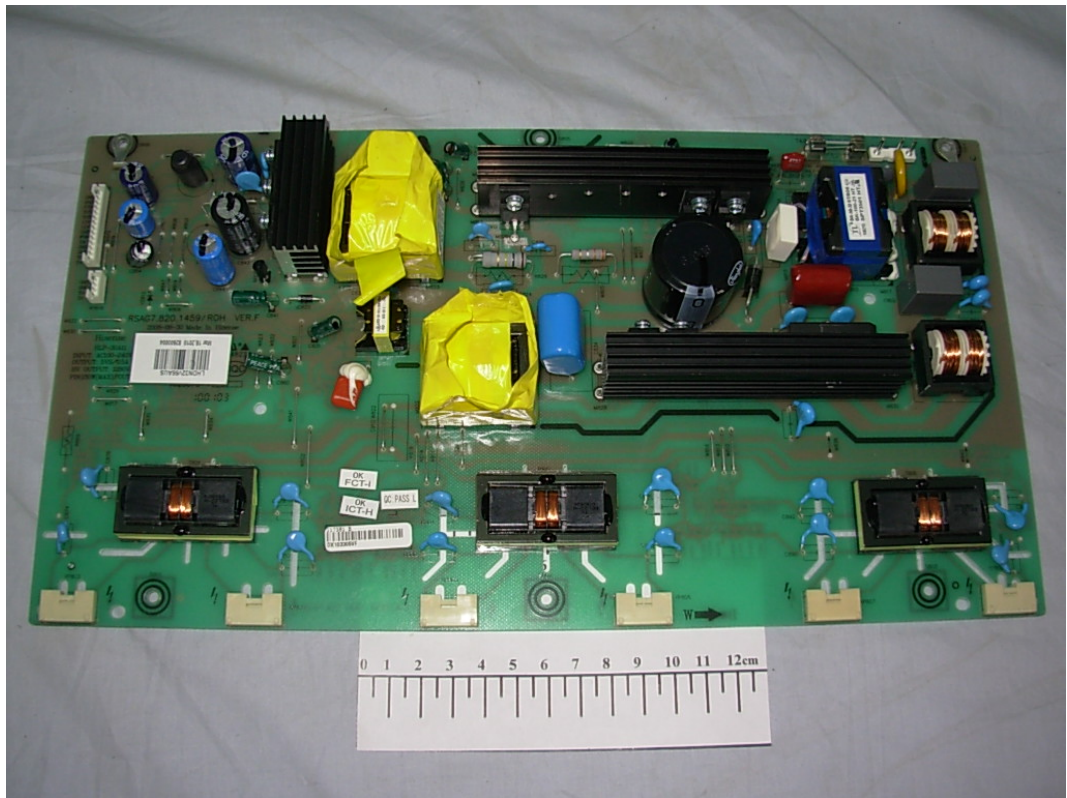


FIGURE 3
LCD TV (M/N: LHDN32V66AUS)
POWER BOARD (SOLDERED SIDE)

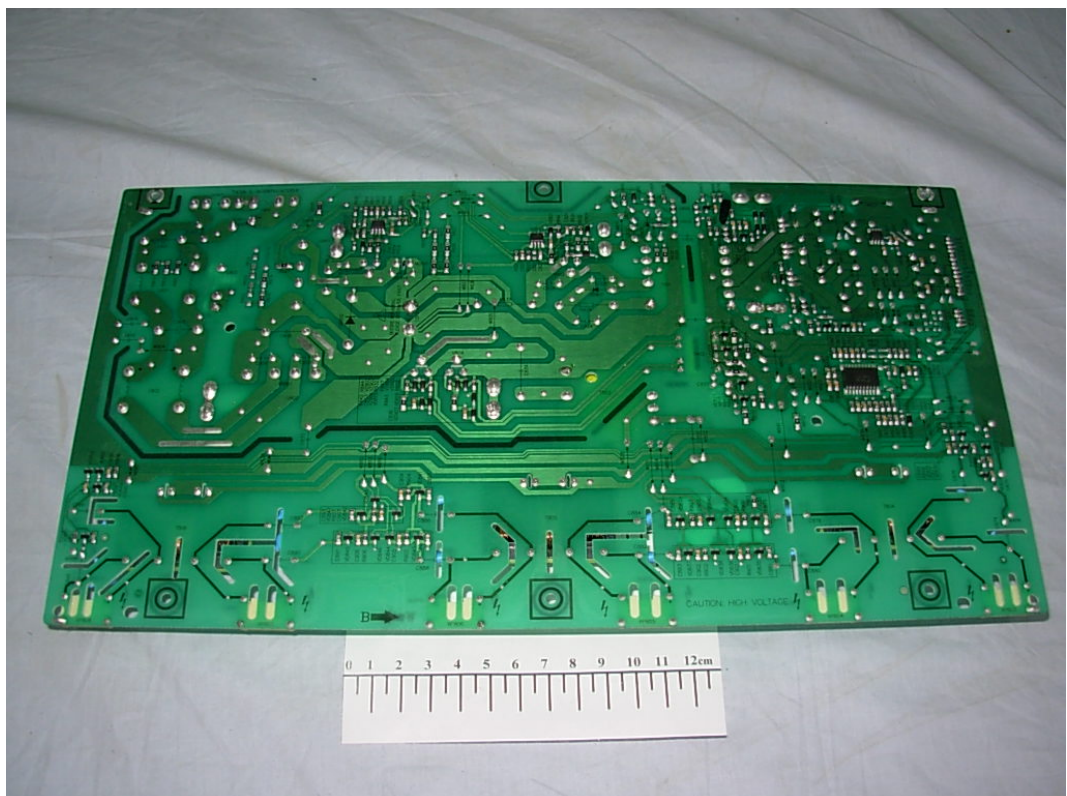


FIGURE 4
LCD TV (M/N: LHDN32V66AUS)
MAIN BOARD (COMPONENT SIDE)



FIGURE 5
LCD TV (M/N: LHDN32V66AUS)
MAIN BOARD (SOLDERED SIDE)

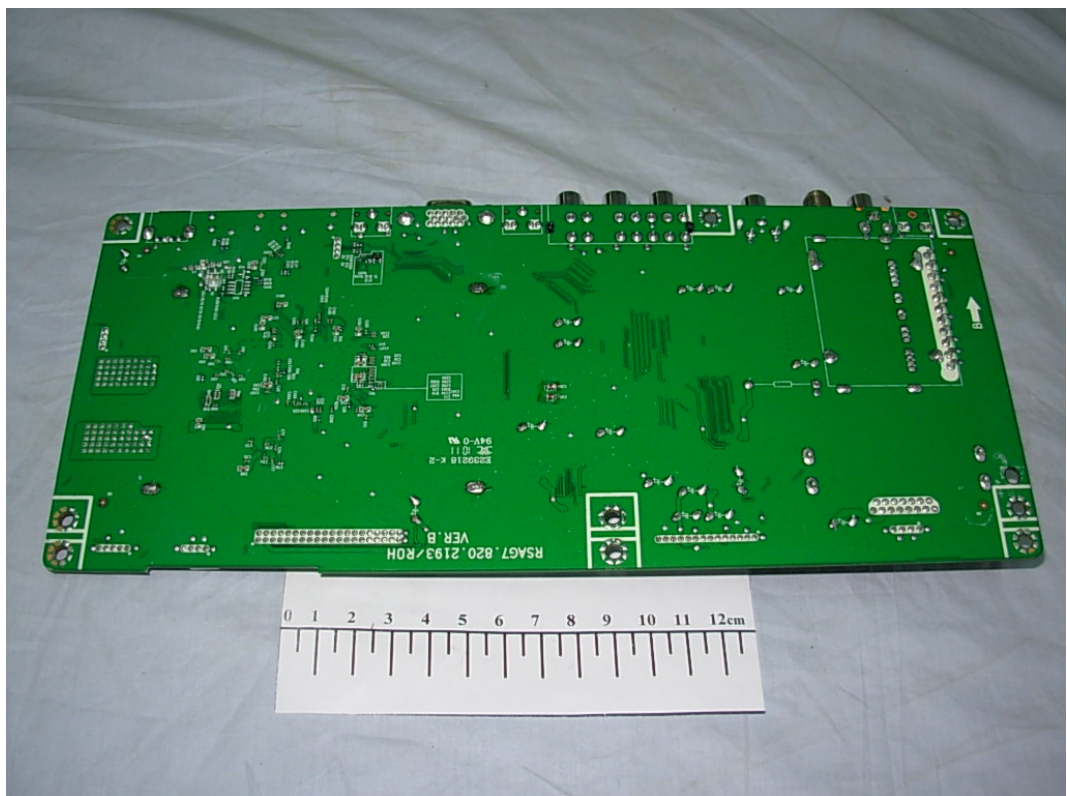


FIGURE 6
LCD TV (M/N: LHDN32V66AUS)
TUNER



FIGURE 7
LCD TV (M/N: LHDN32V66AUS)
CRYSTAL #1 & CHIP #1 ON MAIN BOARD

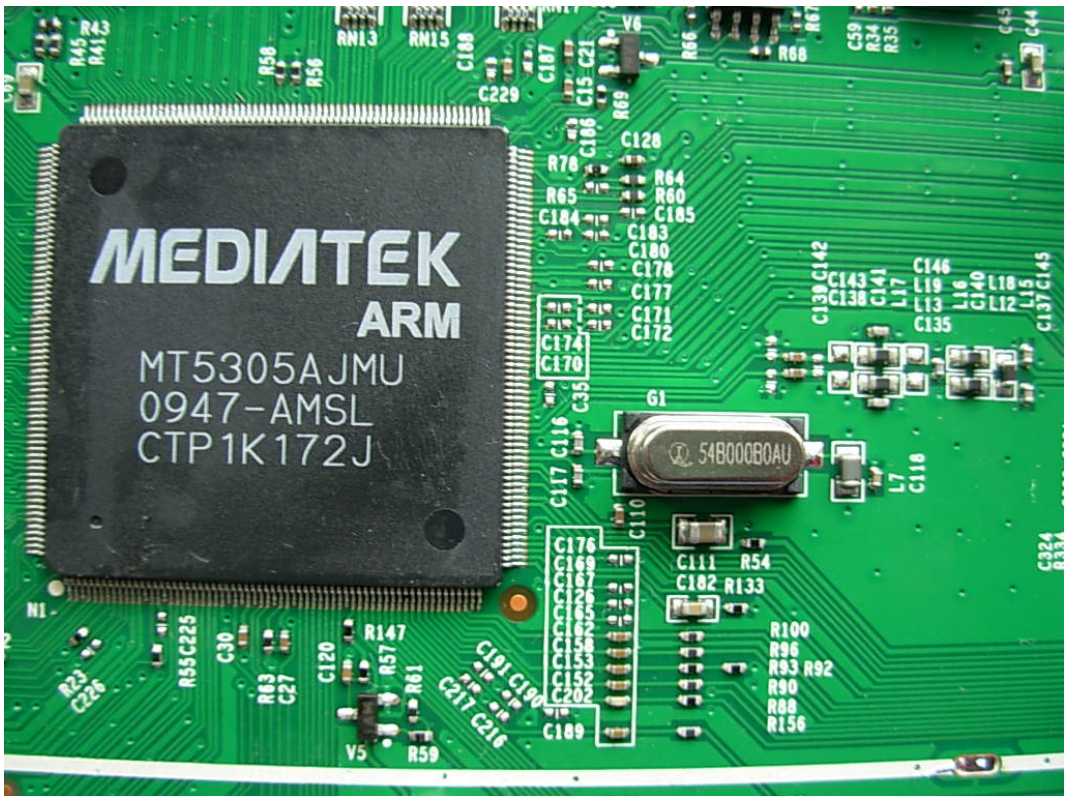


FIGURE 8
LCD TV (M/N: LHDN32V66AUS)
CHIP #2 ON MAIN BOARD

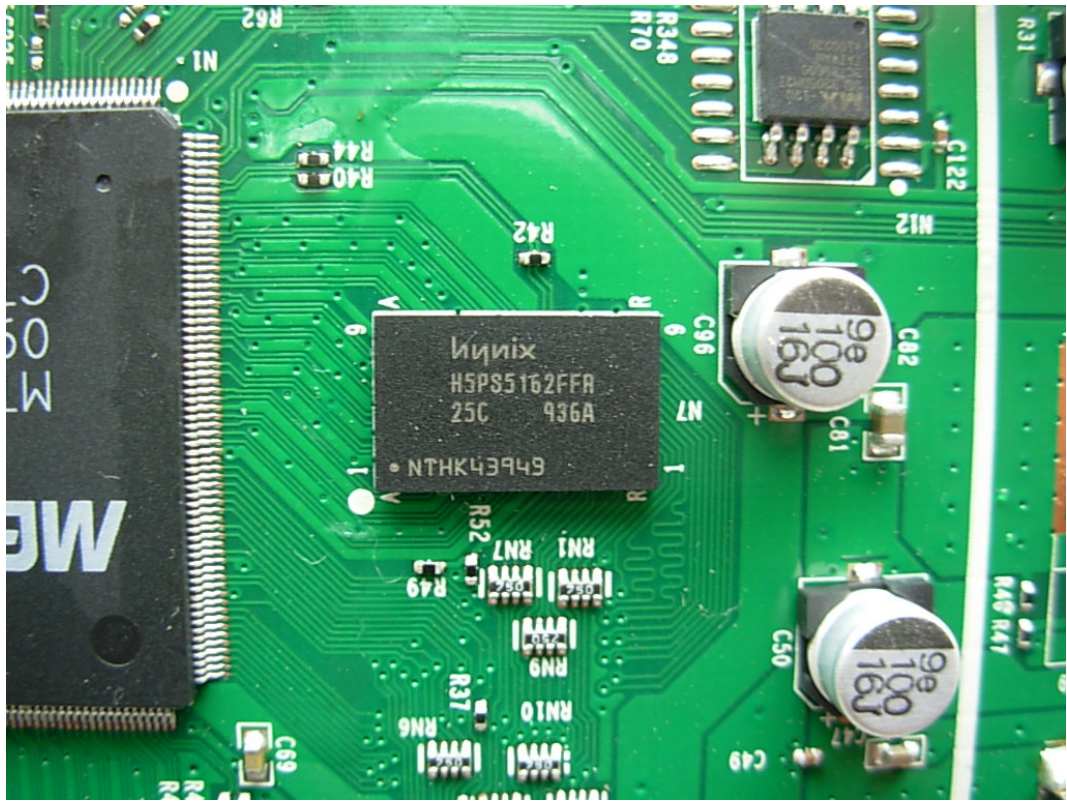


FIGURE 9
LCD TV (M/N: LHDN32V66AUS)
IR BOARD (COMPONENT SIDE)

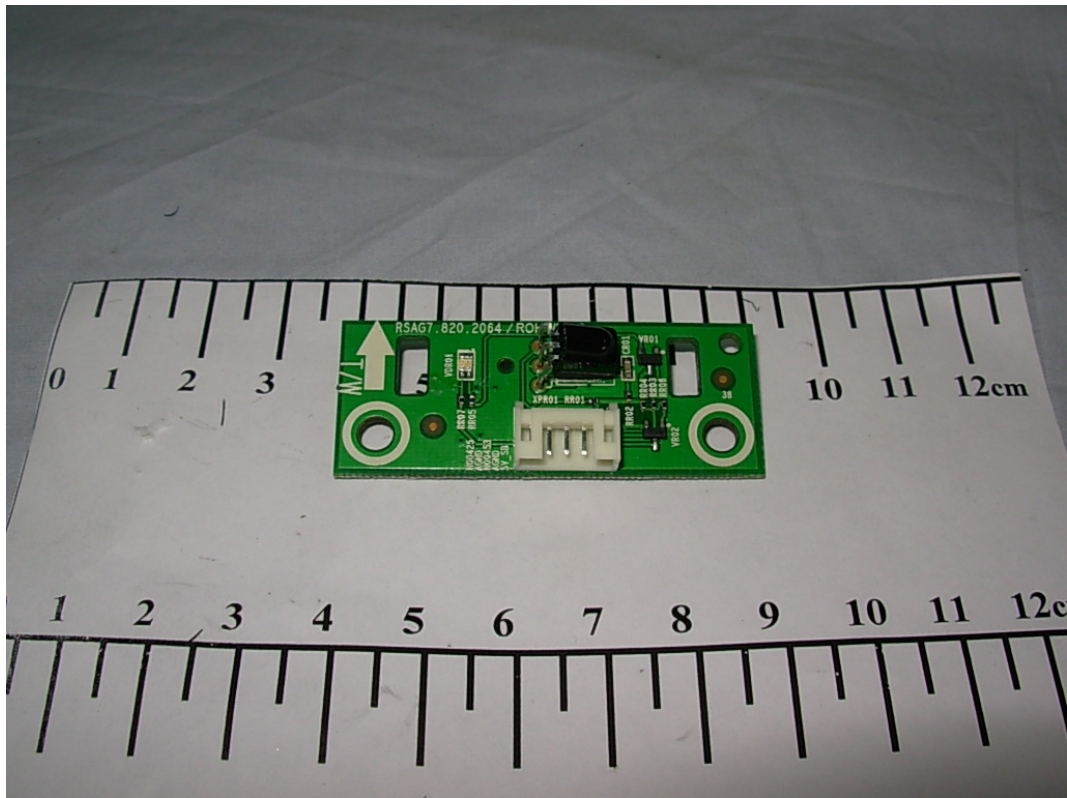


FIGURE 10
LCD TV (M/N: LHDN32V66AUS)
IR BOARD (SOLDERED SIDE)

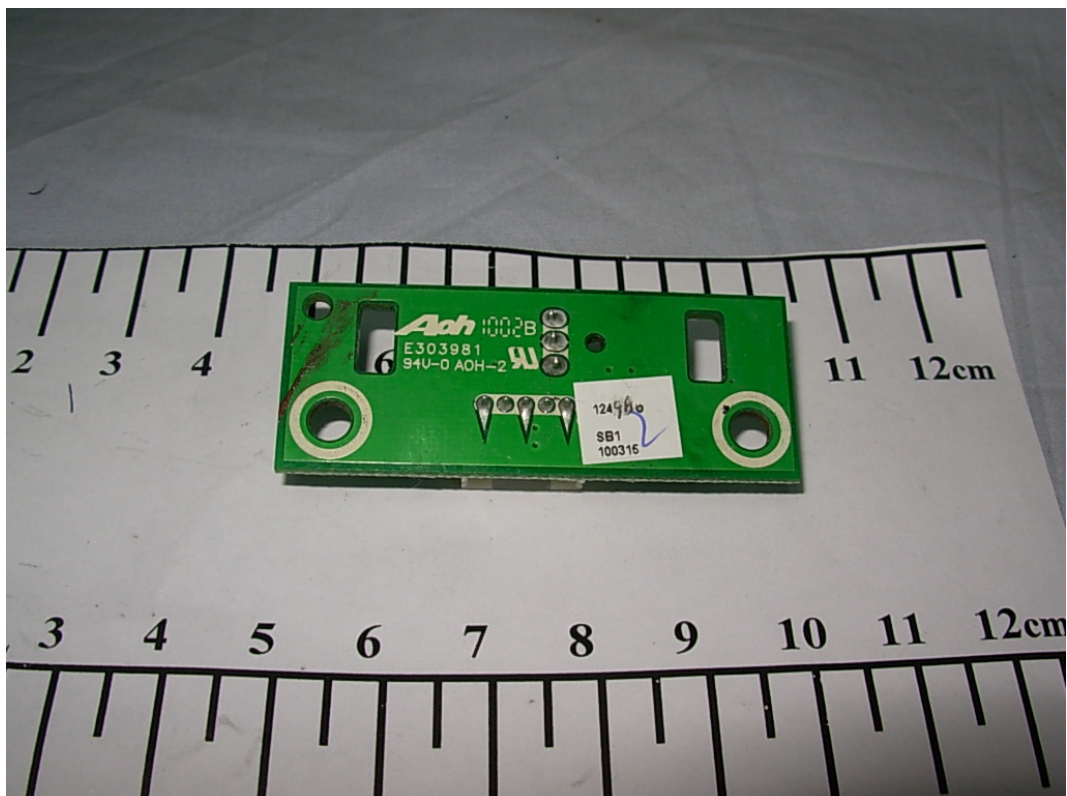


FIGURE 11
LCD TV (M/N: LHDN32V66AUS)
LCD PANEL LABEL



HS32LN2-IPS



124446CBT0T0P2HA0013

FIGURE 12
LCD TV (M/N: LHDN32V66AUS)
KEY BOARD (COMPONENT SIDE)

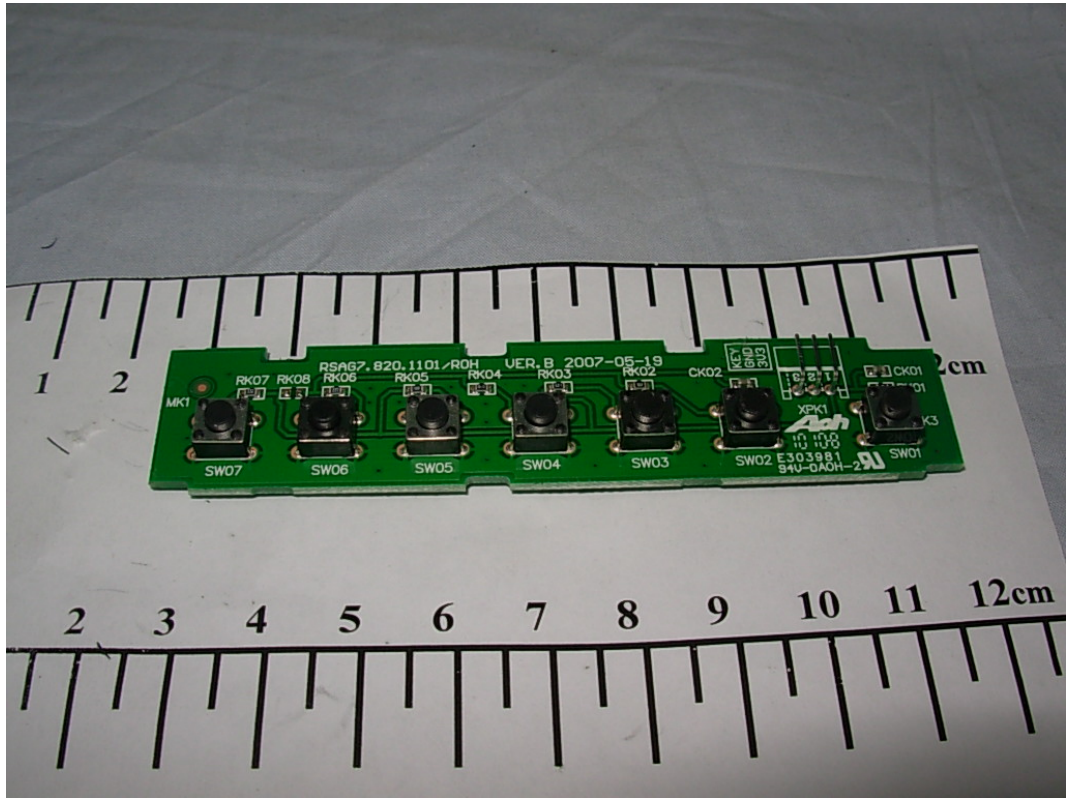


FIGURE 13
LCD TV (M/N: LHDN32V66AUS)
KEY BOARD (SOLDERED SIDE)

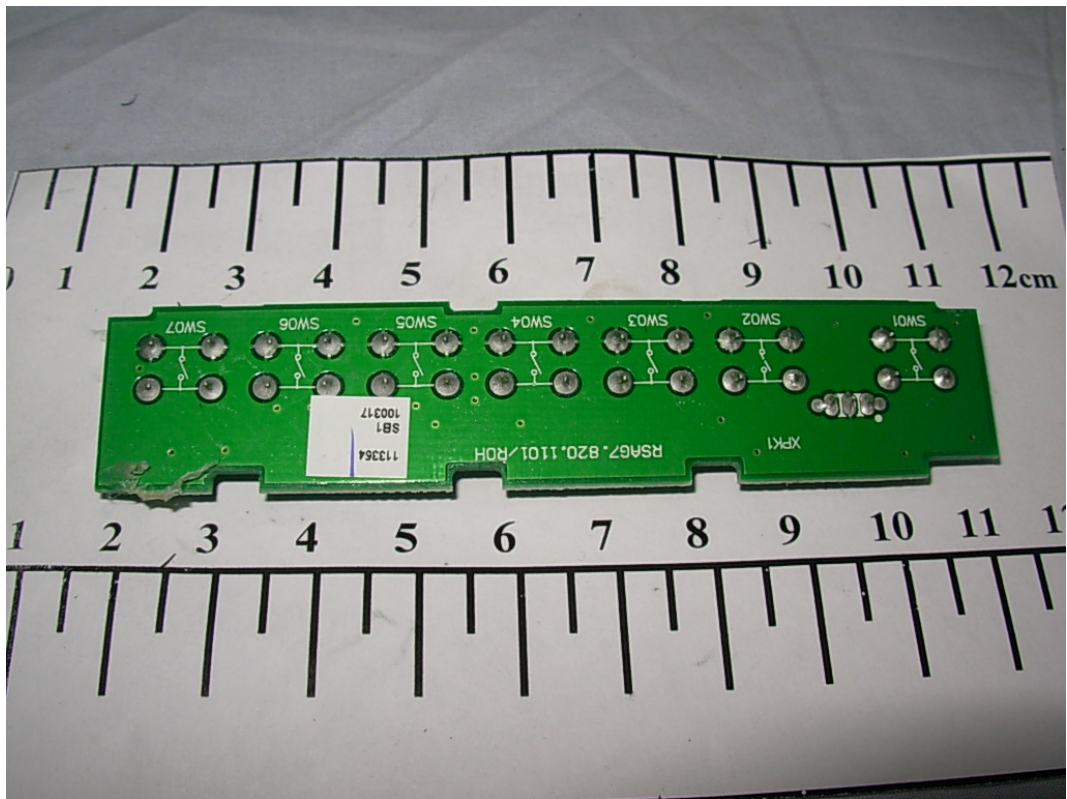


FIGURE 14
LCD TV (M/N: LHDN32V66AUS)
LCD PANEL MAIN BOARD (COMPONENT SIDE)

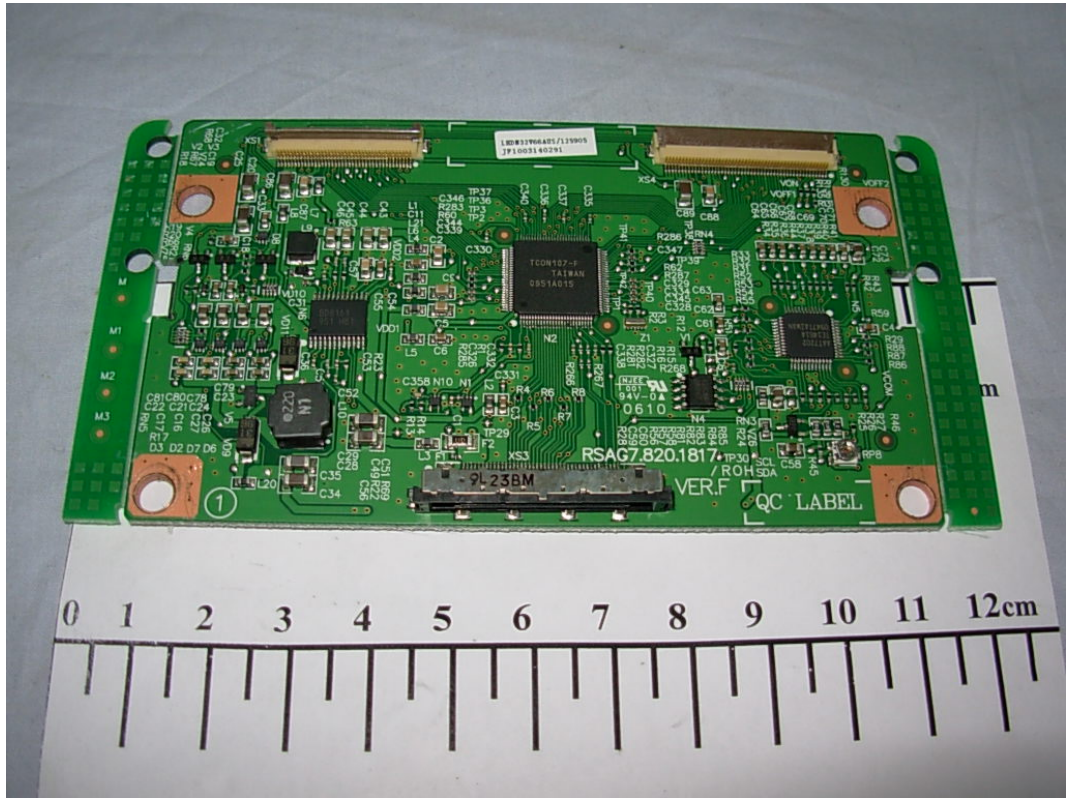


FIGURE 15
LCD TV (M/N: LHDN32V66AUS)
LCD PANEL MAIN BOARD (SOLDERED SIDE)

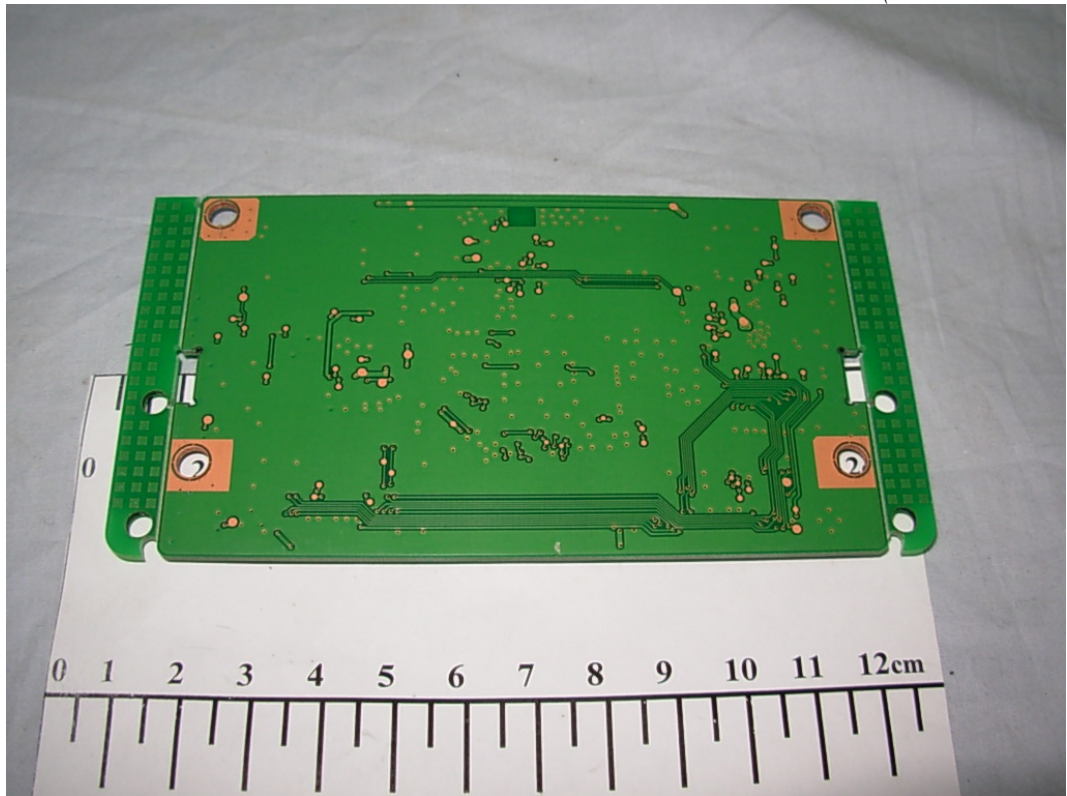


FIGURE 16
LCD TV (M/N: LHDN32V66AUS)
DEBUG #1

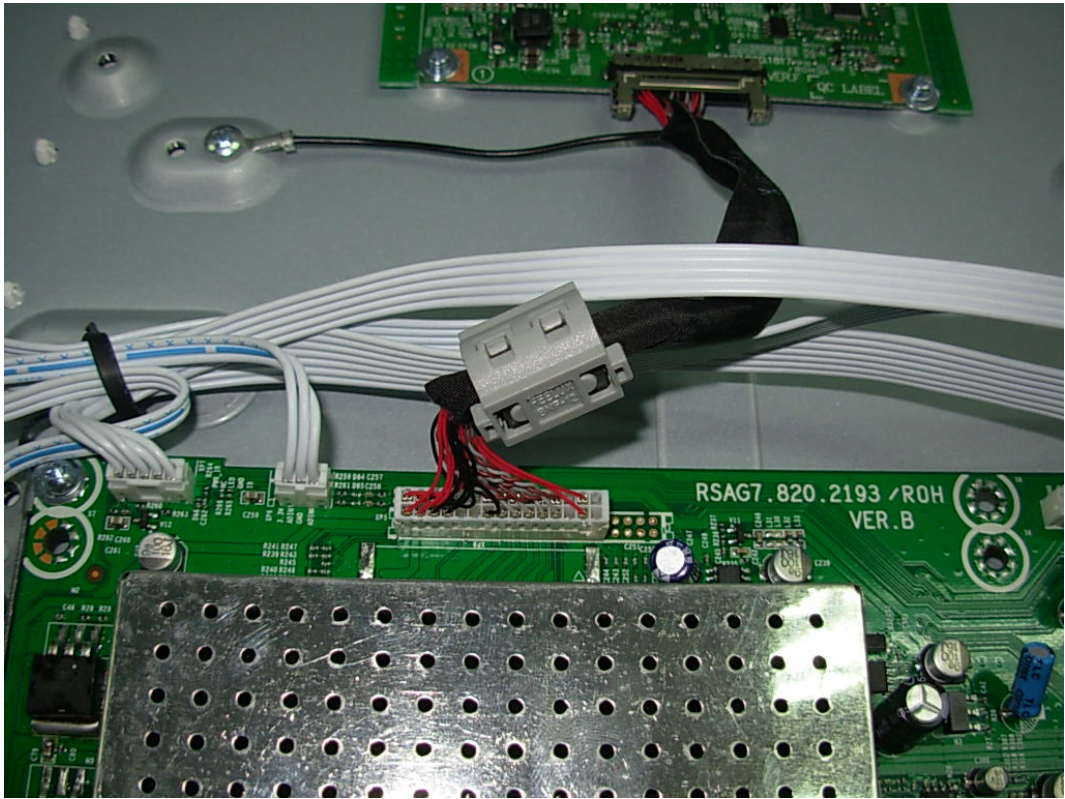


FIGURE 17
LCD TV (M/N: LHDN32V66AUS)
DEBUG #2

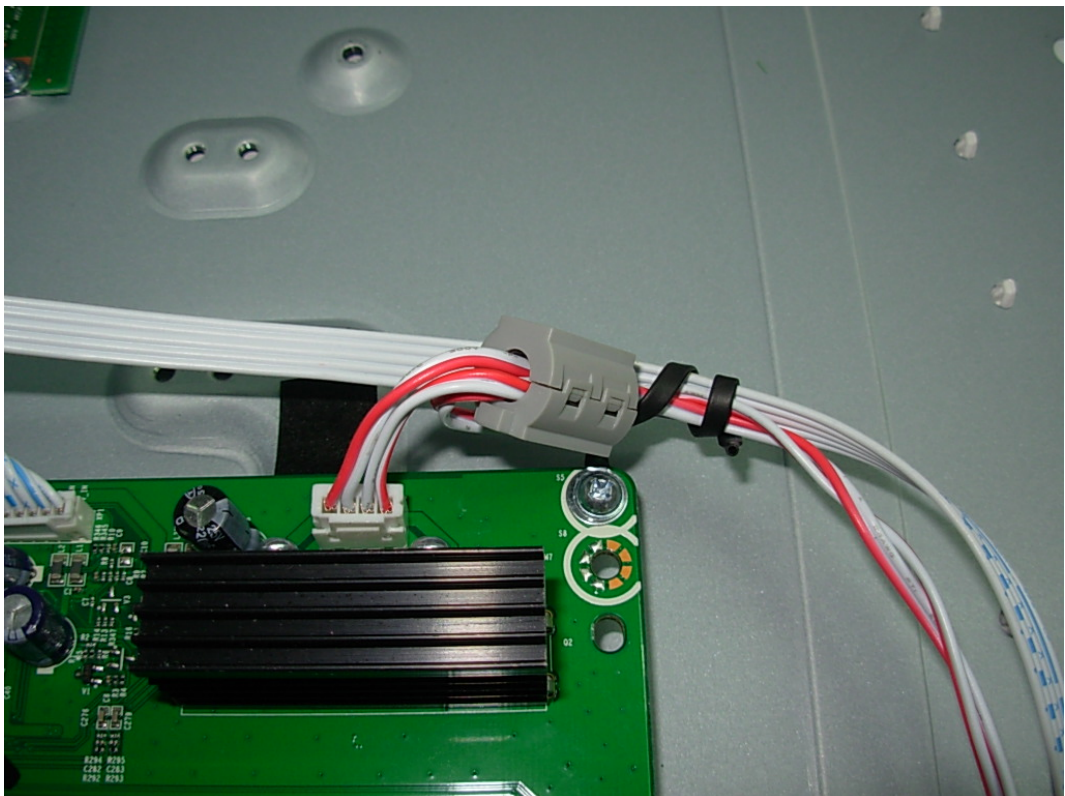


FIGURE 18
LCD TV (M/N: LHDN32V66AUS)
DEBUG #3

