

FIGURE 1  
LCD TV (M/N: LHDN32V88MH)  
COVER REMOVED



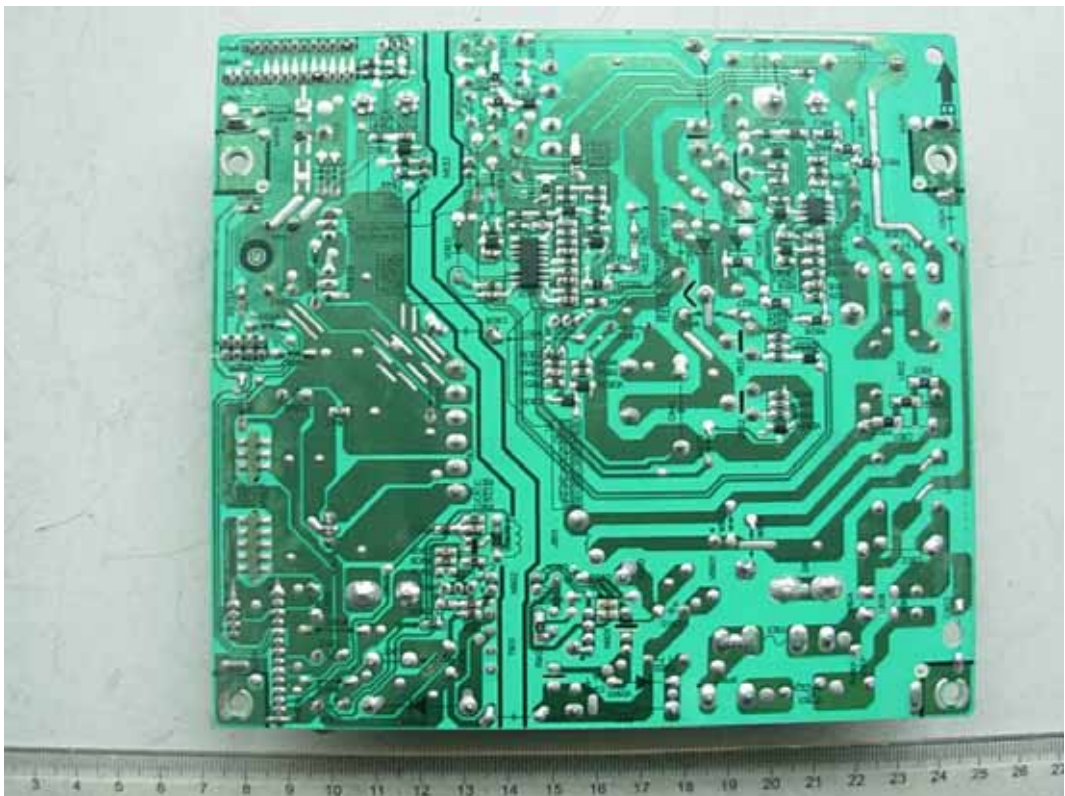
FIGURE 2  
LCD TV (M/N: LHDN32V88MH)  
LABEL ON PANEL



*FIGURE 3*  
*LCD TV (M/N: LHDN32V88MH)*  
*POWER BOARD (COMPONENT SIDE)*



*FIGURE 4*  
*LCD TV (M/N: LHDN32V88MH)*  
*POWER BOARD (SOLDERED SIDE)*



*FIGURE 5*  
*LCD TV (M/N: LHDN32V88MH)*  
*MAIN BOARD (COMPONENT SIDE)*



*FIGURE 6*  
*LCD TV (M/N: LHDN32V88MH)*  
*MAIN BOARD (SOLDERED SIDE)*

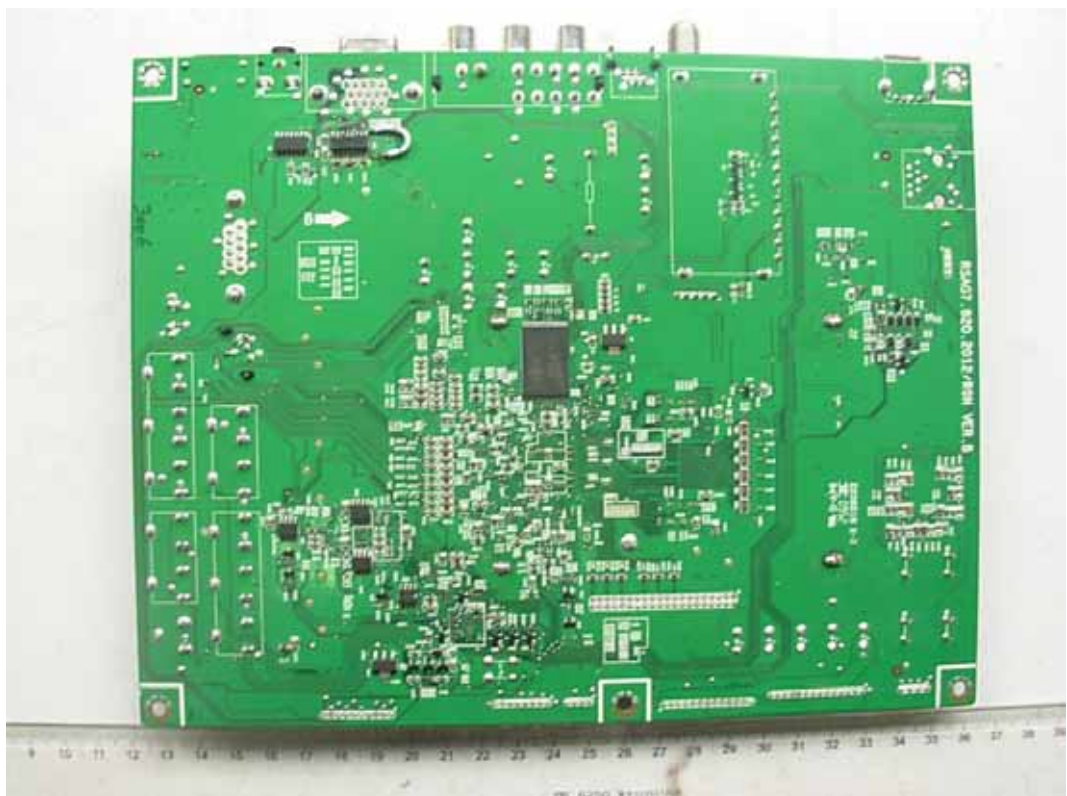


FIGURE 7  
LCD TV (M/N: LHDN32V88MH)  
TUNER



FIGURE 8  
LCD TV (M/N: LHDN32V88MH)  
CRYSTAL #1 & CHIP #1 ON MAIN BOARD



FIGURE 9  
LCD TV (M/N: LHDN32V88MH)  
CRYSTAL #2 ON MAIN BOARD



FIGURE 10  
LCD TV (M/N: LHDN32V88MH)  
CRYSTAL #3 ON MAIN BOARD

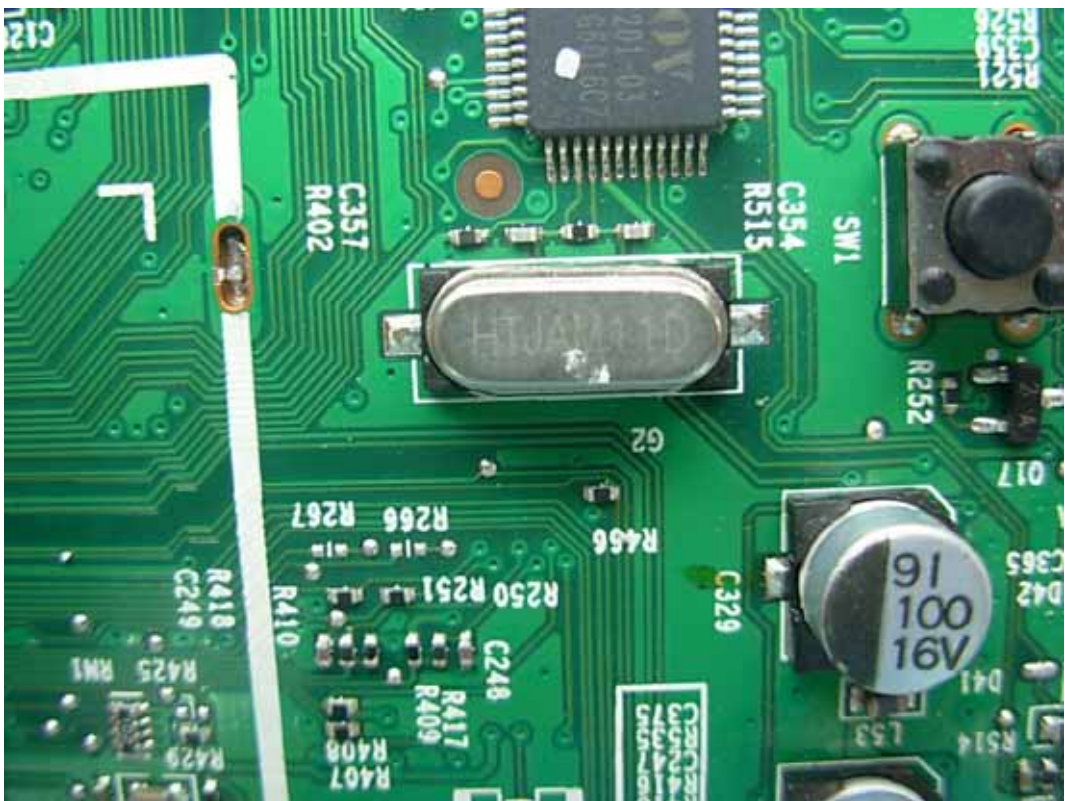


FIGURE 11  
LCD TV (M/N: LHDN32V88MH)  
CHIP #2 ON MAIN BOARD



FIGURE 12  
LCD TV (M/N: LHDN32V88MH)  
KEY BOARD (COMPONENT SIDE)



FIGURE 13  
LCD TV (M/N: LHDN32V88MH)  
KEY BOARD (SOLDERED SIDE)



FIGURE 14  
LCD TV (M/N: LHDN32V88MH)  
IR BOARD (COMPONENT SIDE)

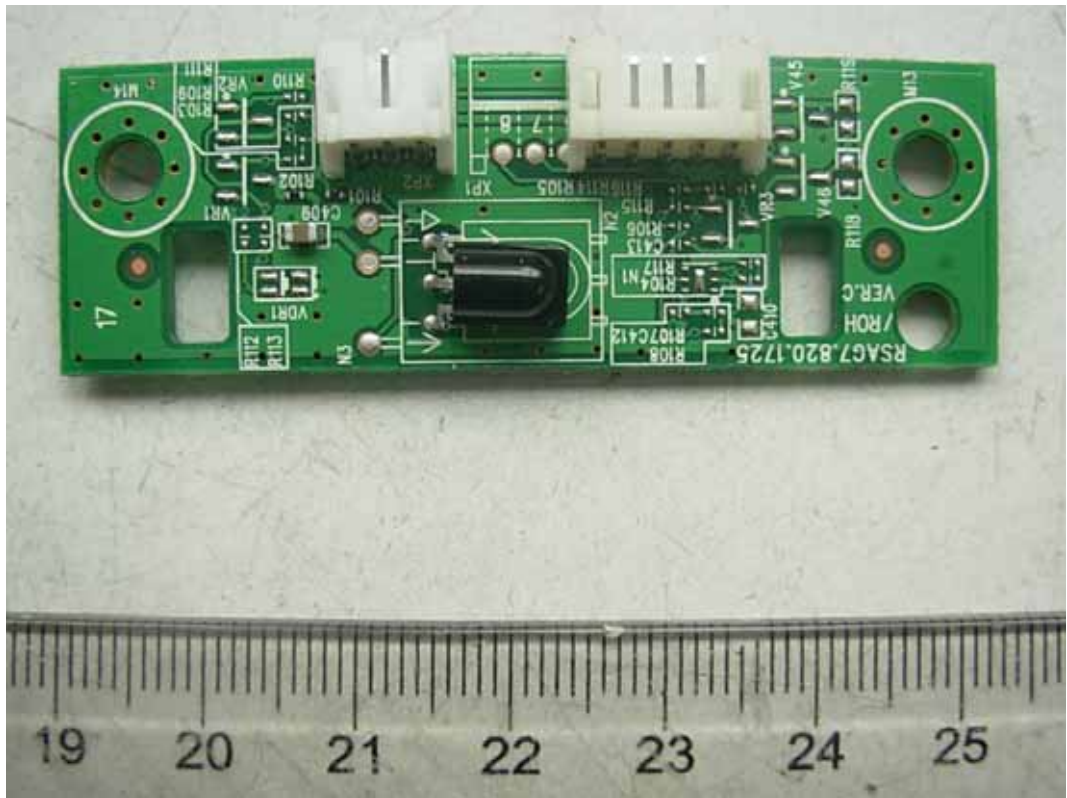
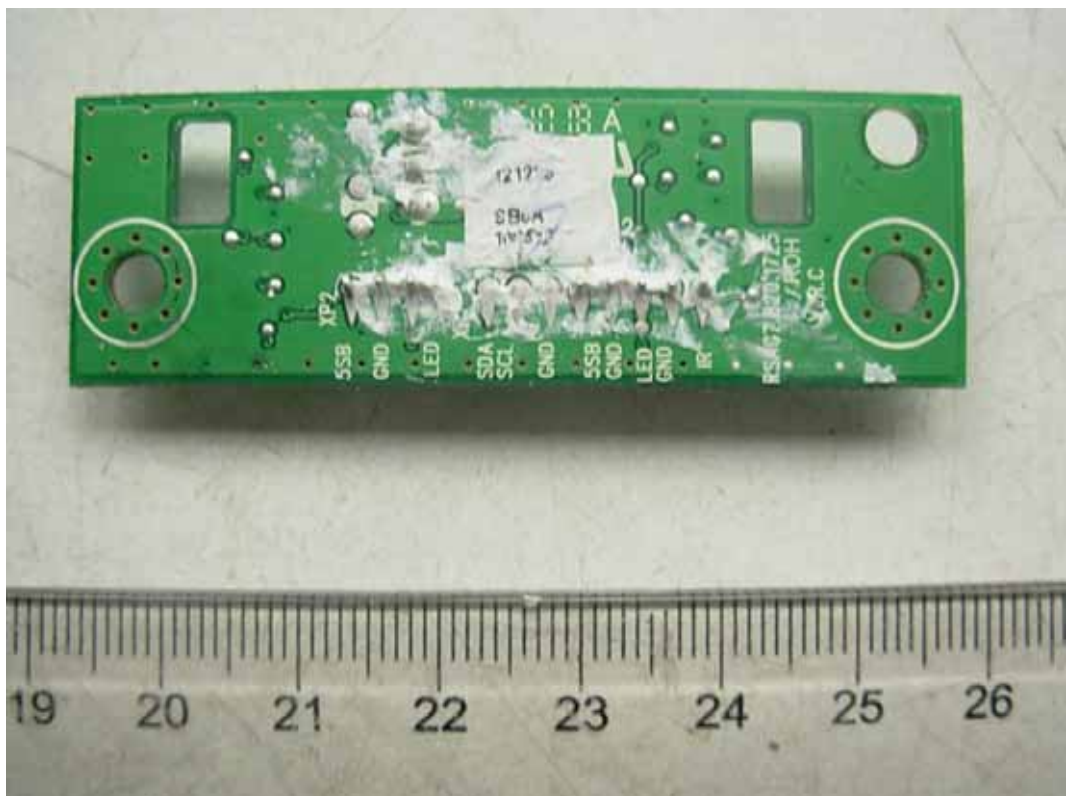


FIGURE 15  
LCD TV (M/N: LHDN32V88MH)  
IR BOARD (SOLDERED SIDE)





*FIGURE 16*  
*LCD TV (M/N: LHDN32V88MH)*  
*HIGH VOLTAGE SIGNAL BOARD (COMPONENT SIDE)*



*FIGURE 17*  
*LCD TV (M/N: LHDN32V88MH)*  
*HIGH VOLTAGE SIGNAL BOARD (SOLDERED SIDE)*

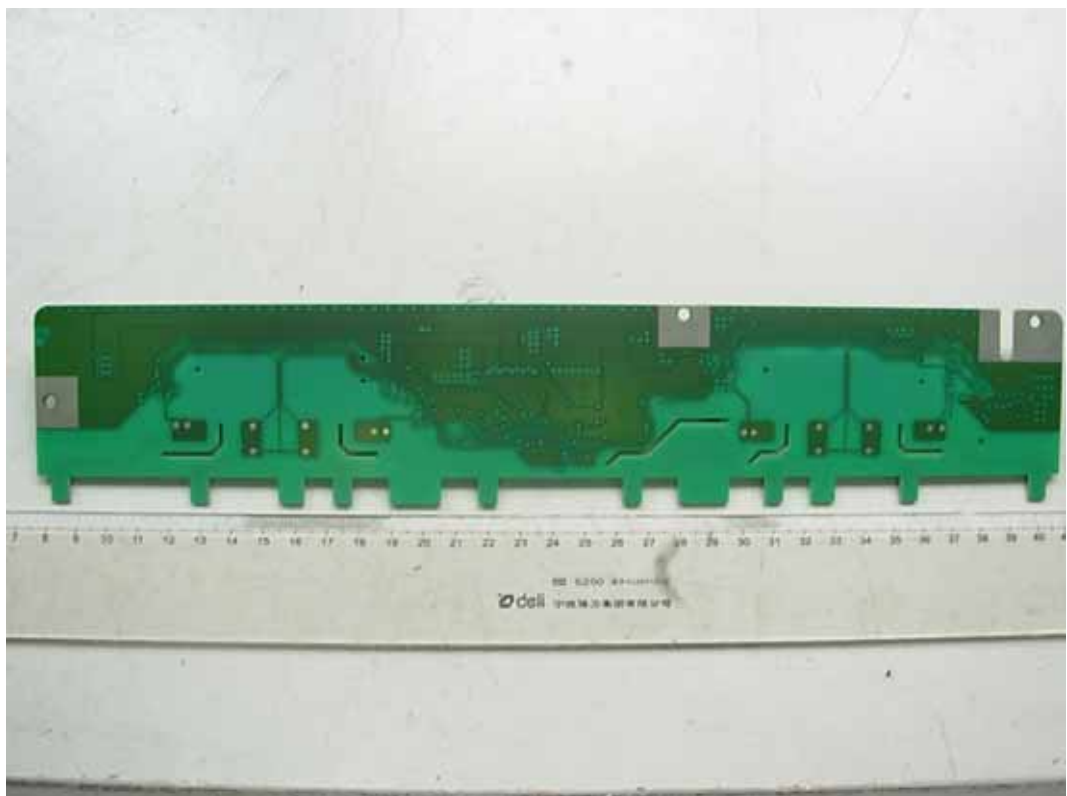


FIGURE 18  
LCD TV (M/N: LHDN32V88MH)  
DEBUG #1



FIGURE 19  
LCD TV (M/N: LHDN32V88MH)  
DEBUG #2



FIGURE 20  
LCD TV (M/N: LHDN32V88MH)  
DEBUG #3

