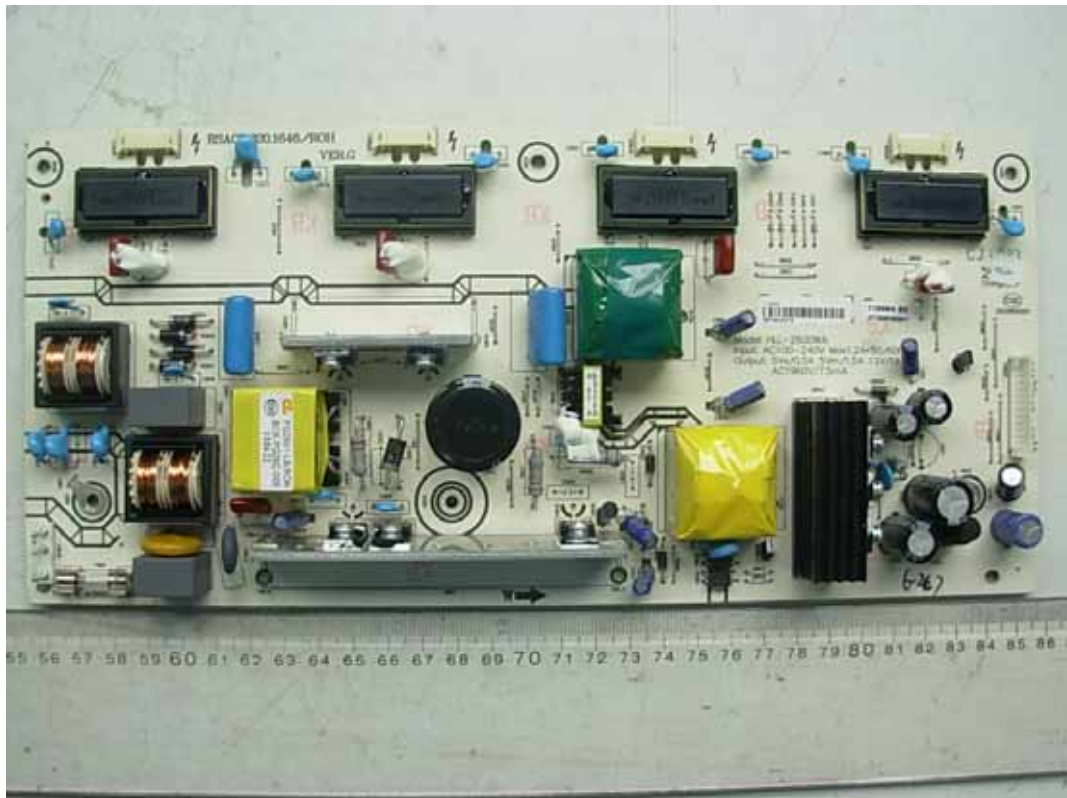


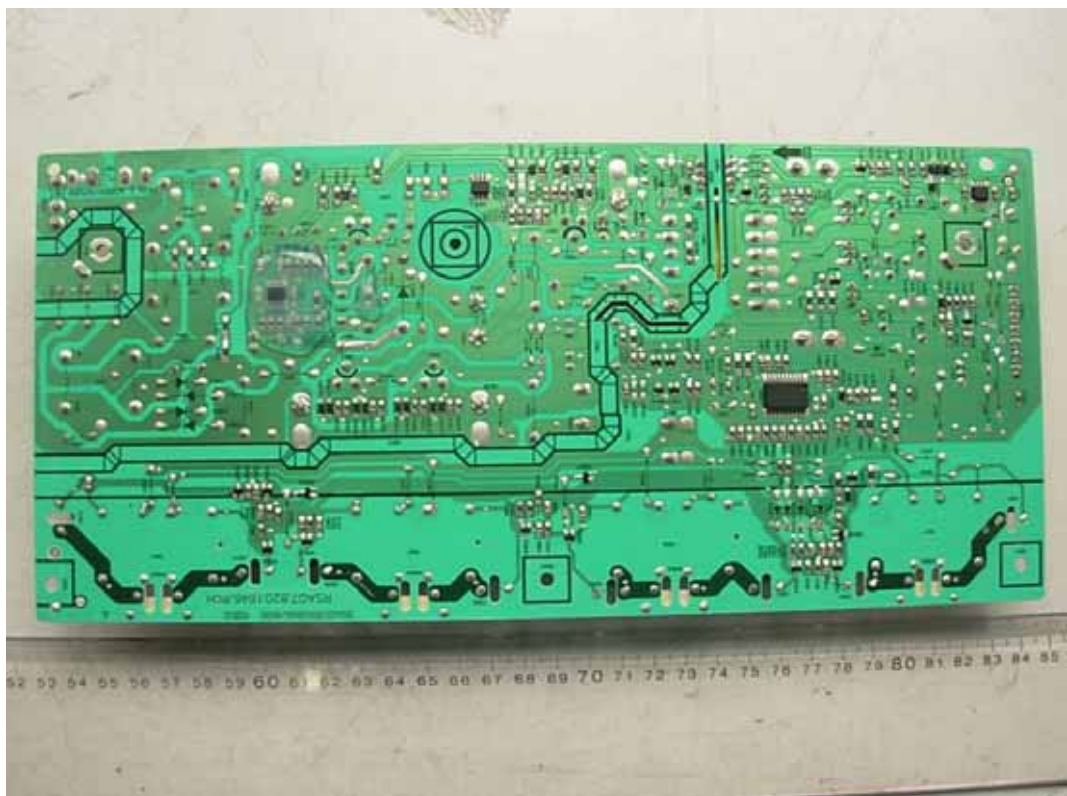
FIGURE 1
LCD TV (M/N: LTDN26W60HS)
COVER REMOVED



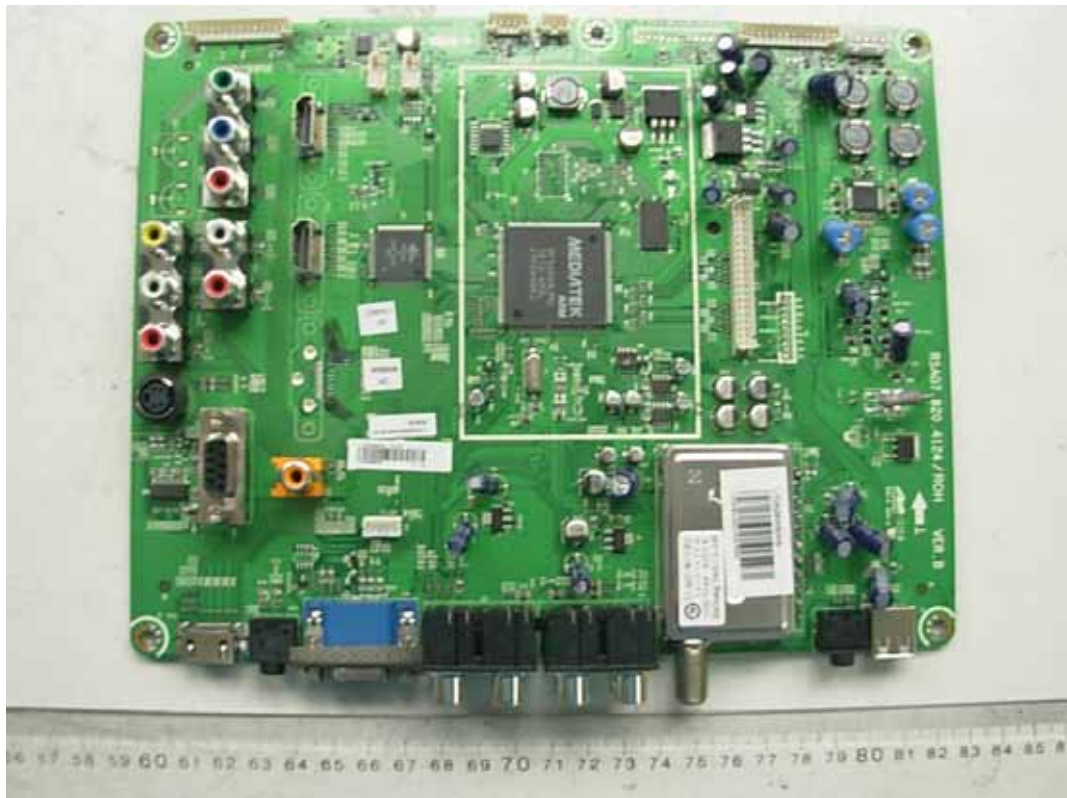
*FIGURE 2
LCD TV (M/N: LTDN26W60HS)
POWER BOARD (COMPONENT SIDE)*



*FIGURE 3
LCD TV (M/N: LTDN26W60HS)
POWER BOARD (SOLDERED SIDE)*



*FIGURE 4
LCD TV (M/N: LTDN26W60HS)
MAIN BOARD (COMPONENT SIDE)*



*FIGURE 5
LCD TV (M/N: LTDN26W60HS)
MAIN BOARD (SOLDERED SIDE)*

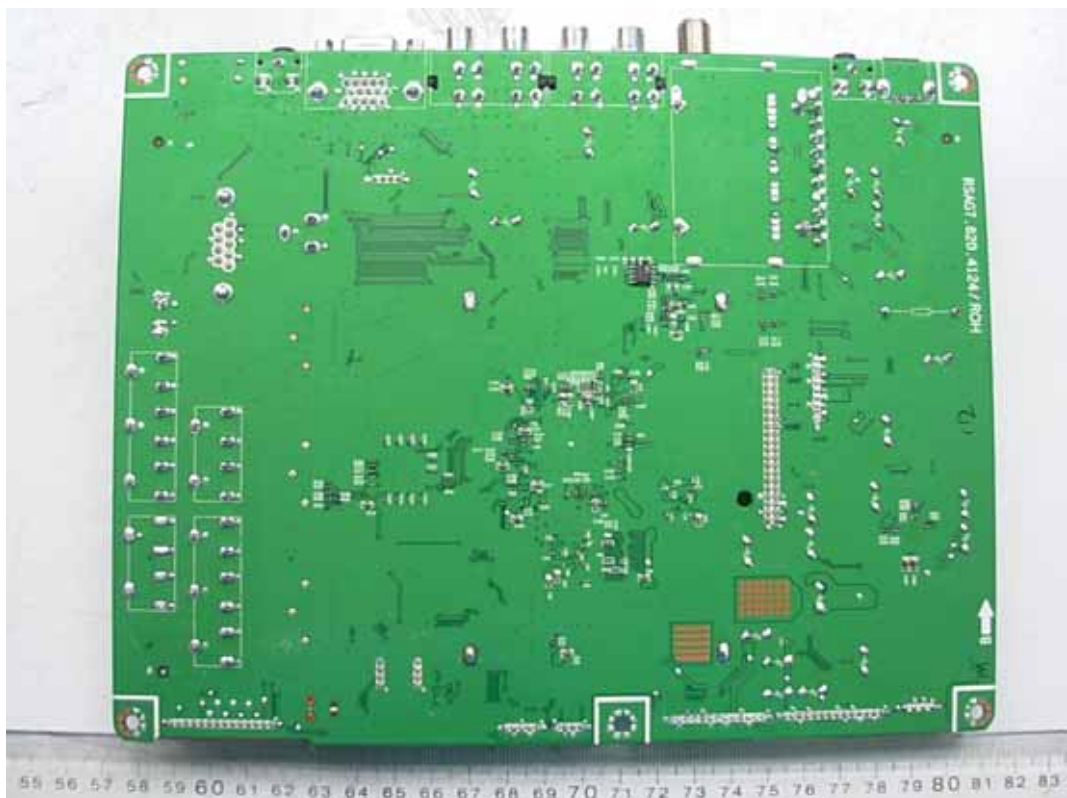


FIGURE 8
LCD TV (M/N: LTDN26W60HS)
CHIP #2 ON MAIN BOARD



FIGURE 9
LCD TV (M/N: LTDN26W60HS)
KEY BOARD (COMPONENT SIDE)

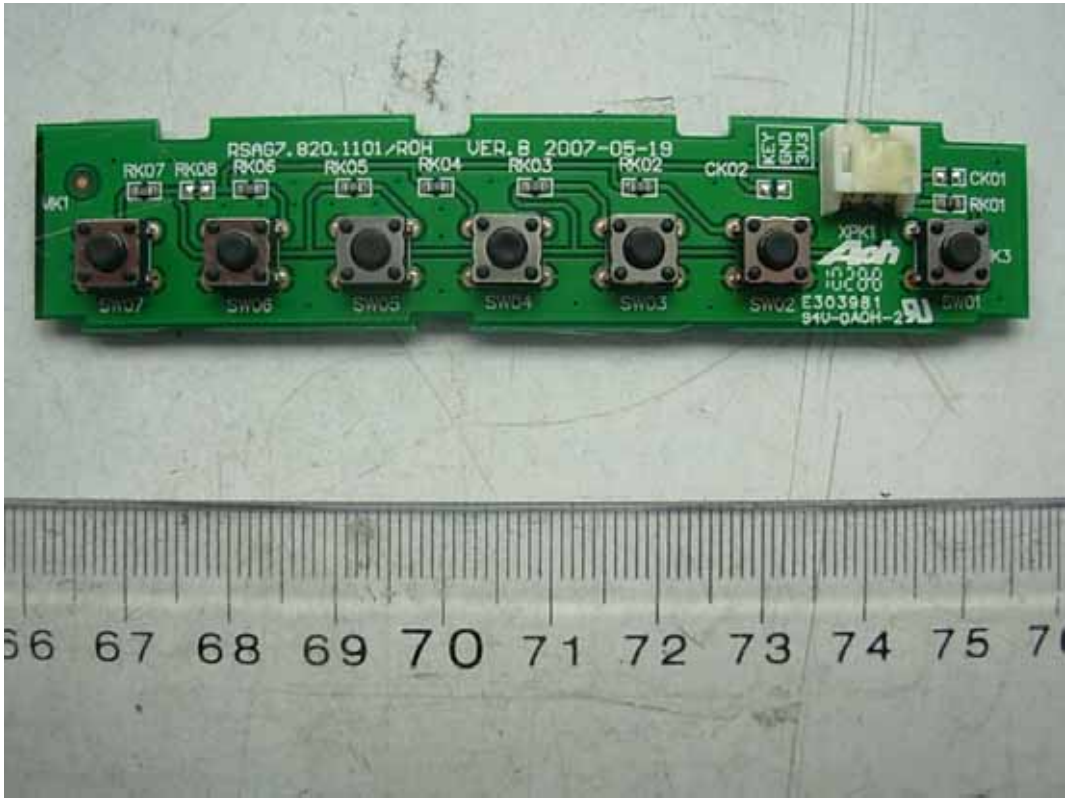


FIGURE 10
LCD TV (M/N: LTDN26W60HS)
KEY BOARD (COMPONENT SIDE)

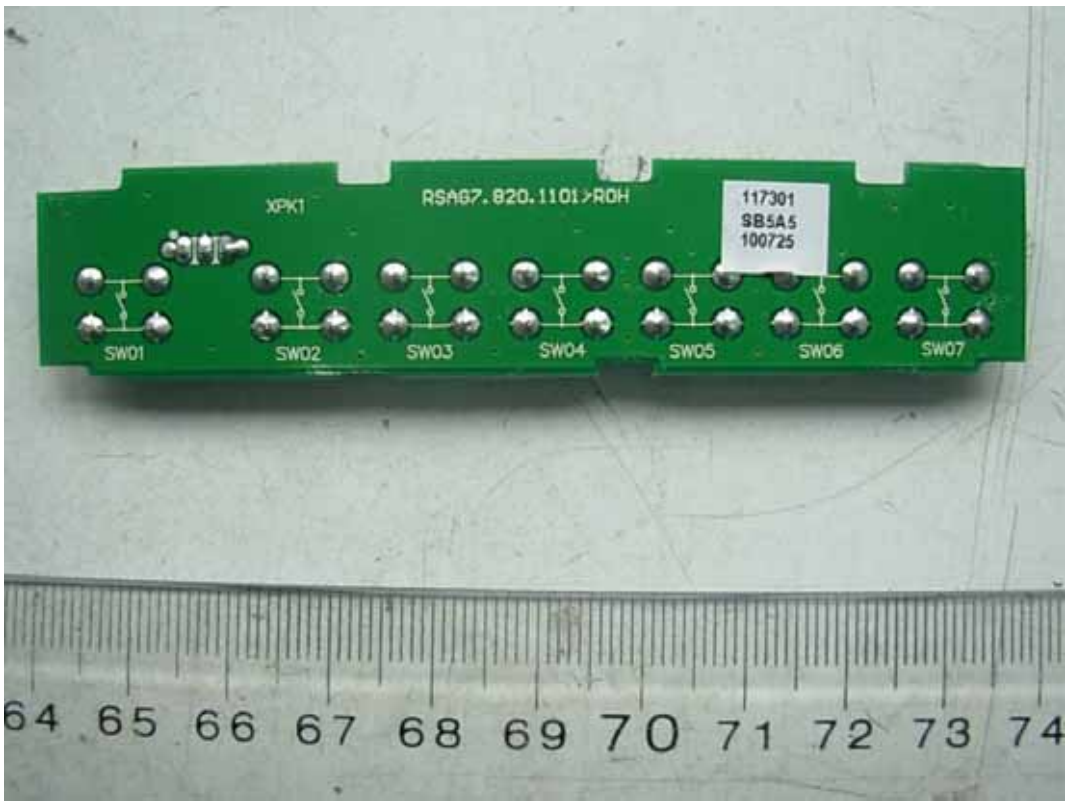


FIGURE 11
LCD TV (M/N: LTDN26W60HS)
IR BOARD (COMPONENT SIDE)

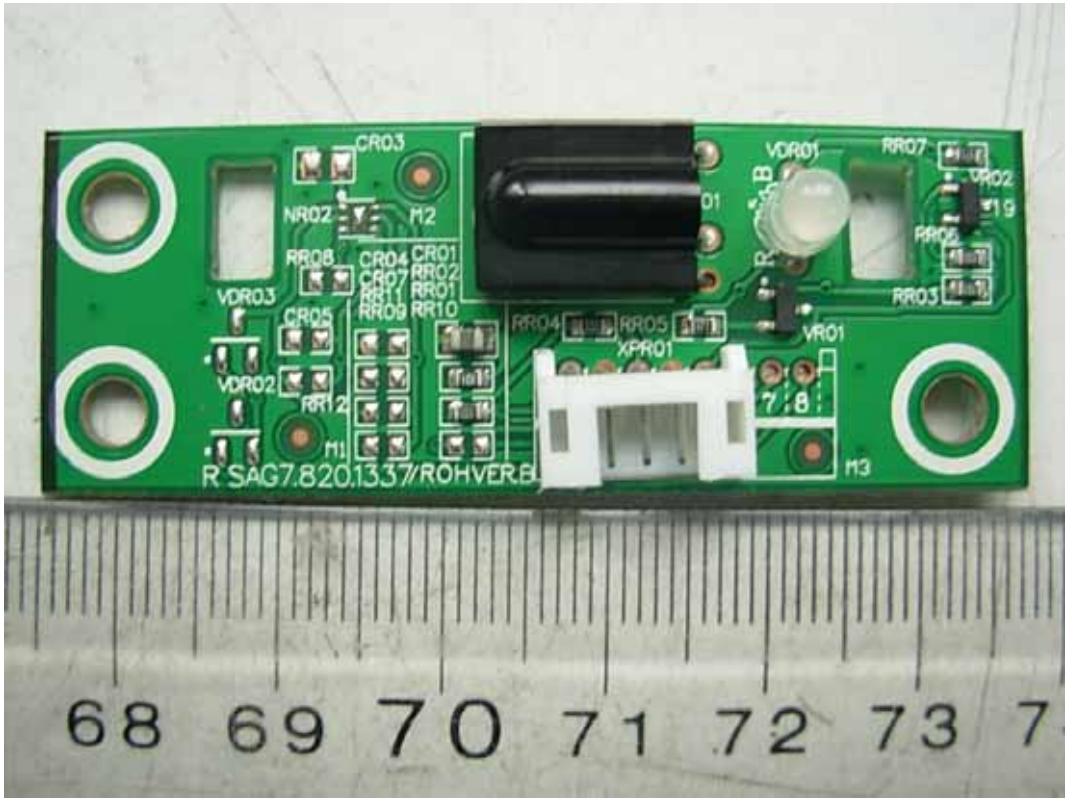


FIGURE 12
LCD TV (M/N: LTDN26W60HS)
IR BOARD (COMPONENT SIDE)

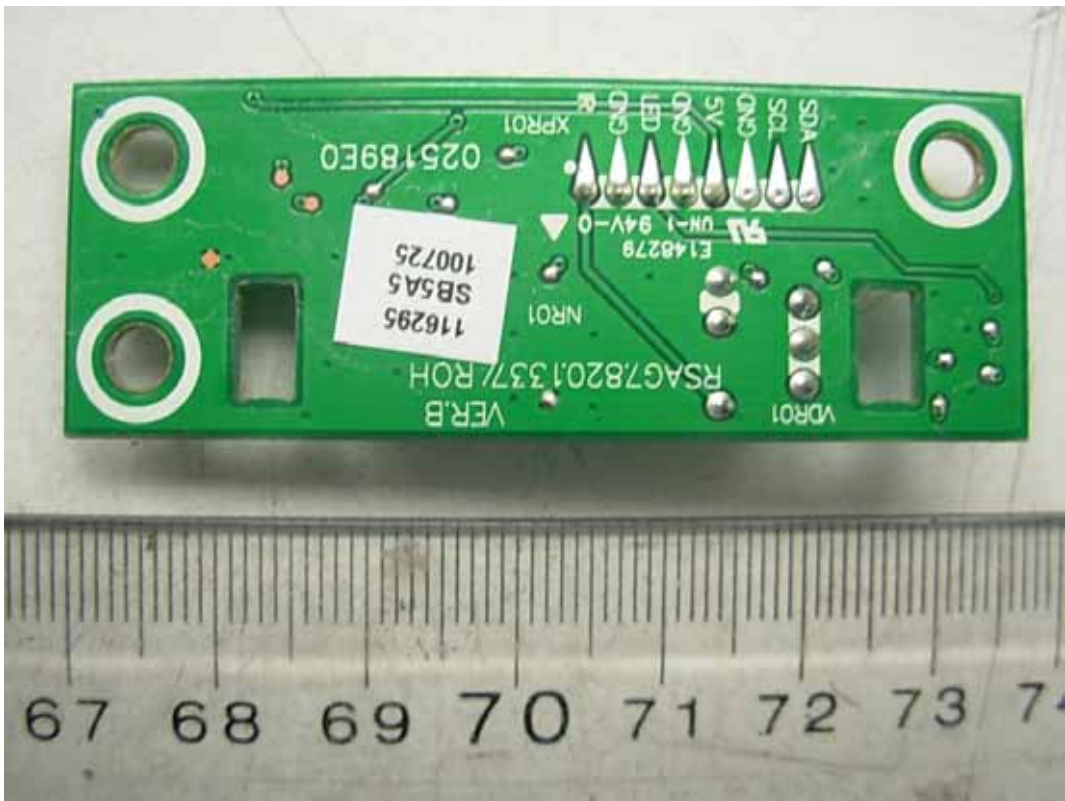


FIGURE 15
LCD TV (M/N: LTDN26W60HS)
DEBUG #1

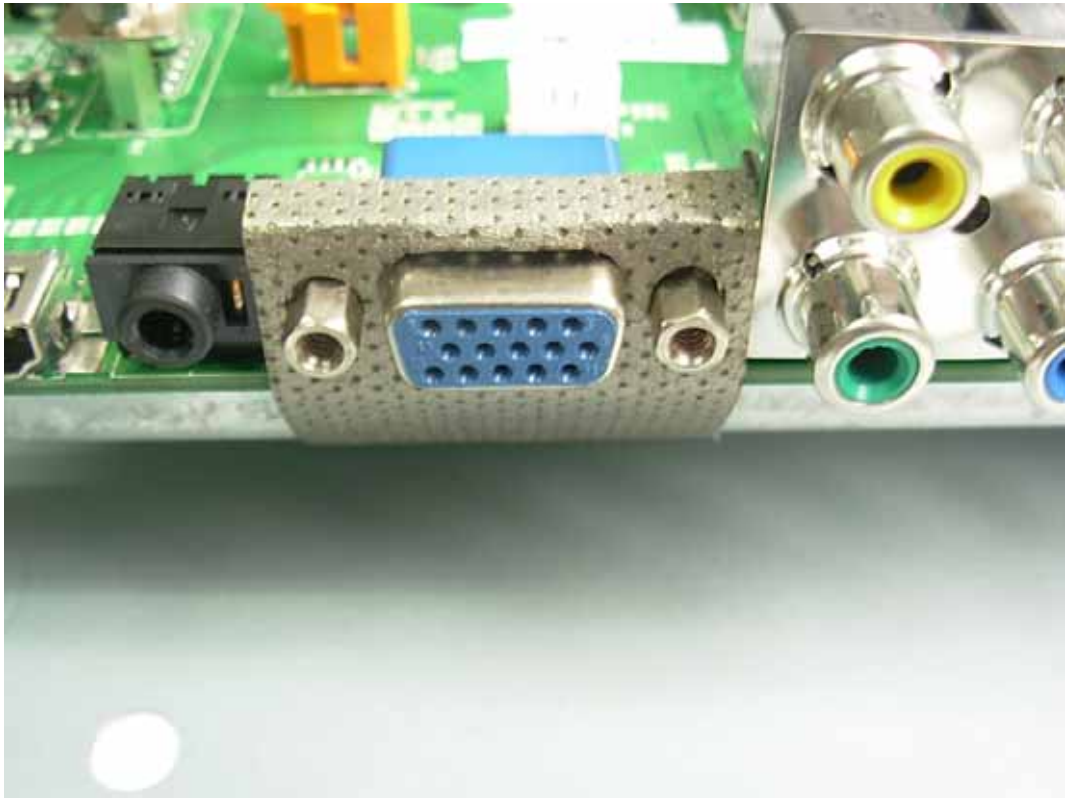


FIGURE 16
LCD TV (M/N: LTDN26W60HS)
DEBUG #2

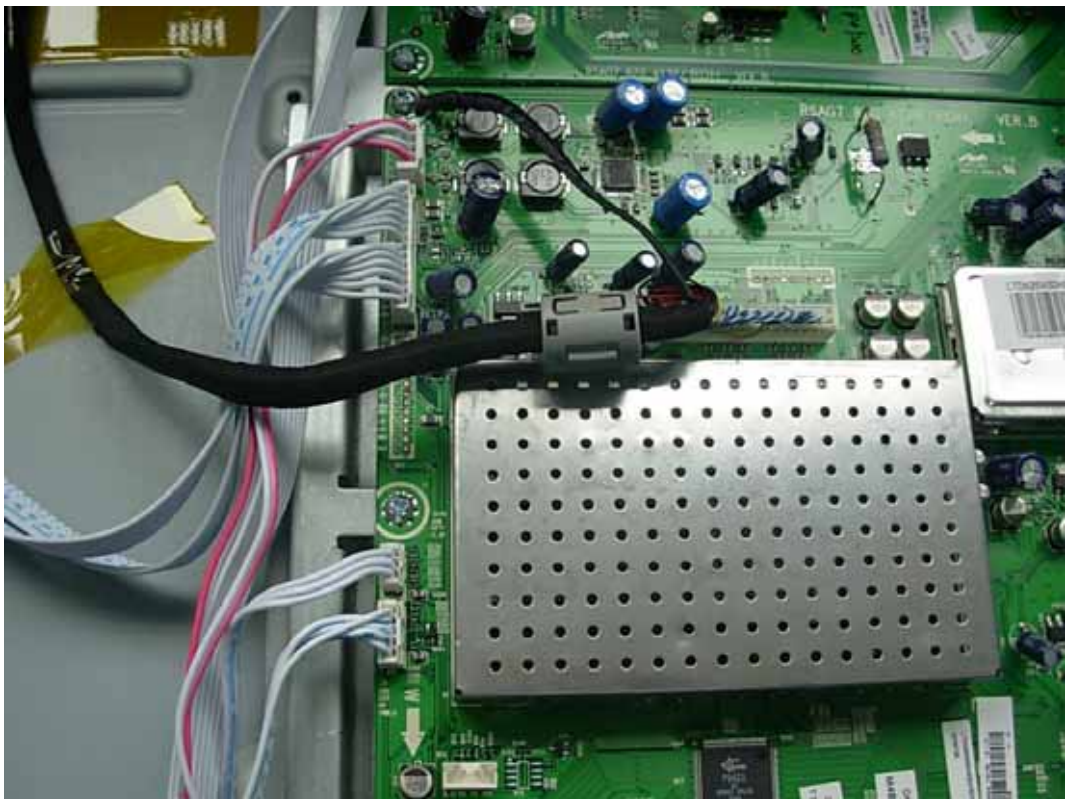


FIGURE 17
LCD TV (M/N: LTDN26W60HS)
DEBUG #3

