

FIGURE 1
LCD TV (M/N: ELCHS262)
COVER REMOVED

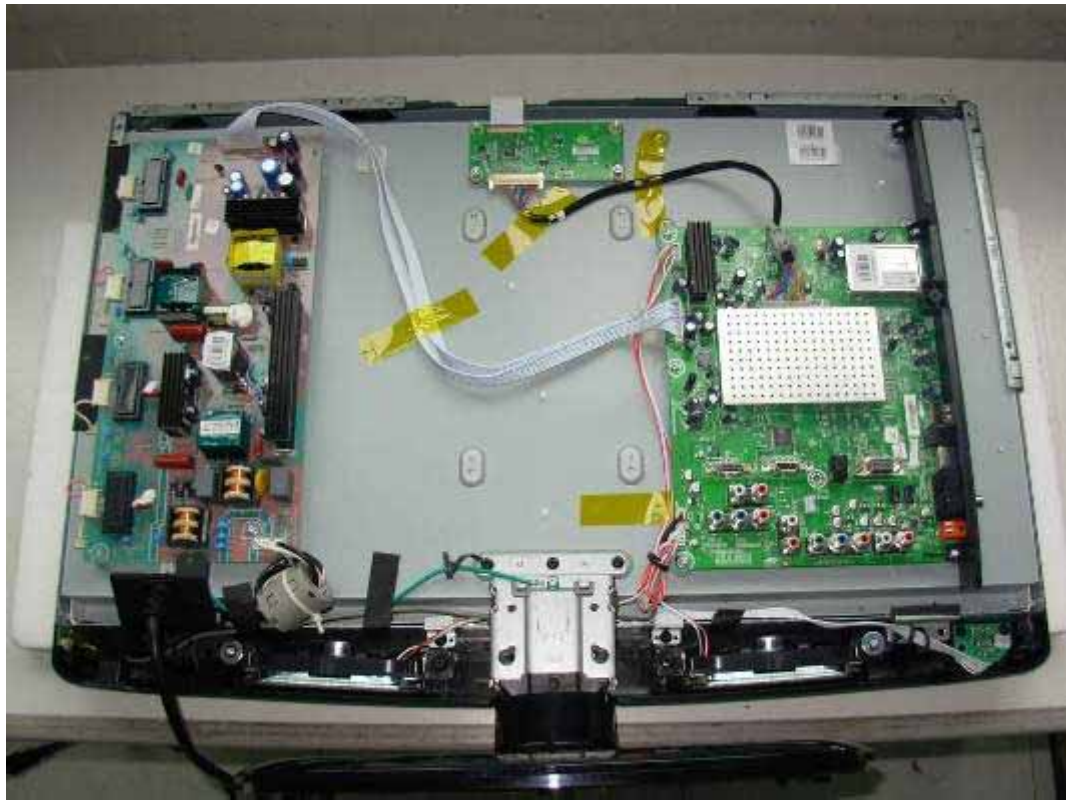


FIGURE 3
LCD TV (M/N: ELCHS262)
MAIN BOARD (COMPONENT SIDE)

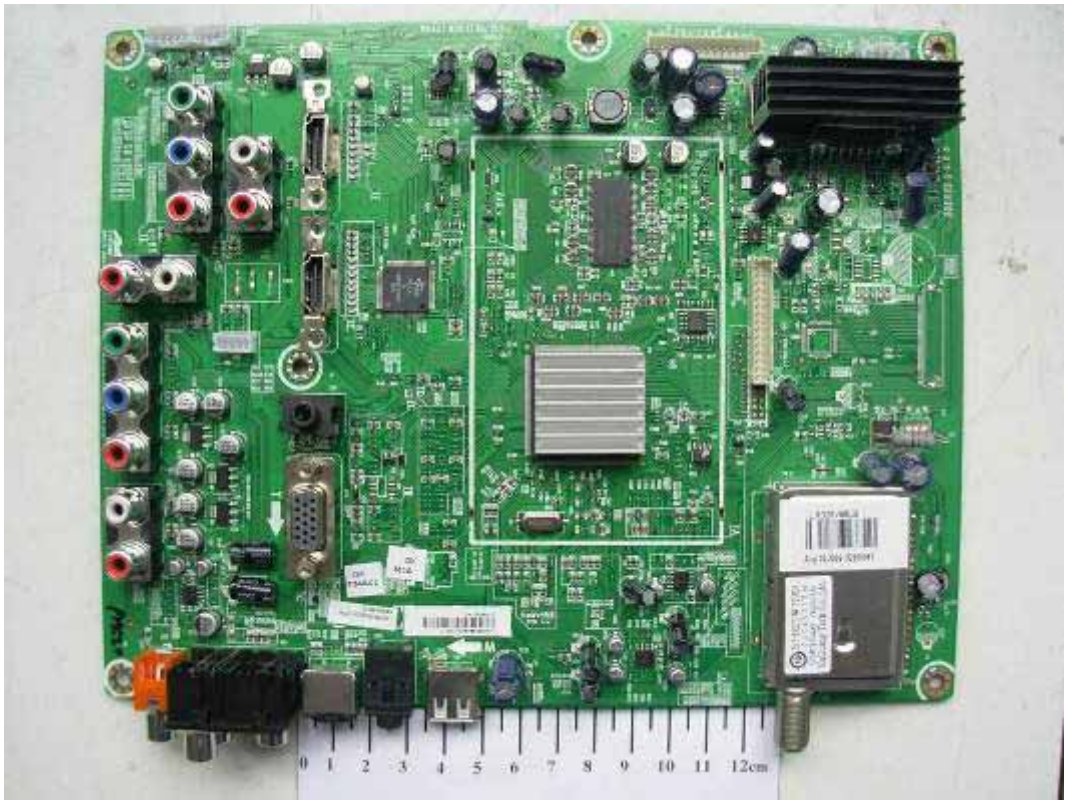


FIGURE 4
LCD TV (M/N: ELCHS262)
MAIN BOARD (SOLDERED SIDE)

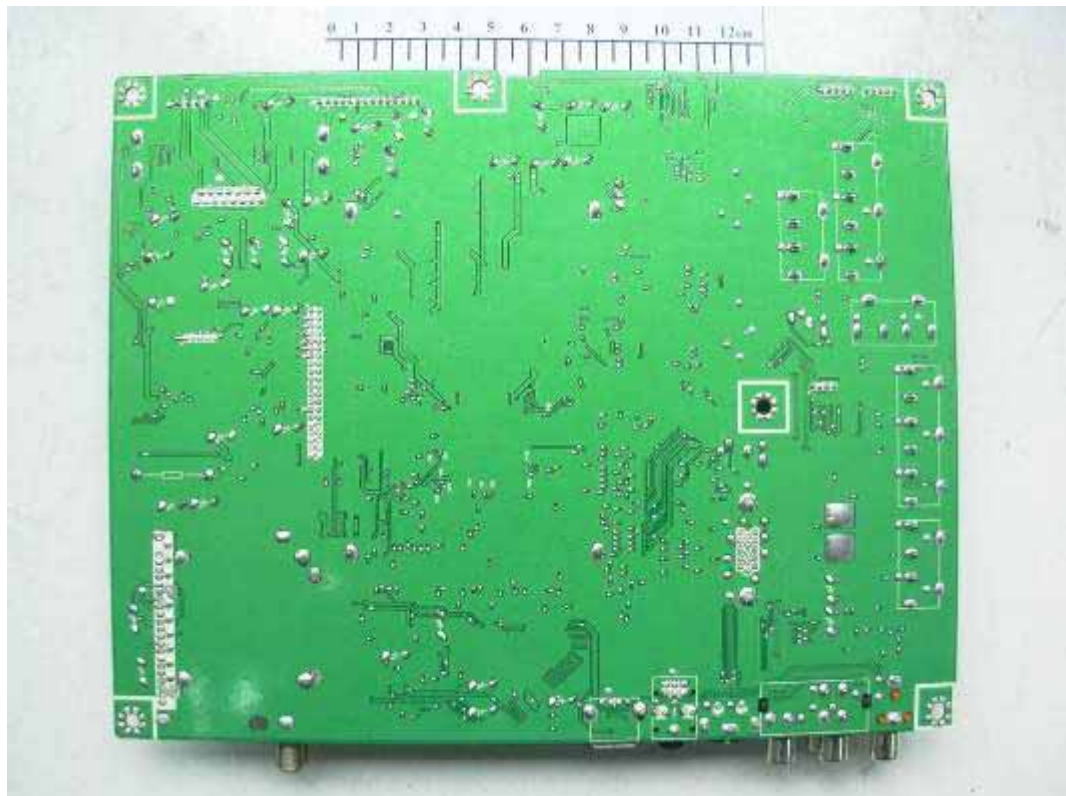


FIGURE 5
LCD TV (M/N: ELCHS262)
CHIP ON MAIN BOARD



FIGURE 6
LCD TV (M/N: ELCHS262)
CRYSTAL ON MAIN BOARD



FIGURE 7
LCD TV (M/N: ELCHS262)
TUNER



FIGURE 8
LCD TV (M/N: ELCHS262)
LABEL ON TUNER



FIGURE 9
LCD TV (M/N: ELCHS262)
POWER BOARD (COMPONENT SIDE)

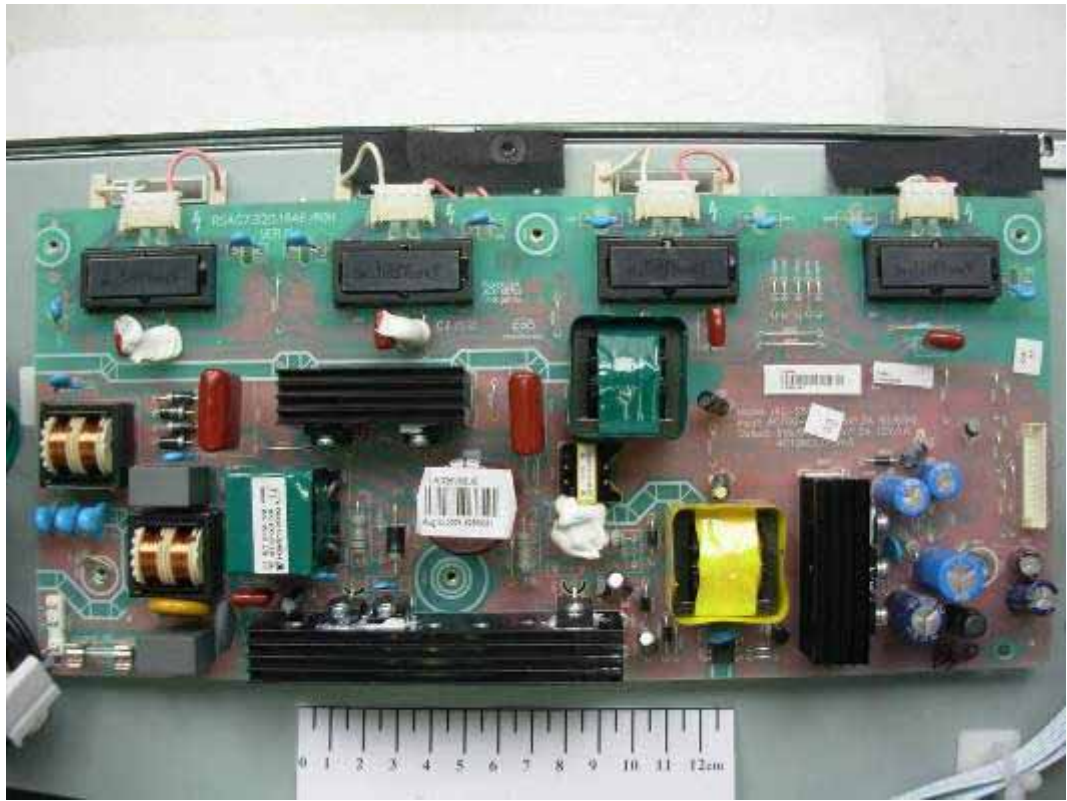


FIGURE 10
LCD TV (M/N: ELCHS262)
POWER BOARD (SOLDERED SIDE)

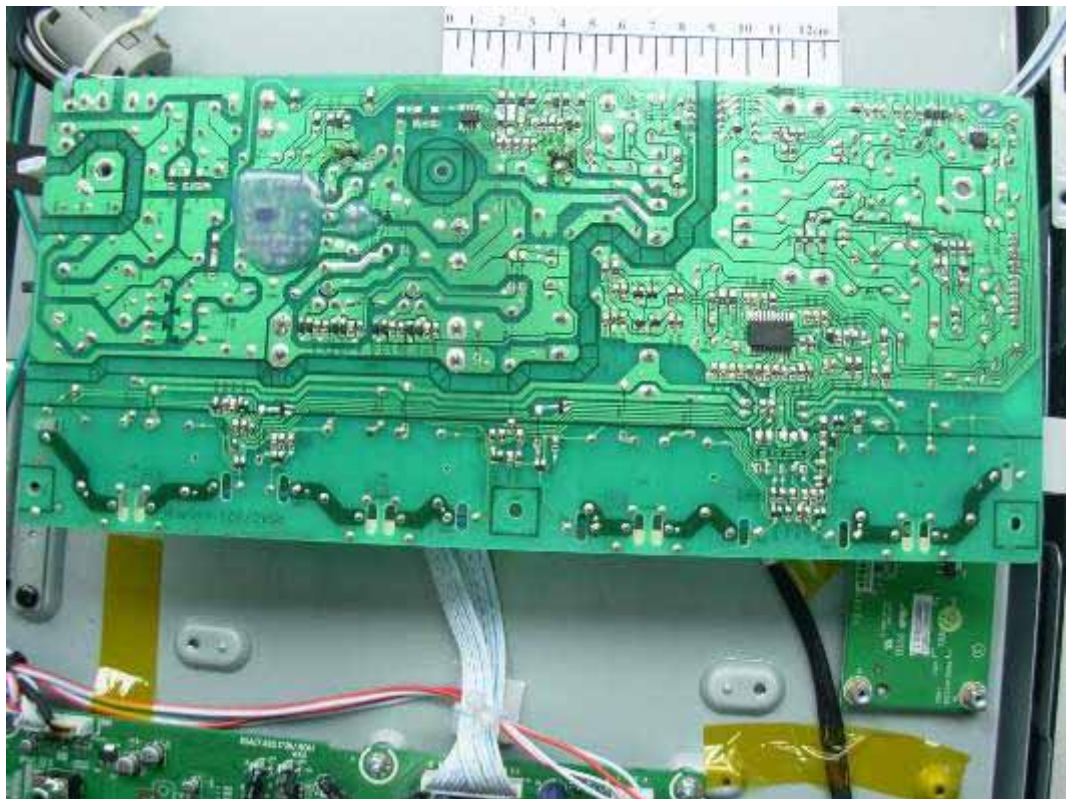


FIGURE 11
LCD TV (M/N: ELCHS262)
LED BOARD (COMPONENT SIDE)

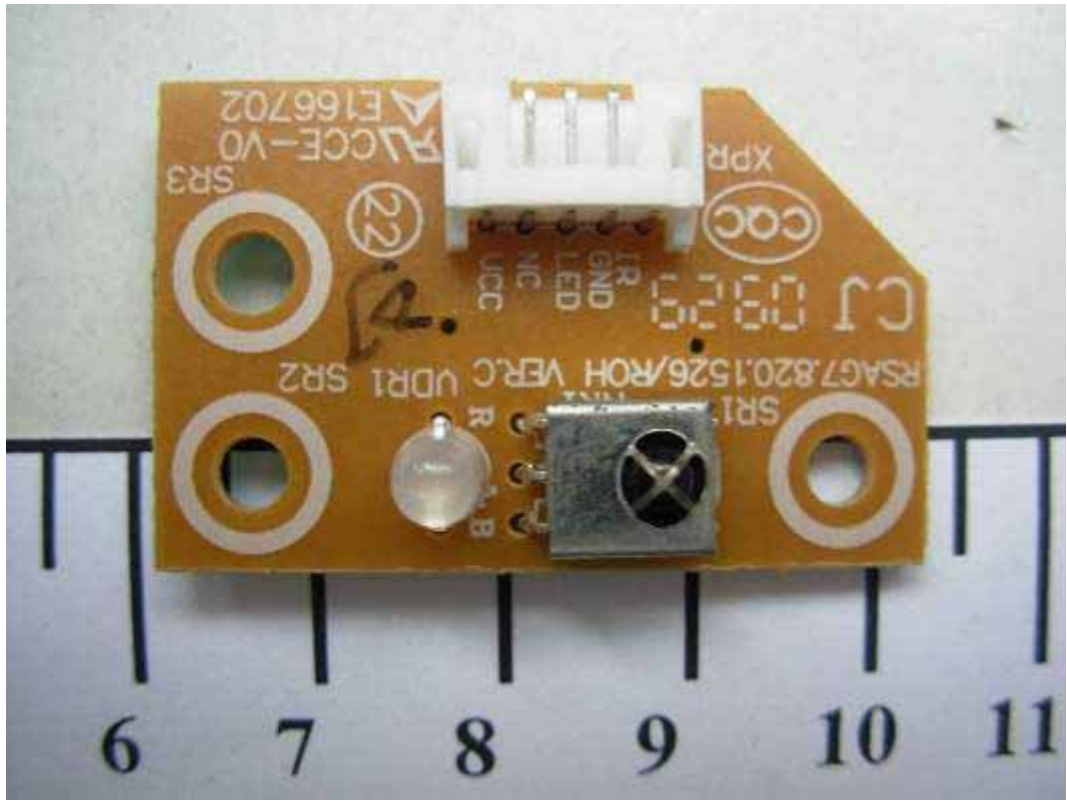


FIGURE 12
LCD TV (M/N: ELCHS262)
LED BOARD (SOLDERED SIDE)

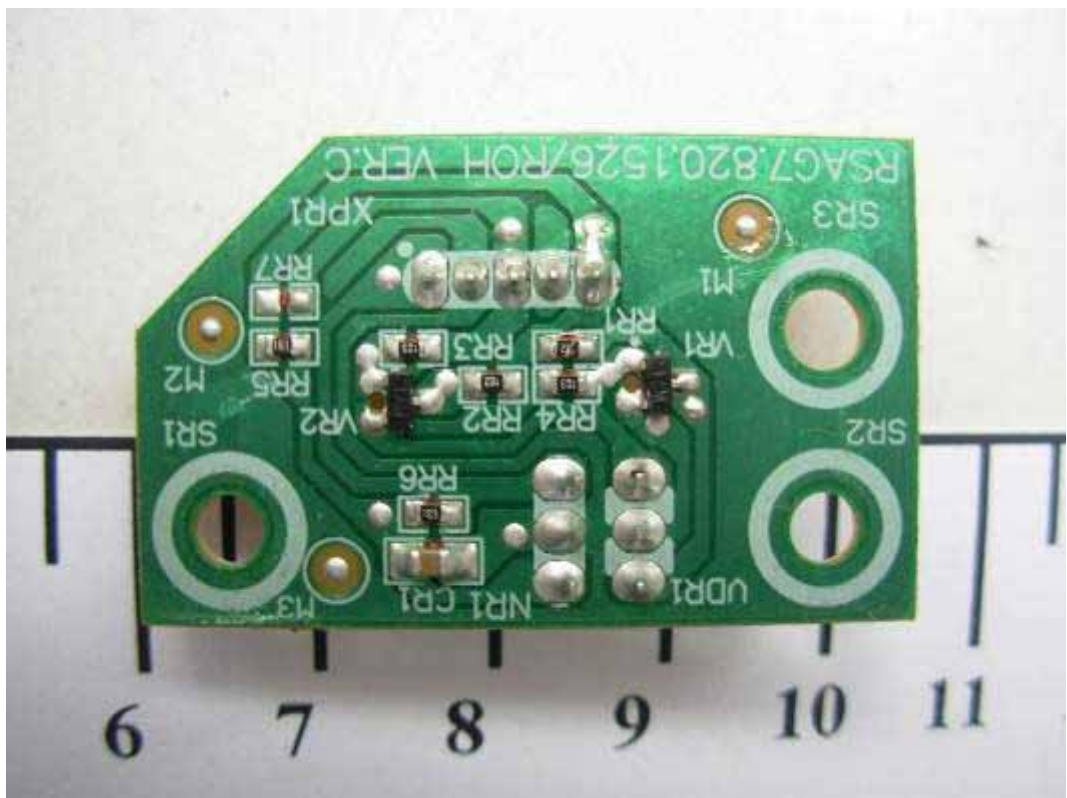


FIGURE 13
LCD TV (M/N: ELCHS262)
KEY BOARD (COMPONENT SIDE)

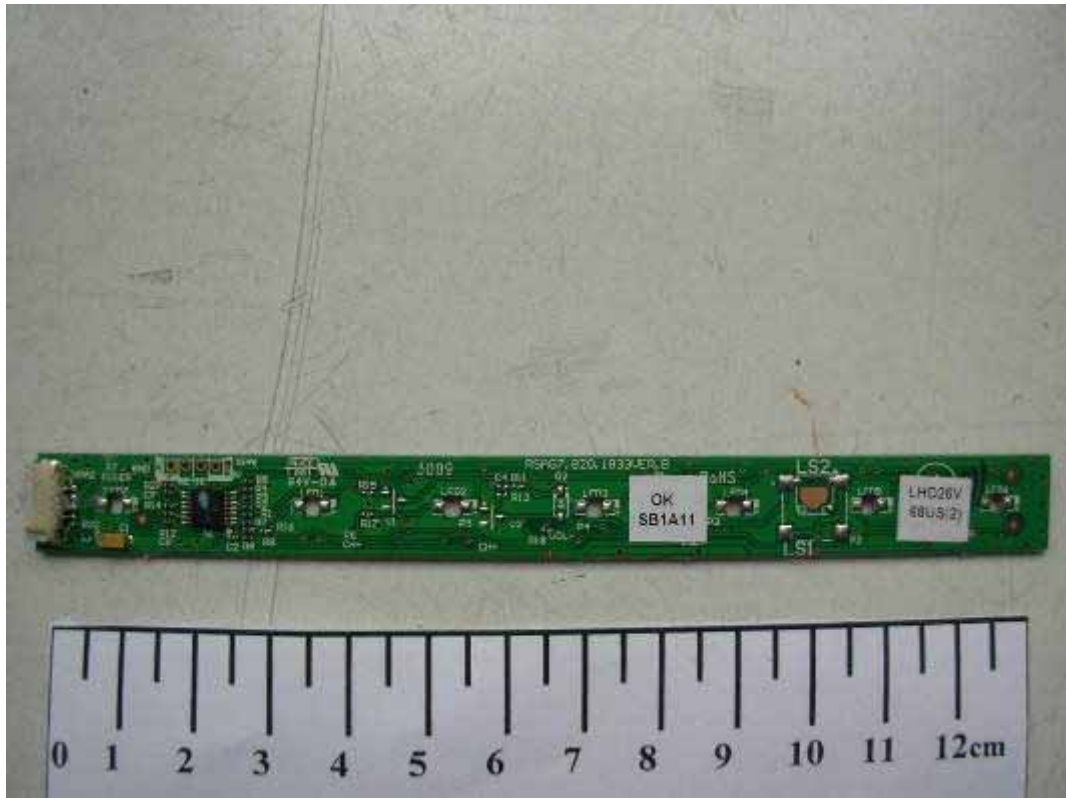


FIGURE 14
LCD TV (M/N: ELCHS262)
KEY BOARD (SOLDERED SIDE)



FIGURE 15
LCD TV (M/N: ELCHS262)
LABEL #1 ON PANEL



FIGURE 16
LCD TV (M/N: ELCHS262)
LABEL #2 ON PANEL



FIGURE 17
LCD TV (M/N: ELCHS262)
LCD PANEL MAIN BOARD (COMPONENT SIDE)



FIGURE 18
LCD TV (M/N: ELCHS262)
LCD PANEL MAIN BOARD (SOLDERED SIDE)

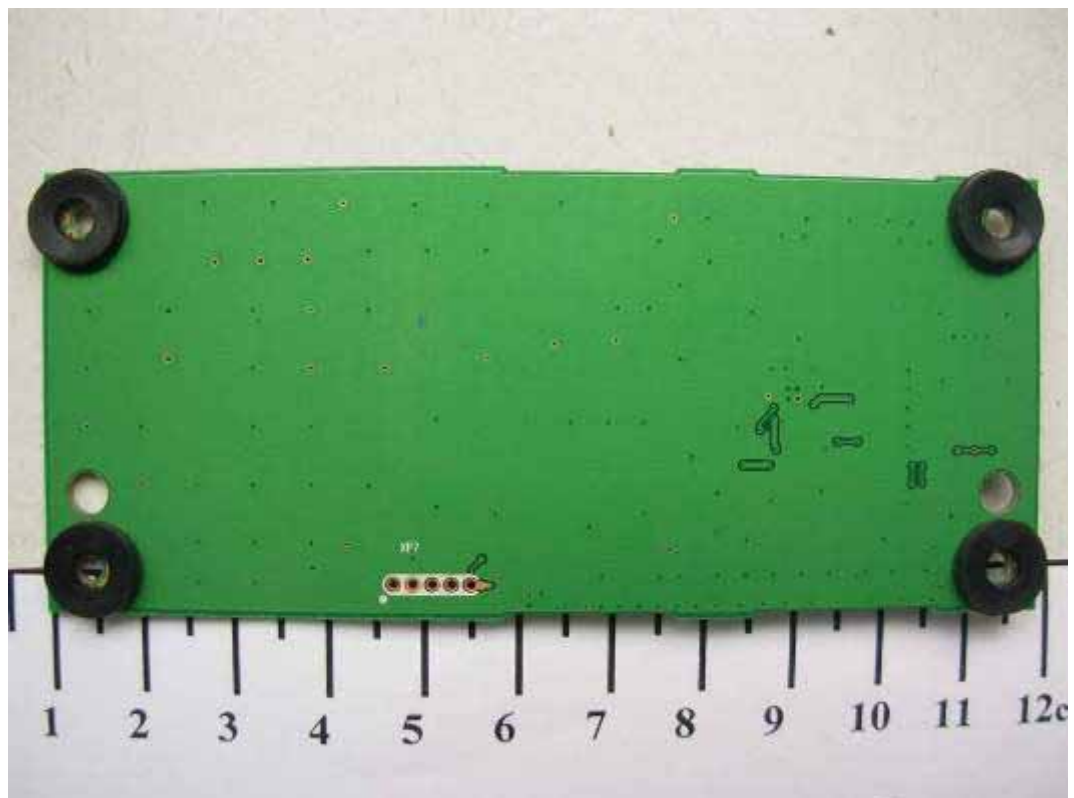


FIGURE 19
LCD TV (M/N: ELCHS262)
CHIP ON LCD PANEL MAIN BOARD



FIGURE 20
LCD TV (M/N: ELCHS262)
DEBUG 1

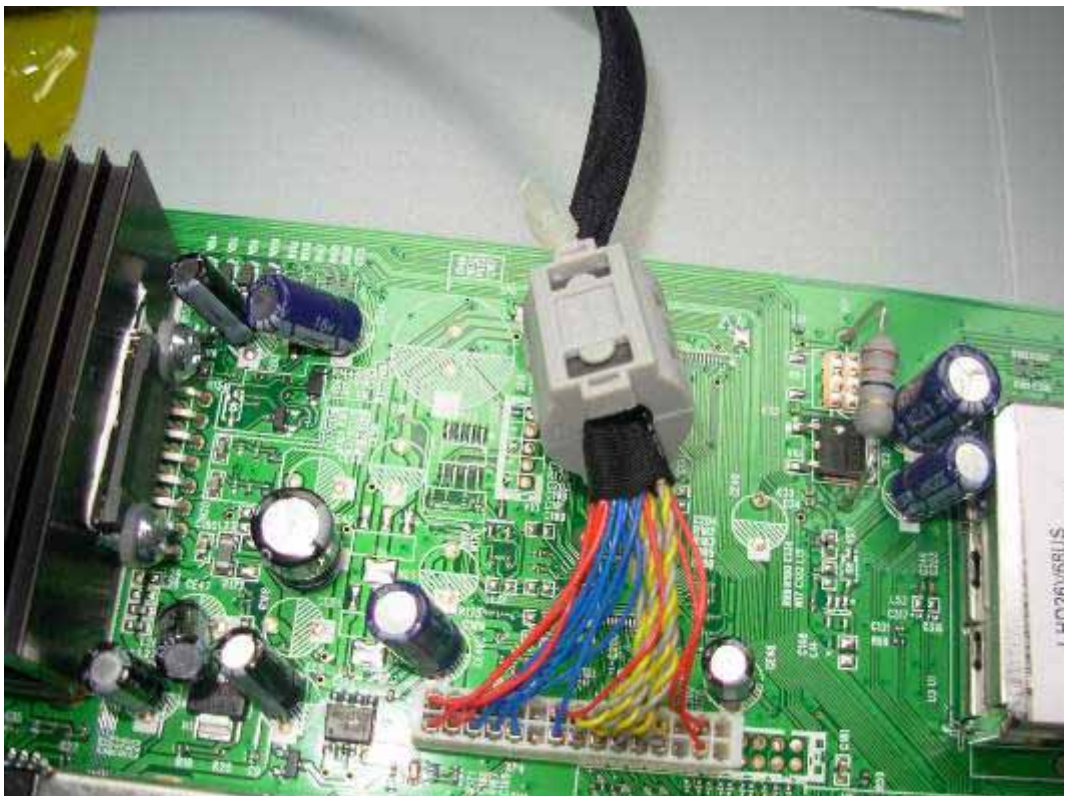


FIGURE 21
LCD TV (M/N: ELCHS262)
DEBUG 2

