

FIGURE 1
LED LCD TV (M/N: LHD23A300US)
COVER REMOVED



FIGURE 2
LED LCD TV (M/N: LHD23A300US)
PANEL LABEL



FIGURE 3
LED LCD TV (M/N: LHD23A300US)
POWER BOARD (COMPONENT SIDE)



FIGURE 4
LED LCD TV (M/N: LHD23A300US)
POWER BOARD (SOLDERED SIDE)



FIGURE 5
LED LCD TV (M/N: LHD23A300US)
MAIN BOARD (COMPONENT SIDE)



FIGURE 6
LED LCD TV (M/N: LHD23A300US)
MAIN BOARD (SOLDERED SIDE)



FIGURE 7
LED LCD TV (M/N: LHD23A300US)
TUNER ON MAIN BOARD



FIGURE 8
LED LCD TV (M/N: LHD23A300US)
CHIP & CRYSTAL ON MAIN BOARD



FIGURE 9
LED LCD TV (M/N: LHD23A300US)
IR BOARD (COMPONENT SIDE)



FIGURE 10
LED LCD TV (M/N: LHD23A300US)
IR BOARD (SOLDERED SIDE)



FIGURE 11
LED LCD TV (M/N: LHD23A300US)
LCD PANEL CONTROL BOARD (COMPONENT SIDE)



FIGURE 12
LED LCD TV (M/N: LHD23A300US)
LCD PANEL CONTROL BOARD (COMPONENT SIDE)



FIGURE 13
LED LCD TV (M/N: LHD23A300US)
LCD PANEL CONTROL BOARD (SOLDERED SIDE)



FIGURE 14
LED LCD TV (M/N: LHD23A300US)
LCD PANEL CONTROL BOARD (SOLDERED SIDE)



FIGURE 15
LED LCD TV (M/N: LHD23A300US)
DEBUG #1

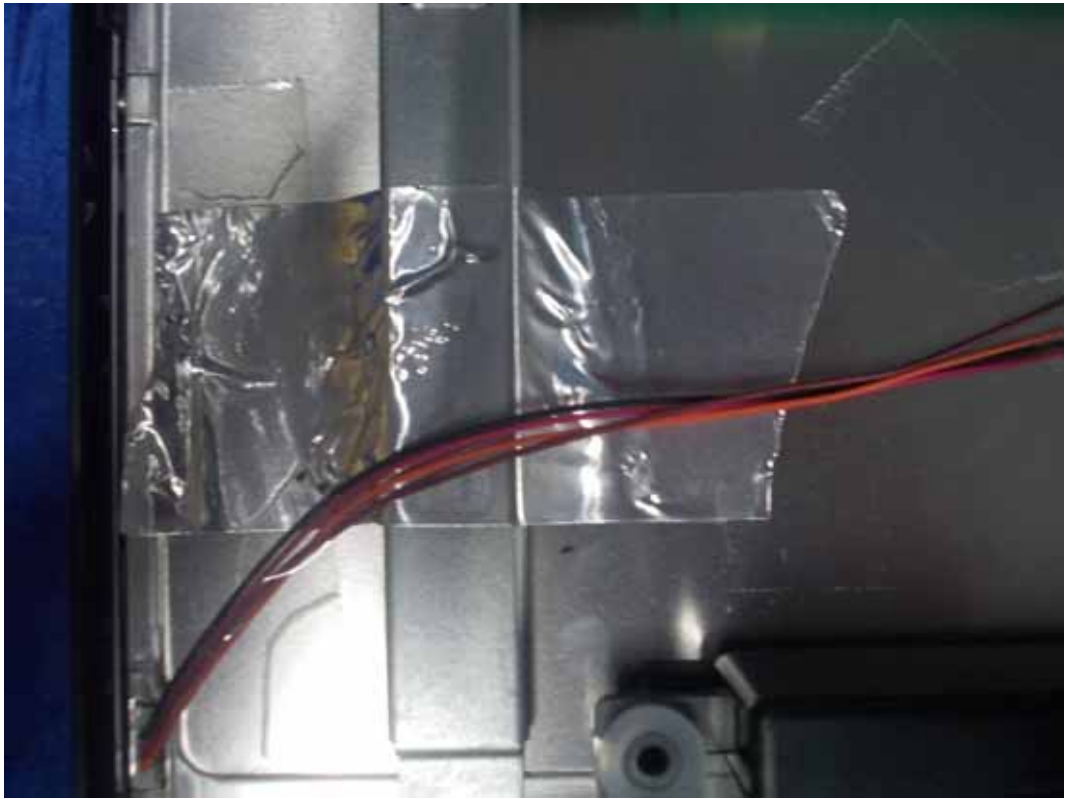


FIGURE 16
LED LCD TV (M/N: LHD23A300US)
DEBUG #2



FIGURE 17
LED LCD TV (M/N: LHD23A300US)
DEBUG #3

