

FIGURE 3  
BT remote (M/N: ERF6A60)  
COVER REMOVED

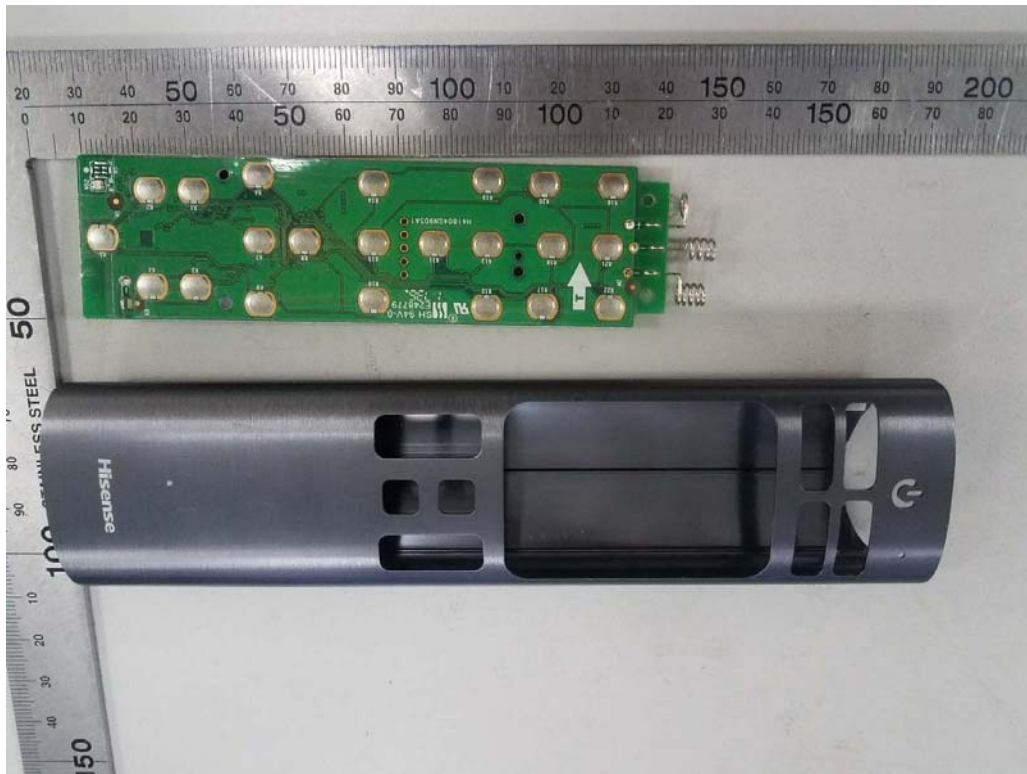
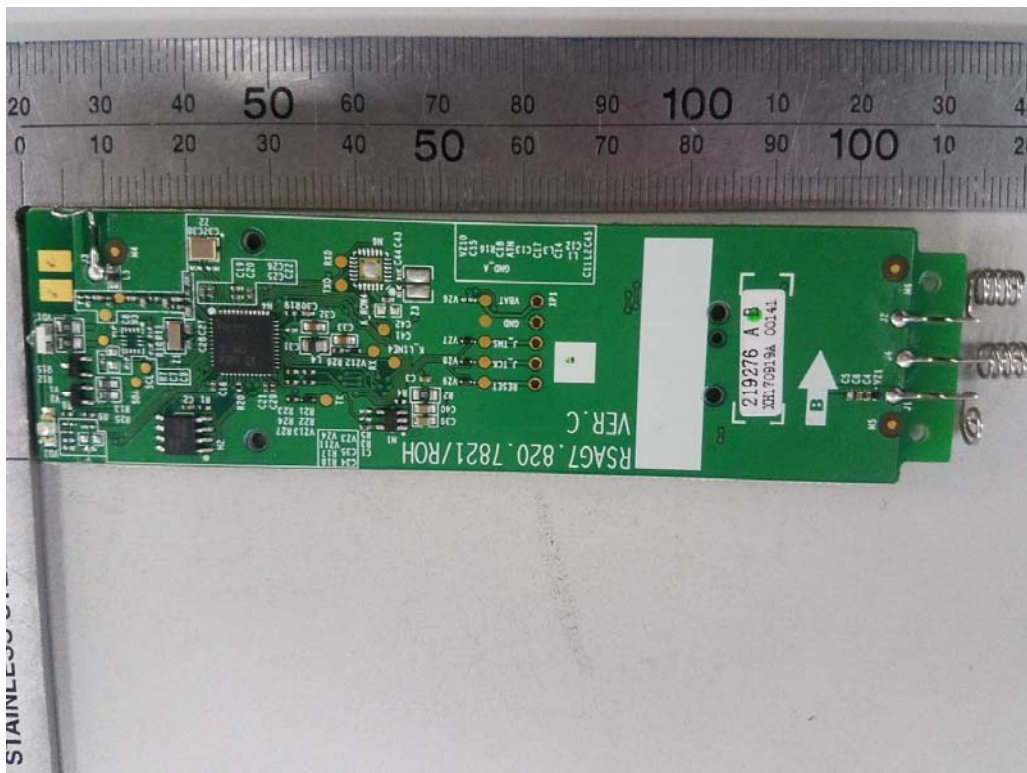
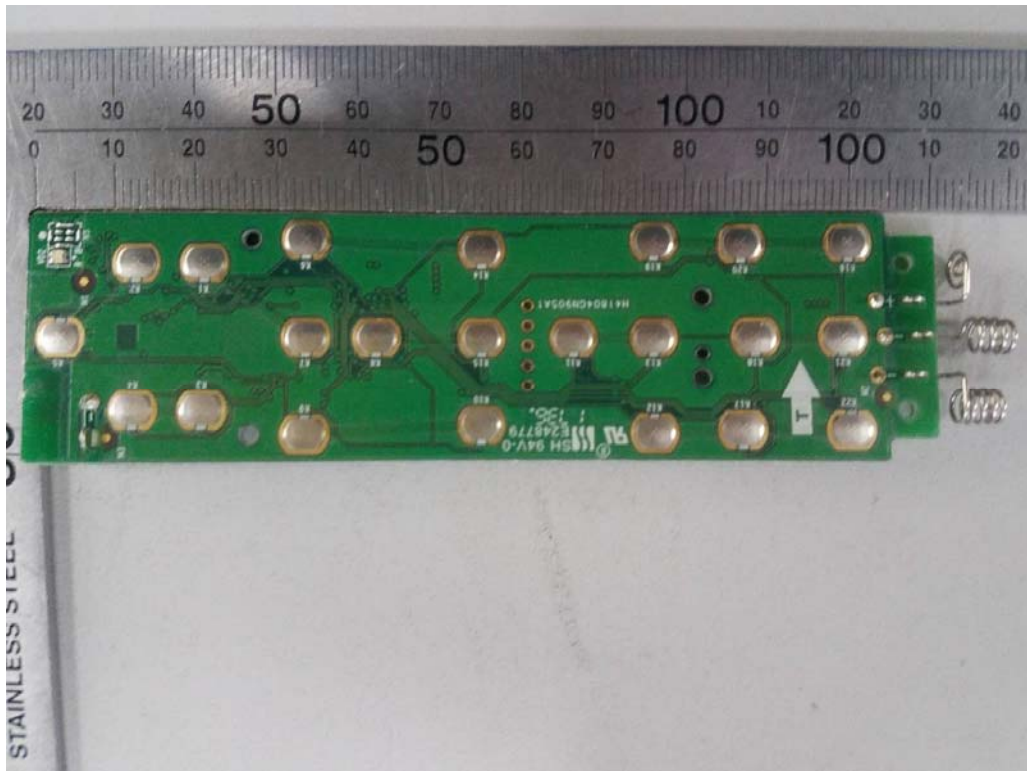


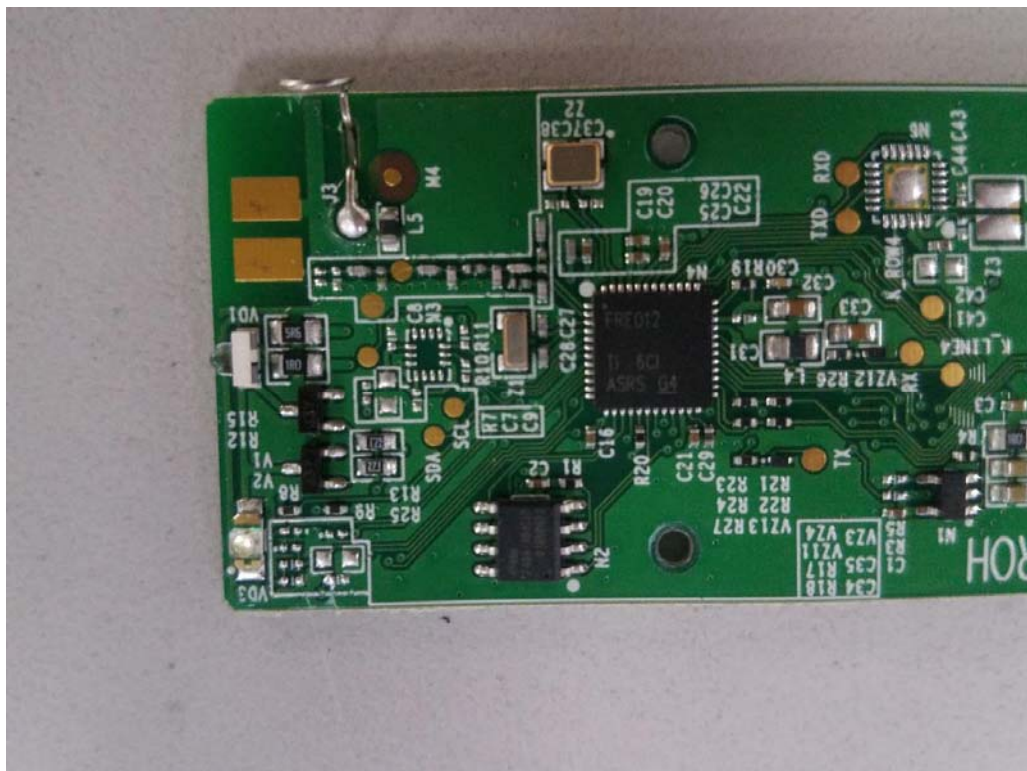
FIGURE 4  
BT remote (M/N: ERF6A60)  
MAIN BOARD (COMPONENT SIDE)



*FIGURE 5*  
BT remote (M/N: ERF6A60)  
MAIN BOARD (SOLDERED SIDE)



*FIGURE 6*  
BT remote (M/N: ERF6A60)  
CHIP & CRYSTAL ON MAIN BOARD



*FIGURE 7*  
BT remote (M/N: ERF6A60)  
ANTENNA

