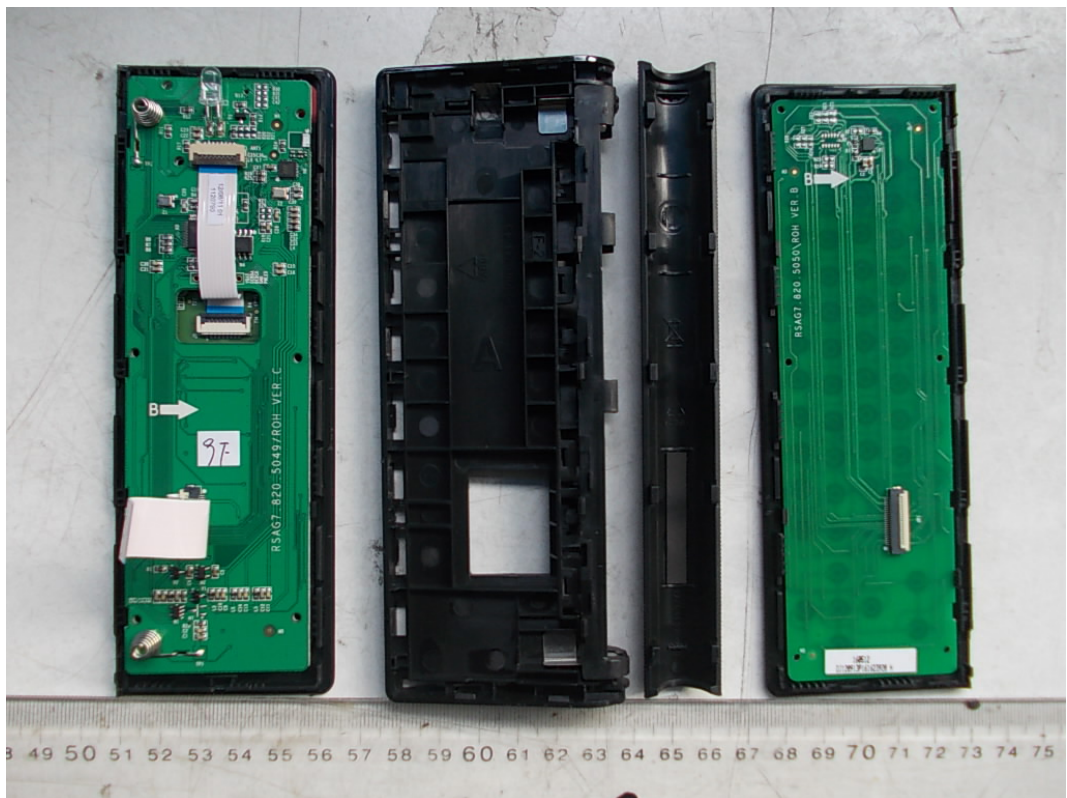


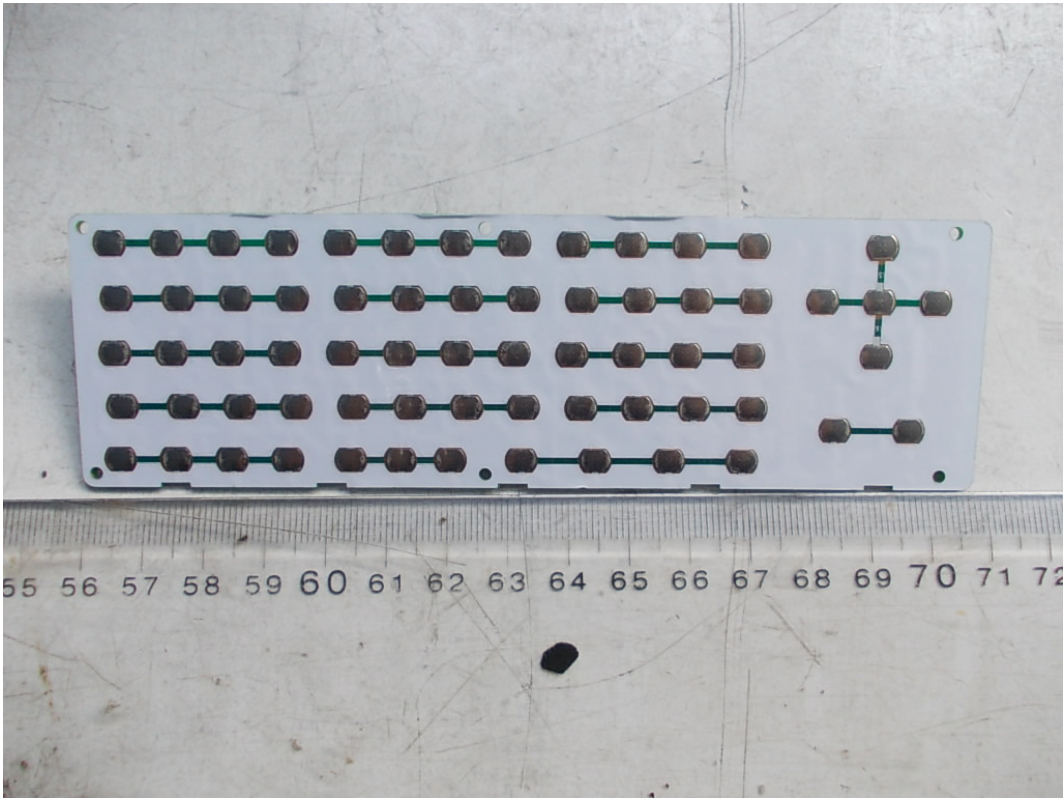
*FIGURE 1
HISENSE PULSE WITH GOOGLE TV REMOTE CONTROL (M/N: ERF6B10)
BATTERY COVER REMOVED*



*FIGURE 2
HISENSE PULSE WITH GOOGLE TV REMOTE CONTROL (M/N: ERF6B10)
COVER REMOVED*



*FIGURE 3
HISENSE PULSE WITH GOOGLE TV REMOTE CONTROL (M/N: ERF6B10)
KEY BOARD (FRONT VIEW)*



*FIGURE 4
HISENSE PULSE WITH GOOGLE TV REMOTE CONTROL (M/N: ERF6B10)
KEY BOARD (BACK VIEW)*

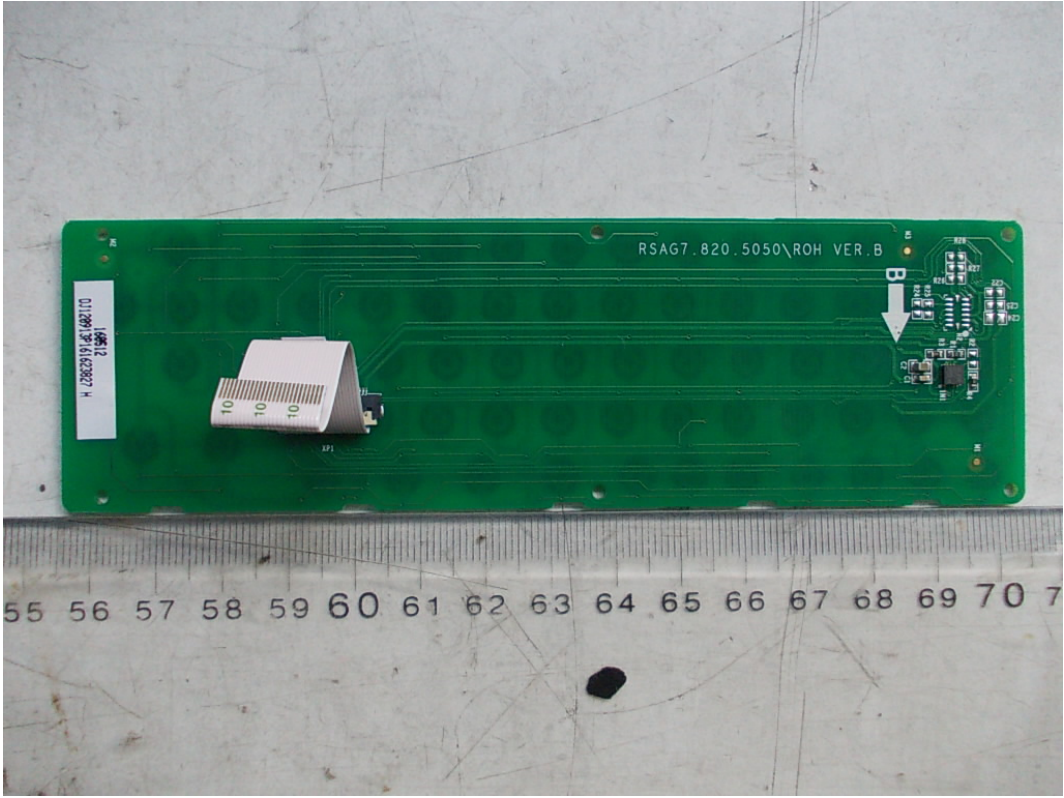


FIGURE 5
HISENSE PULSE WITH GOOGLE TV REMOTE CONTROL (M/N: ERF6B10)
TOUCH BOARD

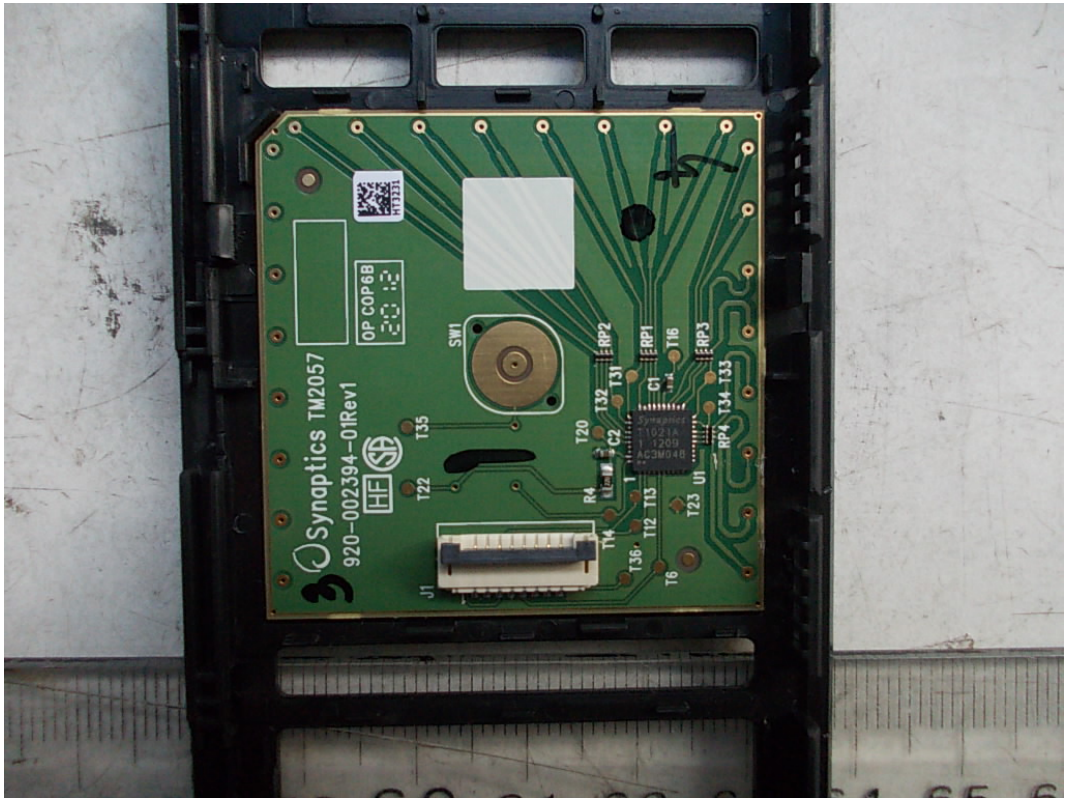


FIGURE 6
HISENSE PULSE WITH GOOGLE TV REMOTE CONTROL (M/N: ERF6B10)
MAIN BOARD (FRONT VIEW)

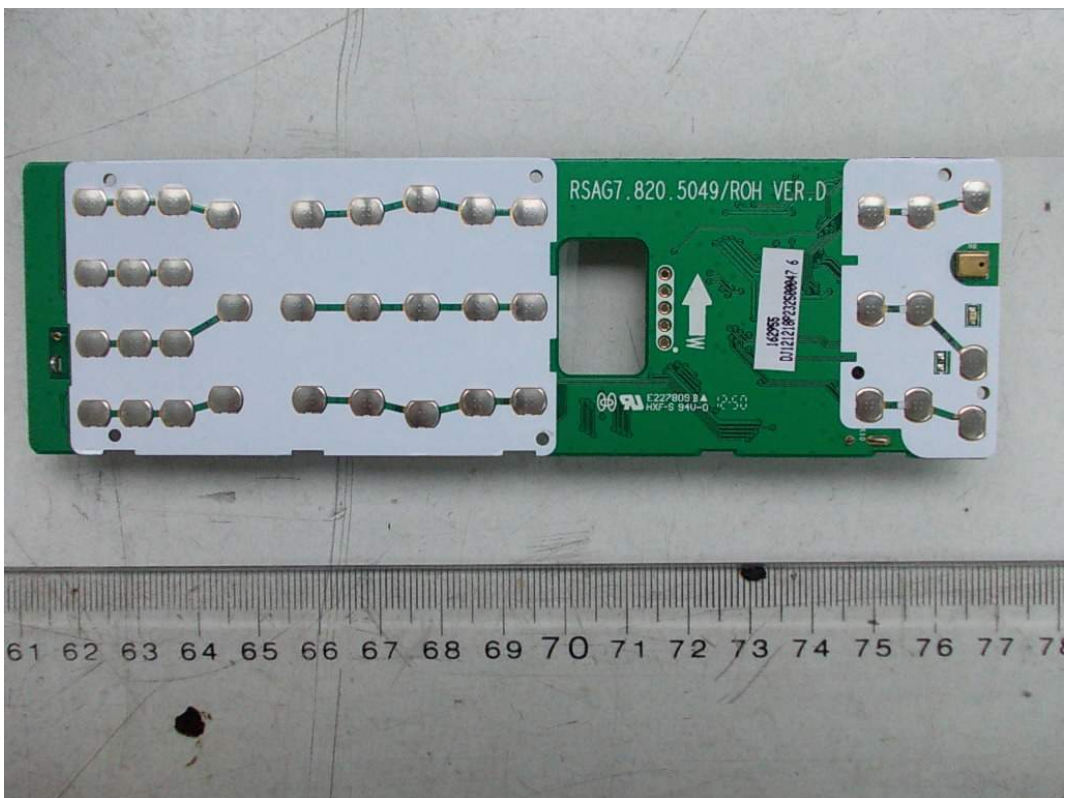


FIGURE 7
HISENSE PULSE WITH GOOGLE TV REMOTE CONTROL (M/N: ERF6B10)
MAIN BOARD (BACK VIEW)

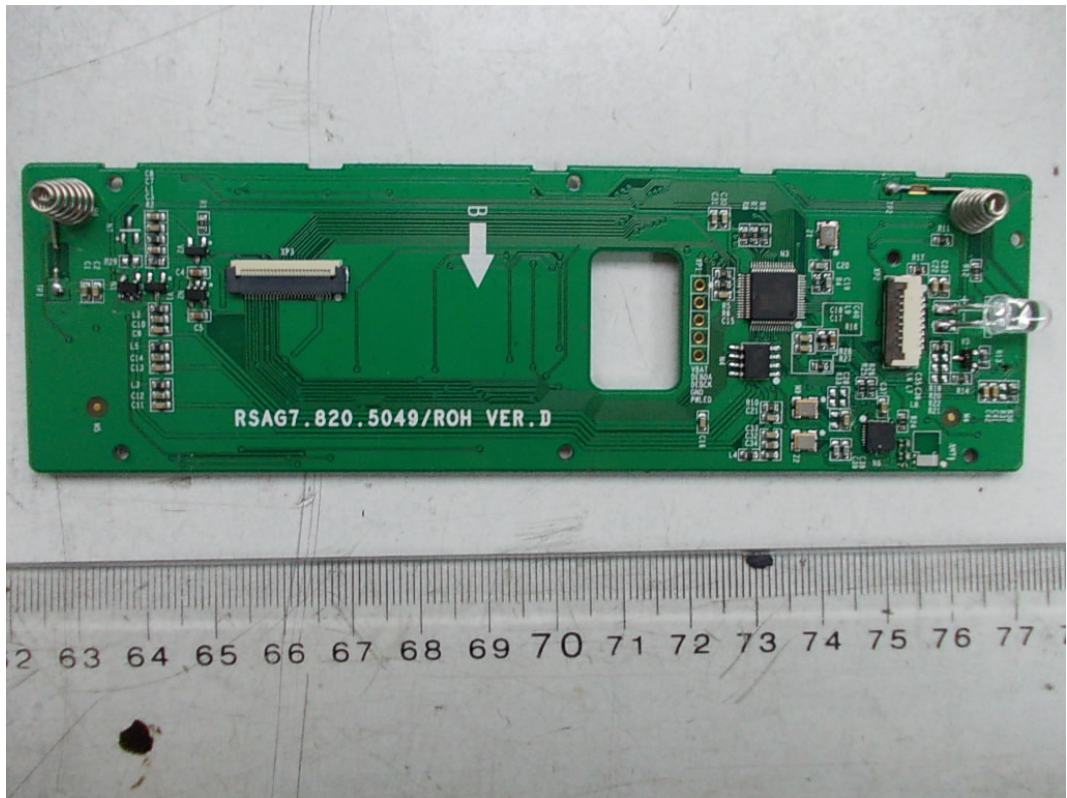


FIGURE 8
HISENSE PULSE WITH GOOGLE TV REMOTE CONTROL (M/N: ERF6B10)
CHIP & CRYSTAL #1 ON MAIN BOARD



FIGURE 9
HISENSE PULSE WITH GOOGLE TV REMOTE CONTROL (M/N: ERF6B10)
CRYSTAL #2 & #3 ON MAIN BOARD

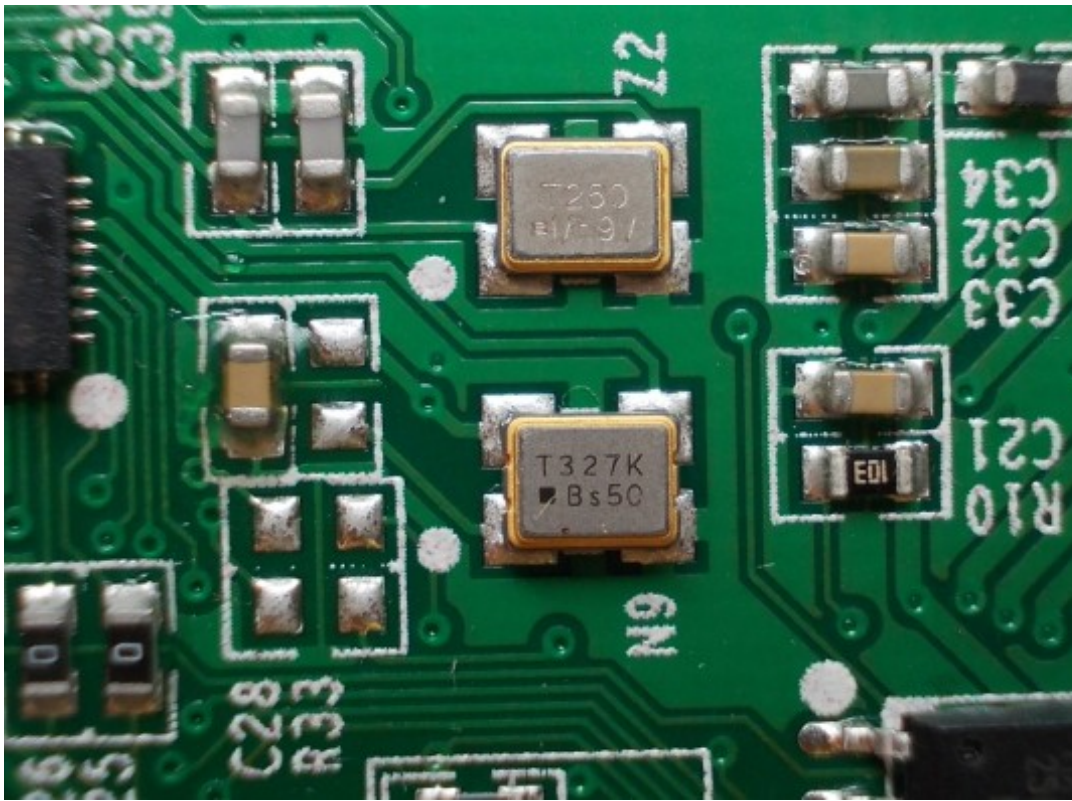


FIGURE 10
HISENSE PULSE WITH GOOGLE TV REMOTE CONTROL (M/N: ERF6B10)
RF PART ON MAIN BOARD

