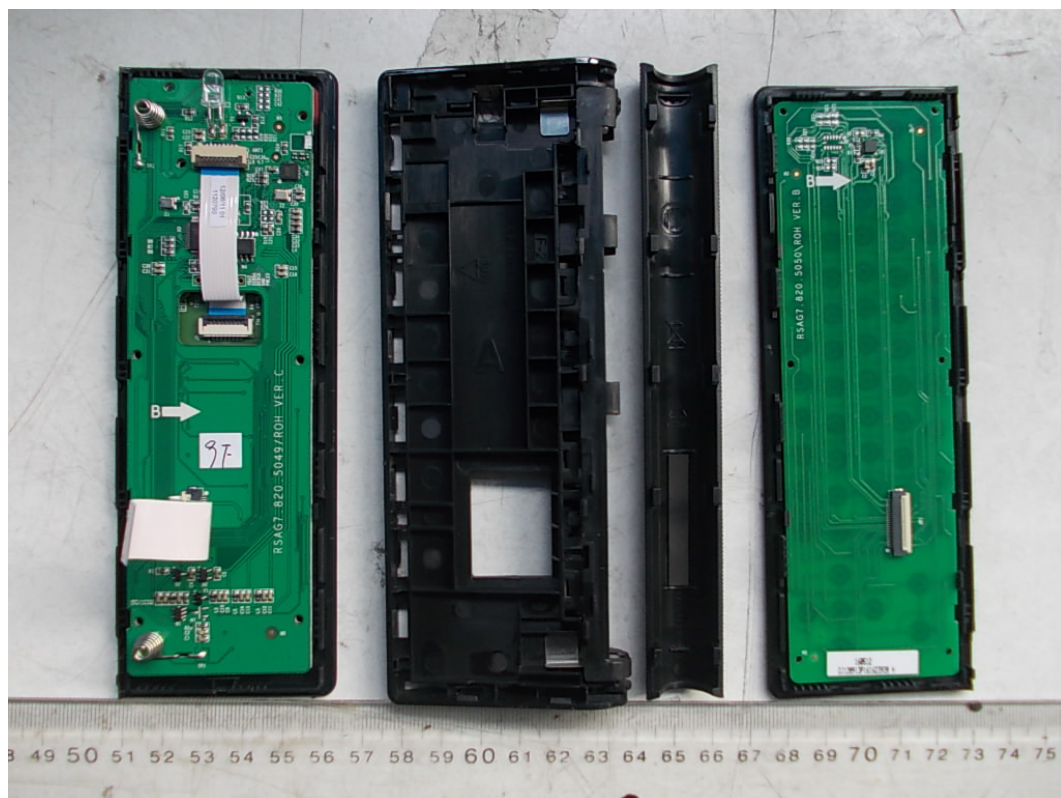


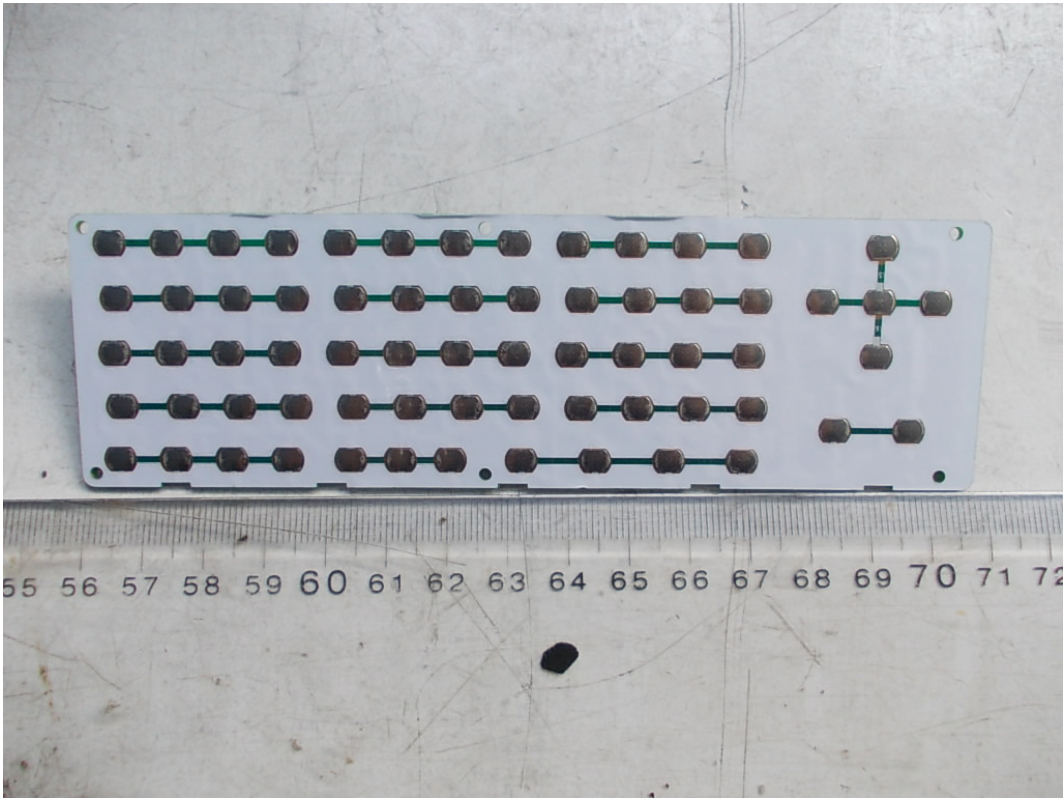
*FIGURE 3  
HISENSE PULSE WITH GOOGLE TV REMOTE CONTROL (M/N: ERF6B10)  
BATTERY COVER REMOVED*



*FIGURE 4  
HISENSE PULSE WITH GOOGLE TV REMOTE CONTROL (M/N: ERF6B10)  
COVER REMOVED*



*FIGURE 5  
HISENSE PULSE WITH GOOGLE TV REMOTE CONTROL (M/N: ERF6B10)  
KEY BOARD (FRONT VIEW)*



*FIGURE 6  
HISENSE PULSE WITH GOOGLE TV REMOTE CONTROL (M/N: ERF6B10)  
KEY BOARD (BACK VIEW)*

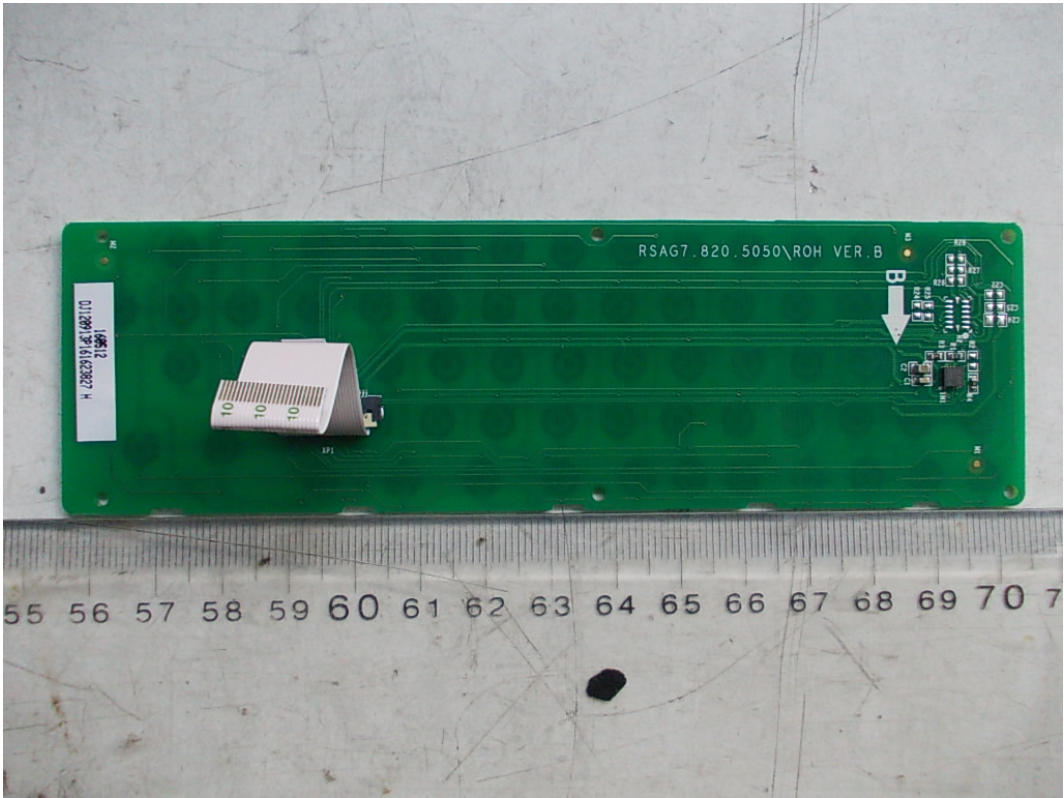


FIGURE 7  
HISENSE PULSE WITH GOOGLE TV REMOTE CONTROL (M/N: ERF6B10)  
TOUCH BOARD

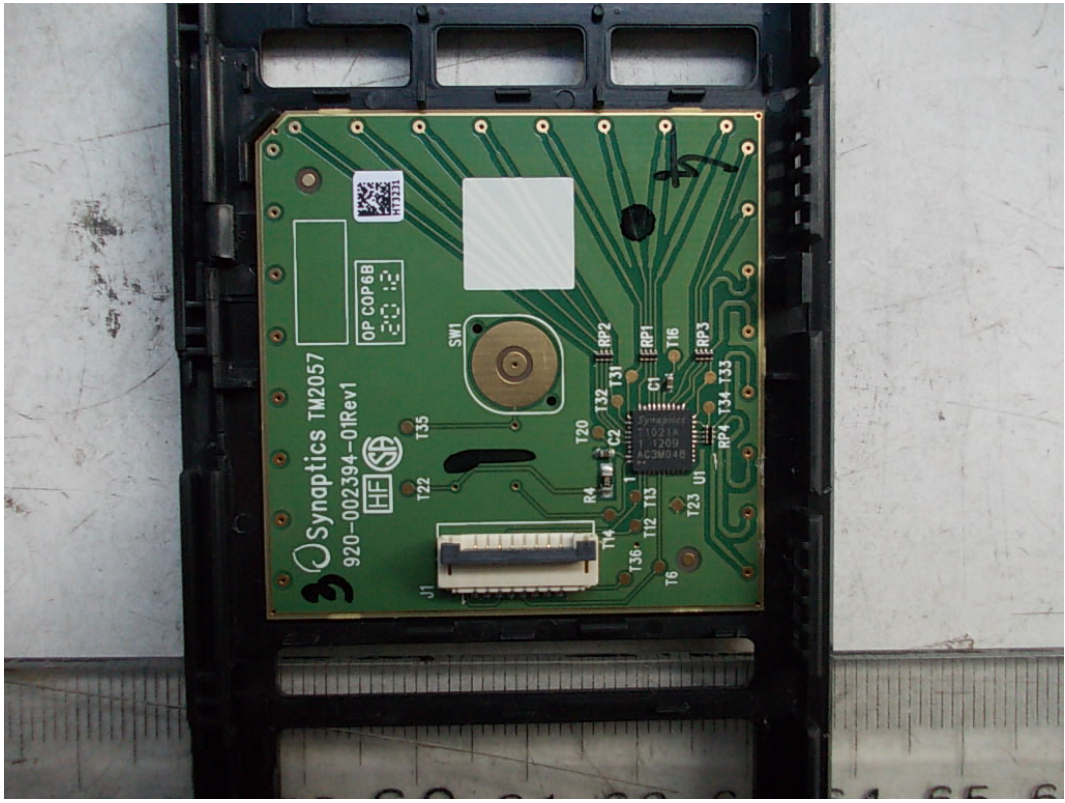


FIGURE 8  
HISENSE PULSE WITH GOOGLE TV REMOTE CONTROL (M/N: ERF6B10)  
MAIN BOARD (FRONT VIEW)

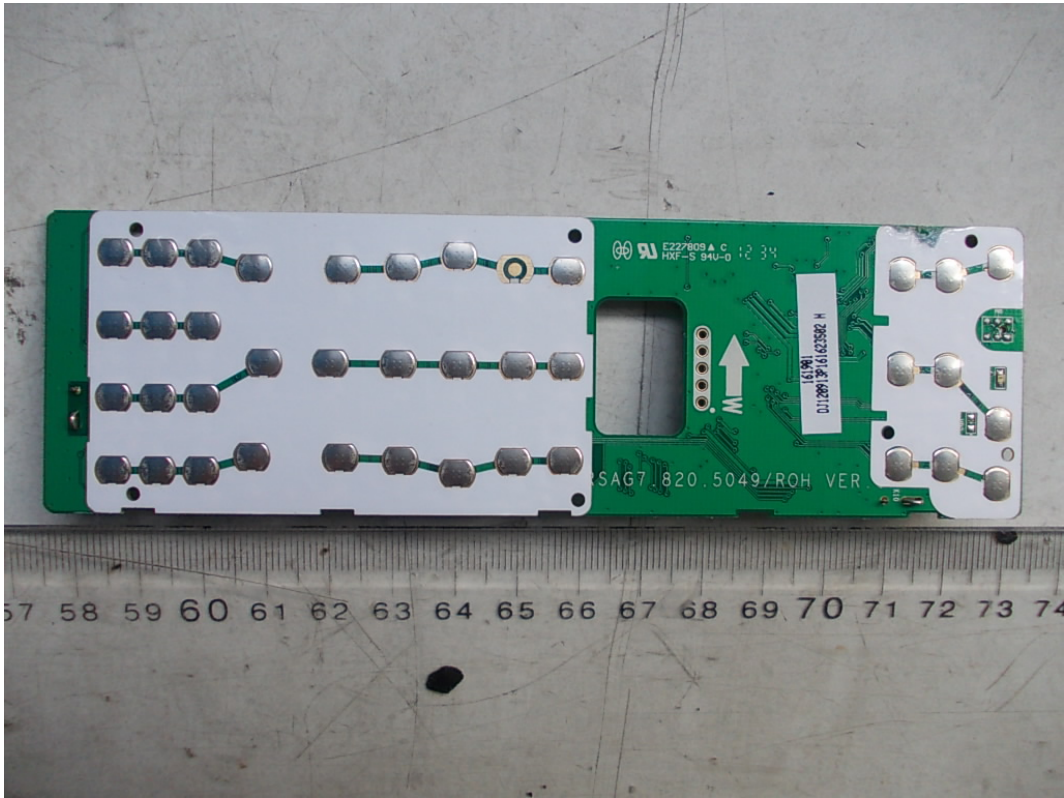


FIGURE 9  
HISENSE PULSE WITH GOOGLE TV REMOTE CONTROL (M/N: ERF6B10)  
MAIN BOARD (BACK VIEW)

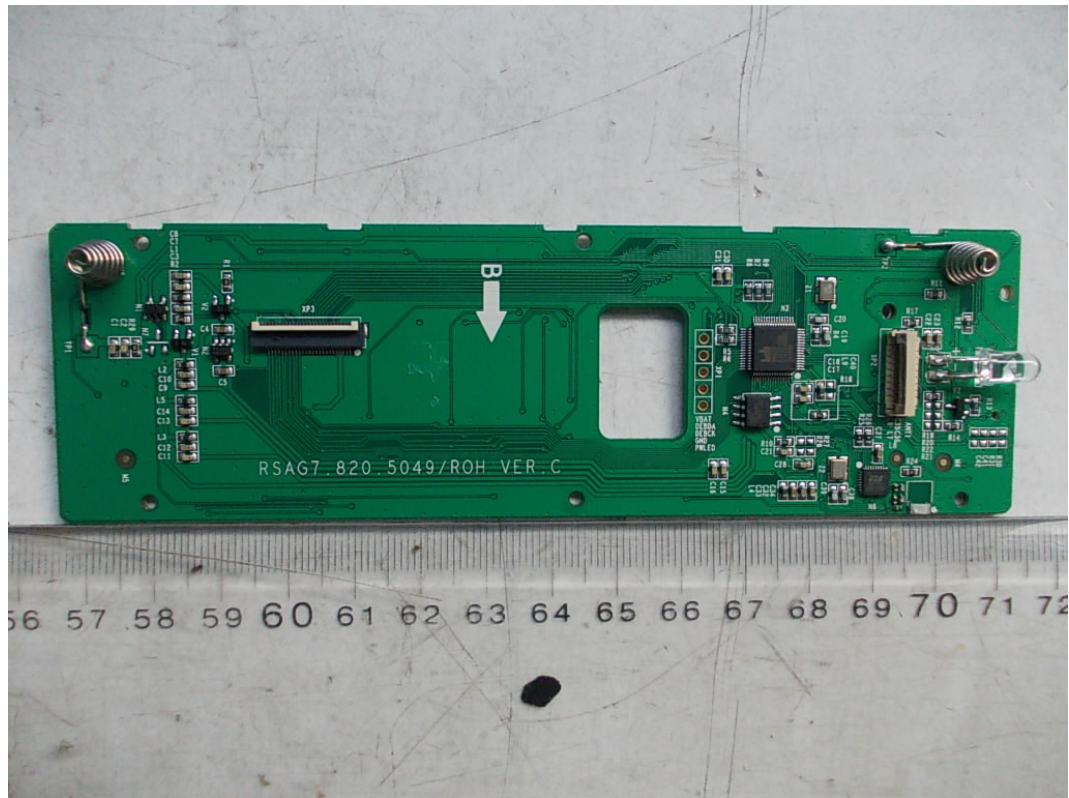


FIGURE 10  
HISENSE PULSE WITH GOOGLE TV REMOTE CONTROL (M/N: ERF6B10)  
CHIP & CRYSTAL ON MAIN BOARD

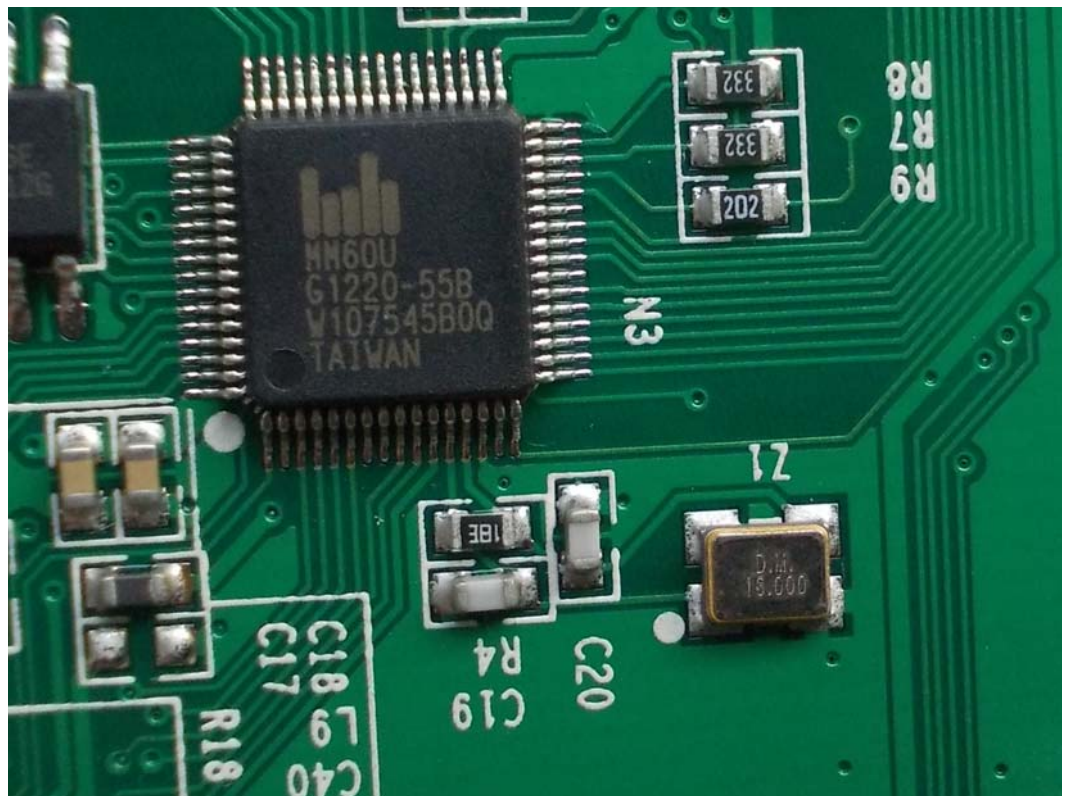


FIGURE 11  
HISENSE PULSE WITH GOOGLE TV REMOTE CONTROL (M/N: ERF6B10)  
RF PART ON MAIN BOARD

