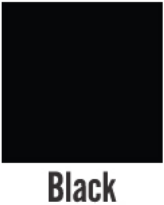
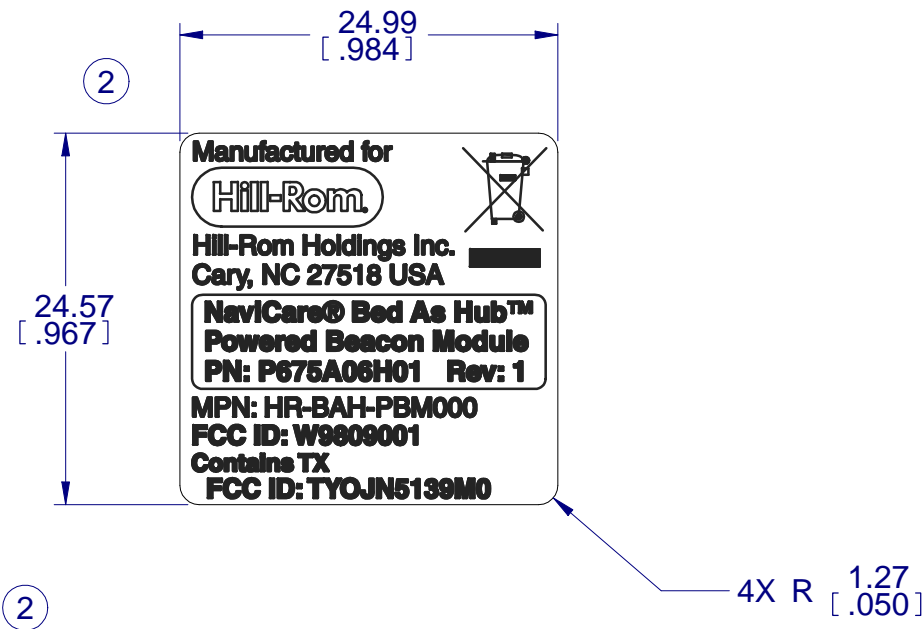


- NOTES:
- DRAWING SHALL BE INTERPRETED IN ACCORDANCE WITH ASME Y14.5M-1994. ALL DIMENSIONS ARE IN MILLIMETERS, SECONDARY DIMENSIONS ARE IN INCHES.
  - UNLESS OTHERWISE SPECIFIED ALL DIMENSIONS ARE  $\pm 0.4$  [.016].
  - MATERIAL: 0.13 [ .005 ] AUTOTYPE EBG POLYESTER ( VELVET FINISH ).
  - ADHESIVE: SELECTIVE 3M 300LSE SERIES, 5.0 MILS THICK.
  - FINISH: SELECTIVE UV TEXTURE. NO TEXTURE IN CLEAR TREND WINDOW.
  - GEOMETRY NOT DIMENSIONED IS DEFINED BY ELECTRONIC ART WORK AND SUPPLIED BY HILL-ROM.
  - NO CHANGE SHALL BE MADE TO MATERIALS OR PROCESSES WITHOUT PRIOR WRITTEN APPROVAL FROM HILL-ROM ENGINEERING.
  - LABEL MFG. MUST BE UL RECOGNIZED UNDER PGDQ2, "MARKING AND LABELING SYSTEMS" FOR USE ON BAKED, EPOXY-BASE PAINT OR FOR SURFACE MATERIALS SPECIFIED FOR USE. THIS APPROVAL IS BASED UPON REQUIREMENTS IN UL969.
  - LABEL MATERIALS MUST BE UL RECOGNIZED UNDER PGGU2, "MARKING AND LABELING SYSTEM MATERIAL". THE STANDARD USED TO INVESTIGATE PRODUCTS IN THIS CATEGORY IS UL969.
  - LABEL MANUFACTURER MUST BE CSA ACCEPTED UNDER "ACCEPTED ADHESIVE - TYPE NAME PLATES AND MATERIALS". THIS ACCEPTANCE IS BASE UPON CSA C22.2 NO. 0.15, ADHESIVE LABELS.
  - LABEL SHALL BE SUITABLE FOR USE WHERE OCCASIONALLY EXPOSED TO HOT WATER AND CLEANING DISINFECTANT SOLUTIONS. STORAGE TEMPERATURES FROM -40°C TO 70°C [-40°F TO 15 8°F]. NORMAL USE TEMPERATURES FROM 10°C TO 40°C [50°F TO 104° F].
  - RELEASE LINER WITH PART NUMBER, REVISION AND LABEL ADHESIVE EXPIRATION DATE REQUIRED. DATE FORMAT: (EXP: MM/YY). POSITIONING PER MANUFACTURER DISCRETION. EXAMPLE: P/N XXXXXX REV. XX EXP: MM/YY
  - COLORS PER HILL-ROM SPEC 90313.
  - LABELS SHALL BE PACKAGED TO KEEP THE ADHESIVE FROM THE DIE-CUT EDGES OF THE PRECEDING LABEL FROM CONTACTING THE FRONT SURFACE OF THE SUBSEQUENT LABEL. I.E.- A SEPARATOR SHEET, FACE TO FACE, BACK TO BACK, BAND AND BAG, ROLL, OR ANY REASONABLY PACKAGING ARRANGEMENT APPROVED IN WRITING BY HILL-ROM IS ACCEPTABLE.

ADVANCE INFORMATION  
ONLY  
- SUBJECT TO CHANGE -

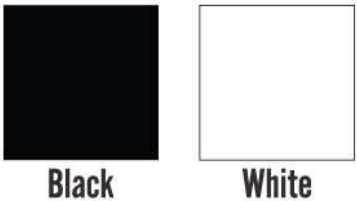
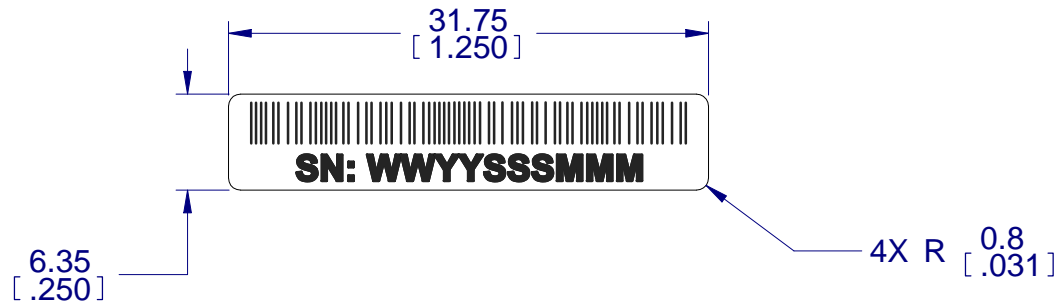
REV	REV DATE	AUTH. DOC.
1	01/21/09	C060184
2	04/23/09	C066754



<b>NOTICE</b> THIS DRAWING AND ALL INFORMATION THEREON IS THE PROPERTY OF: <b>Hill-Rom</b> THIS DRAWING AND INFORMATION THEREON, IS CONFIDENTIAL, MUST NOT BE MADE PUBLIC, COPIED OR USED TO DISADVANTAGE OF SAID HILL-ROM, INC. IT IS SUBJECT TO RETURN ON DEMAND. © 2009 HILL-ROM CO. INC.	
<b>DESCRIPTION:</b> <b>LABEL, BEACON PRODUCT</b>	
<b>DO NOT SCALE DRAWING</b>	THIRD ANGLE PROJECTION
DRAWN BY: <b>G.SUTTMAN</b>	ENGINEER: <b>J.LUPTON</b>
SIZE <b>B</b> SHEET <b>1</b> OF <b>1</b> SCALE <b>2:1</b>	DWG. NO.: <b>155508</b>

NOTES:

1. DRAWING SHALL BE INTERPRETED IN ACCORDANCE WITH ASME Y14.5M-1994. ALL DIMENSIONS ARE IN MILLIMETERS, SECONDARY DIMENSIONS ARE IN INCHES.
2. UNLESS OTHERWISE SPECIFIED ALL DIMENSIONS ARE  $\pm 0.4$  [.016].
3. MATERIAL: 0.13 [ .005 ] AUTOTYPE EBG POLYESTER ( VELVET FINISH ).
4. ADHESIVE: SELECTIVE 3M 300LSE SERIES, 5.0 MILS THICK.
5. FINISH: SELECTIVE UV TEXTURE. NO TEXTURE IN CLEAR TREND WINDOW.
6. GEOMETRY NOT DIMENSIONED IS DEFINED BY ELECTRONIC ART WORK AND SUPPLIED BY HILL-ROM.
7. NO CHANGE SHALL BE MADE TO MATERIALS OR PROCESSES WITHOUT PRIOR WRITTEN APPROVAL FROM HILL-ROM ENGINEERING.
8. LABEL MFG. MUST BE UL RECOGNIZED UNDER PGDQ2, "MARKING AND LABELING SYSTEMS" FOR USE ON BAKED, EPOXY-BASE PAINT OR FOR SURFACE MATERIALS SPECIFIED FOR USE. THIS APPROVAL IS BASED UPON REQUIREMENTS IN UL969.
9. LABEL MATERIALS MUST BE UL RECOGNIZED UNDER PGGU2, "MARKING AND LABELING SYSTEM MATERIAL". THE STANDARD USED TO INVESTIGATE PRODUCTS IN THIS CATEGORY IS UL969.
10. LABEL MANUFACTURER MUST BE CSA ACCEPTED UNDER "ACCEPTED ADHESIVE - TYPE NAME PLATES AND MATERIALS". THIS ACCEPTANCE IS BASE UPON CSA C22.2 NO. 0.15, ADHESIVE LABELS.
11. LABEL SHALL BE SUITABLE FOR USE WHERE OCCASIONALLY EXPOSED TO HOT WATER AND CLEANING DISINFECTANT SOLUTIONS. STORAGE TEMPERATURES FROM -40°C TO 70°C [-40°F TO 15 8°F]. NORMAL USE TEMPERATURES FROM 10°C TO 40°C [50°F TO 104° F].
12. RELEASE LINER WITH PART NUMBER, REVISION AND LABEL ADHESIVE EXPIRATION DATE REQUIRED. DATE FORMAT: (EXP: MM/YY). POSITIONING PER MANUFACTURER DISCRETION.  
EXAMPLE: P/N XXXXXX REV. XX EXP: MM/YY
13. COLORS PER HILL-ROM SPEC 90313.
14. LABELS SHALL BE PACKAGED TO KEEP THE ADHESIVE FROM THE DIE-CUT EDGES OF THE PRECEDING LABEL FROM CONTACTING THE FRONT SURFACE OF THE SUBSEQUENT LABEL.  
I.E.- A SEPARATOR SHEET, FACE TO FACE, BACK TO BACK, BAND AND BAG, ROLL, OR ANY REASONABLY PACKAGING ARRANGEMENT APPROVED IN WRITING BY HILL-ROM IS ACCEPTABLE.
15. BARCODE SHOULD BE EITHER CODE 39 OR 128 AND CONTAIN ONLY THE MANUFACTURING IDENTIFICATION CODE AS INDICATED IN NOTE 16.
16. THE FOLLOWING MANUFACTURING IDENTIFICATION CODE IS TO BE MARKED WHERE SHOWN:  
WW = WEEK OF YEAR MANUFACTURED ( 01-53 ).  
YY = LAST TWO DIGITS OF YEAR MANUFACTURED ( 00-99 ).  
SSS = SEQUENTIAL ITEM NUMBER ( 3-CHARACTER ALPHANUMERIC )  
MMM = MANUFACTURING LOCATION ( 3-LETTER ABBREVIATION ).



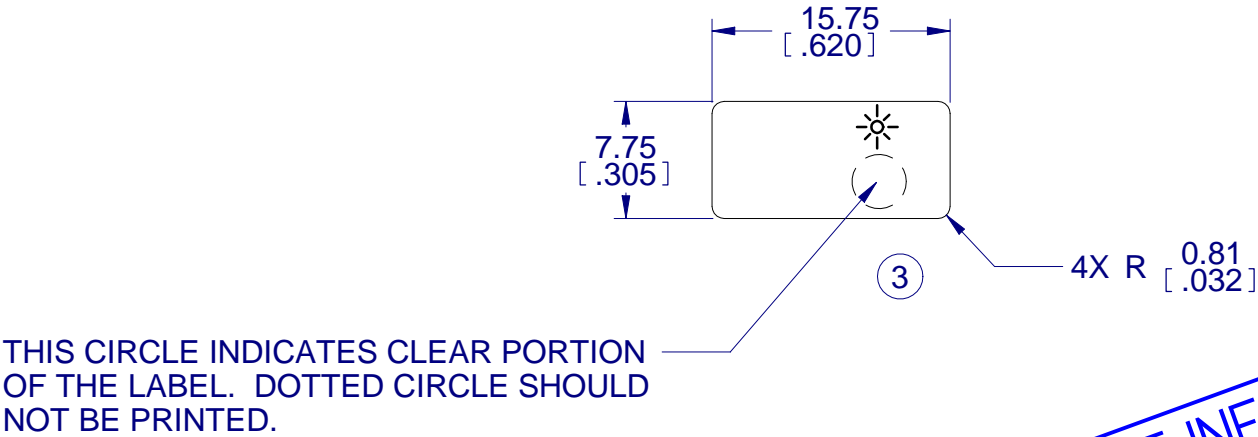
ADVANCE INFORMATION  
ONLY  
- SUBJECT TO CHANGE -

REV	REV DATE	AUTH. DOC.
B	04/22/09	C066754

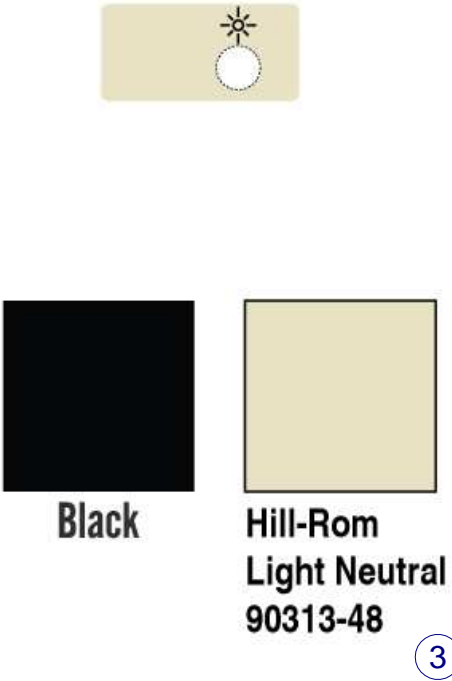
<b>NOTICE</b> THIS DRAWING AND ALL INFORMATION THEREON IS THE PROPERTY OF: <b>Hill-Rom</b> THIS DRAWING AND INFORMATION THEREON, IS CONFIDENTIAL, MUST NOT BE MADE PUBLIC, COPIED OR USED TO DISADVANTAGE OF SAID HILL-ROM, INC. IT IS SUBJECT TO RETURN ON DEMAND. © 2009 HILL-ROM CO. INC.			
DESCRIPTION: <b>LABEL,SERIAL NUMBER,W/ BARCODE</b>			
DO NOT SCALE DRAWING		THIRD ANGLE PROJECTION	
DRAWN BY: <b>G.SUTTMAN</b>		ENGINEER: <b>J.LUPTON</b>	
SIZE <b>B</b>	SHEET <b>1</b> OF <b>1</b>	SCALE <b>2:1</b>	DWG. NO.: <b>158194</b>

- NOTES:
1. DRAWING SHALL BE INTERPRETED IN ACCORDANCE WITH ASME Y14.5M-1994. ALL DIMENSIONS ARE IN MILLIMETERS, SECONDARY DIMENSIONS ARE IN INCHES.
  2. UNLESS OTHERWISE SPECIFIED ALL DIMENSIONS ARE  $\pm 0.4$  [.016].
  3. MATERIAL: 0.1 [.004] POLYESTER WITH CHROME BARRIER ON 0.1 [.004] WHITE VINYL ( SURFACE FINISH ).
  4. ADHESIVE: 0.05 [.002] FLEXCON L344 ADHESIVE ( UL APPROVED FOR ALKYD ENAMEL, ACRYLIC PAINT, STAINLESS STEEL, POLYESTER POWER COAT PAINT, NYLON, ALUMINUM, GALVANIZED STEEL, POLYESTER PAINT ABS PLASTIC POLYETHYLENE, POLYPROPYLENE, POLYSTYRENE).
  5. FINISH: 0.03 [.001] MATTE POLYESTER OVERLAMINATE.
  6. GEOMETRY NOT DIMENSIONED IS DEFINED BY ELECTRONIC ART WORK AND SUPPLIED BY HILL-ROM.
  7. NO CHANGE SHALL BE MADE TO MATERIALS OR PROCESSES WITHOUT PRIOR WRITTEN APPROVAL FROM HILL-ROM ENGINEERING.
  8. LABEL MFG. MUST BE UL RECOGNIZED UNDER PGDQ2, "MARKING AND LABELING SYSTEMS" FOR USE ON BAKED, EPOXY-BASE PAINT OR FOR SURFACE MATERIALS SPECIFIED FOR USE. THIS APPROVAL IS BASED UPON REQUIREMENTS IN UL969.
  9. LABEL MATERIALS MUST BE UL RECOGNIZED UNDER PGGU2, "MARKING AND LABELING SYSTEM MATERIAL". THE STANDARD USED TO INVESTIGATE PRODUCTS IN THIS CATEGORY IS UL969.
  10. LABEL MANUFACTURER MUST BE CSA ACCEPTED UNDER "ACCEPTED ADHESIVE - TYPE NAME PLATES AND MATERIALS". THIS ACCEPTANCE IS BASE UPON CSA C22.2 NO. 0.15, ADHESIVE LABELS.
  11. LABEL SHALL BE SUITABLE FOR USE WHERE OCCASIONALLY EXPOSED TO HOT WATER AND CLEANING DISINFECTANT SOLUTIONS. STORAGE TEMPERATURES FROM -40°C TO 70°C [-40°F TO 15 8°F]. NORMAL USE TEMPERATURES FROM 10°C TO 40°C [50°F TO 104° F].
  12. RELEASE LINER WITH PART NUMBER, REVISION AND LABEL ADHESIVE EXPIRATION DATE REQUIRED. DATE FORMAT: (EXP: MM/YY). POSITIONING PER MANUFACTURER DISCRETION.
  13. COLORS PER HILL-ROM SPEC 90313.
  14. LABELS SHALL BE PACKAGED TO KEEP THE ADHESIVE FROM THE DIE-CUT EDGES OF THE PRECEDING LABEL FROM CONTACTING THE FRONT SURFACE OF THE SUBSEQUENT LABEL.  
I.E.- A SEPARATOR SHEET, FACE TO FACE, BACK TO BACK, BAND AND BAG, ROLL, OR ANY REASONABLY PACKAGING ARRANGEMENT APPROVED IN WRITING BY HILL-ROM IS ACCEPTABLE.

REV	REV DATE	AUTH. DOC.
2	01/27/09	C060184
3	05/18/09	C066754



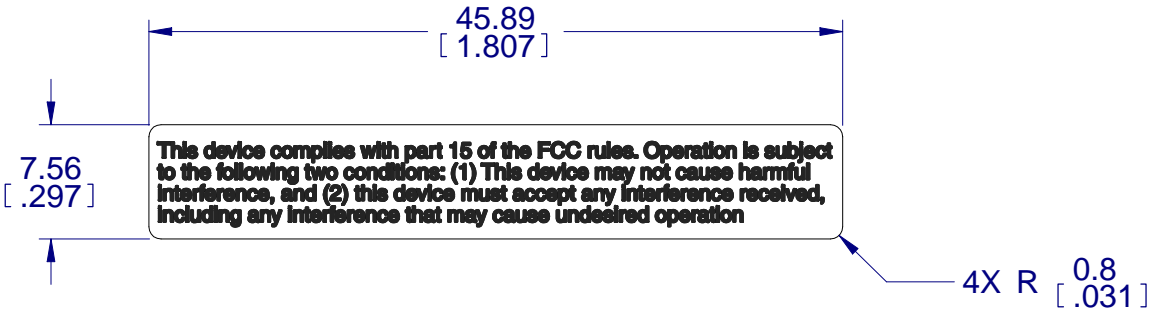
ADVANCE INFORMATION  
ONLY  
- SUBJECT TO CHANGE -



NOTICE			
THIS DRAWING AND ALL INFORMATION THEREON IS THE PROPERTY OF:			
<b>Hill-Rom</b>			
THIS DRAWING AND INFORMATION THEREON, IS CONFIDENTIAL, MUST NOT BE MADE PUBLIC, COPIED OR USED TO DISADVANTAGE OF SAID HILL-ROM, INC. IT IS SUBJECT TO RETURN ON DEMAND. © 2009 HILL-ROM CO. INC.			
DESCRIPTION:			
LABEL, BEACON LED			
DO NOT SCALE DRAWING		THIRD ANGLE PROJECTION	
DRAWN BY: G.SUTTMAN		ENGINEER: J.LUPTON	
SIZE B	SHEET 1 OF 1	SCALE 2:1	DWG. NO.: 149626

- NOTES:
1. DRAWING SHALL BE INTERPRETED IN ACCORDANCE WITH ASME Y14.5M-1994. ALL DIMENSIONS ARE IN MILLIMETERS, SECONDARY DIMENSIONS ARE IN INCHES.
  2. UNLESS OTHERWISE SPECIFIED ALL DIMENSIONS ARE  $\pm 0.4$  [.016].
  3. MATERIAL: 0.13 [ .005 ] AUTOTYPE EBG POLYESTER ( VELVET FINISH ).
  4. ADHESIVE: SELECTIVE 3M 300LSE SERIES, 5.0 MILS THICK.
  5. FINISH: SELECTIVE UV TEXTURE. NO TEXTURE IN CLEAR TREND WINDOW.
  6. GEOMETRY NOT DIMENSIONED IS DEFINED BY ELECTRONIC ART WORK AND SUPPLIED BY HILL-ROM.
  7. NO CHANGE SHALL BE MADE TO MATERIALS OR PROCESSES WITHOUT PRIOR WRITTEN APPROVAL FROM HILL-ROM ENGINEERING.
  8. LABEL MFG. MUST BE UL RECOGNIZED UNDER PGDQ2, "MARKING AND LABELING SYSTEMS" FOR USE ON BAKED, EPOXY-BASE PAINT OR FOR SURFACE MATERIALS SPECIFIED FOR USE. THIS APPROVAL IS BASED UPON REQUIREMENTS IN UL969.
  9. LABEL MATERIALS MUST BE UL RECOGNIZED UNDER PGGU2, "MARKING AND LABELING SYSTEM MATERIAL". THE STANDARD USED TO INVESTIGATE PRODUCTS IN THIS CATEGORY IS UL969.
  10. LABEL MANUFACTURER MUST BE CSA ACCEPTED UNDER "ACCEPTED ADHESIVE - TYPE NAME PLATES AND MATERIALS". THIS ACCEPTANCE IS BASE UPON CSA C22.2 NO. 0.15, ADHESIVE LABELS.
  11. LABEL SHALL BE SUITABLE FOR USE WHERE OCCASIONALLY EXPOSED TO HOT WATER AND CLEANING DISINFECTANT SOLUTIONS. STORAGE TEMPERATURES FROM -40°C TO 70°C [-40°F TO 15 8°F]. NORMAL USE TEMPERATURES FROM 10°C TO 40°C [50°F TO 104° F].
  12. RELEASE LINER WITH PART NUMBER, REVISION AND LABEL ADHESIVE EXPIRATION DATE REQUIRED. DATE FORMAT: (EXP: MM/YY). POSITIONING PER MANUFACTURER DISCRETION.
  13. COLORS PER HILL-ROM SPEC 90313.
  14. LABELS SHALL BE PACKAGED TO KEEP THE ADHESIVE FROM THE DIE-CUT EDGES OF THE PRECEDING LABEL FROM CONTACTING THE FRONT SURFACE OF THE SUBSEQUENT LABEL.  
I.E.- A SEPARATOR SHEET, FACE TO FACE, BACK TO BACK, BAND AND BAG, ROLL, OR ANY REASONABLY PACKAGING ARRANGEMENT APPROVED IN WRITING BY HILL-ROM IS ACCEPTABLE.

REV	REV DATE	AUTH. DOC.
A	04/14/09	C0xxxxx

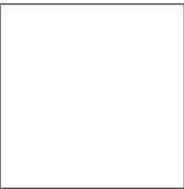


This device complies with part 15 of the FCC rules. Operation is subject to the following two conditions: (1) This device may not cause harmful interference, and (2) this device must accept any interference received, including any interference that may cause undesired operation

ADVANCE INFORMATION  
ONLY  
- SUBJECT TO CHANGE -



Black



White

<b>NOTICE</b> THIS DRAWING AND ALL INFORMATION THEREON IS THE PROPERTY OF: <b>Hill-Rom</b> THIS DRAWING AND INFORMATION THEREON, IS CONFIDENTIAL, MUST NOT BE MADE PUBLIC, COPIED OR USED TO DISADVANTAGE OF SAID HILL-ROM, INC. IT IS SUBJECT TO RETURN ON DEMAND. © 2009 HILL-ROM CO. INC.			
DESCRIPTION: <b>LABEL,FCC INTERFER,GENERIC</b>			
DO NOT SCALE DRAWING		THIRD ANGLE PROJECTION	
DRAWN BY: <b>G.SUTTMAN</b>		ENGINEER: <b>C.THOMECZK</b>	
SIZE <b>B</b>	SHEET <b>1</b> OF <b>1</b>	SCALE <b>2:1</b>	DWG. NO.: <b>158177</b>