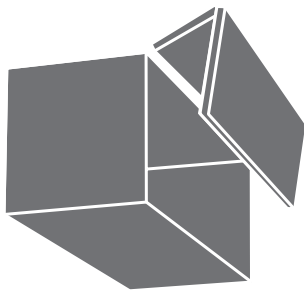


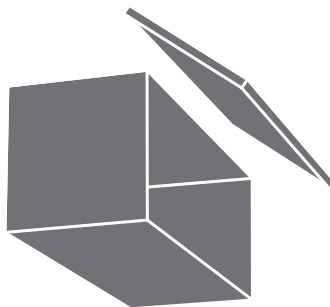
SERVO-DRIVE for AVENTOS

Installation leaflet – Original

AVENTOS HF



AVENTOS HS



AVENTOS HL

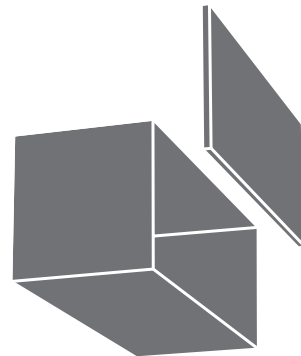


Table of contents

1	About these instructions	2
	Validity and target group	2
2	Safety	3
	2.1 Principle	3
	2.2 Safety information	3
	2.3 Intended use	4
	2.4 Structural changes and spare parts	4
	2.5 Children	4
	2.6 Wall cabinet care and cleaning	5
3	Description	6
4	Problems	10
5	Technical data	11
	5.1 Power supply	11
	5.2 Drive unit	11
	5.3 Blum switch	11
6	Spare parts	11
7	Disposal	11

1 About these instructions

Thank you for your purchase. SERVO-DRIVE for AVENTOS from Julius Blum GmbH is a high-quality product that simplifies everyday kitchen tasks. To better enjoy the comfort and safety of SERVO-DRIVE for AVENTOS, please note the following:

- ⇒ Carefully read the instruction leaflet before use.
- ⇒ Please retain the instruction leaflet for the service life of SERVO-DRIVE for AVENTOS.
- ⇒ Please pass on this instruction leaflet to each subsequent owner or user of SERVO-DRIVE for AVENTOS.



DANGER

Danger:

The DANGER sign indicates important safety information that must be followed.



WARNING

Warning:

The WARNING sign indicates important warning information that must be followed.

CAUTION

Comment:

The CAUTION sign indicates information that if not followed may lead to the premature wear of SERVO-DRIVE for AVENTOS.

i

NOTICE

Note:

The NOTE sign indicates information that should be followed.

Validity and target group

This instruction leaflet is intended for all users of lift systems in furniture equipped with SERVO-DRIVE for AVENTOS.

Installation, set up, initial operation, maintenance and removal may only be carried out by qualified personnel according to the separate installation instructions.

2 Safety

2.1 Principle

SERVO-DRIVE for AVENTOS complies with current safety standards.

Nevertheless, there are certain risk factors if the information in this instruction leaflet is not followed. Please be aware that Julius Blum GmbH is not responsible for incidental or consequential damages that may arise due to non-compliance with this instruction leaflet.

2.2 Safety information

- ⇒ The mains plug and the Blum transformer must be easily accessible.
- ⇒ Neither the Blum transformer nor any cabling should come into contact with moving parts.
- ⇒ This device should not be used by persons (including children) with limited physical, sensory or mental abilities, or those with a lack of experience and/or knowledge. Unless they are supervised by a person responsible for their safety or they receive instruction on how to operate the device.



WARNING

Danger of injury in the area of the lever.

Touching the area around the lever during the opening and closing motion can cause injury.

- ⇒ Do not touch the area around the lever during the opening and closing motion.
-

2.3 Intended use

SERVO-DRIVE for AVENTOS supports the opening and closing of lift systems in furniture and may only be used under the following conditions:

- In dry, enclosed rooms
- In combination with AVENTOS lift systems from Julius Blum GmbH within permitted technical specifications
- In combination with a Blum transformer

Technical data specifications can be found in the Blum sales documentation.

⇒ For more information, please see your distributor.

Julius Blum GmbH is not liable for any other use.

2.4 Structural changes and replacement parts

Structural changes and spare parts not approved by the manufacturer affect the safety and functionality of SERVO-DRIVE for AVENTOS and are, therefore, not allowed.

⇒ Only use original spare parts from Julius Blum GmbH.

⇒ Blum components are the only devices that should be connected to the Blum transformer.

⇒ Only qualified technicians may install/replace Blum components, modify the position of the Blum transformer or modify any cabling.

2.5 Children



DANGER

Opening and closing lift systems may pose a risk of injury to children!

Persons, especially children, who are sitting or standing on work surfaces may be pushed from work surfaces or injured when opening and closing a lift system.

⇒ Children should be properly supervised when in the room so that they do not play with the device.

⇒ To ensure that SERVO-DRIVE for AVENTOS is not triggered unintentionally, the outlet should be switched off or unplugged.



DANGER

Choke danger to children when playing with the Blum switch.

Children could choke on the Blum switch battery.

⇒ Make sure that children do not open the Blum switch as they could choke on parts or the battery from the Blum switch.



NOTICE

⇒ To ensure that lift systems cannot be activated unintentionally, we recommend connecting the Blum transformer to a switched outlet. For more information, please consult an electrician.

2.6 Wall cabinet care and cleaning

Danger of electric shock

There is a danger of electric shock if fluids penetrate the Blum transformer (page 6, item 3).



- ⇒ Make sure that no water or aggressive cleaning material comes in contact with the drive unit, Blum transformer or Blum switch while cleaning the wall cabinet.
- ⇒ Switch off the power to the Blum transformer and/or unplug the unit before cleaning the drive unit.
- ⇒ Never open a Blum transformer.
- ⇒ Any cabling damage should be immediately corrected by a qualified specialist.

Damage to the drive unit or Blum switch.

- ⇒ Never take apart a drive unit or Blum switch.

Penetrating moisture and aggressive cleaning materials can damage the electronics of the drive unit, Blum transformer and Blum switch.

- ⇒ The drive unit, Blum transformer and Blum switch should only be cleaned with a moist cloth.

The Blum transformer can be damaged if covered by towels or other items due to overheating.

- ⇒ Do not cover the Blum transformer with towels or other items.

There is a danger of injury if the lever springs upward.

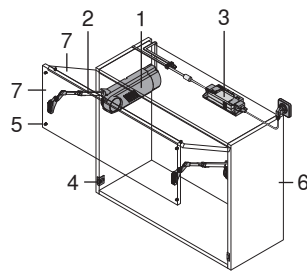
There is a danger of injury from the lever springing upwards due to improper removal of the front including fittings.



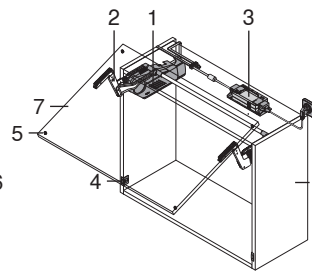
WARNING

- ⇒ Never remove the front for cleaning.
- ⇒ Front removal may only be carried out by qualified personnel according to the separate installation instructions.

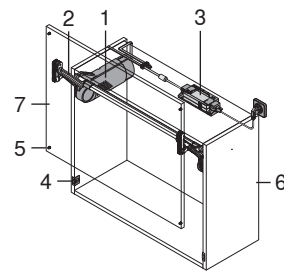
3 Description



AVENTOS HF



AVENTOS HS



AVENTOS HL

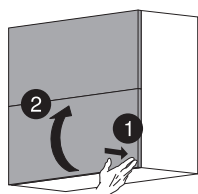
- 1 Lift mechanism, drive unit with LED display and cover cap
- 2 Lever
- 3 Blum transformer with LED display
- 4 Blum switch with battery display
- 5 Blum distance bumper
- 6 Cabinet
- 7 Front / Lift system

Function

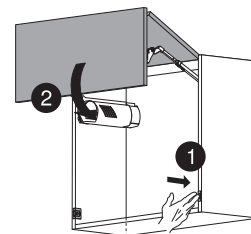
SERVO-DRIVE for AVENTOS supports the opening and closing of lift systems in furniture.

Electrical motion support system

The Blum switch (page 6, item 4) triggers the automatic opening and closing action of SERVO-DRIVE for AVENTOS.



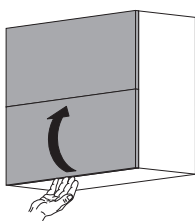
⇒ Press on the front
↳ The lift system opens automatically



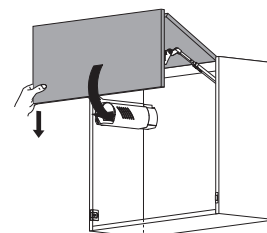
⇒ Press on the Blum switch
↳ The lift system closes automatically

Manual use

The lift system can be opened or closed manually without restrictions, due to the integrated free movement, without damaging SERVO-DRIVE for AVENTOS.



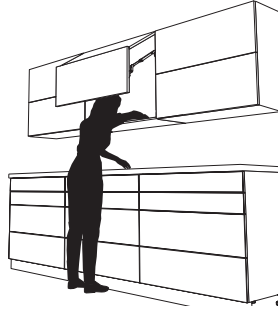
⇒ Manual opening of the lift system by moving it upwards



⇒ Manual closing of the lift system by moving it downwards

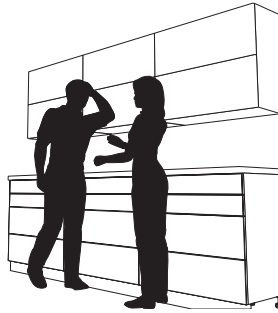
Collision detection

The opening and closing action is interrupted automatically via the integrated collision detection feature when the front hits a body part or other object.



Leaning protection

SERVO-DRIVE for AVENTOS also protects against activation when someone leans against the lift system. Leaning on the lift system will not open it.



CAUTION

Premature wear of SERVO-DRIVE for AVENTOS due to improper use!

⇒ Do not press/pull with force against the movement direction when opening or closing the lift system.

If the power supply is interrupted during SERVO-DRIVE for AVENTOS motion, the lift system remains in place. Simply touch the Blum switch to reactivate SERVO-DRIVE for AVENTOS.

The following are required to ensure the error-free functioning of SERVO-DRIVE for AVENTOS:

- Blum spacing bumpers (page 6, item 5) must be attached to the front to maintain the required distance between the lift system and the cabinet.
- No items should be placed between the front and the cabinet and/or drive unit.

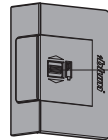
Blum switch

Function

The Blum switch is battery-operated (CR2032).

Only use batteries from well-known manufacturers.

When the battery power begins to weaken, the battery display (LED) begins to flash red.

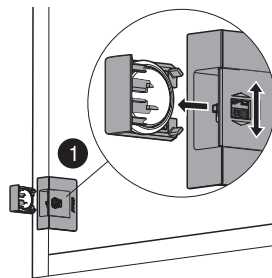


Battery display (LED)

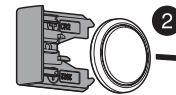


⇒ This device complies with Part 15 of the FCC Rules. Operation is subject to the following two conditions: (1) this device may not cause harmful interference, and (2) this device must accept any interference received, including interference that may cause undesired operation.

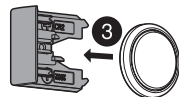
Replacing the battery



⇒ Open the Blum switch



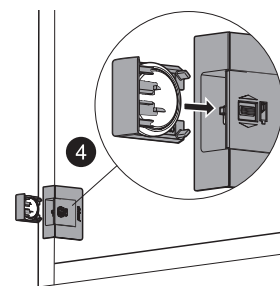
⇒ Remove the battery



⇒ Insert new battery

Type: CR2032

i Please note proper pole connections (+/-)



⇒ Close Blum switch

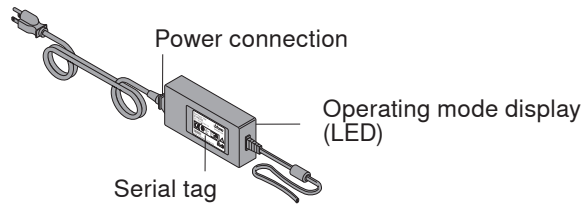
CAUTION

⇒ The Blum switch battery must not be recharged or thrown into fire.

i NOTICE

⇒ If the battery is inserted incorrectly, the Blum switch battery display flashes red.

Blum transformer



Function

The Blum transformer (page 6, item 3) provides power to the drive unit. Blum transformer function can be checked via the operating mode display (LED).

The following serial tag can be found on the Blum transformer:

100 W

Power Supply 電源供應器 Model/Modelo/Modelo/ 型號 : Z10NE050.01 Input/Entrada/Entrada/ 輸入 : 100-240VAC 50-60Hz 1.5A Output/Saida/Salida/ 輸出 : 24VDC 4.17A		 www.blum.com
 	總經銷: 奇諾斯國際貿易有限公司 亞細亞分公司 (00NE050.01) 登記商標: 100-240VAC 50-60Hz 1.5A 輸出: 24VDC 4.17A 製造商: Blum KTL SU 10284-8001 A/S總代理: Knobel International Corporation Tel: +82-31-711-99400 地址: XX, XX	
 	 總代理: 奇諾斯國際貿易有限公司 地址: 100VAC/50-60Hz 1.5A 輸出: 24VDC 4.17A	
BN:XXYY SN:XXXXXX-XXXXXX Made in China/Feito na China/Hecho en China 中國製造		

4 Fault Diagnosis

Problem	Possible cause	Remedy
Battery display on Blum switch flashes red.	Blum switch battery is losing power.	⇒ Replace the battery.
SERVO-DRIVE for AVENTOS does not open/close completely.	The front (page 6, item 7) is not balanced or does not lie on the cabinet evenly.	⇒ Contact your distributor's customer service to readjust the front.
SERVO-DRIVE for AVENTOS does not work for all lift systems when pressing on the front or using the Blum switch. The LED on the Blum transformer does not light.	Switched outlet is turned off	⇒ Turn on switched outlet.
	Blum transformer (page 6, item 3) is not plugged in.	⇒ Plug in the Blum transformer to the outlet.
	Power outage	⇒ Check the circuit breaker/fuse box. ⇒ If necessary, contact an qualified electrician.
	Blum transformer (page 6, item 3) is defective.	⇒ If necessary, have the distributor's customer service replace the Blum transformer.
SERVO-DRIVE for AVENTOS does not work for only one lift system when pressing on the front or using the Blum switch.	• Blum switch battery is dead. • Battery was inserted incorrectly (page 6, item 4).	⇒ Replace the battery – type CR2032. ⇒ Insert the battery correctly (see page 8).
	Blum switch is defective.	⇒ Contact your distributor's customer service to replace the Blum switch (page 6, item 4).
	Drive unit is defective (page 6, item 1).	⇒ Contact your distributor's customer service to replace the drive unit.
	Cabling is defective.	⇒ Contact your distributor's customer service to correct the problem.
SERVO-DRIVE for AVENTOS functions when pressing on the switch, but not when pressing on the front.	Blum spacing bumper (page 6, item 5) was removed or is defective.	⇒ Contact your distributor's customer service to replace the Blum spacing bumper.
SERVO-DRIVE for AVENTOS does not close completely.	An object is between the lift system and cabinet or jammed between the lever and front.	⇒ Remove the obstruction.
	An object juts out over the front edge of the cabinet.	⇒ Remove the obstruction.

i
NOTICE

⇒ If the SERVO-DRIVE for AVENTOS electrical motion support system does not work, the lift systems can still be opened and closed manually – they will not be damaged in this way.

5 Technical data

5.1 Power supply

Input voltage:	100-240VAC / 50-60Hz
Input voltage Japan:	100VAC \pm 10% / 50 and 60Hz
Output voltage:	24VDC
Nominal output current:	3.0A (Z10NE010.xx) 4.17A (Z10NE050.xx)
Operating temperature:	0 to +40°C
Protection category:	IP40
Should only be used in dry, enclosed rooms	

5.2 Drive unit

Supply voltage:	24VDC
Rated current:	1.4A
Power consumption in standby mode:	0.6W (front closed)
Operating temperature:	0 to +40°C
Protection category:	IP20
Should only be used in dry, enclosed rooms	

5.3 Blum switch

Frequency:	2.4GHz
Transmission method:	Bidirectional, via a coded wire
Range:	typically 10m (depending on material and contents)
Operating temperature:	0 to +40°C
Protection category:	IP20
Battery supply:	3V Lithium button cell CR2032
Should only be used in dry, enclosed rooms	

6 Replacement parts

⇒ Spare parts can be ordered from your distributor or furniture supplier.

7 Disposal

SERVO-DRIVE for AVENTOS removal may only be carried out by qualified personnel according to the separate installation instructions.

All SERVO-DRIVE for AVENTOS electronic components, including the battery, should be disposed of in a separate collection for electrical appliances as per local regulations.

Julius Blum GmbH
Furniture Fittings Mfg.
6973 Höchst, Austria
Tel.: +43 5578 705-0
Fax: +43 5578 705-44
E-mail: info@blum.com
www.blum.com