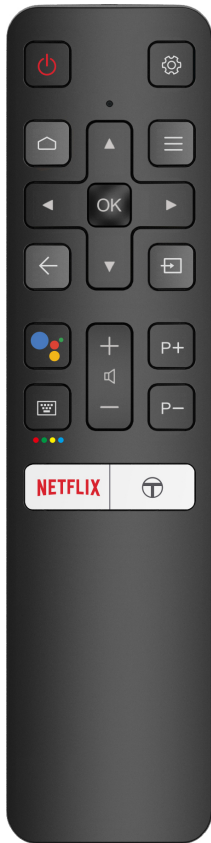


User's Manual

For
Exclusive Remote Control RC802V



Remote Control Functions

	Standby / quit standby.
	To display the Settings menu.
	To access the Smart TV homepage.
	To display the Option menu.
OK	To confirm an entry or selection. This button is also used to display the channel list in TV mode.
	Navigation direction buttons. The / buttons are also used to change channels in TV mode.
	To return to the previous menu or quit an App.
	To select input source.
	To turn on the Google Assistant/Google Voice Search function. <i>(Available only when the network connection works normally.)</i>
	To pop up the virtual remote control keyboard when available.
	To control the volume.
	To control the channels.
	To access T recommended Apps.
NETFLIX	To access Netflix. <i>(Not available for some models.)</i>

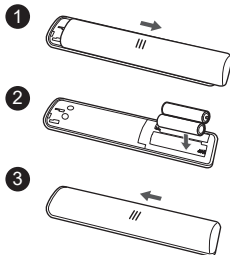
How to use the remote control

When using button for the first time, you will be prompted to pair the remote with the TV. Please follow the on-screen guide for pairing instructions.

- Keep the remote control and TV in 1 meter, press OK and button on the remote at the same time. You can use after activating successfully.
- This voice search function is only available for content search from certain apps.
- Set language in the TV **settings** to your local language or official language to enhance voice search successfully.
- When the voice search does not work, check if your remote control has been successfully paired with your TV, if the language setting is correct, if Google server is available and stable.

Installing Batteries

1. Push to open the back cover as illustrated.
2. Insert two AAA batteries according to the polarities marked on the battery case.
3. Replace the back cover as illustrated.



Warning

Batteries (battery pack or batteries installed) shall not be exposed to excessive heat such as sunshine, fire or the like.

For the purpose of performance improvement, design and specifications are subject to change without notice.

What's in the Box

1. Remote Control
2. Batteries
3. User's Manual

Specifications

Remote control size	154.6mm x 37.9mm x 16.4mm
Operating environment temperature	-25~40 °C
Weight	0.05kg
Communication methods	RF2.4G Adaptive
RF Operating distance	>15m
IR Operating distance	>10m
Battery type	Zn/MnO ₂ 1000mAh
Voice search current	< 15mA
Other button current	< 10mA
Sleep current	<5μA (automatically enter sleep mode after Bluetooth disconnected)
MIC	Built-in microphone
Keyboard	Handheld keyboard

Information for Users on Disposal of Old Equipment and Batteries



Products



Pb
Battery

Notice: The sign Pb below the symbol for batteries indicates that this battery contains lead.

These symbols indicate that the electrical and electronic equipment, and the battery with this symbol should not be disposed of as general household waste at its

end-of-life. Instead, the products should be handed over to the applicable collection points for the recycling of electrical and electronic equipment as well as batteries for proper treatment, recovery and recycling in accordance with your national legislation.

By disposing these products correctly, you will help to conserve natural resources and will help to prevent potential negative effects on the environment and human health which could otherwise be caused by inappropriate waste handling of these products. For more information about collection points and recycling of these products, please contact your local municipal office, your household waste disposal service or the shop where you purchased the product. Please do so in accordance with applicable national legislation or other rules in your country for the treatment of old electrical equipment and batteries.

Penalties may be applicable for incorrect disposal of this waste, in accordance with national legislation.



FCC

This device complies with Part 15 of the FCC Rules. Operation is subject to the following two conditions: (1) this device may not cause harmful interference, and (2) this device must accept any interference received, including interference that may cause undesired operation.

Caution: The user is cautioned that changes or modifications not expressly approved by the party responsible for compliance could void the user's authority to operate the equipment.

Note: This equipment has been tested and found to comply with the limits for a Class B digital device, pursuant to part 15 of the FCC Rules. These limits are designed to provide reasonable protection against harmful interference in a residential installation. This equipment generates uses and can radiate radio frequency energy and, if not installed and used in accordance with the instructions, may cause harmful interference to radio communications. However, there is no guarantee that interference will not occur in a particular installation. If this equipment does cause harmful interference to radio or television reception, which can be determined by turning the equipment off and on, the user is encouraged to try to correct the interference by one or more of the following measures:

- Reorient or relocate the receiving antenna.
- Increase the separation between the equipment and receiver.
- Connect the equipment into an outlet on a circuit different from that to which the receiver is connected.
- Consult the dealer or an experienced radio/TV technician for help.

FCC Supplier's Declaration of Conformity

TCL / RC802V

This device complies with part 15 of the FCC Rules. Operation is subject to the following two conditions: (1) This device may not cause harmful interference, and (2) this device must accept any interference received, including interference that may cause undesired operation.

Suppliers Name :TTE Technology, Inc. (dba TCL North America)

Suppliers Address (USA) :1860 Compton Ave, Corona, CA 92881, USA

Suppliers phone number and internet contact information:1-877-300-9509, <http://support.tclusa.com/>

IC

This device contains licence-exempt transmitter(s)/receiver(s) that comply with Innovation, Science and Economic Development Canada's licence-exempt RSS(s). Operation is subject to the following two conditions:

1. This device may not cause interference.
2. This device must accept any interference, including interference that may cause undesired operation of the device.

L'émetteur/récepteur exempt de licence contenu dans le présent appareil est conforme aux CNR d'Innovation, Sciences et Développement économique Canada applicables aux appareils radio exempts de licence. L'exploitation est autorisée aux deux conditions suivantes:

1. L'appareil ne doit pas produire de brouillage;
2. L'appareil doit accepter tout brouillage radioélectrique subi, même si le brouillage est susceptible d'en compromettre le fonctionnement.