

**Figure 7**  
General Appearance of the EUT



**Figure 8**  
Inside Configuration of the EUT



**Figure 9**  
Inside Configuration of the EUT

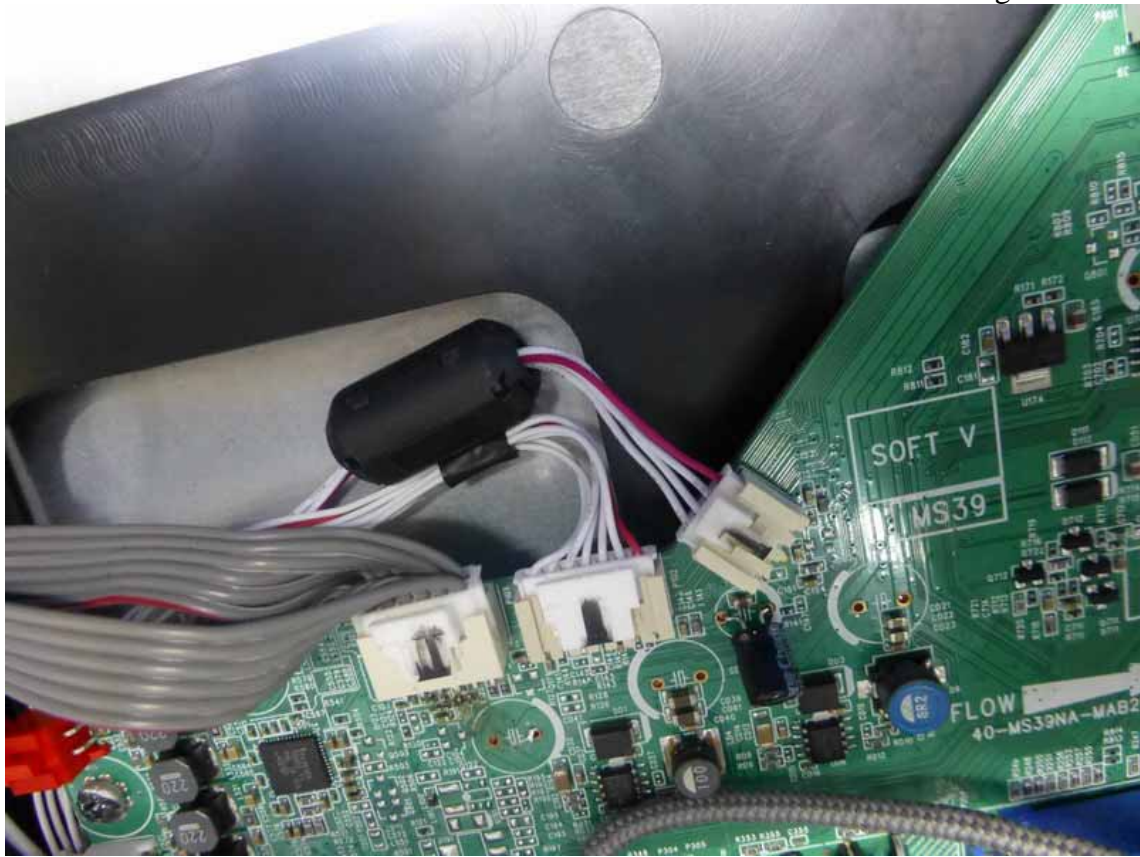


**Figure 10**  
Inside Configuration of the EUT

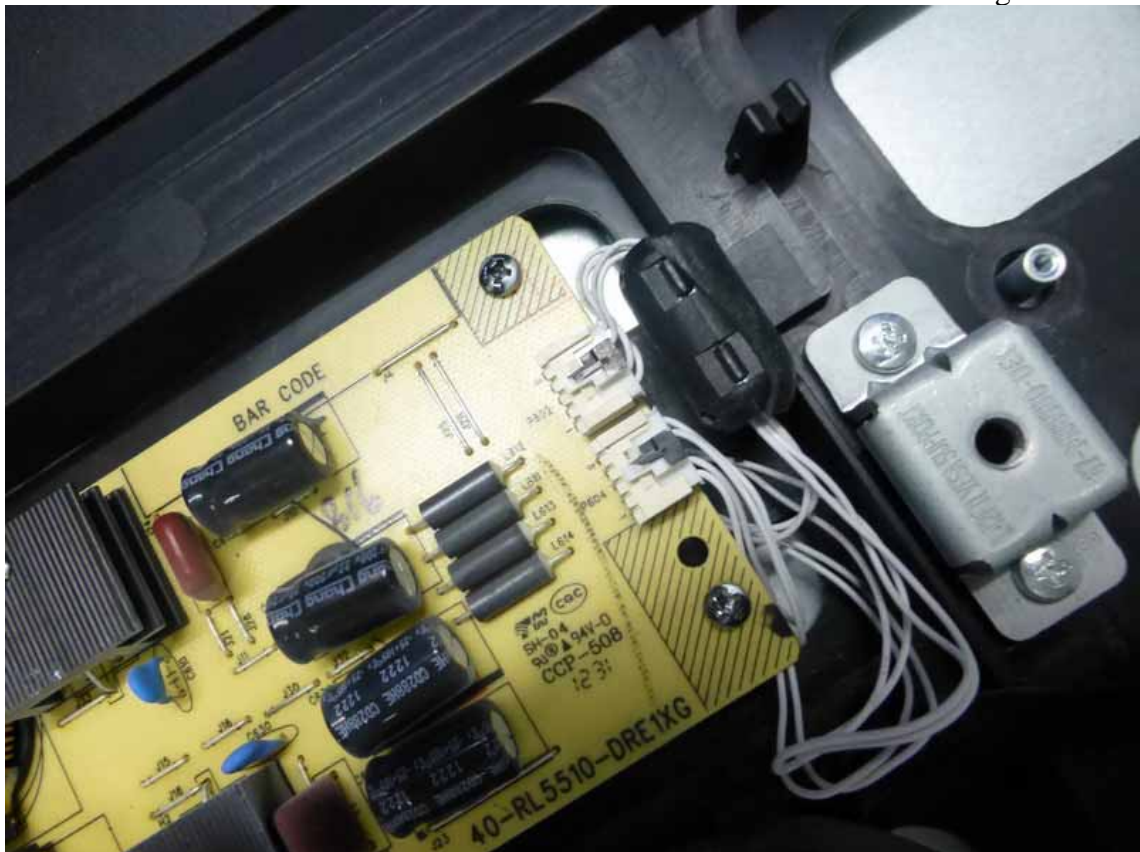




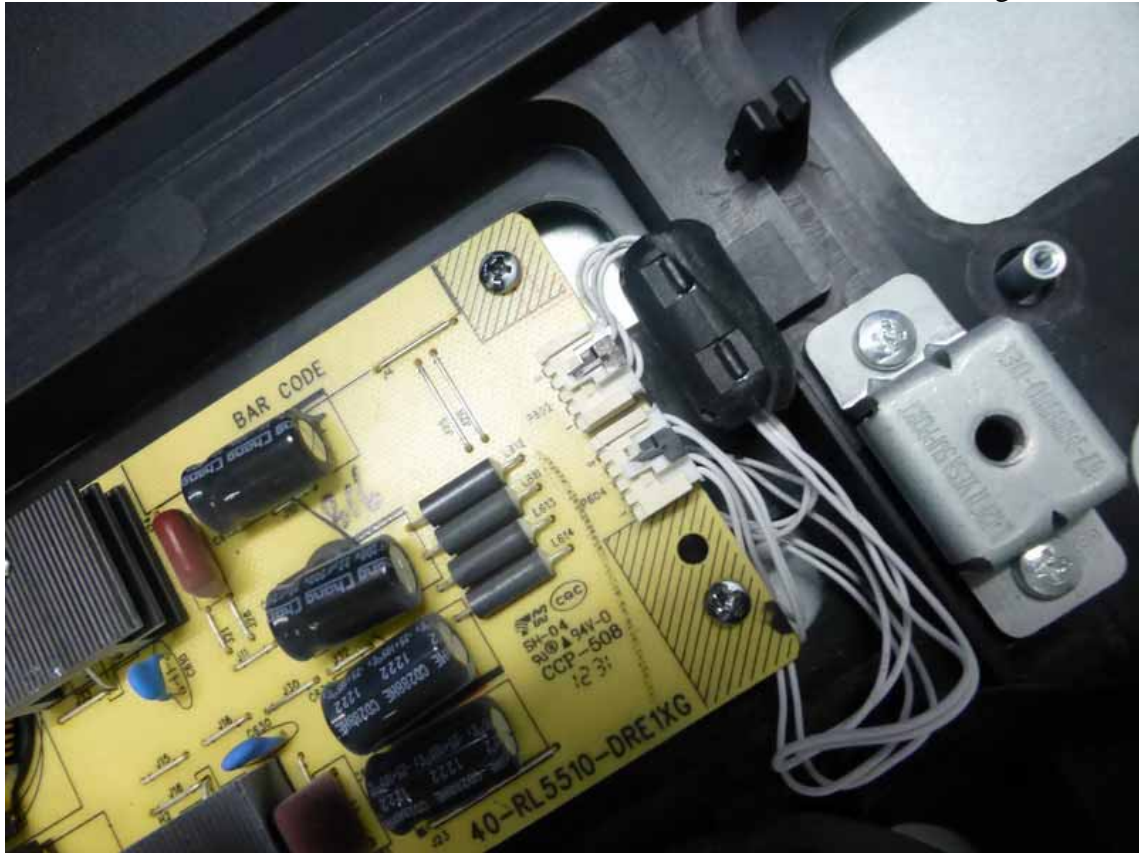
**Figure 11**  
Inside Configuration of the EUT



**Figure 12**  
Inside Configuration of the EUT



**Figure 13**  
Inside Configuration of the EUT



**Figure 14**  
Frontside of the LCD Panel





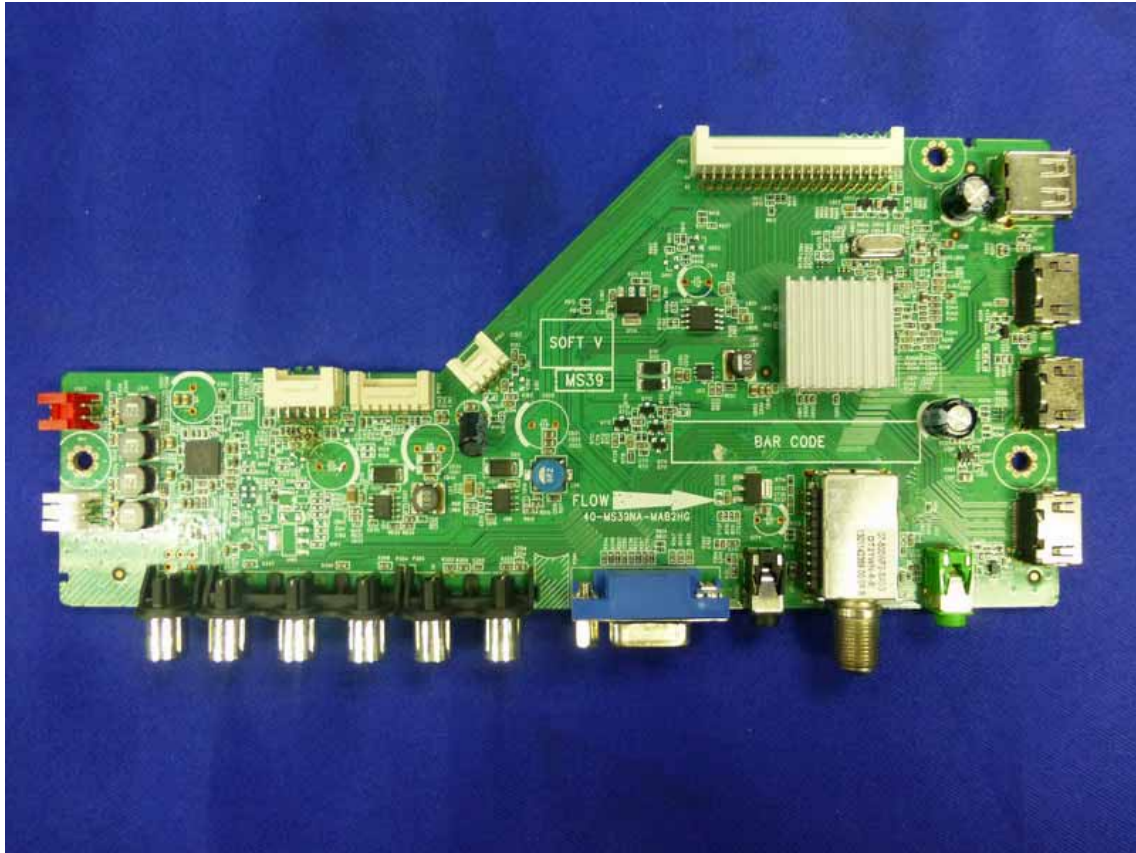
**Figure 15**  
Backside of the LCD Panel



**Figure 16**  
Label of the LCD Panel



**Figure 17**  
Frontside of the Main Board

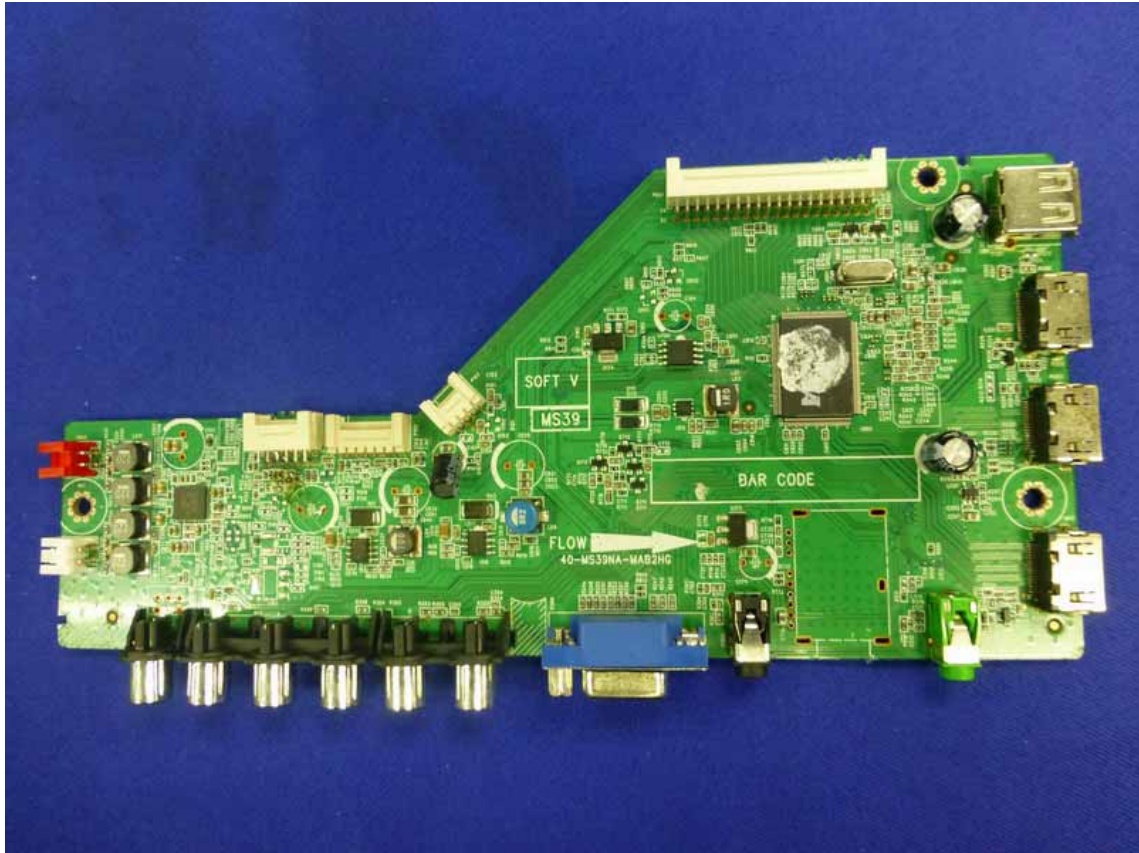


**Figure 18**  
Backside of the Main Board

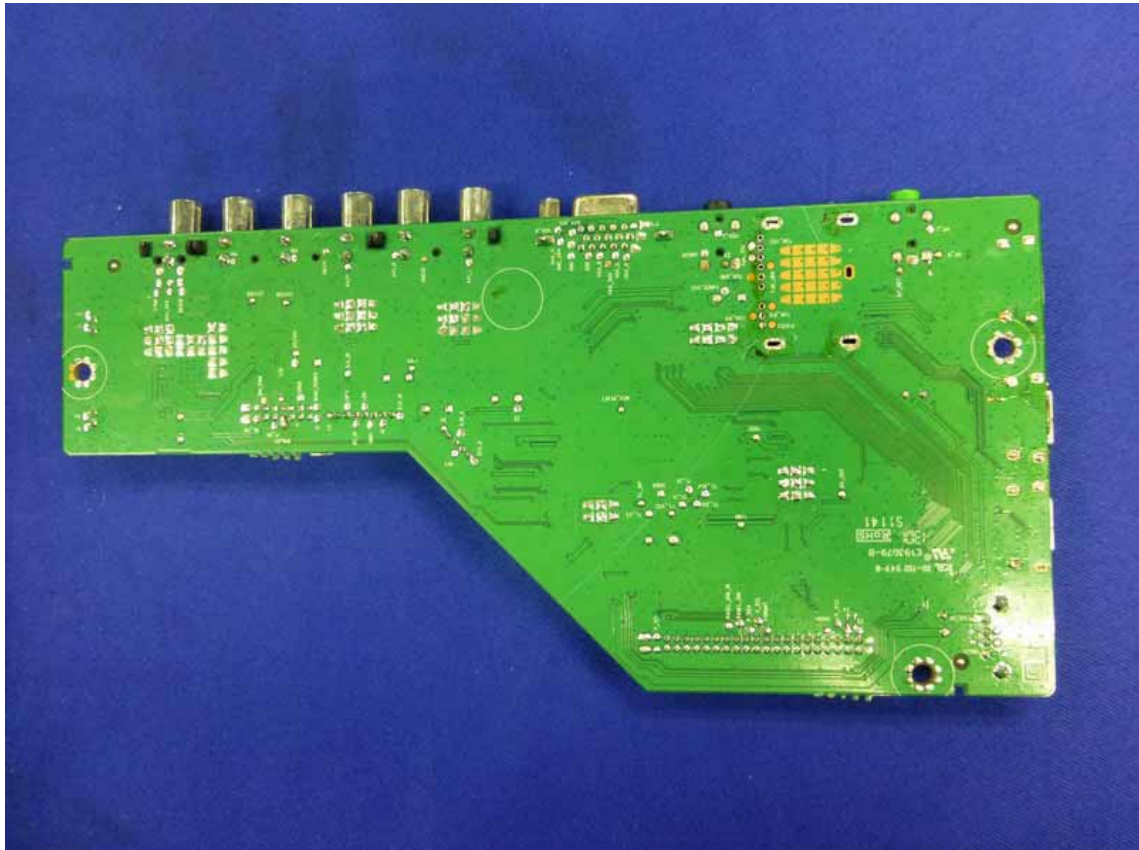




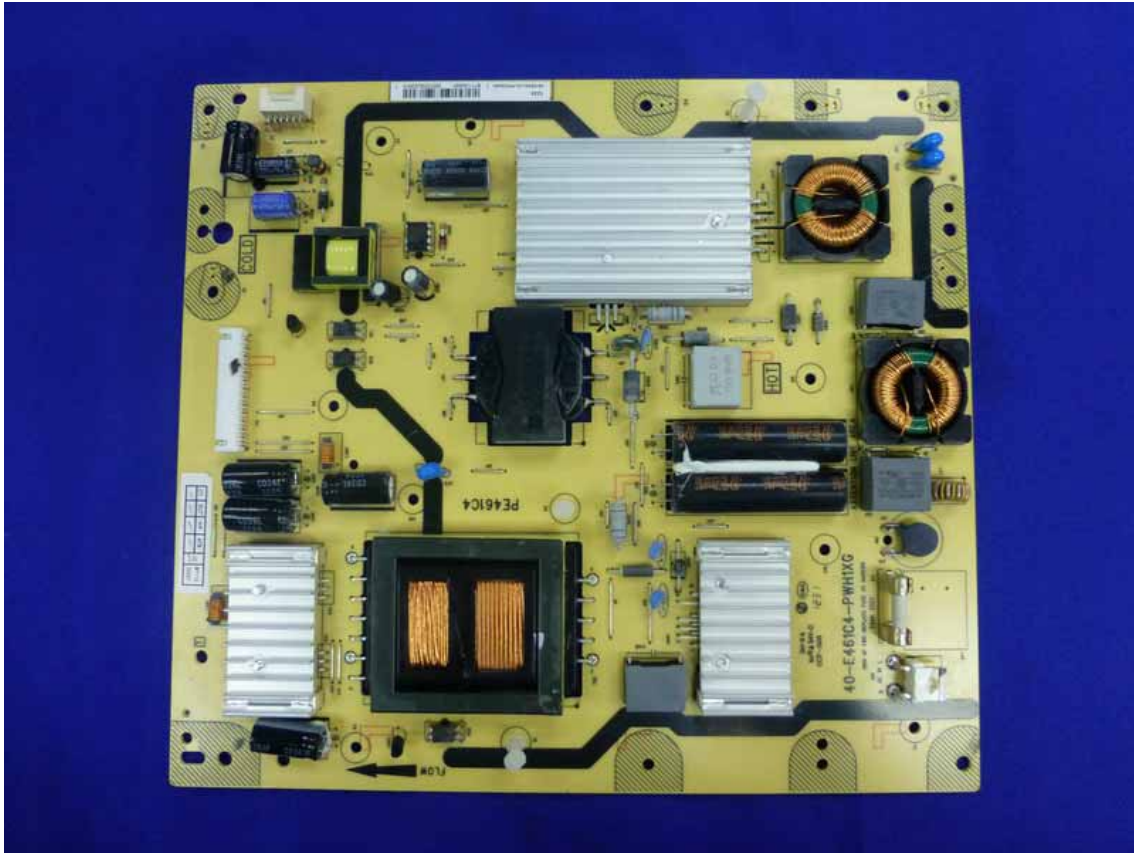
**Figure 19**  
Frontside of the Main Board



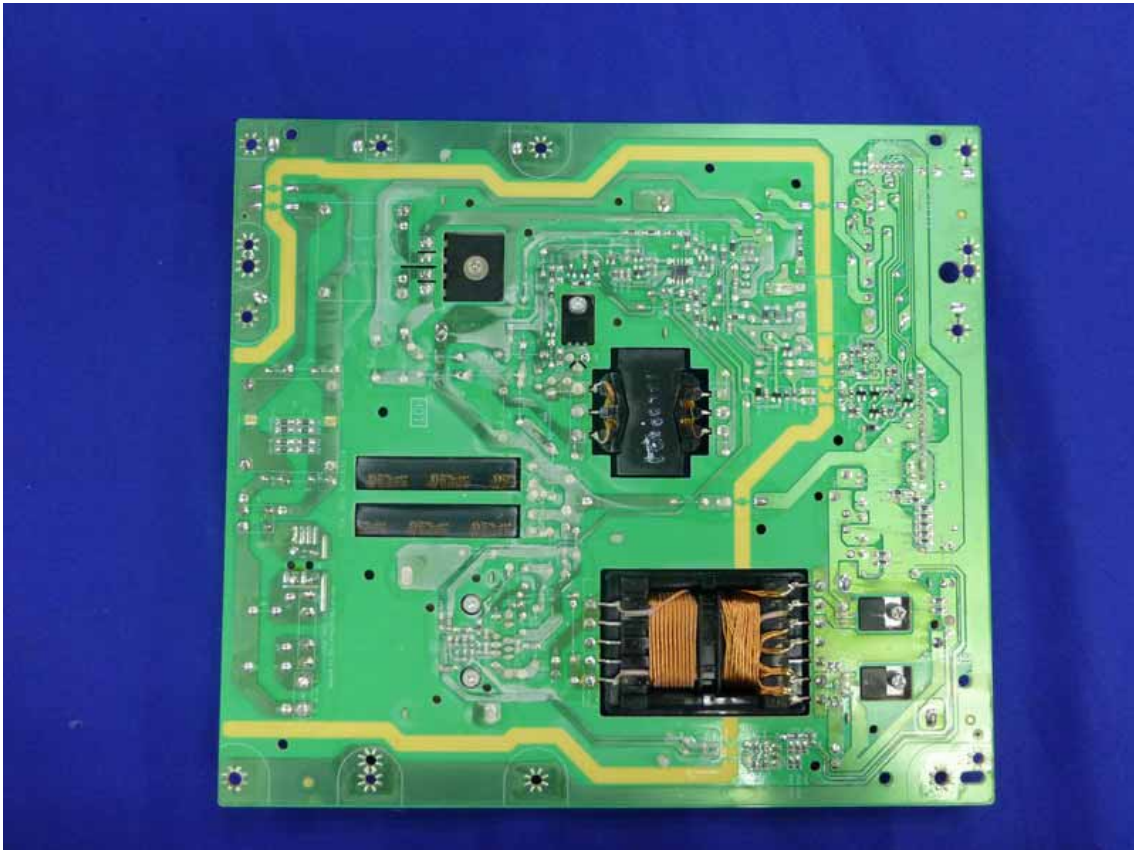
**Figure 20**  
Backside of the Main Board



**Figure 21**  
Frontside of the Power Board

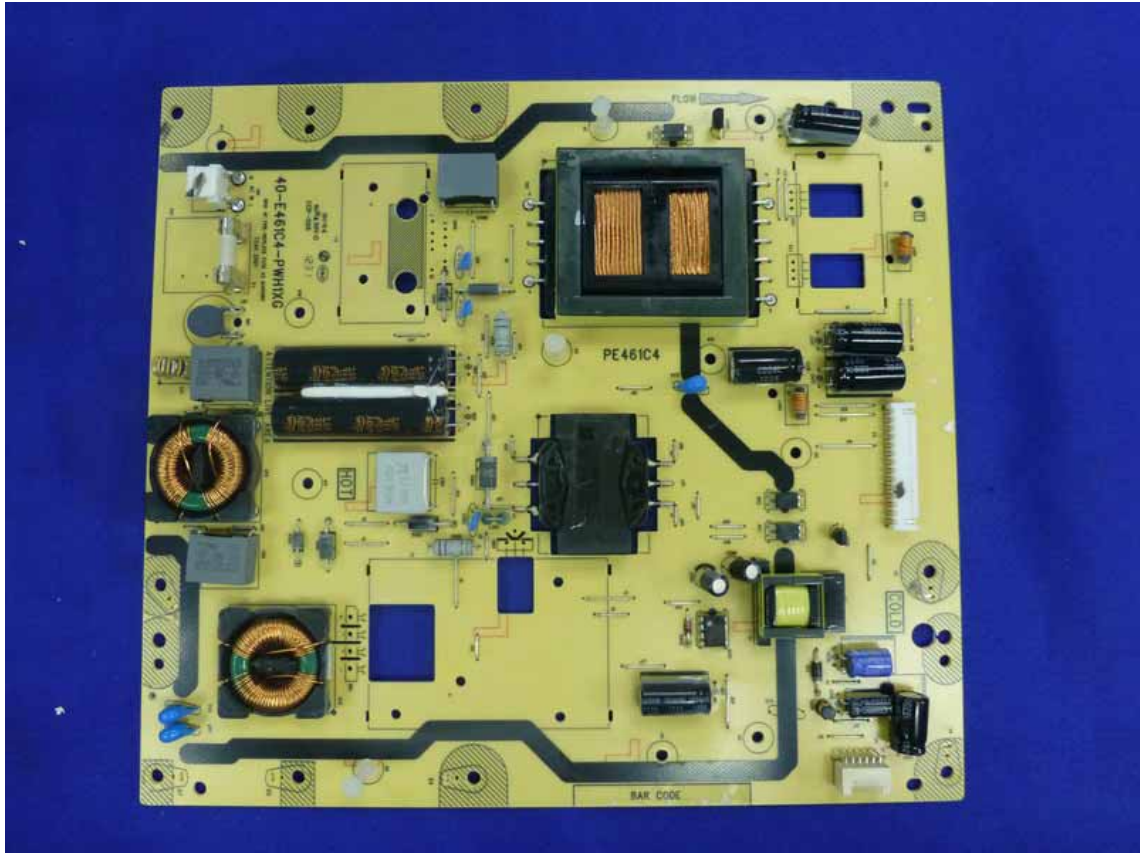


**Figure 22**  
Backside of the Power Board

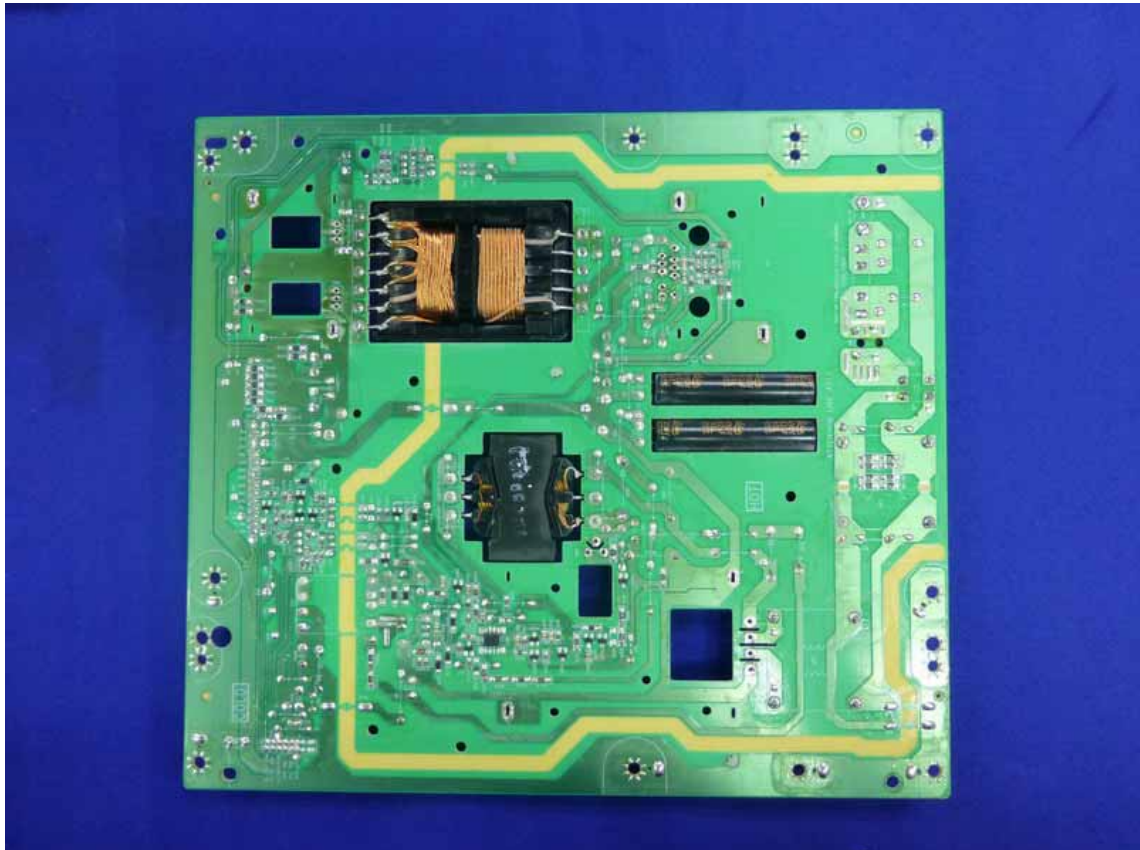




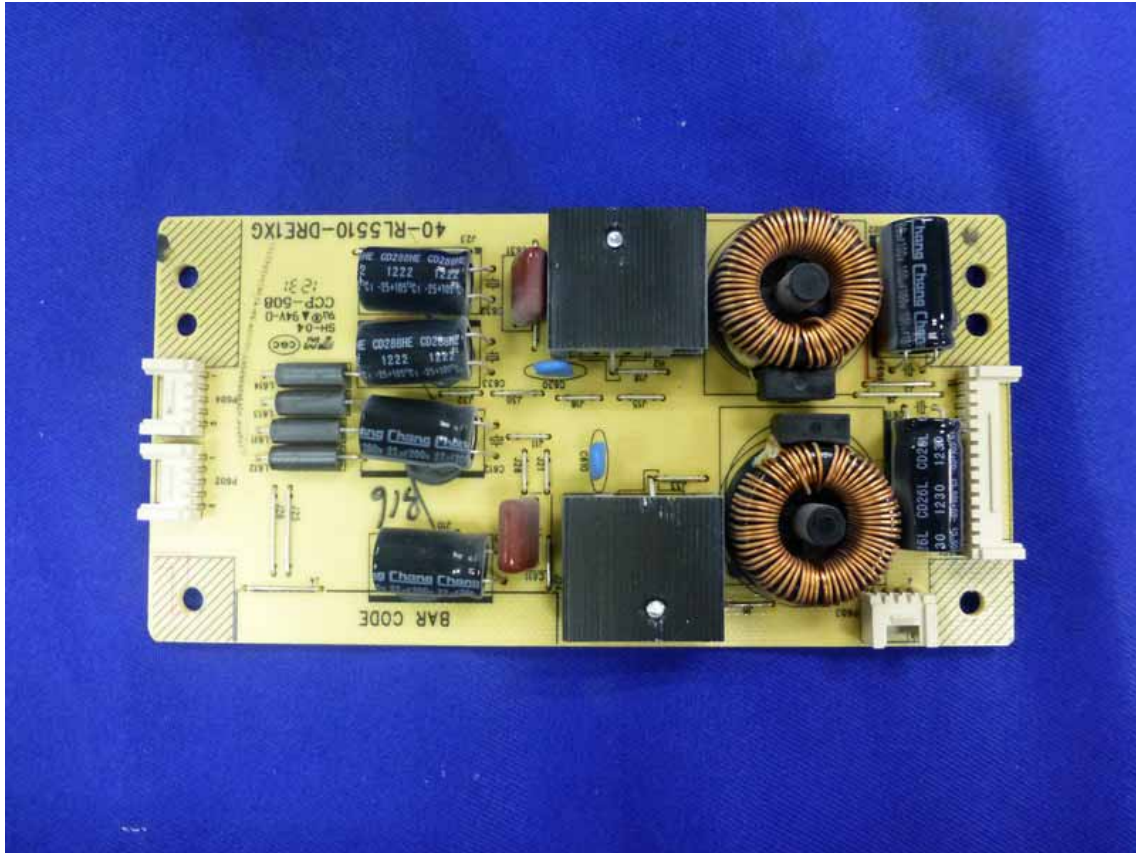
**Figure 23**  
Frontside of the Power Board



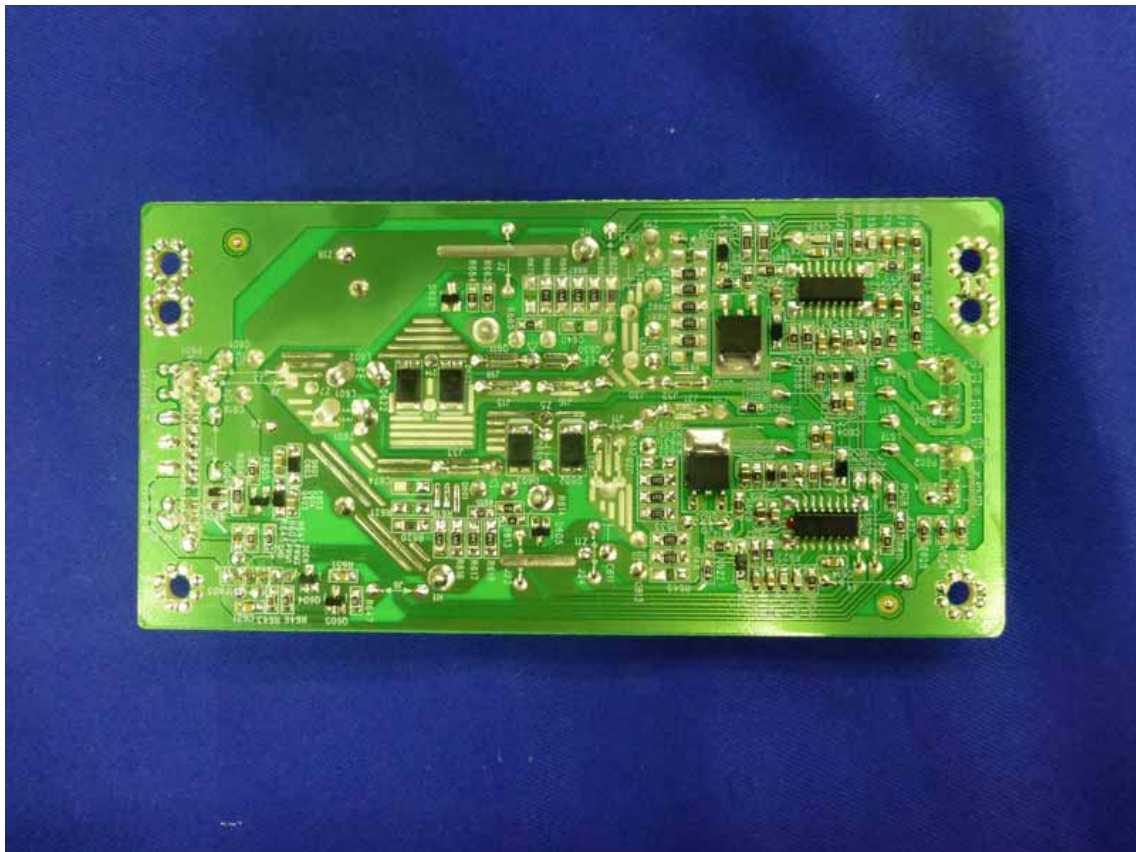
**Figure 24**  
Frontside of the Power Board



**Figure 25**  
Frontside of the Power Board

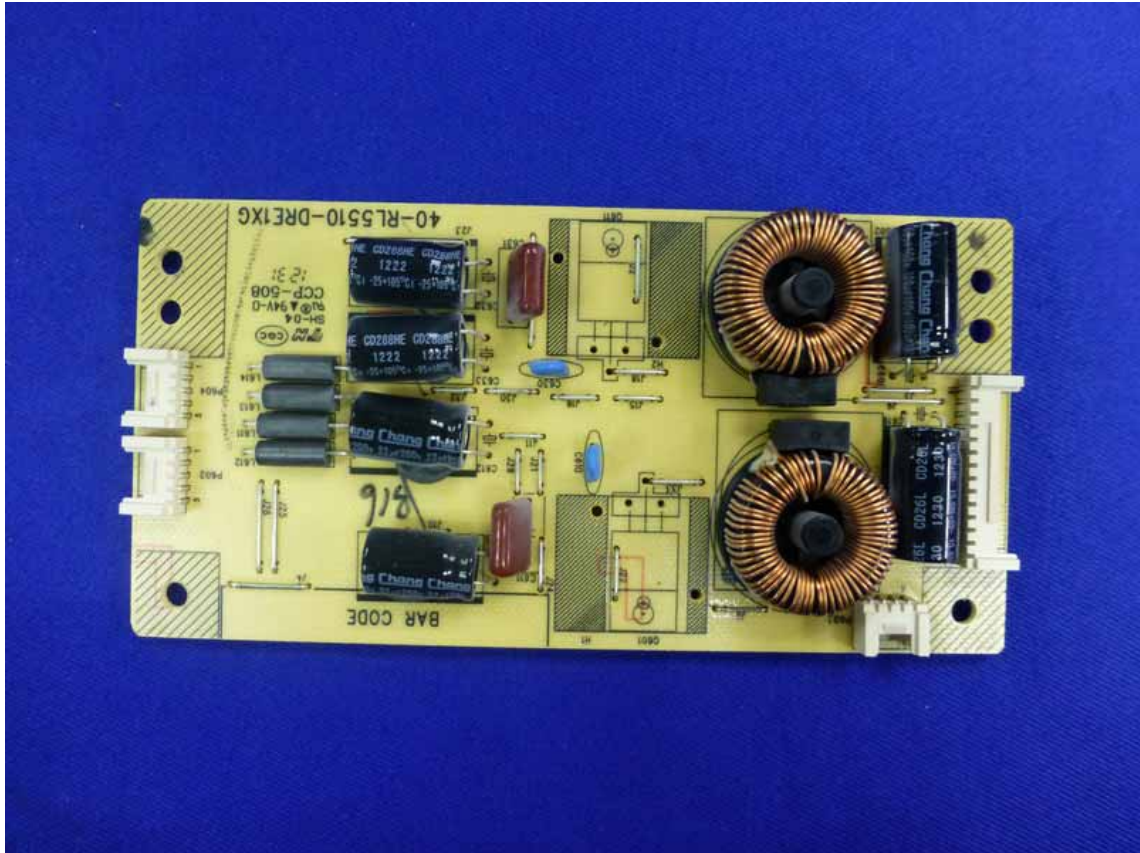


**Figure 26**  
Frontside of the Power Board

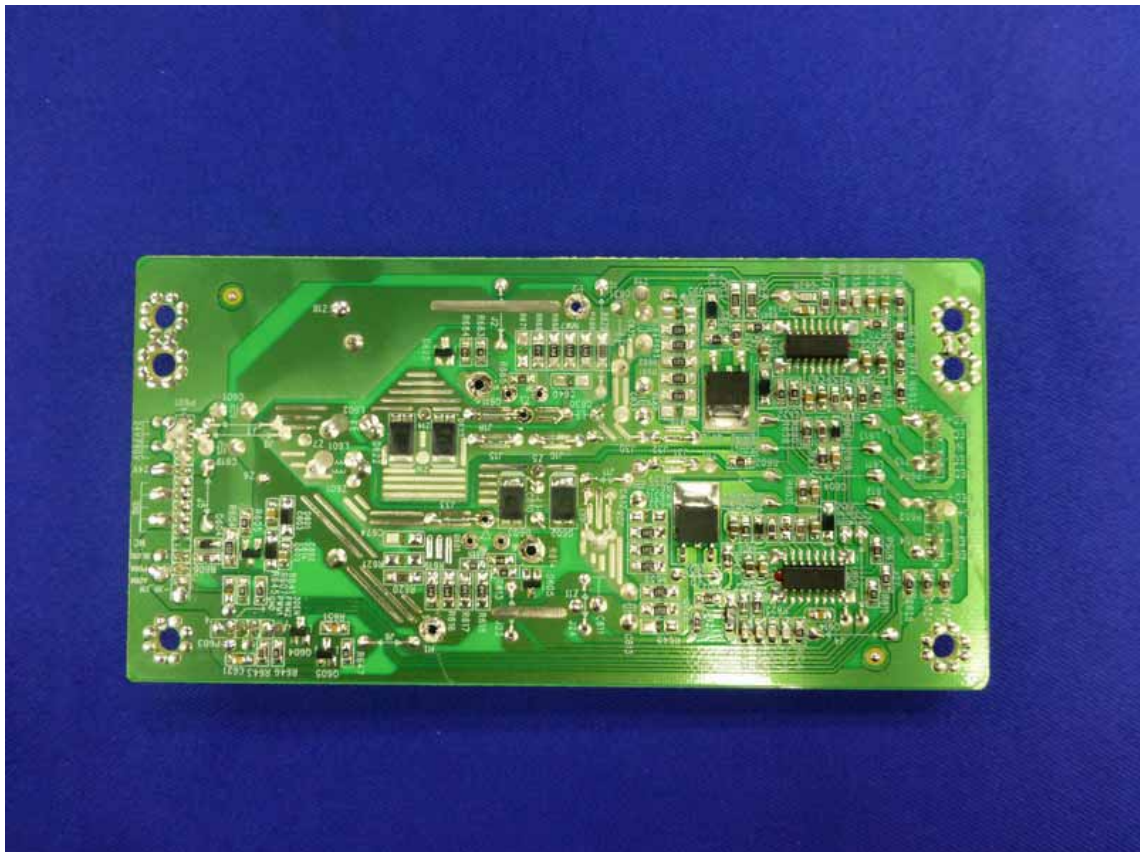




**Figure 27**  
Frontside of the Power Board

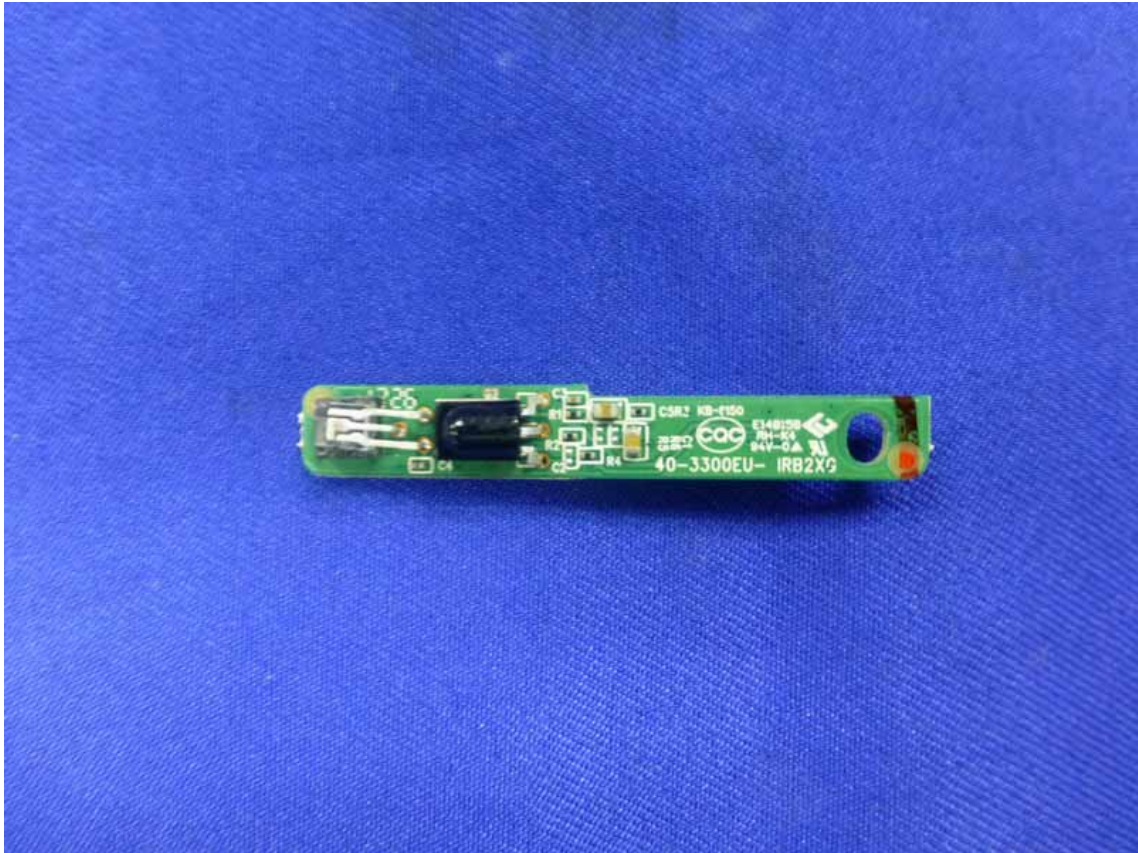


**Figure 28**  
Frontside of the Power Board

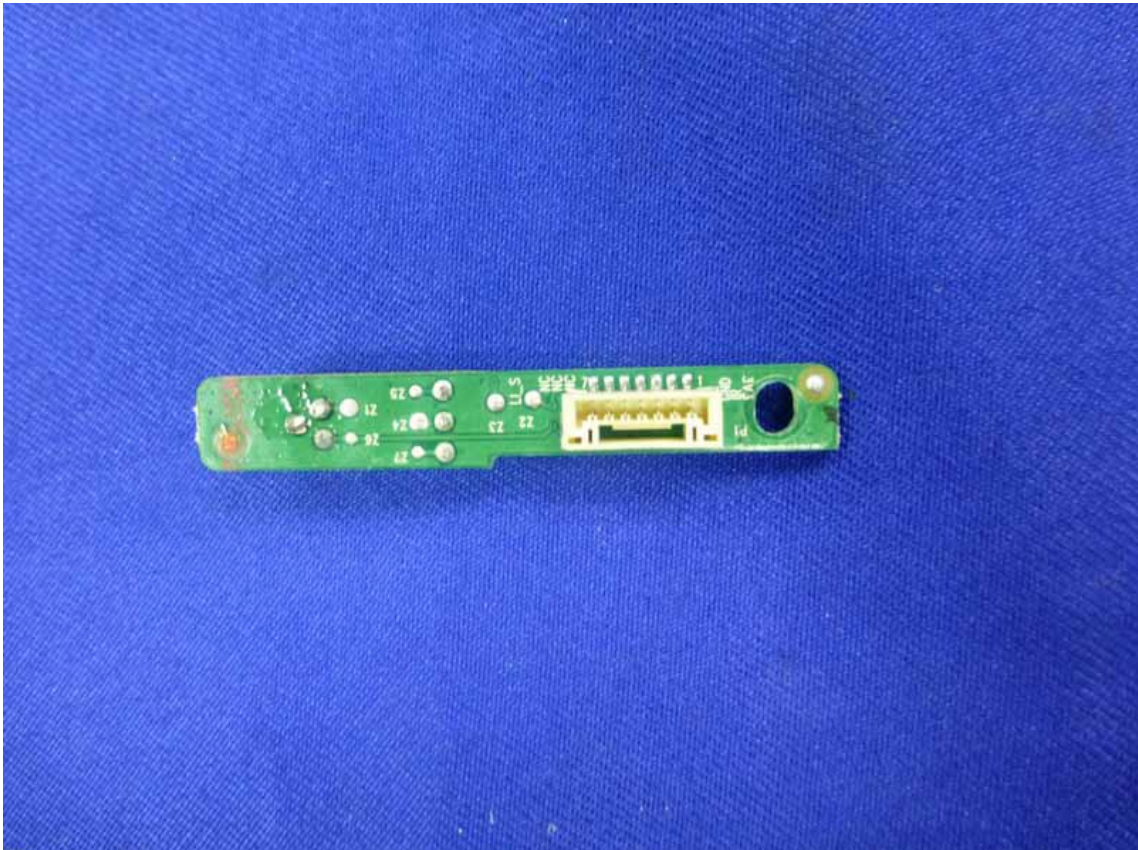




**Figure 29**  
Frontside of the Power Board

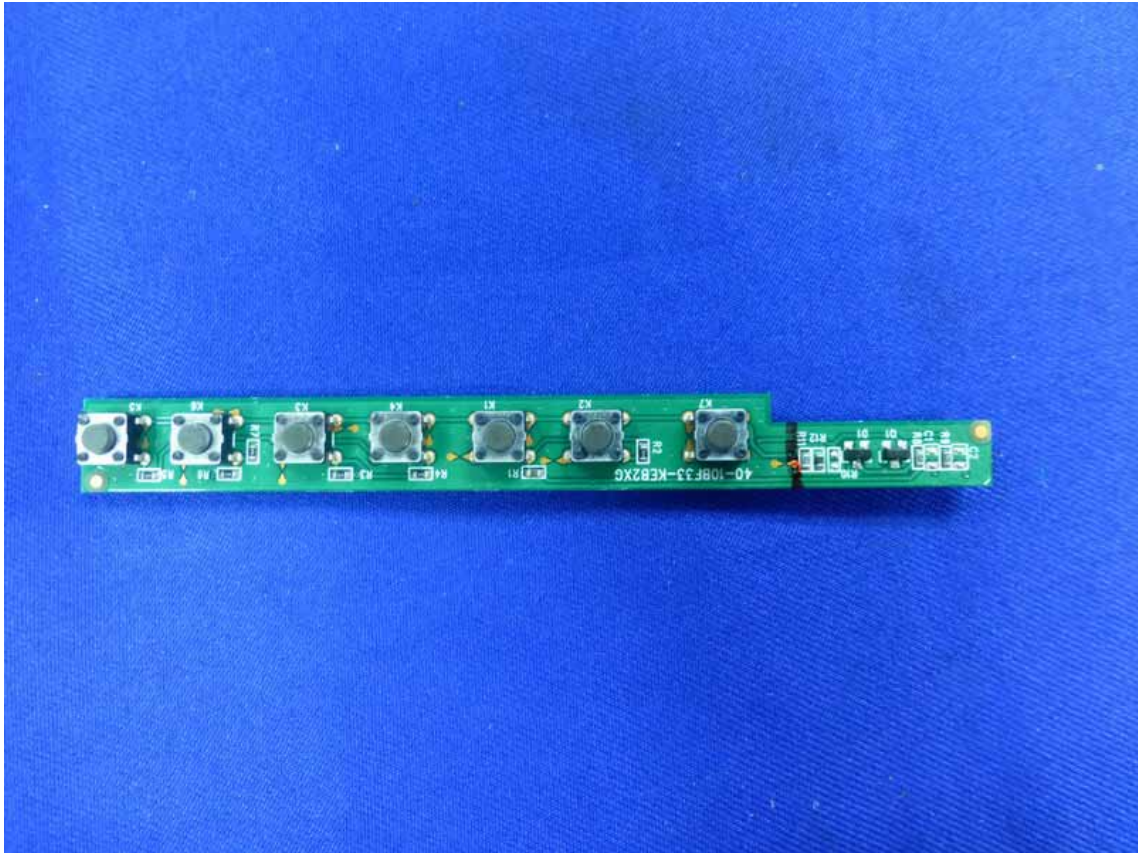


**Figure 30**  
Backside of the Power Board

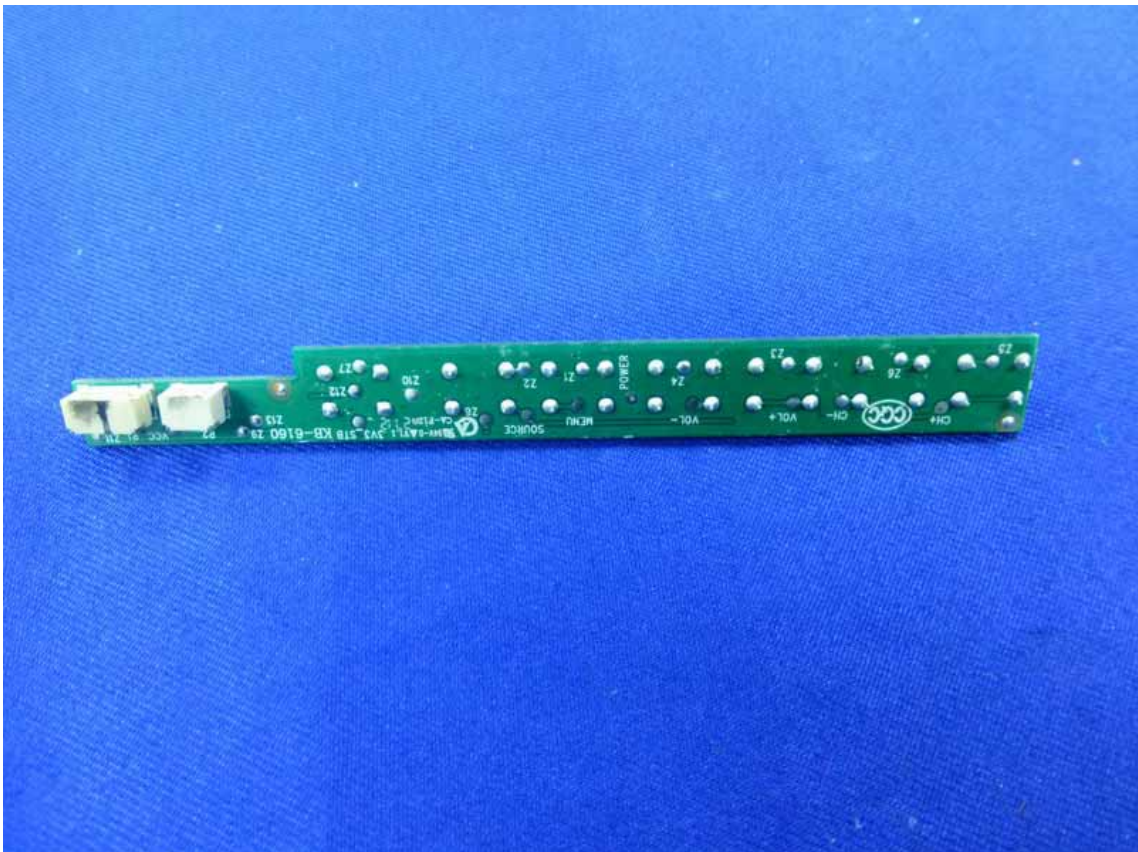




**Figure 31**  
Frontside of the PCB Board

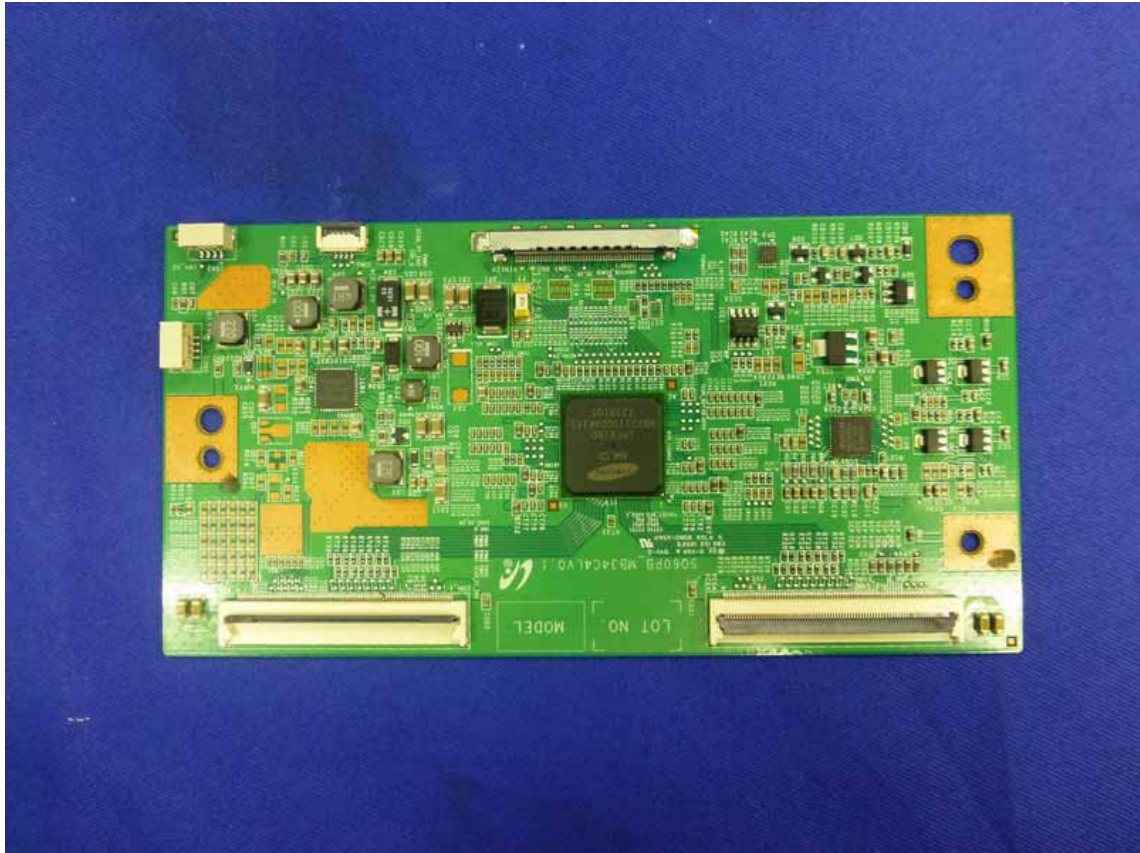


**Figure 32**  
Backside of the PCB Board

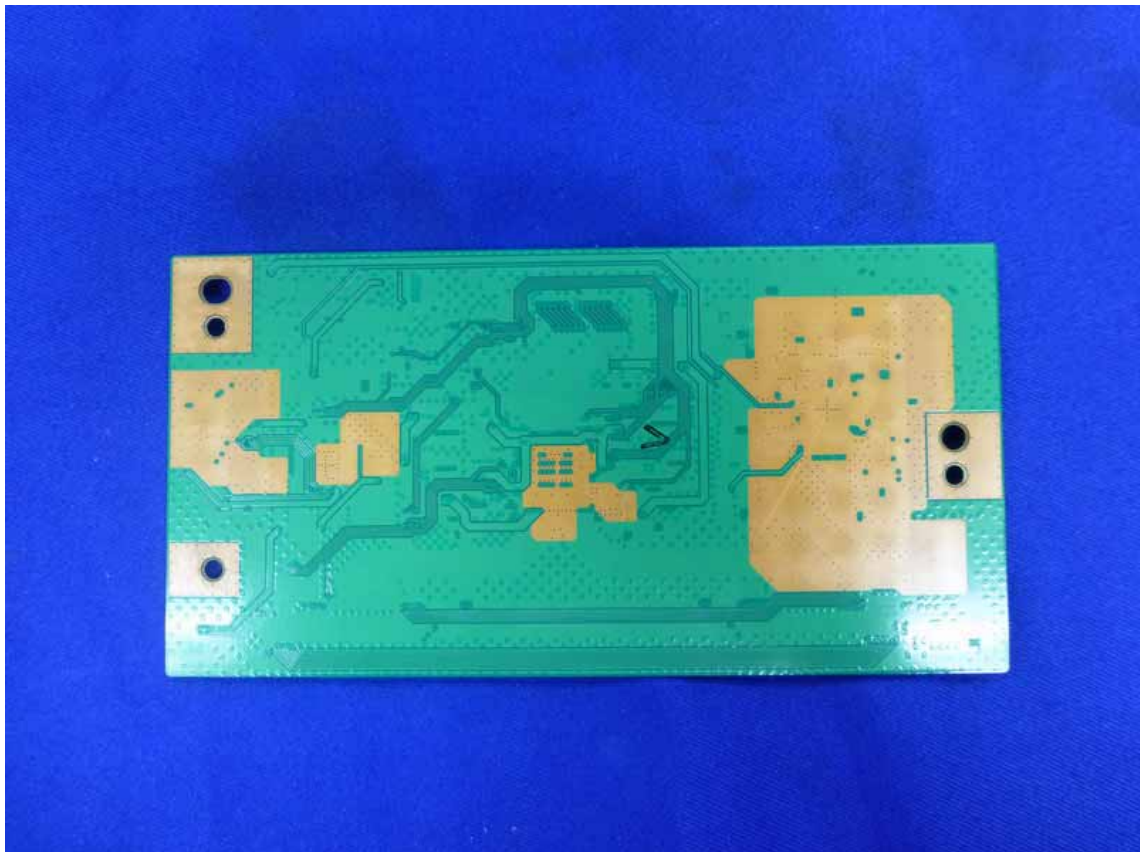




**Figure 33**  
Frontside of the PCB Board

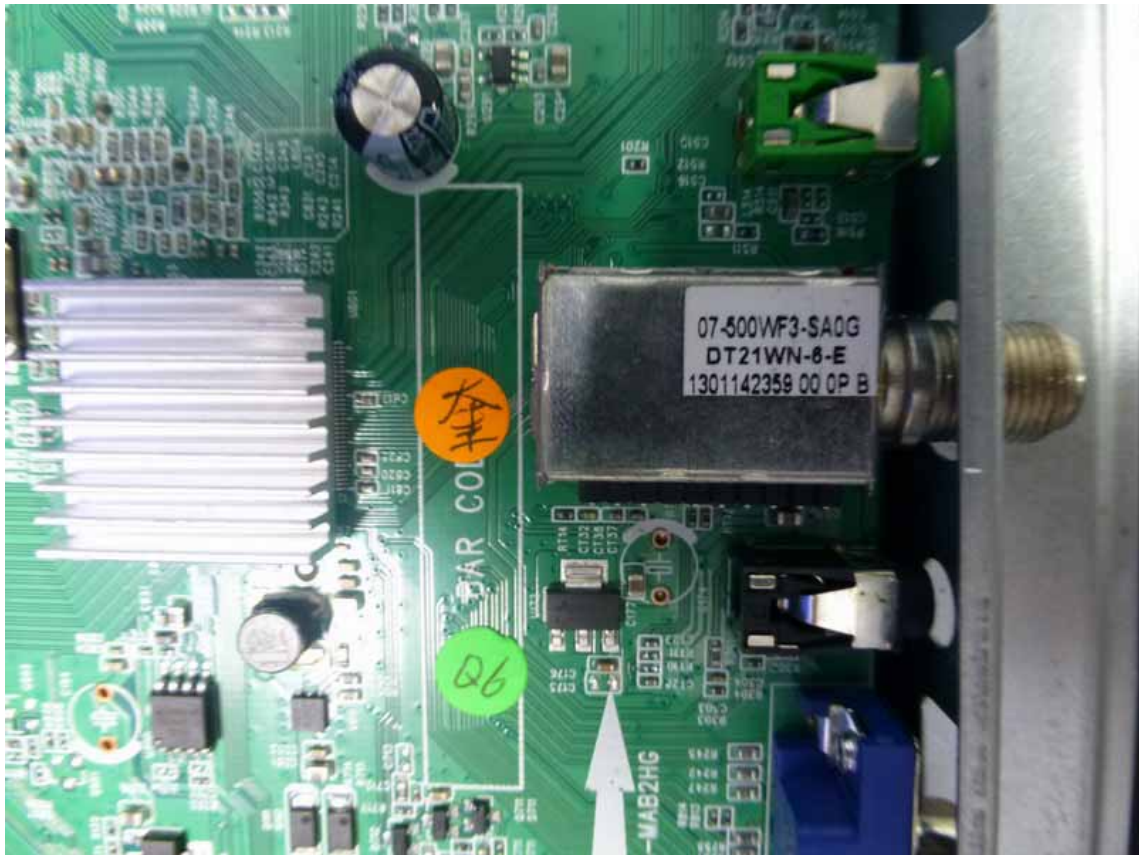


**Figure 34**  
Backside of the PCB Board





**Figure 35**  
TV Tuner



**Figure 36**  
Speaker



**Figure 37**  
Speaker

