

Figure 9
Frontside of the LCD Panel



Figure 10
Backside of the LCD Panel



Figure 11
Label of the LCD Panel



Figure 12
Frontside of the Main Board

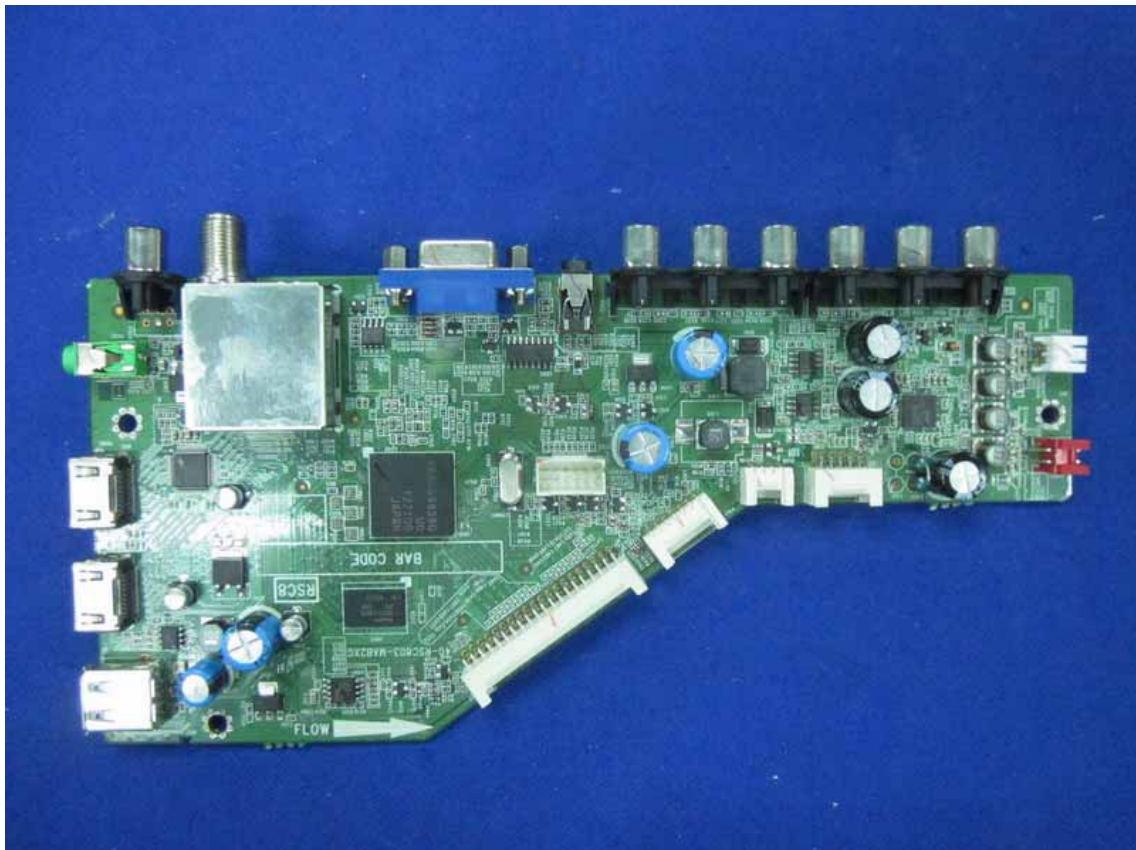


Figure 13
Backside of the Main Board

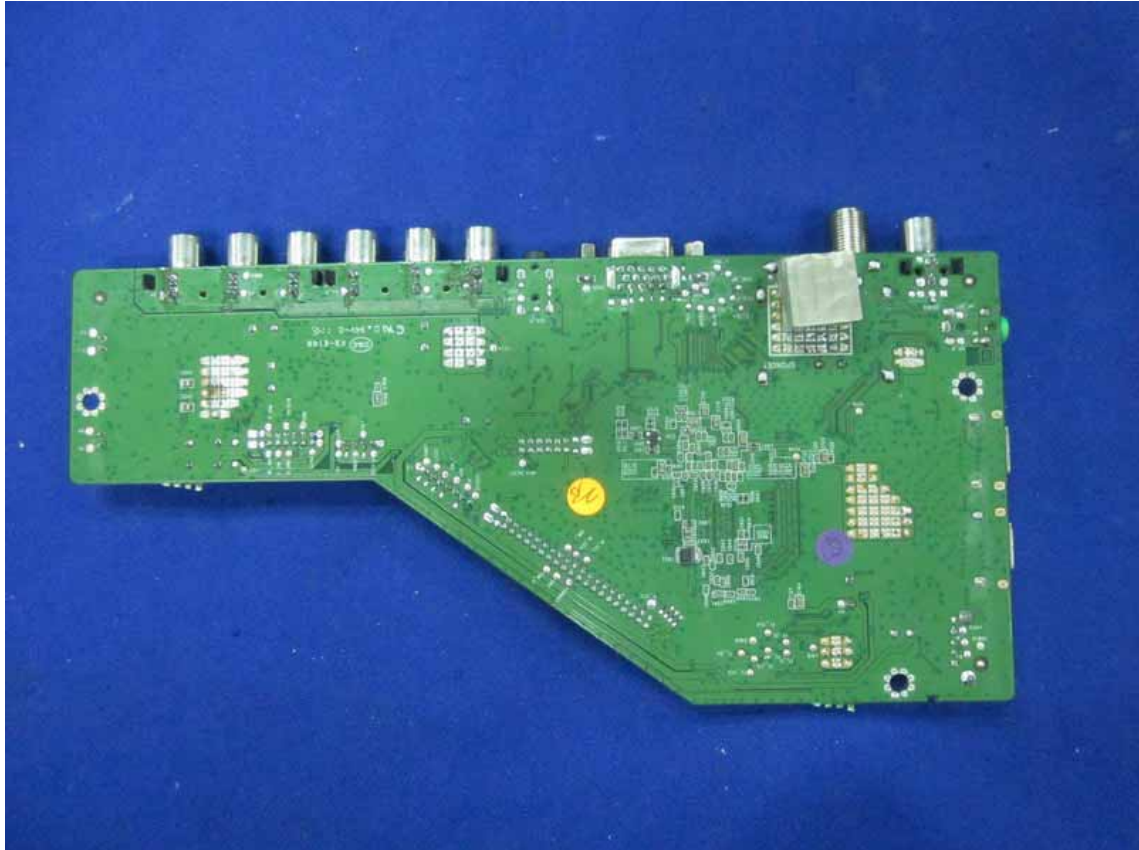


Figure 14
Backside of the Main Board

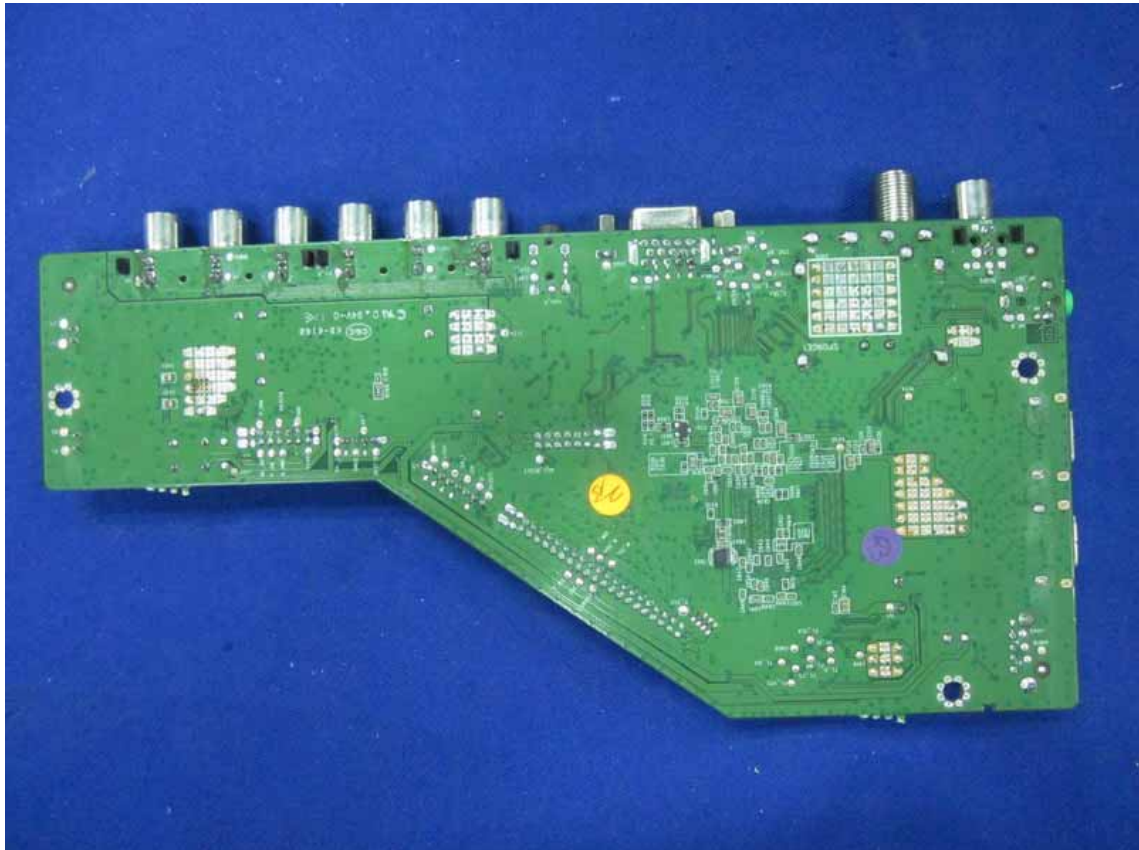


Figure 15
Frontside of the Power Board

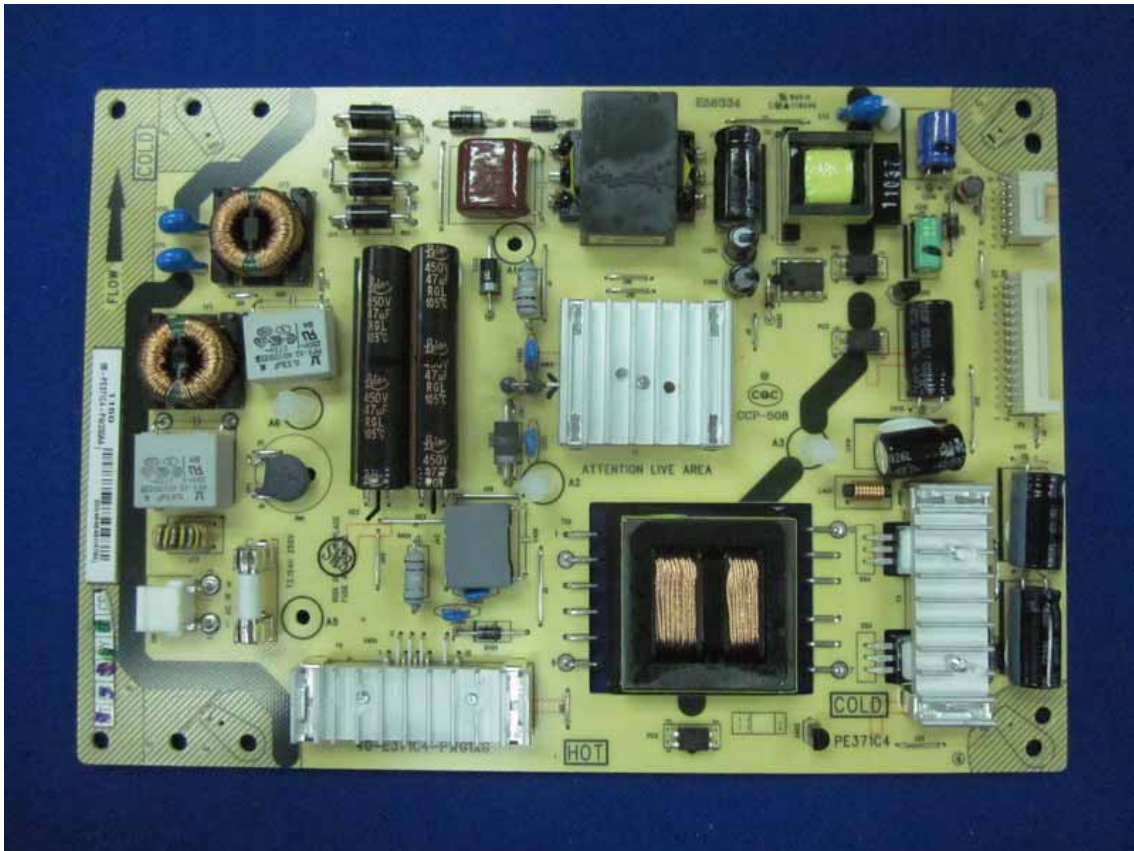


Figure 16
Backside of the Power Board

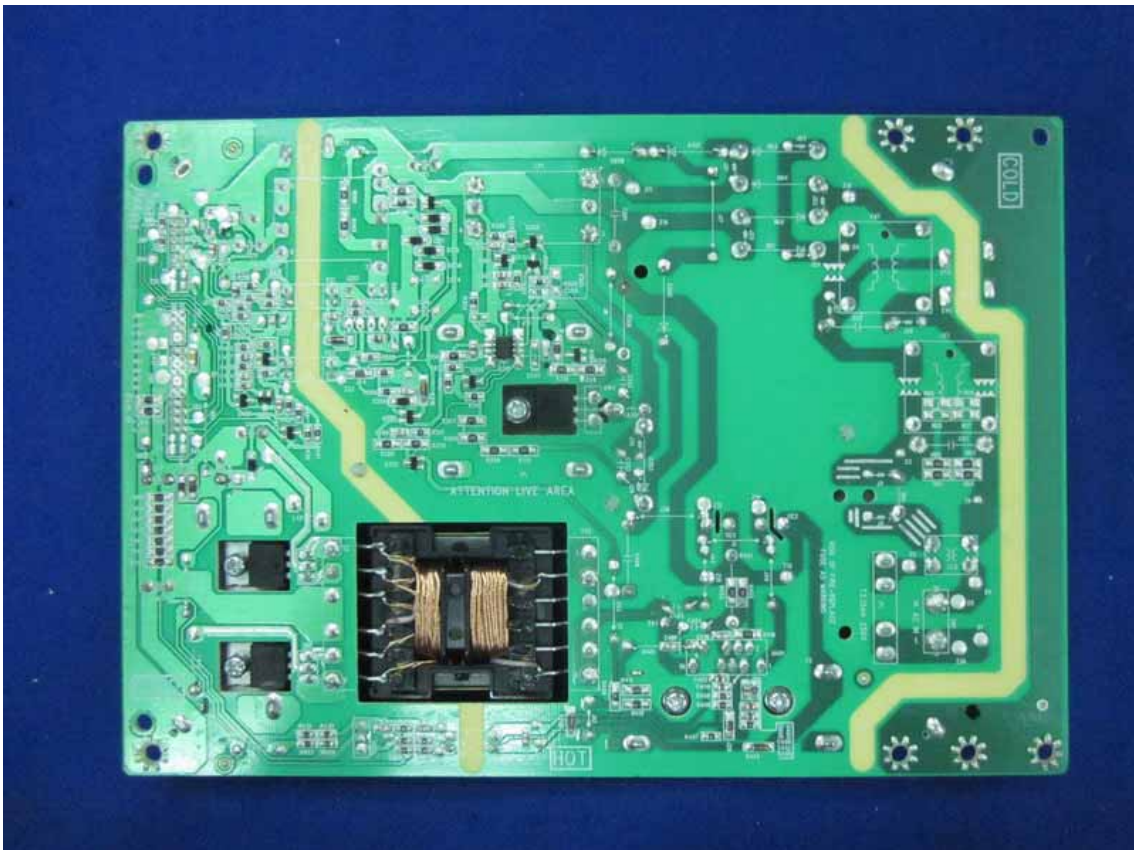


Figure 17
Frontside of the Power Board

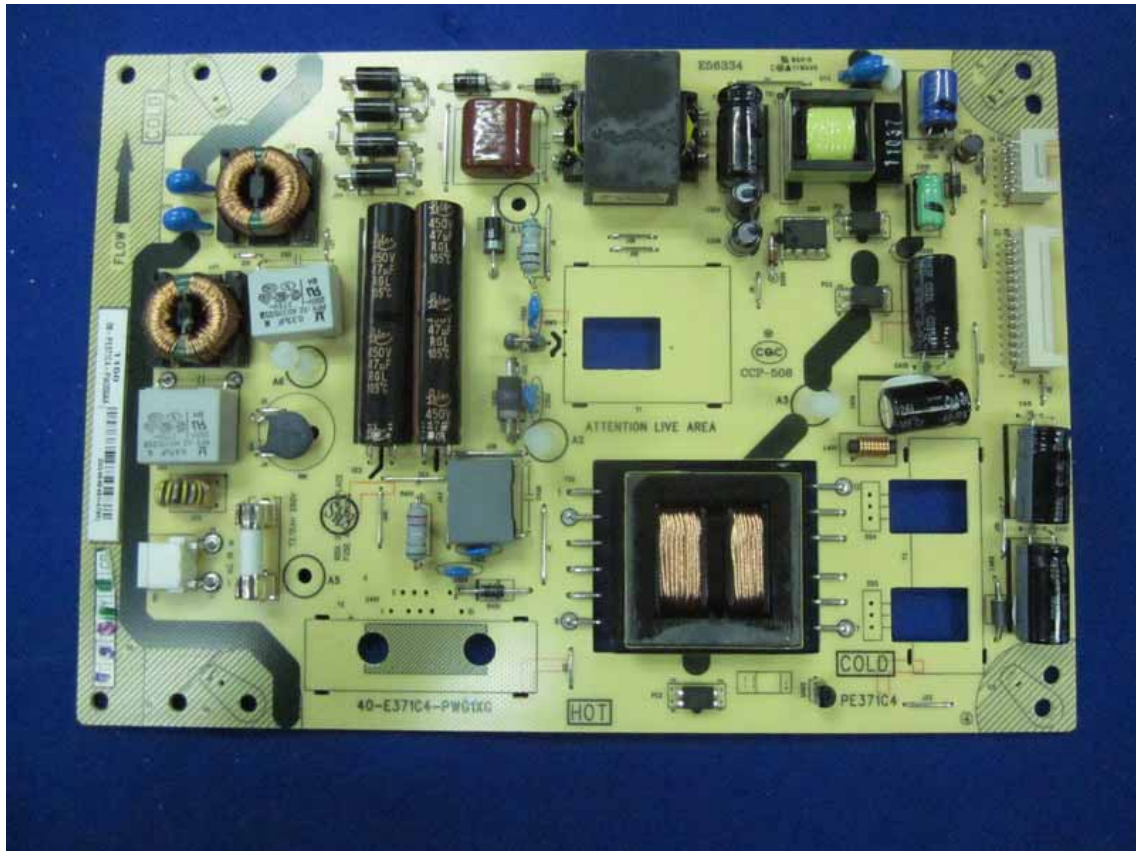


Figure 18
Backside of the Power Board



Figure 19
Frontside of the PCB

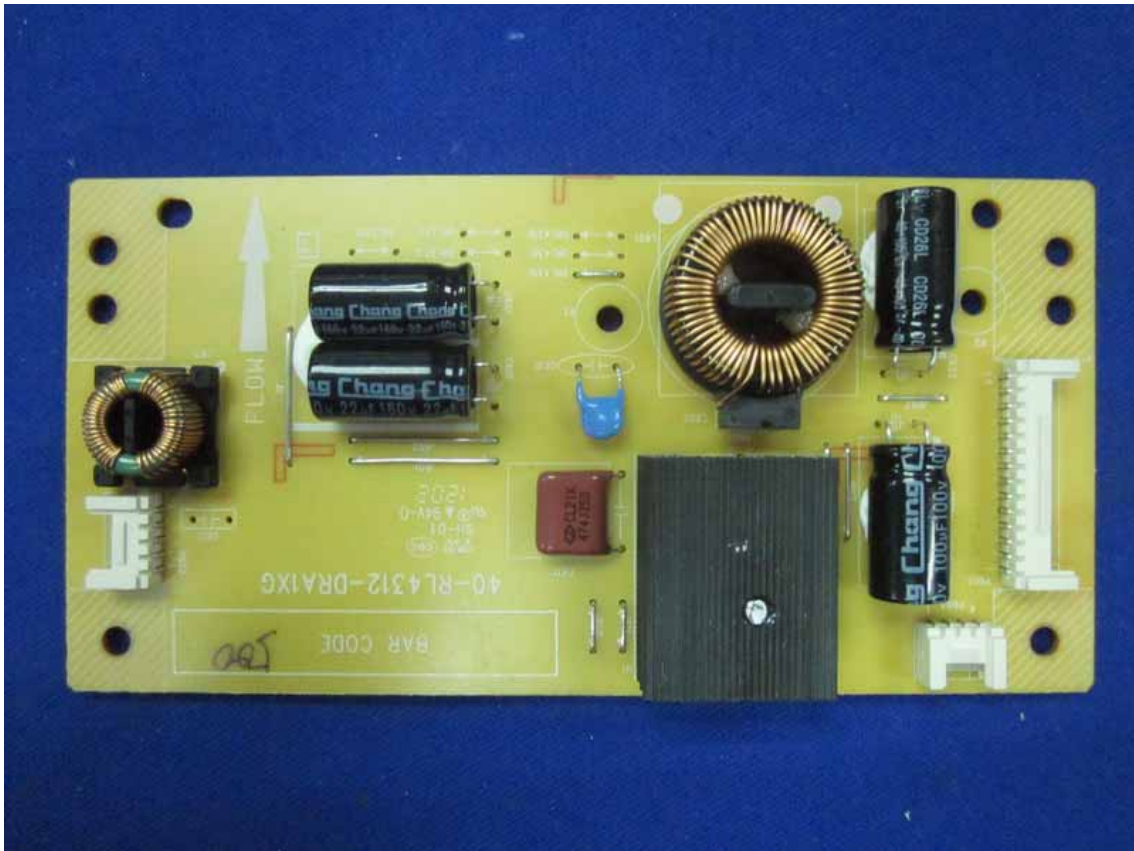


Figure 20
Backside of the PCB

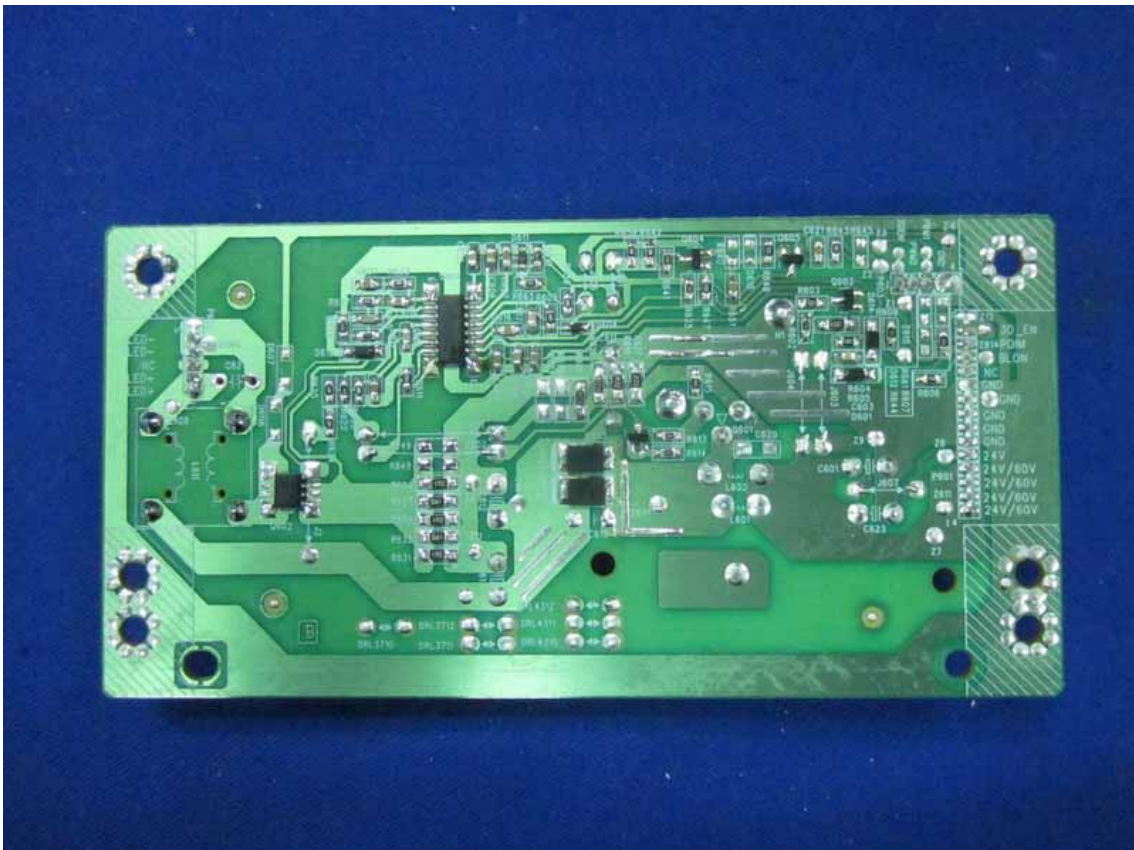


Figure 21
Frontside of the PCB



Figure 22
Backside of the PCB

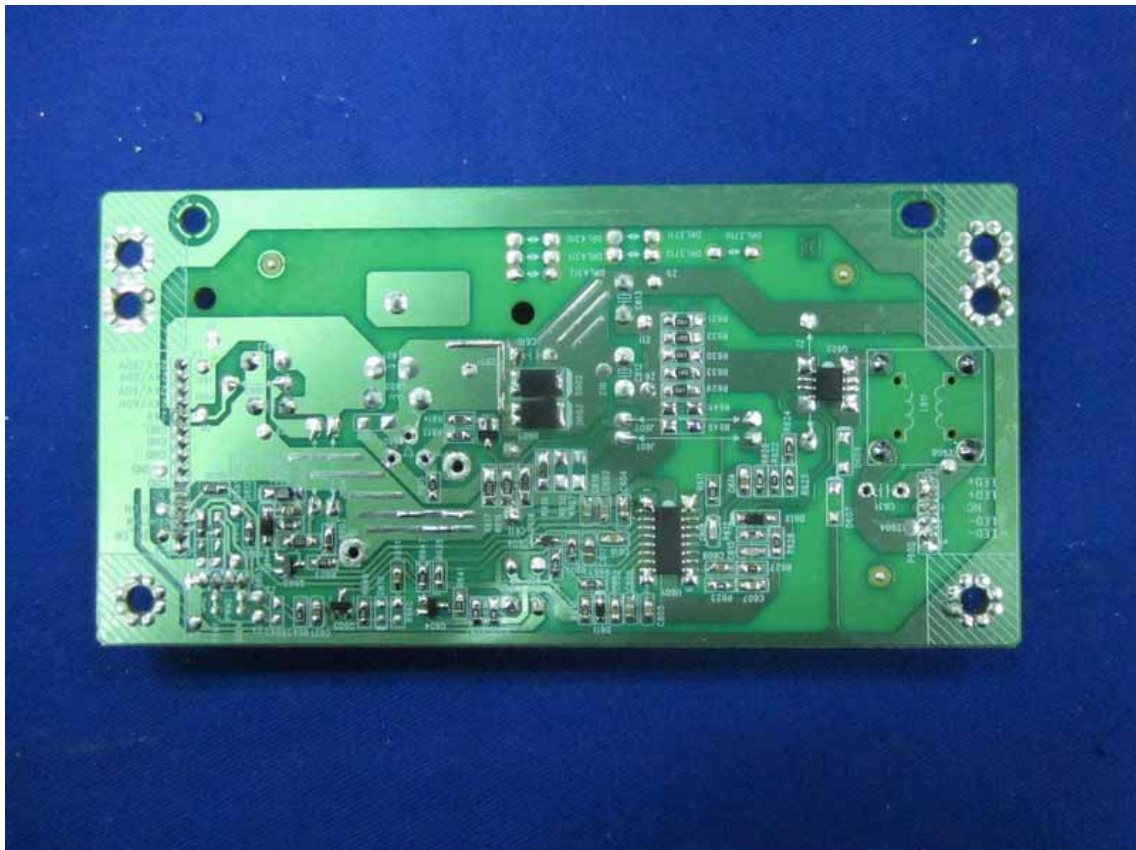


Figure 23
Frontside of the PCB

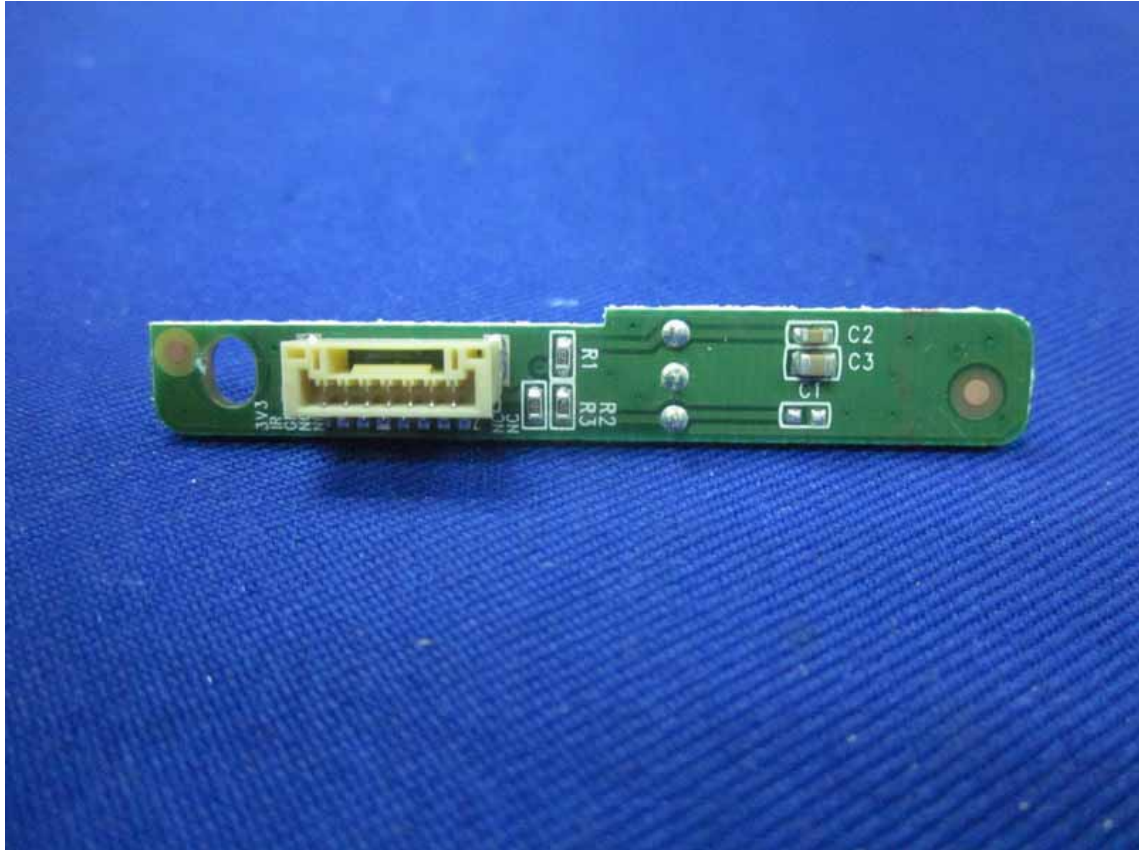


Figure 24
Backside of the PCB

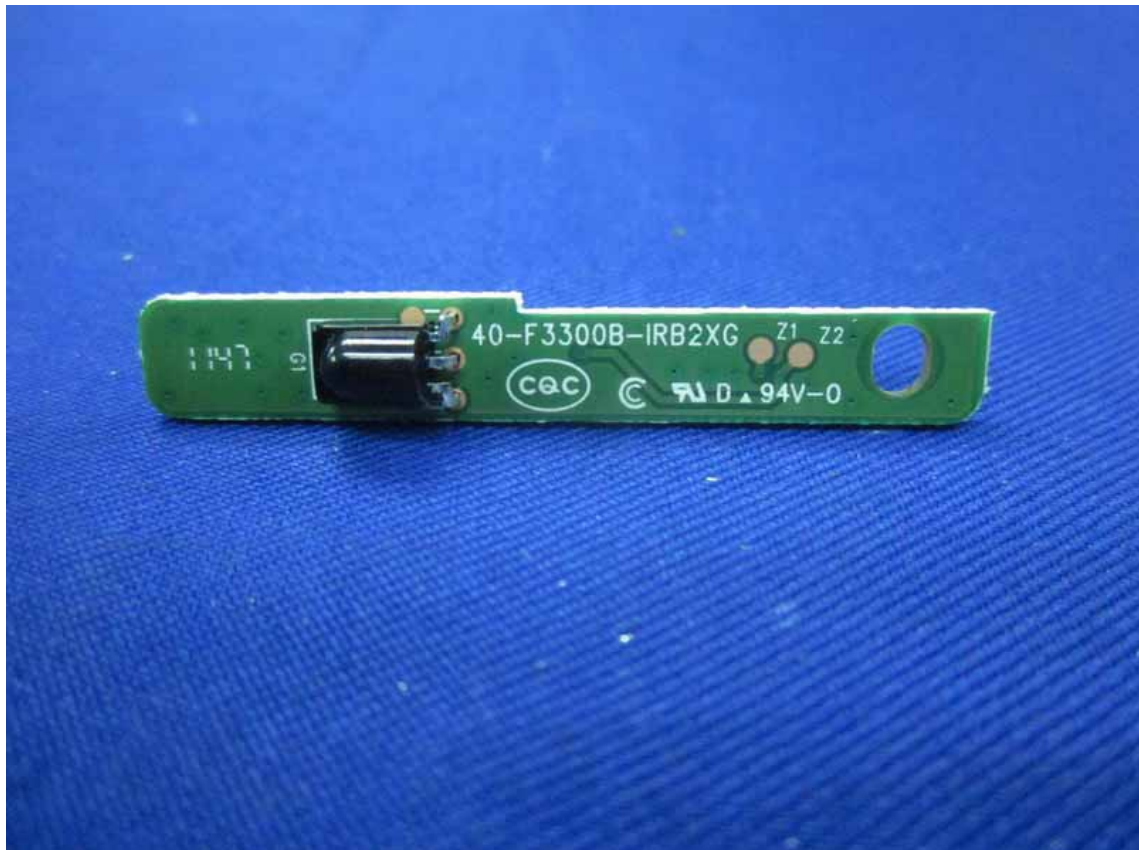


Figure 25
Frontside of the PCB

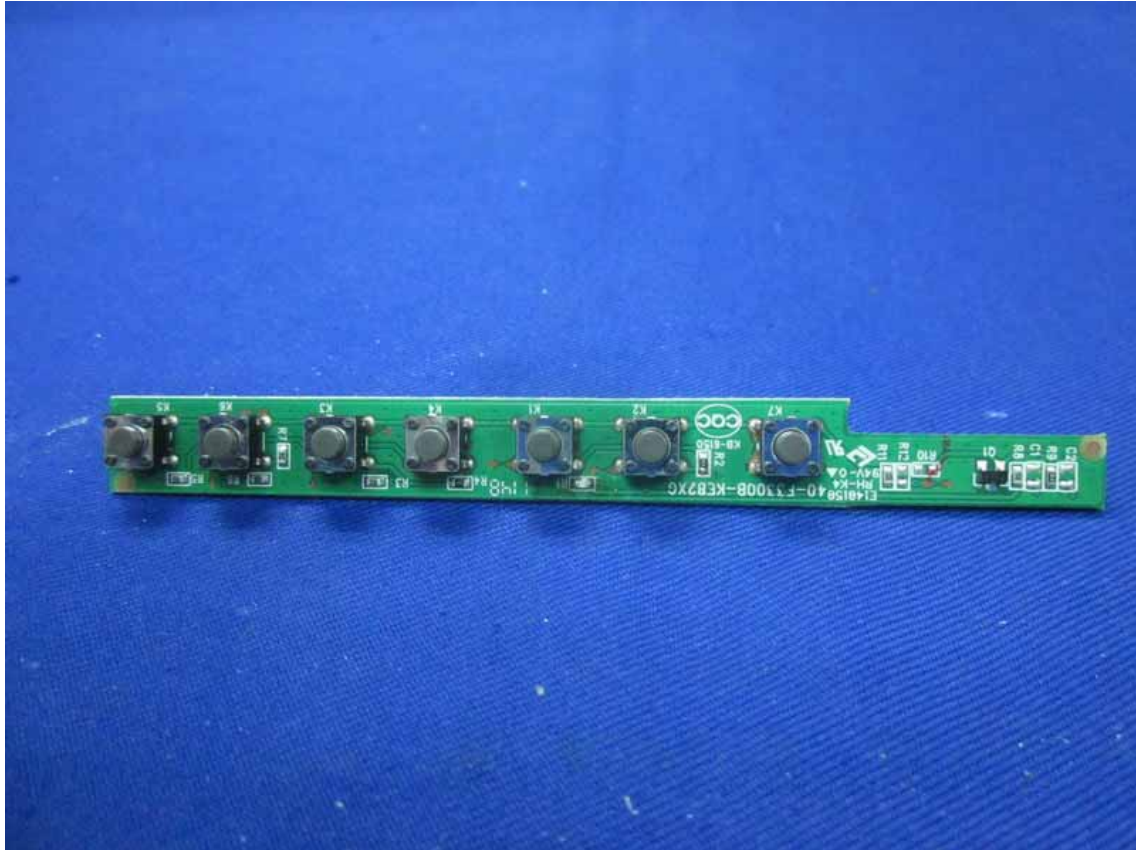


Figure 26
Backside of the PCB



Figure 27
Speaker



Figure 28
Speaker

